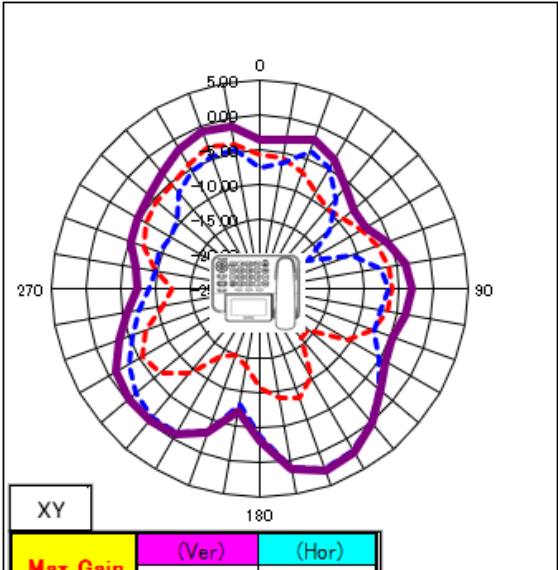
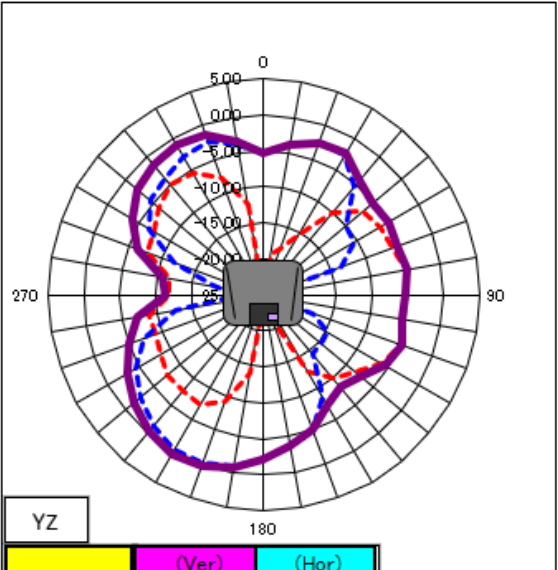


# Antenna Radiation Pattern (Base Unit)

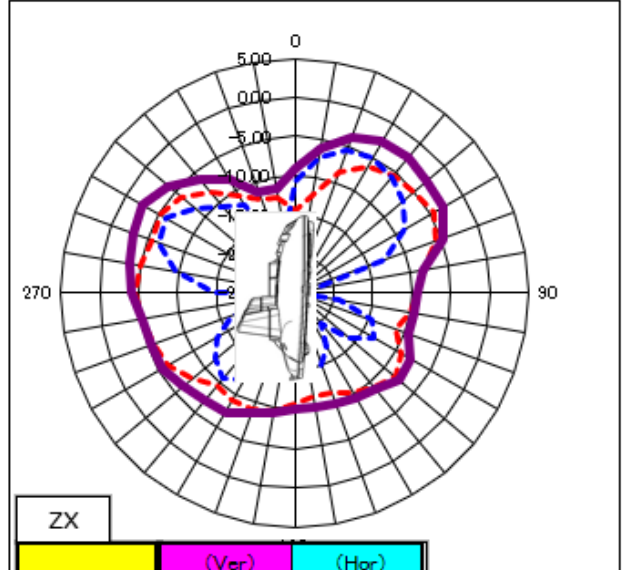
KX-TGF850 Antenna 1 (Pattern)



XY			
	(Ver)	(Hor)	
<b>Max Gain</b>	-3.1 dBi	2.5 dBi	
<b>Ave Gain</b>	-7.5 dBi	-3.9 dBi	-2.3 dBi



YZ			
	(Ver)	(Hor)	
<b>Max Gain</b>	-4.7 dBi	-0.2 dBi	
<b>Ave Gain</b>	-8.3 dBi	-5.1 dBi	-3.4 dBi



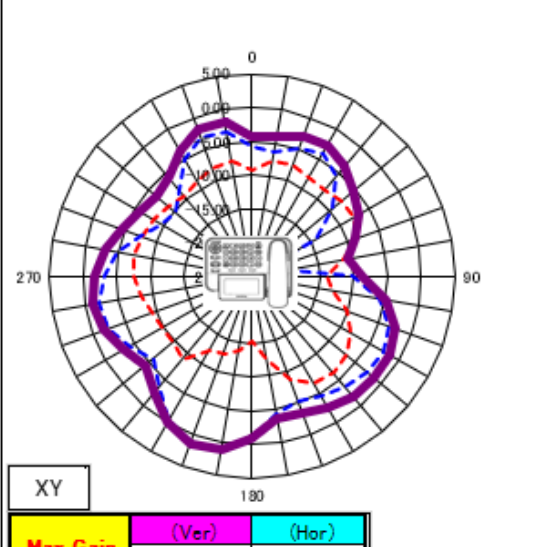
ZX			
	(Ver)	(Hor)	
<b>Max Gain</b>	-4.5 dBi	-5.1 dBi	
<b>Ave Gain</b>	-7.7 dBi	-10.8 dBi	-5.9 dBi



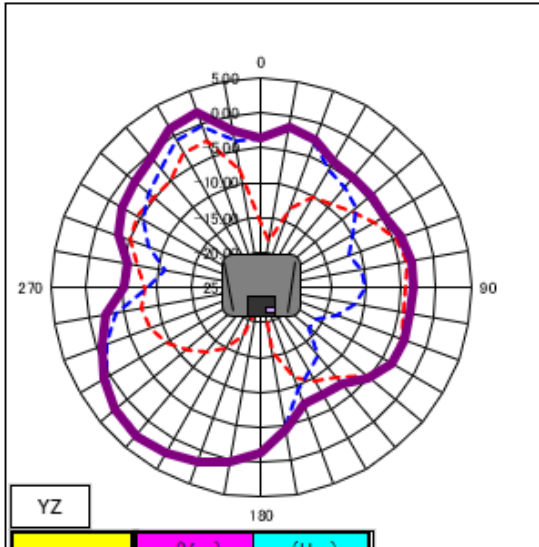
Total Average Gain  
**-3.64 dBi**

# Antenna Radiation Pattern (Base Unit)

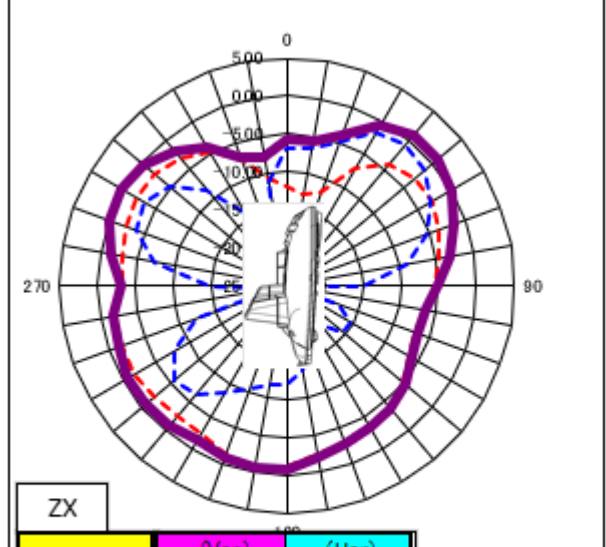
KX-TGF850 Antenna 2 (Wire)




XY			
<b>Max Gain</b>	(Ver) -6.3 dBi	(Hor) 1.4 dBi	
<b>Ave Gain</b>	(Ver) -8.8 dBi	(Hor) -4.0 dBi	(V+H) Ave -2.8 dBi



YZ			
<b>Max Gain</b>	(Ver) -2.6 dBi	(Hor) 2.6 dBi	
<b>Ave Gain</b>	(Ver) -7.0 dBi	(Hor) -3.1 dBi	(V+H) Ave -1.6 dBi



ZX			
<b>Max Gain</b>	(Ver) -0.8 dBi	(Hor) -0.7 dBi	
<b>Ave Gain</b>	(Ver) -3.6 dBi	(Hor) -7.1 dBi	(V+H) Ave -2.0 dBi



<i>Total Average Gain</i>
<b>-2.10 dBi</b>