
Appendix for the Report
Dosimetric Assessment of the
Portable Device Panasonic KX-TGA660
(FCC ID: ACJ96NKX-TGA660)
According to the FCC Requirements
SAR Distribution Plots

November 30, 2010
IMST GmbH
Carl-Friedrich-Gauß-Str. 2
D-47475 Kamp-Lintfort

Customer
Panasonic System Network Co., Ltd.
1-62, 4-chome, Minoshima, Hakata-ku,
Fukuoka 812-8531
Japan

The test results only relate to the items tested. This report shall not be reproduced except in full without the written approval of the testing laboratory.

Table of Contents

1	SAR DISTRIBUTION PLOTS, HEAD MEASUREMENTS.....	3
2	SAR DISTRIBUTION PLOTS, BODY MEASUREMENTS	7
3	SAR Z-AXIS SCANS (VALIDATION)	9
4	SAR Z-AXIS SCANS (MEASUREMENTS).....	10

1 SAR Distribution Plots, Head Measurements

Test Laboratory: Imst GmbH, DASY Yellow (II); File Name: [TGA660_yplm_1.da4](#)

DUT: Panasonic; Type: KX-TGA660;

Program Name: DECT

Communication System: DECT US; Frequency: 1924.99 MHz; Duty Cycle: 1:24

Medium parameters used: $f = 1924.99$ MHz; $\sigma = 1.42$ mho/m; $\epsilon_r = 41.2$; $\rho = 1000$ kg/m³

Phantom section: Left Section

DASY4 Configuration:

- Probe: EX3DV4 - SN3536; ConvF(7.77, 7.77, 7.77); Calibrated: 16.09.2010

- Sensor-Surface: 4mm (Mechanical Surface Detection)

- Electronics: DAE3 Sn335; Calibrated: 10.02.2010

- Phantom: SAM Glycol 1340; Type: QD 000 P40 CB; Serial: TP-1340

- Measurement SW: DASY4, V4.7 Build 80; Postprocessing SW: SEMCAD, V1.8 Build 186

Cheek Left/Area Scan (8x14x1): Measurement grid: dx=15mm, dy=15mm

Maximum value of SAR (measured) = 0.021 mW/g

Cheek Left/Zoom Scan (7x7x7)/Cube 0: Measurement grid: dx=5mm, dy=5mm, dz=5mm

Reference Value = 3.28 V/m; Power Drift = 0.104 dB

Peak SAR (extrapolated) = 0.037 W/kg

SAR(1 g) = 0.020 mW/g; SAR(10 g) = 0.010 mW/g

Maximum value of SAR (measured) = 0.023 mW/g

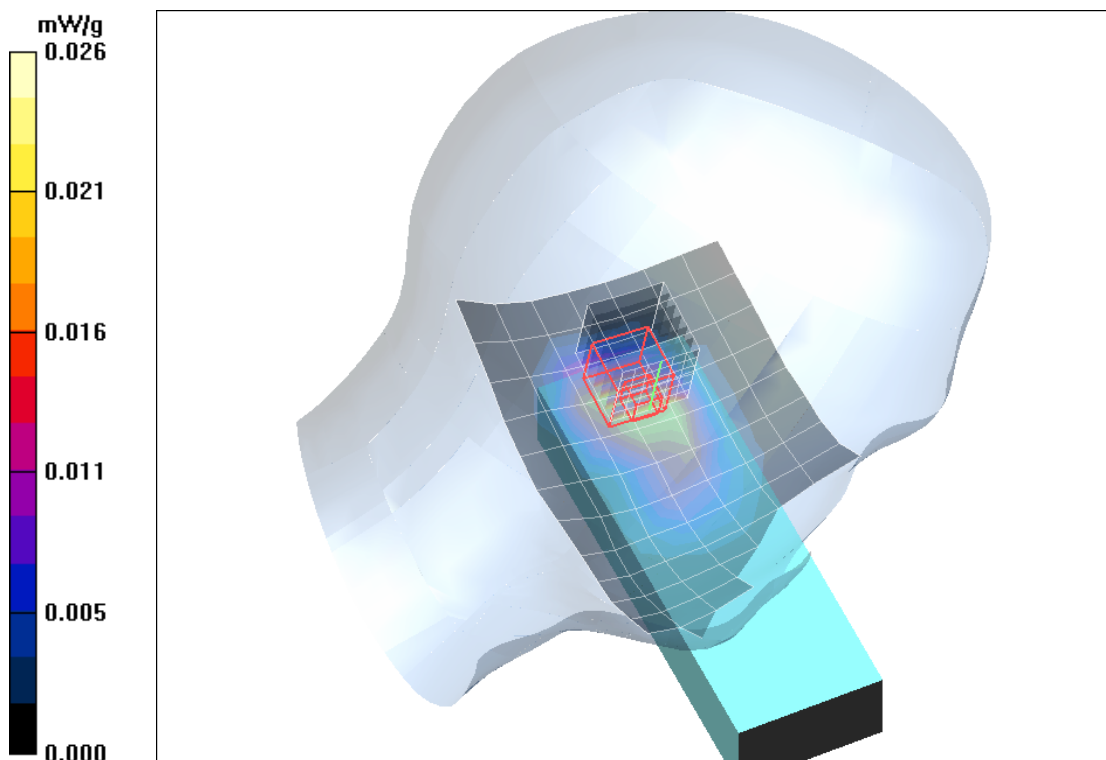


Fig. 1: SAR distribution for DECT US, channel 2, cheek position, left side of head (November 24, 2010; Ambient Temperature: 20.9°C; Liquid Temperature: 20.7°C).

Test Laboratory: Imst GmbH, DASY Yellow (II); **File Name:** [TGA660_yplm_2.da4](#)

DUT: Panasonic; **Type:** KX-TGA660;

Program Name: DECT

Communication System: DECT US; Frequency: 1924.99 MHz; Duty Cycle: 1:24

Medium parameters used: $f = 1924.99$ MHz; $\sigma = 1.42$ mho/m; $\epsilon_r = 41.2$; $\rho = 1000$ kg/m³

Phantom section: Left Section

DASY4 Configuration:

- Probe: EX3DV4 - SN3536; ConvF(7.77, 7.77, 7.77); Calibrated: 16.09.2010

- Sensor-Surface: 4mm (Mechanical Surface Detection)

- Electronics: DAE3 Sn335; Calibrated: 10.02.2010

- Phantom: SAM Glycol 1340; Type: QD 000 P40 CB; Serial: TP-1340

- Measurement SW: DASY4, V4.7 Build 80; Postprocessing SW: SEMCAD, V1.8 Build 186

Tilted Left/Area Scan (8x14x1): Measurement grid: dx=15mm, dy=15mm

Maximum value of SAR (measured) = 0.021 mW/g

Tilted Left/Zoom Scan (7x7x7)/Cube 0: Measurement grid: dx=5mm, dy=5mm, dz=5mm

Reference Value = 3.49 V/m; Power Drift = 0.172 dB

Peak SAR (extrapolated) = 0.031 W/kg

SAR(1 g) = 0.019 mW/g; SAR(10 g) = 0.00976 mW/g

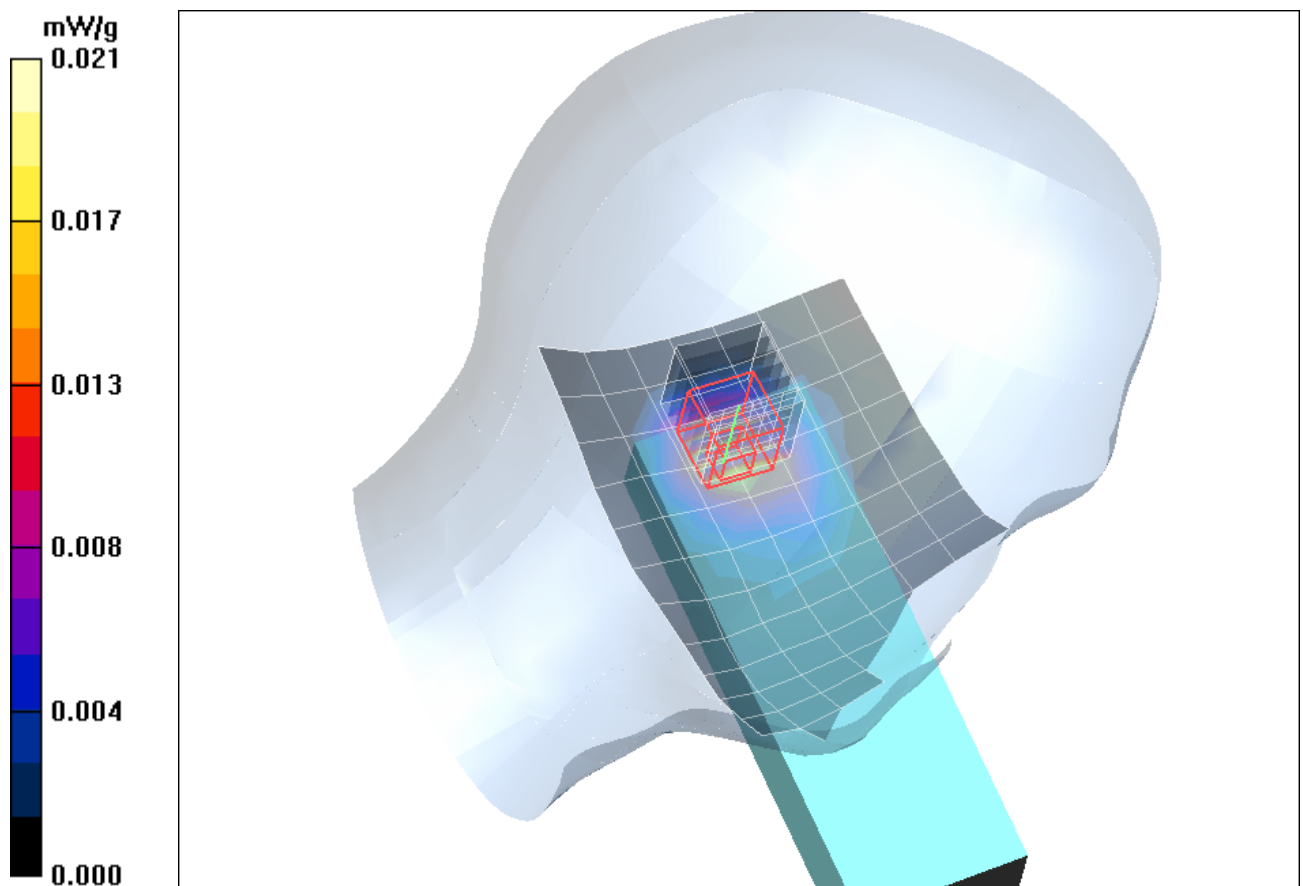


Fig. 2: SAR distribution for DECT US, channel 2, tilted position, left side of head (November 24, 2010; Ambient Temperature: 20.9°C; Liquid Temperature: 20.7°C).

Test Laboratory: Imst GmbH, DASY Yellow (II); **File Name:** [TGA660_yprm_1.da4](#)

DUT: Panasonic; **Type:** KX-TGA660;

Program Name: DECT

Communication System: DECT US; Frequency: 1924.99 MHz; Duty Cycle: 1:24

Medium parameters used: $f = 1924.99$ MHz; $\sigma = 1.42$ mho/m; $\epsilon_r = 41.2$; $\rho = 1000$ kg/m³

Phantom section: Right Section

DASY4 Configuration:

- Probe: EX3DV4 - SN3536; ConvF(7.77, 7.77, 7.77); Calibrated: 16.09.2010

- Sensor-Surface: 4mm (Mechanical Surface Detection)

- Electronics: DAE3 Sn335; Calibrated: 10.02.2010

- Phantom: SAM Glycol 1340; Type: QD 000 P40 CB; Serial: TP-1340

- Measurement SW: DASY4, V4.7 Build 80; Postprocessing SW: SEMCAD, V1.8 Build 186

Cheek Right/Area Scan (8x14x1): Measurement grid: dx=15mm, dy=15mm

Maximum value of SAR (measured) = 0.023 mW/g

Cheek Right/Zoom Scan (7x7x7)/Cube 0: Measurement grid: dx=5mm, dy=5mm, dz=5mm

Reference Value = 3.40 V/m; Power Drift = 0.038 dB

Peak SAR (extrapolated) = 0.042 W/kg

SAR(1 g) = 0.022 mW/g; SAR(10 g) = 0.011 mW/g

Maximum value of SAR (measured) = 0.025 mW/g

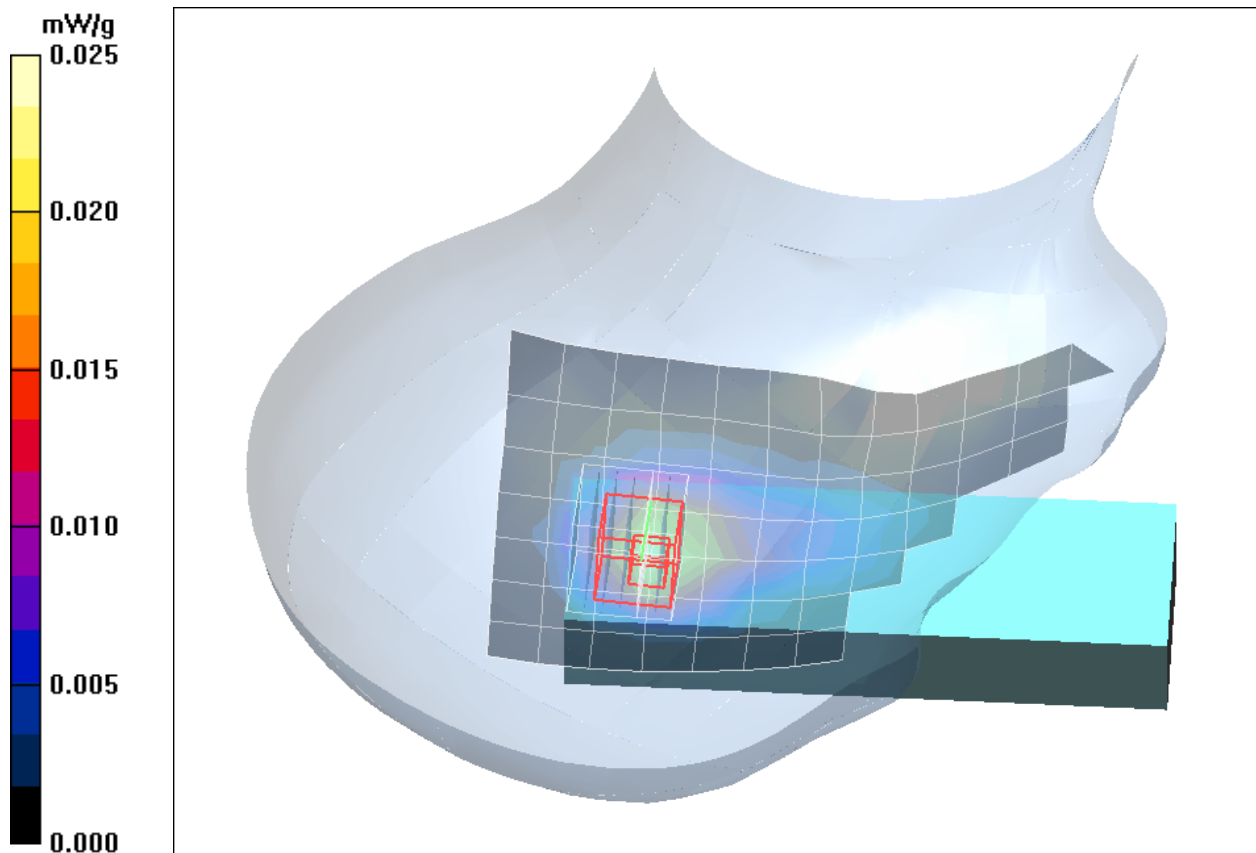


Fig. 3: SAR distribution for DECT US, channel 2, cheek position, right side of head (November 24, 2010; Ambient Temperature: 20.9°C; Liquid Temperature: 20.7°C).

Test Laboratory: Imst GmbH, DASY Yellow (II); **File Name:** [TGA660_yprm_2.da4](#)

DUT: Panasonic; **Type:** KX-TGA660;

Program Name: DECT

Communication System: DECT US; Frequency: 1924.99 MHz; Duty Cycle: 1:24

Medium parameters used: $f = 1924.99$ MHz; $\sigma = 1.42$ mho/m; $\epsilon_r = 41.2$; $\rho = 1000$ kg/m³

Phantom section: Right Section

DASY4 Configuration:

- Probe: EX3DV4 - SN3536; ConvF(7.77, 7.77, 7.77); Calibrated: 16.09.2010

- Sensor-Surface: 4mm (Mechanical Surface Detection)

- Electronics: DAE3 Sn335; Calibrated: 10.02.2010

- Phantom: SAM Glycol 1340; Type: QD 000 P40 CB; Serial: TP-1340

- Measurement SW: DASY4, V4.7 Build 80; Postprocessing SW: SEMCAD, V1.8 Build 186

Tilted Right/Area Scan (8x14x1): Measurement grid: dx=15mm, dy=15mm

Maximum value of SAR (measured) = 0.019 mW/g

Tilted Right/Zoom Scan (7x7x7)/Cube 0: Measurement grid: dx=5mm, dy=5mm, dz=5mm

Reference Value = 3.38 V/m; Power Drift = 0.166 dB

Peak SAR (extrapolated) = 0.036 W/kg

SAR(1 g) = 0.019 mW/g; SAR(10 g) = 0.010 mW/g

Maximum value of SAR (measured) = 0.021 mW/g

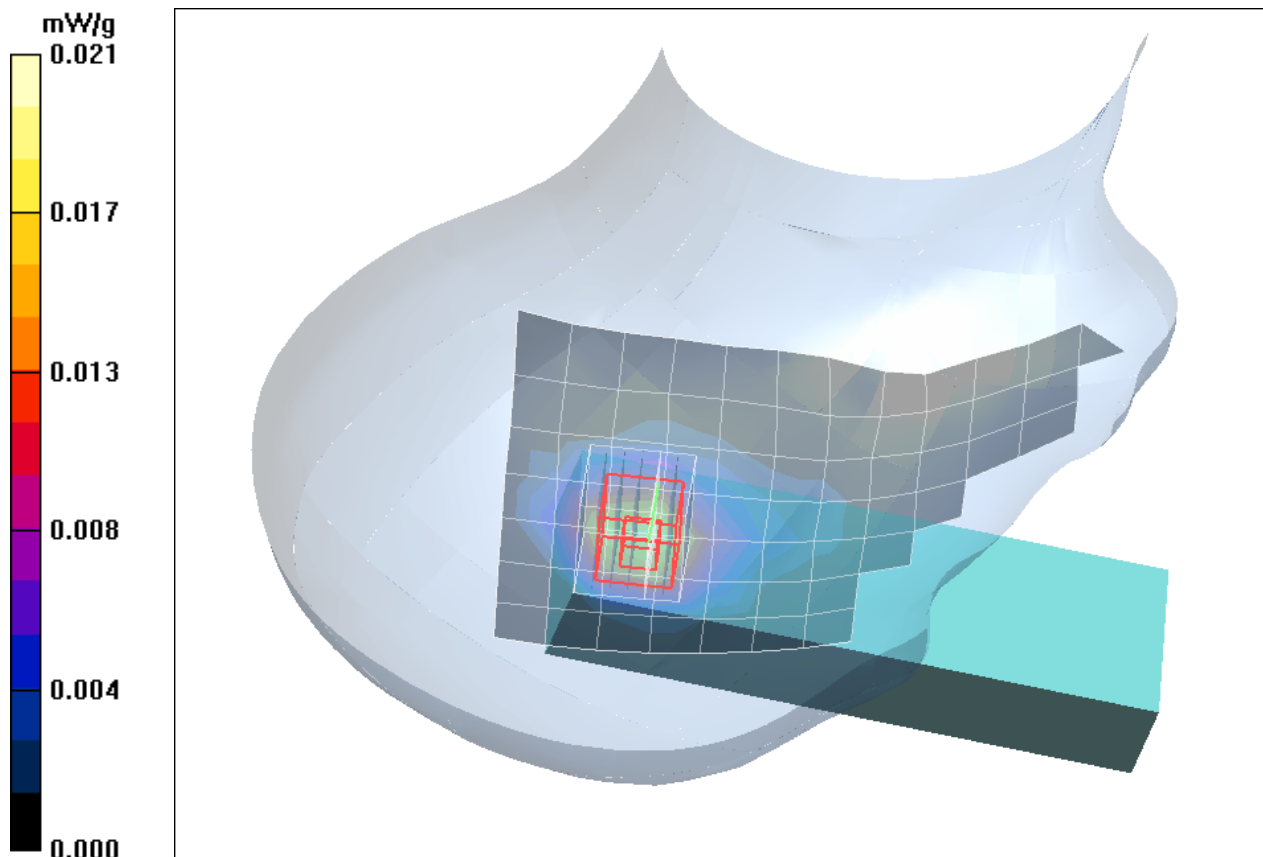


Fig. 4: SAR distribution for DECT US, channel 2, tilted position, right side of head (November 24, 2010; Ambient Temperature: 20.9°C; Liquid Temperature: 20.7°C)

2 SAR Distribution Plots, Body Measurements

Test Laboratory: Imst GmbH, DASY Yellow (II); File Name: [TGA660_yphm_1_hs_up.da4](#)

DUT: Panasonic; Type: KX-TGA660;

Program Name: DECT

Communication System: DECT US; Frequency: 1924.99 MHz; Duty Cycle: 1:24

Medium parameters used: $f = 1924.99$ MHz; $\sigma = 1.56$ mho/m; $\epsilon_r = 52.4$; $\rho = 1000$ kg/m³

Phantom section: Flat Section

DASY4 Configuration:

- Probe: EX3DV4 - SN3536; ConvF(7.89, 7.89, 7.89); Calibrated: 16.09.2010

- Sensor-Surface: 4mm (Mechanical Surface Detection)

- Electronics: DAE3 Sn335; Calibrated: 10.02.2010

- Phantom: SAM Glycol 1340; Type: QD 000 P40 CB; Serial: TP-1340

- Measurement SW: DASY4, V4.7 Build 80; Postprocessing SW: SEMCAD, V1.8 Build 186

Body Worn/Area Scan (8x15x1): Measurement grid: dx=15mm, dy=15mm

Maximum value of SAR (measured) = 0.024 mW/g

Body Worn/Zoom Scan (7x7x7)/Cube 0: Measurement grid: dx=5mm, dy=5mm, dz=5mm

Reference Value = 1.81 V/m; Power Drift = 0.120 dB

Peak SAR (extrapolated) = 0.038 W/kg

SAR(1 g) = 0.022 mW/g; SAR(10 g) = 0.012 mW/g

Maximum value of SAR (measured) = 0.025 mW/g

Body Worn/Zoom Scan (7x7x7)/Cube 1: Measurement grid: dx=5mm, dy=5mm, dz=5mm

Reference Value = 1.81 V/m; Power Drift = 0.120 dB

Peak SAR (extrapolated) = 0.036 W/kg

SAR(1 g) = 0.020 mW/g; SAR(10 g) = 0.010 mW/g

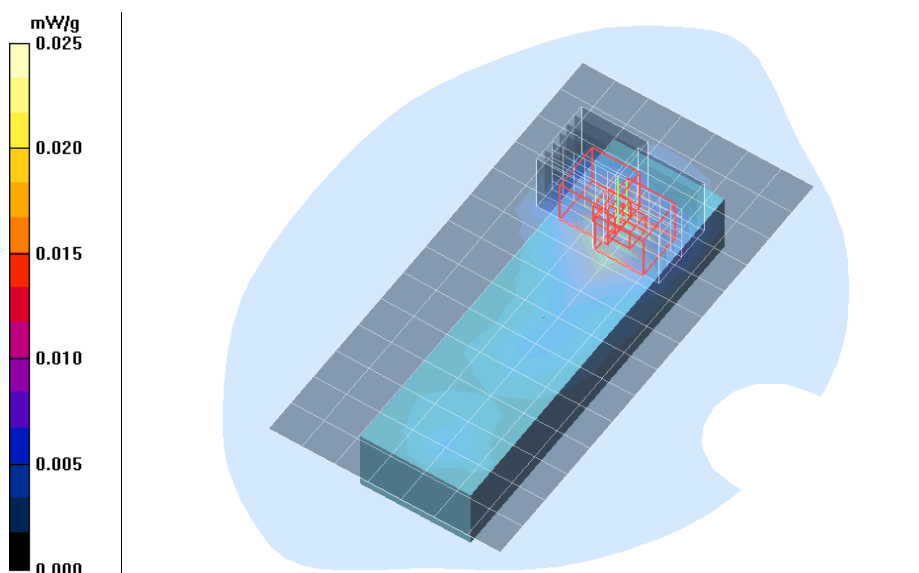


Fig. 5: SAR distribution for DECT US, channel 2, body worn configuration, display towards the phantom, belt clip and headset attached, 0 mm distance (November 29, 2010; Ambient Temperature: 21.4° C; Liquid Temperature: 21.1° C).

Test Laboratory: Imst GmbH, DASY Yellow (II); **File Name:** [TGA660_yphm_2_hs_down.da4](#)

DUT: Panasonic; **Type:** KX-TGA660;

Program Name: DECT

Communication System: DECT US; Frequency: 1924.99 MHz; Duty Cycle: 1:24

Medium parameters used: $f = 1924.99$ MHz; $\sigma = 1.56$ mho/m; $\epsilon_r = 52.4$; $\rho = 1000$ kg/m³

Phantom section: Flat Section

DASY4 Configuration:

- Probe: EX3DV4 - SN3536; ConvF(7.89, 7.89, 7.89); Calibrated: 16.09.2010

- Sensor-Surface: 4mm (Mechanical Surface Detection)

- Electronics: DAE3 Sn335; Calibrated: 10.02.2010

- Phantom: SAM Glycol 1340; Type: QD 000 P40 CB; Serial: TP-1340

- Measurement SW: DASY4, V4.7 Build 80; Postprocessing SW: SEMCAD, V1.8 Build 186

Body Worn/Area Scan (8x15x1): Measurement grid: dx=15mm, dy=15mm

Maximum value of SAR (measured) = 0.005 mW/g

Body Worn/Zoom Scan (7x7x7)/Cube 0: Measurement grid: dx=5mm, dy=5mm, dz=5mm

Reference Value = 1.38 V/m; Power Drift = 0.087 dB

Peak SAR (extrapolated) = 0.014 W/kg

SAR(1 g) = 0.00475 mW/g; SAR(10 g) = 0.00231 mW/g

Maximum value of SAR (measured) = 0.006 mW/g

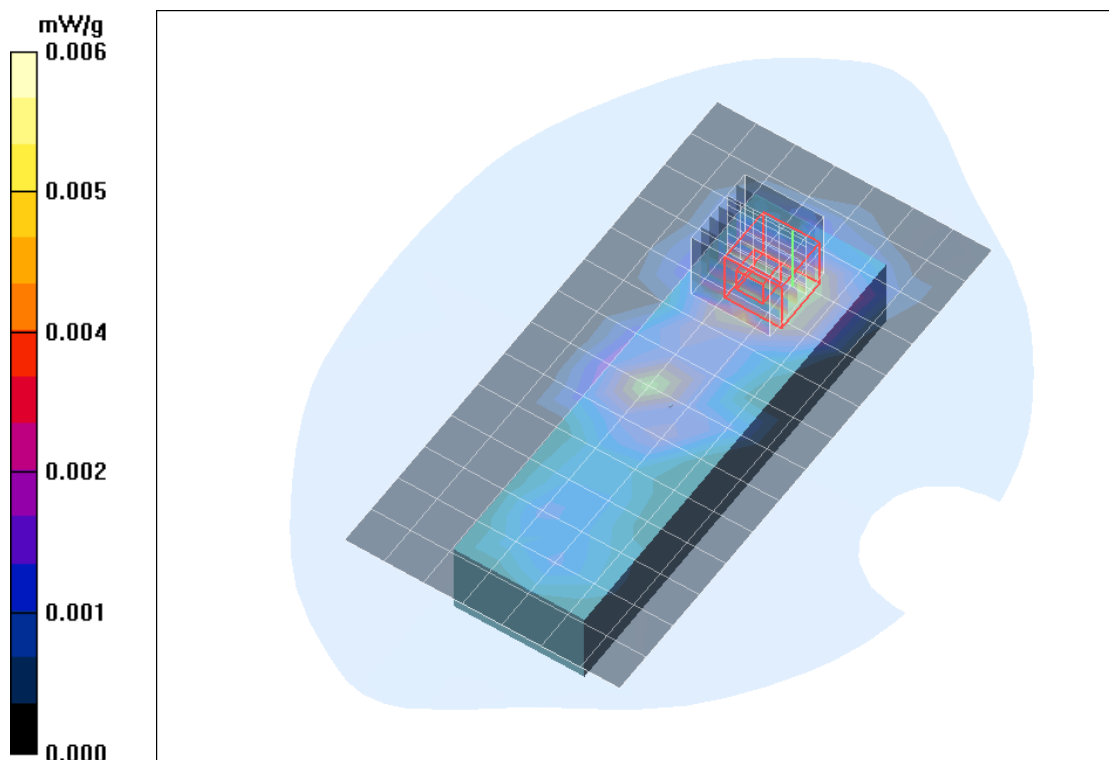


Fig. 6: SAR distribution for DECT US, channel 2, body worn configuration, display towards the ground, belt clip and headset attached, 0 mm distance (November 29, 2010; Ambient Temperature: 21.4° C; Liquid Temperature: 21.1° C).

3 SAR z-axis scans (Validation)

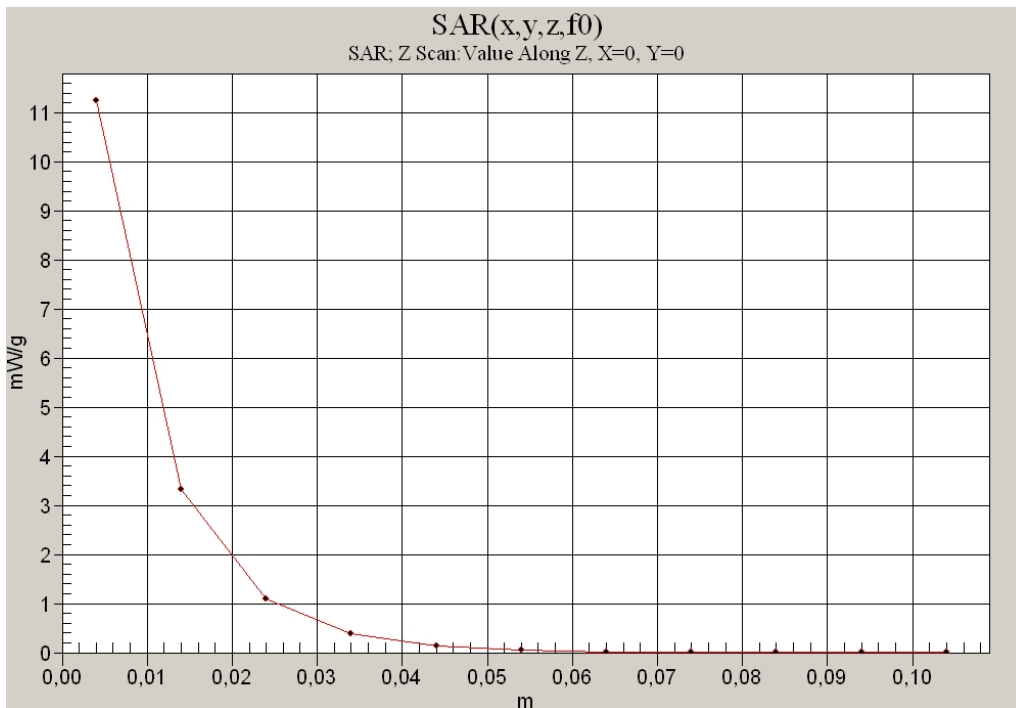


Fig. 7: SAR versus liquid depth, 1900 MHz, head (November 24, 2010; Ambient Temperature: 20.9° C; Liquid Temperature : 20.6° C).

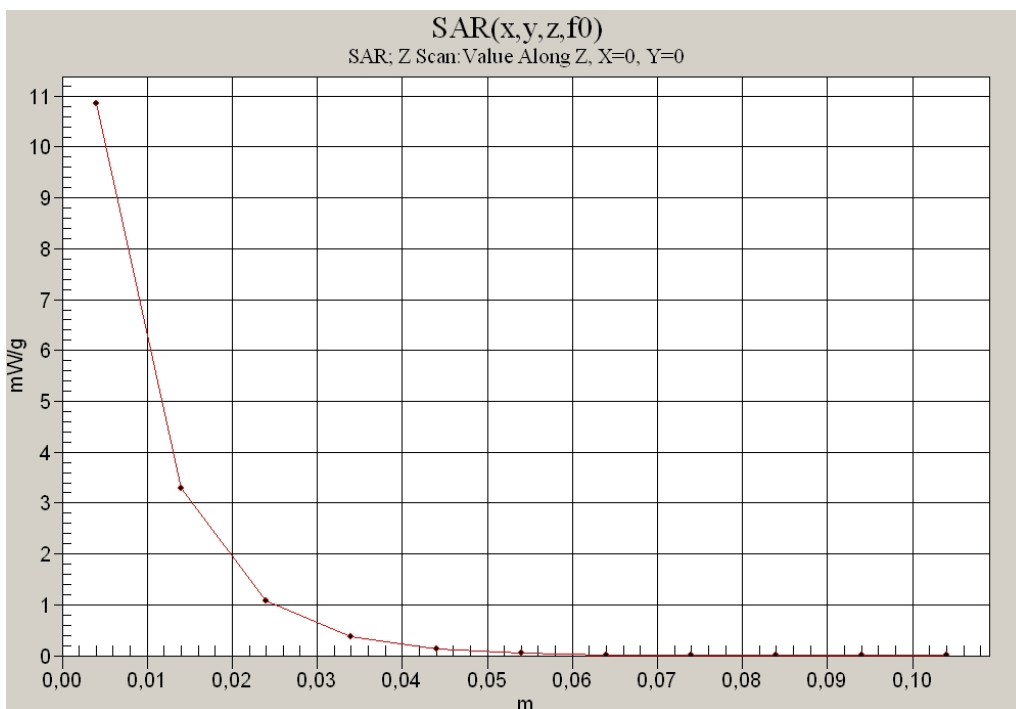


Fig. 8: SAR versus liquid depth, 1900 MHz, body (November 29, 2010; Ambient Temperature: 21.4° C; Liquid Temperature : 21.2° C).

4 SAR z-axis scans (Measurements)

The following pictures show the plots of SAR versus liquid depth for the worst case values.

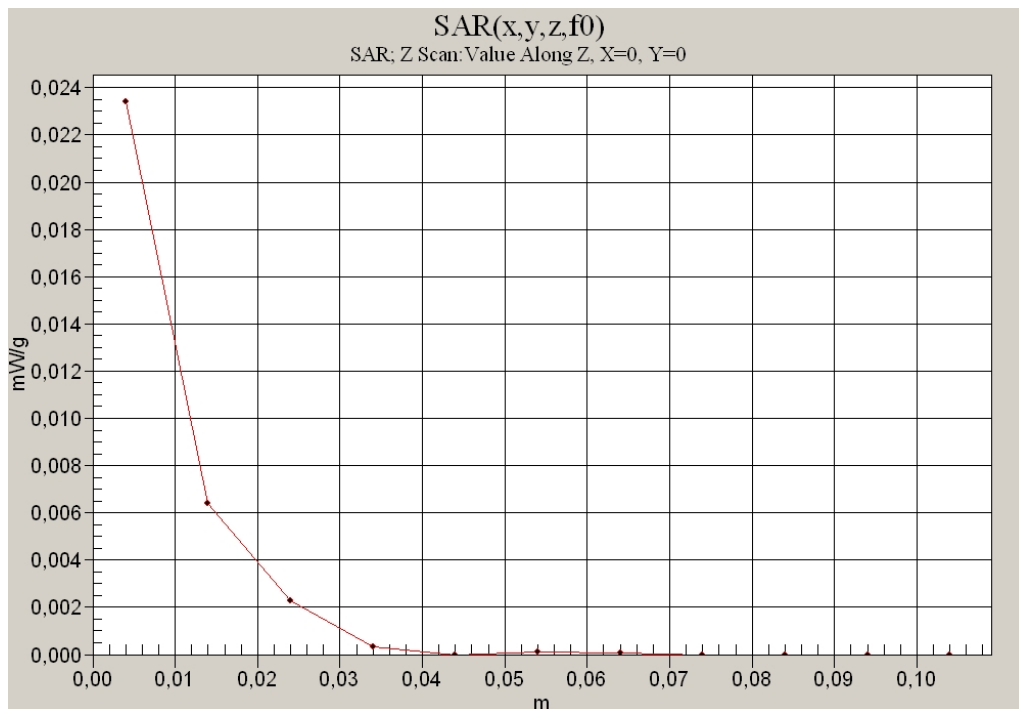


Fig. 9: SAR versus liquid depth, head: DECT US, channel 2, cheek position, right side of head (November 24, 2010; Ambient Temperature: 20.9° C; Liquid Temperature: 20.7° C).

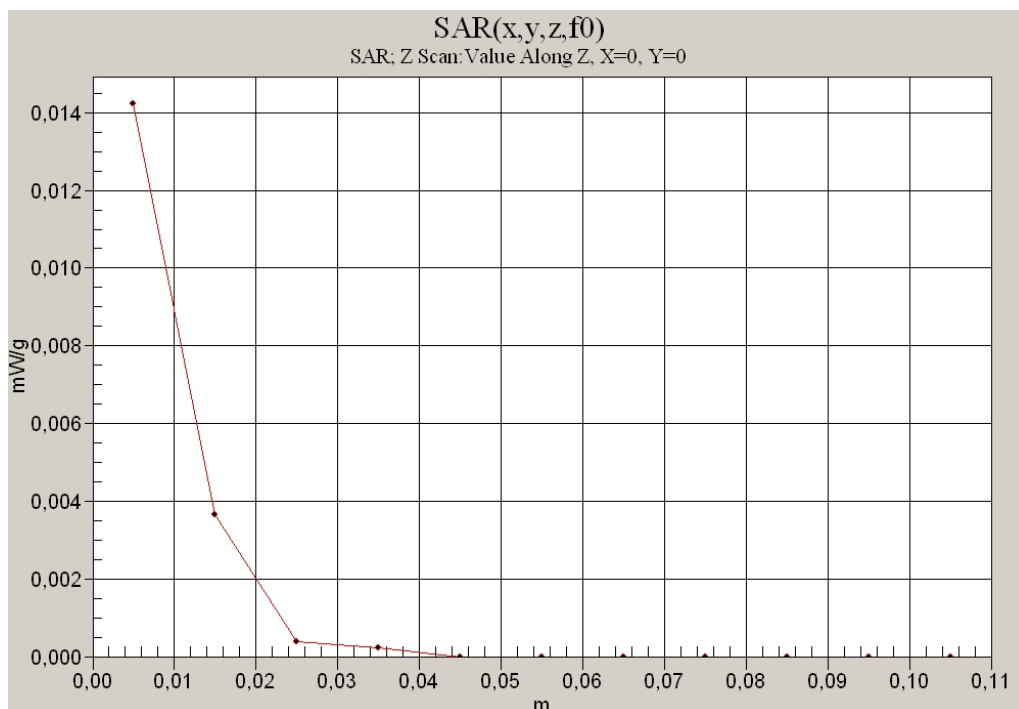


Fig. 10: SAR versus liquid depth, body: DECT US, channel 2, belt clip and headset attached, display towards the phantom (November 29, 2010; Ambient Temperature: 21.4° C; Liquid Temperature: 21.1° C).