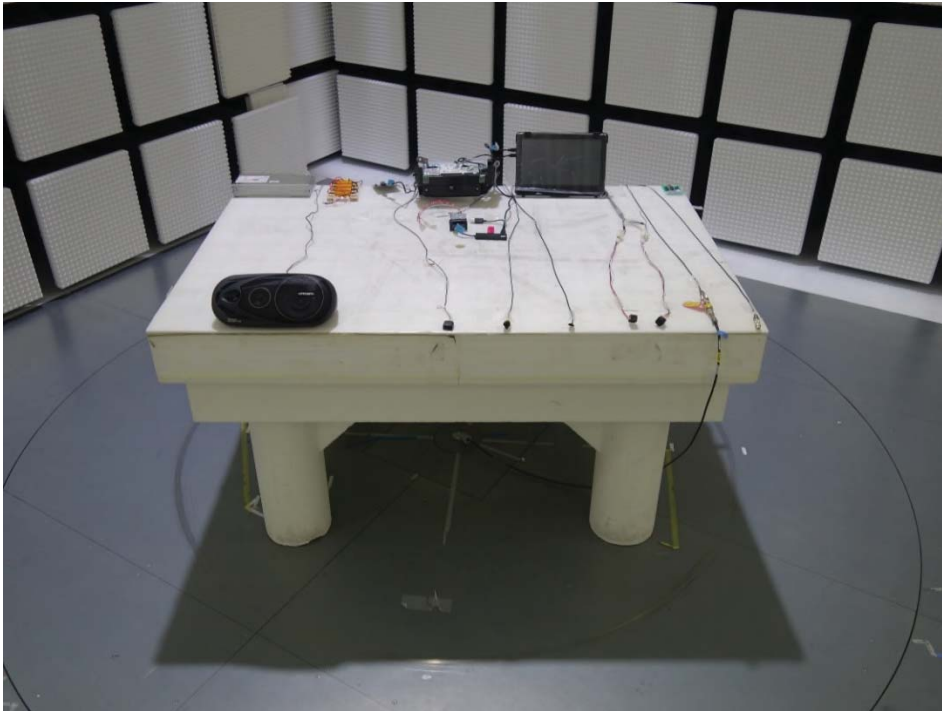
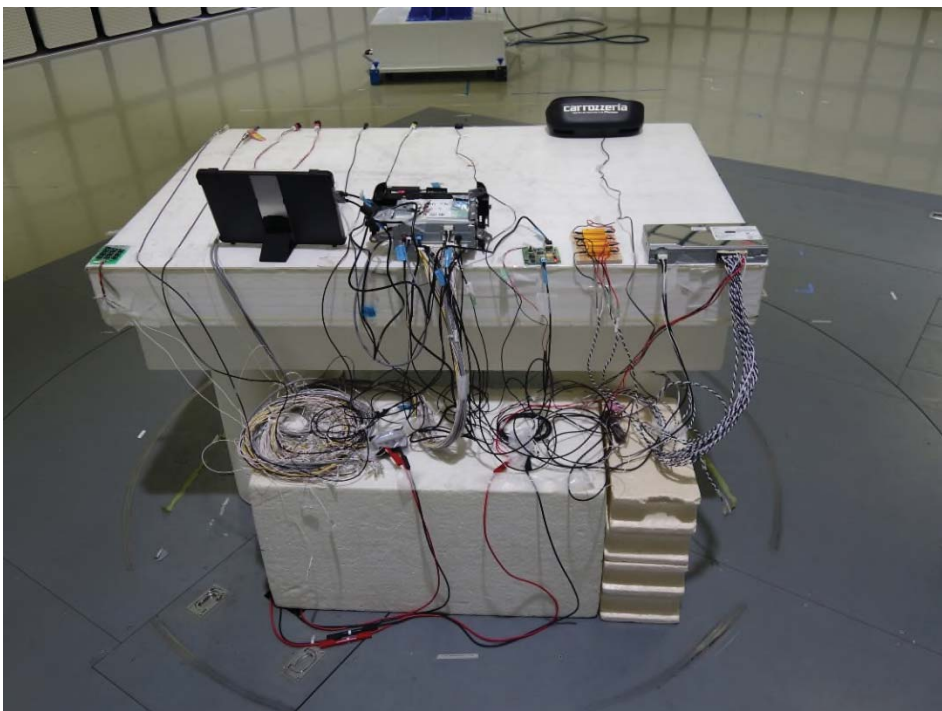


## 6. Photographs of the Test Setup

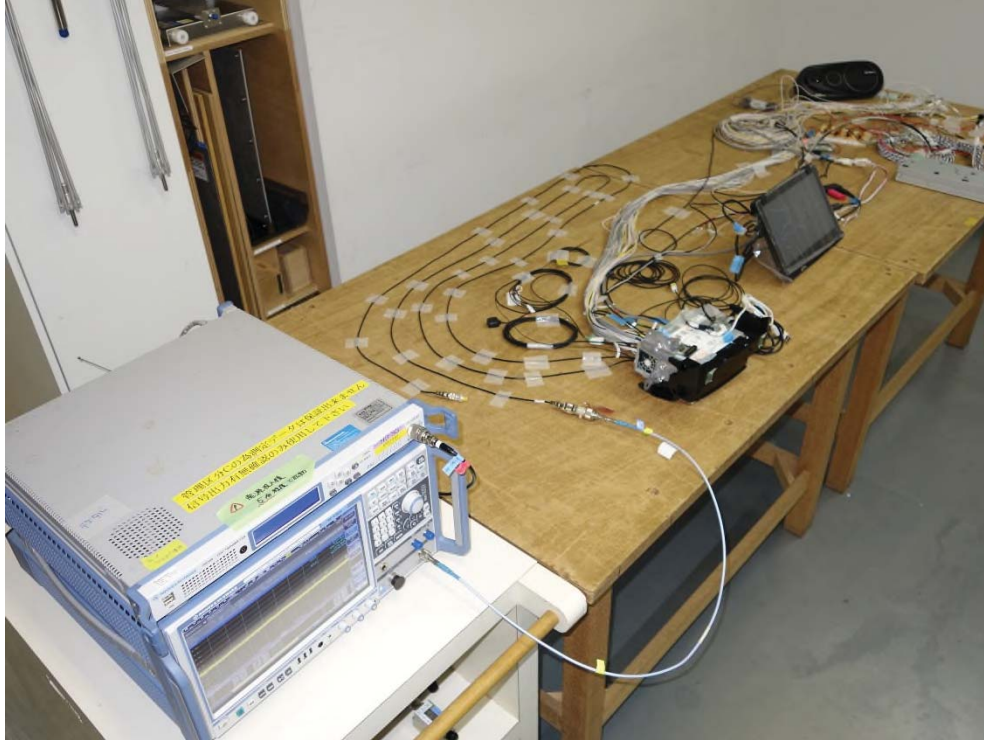
Photograph 1: Set-up for Radiated Emission, Front View



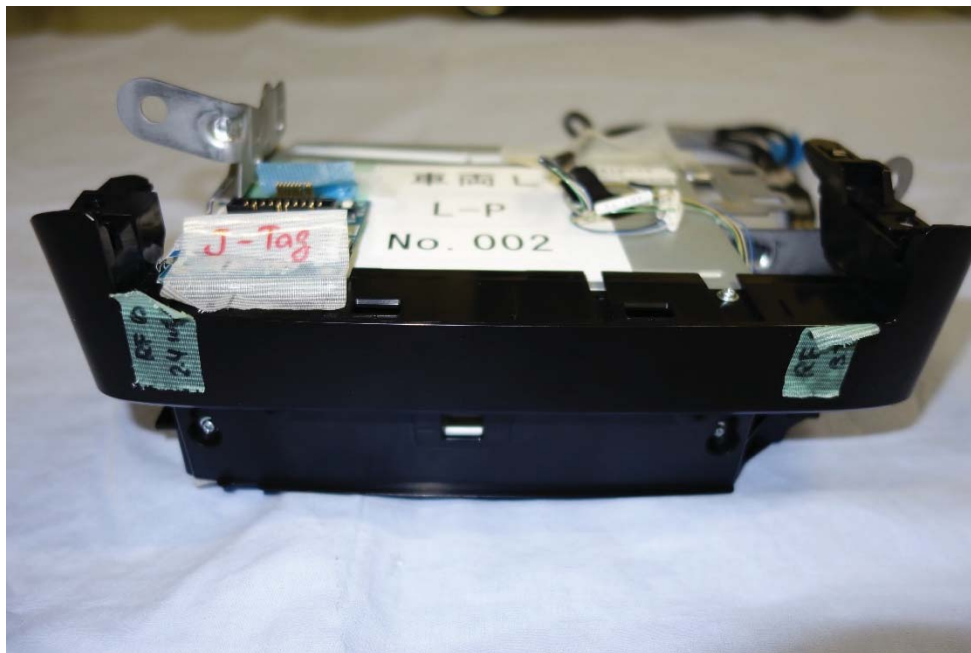
Photograph 2: Set-up for Radiated Emission, Rear View



**Photograph 3: Set-up for Antenna Power Conduction for Receivers**



**Photograph 4: EUT**

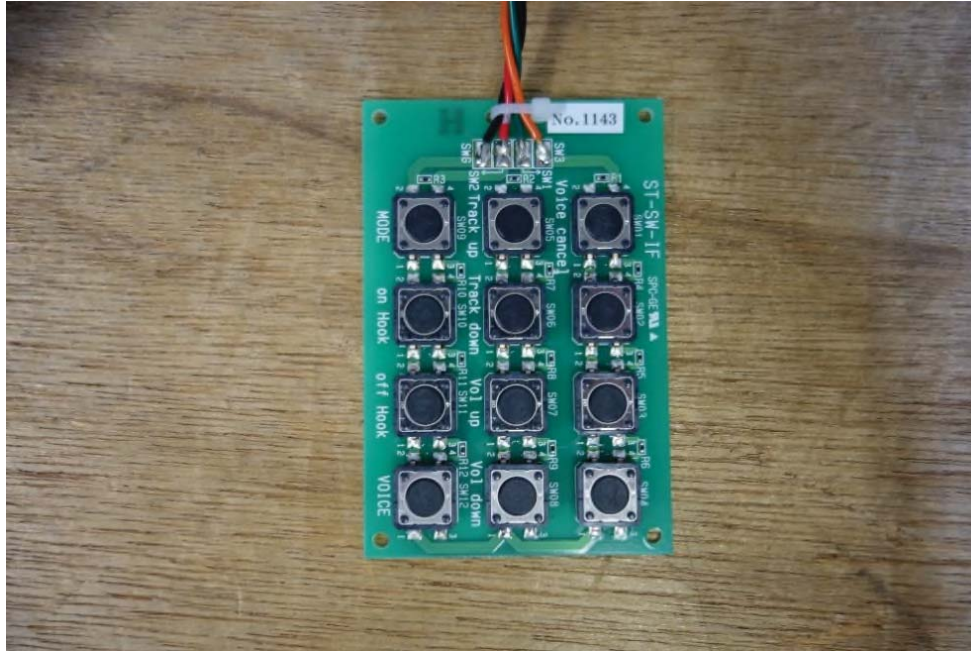


Prüfbericht-Nr.:  
Test Report No.:

**JP21P907 001**

Seite 78 von 82  
Page 78 of 82

**Photograph 5: Steering Switch (Test Jig)**



**Photograph 6: Dummy Load for Speaker (Test Jig)**

