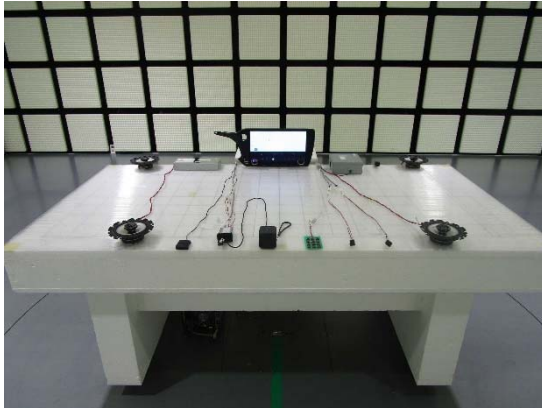


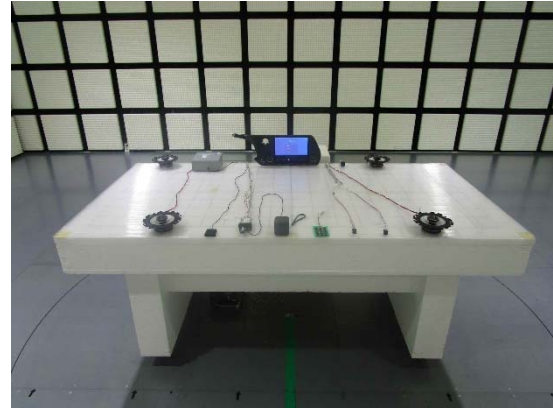
**APPENDIX 3: Photographs of test setup**

**Radiated Spurious Emission**

**EUT : Hi type(14 inch Display)  
Front**



**EUT : Lo type(9.8 inch Display)  
Front**



**Rear (Below 1 GHz)**



**Rear (Below 1 GHz)**



**Rear (Above 1 GHz)**

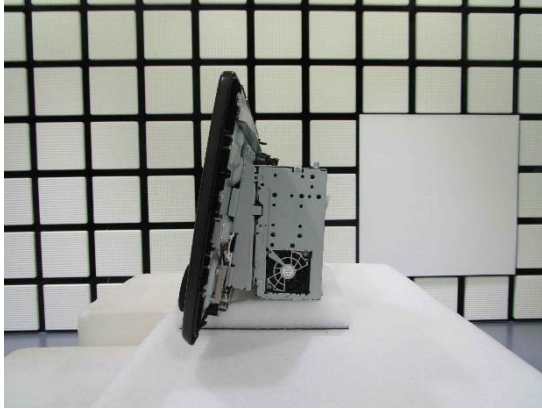


**Rear (Above 1 GHz)**

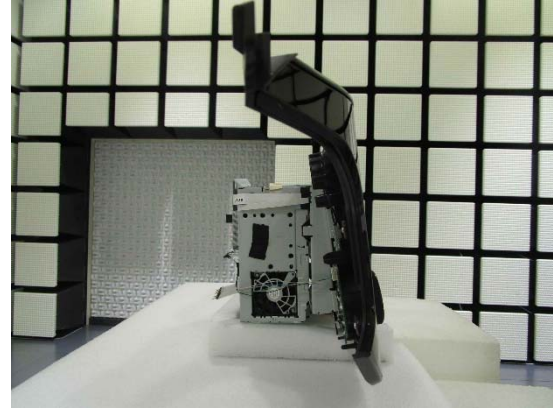


**Pre-Check Worst Case Position**

**EUT : Hi type (14 inch Display)  
0 deg.**



**EUT : Lo type (9.8 inch Display)  
0 deg.**



**30 deg.**

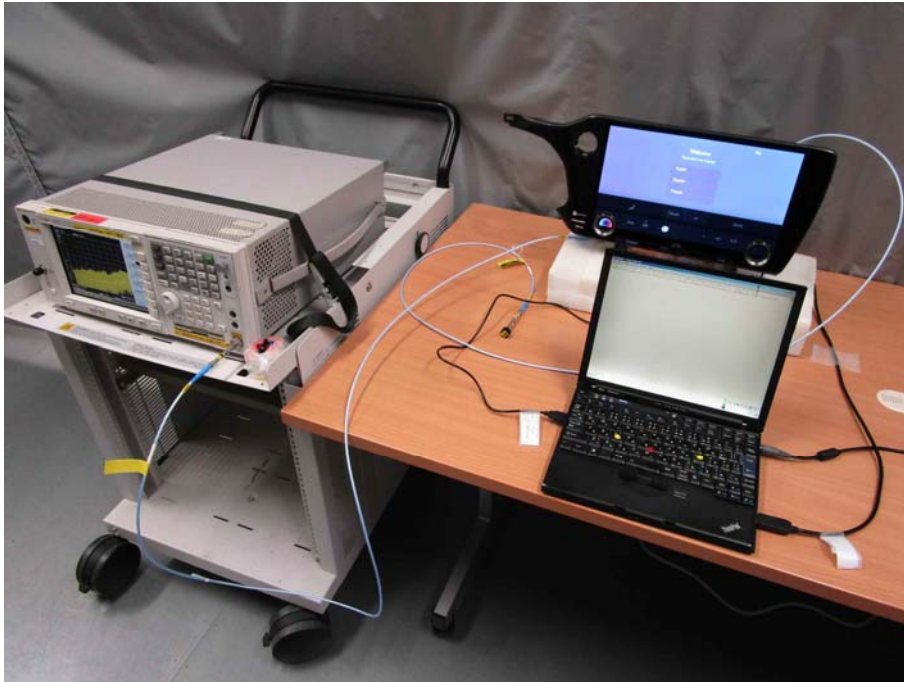


**30 deg.**

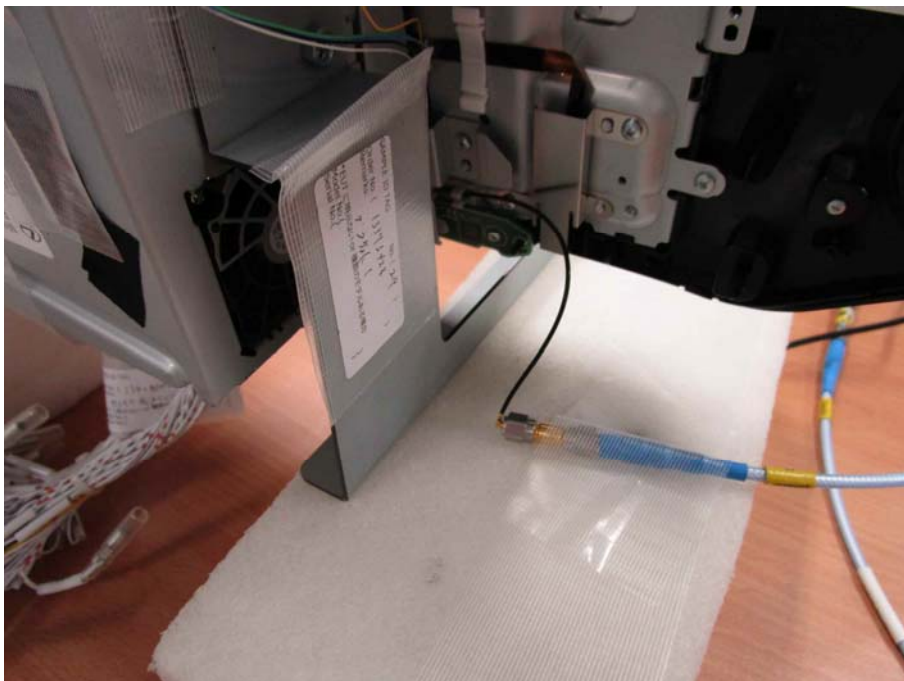


## Antenna Terminal Conducted Tests

For WLAN



**Photo 1**



**Photo 2**

---

**UL Japan, Inc.**

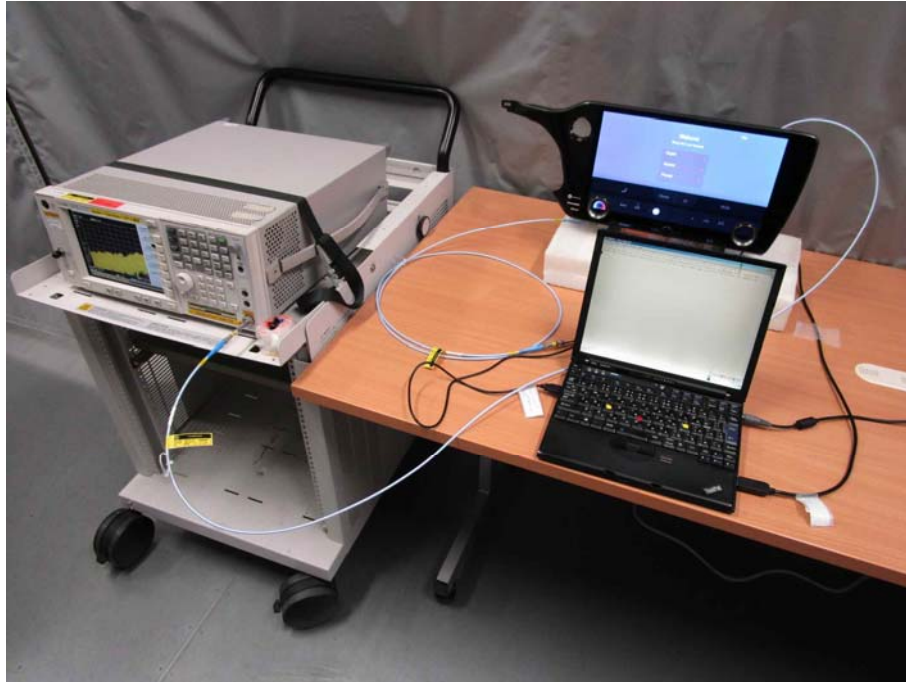
**Shonan EMC Lab.**

1-22-3 Megumigaoka, Hiratsuka-shi, Kanagawa-ken, 259-1220 JAPAN

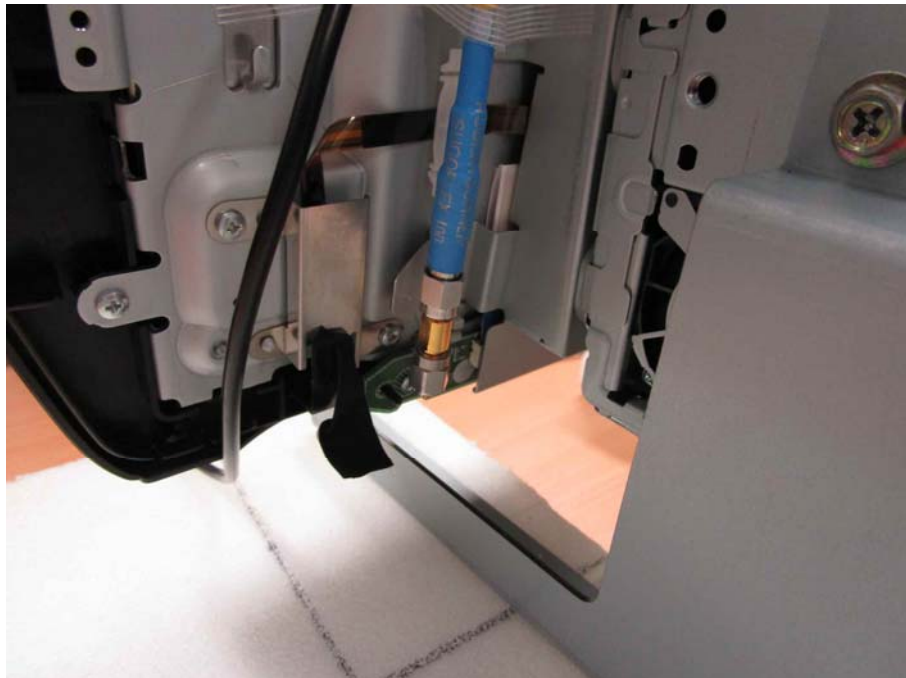
Telephone : +81 463 50 6400

Facsimile : +81 463 50 6401

For BT LE



**Photo 1**



**Photo 2**

**End of Report**

---

**UL Japan, Inc.**

**Shonan EMC Lab.**

1-22-3 Megumigaoka, Hiratsuka-shi, Kanagawa-ken, 259-1220 JAPAN

Telephone : +81 463 50 6400

Facsimile : +81 463 50 6401