

Internal Photos AT1804 ((Antenna Separated Type (TEMV))



Fig.1 AT1804



Fig.2 Main Unit



Fig.3 Antenna

Main Unit



Fig.4 Main Unit



Fig.5 Panel OPEN

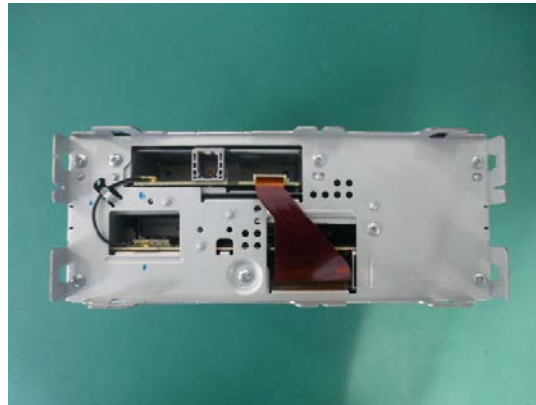


Fig.6 Without Panel

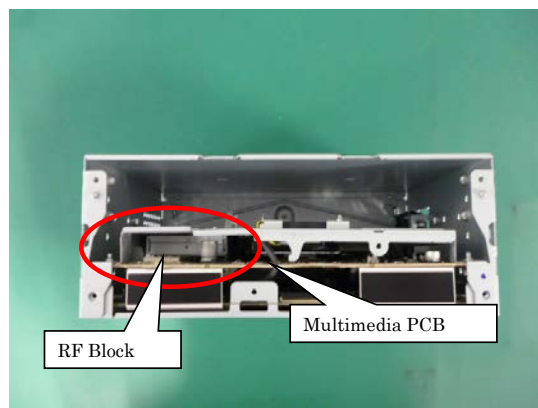


Fig.7 Without Front Plate

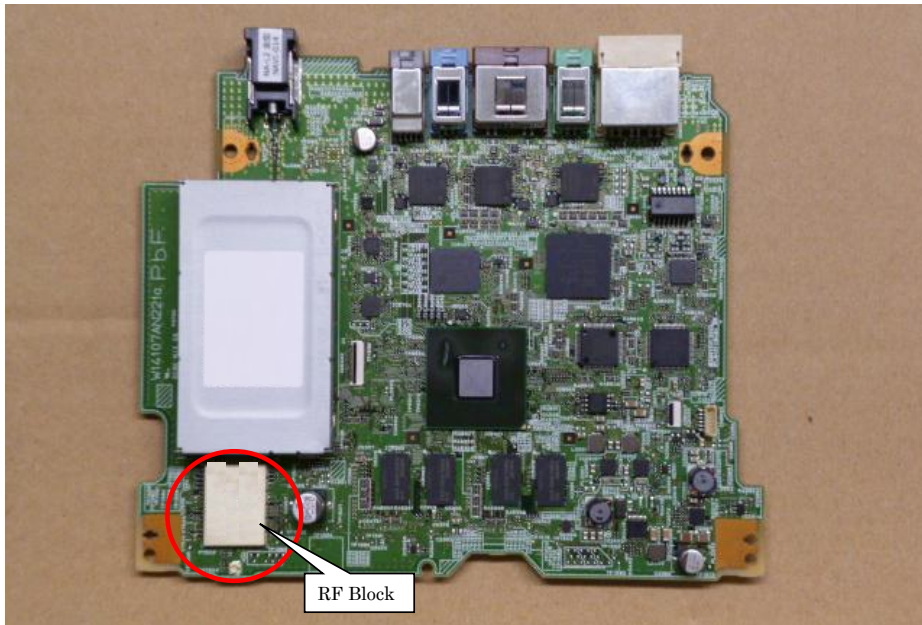


Fig.8 Multimedia PCB (Surface side)

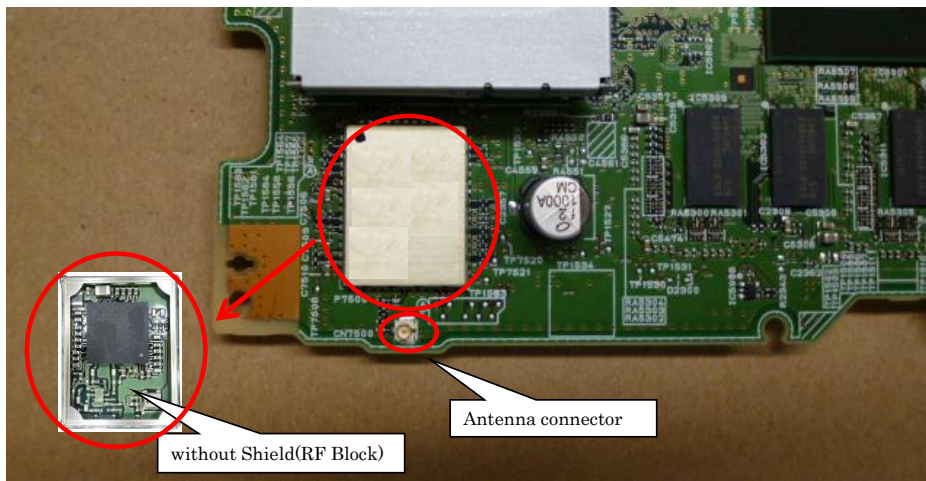


Fig.9 RF Block



Fig.10 Multimedia PCB (Back side)

Antenna Unit (Coaxial cable + RelayPCB +Antenna)

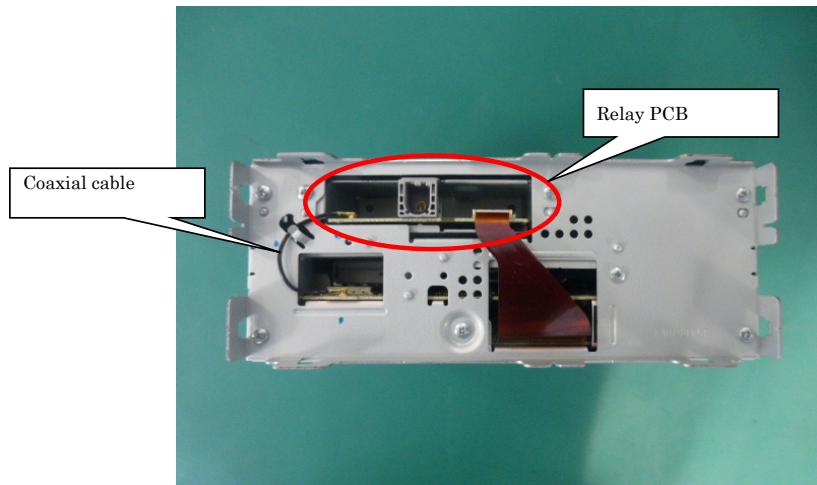


Fig.11 MainUnit Without Panel



Fig.12 Coaxial cable

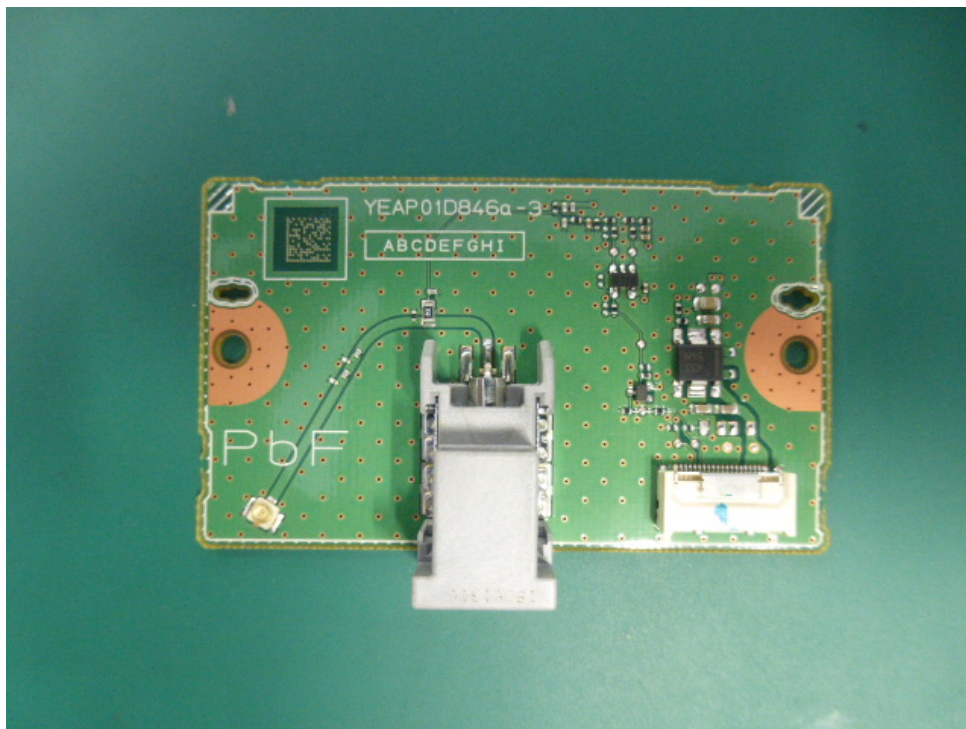


Fig.13 Relay PCB (Surface side)

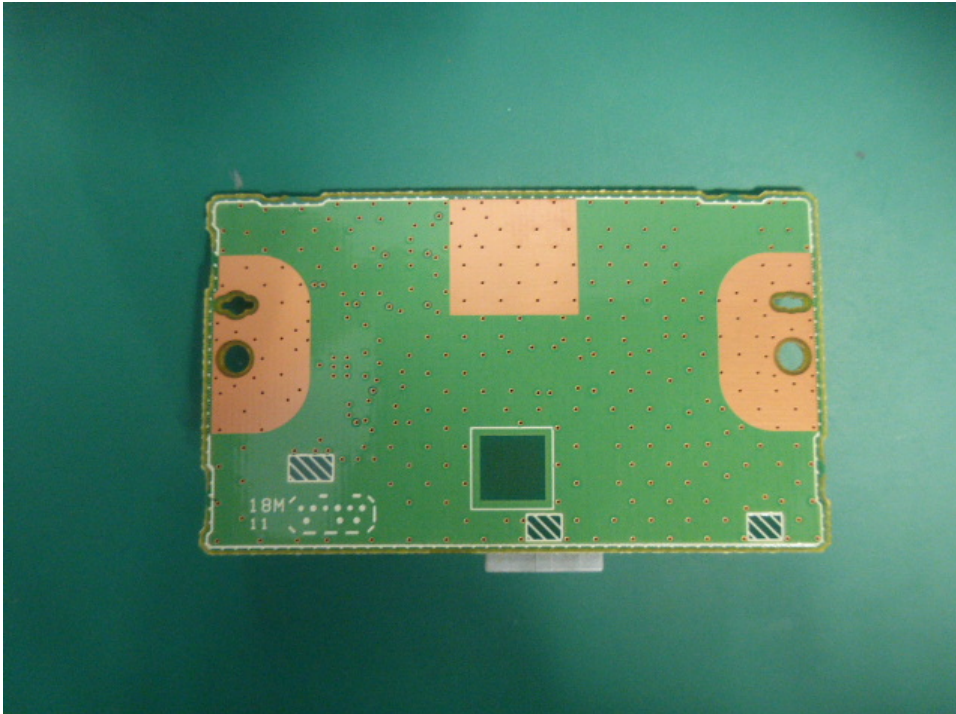


Fig.14 Relay PCB (Back side)

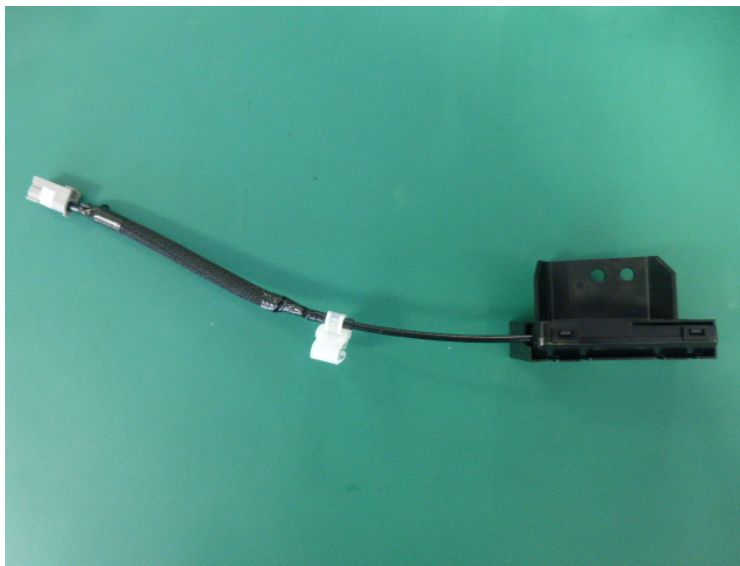


Fig.15 Antenna

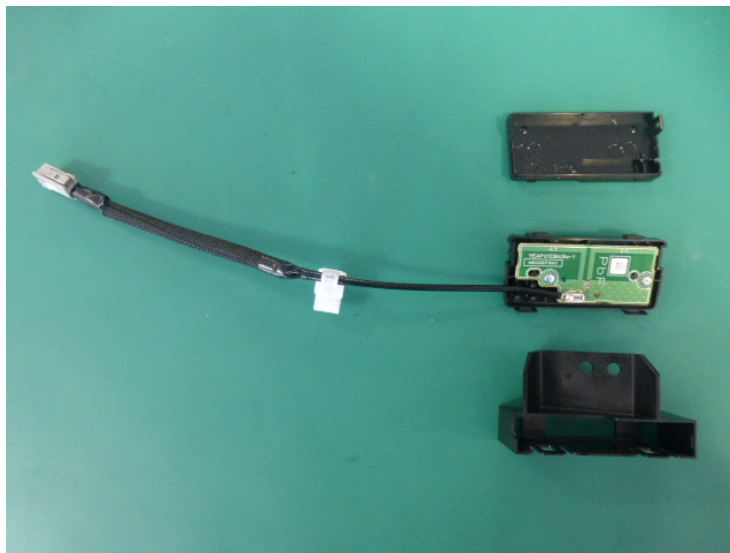


Fig.16 Antenna Cover OPEN

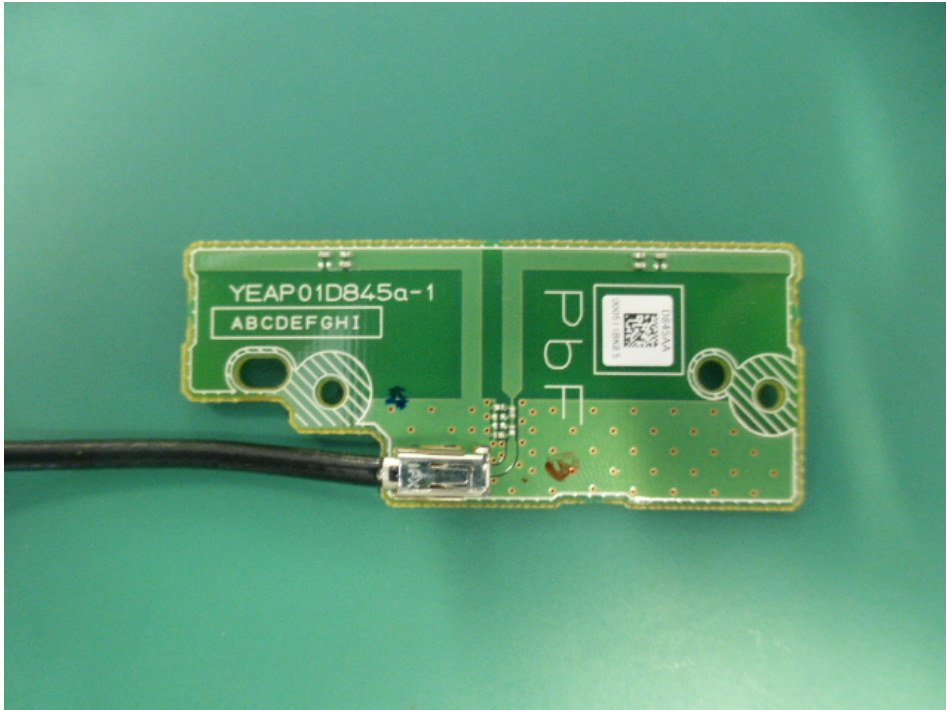


Fig.17 Antenna PCB (Surface side)

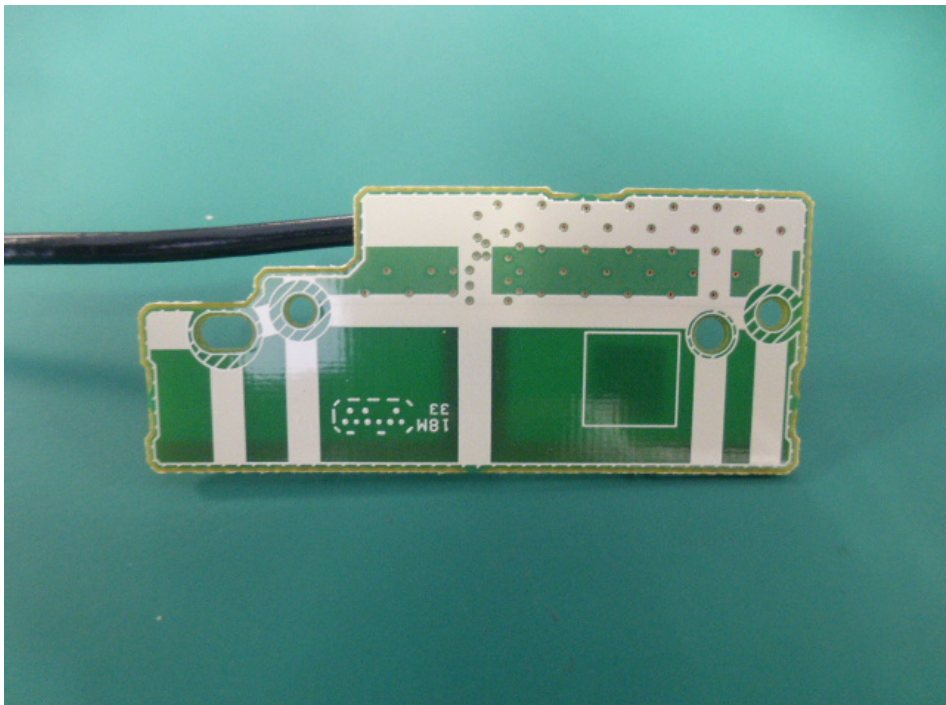


Fig.18 Antenna PCB (Back side)