

WIFI 2.4G_802.11b_Rear Face_0mm_11

DUT: EUT

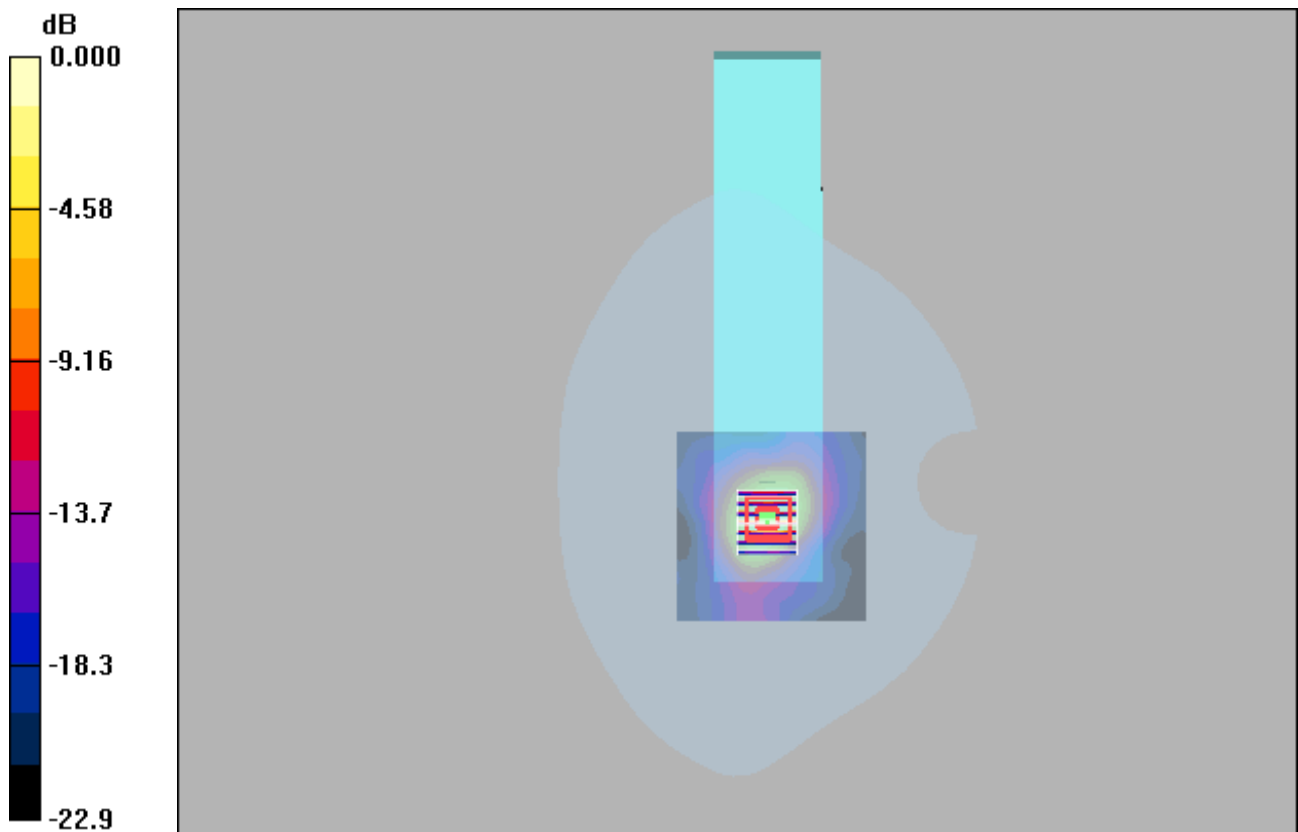
Communication System: Wlan 802.11b; Frequency: 2462 MHz; Duty Cycle: 1:1
Medium: H2450 Medium parameters used: $f = 2462$ MHz; $\sigma = 1.85$ mho/m; $\epsilon_r = 39.4$; $\rho = 1000$ kg/m³

DASY4 Configuration:

- Probe: ES3DV3 - SN3090; ConvF(4.68, 4.68, 4.68); Calibrated: 2023/3/15
- Sensor-Surface: 3mm (Mechanical Surface Detection)
- Electronics: DAE4 Sn662; Calibrated: 2023/3/8
- Phantom: SAM 1; Type: QD 000 P40 CB; Serial: TP/1378
- Postprocessing SW: SEMCAD, V1.8 Build 186

Area Scan (81x81x1): Measurement grid: dx=12mm, dy=12mm
Maximum value of SAR (interpolated) = 0.280 mW/g

Zoom Scan (7x7x7)/Cube 0: Measurement grid: dx=5mm, dy=5mm, dz=5mm
Reference Value = 7.31 V/m; Power Drift = -0.096 dB
Peak SAR (extrapolated) = 0.417 W/kg
SAR(1 g) = 0.198 mW/g; SAR(10 g) = 0.084 mW/g
Maximum value of SAR (measured) = 0.270 mW/g



0 dB = 0.270mW/g