

Technics®



EAH-A800

Digital Wireless Stereo Headphones
Basic Owner's Manual
Casque d'écoute stéréo sans fil numérique
Manuel d'utilisation Fonctions de base
Cascos auriculares estéreos inalámbricos digitales
Instrucciones básicas de funcionamiento

English
Français (Canada)
Español

English
Using the app "Technics Audio Connect"
By creating a Bluetooth® connection with a smartphone on which the "Technics Audio Connect" app (free of charge) is installed, you can enjoy a wide variety of functions, such as different customized settings and software updates for this unit.
* For further information, refer to "Owner's Manual (PDF format)".

English
Expressions used in this document
The product illustrations may differ from the actual product.
Français
Expressions utilisées dans ce document
Les illustrations du produit peuvent différer du produit réel.
Español
Expresiones utilizadas en este documento
Las ilustraciones del producto pueden diferir del producto real.

LDAC
Bluetooth®

Manufactured by:
Panasonic Corporation
Kadoma, Osaka, Japan
Authorized Representative in Europe:
Panasonic Marketing Europe GmbH
Panasonic Testing Centre
Windsberg 15, 22525 Hamburg, Germany

Panasonic Corporation of North America
5770 Ambler Drive, Mississauga, ON L4W 2T3
www.panasonic.com

Panasonic Corporation
http://www.panasonic.com

Printed in Malaysia/Imprimé en Malaisie/Impreso en Malasia
PNQW5918ZA
F0221MH0

Confidential until 2021/05/07

English
Thank you for purchasing this product.
Please read these instructions carefully before using this product, and save this manual for future use.

IMPORTANT SAFETY INSTRUCTIONS
Read these operating instructions carefully before using the unit. Follow the safety instructions on the unit and the applicable safety instructions listed below. Keep these operating instructions handy for future reference.
1 Do not use this apparatus near water.
2 Clean only with dry cloth.
3 Protect the power cord from being walked on or pinched particularly at plugs, convenience receptacles, and the point where they exit from the apparatus.
4 Unplug this apparatus during lightning storms or when unused for long periods of time.

Safety precautions
A lithium ion battery that is recyclable powers the product you have purchased. Please call 1-800-8-BATTERY for information on how to recycle this battery.
For US and Canada only
Pour les E.-U. et le Canada seulement.

THE FOLLOWING APPLIES ONLY IN THE U.S.A. AND CANADA.
This device complies with Part 15 of FCC Rules and Innovation, Science and Economic Development Canada's licence-exempt RSS(s). Operation is subject to the following two conditions:
(1) This device may not cause interference, and
(2) This device must accept any interference, including interference that may cause undesired operation.
Mode: EAH-A800
IC: 216A-EAH-A800

THE FOLLOWING APPLIES ONLY IN THE U.S.A. FCC Note:
This equipment has been tested and found to comply with the limits for a Class B digital device, pursuant to Part 15 of the FCC Rules. These limits are designed to provide reasonable protection against harmful interference in a residential installation. This equipment generates, uses, and can radiate radio frequency energy and, if not installed and used in accordance with the instructions, may cause harmful interference to radio communications.
However, there is no guarantee that interference will not occur in a particular installation. If this equipment does cause harmful interference to radio or television reception, which can be determined by turning the equipment off and on, the user is encouraged to try to correct the interference by one or more of the following measures:
• Reorient or relocate the receiving antenna.
• Increase the separation between the equipment and receiver.
• Connect the equipment into an outlet on a circuit different from that to which the receiver is connected.
• Consult the dealer or an experienced radio/TV technician for help.
FCC Caution:
Any unauthorized changes or modifications to this equipment would void the user's authority to operate this device.

THE FOLLOWING APPLIES ONLY IN CANADA.
CAN ICES-3(B)/NMB-3(B)
User memo:
DATE OF PURCHASE
DEALER NAME
DEALER ADDRESS
TELEPHONE NUMBER

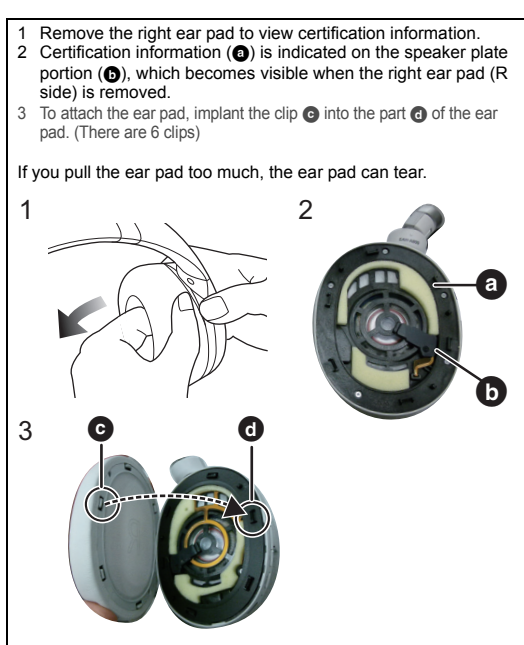
WARNING:
To reduce the risk of fire, electric shock or product damage.
Do not expose this unit to rain, moisture, dripping or splashing.
Do not repair this unit by yourself. Refer servicing to qualified service personnel.
Avoid the use in the following conditions:
• High or low extreme temperatures during use, storage or transportation.
• Disposal of a battery into fire or a hot oven, or mechanically crushing or cutting of a battery, that can result in an explosion.
• Extremely high temperature and/or extremely low air pressure that can result in an explosion or the leakage of flammable liquid or gas.

Register online at http://shop.panasonic.com/support
If you have any questions, visit:
In Canada:
http://shop.panasonic.com/support
In Europe:
www.panasonic.ca/english/support
Pour toute assistance supplémentaire, visitez:
www.panasonic.ca/french/support

For the United Kingdom and Ireland customers
Sales and Support Information
Customer Communications Centre
• For customers within the UK: 0333 222 8777
• For customers within Ireland: 01 447 5229
• Monday-Friday 9:00 am-5:00 pm (Excluding public holidays).
• For further support on your product, please visit our website: www.technics.com/uk/

This unit may receive radio interference caused by mobile telephones during use. If such interference occurs, please increase separation between this unit and the mobile telephone.
Use only the supplied USB charging cord when connecting to a computer.
This unit is intended for use in moderate and tropical climates.

For Thailand only
This telecommunication equipment conforms to NTN/NTC technical requirement.
For Singapore only
Complies with IMDA Standards DB1017



Declaration of Conformity (DoC)
Hereby, "Panasonic Corporation" declares that this product is in compliance with the essential requirements and other relevant provisions of Directive 2014/53/EU.
Customers can download a copy of the original DoC to our RE products from our DoC server:
http://www.ptc.panasonic.eu
Contact to Authorised Representative:
Panasonic Marketing Europe GmbH,
Panasonic Testing Centre, Windsberg 15, 22525 Hamburg, Germany
Type of wireless Frequency band Maximum power (dBm e.i.p.)
Bluetooth® 2402 - 2480 MHz 14 dBm

Only for European Union and countries with recycling systems
These symbols indicate separate collection of waste electrical and electronic equipment or waste batteries.
More detailed information is contained in "Owner's Manual (PDF format)".

The serial number of this product can be found on the left side of the headphones.
Remove the left ear pad to see it.
Please note them in the space provided below and keep for future reference.
MODEL NUMBER EAH-A800
SERIAL NUMBER

Accessories
Please check and identify the supplied accessories.
To order accessories, contact the dealer from whom you have made your purchase.
1 x Carrying case 1 x USB charging cord
1 x Detachable cord 1 x Airplane adaptor

Specifications table with columns: General, Power supply, Operating time, Charging temperature range, Operating temperature range, Operating humidity range, Mass (Weight), Bluetooth® section, Headphone section, Speaker section, Power handling capacity.

Allergies
Discontinue use if you experience discomfort with the ear pads or any other parts that directly contact your skin.
Continued use may cause rashes or other allergic reactions.
Precautions for listening with the Headphones
Excessive sound pressure from earphones and headphones can cause hearing loss.

The Bluetooth® word mark and logos are registered trademarks owned by Bluetooth SIG, Inc. and any use of such marks by Panasonic Corporation is under license.
Other trademarks and trade names are those of their respective owners.
SR is a trademark of Apple Inc., registered in the U.S. and other countries.
LDAC and LDAC logo are trademarks of Sony Corporation.
QR Code is a registered trademark of DENSO WAVE INCORPORATED.
Other system names and product names appearing in this document are in general the registered trademarks or trademarks of the respective developer companies.
Note that the TM mark and ® mark do not appear in this document.

For Thailand only
This telecommunication equipment conforms to NTN/NTC technical requirement.
For Singapore only
Complies with IMDA Standards DB1017

Français (Canada)
Nous vous remercions d'avoir arrêté votre choix sur cet appareil.
Avant d'utiliser l'appareil, il est recommandé de lire attentivement ce manuel d'utilisation et de le conserver pour consultation ultérieure.

IMPORTANTES MISES EN GARDE
Avant d'utiliser l'appareil, lire attentivement les instructions qui suivent. Se conformer tout particulièrement aux avertissements inscrits sur l'appareil et aux consignes de sécurité indiquées ci-dessous. Conserver le présent manuel pour consultation ultérieure.
1 Ne pas utiliser cet appareil près d'une source d'eau.
2 Nettoyer uniquement avec un chiffon sec.
3 S'assurer que le cordon est placé dans un endroit où il ne risque pas d'être écrasé, piétiné ou coincé. Faire particulièrement attention à ses extrémités de branchement, y compris sa fiche.
4 Débrancher cet appareil lors d'un orage ou en cas de non-utilisation prolongée.

Précautions de sécurité
L'appareil que vous vous êtes procuré est alimenté par une batterie au lithium-ion. Pour des renseignements sur le recyclage de la batterie, veuillez composer le 1-800-8-BATTERY.
For US and Canada only
Pour les E.-U. et le Canada seulement.

CE QUI SUIT NE S'APPLIQUE QU'ÀUX ÉTATS-UNIS ET AU CANADA.
Le présent appareil est conforme à la partie 15 des règles de la FCC et aux CNR d'Innovation, Sciences et Développement économique Canada applicables aux appareils radio exempts de licence. L'exploitation est autorisée aux deux conditions suivantes:
(1) l'appareil ne doit pas produire de brouillage, et
(2) l'appareil doit accepter tout brouillage radioélectrique subi, même si le brouillage est susceptible d'en compromettre le fonctionnement.
Mode: EAH-A800
IC: 216A-EAH-A800

Cet équipement est conforme aux limites d'exposition aux rayonnements énoncées pour un environnement non contrôlé et respecte les règles d'exposition radioélectriques (RF) de la FCC et les lignes directrices d'exposition aux fréquences radioélectriques (RF) CNR-102 de l'ISDE, puisque cet appareil émet une énergie RF très faible.

CE QUI SUIT NE S'APPLIQUE QU'AU CANADA.
CAN ICES-3(B)/NMB-3(B)

Attention:
Pour réduire les risques d'incendie, de choc électrique ou de dommages à l'appareil,
Ne pas exposer cet appareil à la pluie, à l'humidité, aux gouttes ou aux éclaboussures.
Ne pas réparer cet appareil par soi-même. Référer la réparation à un personnel de service qualifié.
Éviter les conditions suivantes:
• Températures extrêmement basses ou élevées durant l'utilisation, le stockage ou le transport.
• Mise au rebut d'une batterie dans le feu ou dans un four chaud, ou écrasement ou coupure mécanique d'une batterie, pouvant entraîner une explosion.
• Température extrêmement élevée et/ou pression de l'air extrêmement basse pouvant entraîner une explosion ou une fuite de liquide ou de gaz inflammable.

Do not place this unit near a heat source.
Do not use this unit near a hot oven, or mechanically crushing or cutting of a battery, that can result in an explosion.
Extremely high temperature and/or extremely low air pressure that can result in an explosion or the leakage of flammable liquid or gas.
Allergies
Discontinue use if you experience discomfort with the ear pads or any other parts that directly contact your skin.
Continued use may cause rashes or other allergic reactions.
Precautions for listening with the Headphones
Excessive sound pressure from earphones and headphones can cause hearing loss.

Utiliser uniquement le cordon de charge USB fourni lors de la connexion à un ordinateur.
Cet appareil est conçu pour une utilisation en climat modéré et tropical.

ETL
Conforms to UL STD 62368-1
Certified to CAN/CSA STD C22.2 No.62368-1
Intertek
4004466
Conforme à la norme CAN/CSA C22.2 No.62368-1

UL Energy Verified

Español
Le agradecemos haber adquirido este producto.
Le cuidadosamente estas instrucciones antes de usar este producto, y guarde este manual para usarlo en el futuro.

INSTRUCCIONES DE SEGURIDAD IMPORTANTES
Lea atentamente estas instrucciones de funcionamiento antes de usar la unidad. Siga las instrucciones de seguridad en la unidad y las instrucciones de seguridad aplicables que se mencionan abajo. Guarde a mano estas instrucciones de funcionamiento para consultarlas en el futuro.
1 No use este aparato cerca del agua.
2 Limpie únicamente con un paño seco.
3 Proteja el cable para que no lo pisen o lo doblen particularmente en los enchufes, tomas de corriente y el punto donde sale del aparato.
4 Desenchufe este aparato durante tormentas eléctricas o cuando no se usa durante largos periodos de tiempo.

Precauciones de seguridad
Una batería de litio reciclable alimenta el producto que ha comprado. Llame al número 1-800-8-BATTERY para más información sobre cómo reciclar esta batería.
Para Estados Unidos y CANADÁ
Este dispositivo cumple con la(s) norma(s) para dispositivos electrónicos de licencia RSS de Industry Canada. El funcionamiento está sujeto a las dos siguientes condiciones:
(1) este dispositivo no puede producir interferencias y
(2) este dispositivo debe aceptar cualquier interferencia, incluyendo aquellas que puedan ocasionar un funcionamiento no deseado del mismo.

LOS SIGUIENTES PUNTOS SOLO SON APLICABLES A LOS EE.UU.
Nota FCC:
Este equipo cumple los límites de exposición a la radiación de la FCCIC establecidos para un entorno no controlado, así como las directrices de exposición a radio frecuencia (RF) de la FCC y la RSS-102 de las reglas de exposición a radio frecuencia (RF) de la IC.
Este equipo presenta niveles muy bajos de energía RF que se estima cumplen sin necesidad de comprobar la relación específica de absorción (SAR).

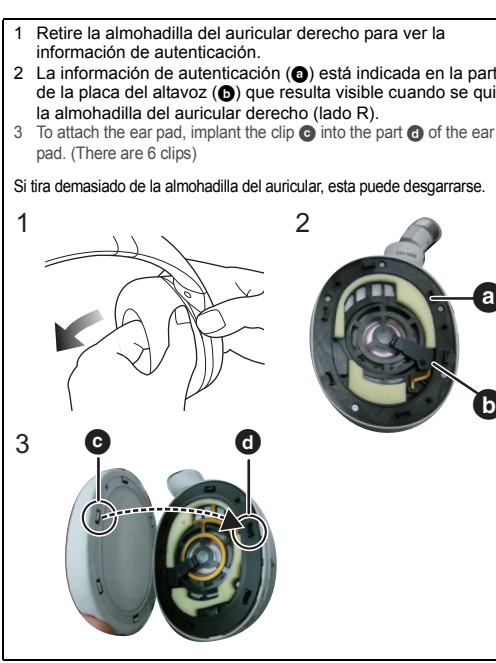
Verifique e identifique los accesorios suministrados.
Para pedir accesorios, póngase en contacto con el distribuidor al que haya realizado la compra.
1 x Estuche de transporte 1 x Cable de carga USB
1 x Cable desmontable 1 x Adaptador para avión

Specifications table with columns: General, Suministro de energía, Tiempo de funcionamiento, Tiempo de carga, Intervalo de temperatura de carga, Rango de temperatura de operación, Masa, Sección Bluetooth®, Banda de frecuencia, Archivos admitidos, Código admitido, Sección de auriculares, Impedancia, Capacidad de gestión de potencia, Capacidad de gestión de potencia, Sección del altavoz.

AVISO:
Para reducir el riesgo de incendio, descarga eléctrica o daño del producto:
No exponga esta unidad a la lluvia, humedad, goteo ni a salpicaduras.
No repare este aparato usted mismo. Solicite cualquier reparación a personal técnico cualificado.
Evite el uso en las siguientes condiciones:
• Temperaturas extremadamente altas o bajas durante el uso, almacenamiento o transporte.
• Eliminación de una batería en el fuego o en un horno caliente, o aplastándola o cortándola mecánicamente, lo que podría provocar una explosión.
• Temperatura extremadamente alta o presión del aire extremadamente baja que puede provocar una explosión o la fuga de líquido o gas inflamable.

Do not place this unit near a heat source.
Do not use this apparatus in a hot oven or in places where the temperature is high.
Do not repair this unit by yourself. Refer servicing to qualified service personnel.
Avoid the use in the following conditions:
• High or low extreme temperatures during use, storage or transportation.
• Disposal of a battery into fire or a hot oven, or mechanically crushing or cutting of a battery, that can result in an explosion.
• Extremely high temperature and/or extremely low air pressure that can result in an explosion or the leakage of flammable liquid or gas.

Este aparato podría recibir interferencias de radio durante el uso causadas por teléfonos móviles. Si se producen dichas interferencias, aumente la separación entre este aparato y el teléfono móvil.
Cuando conecte a un ordenador, utilice únicamente el cable de carga USB suministrado.
Este estado se diseñó para ser utilizado en climas moderados y tropicales.



Declaration of Conformity (DoC)
Por la presente, "Panasonic Corporation" declara que este producto es de conformidad con los requisitos sustantivos y con las disposiciones pertinentes de la Directiva 2014/53/UE.
Los usuarios pueden descargar una copia de la declaración de conformidad original (DoC) de los productos RE del servidor DoC:
http://www.ptc.panasonic.eu
Contacto con el representante autorizado:
Panasonic Marketing Europe GmbH,
Panasonic Testing Centre, Windsberg 15, 22525 Hamburg, Alemania
Type of wireless Frequency band Maximum power (dBm p.l.i.e.)
Bluetooth® 2402 - 2480 MHz 14 dBm

Only for European Union and countries with recycling systems
These symbols indicate separate collection of waste electrical and electronic equipment or waste batteries.
More detailed information is contained in "Owner's Manual (PDF format)".

The serial number of this product can be found on the left side of the headphones.
Remove the left ear pad to see it.
Please note them in the space provided below and keep for future reference.
MODEL NUMBER EAH-A800
SERIAL NUMBER

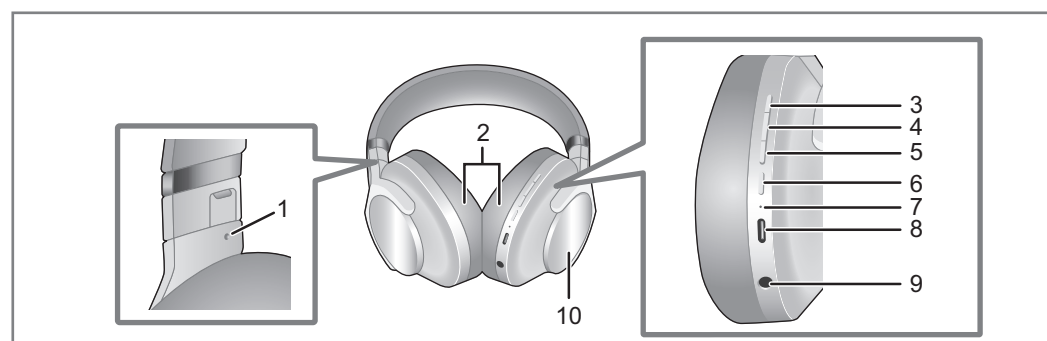
Accessories
Please check and identify the supplied accessories.
To order accessories, contact the dealer from whom you have made your purchase.
1 x Carrying case 1 x Cable de carga USB
1 x Cable desmontable 1 x Adaptador para avión

Specifications table with columns: General, Suministro de energía, Tiempo de funcionamiento, Tiempo de carga, Intervalo de temperatura de carga, Rango de temperatura de operación, Masa, Sección Bluetooth®, Banda de frecuencia, Archivos admitidos, Código admitido, Sección de auriculares, Impedancia, Capacidad de gestión de potencia, Capacidad de gestión de potencia, Sección del altavoz.

AVISO:
Para reducir el riesgo de incendio, descarga eléctrica o daño del producto:
No exponga esta unidad a la lluvia, humedad, goteo ni a salpicaduras.
No repare este aparato usted mismo. Solicite cualquier reparación a personal técnico cualificado.
Evite el uso en las siguientes condiciones:
• Temperaturas extremadamente altas o bajas durante el uso, almacenamiento o transporte.
• Eliminación de una batería en el fuego o en un horno caliente, o aplastándola o cortándola mecánicamente, lo que podría provocar una explosión.
• Temperatura extremadamente alta o presión del aire extremadamente baja que puede provocar una explosión o la fuga de líquido o gas inflamable.

Do not place this unit near a heat source.
Do not use this apparatus in a hot oven or in places where the temperature is high.
Do not repair this unit by yourself. Refer servicing to qualified service personnel.
Avoid the use in the following conditions:
• High or low extreme temperatures during use, storage or transportation.
• Disposal of a battery into fire or a hot oven, or mechanically crushing or cutting of a battery, that can result in an explosion.
• Extremely high temperature and/or extremely low air pressure that can result in an explosion or the leakage of flammable liquid or gas.

Este aparato podría recibir interferencias de radio durante el uso causadas por teléfonos móviles. Si se producen dichas interferencias, aumente la separación entre este aparato y el teléfono móvil.
Cuando conecte a un ordenador, utilice únicamente el cable de carga USB suministrado.
Este estado se diseñó para ser utilizado en climas moderados y tropicales.



Part names

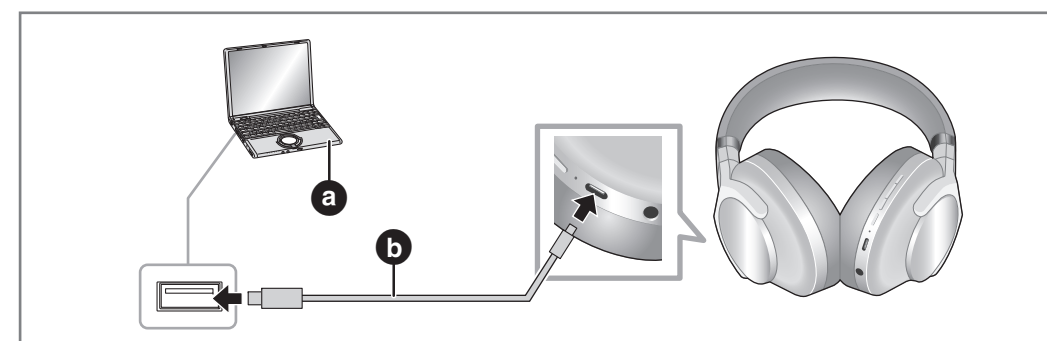
- | | |
|---------------------------------------|-----------------------------|
| 1 Raised dot indicating the left side | 7 Power/pairing LED |
| 2 Ear pads | 8 Charging terminal (DC IN) |
| 3 [+] button | 9 Audio input terminal |
| 4 Multi function button | 10 Touch sensor |
| 5 [-] button | |
| 6 [Ⓞ] button | |

Part names

- | | |
|---------------------------------------|-----------------------------|
| 1 Raised dot indicating the left side | 7 Power/pairing LED |
| 2 Ear pads | 8 Charging terminal (DC IN) |
| 3 [+] button | 9 Audio input terminal |
| 4 Multi function button | 10 Touch sensor |
| 5 [-] button | |
| 6 [Ⓞ] button | |

Part names

- | | |
|---------------------------------------|-----------------------------|
| 1 Raised dot indicating the left side | 7 Power/pairing LED |
| 2 Ear pads | 8 Charging terminal (DC IN) |
| 3 [+] button | 9 Audio input terminal |
| 4 Multi function button | 10 Touch sensor |
| 5 [-] button | |
| 6 [Ⓞ] button | |



1 Charging

The rechargeable battery (installed in the unit) is not charged initially. Charge the battery before using the unit.

- Use the **USB charging cord (supplied)** (a) to connect this unit to a **5.0 V power source (500 mA or higher)** (b).
 - The power/pairing LED (c) lights in red when charging is in progress. When charging is completed, the power/pairing LED will go out.

1 Charging

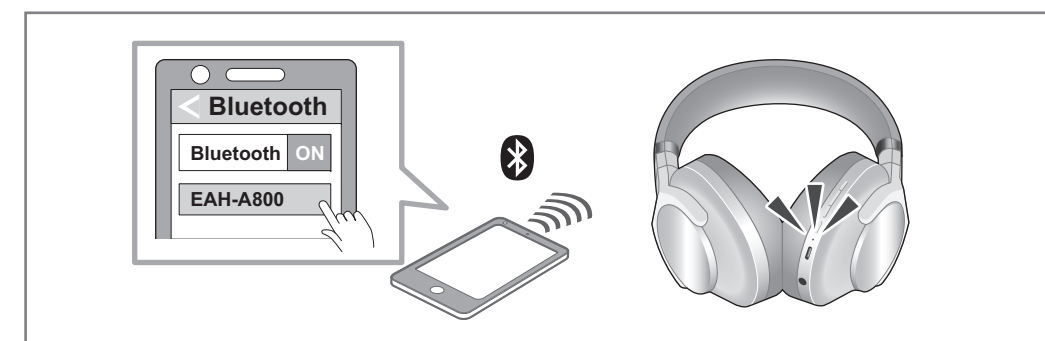
The rechargeable battery (installed in the unit) is not charged initially. Charge the battery before using the unit.

- Use the **USB charging cord (supplied)** (a) to connect this unit to a **5.0 V power source (500 mA or higher)** (b).
 - The power/pairing LED (c) lights in red when charging is in progress. When charging is completed, the power/pairing LED will go out.

1 Charging

The rechargeable battery (installed in the unit) is not charged initially. Charge the battery before using the unit.

- Use the **USB charging cord (supplied)** (a) to connect this unit to a **5.0 V power source (500 mA or higher)** (b).
 - The power/pairing LED (c) lights in red when charging is in progress. When charging is completed, the power/pairing LED will go out.



2 Pairing

Connecting by pairing (registering) your headphone with a Bluetooth® device

- Using the **"Technics Audio Connect" app (free of charge)** makes connecting with Bluetooth® simple.

- In the **power-off state**, press and hold [Ⓞ] button until the power/pairing LED blinks.
 - The power/pairing LED will light alternately in blue and red.
- Turn on the **Bluetooth® device** and enable the **Bluetooth® function**.
- From the **Bluetooth® menu of the Bluetooth® device**, select device name **"EAH-A800"**.
- Confirm that the **earphones and the Bluetooth® device** are connected.

2 Pairing

Connecting by pairing (registering) your headphone with a Bluetooth® device

- Using the **"Technics Audio Connect" app (free of charge)** makes connecting with Bluetooth® simple.

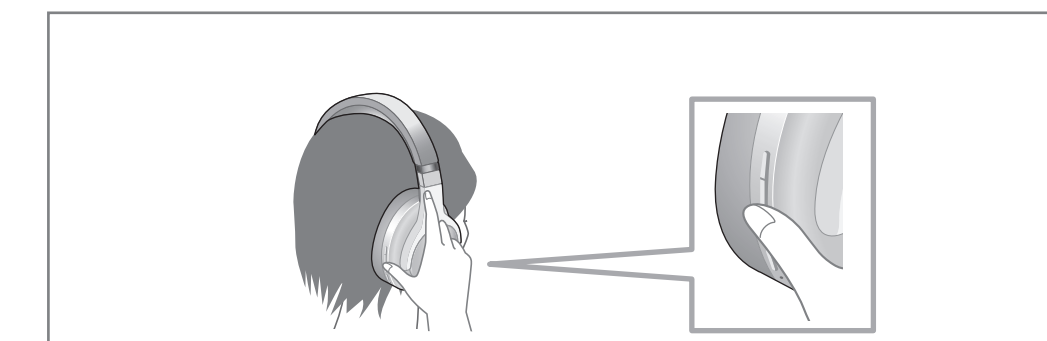
- In the **power-off state**, press and hold [Ⓞ] button until the power/pairing LED blinks.
 - The power/pairing LED will light alternately in blue and red.
- Turn on the **Bluetooth® device** and enable the **Bluetooth® function**.
- From the **Bluetooth® menu of the Bluetooth® device**, select device name **"EAH-A800"**.
- Confirm that the **earphones and the Bluetooth® device** are connected.

2 Pairing

Connecting by pairing (registering) your headphone with a Bluetooth® device

- Using the **"Technics Audio Connect" app (free of charge)** makes connecting with Bluetooth® simple.

- In the **power-off state**, press and hold [Ⓞ] button until the power/pairing LED blinks.
 - The power/pairing LED will light alternately in blue and red.
- Turn on the **Bluetooth® device** and enable the **Bluetooth® function**.
- From the **Bluetooth® menu of the Bluetooth® device**, select device name **"EAH-A800"**.
- Confirm that the **earphones and the Bluetooth® device** are connected.



3 Operating with the multi function button

Operation	
Press multi function button	▶/
Press multi function button twice quickly	▶▶
Press multi function button three times quickly	◀◀
Press and hold multi function button for approximately 2 seconds	Start the voice assistant

Operation	
Press multi function button	Receive phone call
Press multi function button twice quickly	Mute the voice of the call
Press and hold multi function button for approximately 2 seconds	Reject a phone call End a phone call

3 Operating with the multi function button

Operation	
Press multi function button	▶/
Press multi function button twice quickly	▶▶
Press multi function button three times quickly	◀◀
Press and hold multi function button for approximately 2 seconds	Start the voice assistant

Operation	
Press multi function button	Receive phone call
Press multi function button twice quickly	Mute the voice of the call
Press and hold multi function button for approximately 2 seconds	Reject a phone call End a phone call

3 Operating with the multi function button

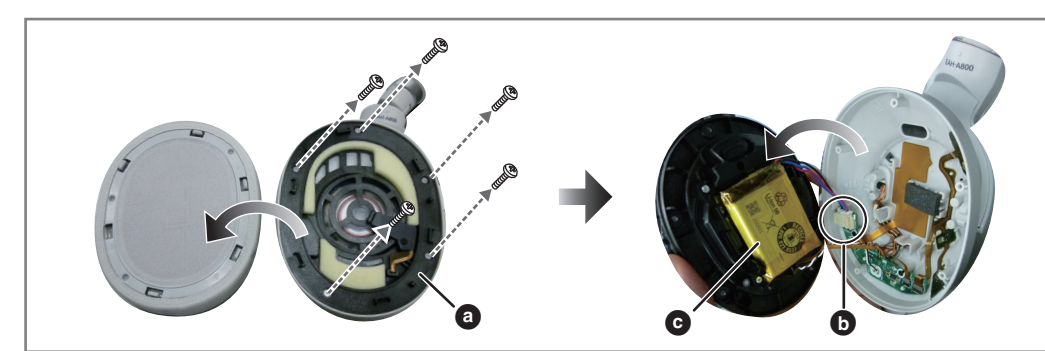
Operation	
Press multi function button	▶/
Press multi function button twice quickly	▶▶
Press multi function button three times quickly	◀◀
Press and hold multi function button for approximately 2 seconds	Start the voice assistant

Operation	
Press multi function button	Receive phone call
Press multi function button twice quickly	Mute the voice of the call
Press and hold multi function button for approximately 2 seconds	Reject a phone call End a phone call

English
More detailed operating instructions are available in "Owner's Manual (PDF format)". To read it, download it from the website.
• Click the desired language.

Français (Canada)
Des instructions plus détaillées sont disponibles dans le "Mode d'emploi (format PDF)". Pour en prendre connaissance, téléchargez-le depuis le site Web.
• Cliquez sur la langue désirée.

Español
Puede encontrar instrucciones de funcionamiento más detalladas en las "instrucciones de funcionamiento (formato PDF)".
Para leerlas, descárguelas del sitio web.
• Haga clic en el idioma deseado.
<https://www.technics.com/support/downloads/ol/EAH-A800.html>



Useful information (Only for Latin American countries)

Customer Service

Customer Service Directory

Obtain products information and operative assistant; localize the closer distributor or Service Center; buy spare parts and accessories by our Web Site to Latin America or calling our Contact Center:

COUNTRY	WEB SITE	CONTACT CENTER
Panama	www.panasonic.com/pa/soporte/	800-7262
Colombia	www.panasonic.com/co/soporte/	01-8000-947262
Ecuador	www.panasonic.com/pa/soporte/	1-800-726276
Costa Rica	www.panasonic.com/pa/soporte/	800-7262737
El Salvador	www.panasonic.com/pa/soporte/	800-7262
Guatemala	www.panasonic.com/pa/soporte/	1-801-811-7262
Uruguay	www.panasonic.com/pa/soporte/	0-800-7262
Paraguay	www.panasonic.com/pa/soporte/	0-800-11-7262
Chile	www.panasonic.com/cl/soporte/	800-390-602 022-797-5000
Peru	www.panasonic.com/pa/soporte/	0800-00726
Venezuela	www.panasonic.com/pa/soporte/	800-7262-800
Mexico	www.panasonic.com/mx/soporte/	01800-847-7262 55-5000-1200
Argentina	www.panasonic.com/ar/soporte/	0800-333-7262 0810-321-7262
Dominican Rep.	www.panasonic.com/pa/soporte/	809-200-8000

For Caribbean countries that speak English please enter this web site in order to find information of our products and operative assistant:
www.panasonic.com/caribbean

For Australia

Panasonic Australia Pty. Ltd. 1 Innovation Road, Macquarie Park NSW 2113
Provides a 12 month parts & labour warranty on this product for manufacturing defects from date of purchase. In addition to your rights under this warranty, Panasonic products come with consumer guarantees that cannot be excluded under the Australian Consumer Law. If there is a major failure with the product, you can reject the product and elect to have a refund or to have the product replaced or if you wish you may elect to keep the goods and be compensated for the drop in value of the goods. You are also entitled to have the product repaired or replaced if the product fails to be of acceptable quality and the failure does not amount to a major failure.
For full details or to claim warranty please contact Panasonic Customer Care on 132 600 or visit www.panasonic.com.au

PRO-031-F10 Issue 2.0 August 2016

Restoring to the factory settings

Charge the battery before restoring the unit.

- In the **power-off state**, press and hold [Ⓞ] button until the power/pairing LED blinks.
 - The power/pairing LED will light alternately in blue and red.
 - While the power/pairing LED is lighting alternately in blue and red, press and hold [Ⓞ] button and [-] at the same time for at least 5 seconds.
 - The default settings will be restored after the power/pairing LED (blue) blinks fast and the unit turns off.
 - The default settings will be restored after the power/pairing LED (blue) blinks fast and the unit turns off.
- When pairing a device again, delete the registering information (Device: "EAH-A800") from the Bluetooth® device's menu, and register this unit with the Bluetooth® device again.

Restoring to the factory settings

Charge the battery before restoring the unit.

- In the **power-off state**, press and hold [Ⓞ] button until the power/pairing LED blinks.
 - The power/pairing LED will light alternately in blue and red.
 - While the power/pairing LED is lighting alternately in blue and red, press and hold [Ⓞ] button and [-] at the same time for at least 5 seconds.
 - The default settings will be restored after the power/pairing LED (blue) blinks fast and the unit turns off.
 - The default settings will be restored after the power/pairing LED (blue) blinks fast and the unit turns off.
- When pairing a device again, delete the registering information (Device: "EAH-A800") from the Bluetooth® device's menu, and register this unit with the Bluetooth® device again.

Restoring to the factory settings

Charge the battery before restoring the unit.

- In the **power-off state**, press and hold [Ⓞ] button until the power/pairing LED blinks.
 - The power/pairing LED will light alternately in blue and red.
 - While the power/pairing LED is lighting alternately in blue and red, press and hold [Ⓞ] button and [-] at the same time for at least 5 seconds.
 - The default settings will be restored after the power/pairing LED (blue) blinks fast and the unit turns off.
 - The default settings will be restored after the power/pairing LED (blue) blinks fast and the unit turns off.
- When pairing a device again, delete the registering information (Device: "EAH-A800") from the Bluetooth® device's menu, and register this unit with the Bluetooth® device again.

Troubleshooting

Before requesting service, make the following checks. If you are in doubt about some of the check points, or if the remedies indicated do not solve the problem, consult your dealer for instructions.

- Does not connect with the Bluetooth® device.**
- Delete the registration information for this unit from the Bluetooth® menu, etc., of the Bluetooth® device, then pair again.
- Cannot charge the unit.**
- Make sure to charge in a room temperature between 10 °C and 35 °C.
 - Is the USB port you are currently using working properly? If your computer has other USB ports, unplug the connector from its current port and plug it into one of the other ports.
 - If the measures mentioned above are not applicable, unplug the USB charging cord and plug it in again.
 - If the charge time and operating time become shortened, the battery may have run down. (Number of charging times of the installed battery: Approximately 300)
 - Is the USB charging cord connected firmly to the USB terminal of the computer?

Troubleshooting

Before requesting service, make the following checks. If you are in doubt about some of the check points, or if the remedies indicated do not solve the problem, consult your dealer for instructions.

- Does not connect with the Bluetooth® device.**
- Delete the registration information for this unit from the Bluetooth® menu, etc., of the Bluetooth® device, then pair again.
- Cannot charge the unit.**
- Make sure to charge in a room temperature between 10 °C and 35 °C.
 - Is the USB port you are currently using working properly? If your computer has other USB ports, unplug the connector from its current port and plug it into one of the other ports.
 - If the measures mentioned above are not applicable, unplug the USB charging cord and plug it in again.
 - If the charge time and operating time become shortened, the battery may have run down. (Number of charging times of the installed battery: Approximately 300)
 - Is the USB charging cord connected firmly to the USB terminal of the computer?

Troubleshooting

Before requesting service, make the following checks. If you are in doubt about some of the check points, or if the remedies indicated do not solve the problem, consult your dealer for instructions.

- Does not connect with the Bluetooth® device.**
- Delete the registration information for this unit from the Bluetooth® menu, etc., of the Bluetooth® device, then pair again.
- Cannot charge the unit.**
- Make sure to charge in a room temperature between 10 °C and 35 °C.
 - Is the USB port you are currently using working properly? If your computer has other USB ports, unplug the connector from its current port and plug it into one of the other ports.
 - If the measures mentioned above are not applicable, unplug the USB charging cord and plug it in again.
 - If the charge time and operating time become shortened, the battery may have run down. (Number of charging times of the installed battery: Approximately 300)
 - Is the USB charging cord connected firmly to the USB terminal of the computer?

To remove the battery when disposing of this unit

The following instructions are not intended for repairing purposes but for the disposal of this unit. This unit is not restorable once disassembled.

- When disposing of this unit, take out the battery installed in this unit and recycle it.
- Remove the left ear pad.
 - Peel off the protecting sheet and remove the 5 screws.
 - Remove the part (a) in step 2.
 - Disconnect the connector (b), and peel off the tape fixing the battery in place, remove the battery (c).

To remove the battery when disposing of this unit

The following instructions are not intended for repairing purposes but for the disposal of this unit. This unit is not restorable once disassembled.

- When disposing of this unit, take out the battery installed in this unit and recycle it.
- Remove the left ear pad.
 - Peel off the protecting sheet and remove the 5 screws.
 - Remove the part (a) in step 2.
 - Disconnect the connector (b), and peel off the tape fixing the battery in place, remove the battery (c).

To remove the battery when disposing of this unit

The following instructions are not intended for repairing purposes but for the disposal of this unit. This unit is not restorable once disassembled.

- When disposing of this unit, take out the battery installed in this unit and recycle it.
- Remove the left ear pad.
 - Peel off the protecting sheet and remove the 5 screws.
 - Remove the part (a) in step 2.
 - Disconnect the connector (b), and peel off the tape fixing the battery in place, remove the battery (c).