

EXHIBIT 9

INTERNAL PHOTOGRAPHS

(Pursuant to FCC Part 2.1033(b)(7), 2.1033(c)(12) and RSP 100 Sec 8.3)

The following photographs are attached.

Exhibit

- | | |
|---|----|
| 1. Internal Front View - Modem Module | 9A |
| 2. Internal Front View - Modem Module Top View, Cover and Shields Removed | 9B |
| 3. Internal Front View - Modem Module Bottom View, Heat Sink and Shields Removed | 9C |
| 4. Internal Front View – Power Amplifier Module | 9D |
| 5. Internal Front View – Power Amplifier Module Top View, Cover and Shields Removed | 9E |
| 6. Internal Front View – Power Amplifier Module Bottom View, Heat Sink Removed | 9F |
| 7. Internal Front View – Power Supply Module | 9G |
| 8. Internal Front View – Wireline Board Top View | 9H |
| 9. Internal Front View – Wireline Board Bottom View | 9I |
| 10. SLR 8000 Assembly Exploded View | 9J |

Exhibit 9A – Internal Front View— Modem Module



Exhibit 9B – Internal Front View – Modem Module Top View, Cover and Shields Removed

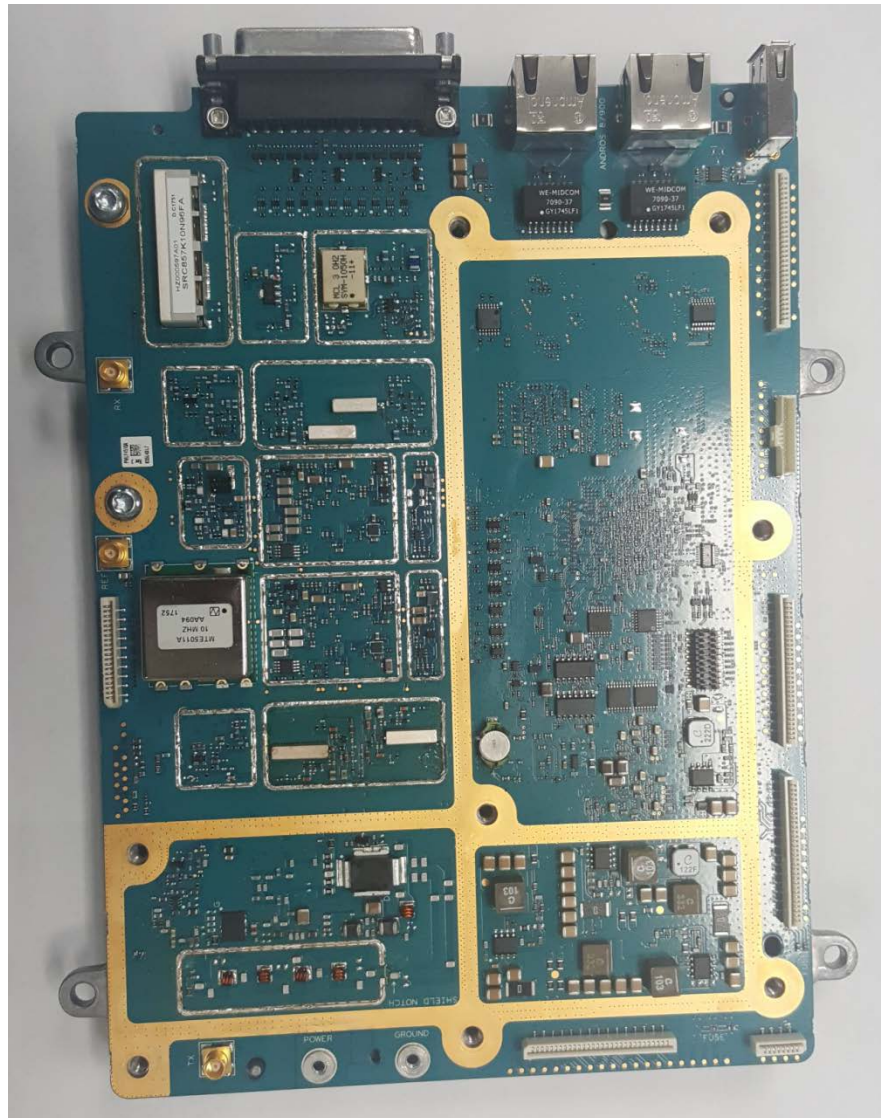


Exhibit 9C – Internal Front View – Modem Module Bottom View, Heat Sink and Shields Removed

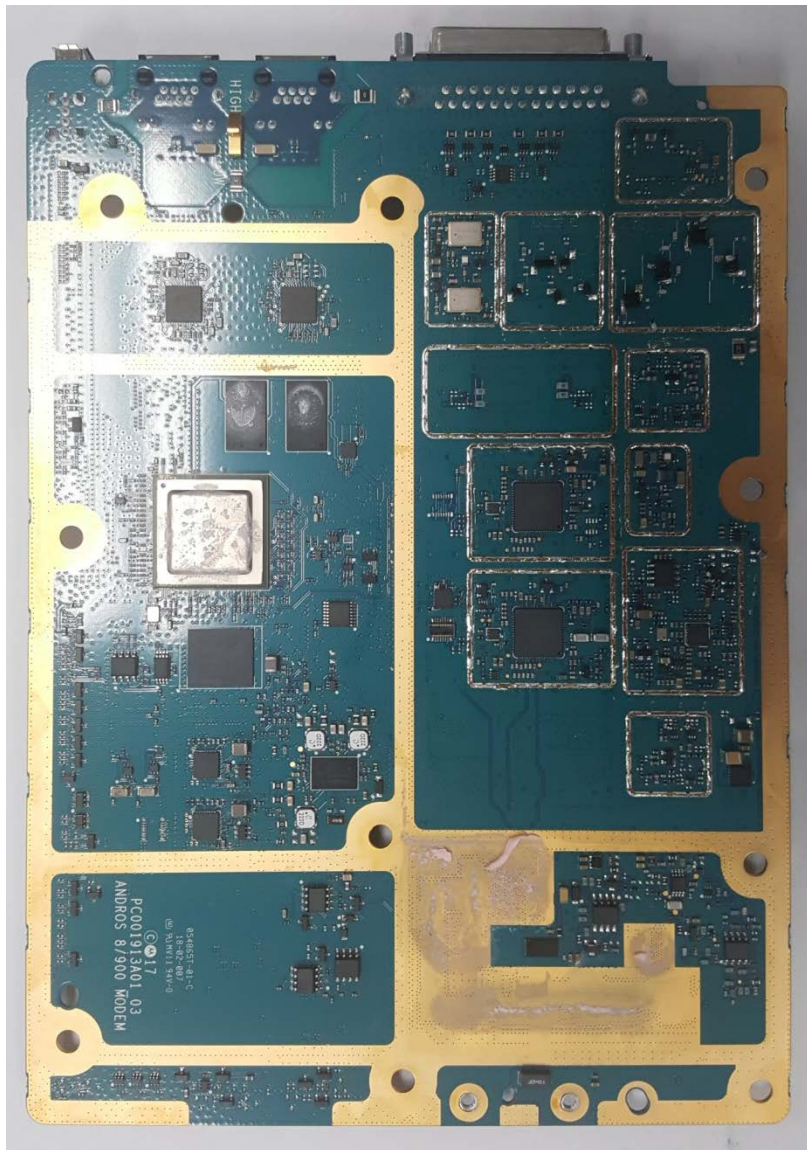


Exhibit 9D – Internal Front View – Power Amplifier Module



Exhibit 9E – Internal Front View – Power Amplifier Module Top View, Cover and Shields Removed

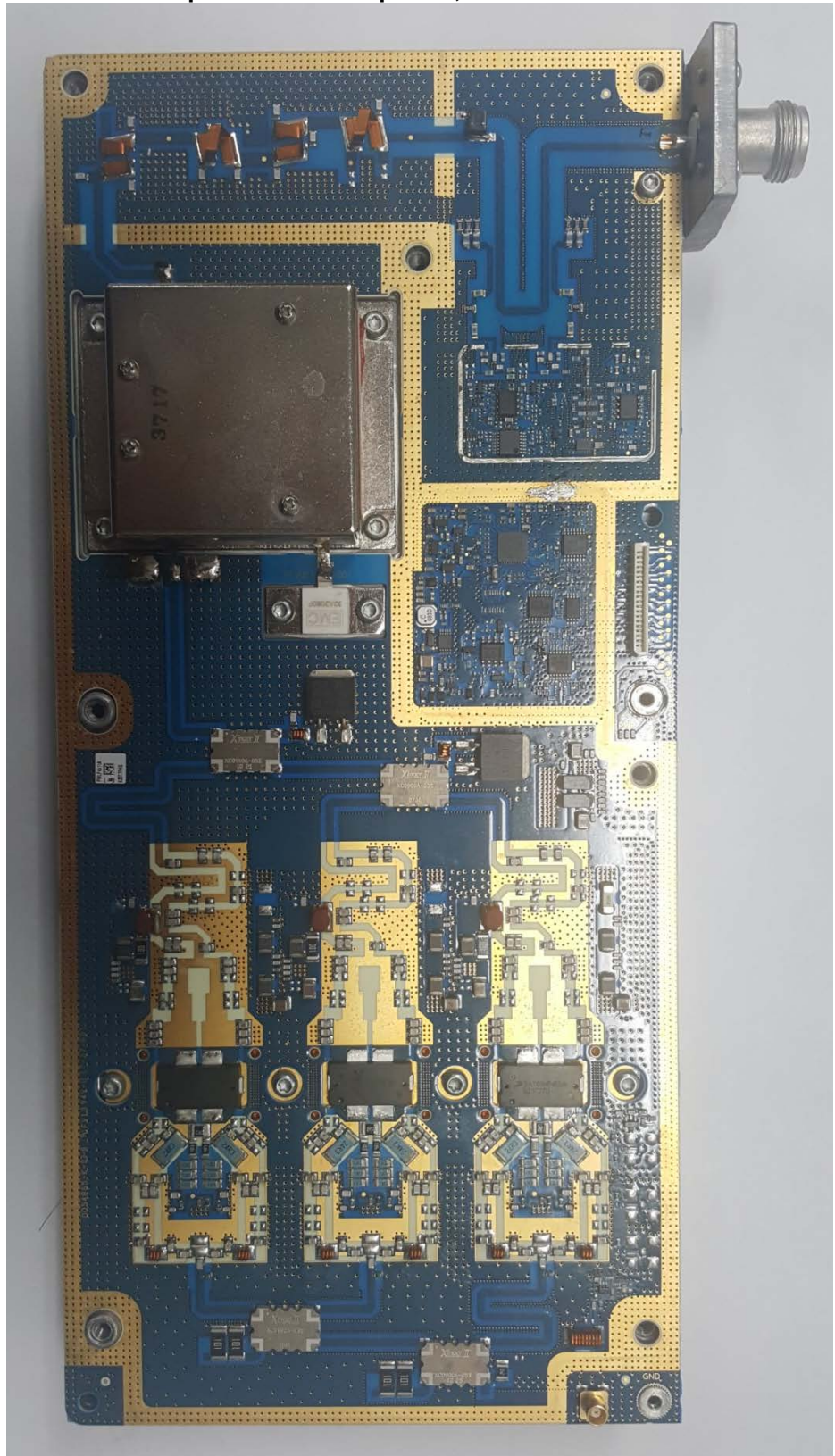


Exhibit 9F – Internal Front View – Power Amplifier Module Bottom View, Heat Sink Removed

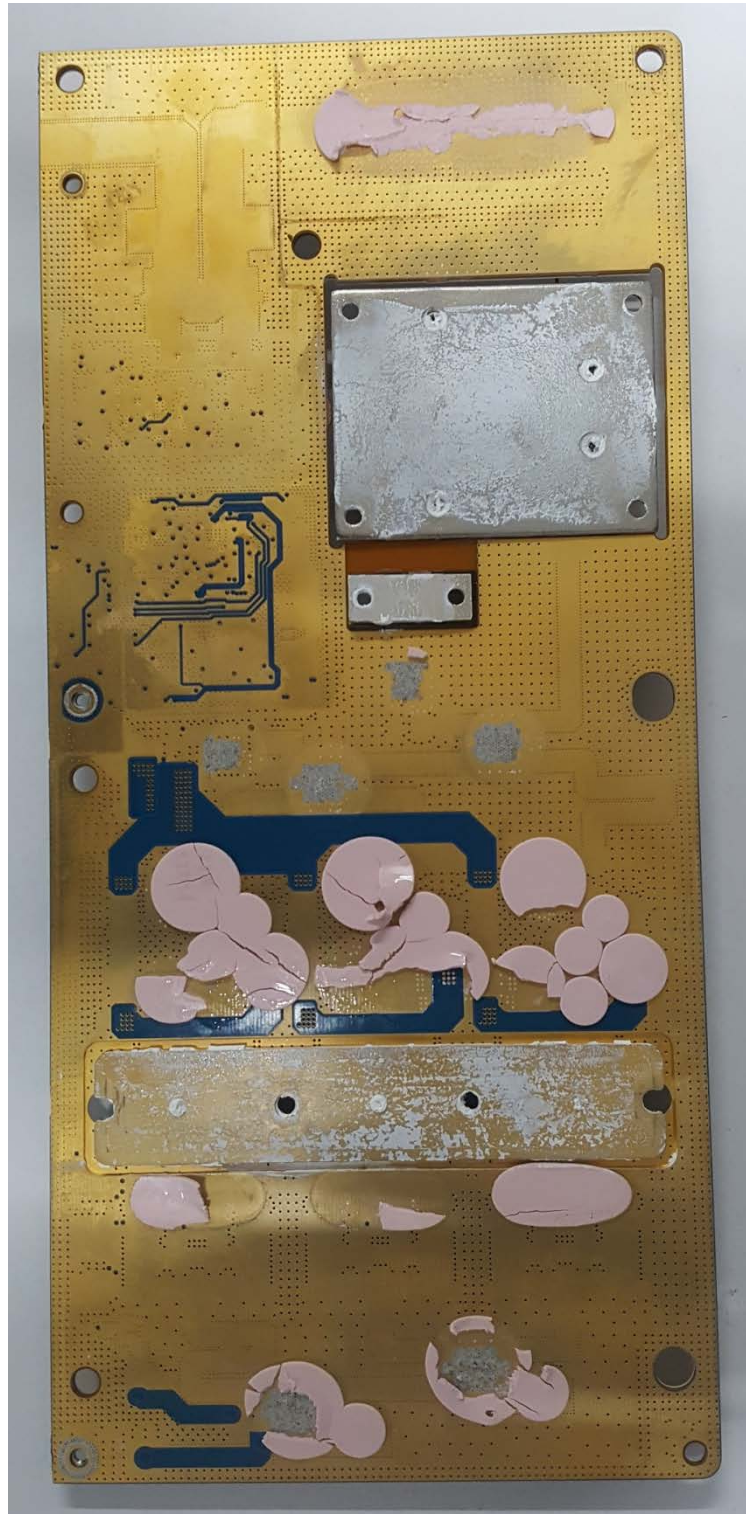


Exhibit 9G – Internal Front View – Power Supply Module



Exhibit 9H – Internal Front View – Wireline Board Top View

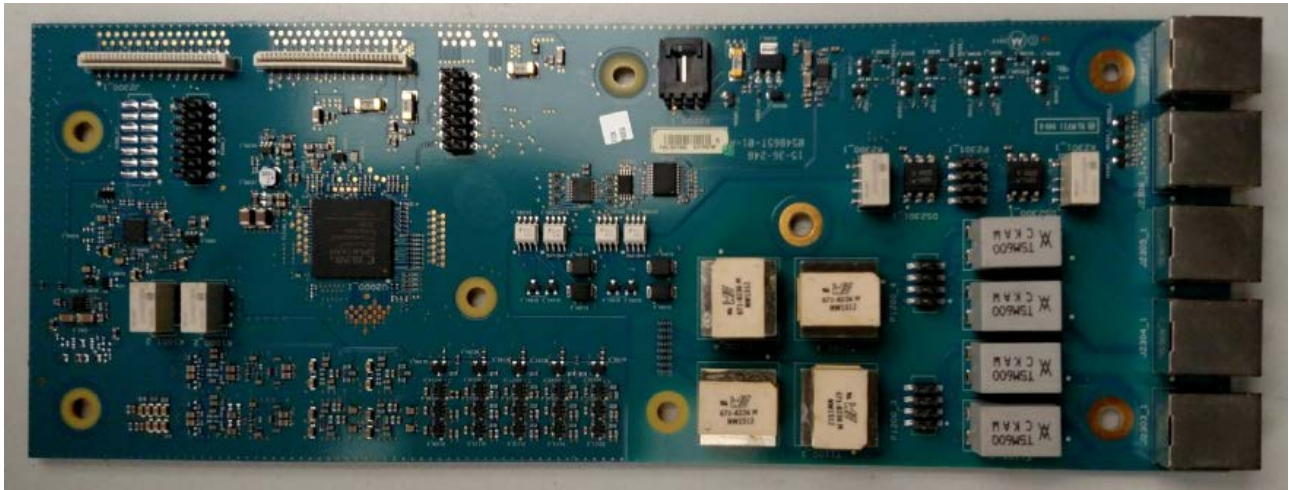


Exhibit 9I – Internal Front View – Wireline Board Bottom View

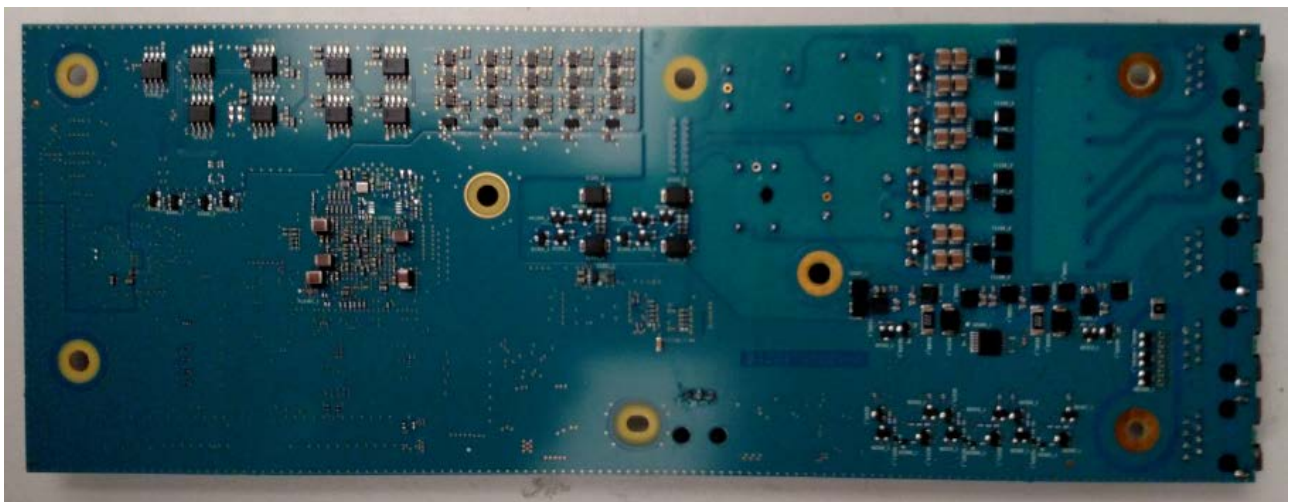


Exhibit 9J – SLR 8000 Assembly Exploded View

