

**EXHIBIT 9****Internal Photographs**

(Pursuant to FCC Part 2.1033(b)(7), 2.1033(c)(12) and RSP 100 Annex C)

The following photographs are attached.

**Exhibit**

- |     |   |    |
|-----|---|----|
| 1.  | RF board <u>with</u> Shields (Top)                            | 9A |
| 2.  | RF board <u>without</u> Shields (Top)                         | 9B |
| 3.  | RF board <u>with</u> Shields (Bottom)                         | 9C |
| 4.  | RF board <u>without</u> Shields (Bottom)                      | 9D |
| 5.  | RF boards <u>with</u> chassis and control head (Top), Model 1 | 9E |
| 6.  | Chassis and control head (Bottom), Model 1                    | 9F |
| 7.  | RF boards <u>with</u> chassis and control head (Top), Model 2 | 9G |
| 8.  | Chassis and control head (Bottom), Model 2                    | 9H |
| 9.  | RF boards <u>with</u> chassis and control head (Top), Model 3 | 9I |
| 10. | Chassis and control head (Bottom), Model 3                    | 9J |
| 11. | GOB Board (Top)   | 9K |
| 12. | GOB Board with Shield (Bottom)                                | 9L |
| 13. | GOB Board without Shield (Bottom)                             | 9M |
| 14. | Exploded view of radio  | 9N |
| 15. | Exploded view of alphanumeric display control head            | 9O |
| 16. | Exploded view of numeric display control head                 | 9P |

Exhibit 9A - RF board with Shields (Top)

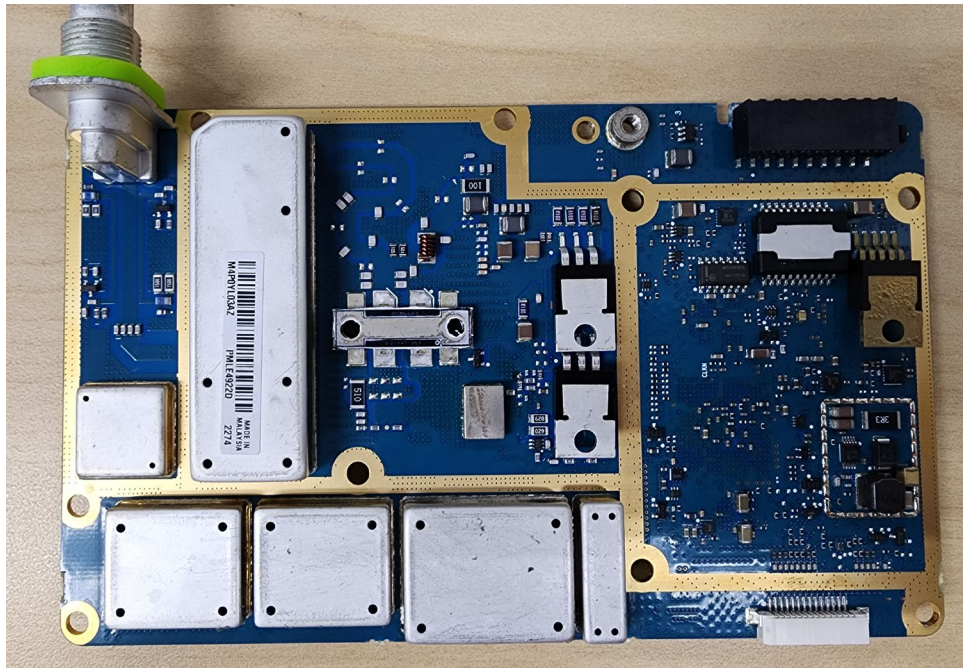


Exhibit 9B - RF board without Shields (Top)

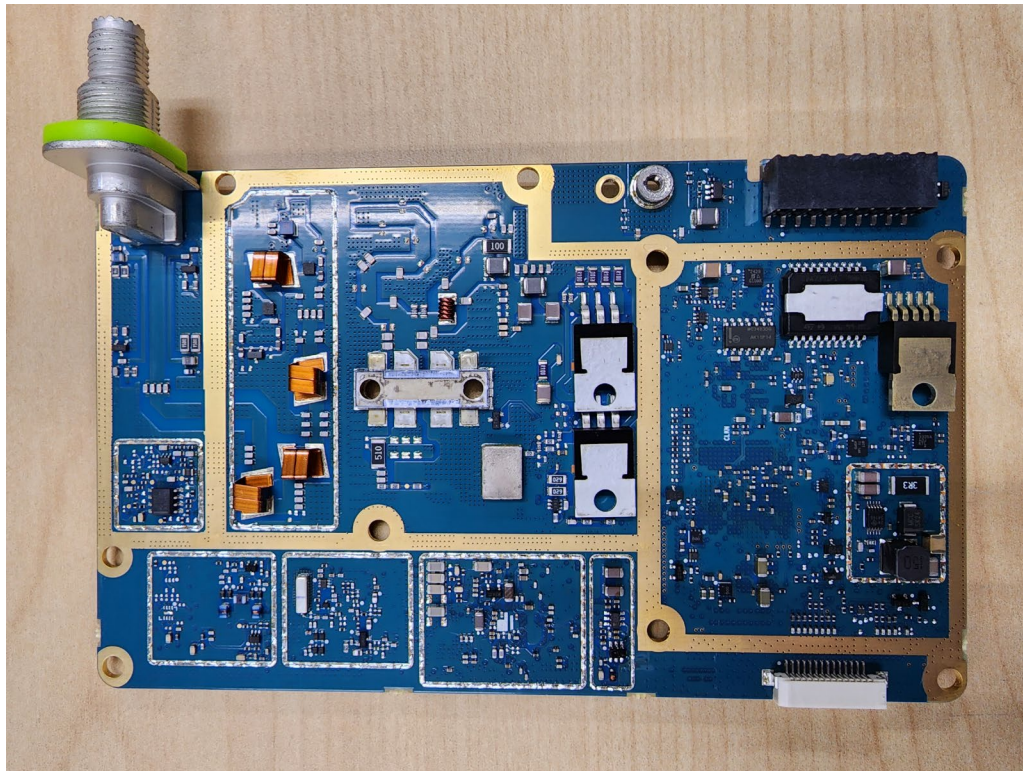




Exhibit 9C - RF board with Shields (Bottom)

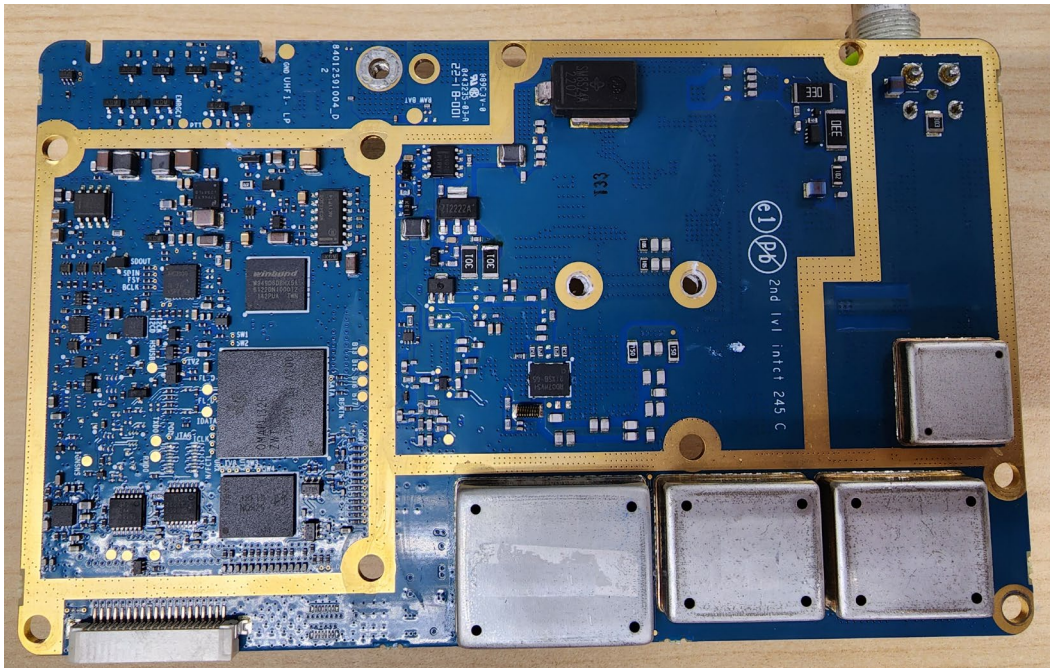


Exhibit 9D - RF board without Shields (Bottom)

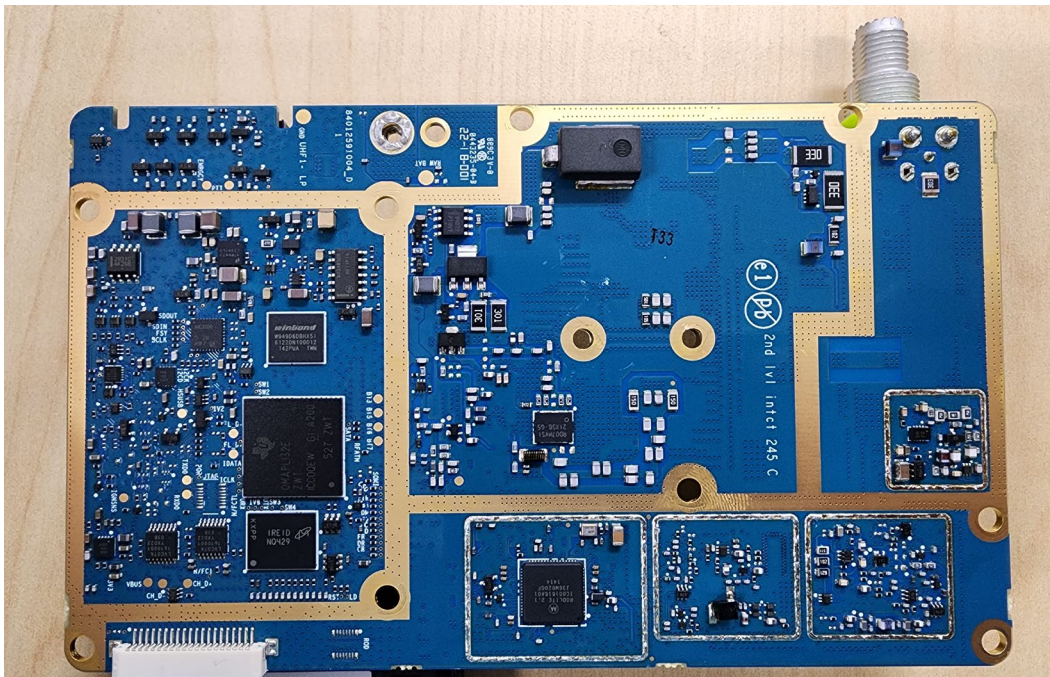
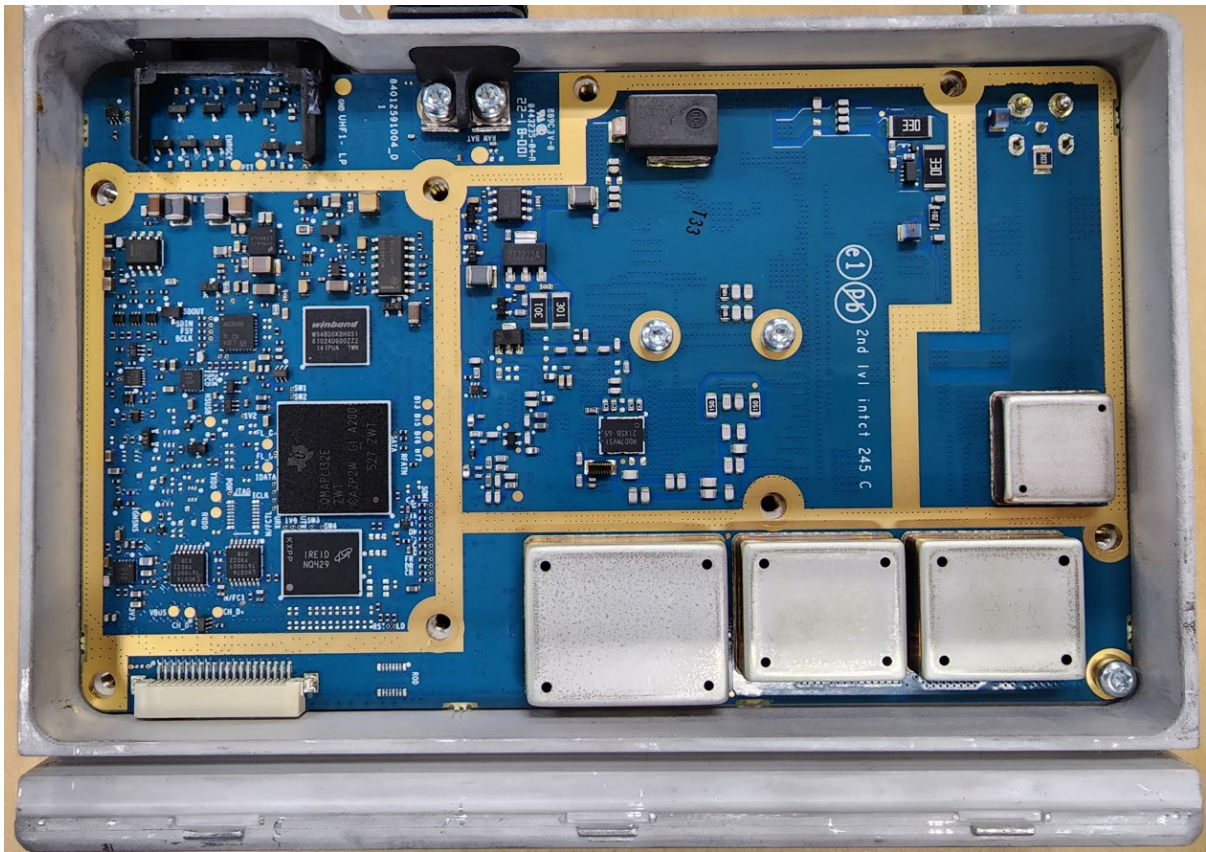




Exhibit 9E - RF boards with chassis and control head (Top), Model 1



(XPR 2500)

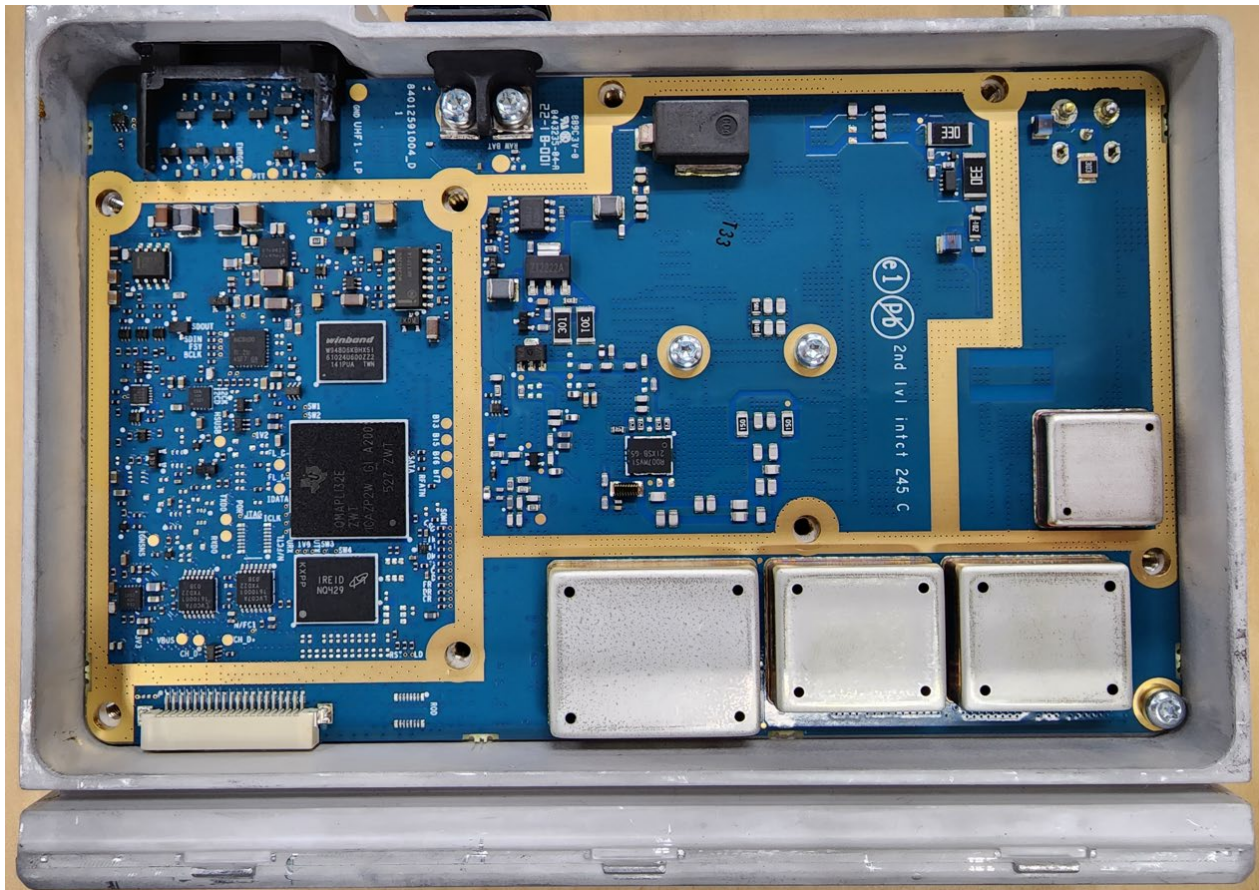
Exhibit 9F - Chassis and control head (Bottom), Model 1



(XPR 2500)

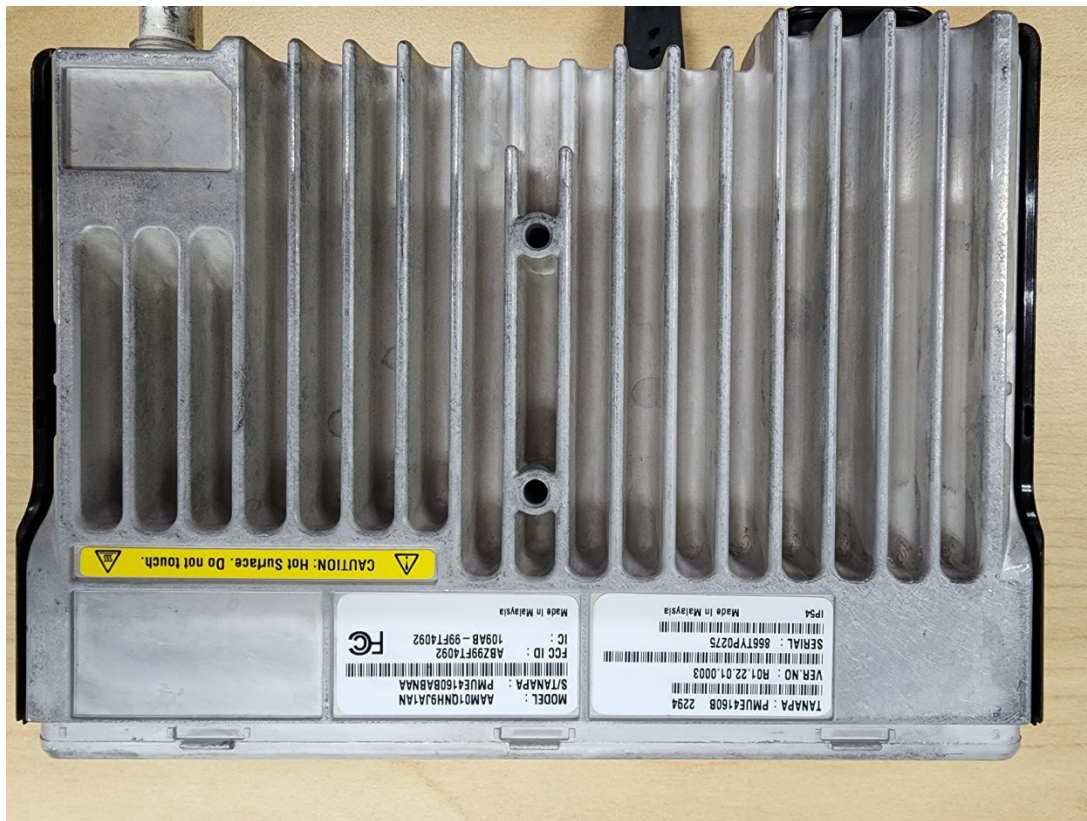


Exhibit 9G - RF boards with chassis and control head (Top), Model 2



(CM300d)

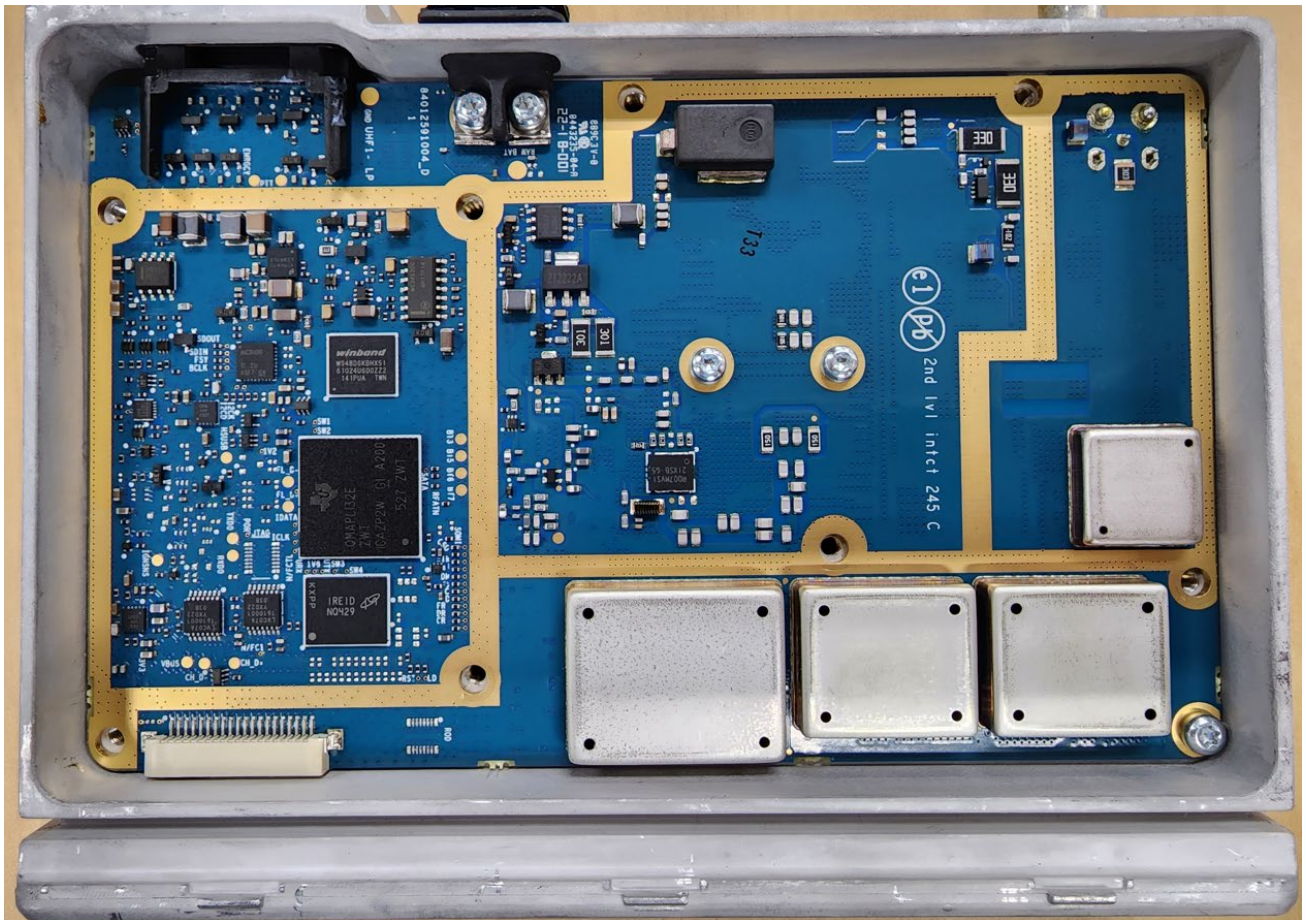
Exhibit 9H - Chassis and control head (Bottom), Model 2



(CM300d)



Exhibit 9I - RF boards with chassis and control head (Top), Model 3



(CM200d)



Exhibit 9J - Chassis and control head (Bottom), Model 3



(CM200d)

Exhibit 9K - GOB board (Top)

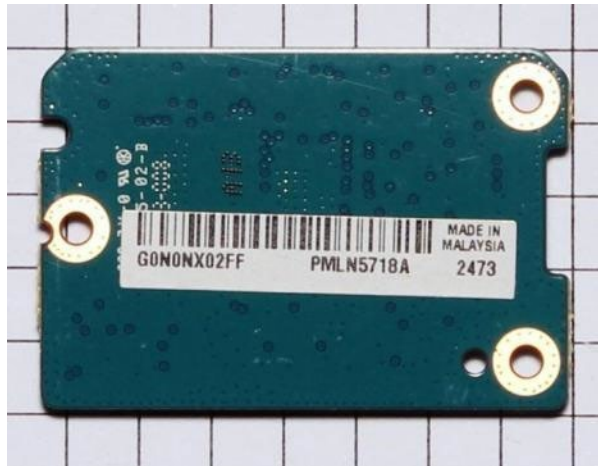


Exhibit 9L - GOB board with Shield (Bottom)

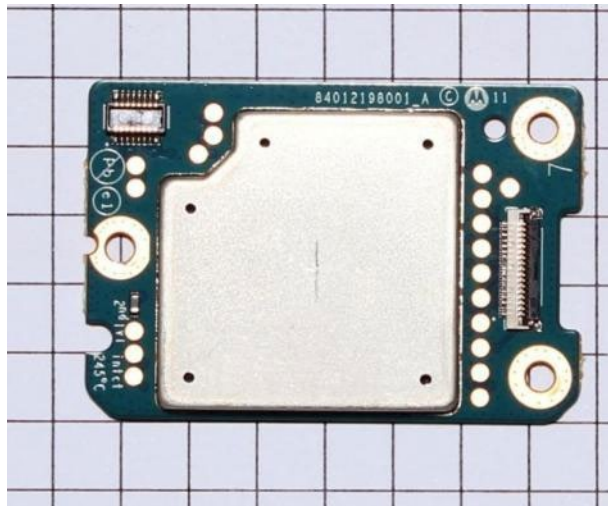


Exhibit 9M - GOB board without Shield (Bottom)

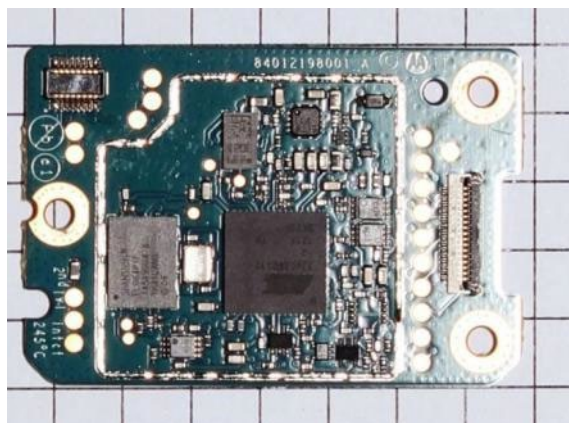




Exhibit 9N - Exploded view of Radio

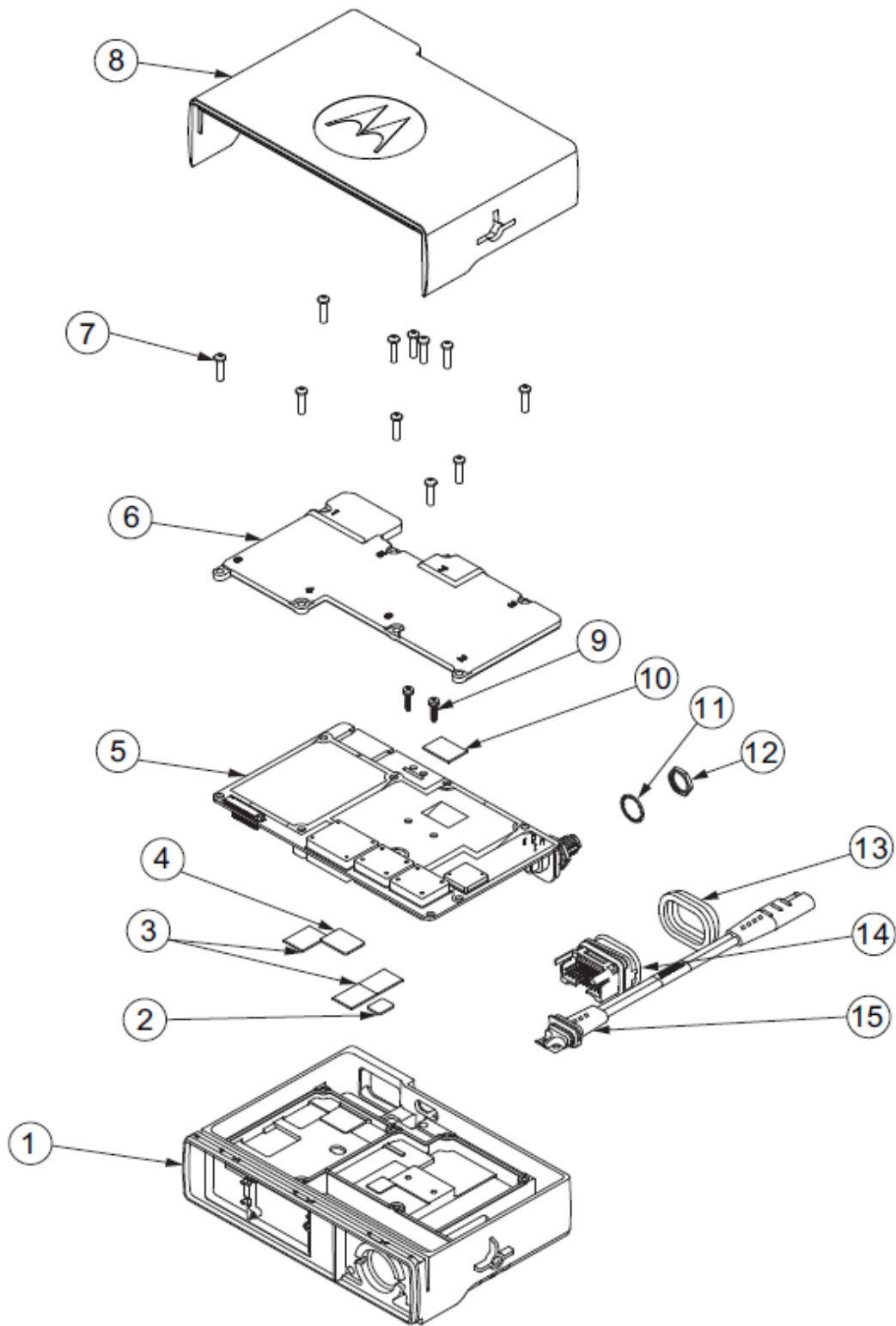


Exhibit 9O - Exploded view of Alphanumeric Display control head

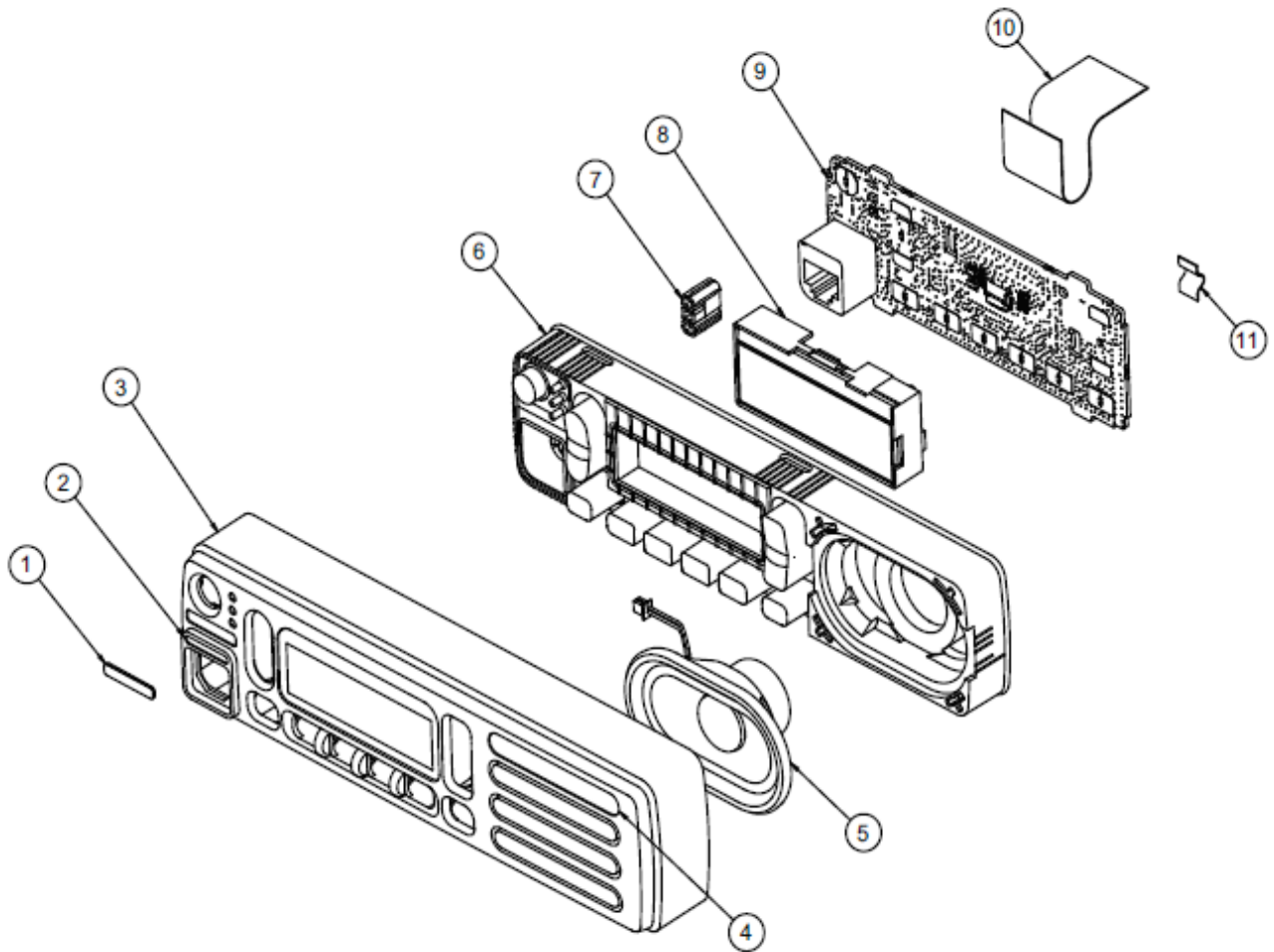




Exhibit 9P - Exploded view of Numeric Display control head

