

EXHIBIT 3

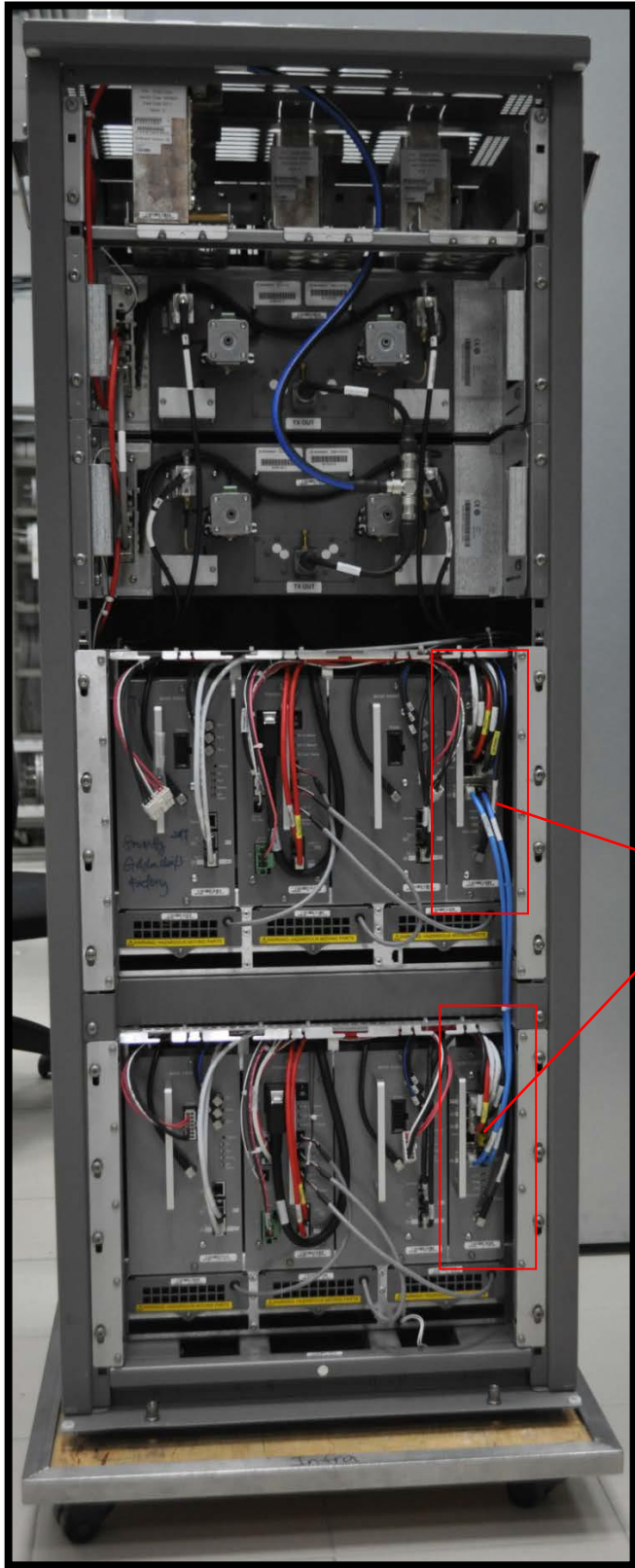
EXTERNAL PHOTOGRAPHS

(Pursuant to FCC Part 2.1033(b)(7) and 2.1033(c)(12) and RSP 100 Annex C)

The following photographs are attached.

	<u>Exhibit</u>
1. Front View of MTS 4 Base Radio Cabinet	3A
2. Back View of MTS 4 Base Radio Cabinet	3B
3. Side View of MTS 4 Base Radio Cabinet (Left)	3C
4. Side View of MTS 4 Base Radio Cabinet (Right)	3D
5. Top View of MTS 4 Base Radio Cabinet (FCC/IC label location)	3E
6. Front View of MTS 2 Base Radio Cabinet	3F
7. Back View of MTS 2 Base Radio Cabinet	3G
8. Side View of MTS 2 Base Radio Cabinet (Left)	3H
9. Side View of MTS 2 Base Radio Cabinet (Right)	3I
10. Top View of MTS 2 Base Radio Cabinet (FCC/IC label location)	3J

Exhibit 3A – Front View of MTS 4 Base Radio Cabinet



Note. The Site Controller will be replaced with XHUB for the expansion cabinet

Exhibit 3B – Back View of MTS 4 Base Radio Cabinet



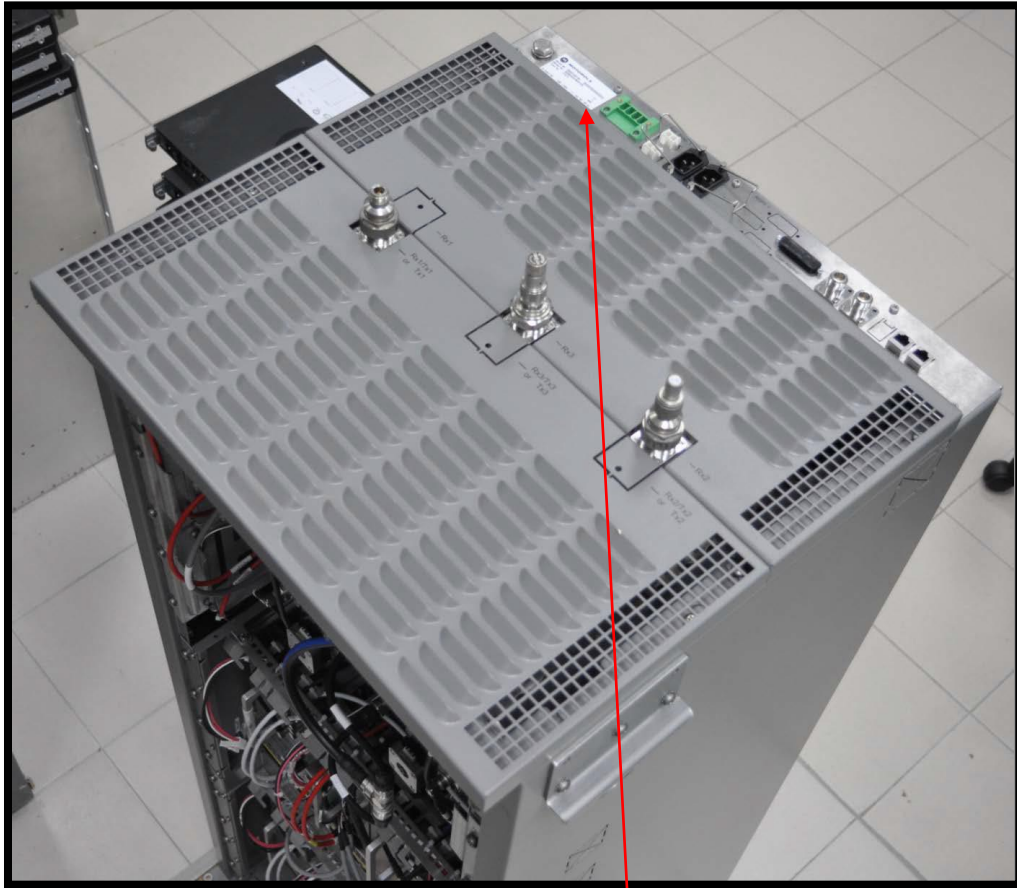
Exhibit 3C – Side View of MTS 4 Base Radio Cabinet (Left)



Exhibit 3D – Side View of MTS 4 Base Radio Cabinet (Right)



Exhibit 3E – Top View of MTS 4 Base Radio Cabinet (FCC/IC label location)



Location of FCC/IC Identification Label

Exhibit 3F – Front View of MTS 2 Base Radio Cabinet



Exhibit 3G – Back View of MTS 2 Base Radio Cabinet



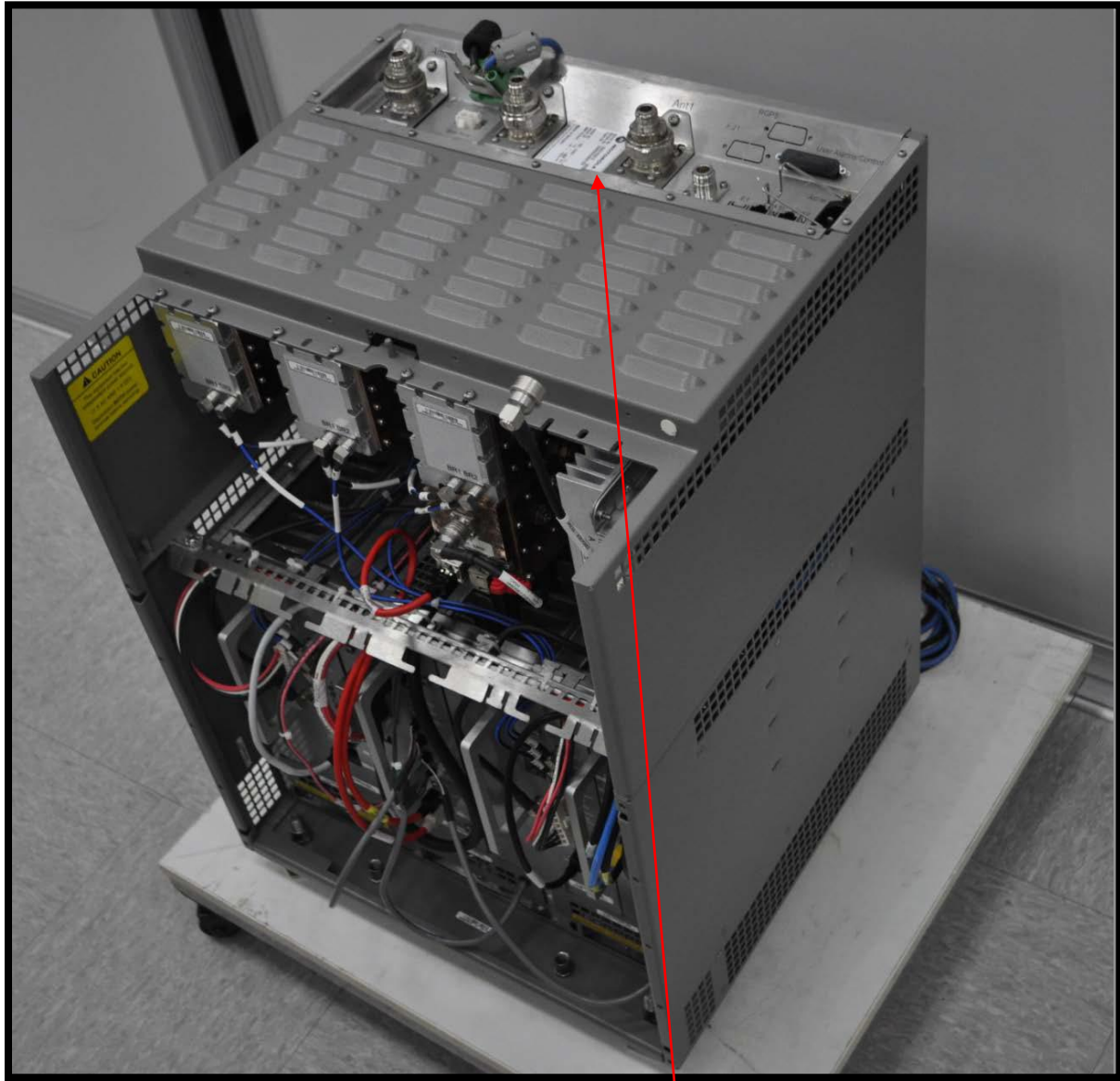
Exhibit 3H – Side View of MTS 2 Base Radio Cabinet (Left)



Exhibit 3I – Side View of MTS 2 Base Radio Cabinet (Right)



Exhibit 3J – Top View of MTS 2 Base Radio Cabinet (FCC/IC label location)



Location of FCC/IC Identification Label