

Hitachi Ltd. FCC ID: ABLSH-G1000

SAM Phantom; Flat Section; Position: (270°,90°)
Probe: ET3DV6 - SN1590; ConvF(5.30,5.30,5.30); Crest factor: 1.0
1900 MHz Muscle: $\sigma = 1.55$ mho/m $\epsilon_r = 51.7$ $\rho = 1.00$ g/cm³

Coarse: Dx = 15.0, Dy = 15.0, Dz = 10.0

Cube 5x5x7

SAR (1g): 0.342 mW/g, SAR (10g): 0.182 mW/g

Body-Worn SAR with Softcase, Belt-Clip, & Ear-Microphone Accessories

2.3 cm Belt-Clip Separation Distance to Planar Phantom

SH-G1000 PCS CDMA Phone/PDA

Fixed Stubby Antenna

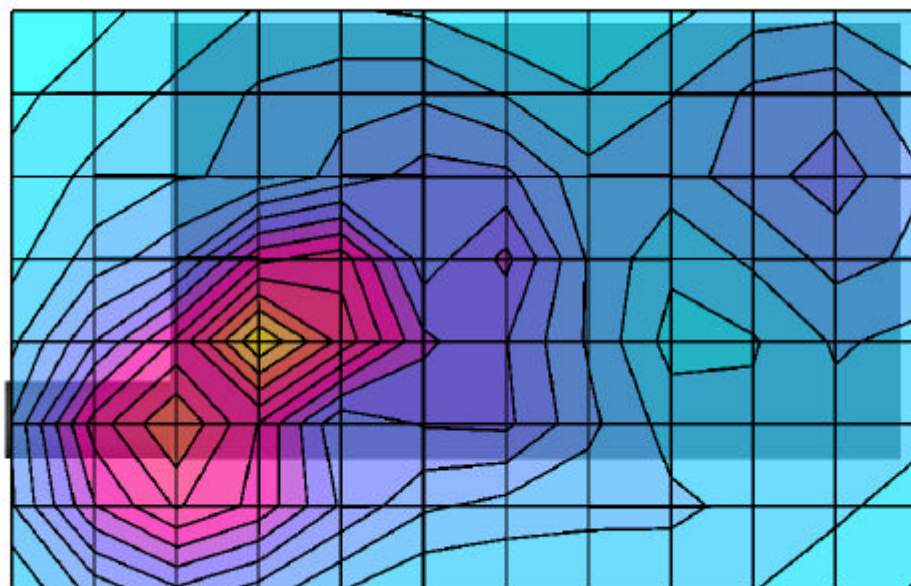
3.7V Lithium-ion Battery (Model: SH-G1000BAT)

Channel 0025 [1851.25 MHz]

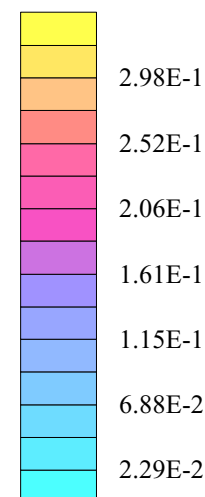
Conducted Power: 24.5 dBm

Ambient Temp. 22.8°C; Fluid Temp. 22.0°C

Date Tested: March 10, 2003



SAR_{Tot} [mW/g]



Hitachi Ltd. FCC ID: ABLSH-G1000

SAM Phantom; Flat Section; Position: (270°,90°)
 Probe: ET3DV6 - SN1590; ConvF(5.30,5.30,5.30); Crest factor: 1.0
 1900 MHz Muscle: $\sigma = 1.55$ mho/m $\epsilon_r = 51.7$ $\rho = 1.00$ g/cm³

Coarse: Dx = 15.0, Dy = 15.0, Dz = 10.0

Cube 5x5x7

SAR (1g): 0.401 mW/g, SAR (10g): 0.205 mW/g

Body-Worn SAR with Softcase, Belt-Clip, & Ear-Microphone Accessories

2.3 cm Belt-Clip Separation Distance to Planar Phantom

SH-G1000 PCS CDMA Phone/PDA

Fixed Stubby Antenna

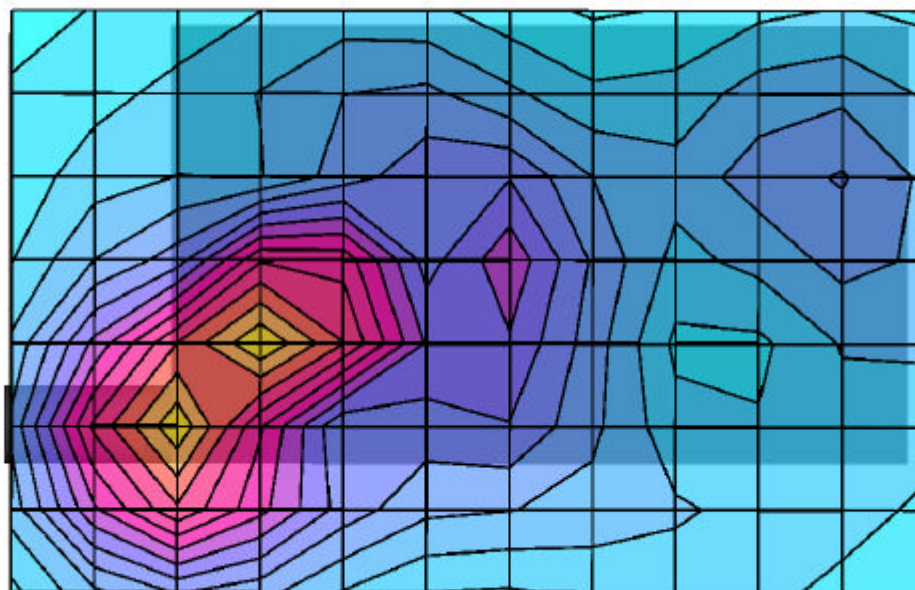
3.7V Lithium-ion Battery (Model: SH-G1000BAT)

Channel 0600 [1880.00 MHz]

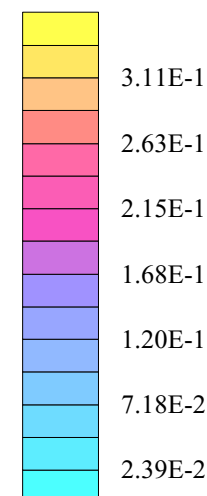
Conducted Power: 24.5 dBm

Ambient Temp. 22.8°C; Fluid Temp. 22.0°C

Date Tested: March 10, 2003



SAR_{Tot} [mW/g]



Hitachi Ltd. FCC ID: ABLSH-G1000

SAM Phantom; Flat Section; Position: (270°,90°)
Probe: ET3DV6 - SN1590; ConvF(5.30,5.30,5.30); Crest factor: 1.0
1900 MHz Muscle: $\sigma = 1.55$ mho/m $\epsilon_r = 51.7$ $\rho = 1.00$ g/cm³

Coarse: Dx = 15.0, Dy = 15.0, Dz = 10.0

Cube 5x5x7

SAR (1g): 0.271 mW/g, SAR (10g): 0.162 mW/g

Body-Worn SAR with Softcase, Belt-Clip, & Ear-Microphone Accessories

2.3 cm Belt-Clip Separation Distance to Planar Phantom

SH-G1000 PCS CDMA Phone/PDA

Fixed Stubby Antenna

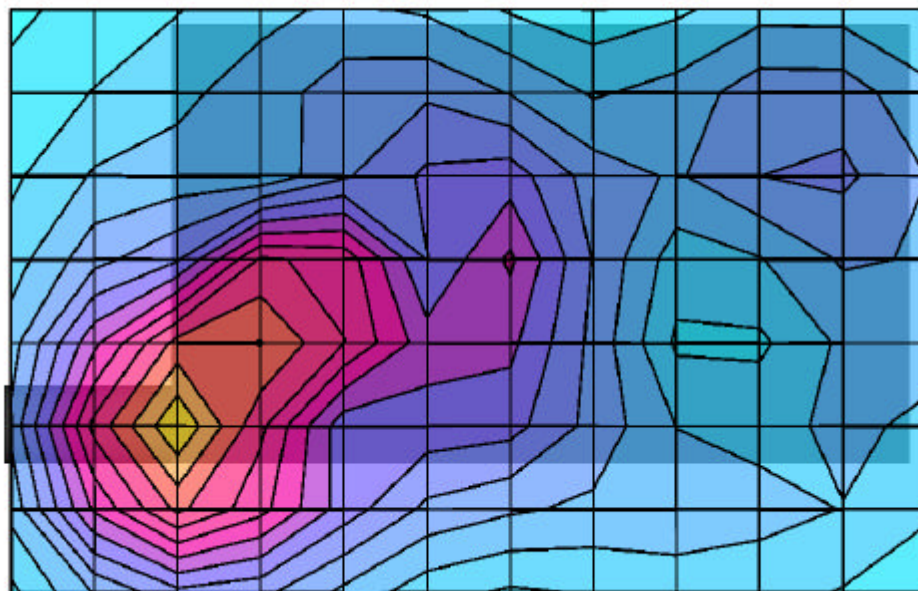
3.7V Lithium-ion Battery (Model: SH-G1000BAT)

Channel 1175 [1908.75 MHz]

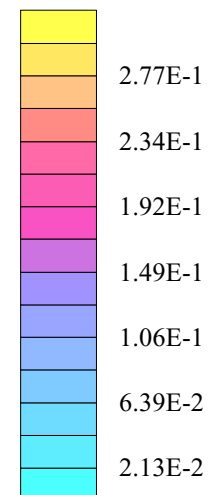
Conducted Power: 24.5 dBm

Ambient Temp. 22.8°C; Fluid Temp. 22.0°C

Date Tested: March 10, 2003



SAR_{Tot} [mW/g]



Hitachi Ltd. FCC ID: ABLSH-G1000

SAM Phantom; Flat Section; Position: (270°,90°)
 Probe: ET3DV6 - SN1590; ConvF(5.30,5.30,5.30); Crest factor: 1.0
 1900 MHz Muscle: $\sigma = 1.55$ mho/m $\epsilon_r = 51.7$ $\rho = 1.00$ g/cm³

Coarse: Dx = 15.0, Dy = 15.0, Dz = 10.0

Cube 5x5x7

SAR (1g): 1.17 mW/g, SAR (10g): 0.662 mW/g

Lap Held SAR with Softcase & Ear-Microphone Accessories

Front Flip Cover Folded Behind Back Surface

1.0 cm Softcase Separation Distance to Planar Phantom

SH-G1000 PCS CDMA Phone/PDA

Fixed Stubby Antenna

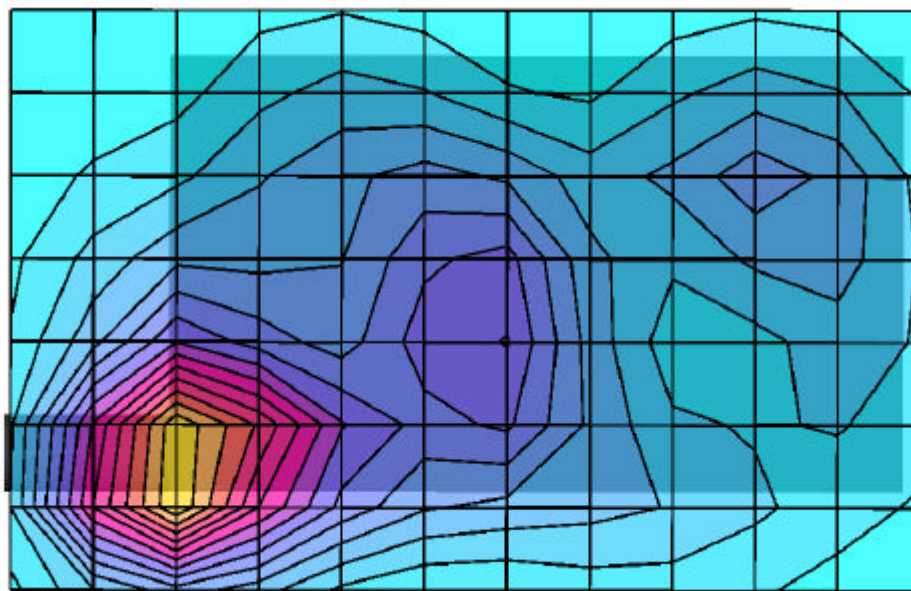
3.7V Lithium-ion Battery (Model: SH-G1000BAT)

Channel 0025 [1851.25 MHz]

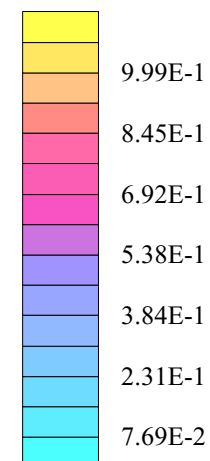
Conducted Power: 24.5 dBm

Ambient Temp. 22.8°C; Fluid Temp. 22.0°C

Date Tested: March 10, 2003



SAR_{Tot} [mW/g]



Hitachi Ltd. FCC ID: ABLSH-G1000

SAM Phantom; Flat Section

Probe: ET3DV6 - SN1590; ConvF(5.30,5.30,5.30); Crest factor: 1.0

1900 MHz Muscle: $\sigma = 1.55$ mho/m $\epsilon_r = 51.7$ $\rho = 1.00$ g/cm³

Z-Axis Extrapolation at Peak SAR Location

Lap Held SAR with Softcase & Ear-Microphone Accessories

Front Flip Cover Folded Behind Back Surface

1.0 cm Softcase Separation Distance to Planar Phantom

SH-G1000 PCS CDMA Phone/PDA

Fixed Stubby Antenna

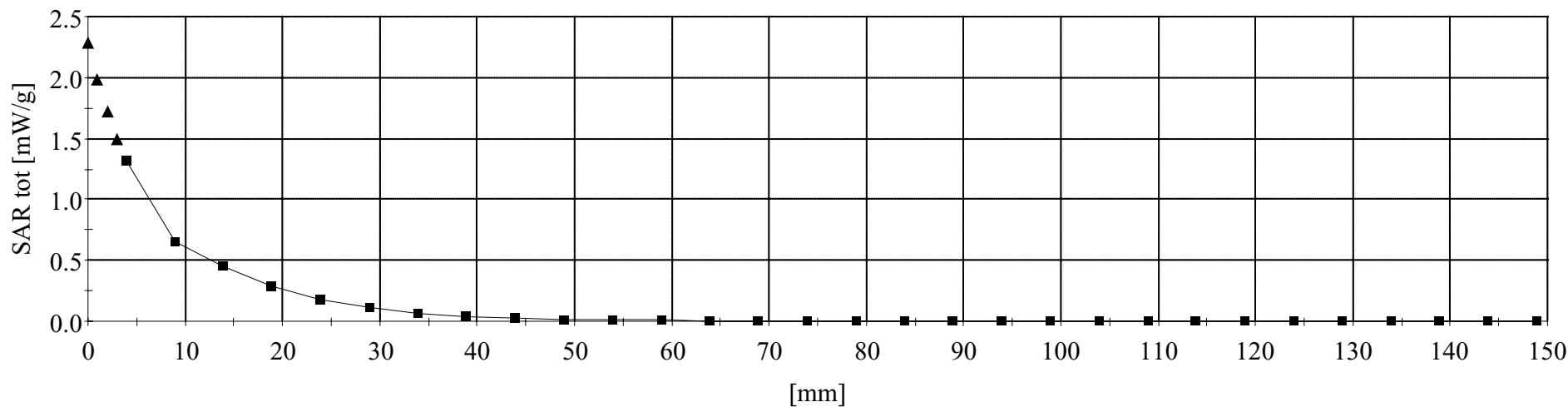
3.7V Lithium-ion Battery (Model: SH-G1000BAT)

Channel 0025 [1851.25 MHz]

Conducted Power: 24.5 dBm

Ambient Temp. 22.8°C; Fluid Temp. 22.0°C

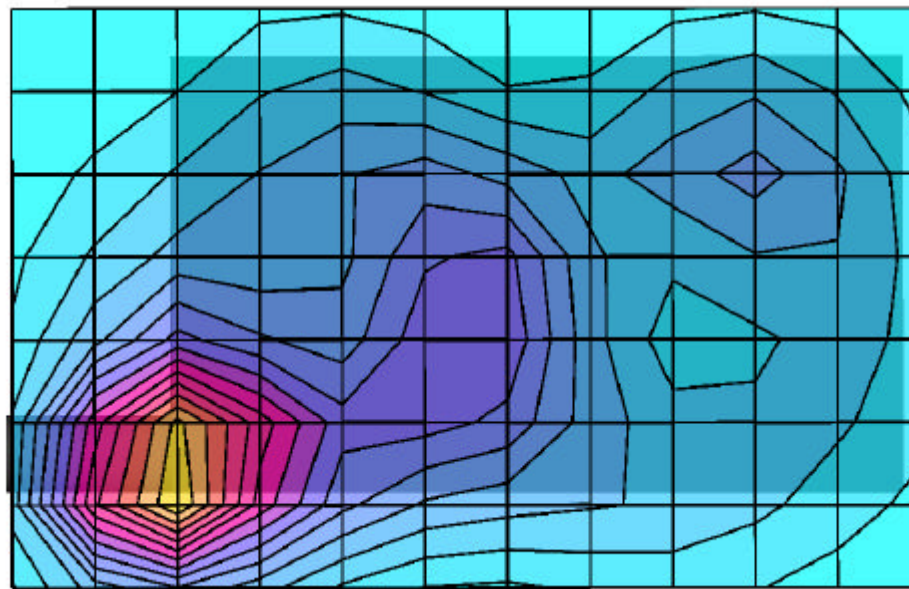
Date Tested: March 10, 2003



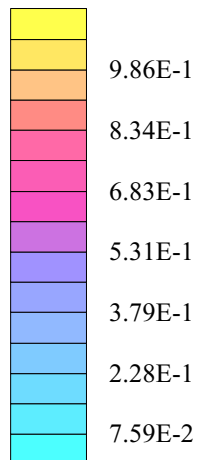
Hitachi Ltd. FCC ID: ABLSH-G1000

SAM Phantom; Flat Section; Position: (270°,90°)
 Probe: ET3DV6 - SN1590; ConvF(5.30,5.30,5.30); Crest factor: 1.0
 1900 MHz Muscle: $\sigma = 1.55$ mho/m $\epsilon_r = 51.7$ $\rho = 1.00$ g/cm³
 Coarse: Dx = 15.0, Dy = 15.0, Dz = 10.0
 Cube 5x5x7
 SAR (1g): 1.07 mW/g, SAR (10g): 0.607 mW/g

Lap Held SAR with Softcase & Ear-Microphone Accessories
 Front Flip Cover Folded Behind Back Surface
 1.0 cm Softcase Separation Distance to Planar Phantom
 SH-G1000 PCS CDMA Phone/PDA
 Fixed Stubby Antenna
 3.7V Lithium-ion Battery (Model: SH-G1000BAT)
 Channel 0600 [1880.00 MHz]
 Conducted Power: 24.5 dBm
 Ambient Temp. 22.8°C; Fluid Temp. 22.0°C
 Date Tested: March 10, 2003



SAR_{Tot} [mW/g]



Hitachi Ltd. FCC ID: ABLSH-G1000

SAM Phantom; Flat Section; Position: (270°,90°)
Probe: ET3DV6 - SN1590; ConvF(5.30,5.30,5.30); Crest factor: 1.0
1900 MHz Muscle: $\sigma = 1.55$ mho/m $\epsilon_r = 51.7$ $\rho = 1.00$ g/cm³

Coarse: Dx = 15.0, Dy = 15.0, Dz = 10.0

Cube 5x5x7

SAR (1g): 0.922 mW/g, SAR (10g): 0.527 mW/g

Lap Held SAR with Softcase & Ear-Microphone Accessories

Front Flip Cover Folded Behind Back Surface

1.0 cm Softcase Separation Distance to Planar Phantom

SH-G1000 PCS CDMA Phone/PDA

Fixed Stubby Antenna

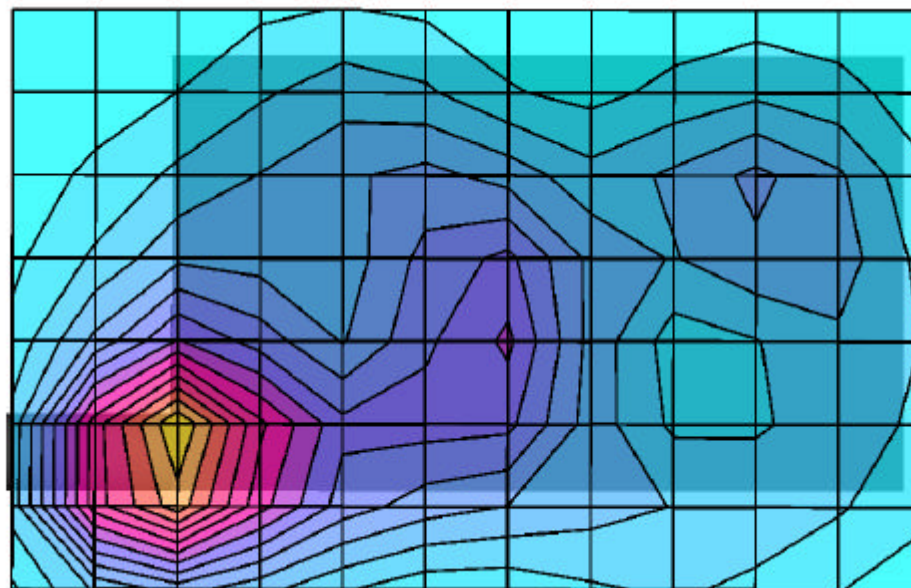
3.7V Lithium-ion Battery (Model: SH-G1000BAT)

Channel 1175 [1908.75 MHz]

Conducted Power: 24.5 dBm

Ambient Temp. 22.8°C; Fluid Temp. 22.0°C

Date Tested: March 10, 2003



SAR_{Tot} [mW/g]

