



SANMINA-SCI

EXHIBIT 6

Internal Photographs

Applicant: Northern Telecom Ltd.

For Certification on:

AB6UMTS1900IND

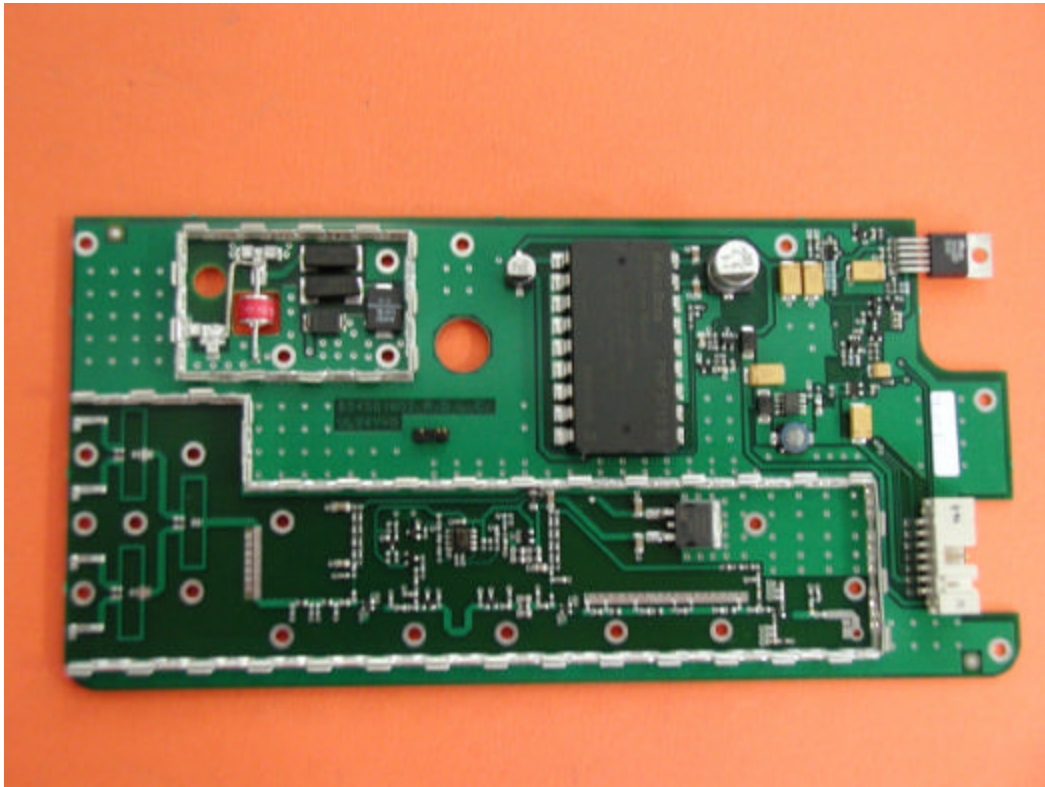


Figure 1: LNA-Control Power board

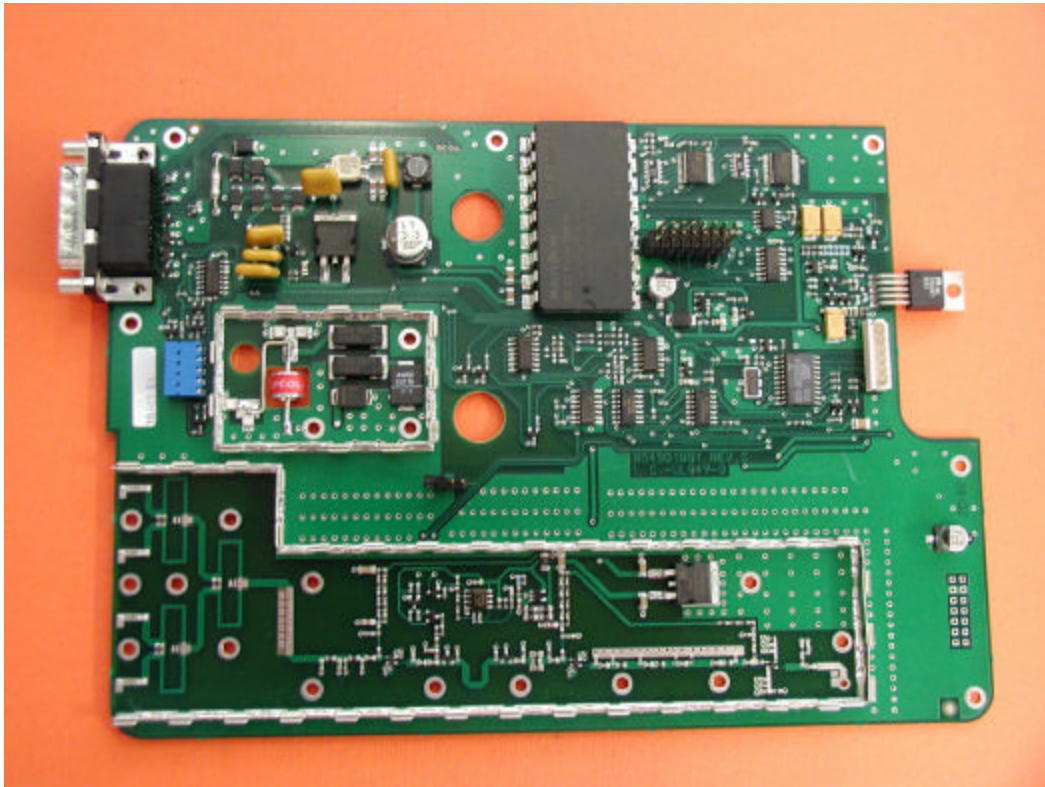


Figure 2: LNA-Control PW LED board



SANMINA-SCI

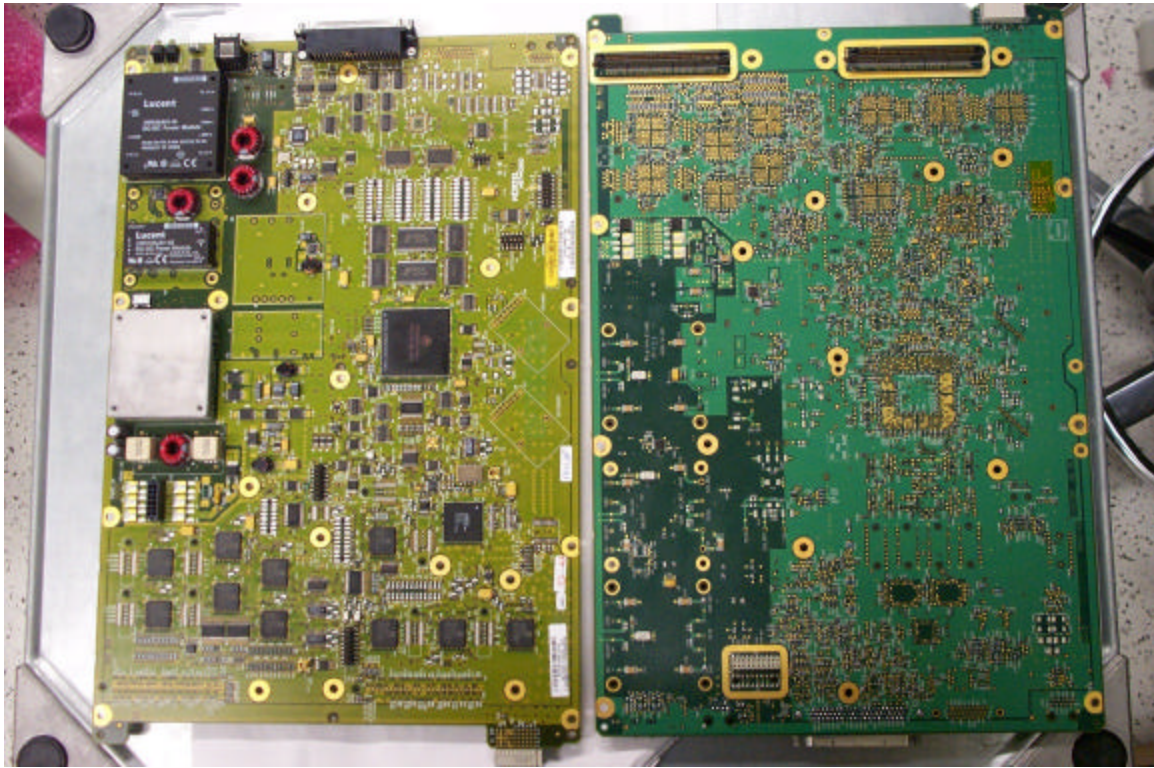


Figure 3: TRM Logic board (Top (left) and Bottom (right))

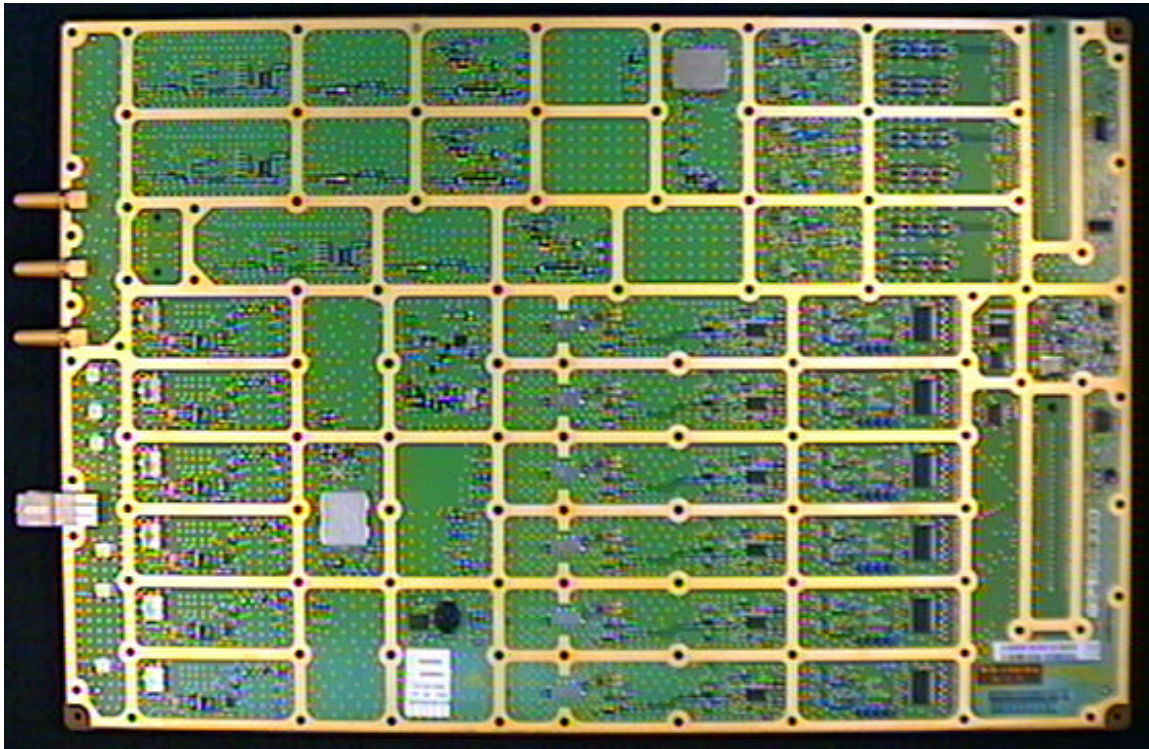


Figure 4: TRM Radio board (Top)

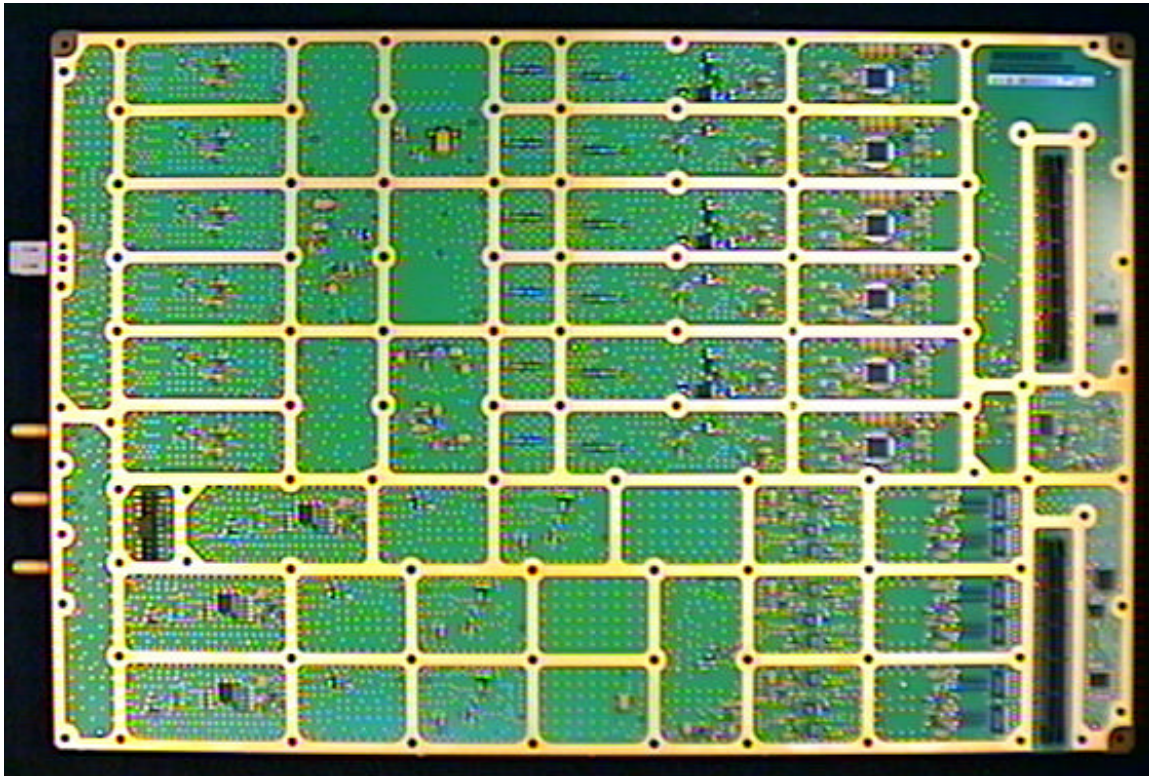


Figure 5: TRM Radio Board (Bottom)

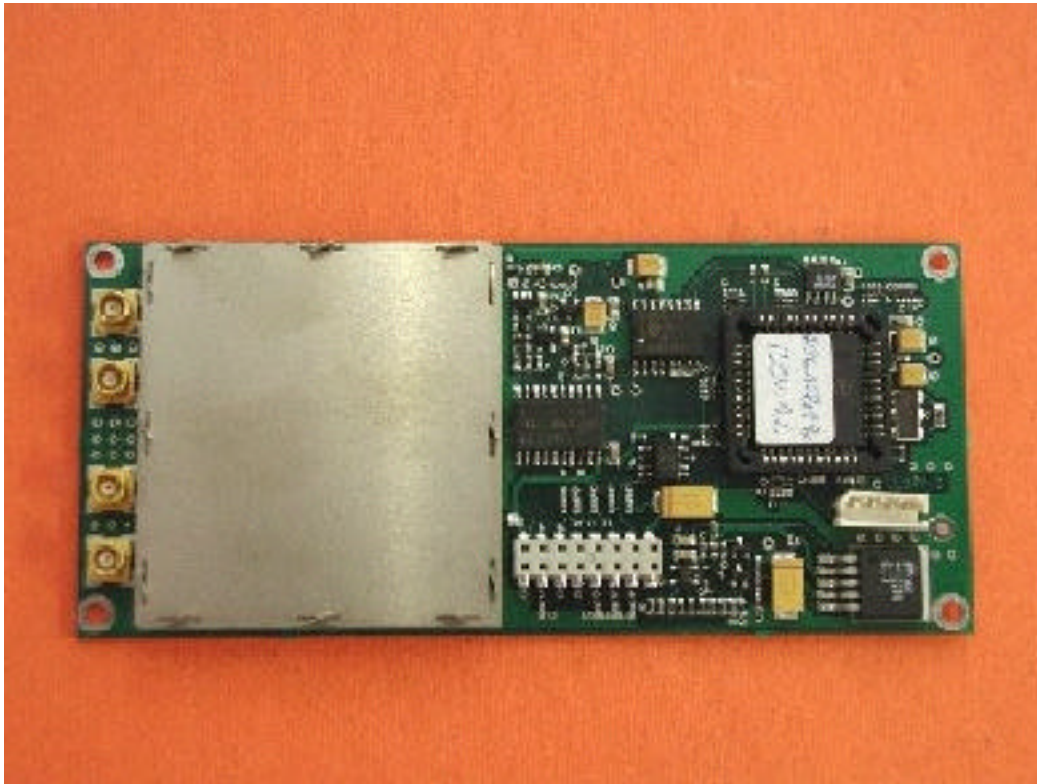
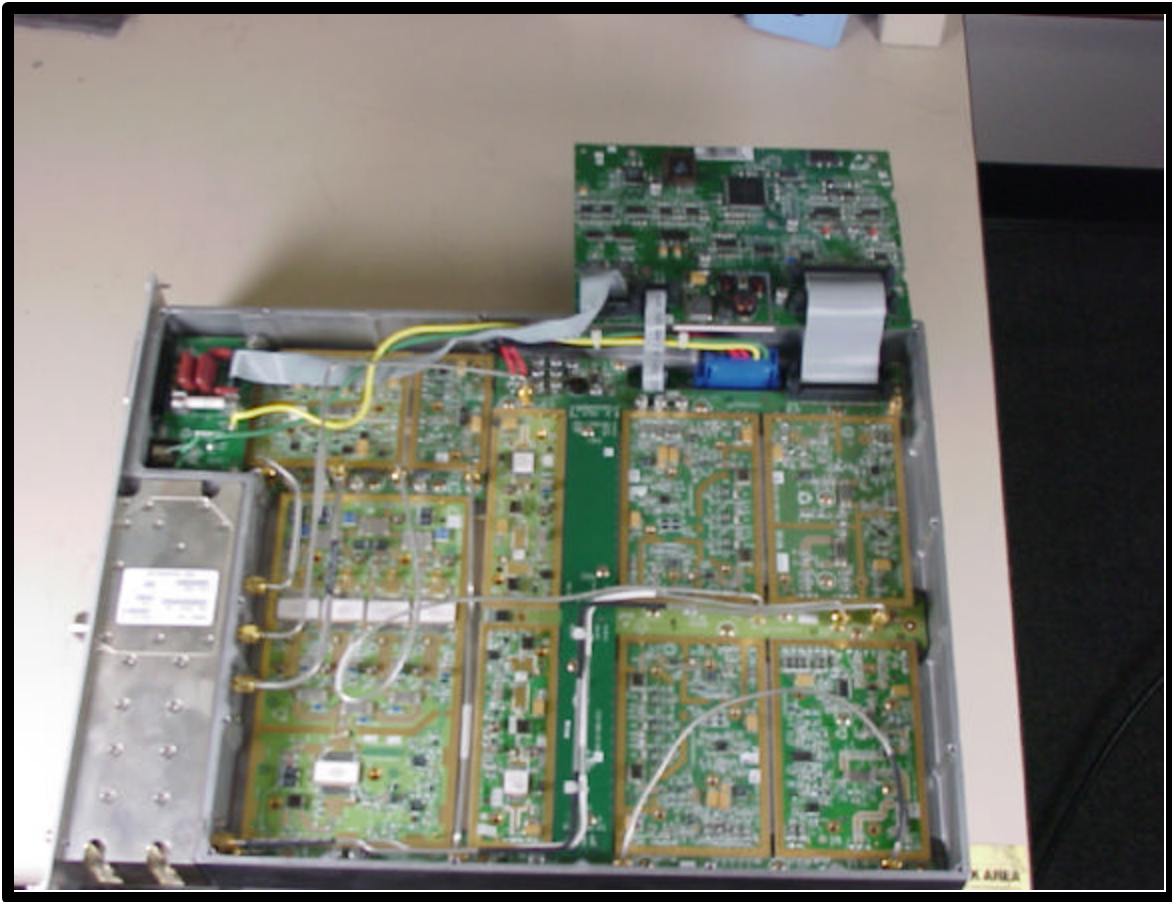


Figure 6: VSWR board

The information contained in this document is proprietary to Powerwave Technologies. Any reproduction in part or in whole without prior written authorization by Powerwave Technologies is prohibited

1900 MHz UMTS (Creole) MCPA



Digital image of 1900 MHz UMTS (Creole) MCPA PCBs

The information contained in this document is proprietary to Powerwave Technologies. Any reproduction in part or in whole without prior written authorization by Powerwave Technologies is prohibited