

Figure 1 – E-LDRX 850 MHz (Logic Board) Top View

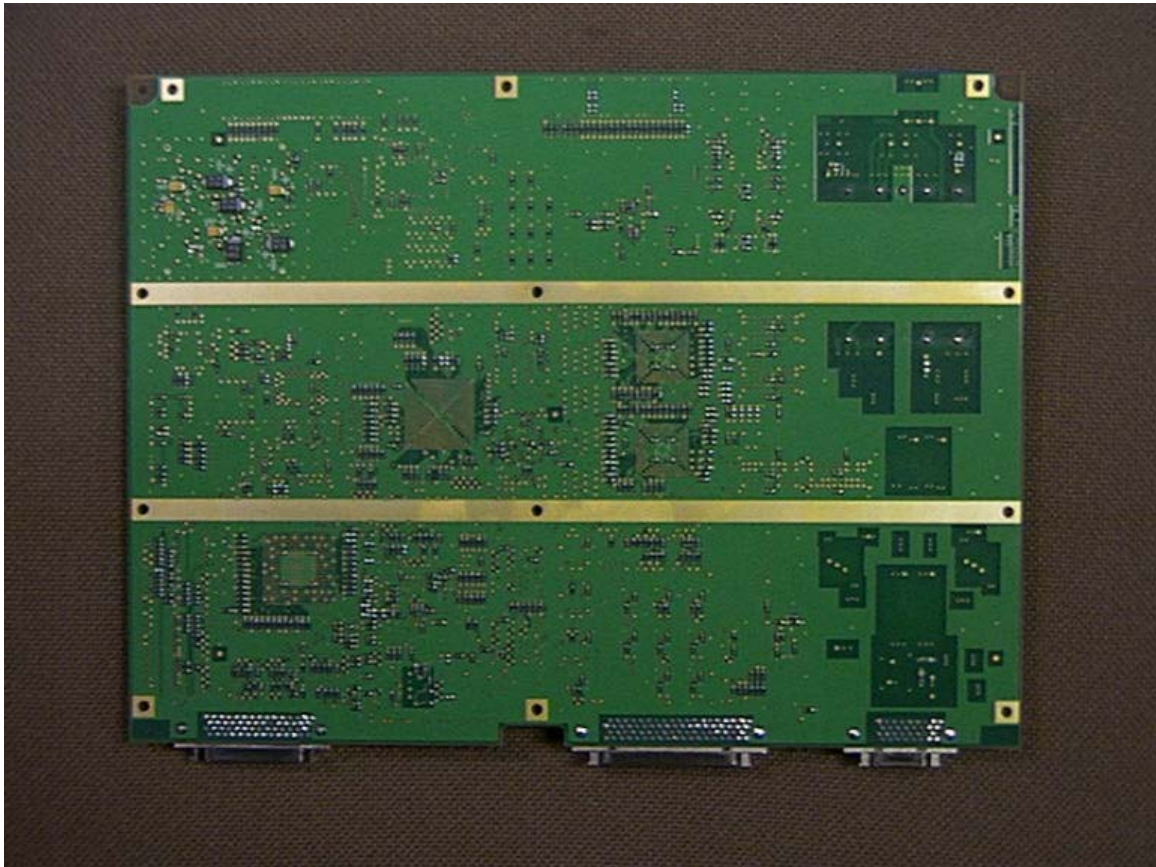


Figure 2 – E-LDRX 850 MHz (Logic Board) Bottom View

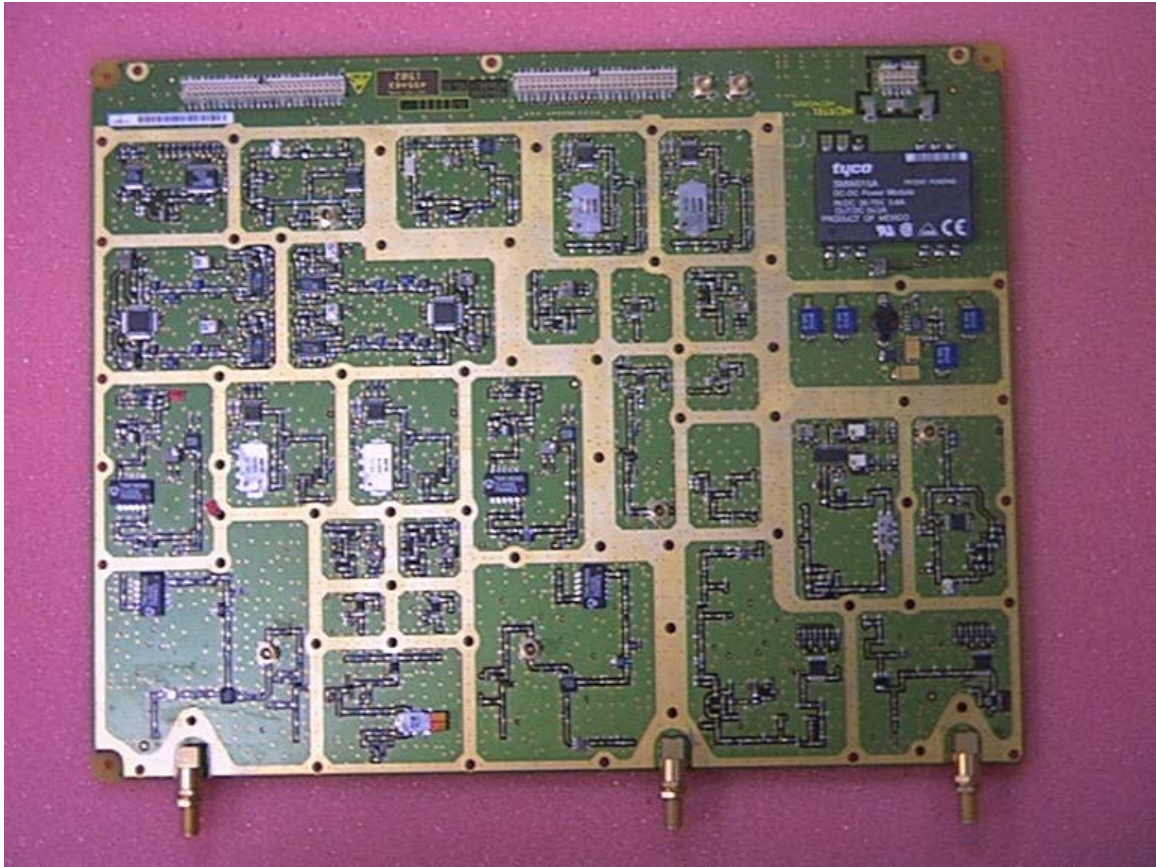


Figure 3 – E-RDRX 850 MHz (Radio Board) Top View

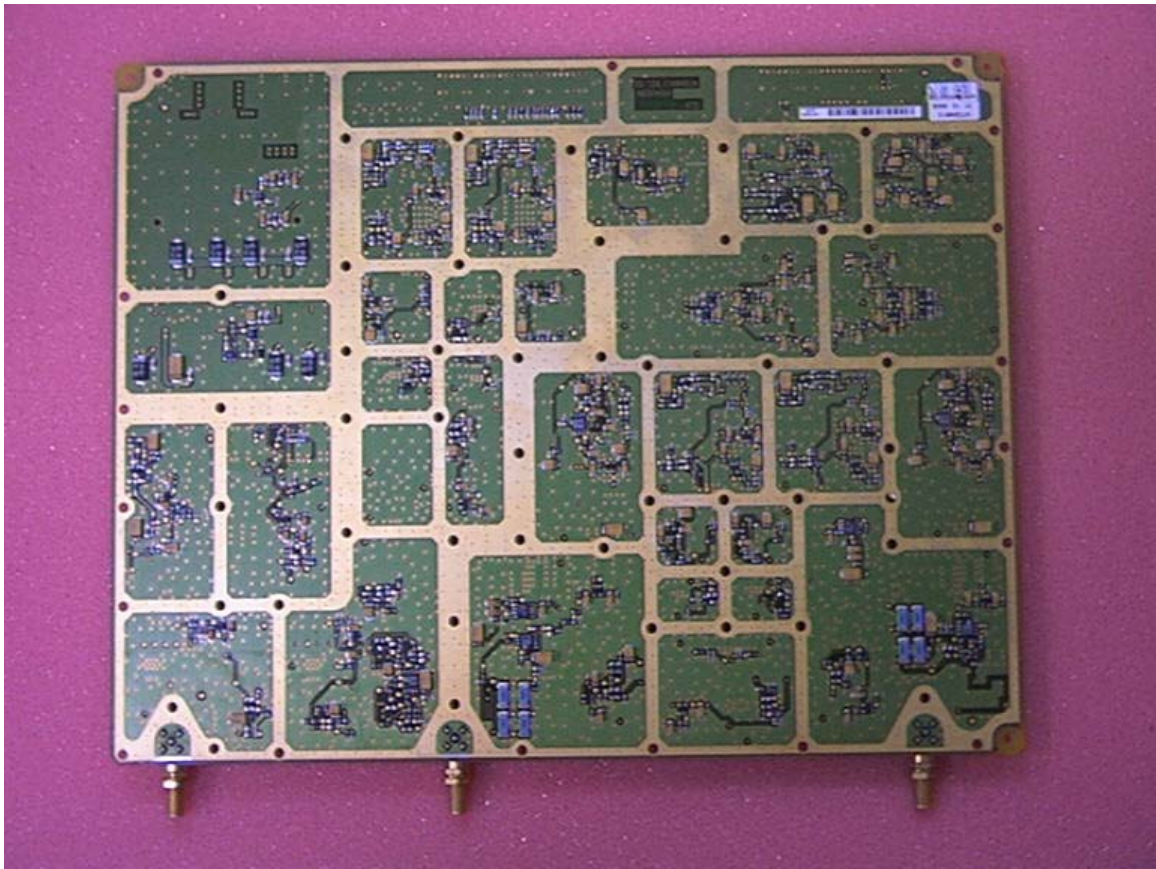


Figure 4 – E-RDRX 850 MHz (Radio Board) Bottom View

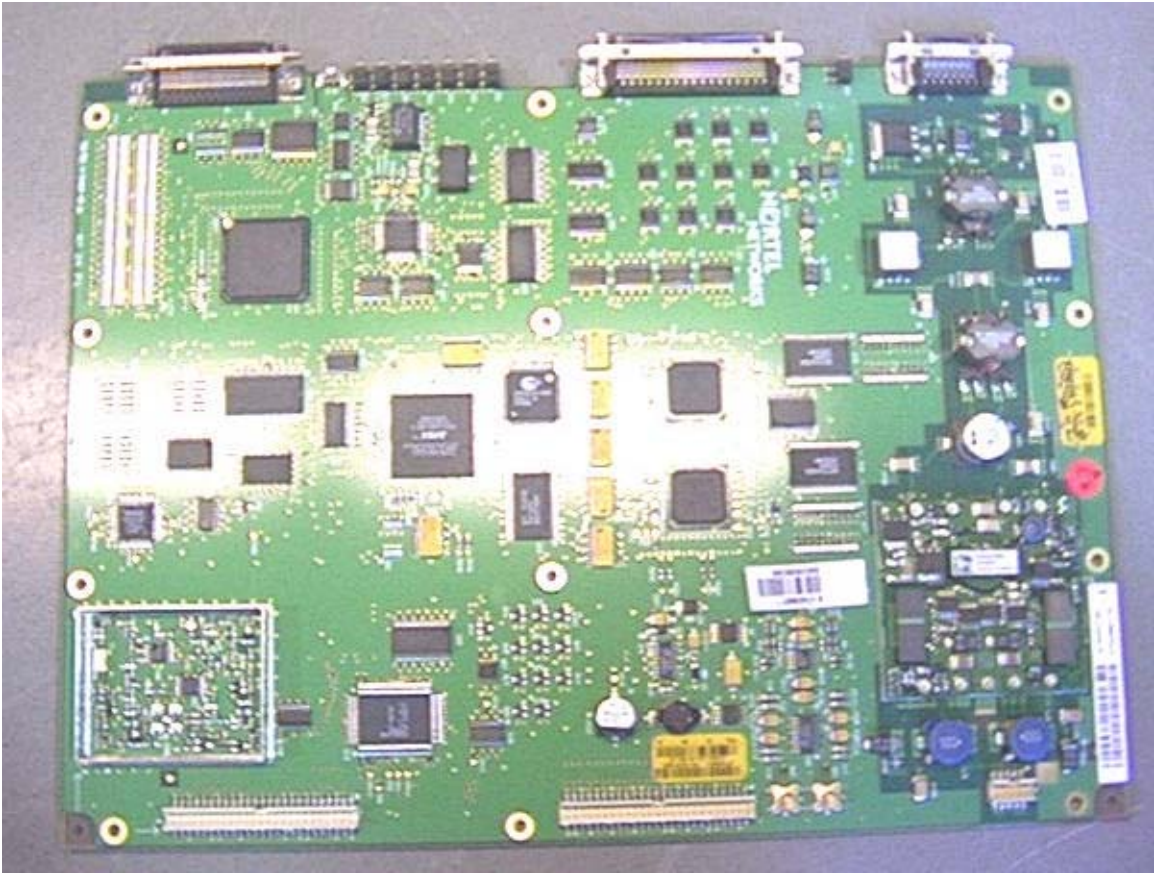


Figure 5 – E-LDRX 1900 MHz (Logic Board) Top View

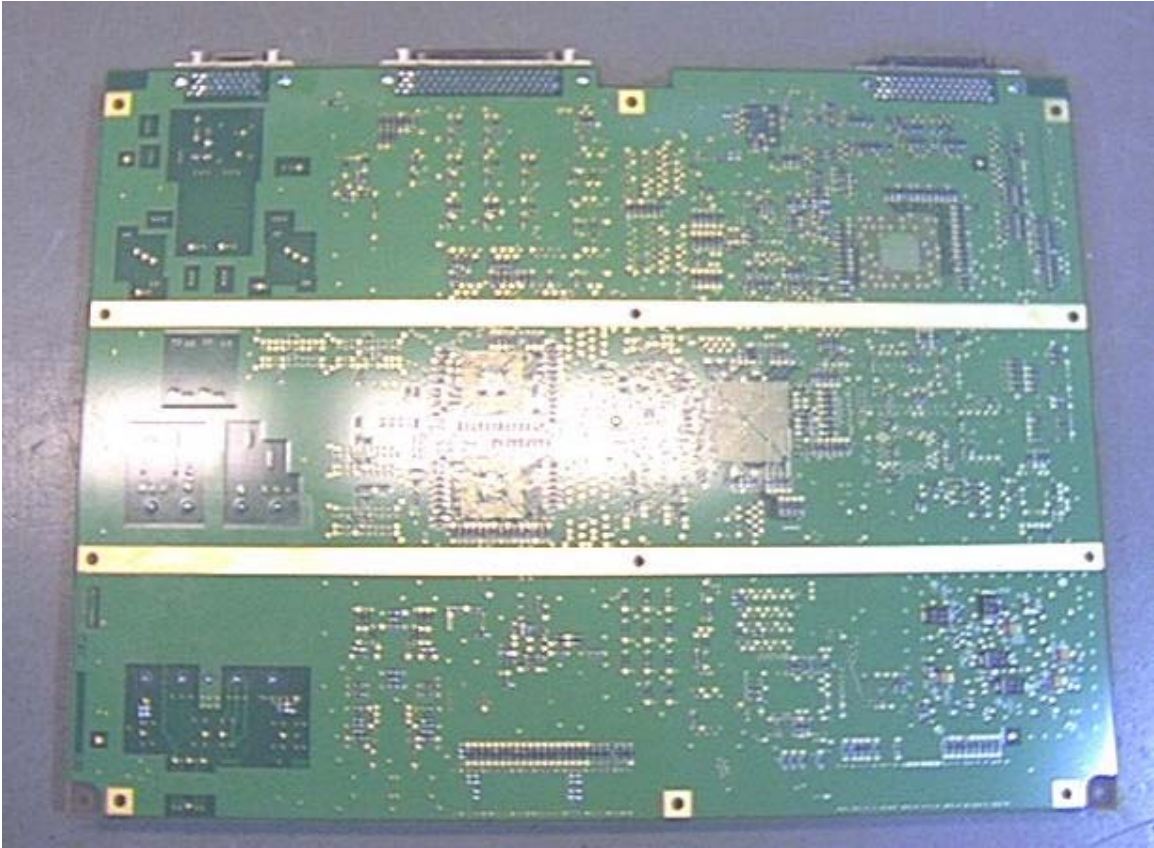


Figure 6 – E-LDRX 1900 MHz (Logic Board) Bottom View

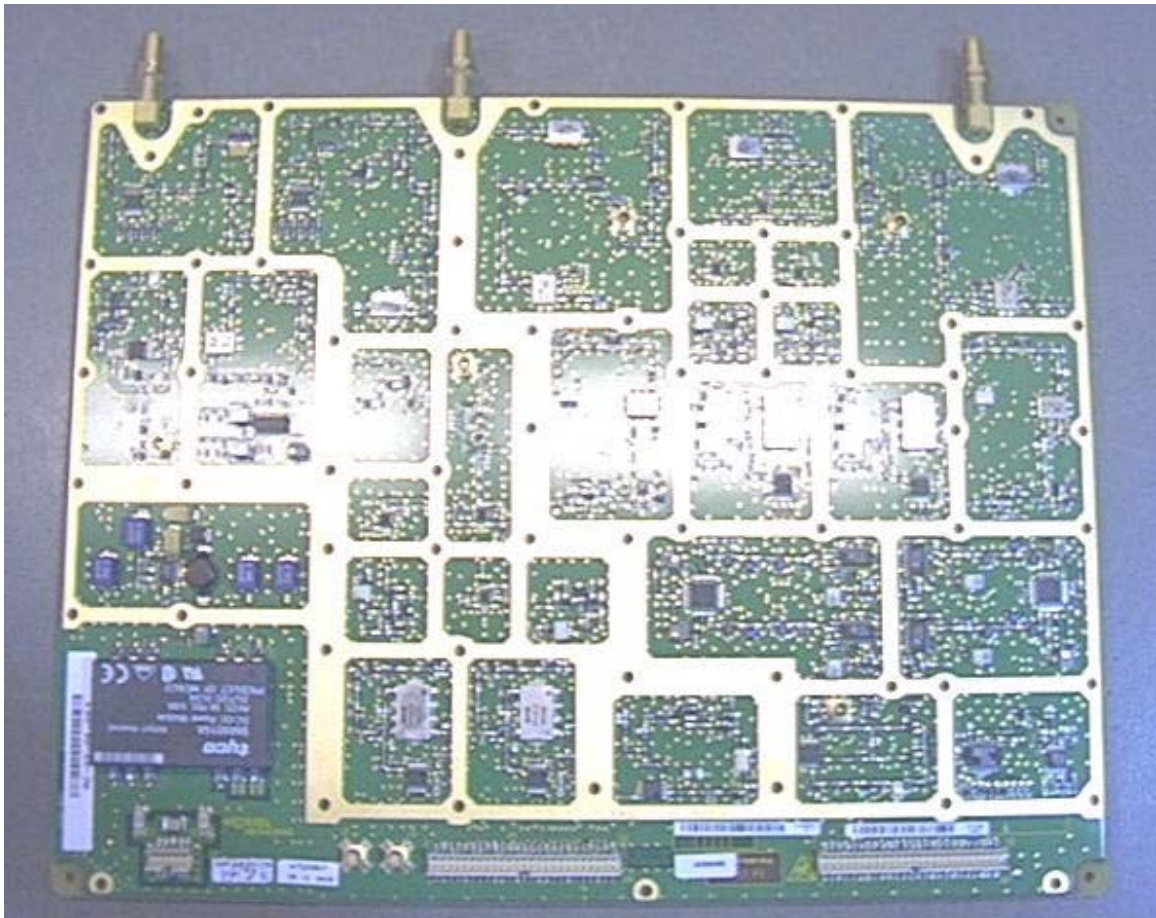


Figure 7 – E-RDRX 1900 MHz (Radio Board) Top View

---

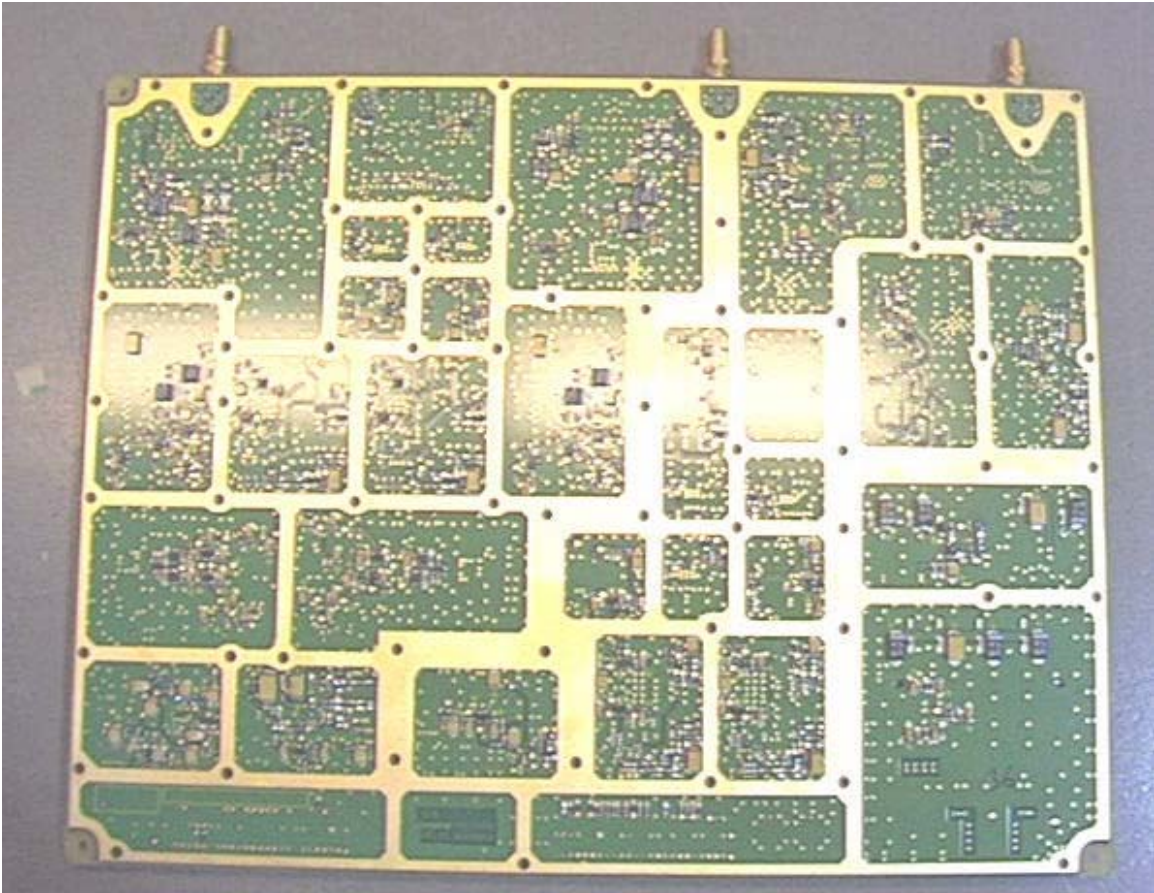


Figure 8 – E-RDRX 1900 MHz (Radio Board) Bottom View



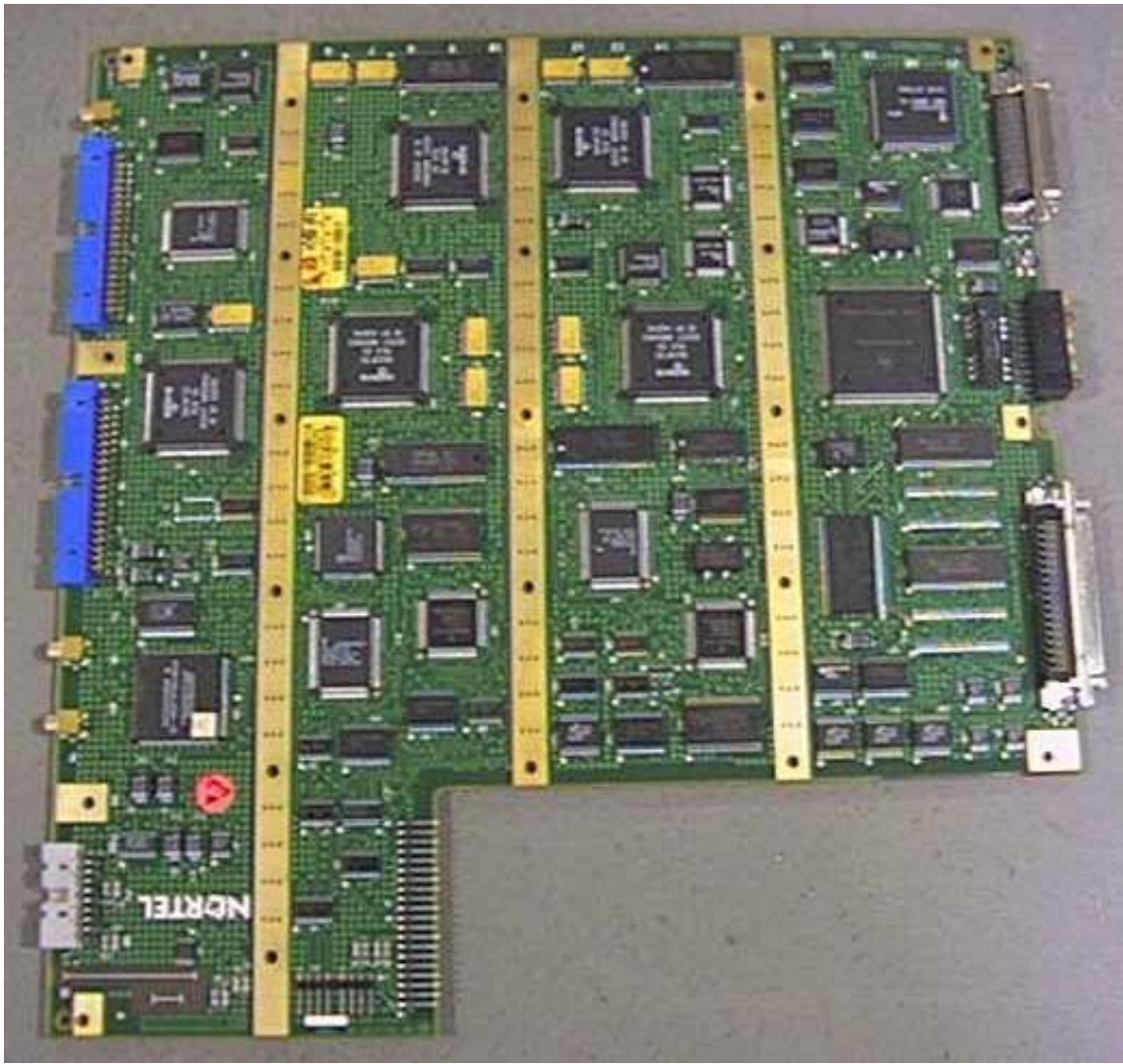


Figure 9 – LDRX 1900 MHz (Logic Board) Top View

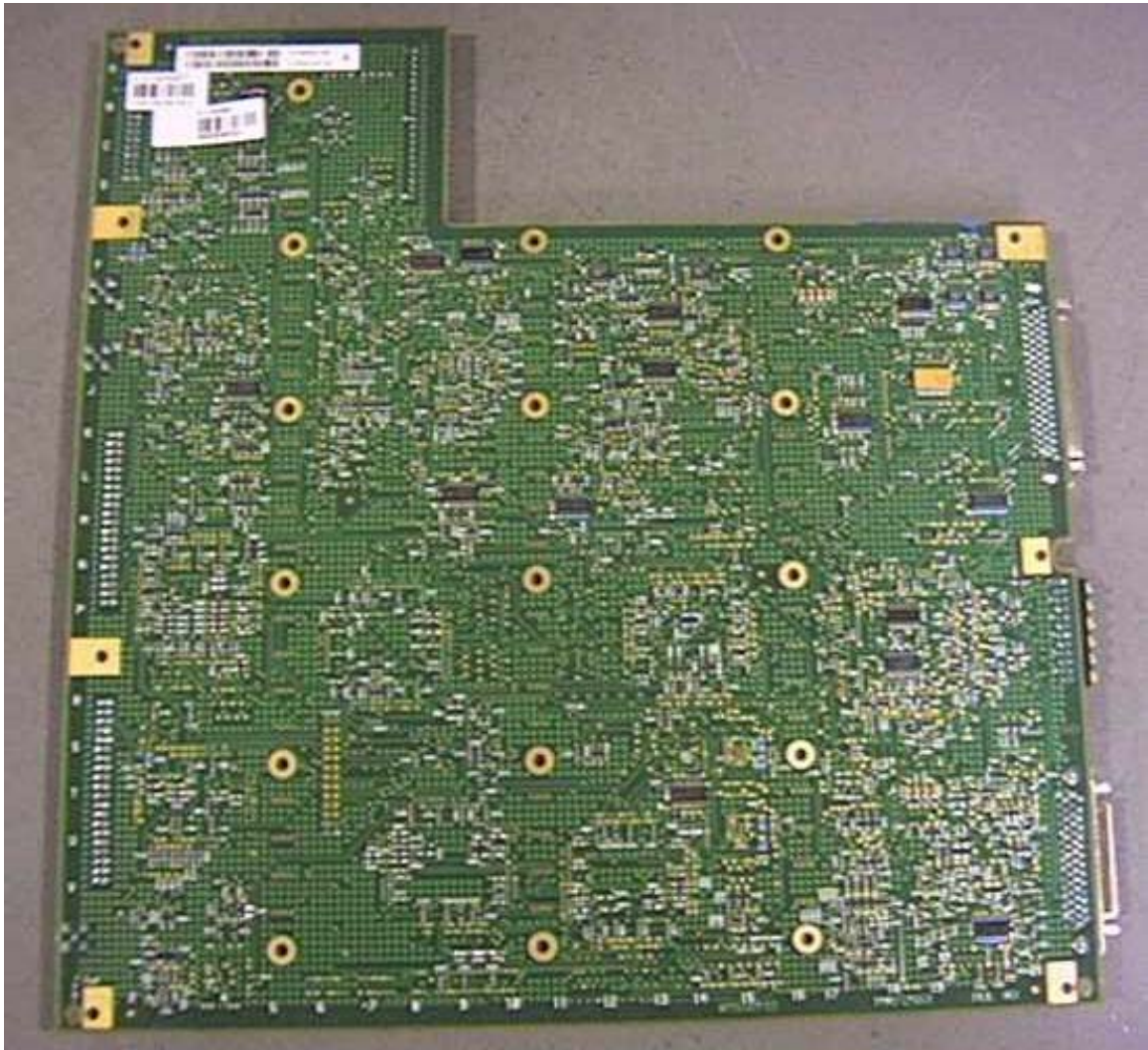


Figure 10 – LDRX 1900 MHz (Logic Board) Bottom View



Figure 11 – RDRX 1900 MHz (Radio Board) Top View

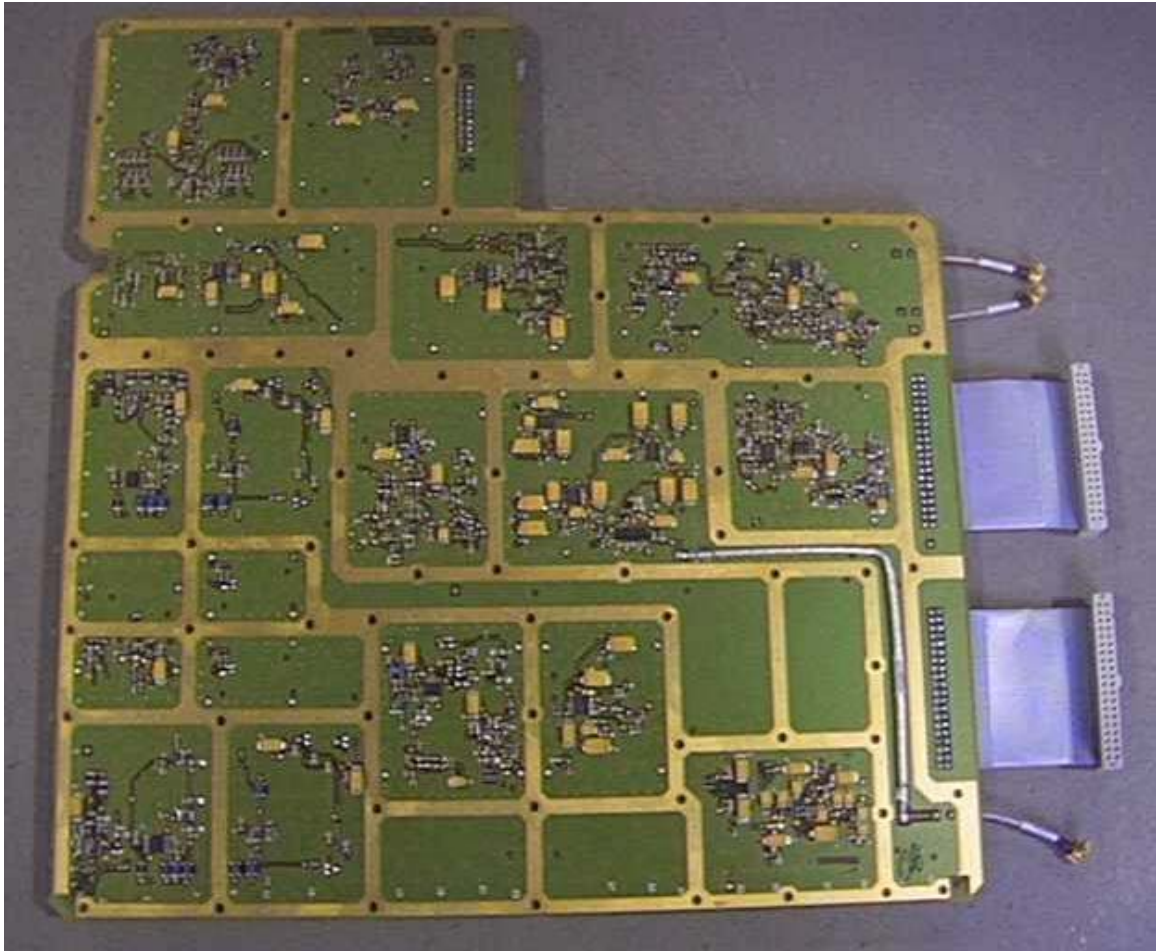


Figure 12 – RDRX 1900 MHz (Radio Board) Bottom View