



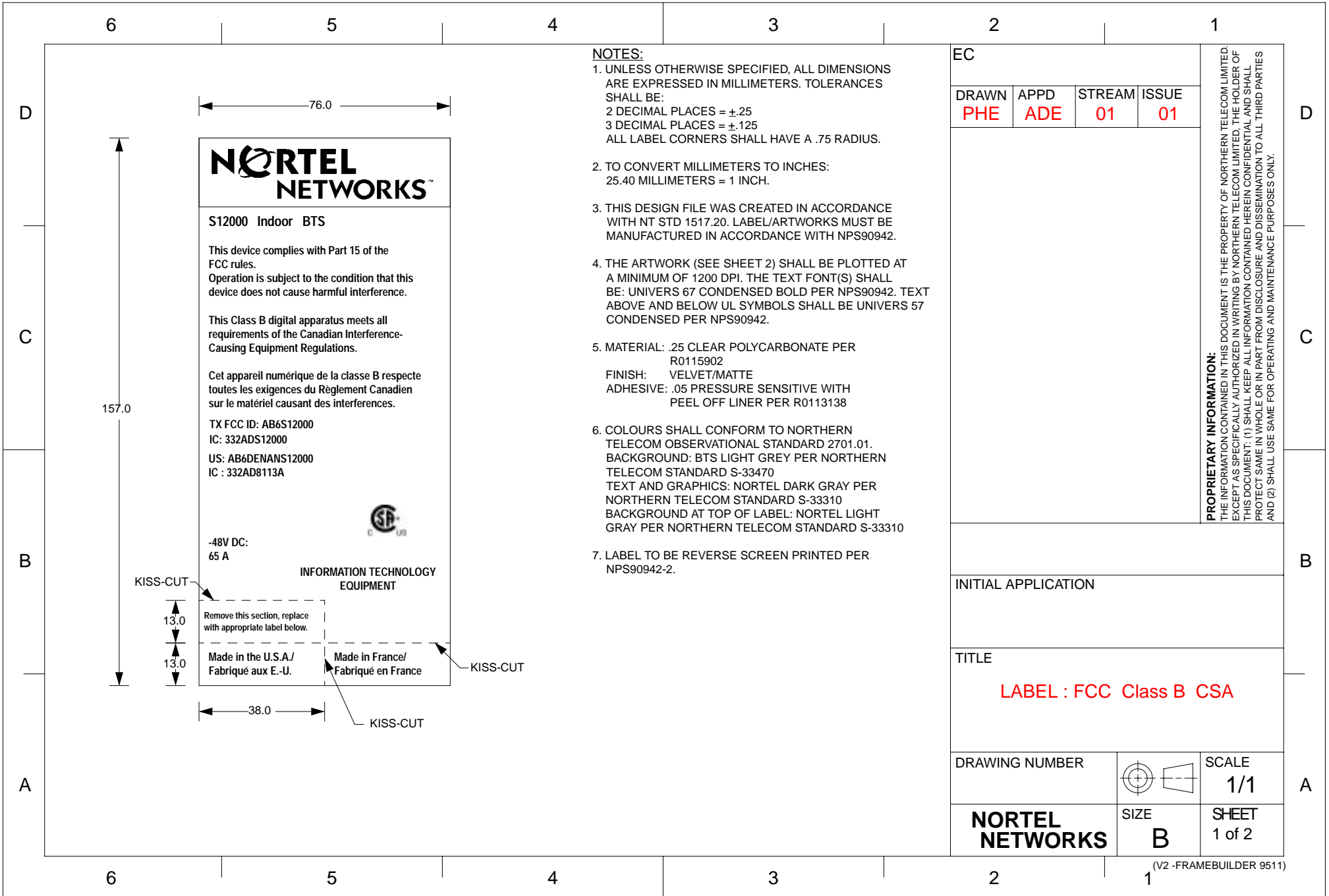
EXHIBIT 3

Transmit Label Photo

Applicant: Northern Telecom Ltd.

For Certification on:

AB6S12000



S12000 Indoor BTS

This device complies with Part 15 of the FCC rules.
Operation is subject to the condition that this device does not cause harmful interference.

This Class B digital apparatus meets all requirements of the Canadian Interference-Causing Equipment Regulations.

Cet appareil numérique de la classe B respecte toutes les exigences du Règlement Canadien sur le matériel causant des interférences.

TX FCC ID: AB6S12000
IC: 332ADS12000
US: AB6DENANS12000
IC : 332AD8113A



-48V DC:
65 A

INFORMATION TECHNOLOGY
EQUIPMENT

KISS-CUT

Remove this section, replace with appropriate label below.

Made in the U.S.A./
Fabriqué aux E.-U.

Made in France/
Fabriqué en France

KISS-CUT

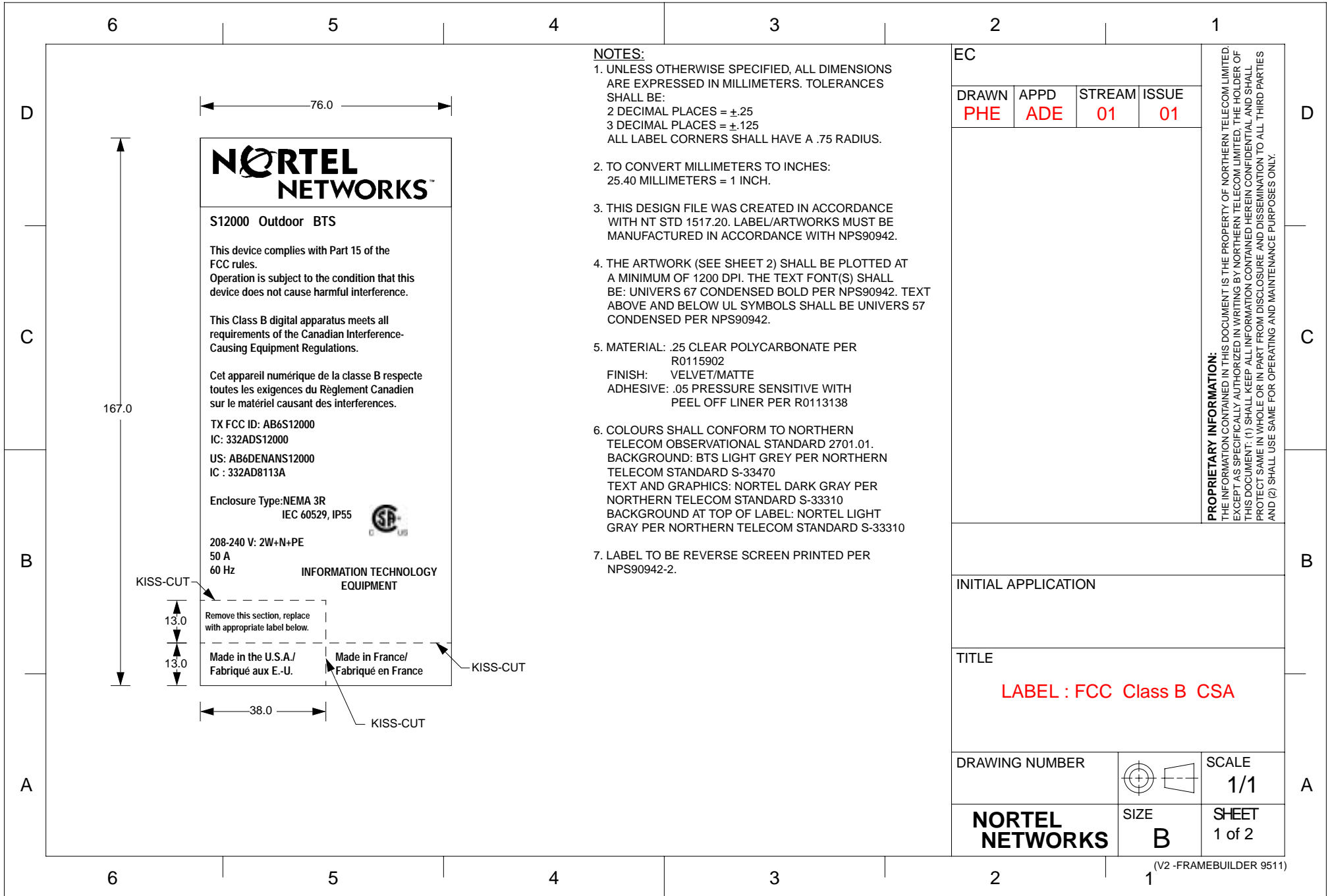
KISS-CUT

NOTES:

- UNLESS OTHERWISE SPECIFIED, ALL DIMENSIONS ARE EXPRESSED IN MILLIMETERS. TOLERANCES SHALL BE:
2 DECIMAL PLACES = ±.25
3 DECIMAL PLACES = ±.125
ALL LABEL CORNERS SHALL HAVE A .75 RADIUS.
- TO CONVERT MILLIMETERS TO INCHES:
25.40 MILLIMETERS = 1 INCH.
- THIS DESIGN FILE WAS CREATED IN ACCORDANCE WITH NT STD 1517.20. LABEL/ARTWORKS MUST BE MANUFACTURED IN ACCORDANCE WITH NPS90942.
- THE ARTWORK (SEE SHEET 2) SHALL BE PLOTTED AT A MINIMUM OF 1200 DPI. THE TEXT FONT(S) SHALL BE: UNIVERS 67 CONDENSED BOLD PER NPS90942. TEXT ABOVE AND BELOW UL SYMBOLS SHALL BE UNIVERS 57 CONDENSED PER NPS90942.
- MATERIAL: .25 CLEAR POLYCARBONATE PER R0115902
FINISH: VELVET/MATTE
ADHESIVE: .05 PRESSURE SENSITIVE WITH PEEL OFF LINER PER R0113138
- COLOURS SHALL CONFORM TO NORTHERN TELECOM OBSERVATIONAL STANDARD 2701.01.
BACKGROUND: BTS LIGHT GREY PER NORTHERN TELECOM STANDARD S-33470
TEXT AND GRAPHICS: NORTEL DARK GRAY PER NORTHERN TELECOM STANDARD S-33310
BACKGROUND AT TOP OF LABEL: NORTEL LIGHT GRAY PER NORTHERN TELECOM STANDARD S-33310
- LABEL TO BE REVERSE SCREEN PRINTED PER NPS90942-2.

EC			
DRAWN PHE	APPD ADE	STREAM 01	ISSUE 01
INITIAL APPLICATION			
TITLE LABEL : FCC Class B CSA			
DRAWING NUMBER			SCALE 1/1
NORTEL NETWORKS			SIZE B

PROPRIETARY INFORMATION:
 THE INFORMATION CONTAINED IN THIS DOCUMENT IS THE PROPERTY OF NORTHERN TELECOM LIMITED. THE HOLDER OF THIS DOCUMENT IS SPECIFICALLY AUTHORIZED IN WRITING BY NORTHERN TELECOM LIMITED. THE HOLDER OF THIS DOCUMENT: (1) SHALL KEEP ALL INFORMATION CONTAINED HEREIN CONFIDENTIAL AND SHALL PROTECT SAME IN WHOLE OR IN PART FROM DISCLOSURE AND DISSEMINATION TO ALL THIRD PARTIES AND (2) SHALL USE SAME FOR OPERATING AND MAINTENANCE PURPOSES ONLY.



S12000 Outdoor BTS

This device complies with Part 15 of the FCC rules.
Operation is subject to the condition that this device does not cause harmful interference.

This Class B digital apparatus meets all requirements of the Canadian Interference-Causing Equipment Regulations.

Cet appareil numérique de la classe B respecte toutes les exigences du Règlement Canadien sur le matériel causant des interférences.

TX FCC ID: AB6S12000
IC: 332ADS12000
US: AB6DENANS12000
IC : 332AD8113A

Enclosure Type: NEMA 3R
IEC 60529, IP55



208-240 V: 2W+N+PE
50 A
60 Hz

INFORMATION TECHNOLOGY
EQUIPMENT

KISS-CUT

Remove this section, replace with appropriate label below.

Made in the U.S.A./
Fabriqué aux E.-U.

Made in France/
Fabriqué en France

KISS-CUT

38.0

KISS-CUT

NOTES:

- UNLESS OTHERWISE SPECIFIED, ALL DIMENSIONS ARE EXPRESSED IN MILLIMETERS. TOLERANCES SHALL BE:
2 DECIMAL PLACES = ±.25
3 DECIMAL PLACES = ±.125
ALL LABEL CORNERS SHALL HAVE A .75 RADIUS.
- TO CONVERT MILLIMETERS TO INCHES:
25.40 MILLIMETERS = 1 INCH.
- THIS DESIGN FILE WAS CREATED IN ACCORDANCE WITH NT STD 1517.20. LABEL/ARTWORKS MUST BE MANUFACTURED IN ACCORDANCE WITH NPS90942.
- THE ARTWORK (SEE SHEET 2) SHALL BE PLOTTED AT A MINIMUM OF 1200 DPI. THE TEXT FONT(S) SHALL BE: UNIVERS 67 CONDENSED BOLD PER NPS90942. TEXT ABOVE AND BELOW UL SYMBOLS SHALL BE UNIVERS 57 CONDENSED PER NPS90942.
- MATERIAL: .25 CLEAR POLYCARBONATE PER R0115902
FINISH: VELVET/MATTE
ADHESIVE: .05 PRESSURE SENSITIVE WITH PEEL OFF LINER PER R0113138
- COLOURS SHALL CONFORM TO NORTHERN TELECOM OBSERVATIONAL STANDARD 2701.01.
BACKGROUND: BTS LIGHT GREY PER NORTHERN TELECOM STANDARD S-33470
TEXT AND GRAPHICS: NORTEL DARK GRAY PER NORTHERN TELECOM STANDARD S-33310
BACKGROUND AT TOP OF LABEL: NORTEL LIGHT GRAY PER NORTHERN TELECOM STANDARD S-33310
- LABEL TO BE REVERSE SCREEN PRINTED PER NPS90942-2.

EC			
DRAWN PHE	APPD ADE	STREAM 01	ISSUE 01
<p>PROPRIETARY INFORMATION: THE INFORMATION CONTAINED IN THIS DOCUMENT IS THE PROPERTY OF NORTHERN TELECOM LIMITED. EXCEPT AS SPECIFICALLY AUTHORIZED IN WRITING BY NORTHERN TELECOM LIMITED, THE HOLDER OF THIS DOCUMENT: (1) SHALL KEEP ALL INFORMATION CONTAINED HEREIN CONFIDENTIAL AND SHALL PROTECT SAME IN WHOLE OR IN PART FROM DISCLOSURE AND DISSEMINATION TO ALL THIRD PARTIES AND (2) SHALL USE SAME FOR OPERATING AND MAINTENANCE PURPOSES ONLY.</p>			
INITIAL APPLICATION			
TITLE LABEL : FCC Class B CSA			
DRAWING NUMBER			SCALE 1/1
NORTEL NETWORKS	SIZE B	SHEET 1 of 2	