

Photo #3 Front view of Picocell with plastic cover removed (antenna at the bottom right)

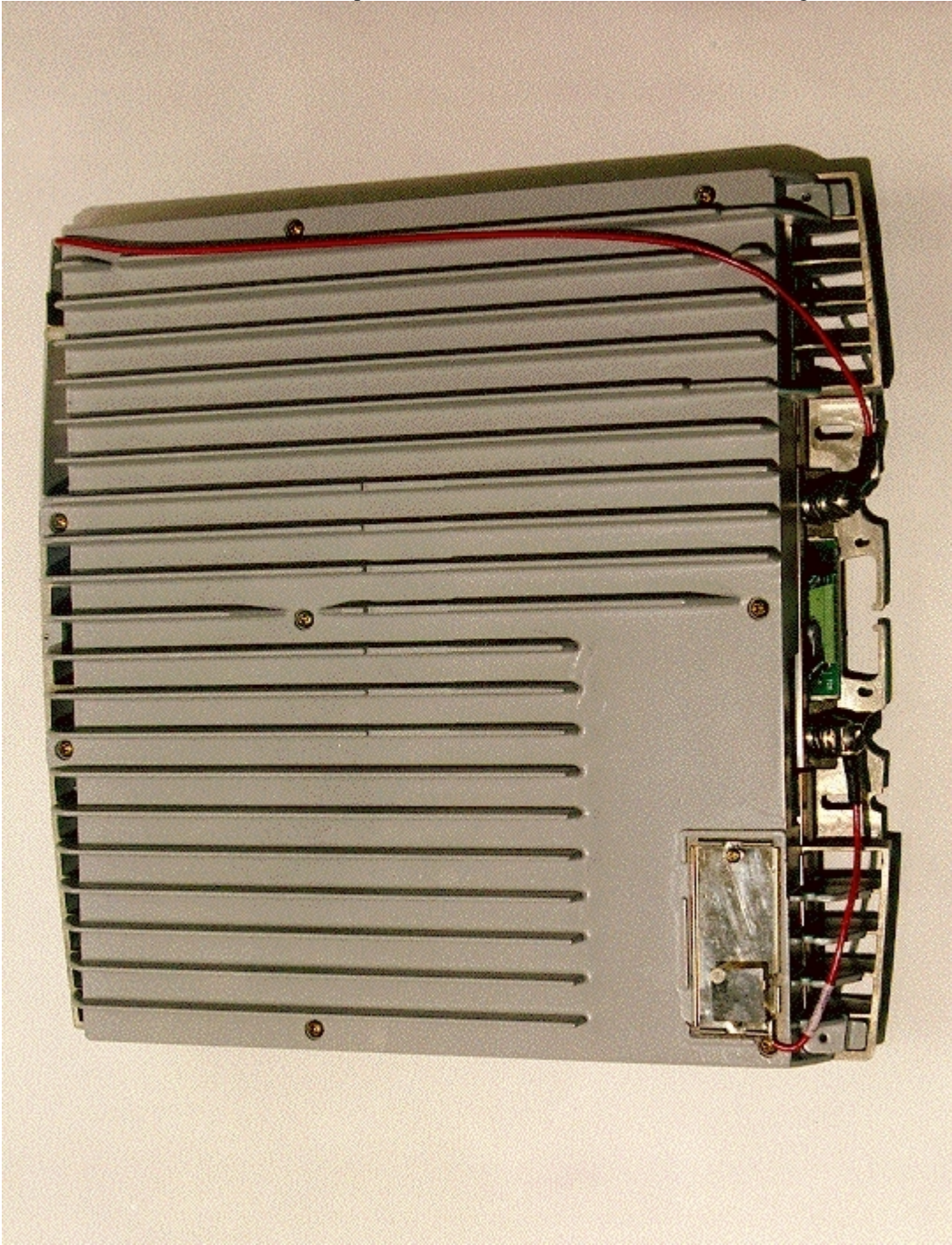


Photo #4 Front shield cover removed exposing 2 digital PCBs

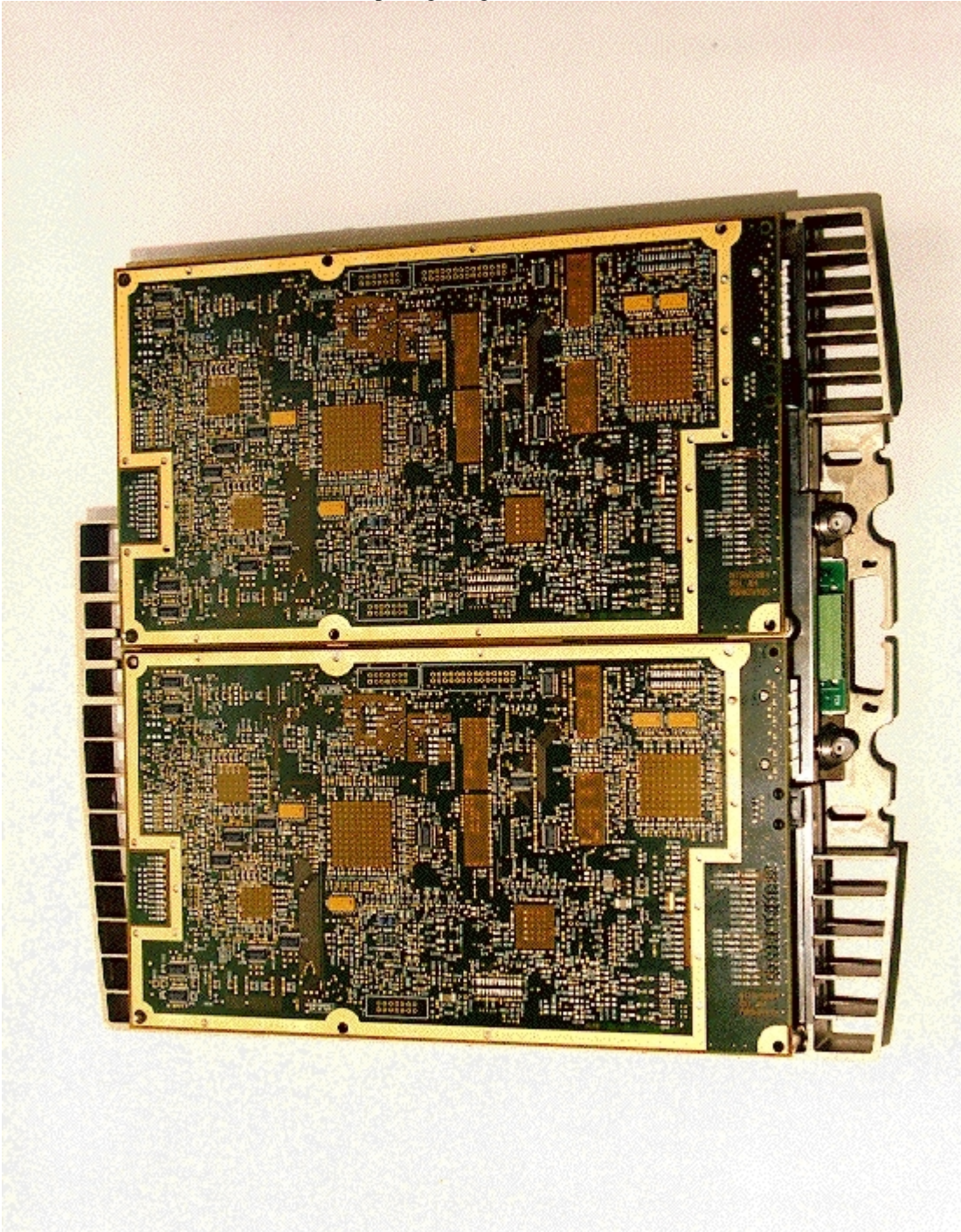


Photo #5 Shield that separates the digital PCBs from the radio PCB

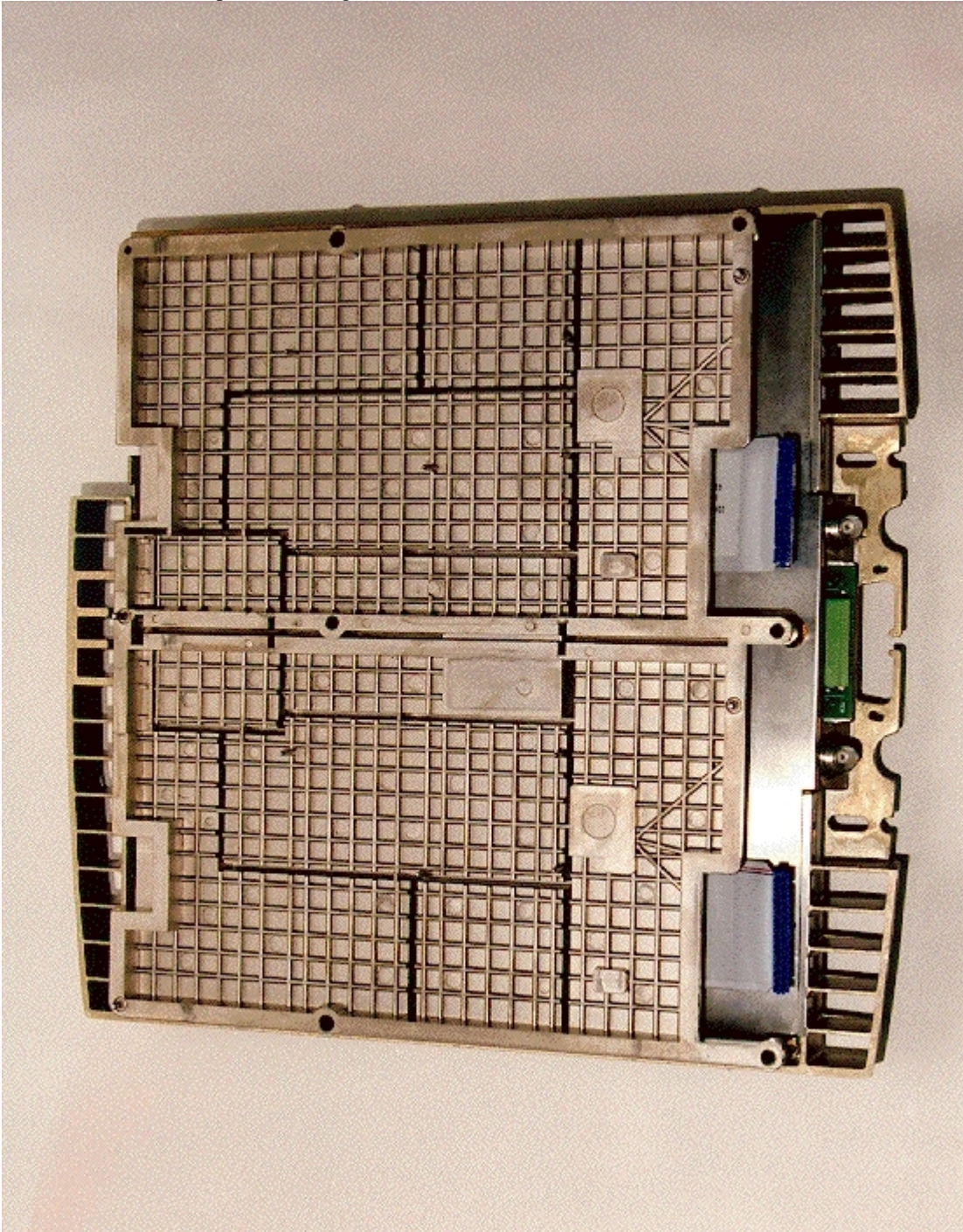


Photo #6 Radio PCB and shield that covers PSU/interconnect PCB

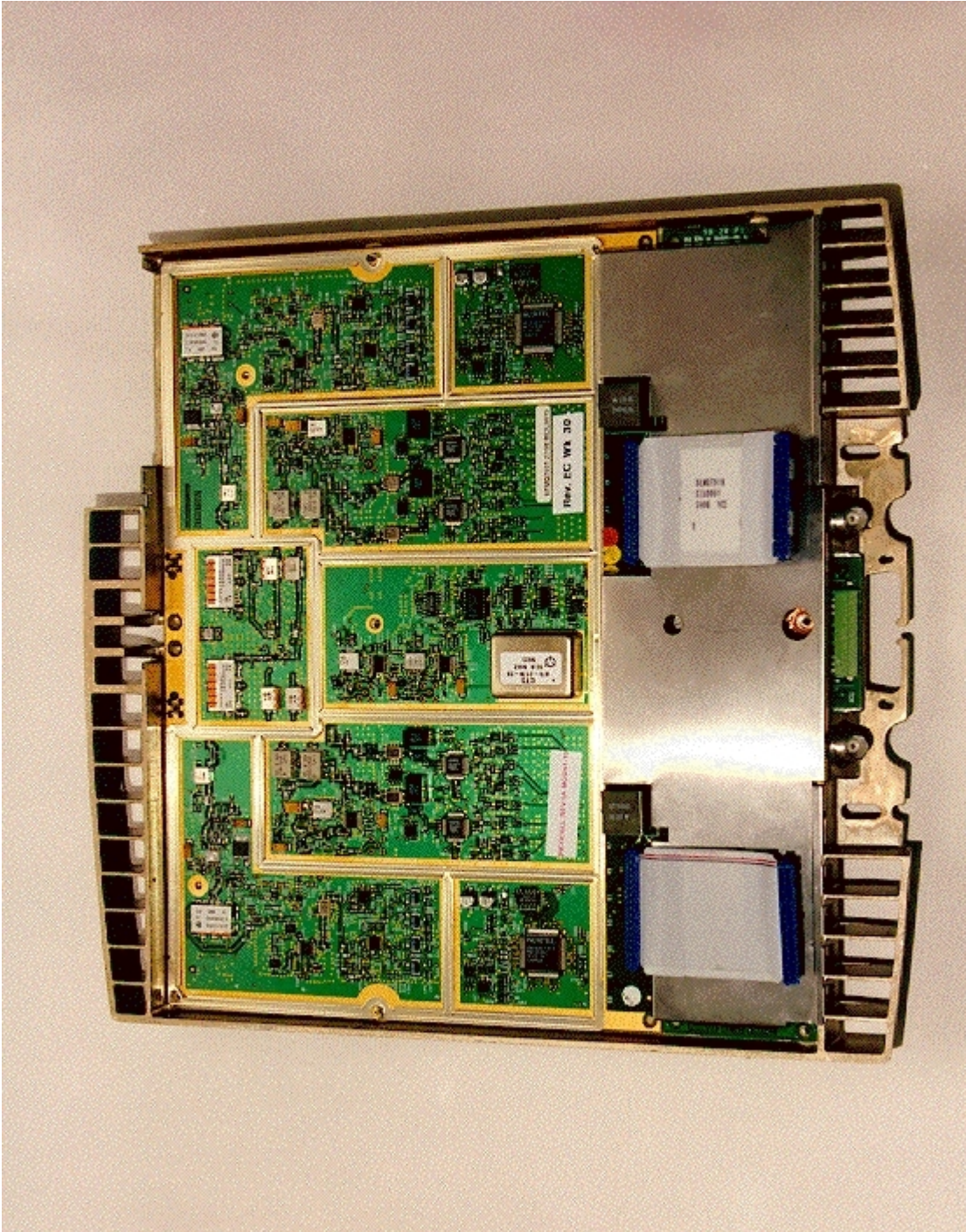


Photo #7 Radio PCB and PSU/interconnect PCB

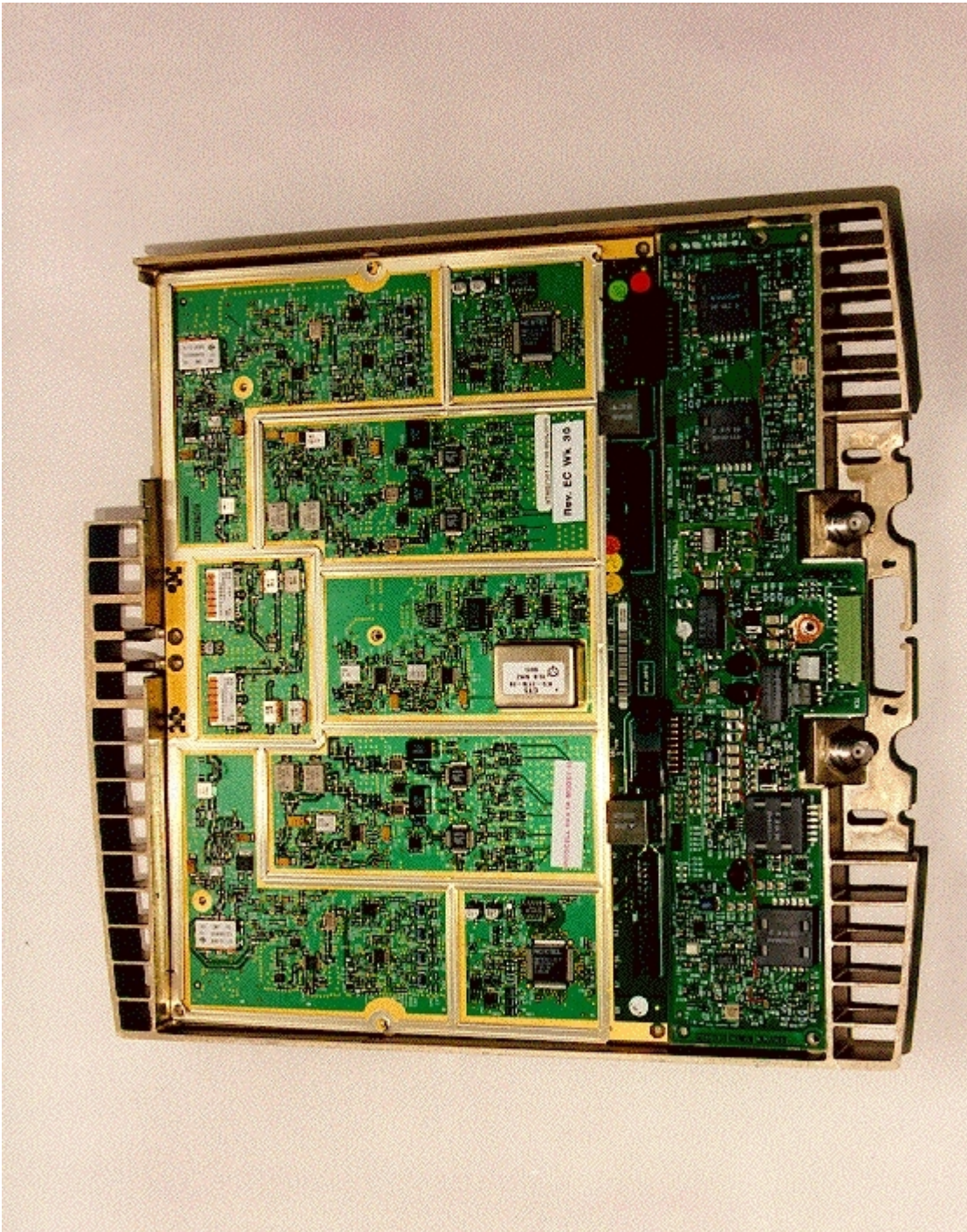


Photo #8 Back side of Radio PCB and PSU/interconnect

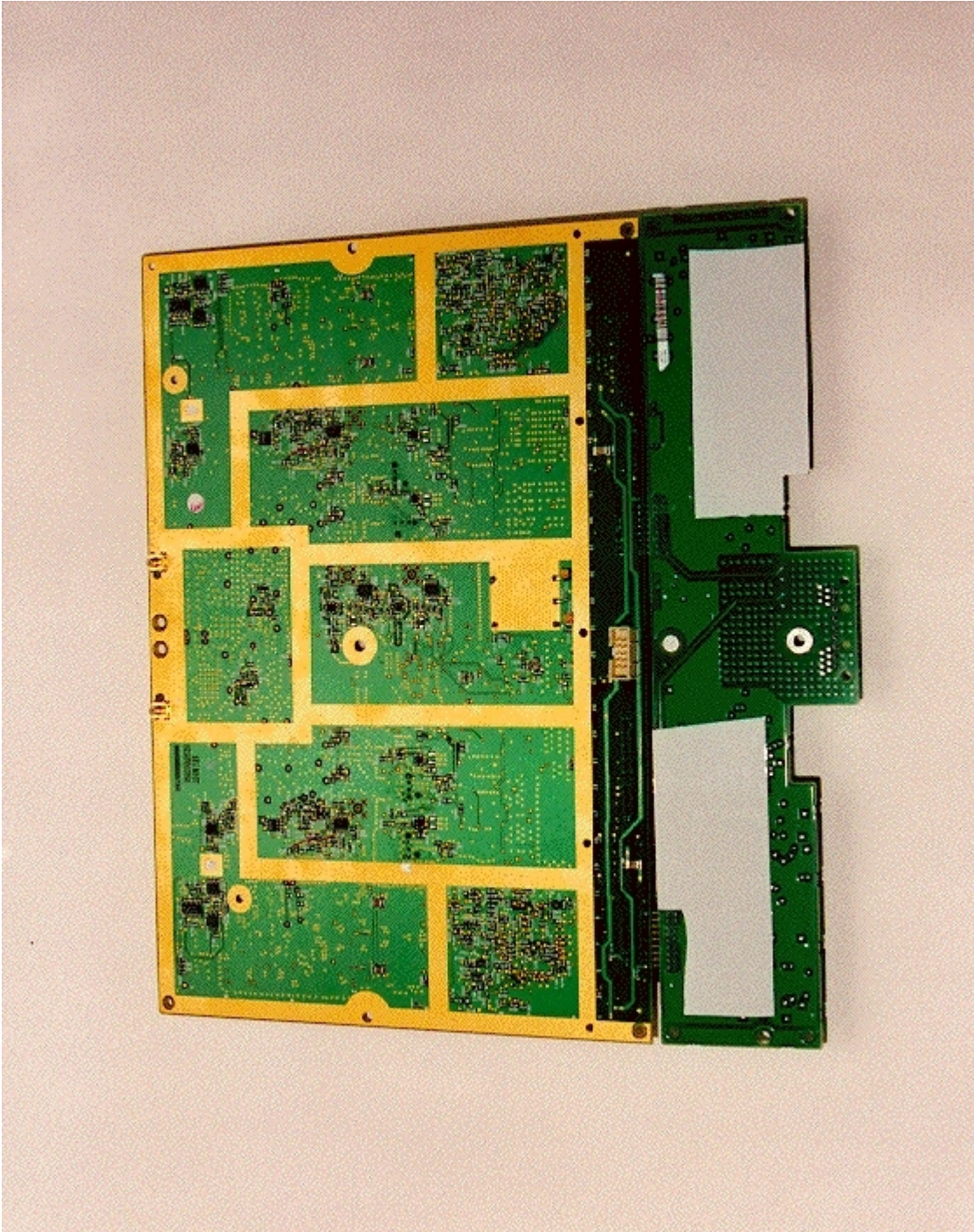


Photo #9 Internal view of the back shield

