



EXHIBIT 7

Test Setup Photos

Applicant: Nortel Networks

**For Class II Permissive
Change on :**

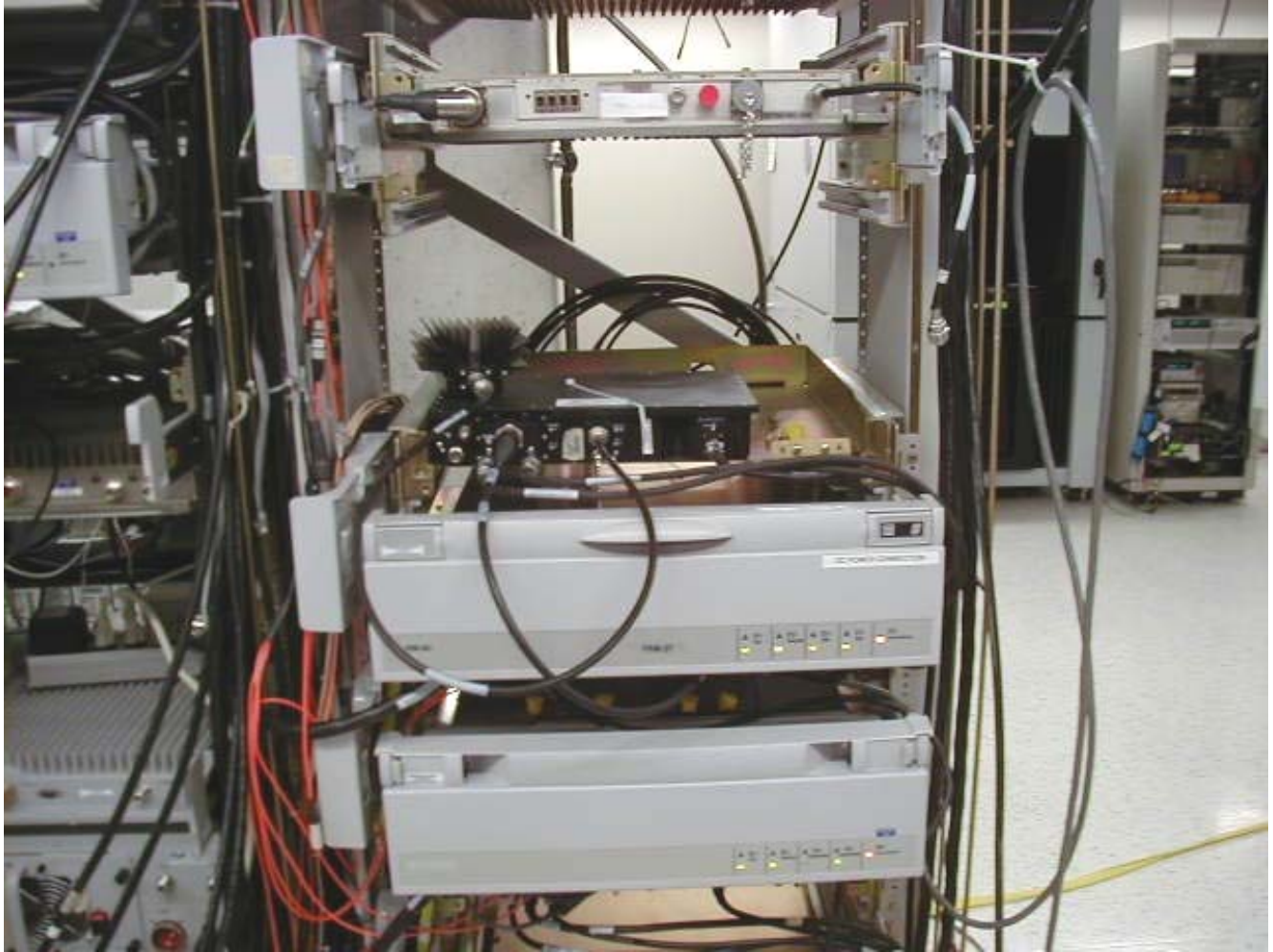
FCC: AB6NT800MFRM2-CG

IC: 332D-800MFRM2



**Test setup for the
Spurious Emission at Antenna Terminals**

This document contains Proprietary information of Nortel Networks. This information is considered to be confidential and should be treated appropriately.



**Radio setup for the
Spurious Emission at Antenna Terminals**

This document contains Proprietary information of Nortel Networks. This information is considered to be confidential and should be treated appropriately.