



# **EXHIBIT 7**

## **Test Setup Photos**

**Applicant: Nortel Networks**

**For Class II Permissive  
Change on :**

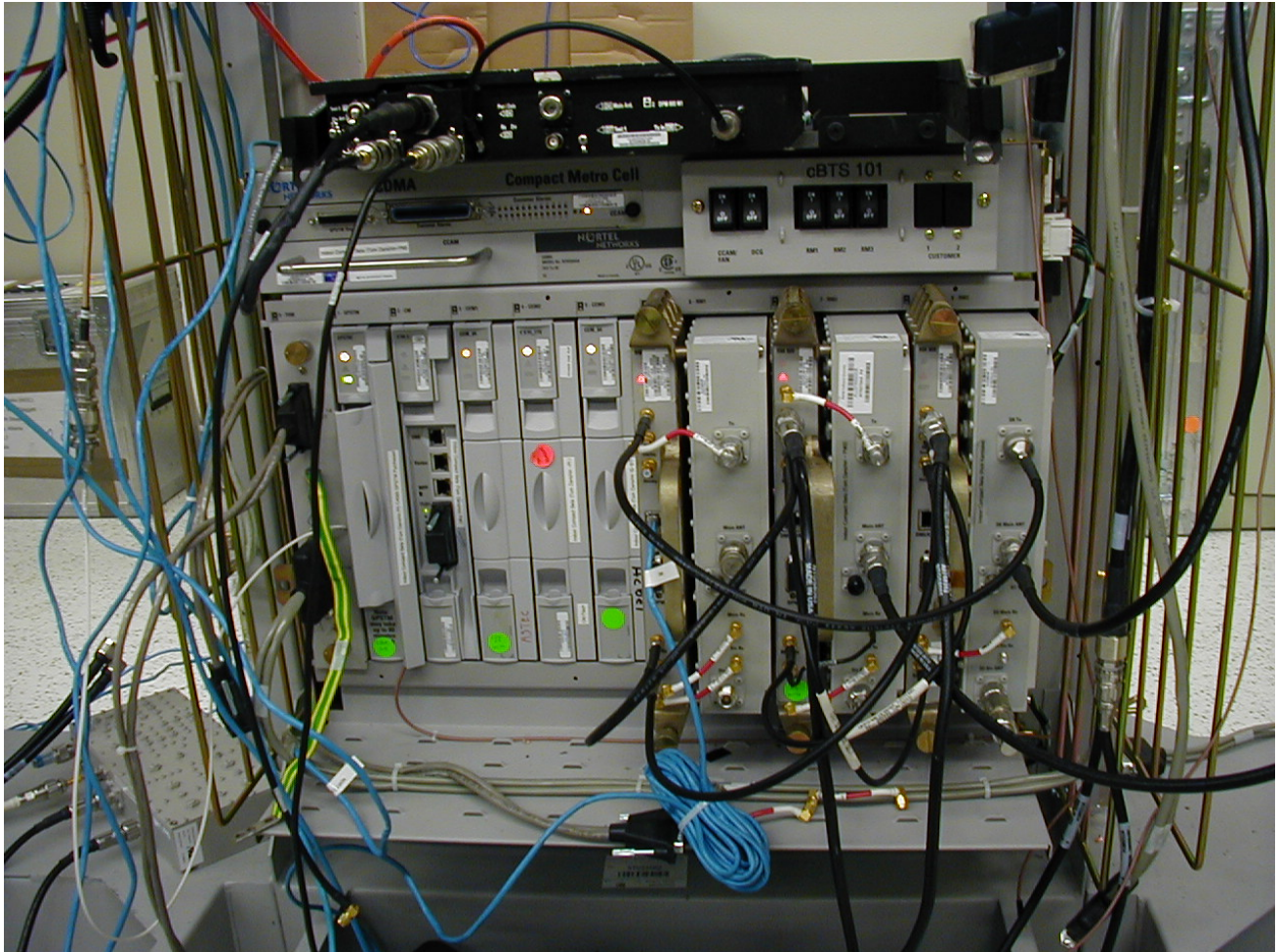
**FCC: AB6NT1900RM-CBTS**

**IC: 332D-CBS1G9RM**



**Test setup for the  
Spurious Emission at Antenna Terminals**

This document contains Proprietary information of Nortel Networks. This information is considered to be confidential and should be treated appropriately.



**Radio setup for the  
Spurious Emission at Antenna Terminals**

This document contains Proprietary information of Nortel Networks. This information is considered to be confidential and should be treated appropriately.