



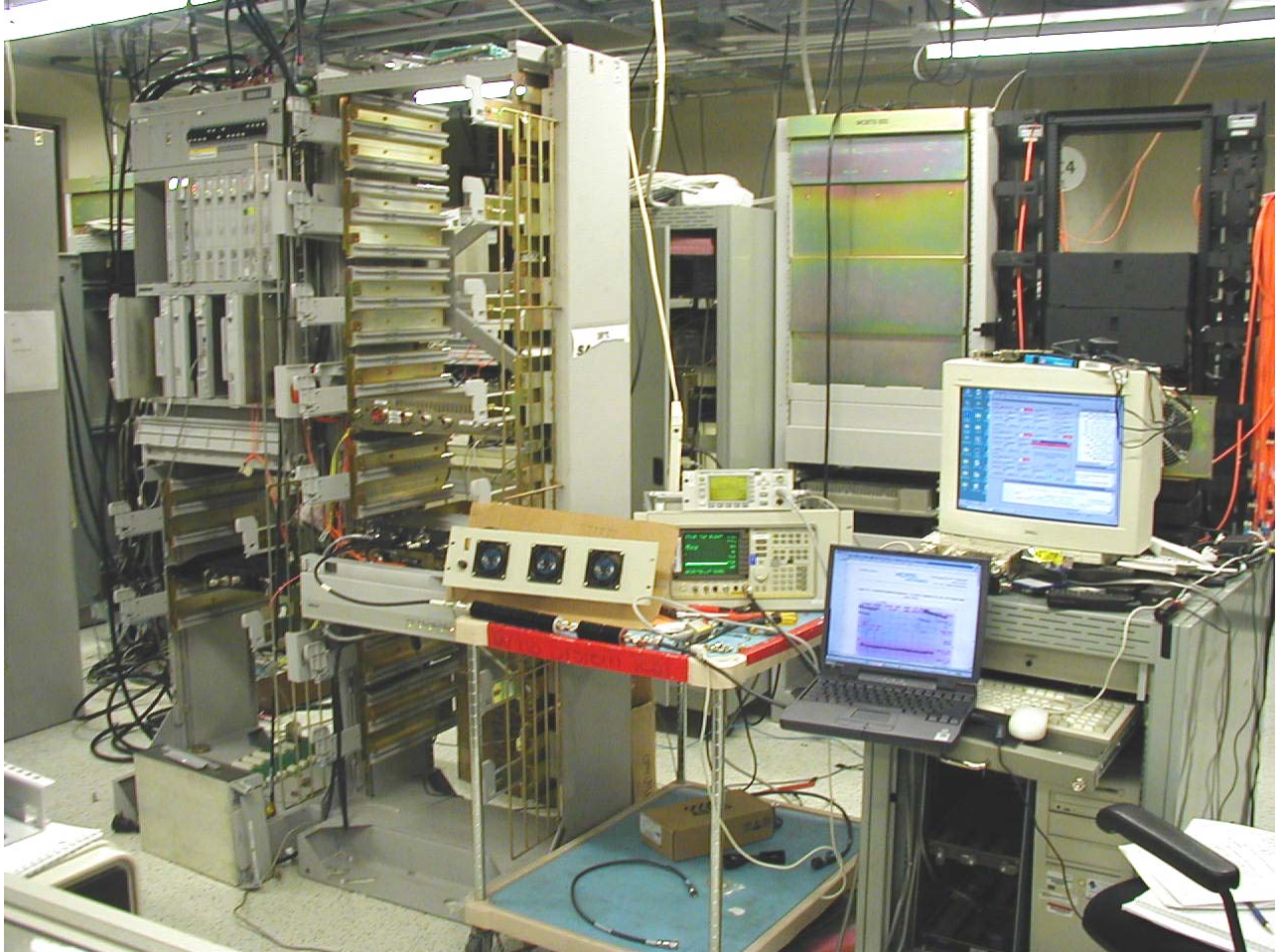
EXHIBIT 11

Test Setup Photos

Applicant: Nortel Networks

**For Class II Permissive
Change on:**

AB6NT1900MFRM2



**Test setup for the
Spurious Emission at Antenna Terminals**

This document contains Proprietary information of Nortel Networks. This information is considered to be confidential and should be treated appropriately.



**Test setup for the
Radiated Emission**

This document contains Proprietary information of Nortel Networks. This information is considered to be confidential and should be treated appropriately.