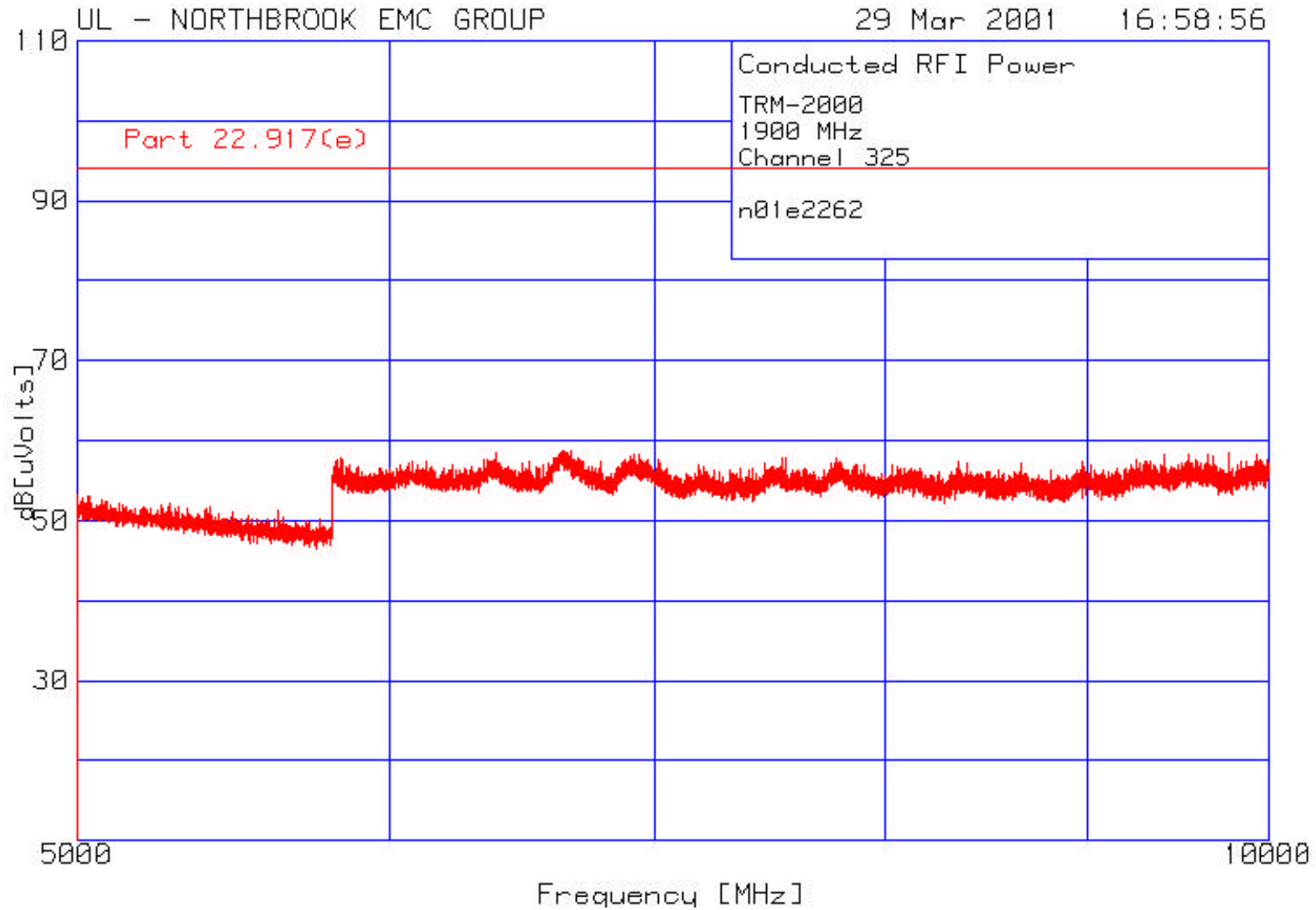
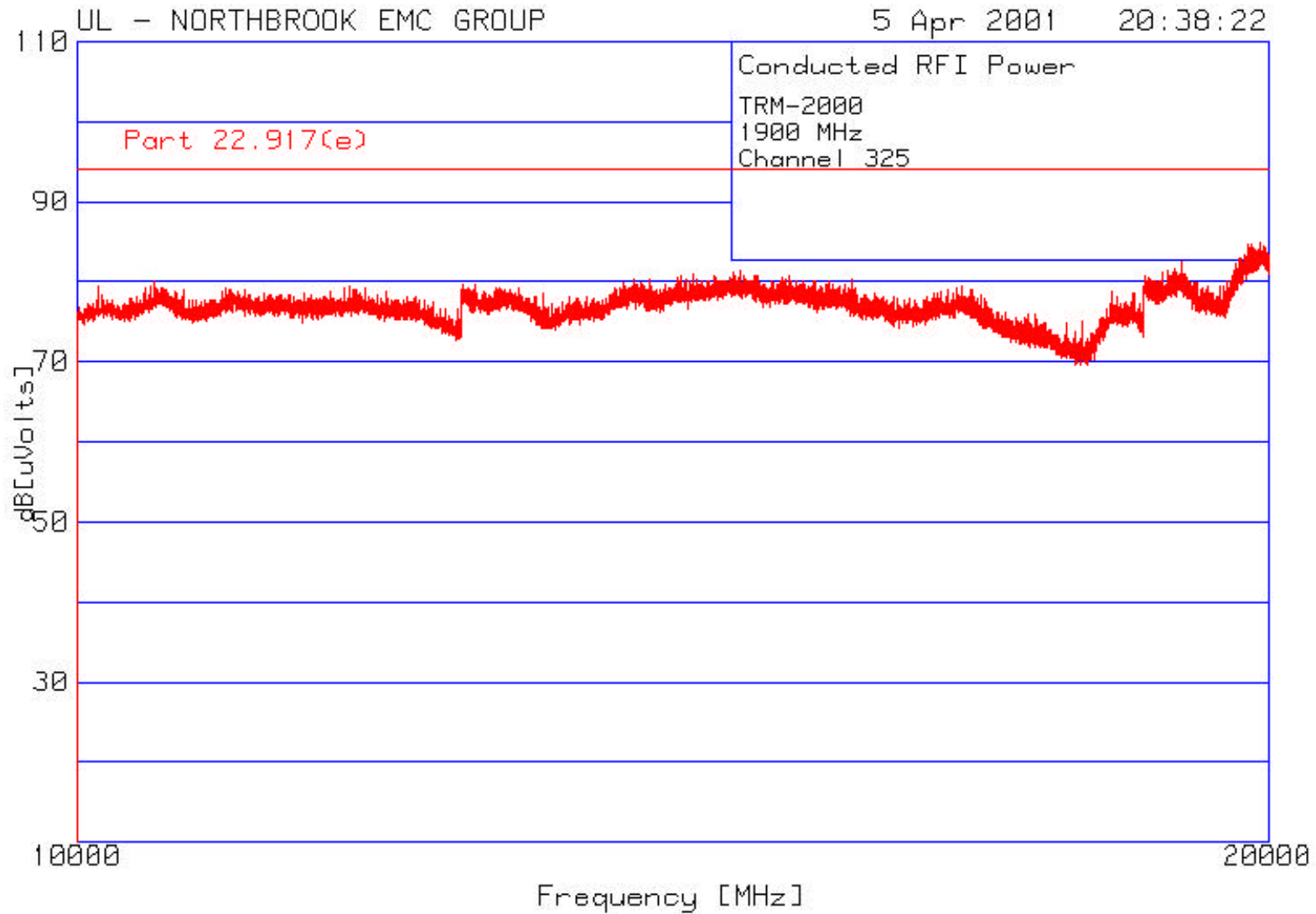


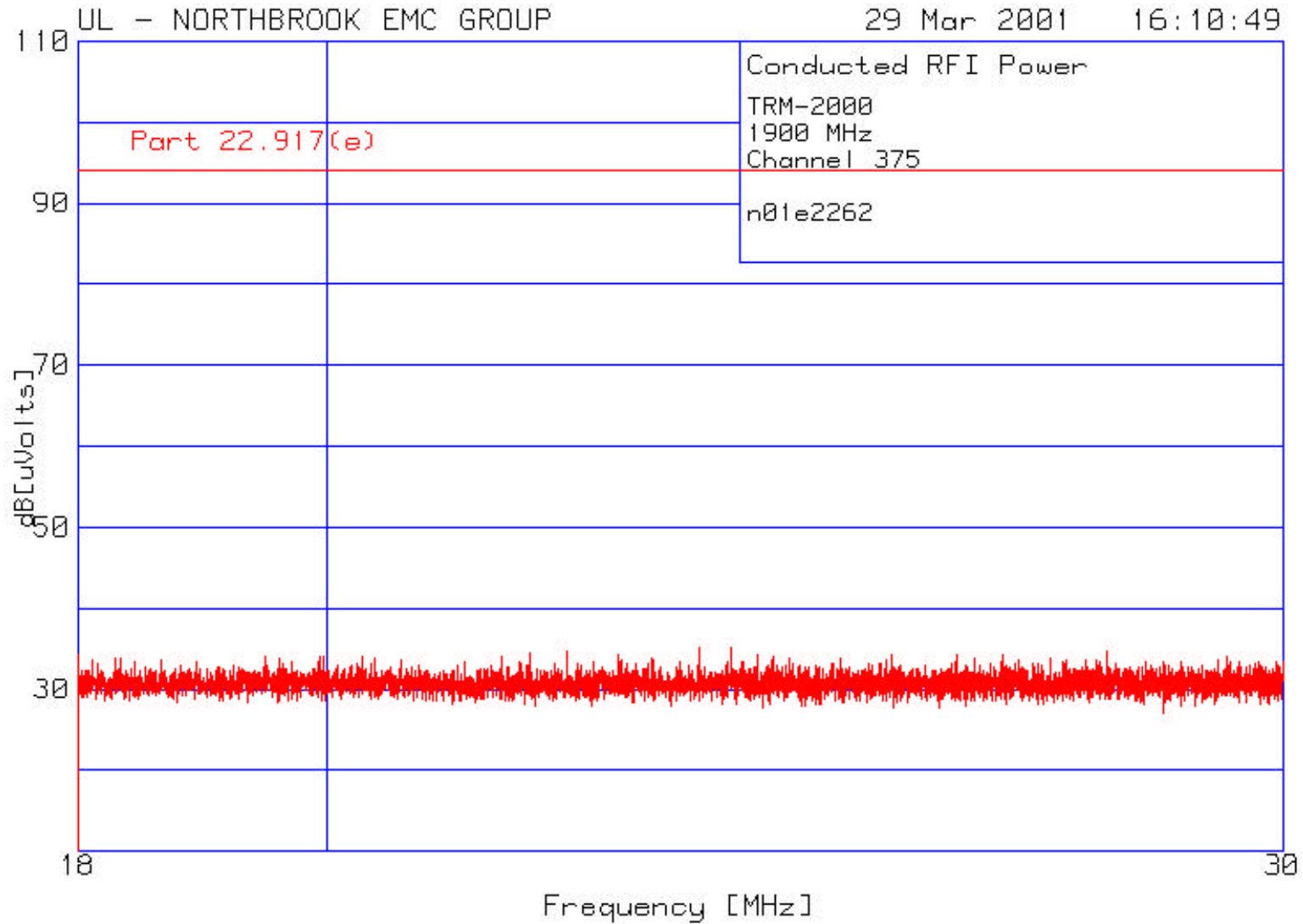
Spurious Emissions at Antenna Terminals
Channel 0325
5 to 10 GHz



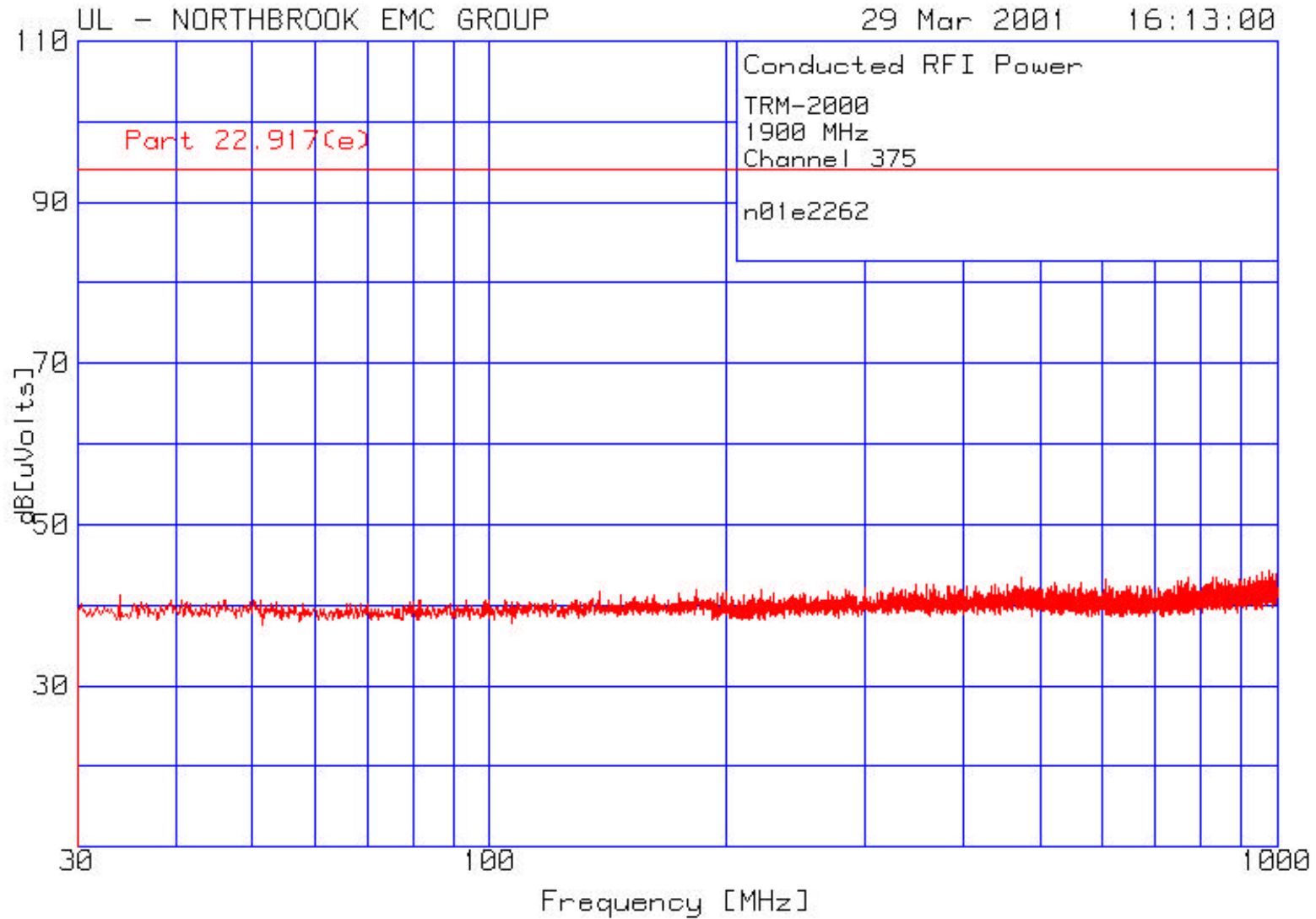
Spurious Emissions at Antenna Terminals
Channel 0325
10 to 20 GHz



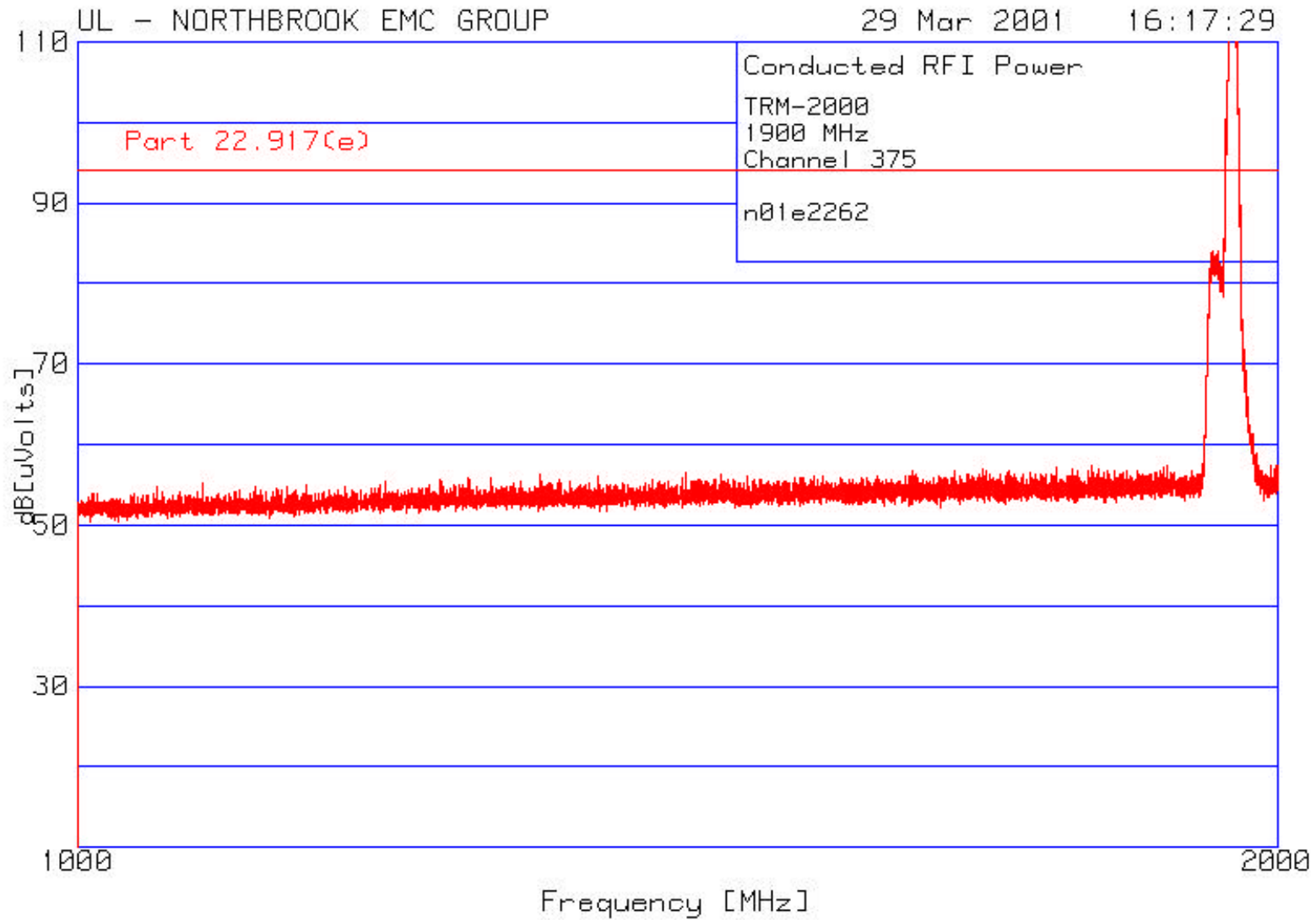
Spurious Emissions at Antenna Terminals
Channel 0375
18 to 30 MHz



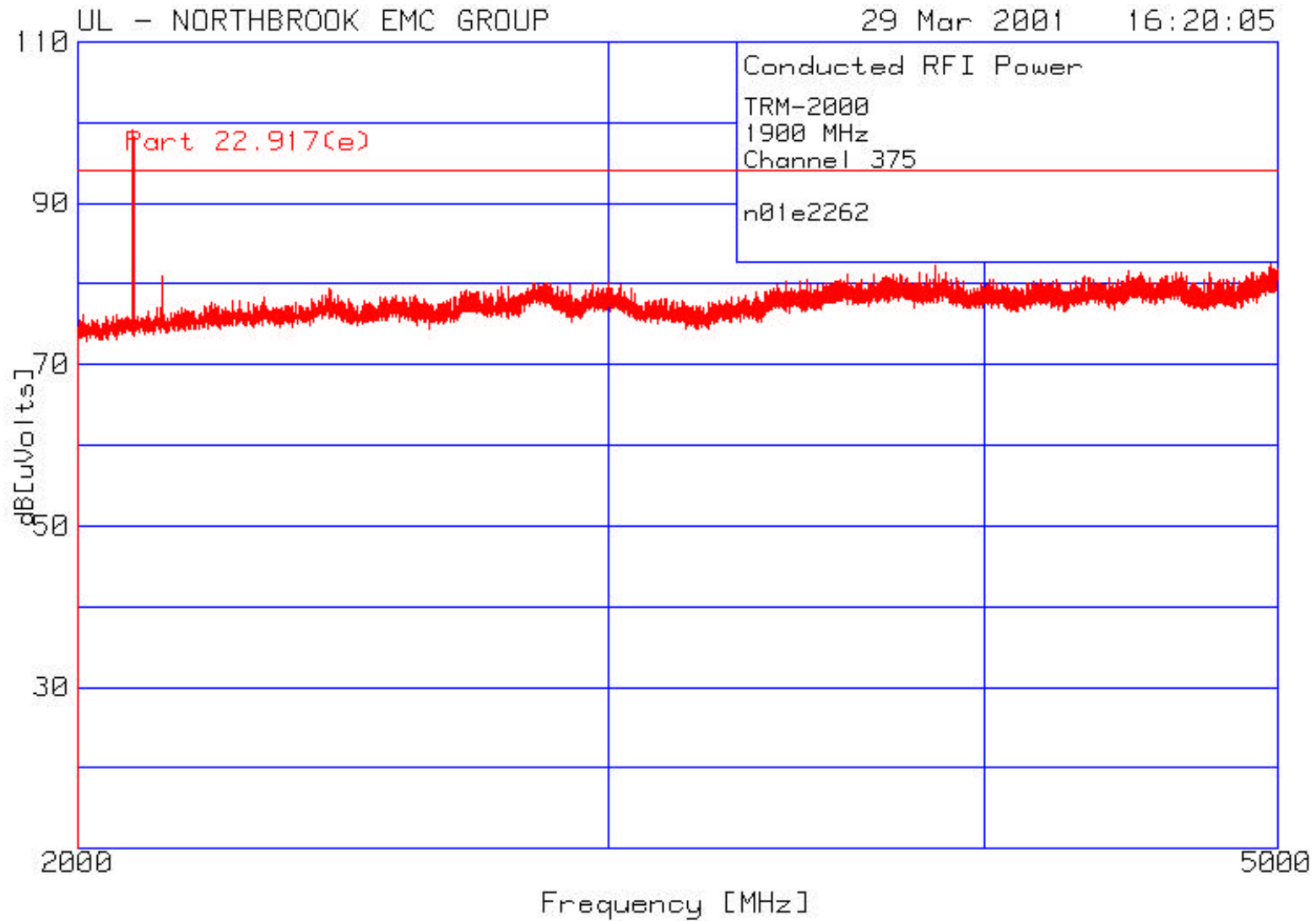
Spurious Emissions at Antenna Terminals
Channel 0375
30 MHz to 1 GHz



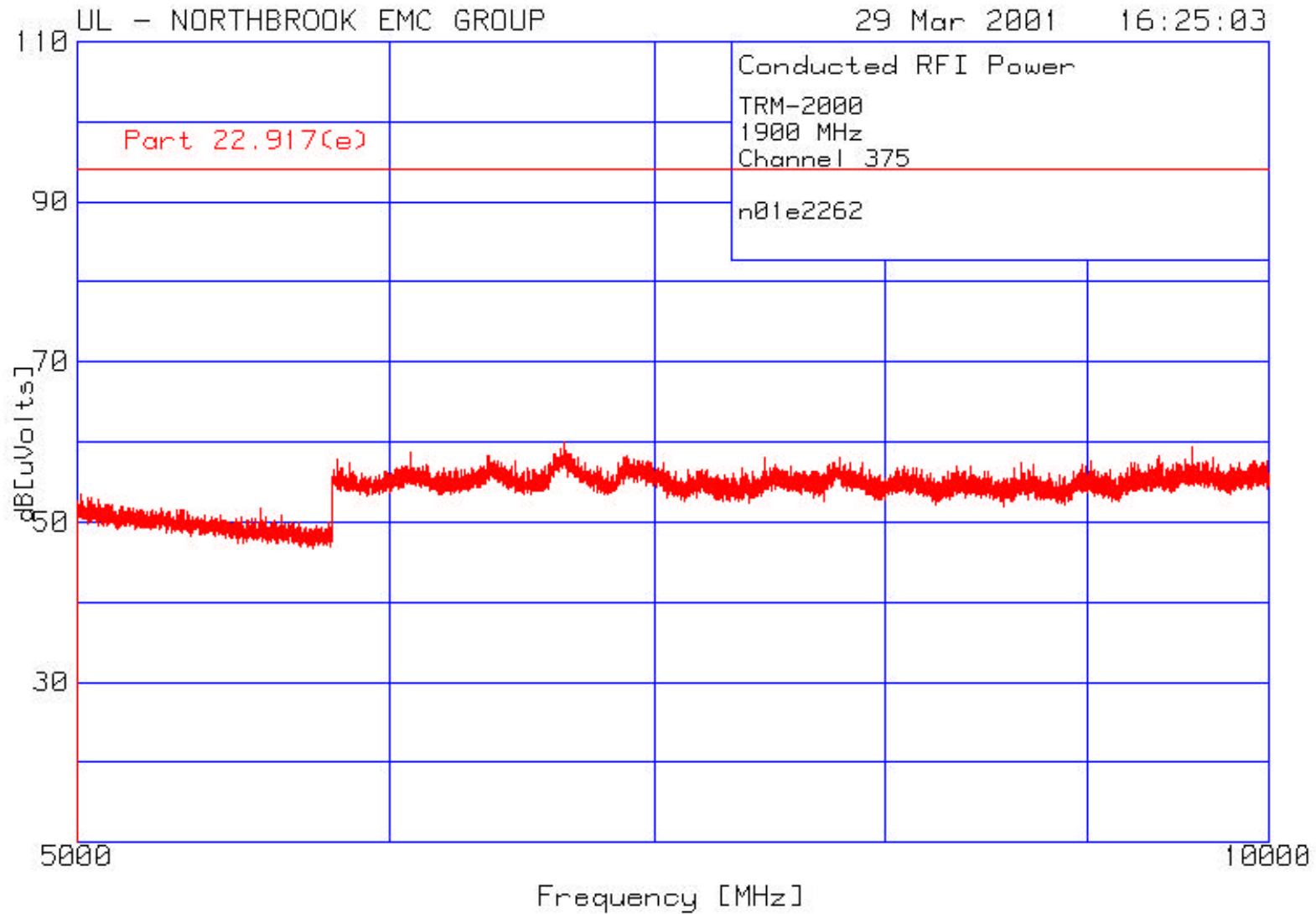
Spurious Emissions at Antenna Terminals
Channel 0375
1 to 2 GHz



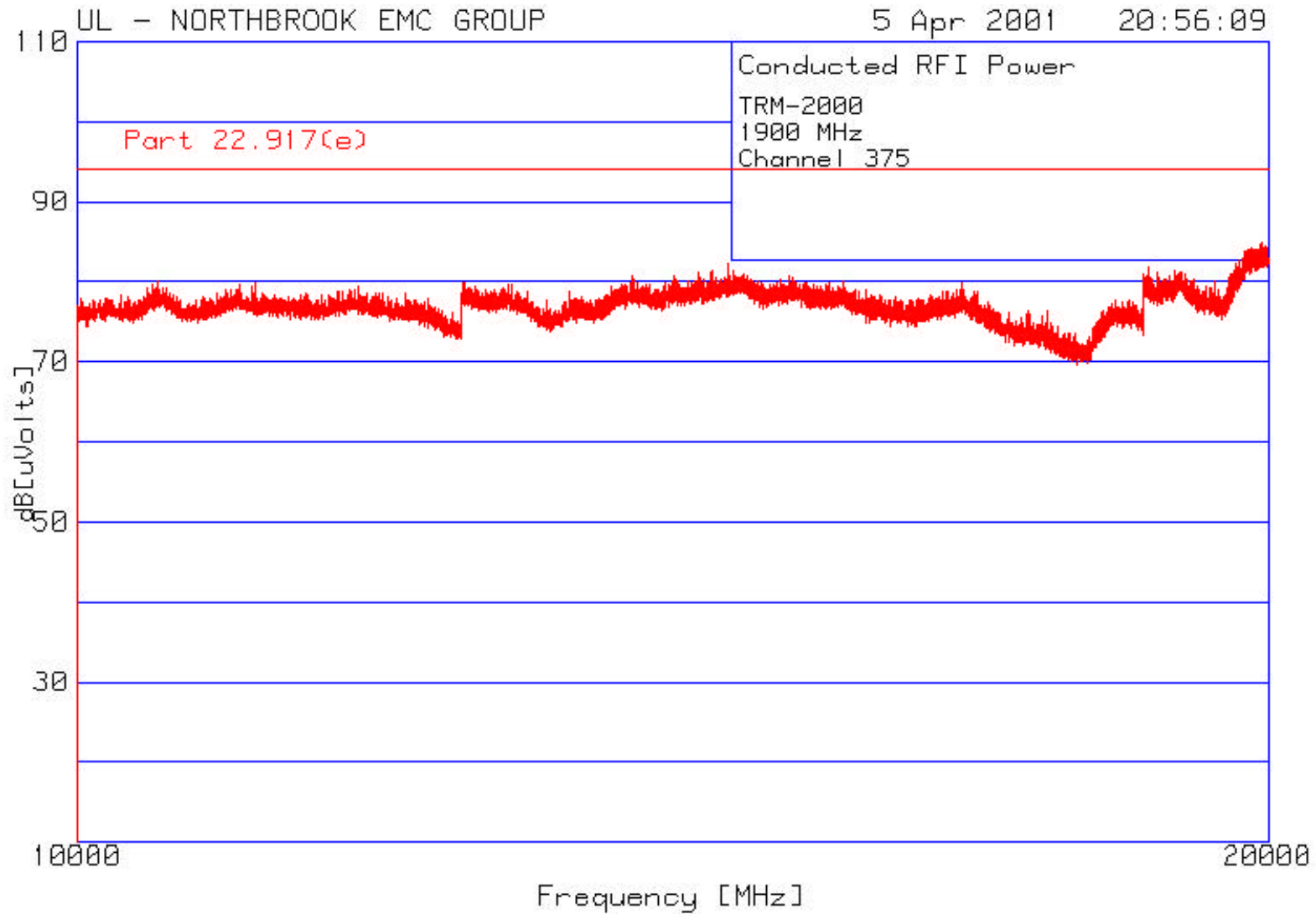
Spurious Emissions at Antenna Terminals
Channel 0375
2 to 5 GHz



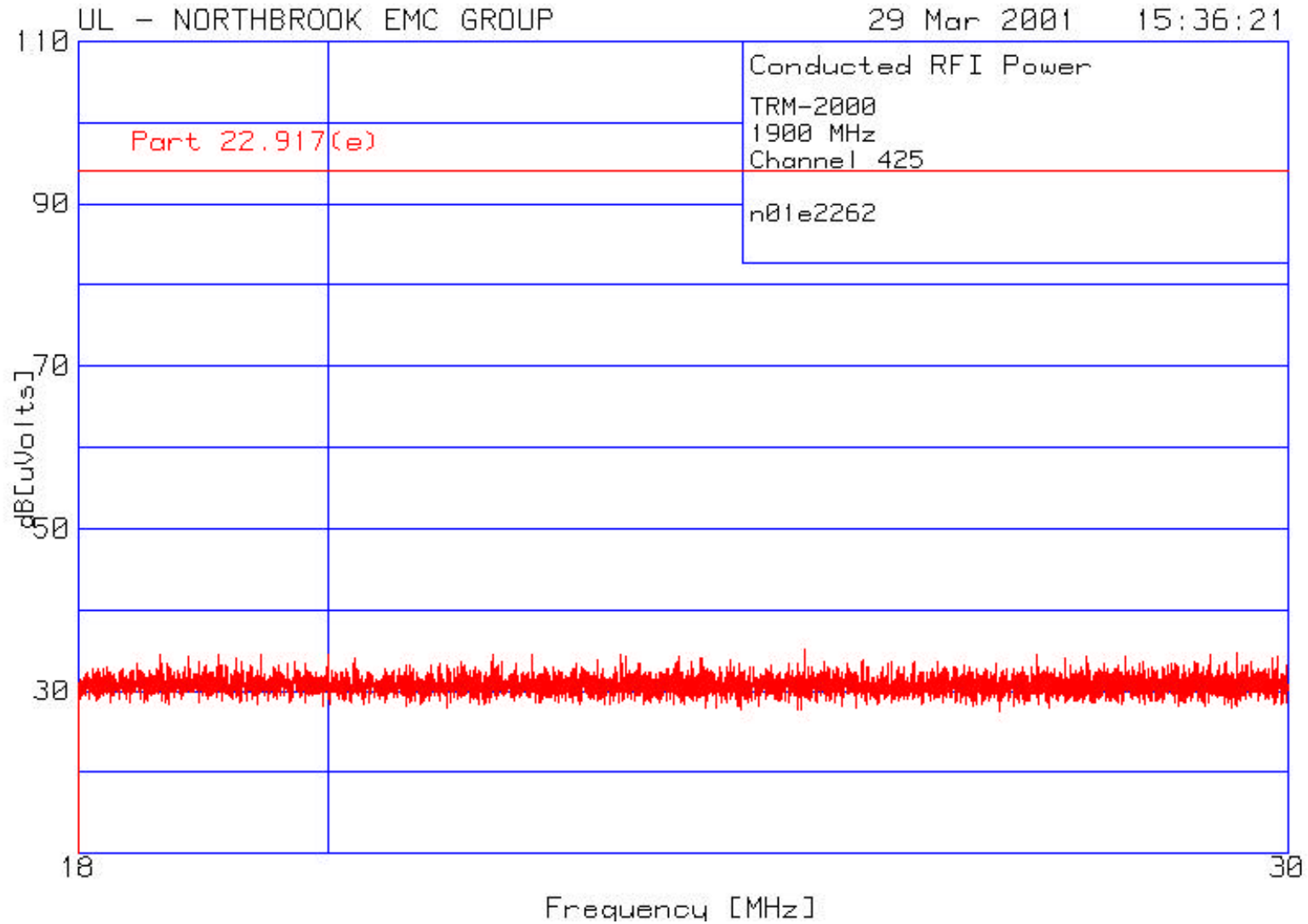
Spurious Emissions at Antenna Terminals
Channel 0375
5 to 10 GHz



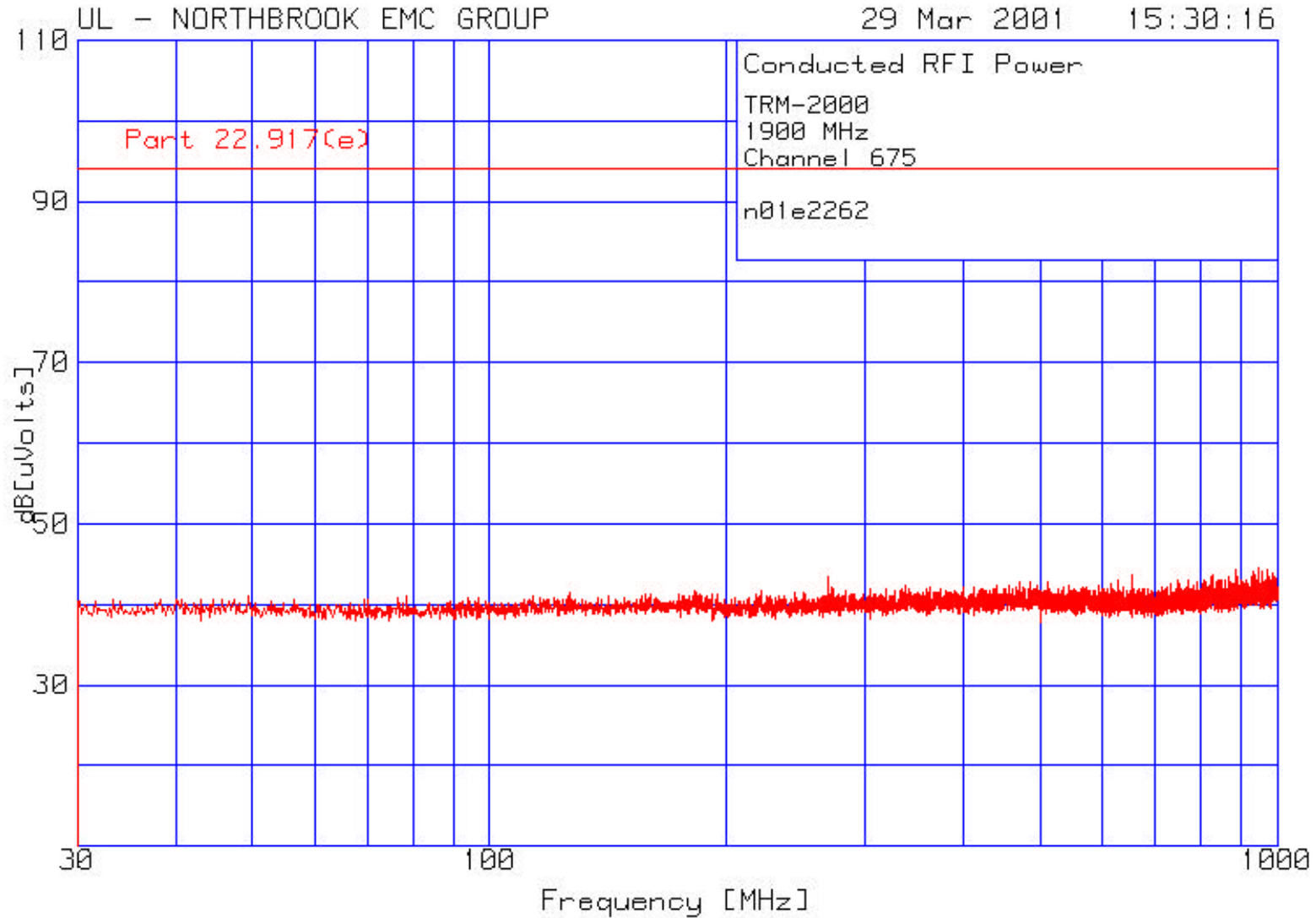
Spurious Emissions at Antenna Terminals
Channel 0375
10 to 20 GHz



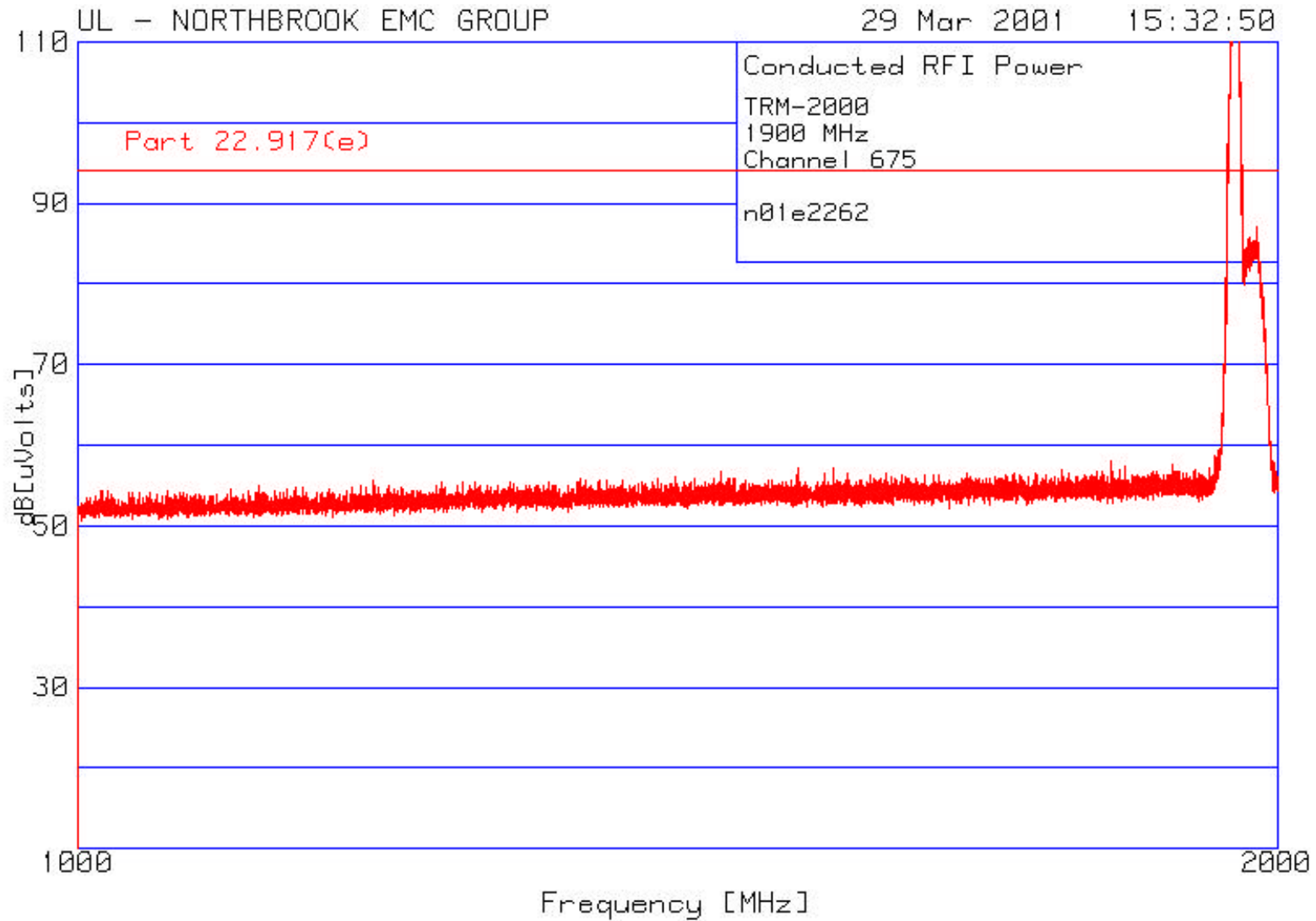
Spurious Emissions at Antenna Terminals
Channel 0425
18 to 30 MHz



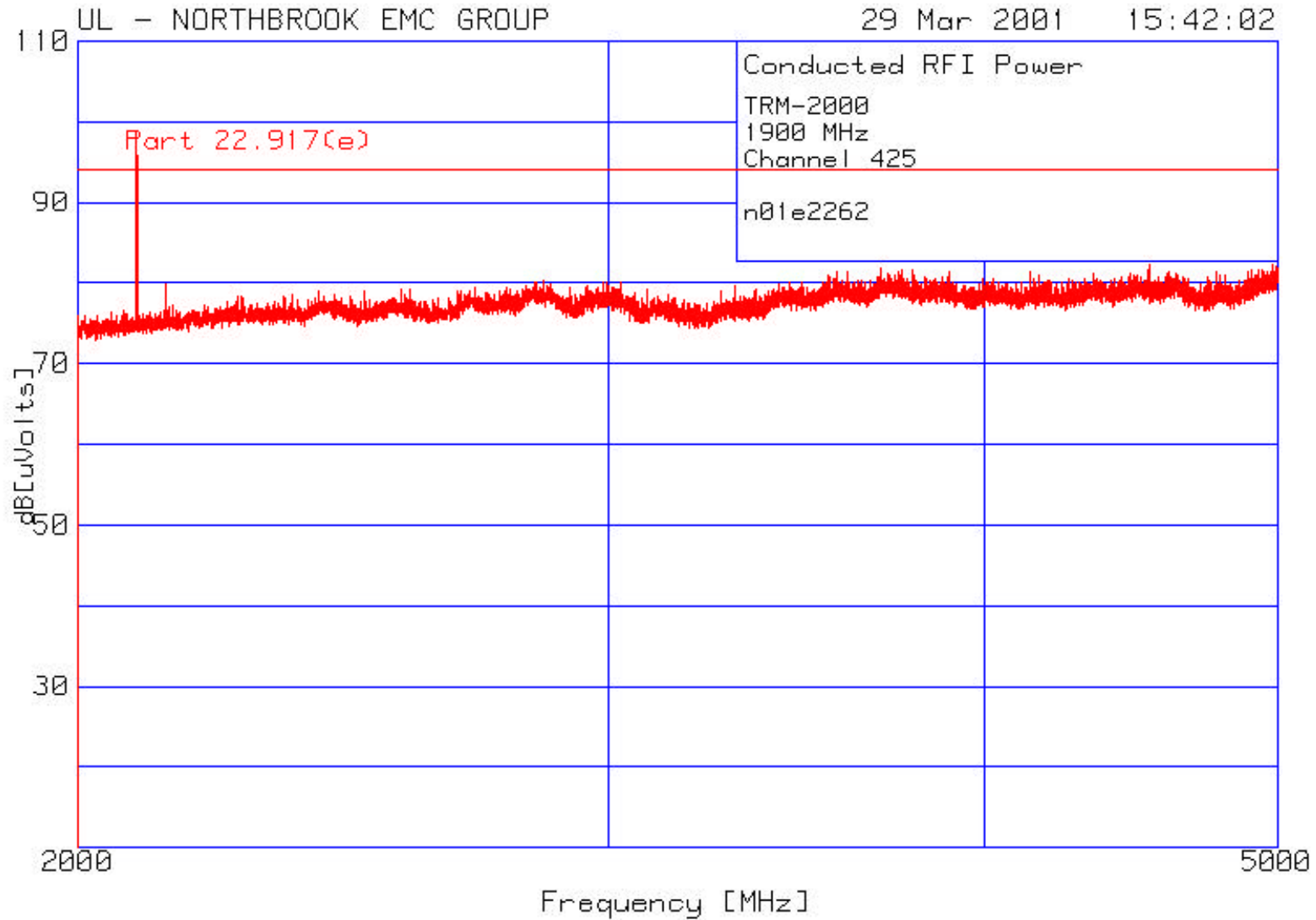
Spurious Emissions at Antenna Terminals
Channel 0425
30 MHz to 1 GHz



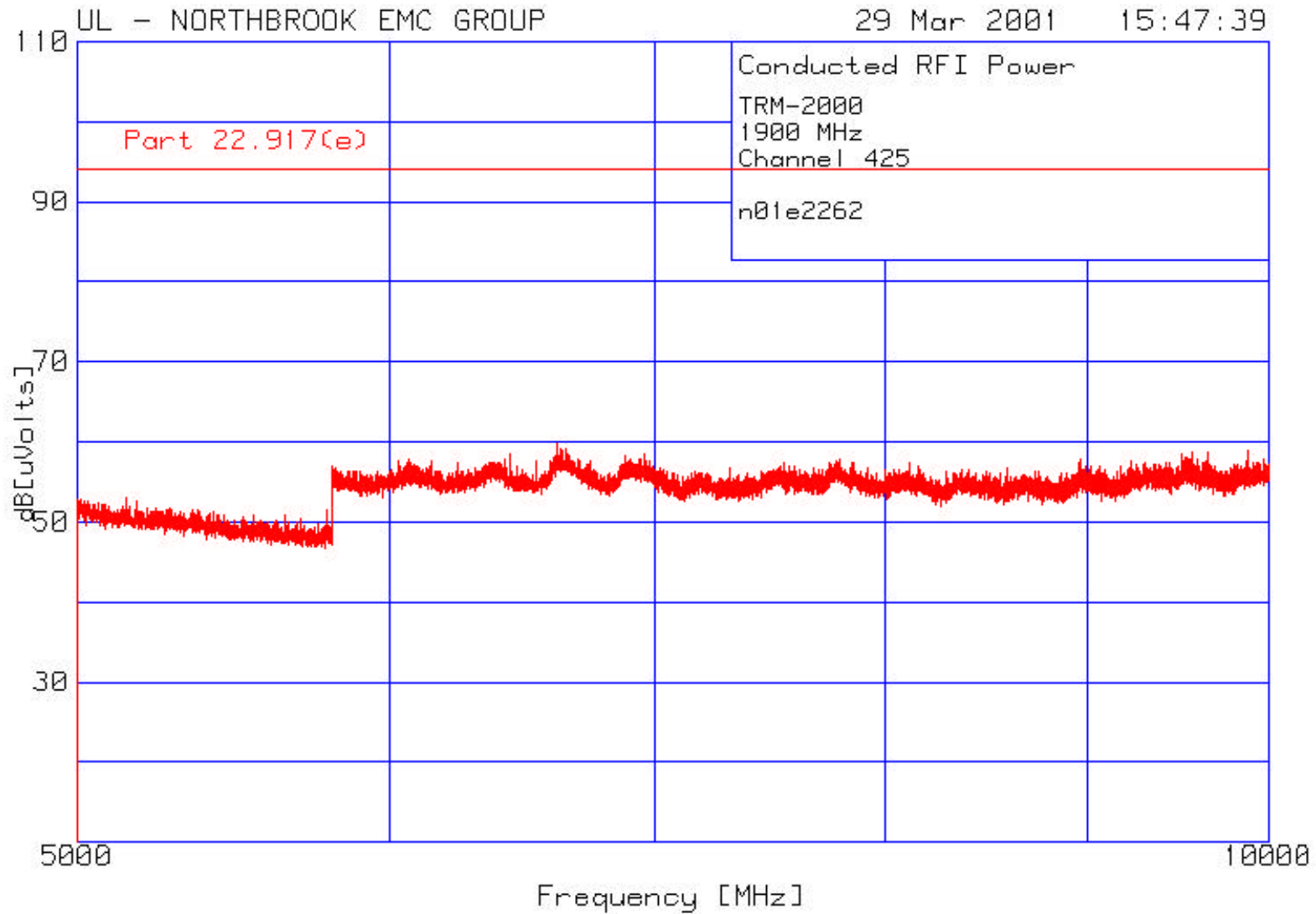
Spurious Emissions at Antenna Terminals
Channel 0425
1 to 2 GHz



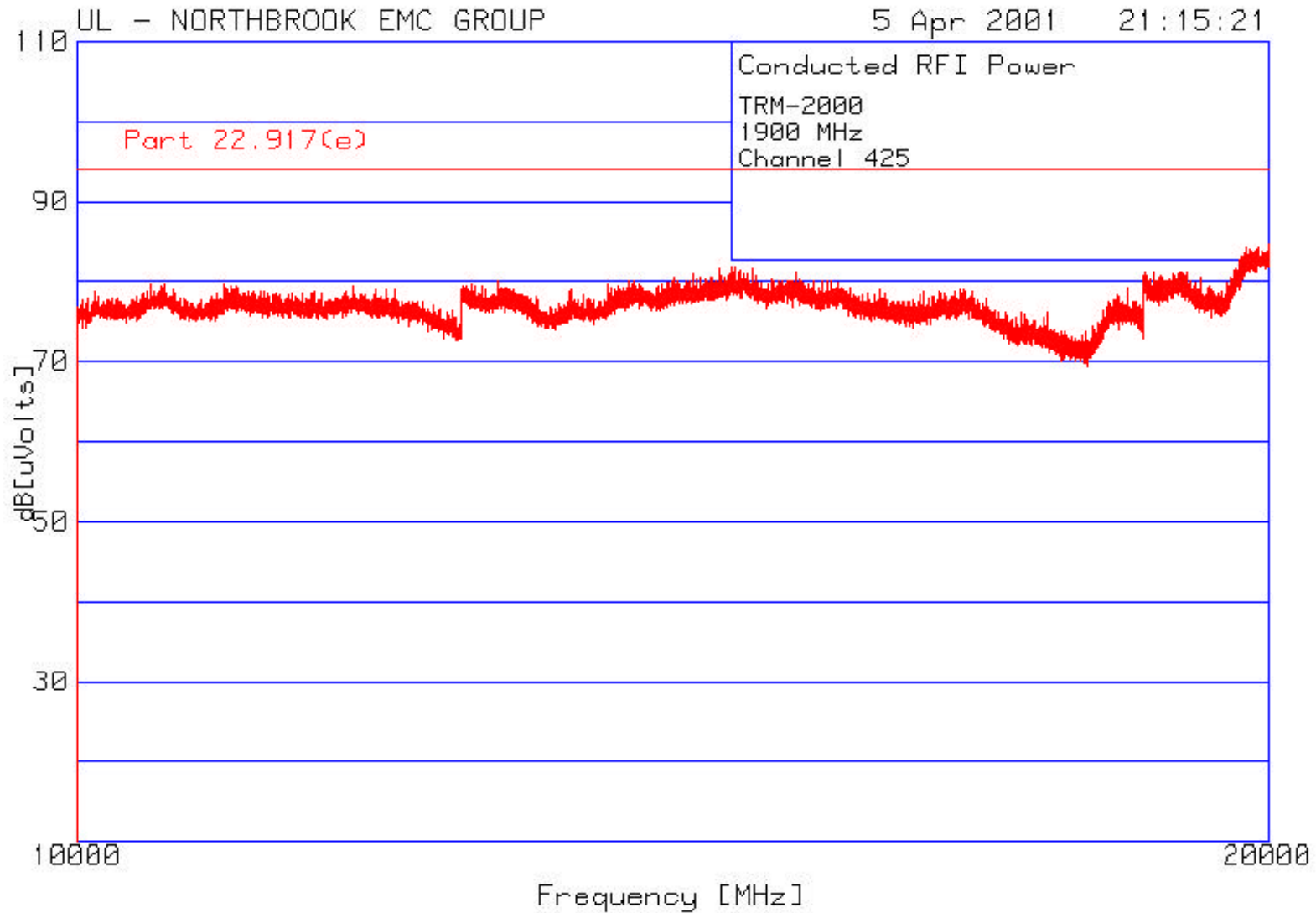
Spurious Emissions at Antenna Terminals
Channel 0425
2 to 5 GHz



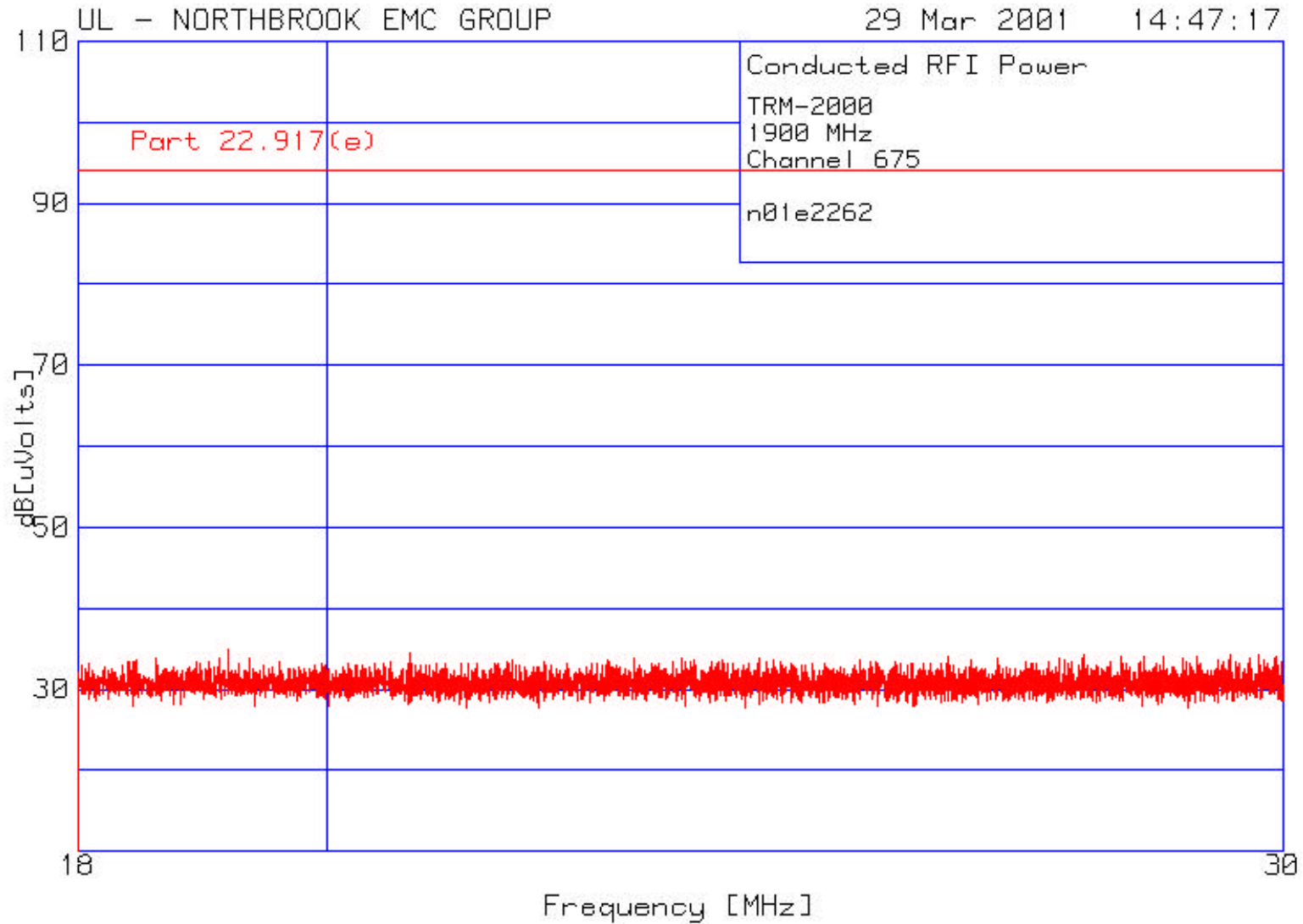
Spurious Emissions at Antenna Terminals
Channel 0425
5 to 10 GHz



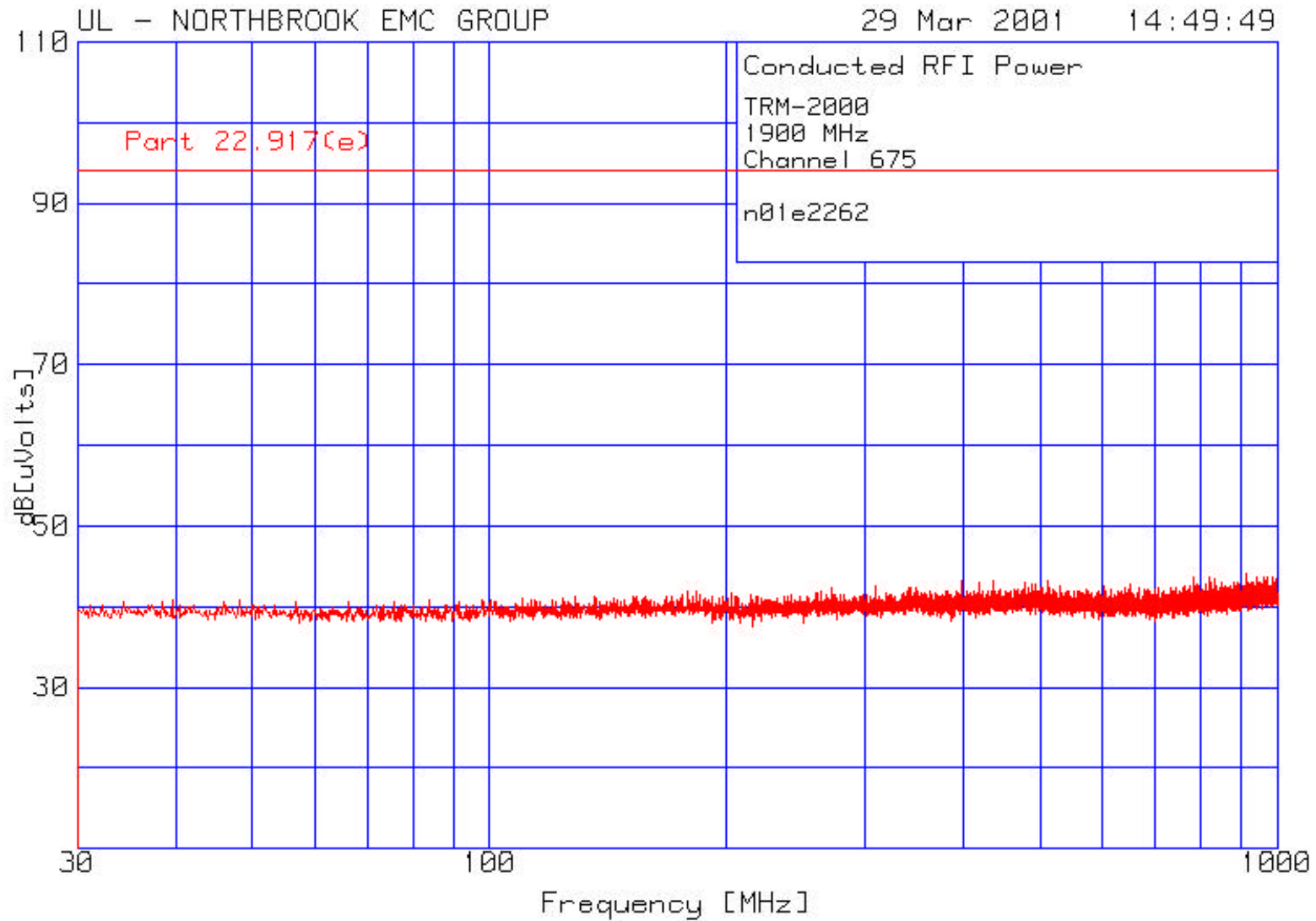
Spurious Emissions at Antenna Terminals
Channel 0425
10 to 20 GHz



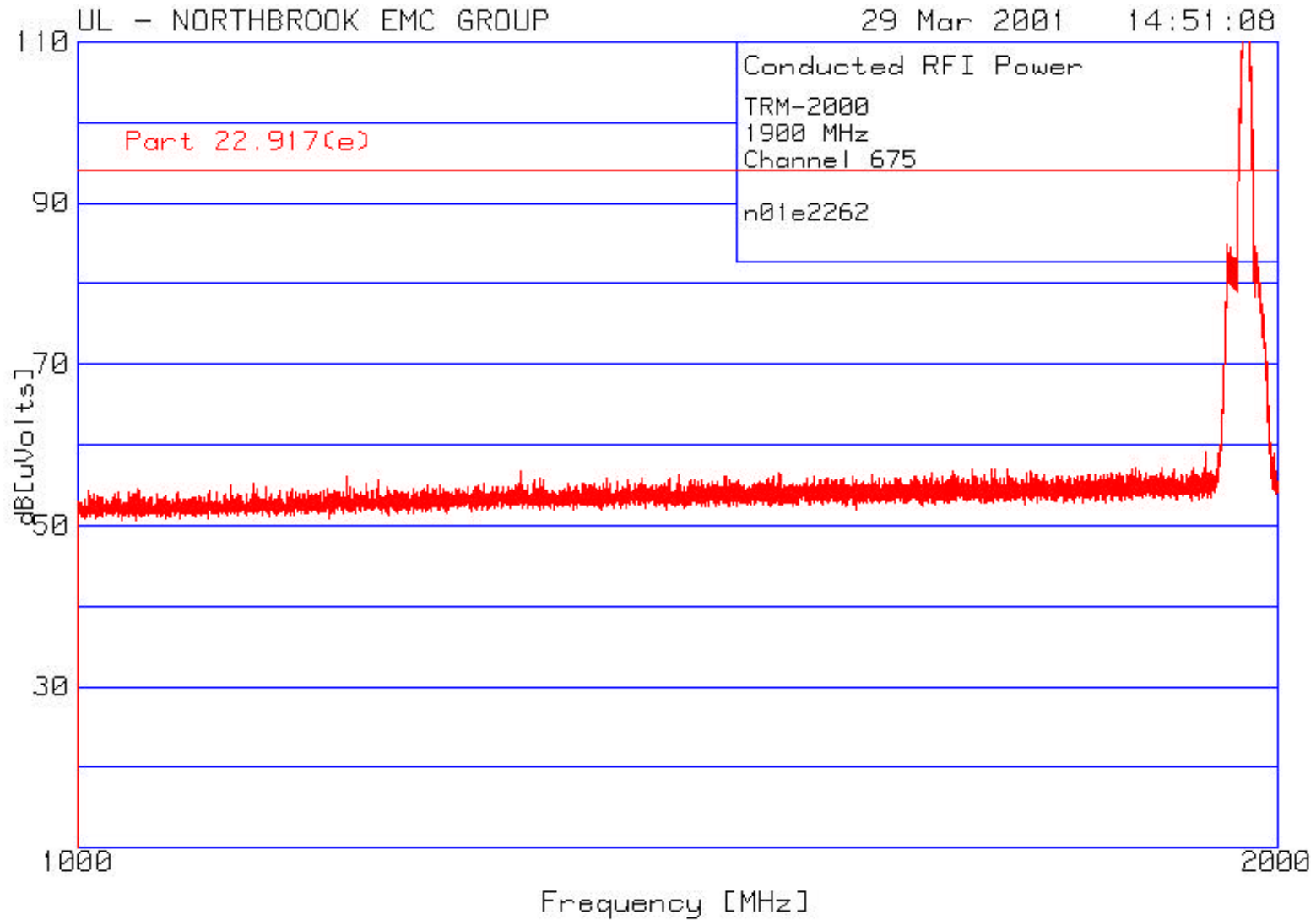
Spurious Emissions at Antenna Terminals
Channel 0675
18 to 30 MHz



Spurious Emissions at Antenna Terminals
Channel 0675
30 MHz to 1 GHz



Spurious Emissions at Antenna Terminals
Channel 0675
1 to 2 GHz



Spurious Emissions at Antenna Terminals
Channel 0675
2 to 5 GHz

