



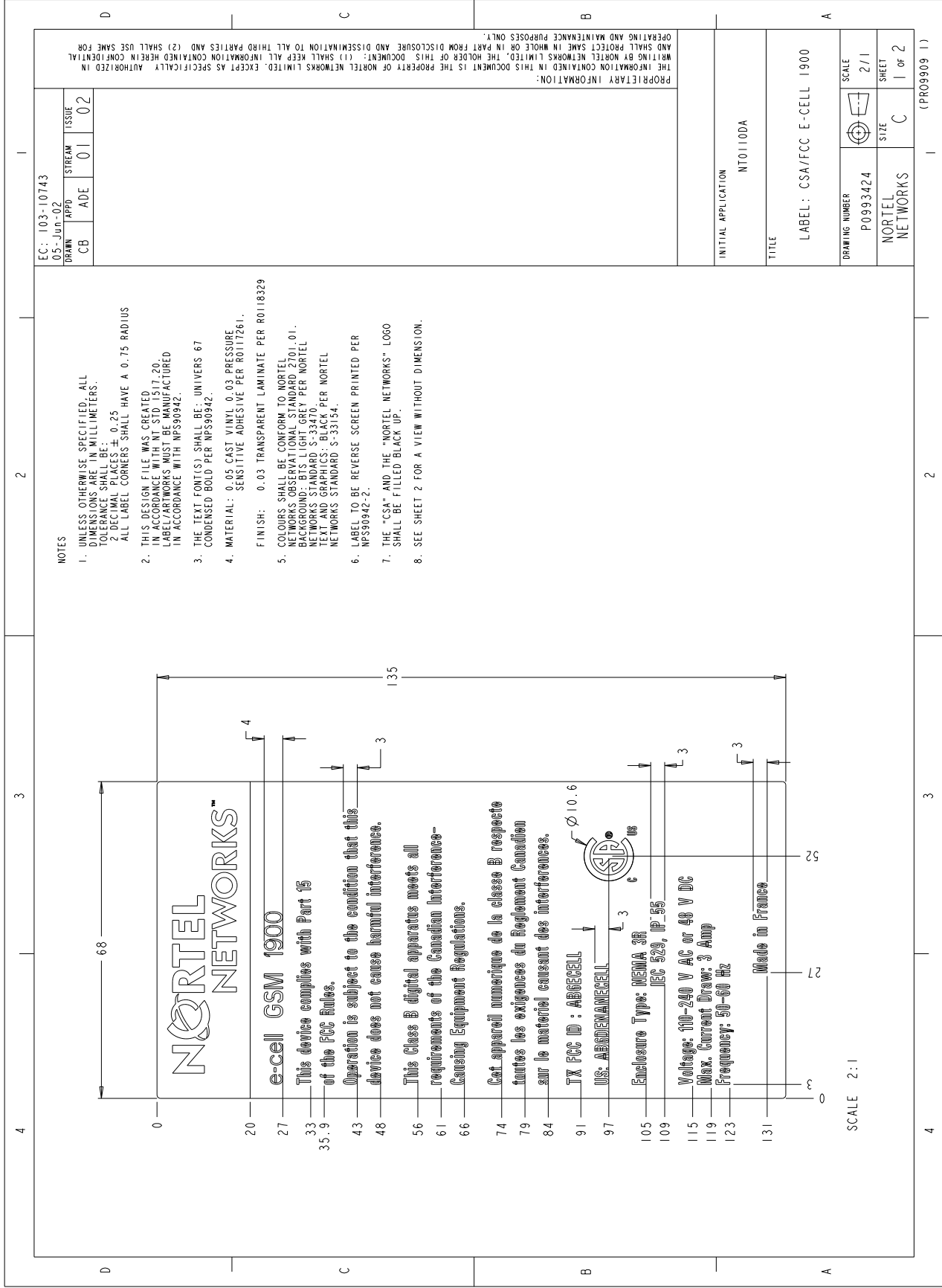
## EXHIBIT 3

Transmit Label Photo

Applicant: Northern Telecom Ltd.

For Certification on:

AB6ECCELL



**NOTES**

1. UNLESS OTHERWISE SPECIFIED, ALL DIMENSIONS ARE IN MILLIMETERS. TOLERANCE SHALL BE:  
 2 DECIMAL PLACES ± 0.25  
 ALL LABEL CORNERS SHALL HAVE A 0.75 RADIUS
2. THIS DESIGN FILE WAS CREATED IN ACCORDANCE WITH INT. STD. 1517.20. LABEL/ARTWORKS MUST BE MANUFACTURED IN ACCORDANCE WITH NPS90942.
3. THE TEXT FONT(S) SHALL BE: UNIVERS 67  
 CONDENSED BOLD PER NPS90942.
4. MATERIAL: 0.05 CAST VINYL 0.03 PRESSURE SENSITIVE ADHESIVE PER R0117261.  
 FINISH: 0.03 TRANSPARENT LAMINATE PER R0118329
5. COLOURS SHALL BE CONFORM TO NORTEL NETWORKS OBSERVATIONAL STANDARD 2701.01. BACKGROUND: BTS LIGHT GREY PER NORTEL NETWORKS STANDARD S-33470. TEXT AND GRAPHICS: BLACK PER NORTEL NETWORKS STANDARD S-33154.
6. LABEL TO BE REVERSE SCREEN PRINTED PER NPS90942-2.
7. THE "CSA" AND THE "NORTEL NETWORKS" LOGO SHALL BE FILLED BLACK UP.
8. SEE SHEET 2 FOR A VIEW WITHOUT DIMENSION.

EC: 103-10743			
05-Jun-02			
DRAWN	APPD	STREAM	ISSUE
CB	ADE	01	02

PROPRIETARY INFORMATION:  
 THE INFORMATION CONTAINED IN THIS DOCUMENT IS THE PROPERTY OF NORTEL NETWORKS LIMITED. EXCEPT AS SPECIFICALLY AUTHORIZED IN WRITING BY NORTEL NETWORKS LIMITED, THE HOLDER OF THIS DOCUMENT: (1) SHALL KEEP ALL INFORMATION CONTAINED HEREIN CONFIDENTIAL AND SHALL PROTECT SAME IN WHOLE OR IN PART FROM DISCLOSURE AND DISSEMINATION TO ALL THIRD PARTIES AND (2) SHALL USE SAME FOR OPERATING AND MAINTENANCE PURPOSES ONLY.

INITIAL APPLICATION  
 NTO1100A

TITLE  
 LABEL: CSA/FCC E-CELL 1900

DRAWING NUMBER	SCALE
P0993424	2/1
NORTEL NETWORKS	SHEET
	C 1 of 2

SCALE 2:1

(PRO9909 1)

4 3 2 1

D C B A

**NORTEL NETWORKS™**

**e-cell GSM 1900**

This device complies with Part 15 of the FCC Rules.  
Operation is subject to the condition that this device does not cause harmful interference.

This Class B digital apparatus meets all requirements of the Canadian Interference-Causing Equipment Regulations.

Cet appareil numérique de la classe B respecte toutes les exigences du Règlement Canadien sur le matériel causant des interférences.

TX FCC ID : AB6CELL  
US: AB6ENAMECELL

Enclosure Type: NEMA 3R  
IEC 529, IP 55

Voltage: 110-240 V AC or 48 V DC  
Max. Current Draw: 3 Amp  
Frequency: 50-60 Hz

Made in France

SCALE 2:1

DRAWING NUMBER	STREAM	ISSUE
P0993424	01	02
NORTEL NETWORKS	SIZE	SHEET
	C	2

4 3 2 1 (PRO3909 2)