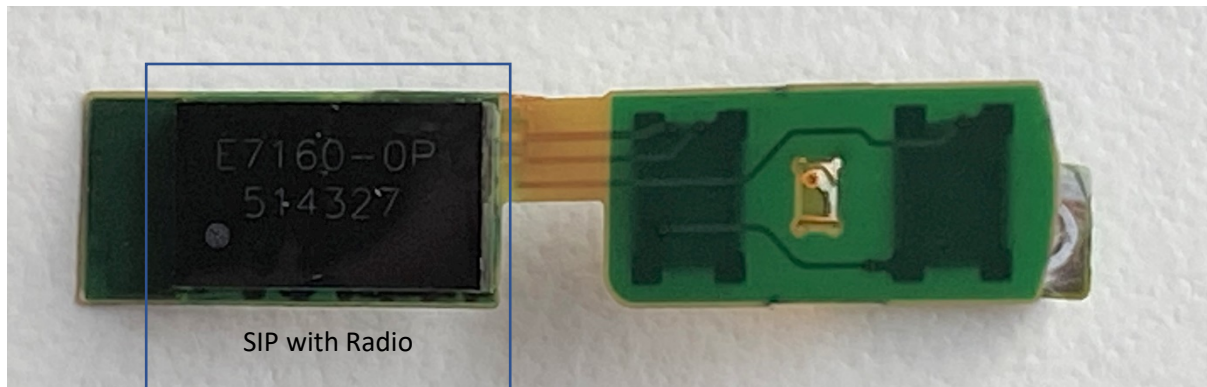
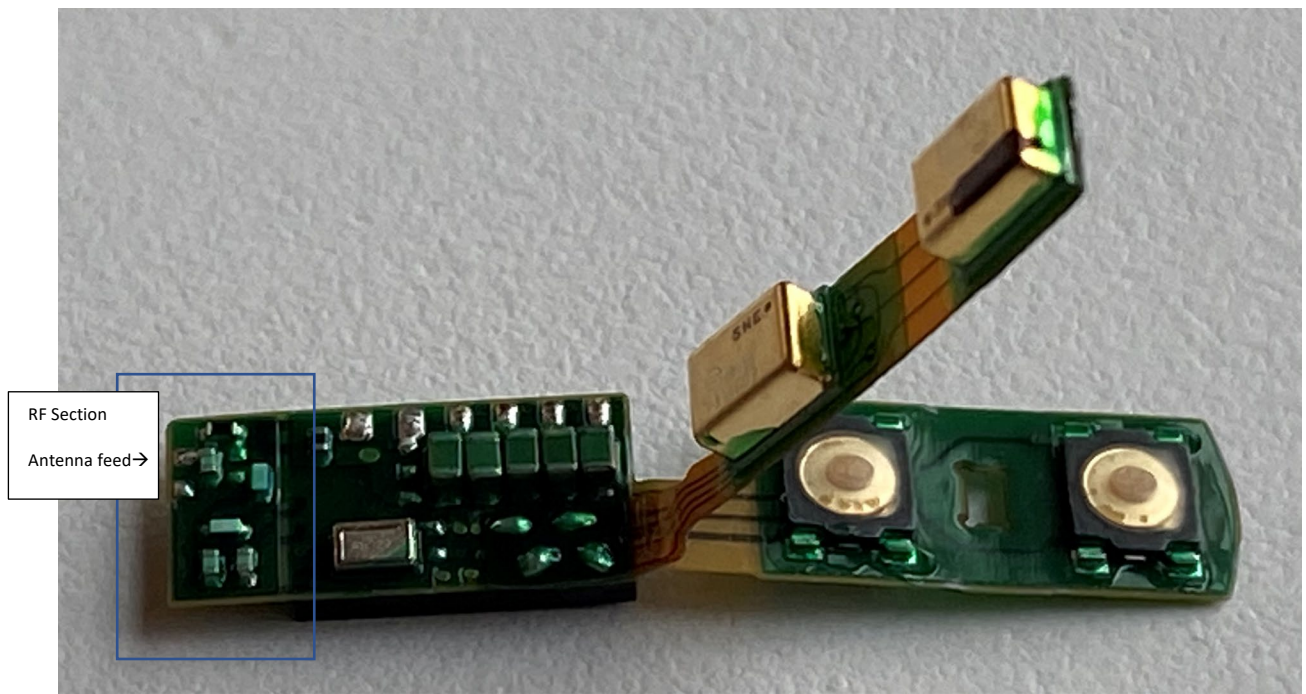
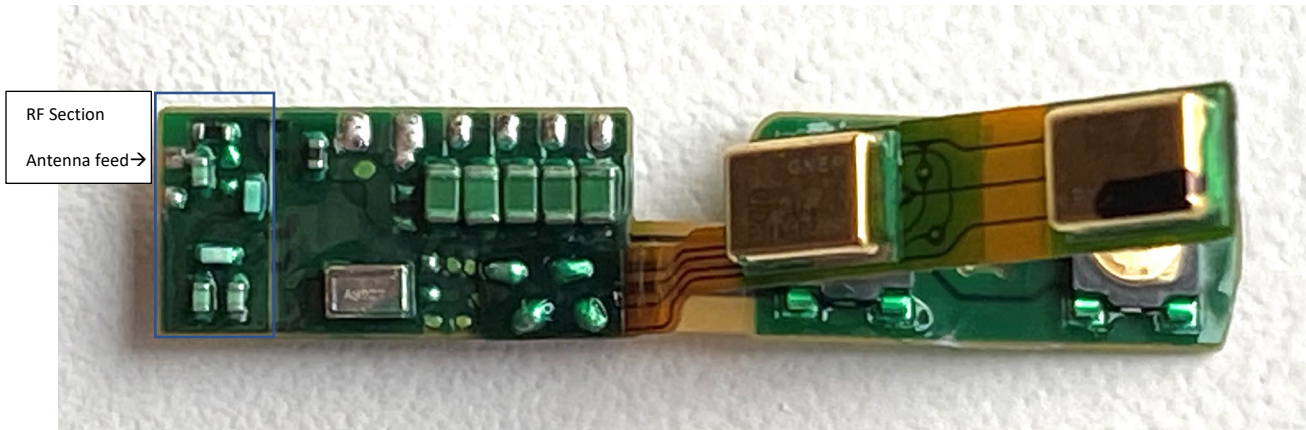
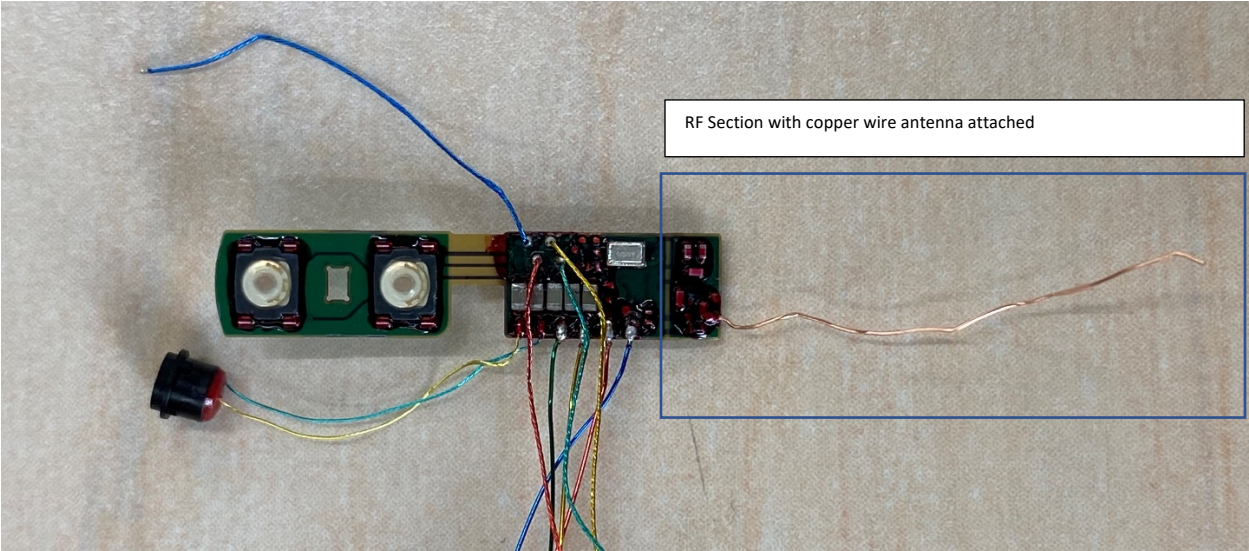
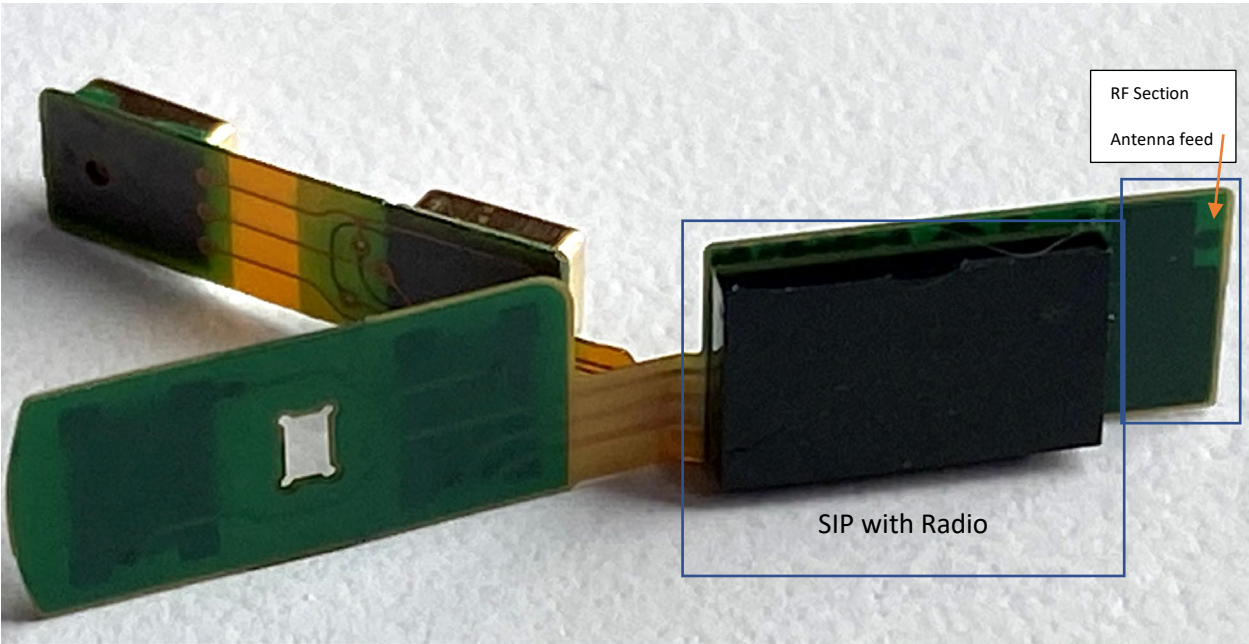


FCC ID: A94BMD0012

Internal Photos

The same PCBA and copper antenna are used for a left or right hearing aid.



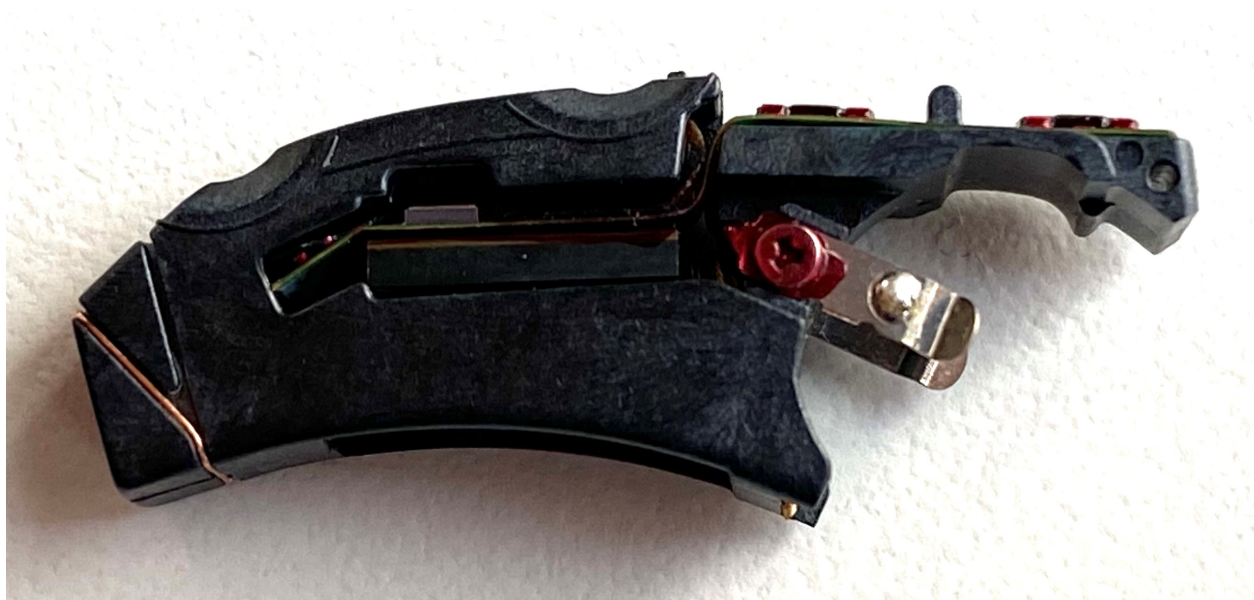


Hearing Aid with Right Antenna, Right Side View

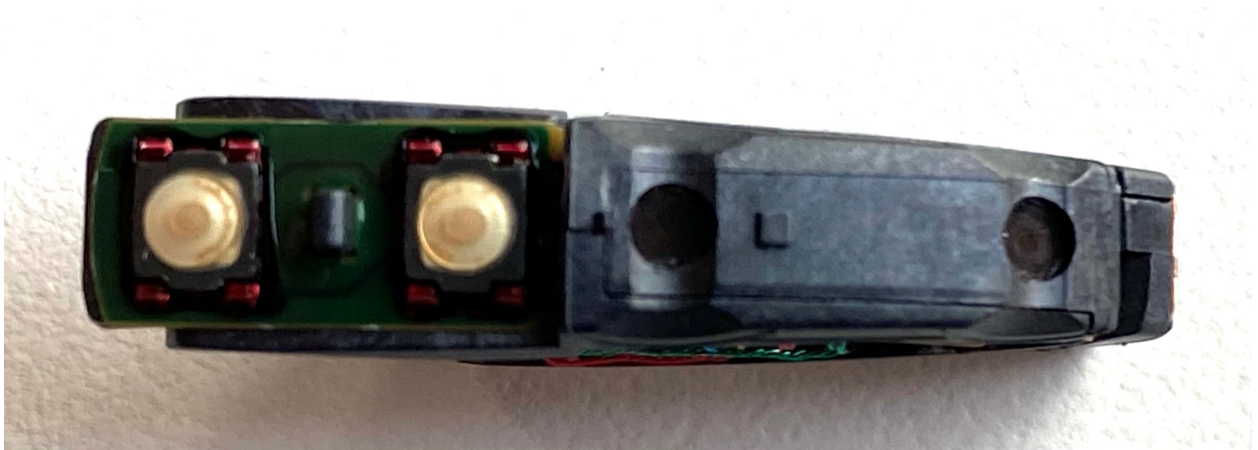
The antenna is wrapped one direction for a Right Antenna, and the opposite direction for a Left Antenna.



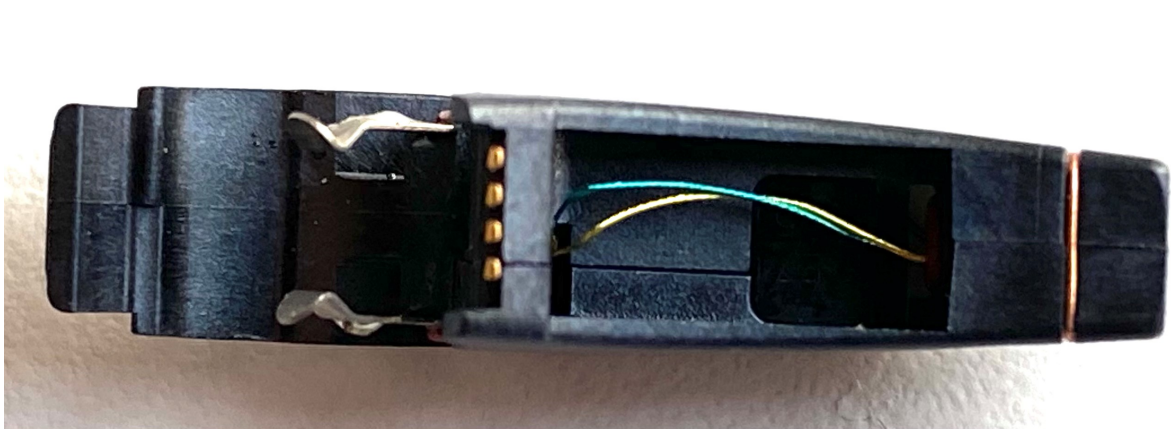
Hearing Aid with Right Antenna, Left Side View



Hearing Aid with Right Antenna, Top View



Hearing Aid with Right Antenna, Bottom View



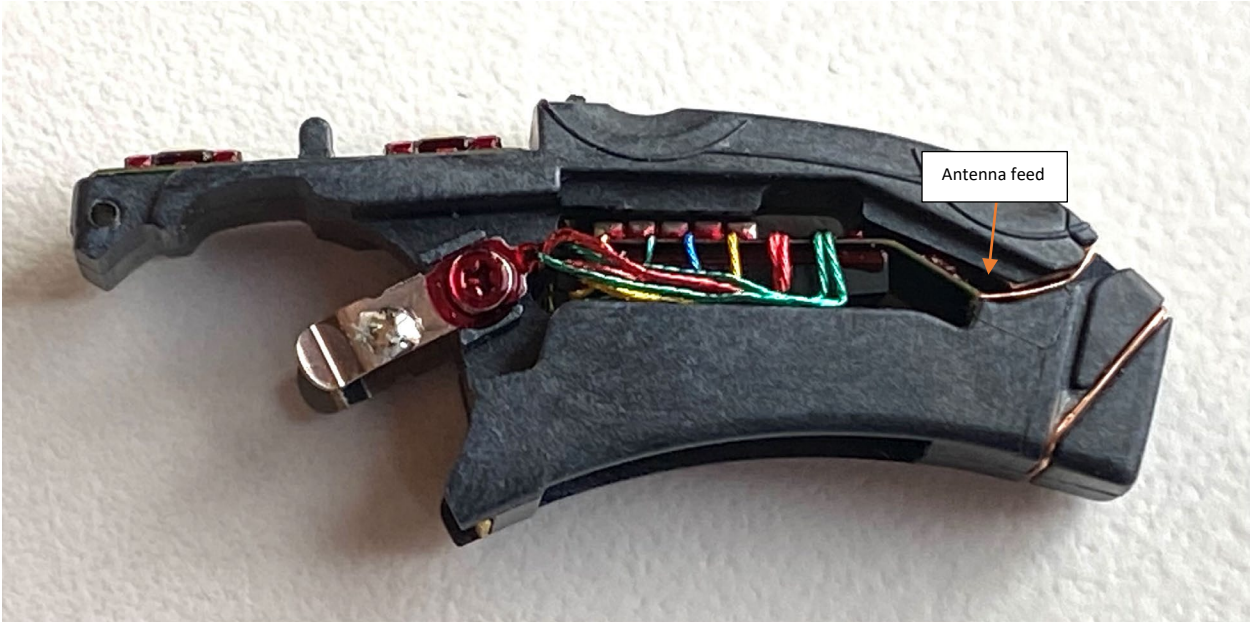
Hearing Aid with Right Antenna, Front View



Hearing Aid with Right Antenna, Back View



Hearing Aid with Left Antenna, Right Side View



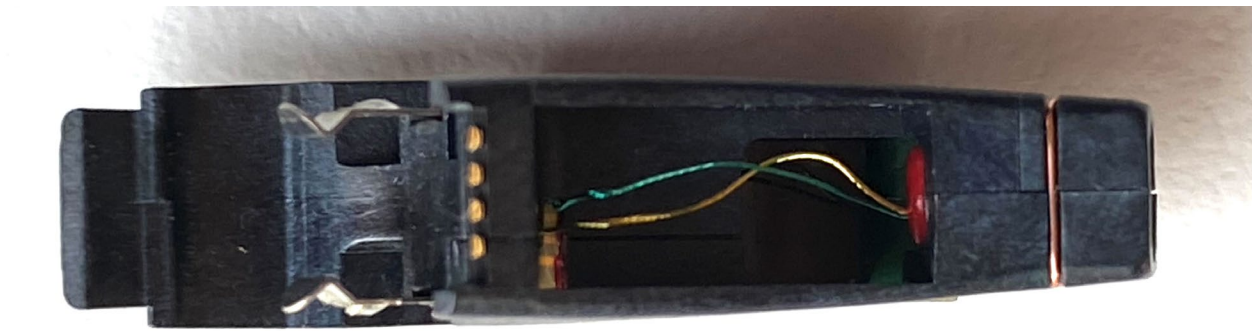
Hearing Aid with Left Antenna, Left Side View



Hearing Aid with Left Antenna, Top View



Hearing Aid with Left Antenna, Bottom View



Hearing Aid with Left Antenna, Front View



Hearing Aid with Left Antenna, Back View

