

BOSE[®]



Draft 6 - Jan 29

Bose[®] AE2w
Bluetooth[®] headphones

Owner's Guide

Safety Information

Please read this owner's guide

Please take the time to follow the instructions in this owner's guide carefully. It will help you set up and operate your system properly and enjoy its advanced features. Please save this guide for future reference.



WARNING: Contains small parts which may be a choking hazard. Not suitable for children under age 3.



WARNING: This product contains magnets which can be harmful to pacemaker wearers.



WARNING:

- Contains small parts which may be a choking hazard. Not suitable for children under age 3.
- This product contains magnets which can be harmful to pacemaker wearers.
- To reduce the risk of fire or electrical shock, do not expose the product to rain or moisture.
- Do not expose this apparatus to dripping or splashing, and do not place objects filled with liquids, such as vases, on or near the apparatus. As with any electronic products, use care not to spill liquids into any part of the system. Liquids can cause a failure and/or a fire hazard.
- Do not place any naked flame sources, such as lighted candles, on or near the apparatus.
- Use caution when using your headset/headphones while operating a vehicle or engaging in any activity that requires your full attention. Check and follow local laws regarding mobile phone and headphone/headset use. Some jurisdictions impose specific limitations, such as single earpiece configuration, on the use of such products while driving.
- Sounds that you rely on as reminders or warnings may have an unfamiliar character when using headphones. Be aware of how these sounds may vary in character so you can recognize them as needed.
- DO NOT use mobile phone adapters to connect headphones to airplane seat jacks as this could result in personal injury such as burns or property damage due to overheating. Remove and disconnect immediately if you experience warming sensation or loss of audio.
- Except in case of emergency, Bose recommends that you NOT use these headphones as aviation communication headsets because:
 - No incoming audio will be heard with a discharged or improperly installed battery. This could result in the potential of missed communications while piloting an aircraft.
 - Extremely loud ambient noise levels common to many propeller-driven aircraft may impair your ability to receive incoming audio communications, particularly during takeoff and climb out.
 - The Bose® AE2w *Bluetooth*® headphones are not engineered for noise conditions, altitude, temperature or other environmental conditions common in non-commercial aircraft, resulting in possible interference to critical communications.
- Do not submerge or expose for extended period to water or wear while participating in water sports, i.e. swimming, waterskiing, surfing, etc.
- Do not leave a battery on prolonged charge when not in use.



CAUTION:

- Refer to the owners guide for safety related information.
- Make no modifications to the system or accessories. Unauthorized alterations may compromise safety, regulatory compliance, and system performance.
- Long-term exposure to loud music may cause hearing damage. It is best to avoid extreme volume when using headphones, especially for extended periods.
- Use only with an agency approved power supply meeting local regulatory requirements (ex. UL, CSA, VDE, CCC).
- Refer to the power supply owner's guide for safety related information.
- Do not use headphones when operating a motor vehicle or anywhere the inability to hear outside sounds may present a danger to you or others.
- Do not drop, sit on or allow the headphones to be immersed in water.
- Be sure the earcup ports are kept clear, and that no moisture is allowed to get inside the earcup.
- The Bose AE2w *Bluetooth* headphones do not require scheduled cleaning. Should cleaning be necessary, simply wipe the outside surfaces with a soft cloth.



Bose Corporation hereby declares that this product is in compliance with the essential requirements and other relevant provisions of Directive 1999/5/EC and all other applicable EU directive requirements. The complete declaration of conformity can be found at: www.Bose.com/compliance.

Important Safety Instructions

1. Read these instructions.
2. Keep these instructions.
3. Heed all warnings.
4. Follow all instructions.
5. Do not use this apparatus near water.
6. Clean only with a dry cloth.
7. Only use attachments/accessories specified by the manufacturer.

This device complies with FCC and Industry Canada RF radiation exposure limits set forth for general population. It must not be co-located or be operating in conjunction with any other antenna or transmitter.

In the United States:

This equipment has been tested and found to comply with the limits for a Class B digital device, pursuant to Part 15 of the FCC Rules. These limits are designed to provide reasonable protection against harmful interference in a residential installation. This equipment generates, uses, and can radiate radio frequency energy and, if not installed and used in accordance with the instructions, may cause harmful interference to radio communications. However, this is no guarantee that interference will not occur in a particular installation. If this equipment does cause harmful interference to radio or television reception, which can be determined by turning the equipment off and on, you are encouraged to try to correct the interference by one or more of the following measures:

- Reorient or relocate the receiving antenna.
- Increase the separation between the equipment and receiver.
- Connect the equipment to an outlet on a different circuit than the one to which the receiver is connected.
- Consult the dealer or an experienced radio/TV technician for help.

Changes or modifications not expressly approved by Bose Corporation could void the user's authority to operate this equipment.

In USA and Canada:

This device complies with part 15 of the FCC rules and Industry Canada license exempt RSS standard(s). Operation is subject to the following two conditions: (1) this device may not cause harmful interference, and (2) this device must accept any interference received, including interference that may cause undesired operation.

This class B digital apparatus complies with CAN ICES-3 B / NMB-3 B.

Output power less than 6.3mW (8 dBm).

Other agency markings

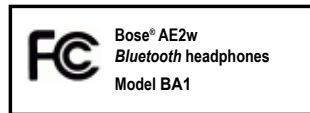
FCC ID: A94BA1

IC: 3232A-BA1

Engineered in the United States

Made in China

Meets IDA Requirements



廢電池請回收

Names and Contents of Toxic or Hazardous Substances or Elements						
Part Name	Toxic or Hazardous Substances and Elements					
	Lead (Pb)	Mercury (Hg)	Cadmium (Cd)	Hexavalent (CR(VI))	Polybrominated Biphenyl (PBB)	Polybrominated diphenylether (PBDE)
PCBs	X	0	0	0	0	0
Metal parts	X	0	0	0	0	0
Plastic parts	0	0	0	0	0	0
Speakers	X	0	0	0	0	0
Cables	X	0	0	0	0	0
0: Indicates that this toxic or hazardous substance contained in all of the homogeneous materials for this part is below the limit requirement in SJ/T 11363-2006.						
X: Indicates that this toxic or hazardous substance contained in at least one of the homogeneous materials used for this part is above the limit requirement in SJ/T 11363-2006.						

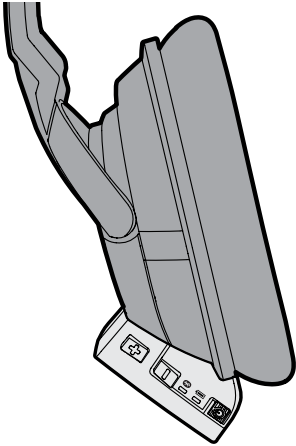
Introduction.....	4
Thank you.....	4
Included with the headphones.....	4
Control module features	4
Charging the battery.....	5
Tips for longer battery life	5
Connecting the headphones to your <i>Bluetooth</i> device.....	6
To pair the headphones with your device	6
Locating the <i>Bluetooth</i> device list	7
Battery charge level (for iOS devices)	7
Pairing additional devices	7
Using multiple devices	7
Wearing the headphones.....	7
Recognizing the lights and tones.....	8
<i>Bluetooth</i> Indicator	8
Battery Indicator	8
Audio Tones	8
Playback and phone call actions.....	8
Using the optional audio cable	9
To attach the audio cable	9
Maintenance.....	9
Battery care.....	9
Cleaning the headphones.....	9
Replacement parts and accessories.....	9
Reattaching earcup cushions	10
Troubleshooting	10
Customer service.....	11
Limited Warranty.....	11
Technical information	11

Introduction

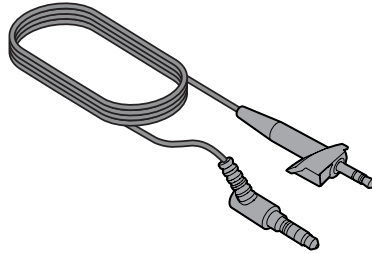
Thank you

We appreciate your choice of the Bose® AE2w *Bluetooth*® headphones. These wireless stereo headphones combine the audio performance and comfort you expect from Bose with the freedom to move away from your source.

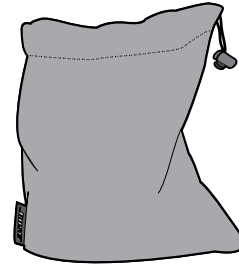
Included with the headphones



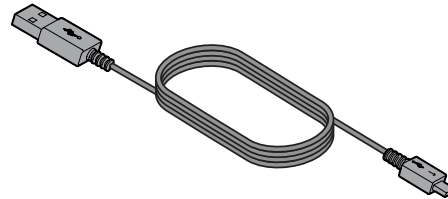
Bluetooth® control module (removable)



Optional audio cable

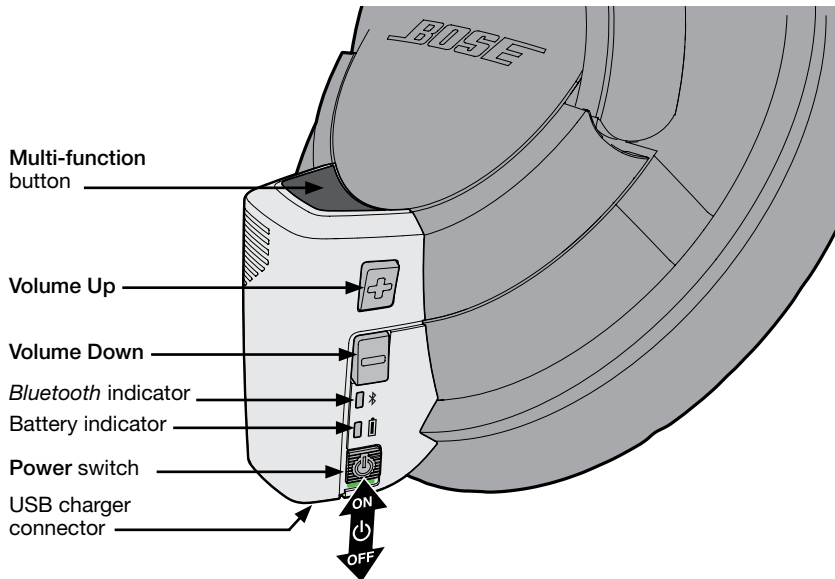


Carry bag



USB charging cable

Control module features



Multi-function button

Volume Up

Volume Down

Bluetooth indicator

Battery indicator

Power switch

USB charger connector

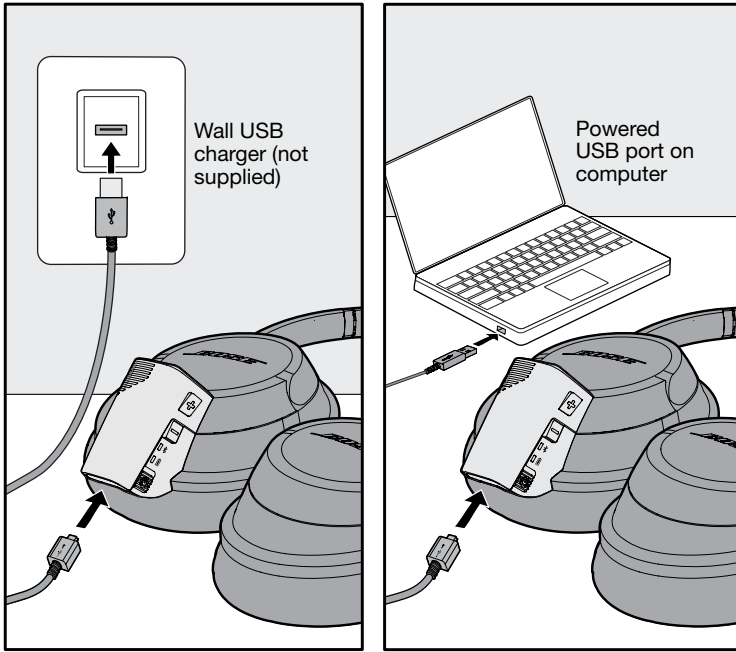
Using the headset

Charging the battery

Although the battery is partially charged at the factory, we recommend you fully charge the battery before first use. Allow up to 3 hours for a full charge.

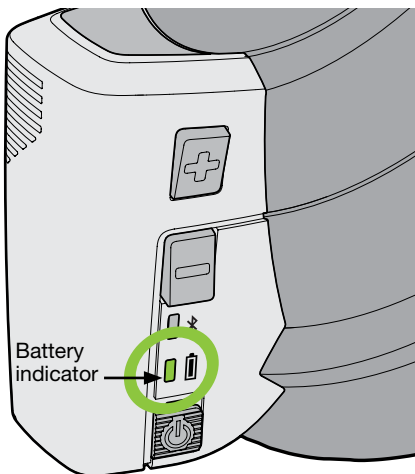
1. Plug the small end of the USB cable into the headphones.
2. Plug the large end of the USB cable into an agency approved wall USB charger (not supplied) or a powered USB port on your computer.

Note: The control module can also be charged when disconnected from the headphone earcup.



3. Allow up to 3 hours for a full charge.

The battery indicator will blink amber while charging and turn green when charging is complete.



Battery Indicator Color	Indicates:
Green (solid)	<ul style="list-style-type: none">• 1/2 hour to 7 hours remaining battery time
Amber (solid)	<ul style="list-style-type: none">• Less than 1/2 hour remaining battery time
Red (blinking)	<ul style="list-style-type: none">• Recharge headphones now
Amber (blinking)	<ul style="list-style-type: none">• Headphones are charging
Green (while charging)	<ul style="list-style-type: none">• Headphones are fully charged
Red (while charging)	<ul style="list-style-type: none">• Headphones are not within acceptable temperature range

Note: The headphones will not operate while charging.

Note: Before charging, be sure the headphones are at room temperature, between 41°F (5°C) and 104°F (40°C).

Tips for longer battery life

When fully charged, your AE2w Bluetooth headphones will provide approximately 7 hours of wireless audio.

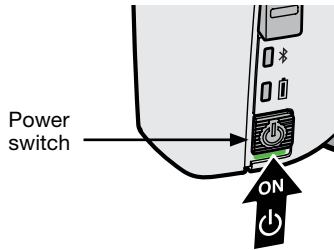
- Always slide the power button Off when the headphones are not in use. This will help preserve battery life.
- Be aware that certain audio sources will deplete the battery more quickly than others.
- Do not leave the battery uncharged for long periods of time. Fully charge before storing.

Connecting the headphones to your *Bluetooth* device

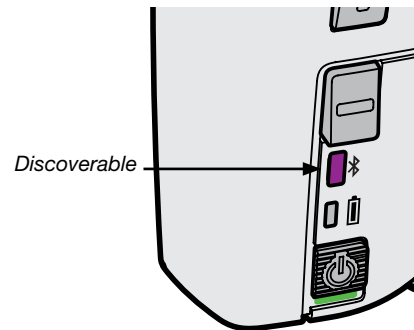
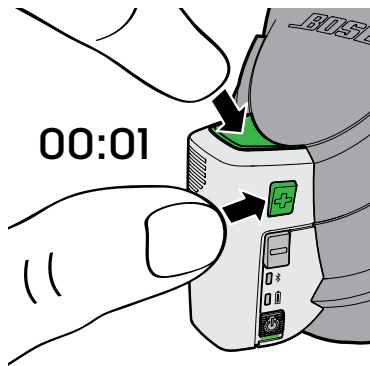
To use your AE2w *Bluetooth* headphones with a *Bluetooth* device (such as a smartphone or tablet), you must first establish a wireless connection between the headphones and the device. This process is called “pairing”. Once the headphones and a device have been paired, they will automatically reconnect the next time you use them together.

To pair the headphones with your device

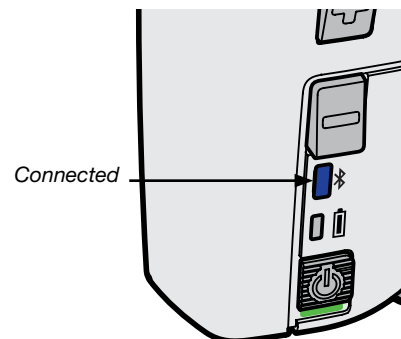
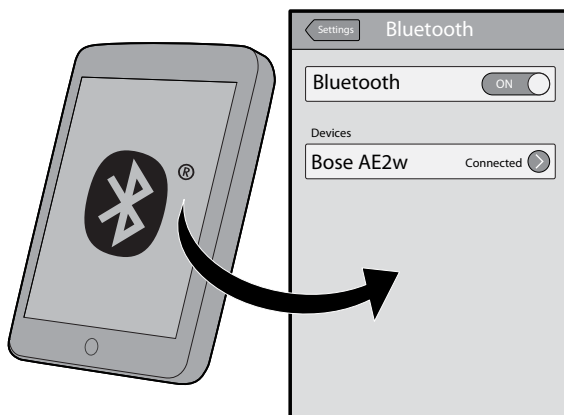
1. Slide the control module power switch to On.



2. Press and hold the **Multi-Function** and **Volume +** buttons **together** until the *Bluetooth* indicator blinks purple. The headphones are now discoverable and ready to pair with your device.



3. Enable *Bluetooth* on your device and locate the *Bluetooth* device list. (For help, see “Locating the *Bluetooth* device list” on page 8.)
4. Select “Bose AE2w ” from the device list. If your device requires a passkey, enter “0000”. When the wireless connection is complete, the *Bluetooth* indicator will turn solid blue.



Note: If the Bluetooth indicator does not turn solid blue, the wireless connection has not been made. Turn the headphones off and repeat steps 1 to 4, or see “Troubleshooting” on page 11.

Using the headset

Locating the *Bluetooth* device list

iOS 5: Settings > General > *Bluetooth* > ON > “Bose AE2w ”

iOS 6: Settings > *Bluetooth* > ON > “Bose AE2w ”

Android: Settings > Wireless & Networks > *Bluetooth* or *Bluetooth Settings* > ON > Search or Scan for Devices > “Bose AE2w ”

Blackberry: Home > Manage Connections > Set Up *Bluetooth* > Search > “Bose AE2w ” >

Mac OS X: System Preferences > *Bluetooth* > ON > “Bose AE2w ”

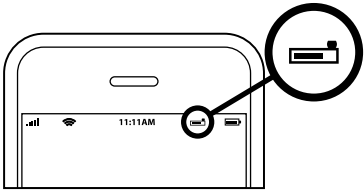
Windows 7: Start > Control Panel > Hardware and Sound > View Devices and Printers > Add a Device > “Bose AE2w ”

Windows XP: Start > Control Panel > *Bluetooth Devices* > “Bose AE2w ”

Note: For additional help locating the device list, refer to the owner’s guide that came with your device.

Battery charge level (for iOS devices)

When connected to AE2w *Bluetooth* headphones, iOS devices will display the AE2w *Bluetooth* battery charge level near the upper right corner of the screen.



Pairing additional devices

You can pair up to eight *Bluetooth* devices with your headphones. To pair additional devices with your headphones, repeat steps 2-3 on page 8 for each device. Only two audio devices can be connected at the same time.

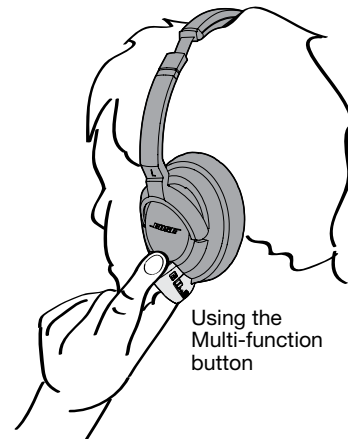
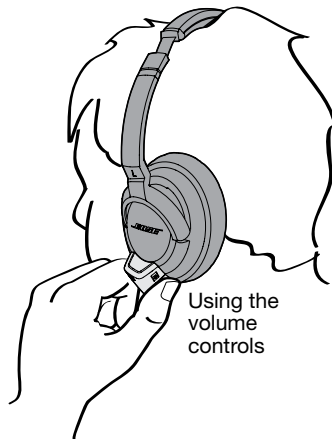
Using multiple devices

If you have two audio devices connected with your headphones, you can easily stop listening to one device and start listening to another. Simply stop or pause the music or video on the first device, then start the music or video on the second device. The headphones will switch to the device that is currently playing.

If you receive a phone call on a connected phone while you are listening to a connected audio source, the audio source will pause for the phone call and resume when the call has ended. For more information see “Playback and phone call actions” on page 9.

Wearing the headphones

Be sure to wear your AE2w *Bluetooth* headphones with the left earcup (L) and control module over your left ear. You can easily access the control module with your left hand, as shown. Use your thumb to control the volume and power switch; use your index finger to control the Multi-function button.



Recognizing the lights and tones

Bluetooth Indicator

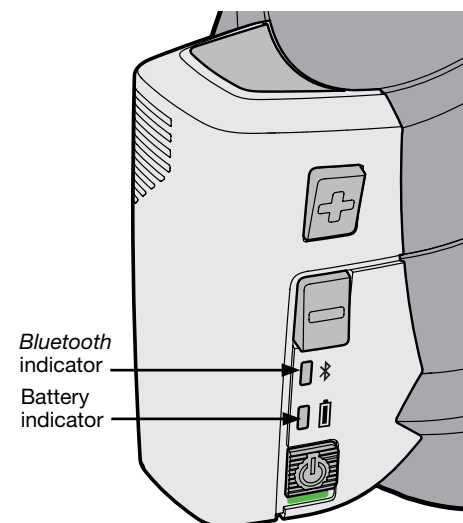
Color	Indicates:
Purple (blinking)	<ul style="list-style-type: none"> The headphones are discoverable for pairing.
Blue (blinking)	<ul style="list-style-type: none"> The headphones are attempting to connect to a <i>Bluetooth</i> device.
Blue (solid)	<ul style="list-style-type: none"> The headphones are connected to the <i>Bluetooth</i> device.

Battery Indicator

Color	Indicates:
Green (solid)	<ul style="list-style-type: none"> 1/2 to 7 hours remaining battery time
Amber (solid)	<ul style="list-style-type: none"> Less than 1/2 hour remaining battery time
Red (blinking)	<ul style="list-style-type: none"> Recharge headphones now
Amber (blinking)	<ul style="list-style-type: none"> Headphones are charging
Green (while charging)	<ul style="list-style-type: none"> Headphones are fully charged

Audio Tones

Tone	Indicates:
Two ascending tones	<ul style="list-style-type: none"> Headphones are discoverable
Three ascending tones	<ul style="list-style-type: none"> Headphones are connected to a device
Four ascending tones	<ul style="list-style-type: none"> Power On
Four descending tones	<ul style="list-style-type: none"> Power Off
Three descending tones	<ul style="list-style-type: none"> Wireless connection ended
? Tone	<ul style="list-style-type: none"> Low battery warning
Two descending tones	<ul style="list-style-type: none"> Incoming call



Playback and phone call actions

Audio/video playback actions	Headphones control
Play or pause	<ul style="list-style-type: none"> Press Multi-function once
Track forward	<ul style="list-style-type: none"> Double press Multi-function
Track back	<ul style="list-style-type: none"> Triple press Multi-function
Adjust the volume	<ul style="list-style-type: none"> Press Volume + or Volume -
Fast forward	<ul style="list-style-type: none"> Press, then press and hold Multi-function
Rewind	<ul style="list-style-type: none"> Double press, then press and hold Multi-function
Phone call actions	Headphones control
Answer or end a call	<ul style="list-style-type: none"> Press Multi-function once
Ignore a call	<ul style="list-style-type: none"> Press and hold Multi-function
Answer second call	<ul style="list-style-type: none"> Press Multi-function
Answer second call and end first call	<ul style="list-style-type: none"> Press and hold Multi-function
Activate voice control	<ul style="list-style-type: none"> Press and hold Multi-function
Multiple device actions	Headphones control
Pause audio on primary device and answer call on second device	<ul style="list-style-type: none"> Press Multi-function once
Ignore incoming call on second device and restart audio on primary device	<ul style="list-style-type: none"> Press and hold Multi-function

Reference

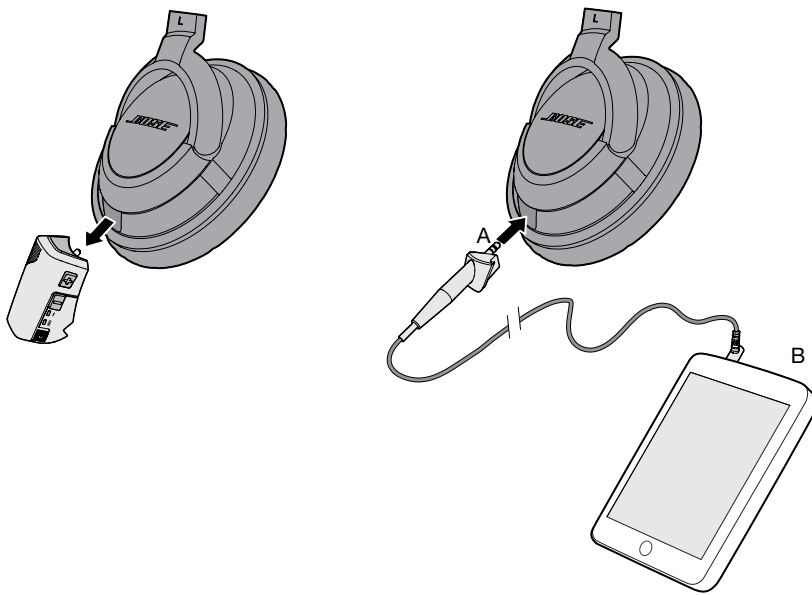
Using the optional audio cable

Your AE2w *Bluetooth* headphones come with a 3.5 mm audio cable that is compatible with most music sources. Use the audio cable when:

- The desired audio source is not *Bluetooth* technology enabled.
- The headphones battery is not charged.
- You are in an area where *Bluetooth* connectivity is prohibited.

To attach the audio cable

1. Slide the power switch to Off.
2. Remove the *Bluetooth* control module from the headphones by gently pulling it straight out.
3. Insert the audio cable plug (A) into the connector on the headphones until fully seated.
4. Insert the audio cable plug (B) into the 3.5 mm headphone connector on your audio source until fully seated.



Maintenance

Battery care

Be sure to turn off the headphones when it is not in use. Before storing the headphones for more than a few months, be sure the battery is fully charged.

Cleaning the headphones

The Bose® AE2w *Bluetooth* headphones does not require scheduled cleaning. Should cleaning be necessary, simply wipe the outside surfaces with a soft, dry cloth. Do not allow moisture to get inside the earcups or the audio input connector. Do not use liquids or sprays.

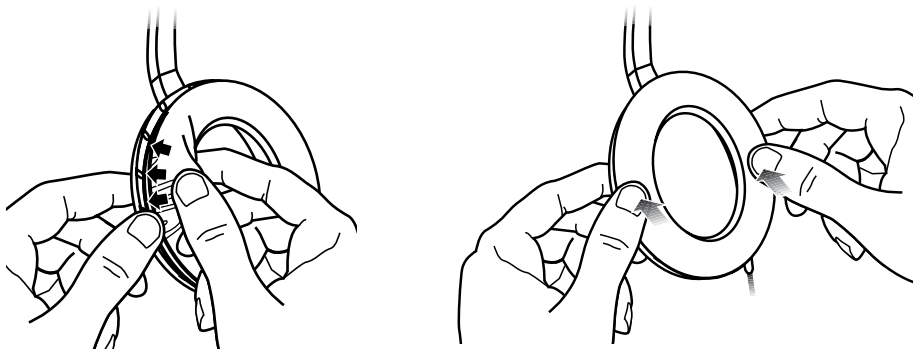
Replacement parts and accessories

Replacement parts and accessories can be ordered through Bose Customer Service. See the contact information for your area included in this guide.

Part Name	Part Product Code
Carry bag	329585-0010
Replacement cushion kit	329586-0010
USB charging cable	TBD
Audio cable (3.5 mm)	329583-0010
Wall charger	329341-0010
Wall charger plus adapter	329342-0010

Reattaching earcup cushions

The earcup cushions are held in place by a mounting flange which snaps under eight small tabs located around the inside rim of each earcup. If an earcup cushion becomes partially or completely detached, push the mounting flange of the earcup cushion back into the earcup. Using your finger or thumb, press around the edge of the mounting flange, making sure it snaps in place all the way around the earcup.



Troubleshooting

Problem	What to do
The headphones do not charge	<ul style="list-style-type: none"> When charging, make sure both ends of the USB cable are firmly connected. If you are using a power outlet, be sure the power supply is securely plugged in and the outlet is working. If you are using your computer, be sure the computer is plugged in and the USB port is powered. If solid red Indicator appears, the headphone temperature is too hot or cold. Return to room temperature conditions before charging. Turn headphone On and then Off. Disconnect and reconnect the USB charging cable.
The headphones and the <i>Bluetooth</i> device do not pair	<ul style="list-style-type: none"> Make sure the headphones are not connected to the charger and the power switch is On. Turn the device off, then on again. Turn on the <i>Bluetooth</i> feature on the device. Turn off the <i>Bluetooth</i> feature on any other device that is paired with the headphones. Clear the paired device list from the headphones by pressing and holding Multi-function and Volume - for 10 seconds. See “To pair the headphones with your device:” on page 7. Try pairing with a different device to ensure the headphones are working properly.
The headphones and the <i>Bluetooth</i> device do not connect	<ul style="list-style-type: none"> Make sure the headphones are not connected to the charger and the power switch is On. Make sure the <i>Bluetooth</i> feature on the device is On. Make sure the headphones are within range of the device: up to 33 feet (10 m). Turn off the <i>Bluetooth</i> feature on any other device that is paired with the headphones Turn the headphones off, then on again, the headphones should automatically connect to the device. If it does not automatically reconnect, select “Bose AE2w” in the device’s pairing list. Power the device off, then on again. Try connecting to a different paired device to be sure the headphones are working properly.
No audio or poor audio quality from a streaming audio source/application	<ul style="list-style-type: none"> Make sure the streaming audio source is on and playing. Make sure the audio device supports A2DP audio streaming. Try another streaming audio source/application or try another track. Make sure the device’s <i>Bluetooth</i> volume is turned up and not muted. Move the device closer to the headphones (33 feet or 1 meter). Move the device and headphones away from any device that could cause interference, such as another Bluetooth device, cordless phones, a microwave oven, or a wireless computer network router. Reduce the number of applications that are running on your device. Disabling Wi-Fi functionality on the device may also improve audio quality.
No audio or poor audio quality from a connected device	<ul style="list-style-type: none"> If using a <i>Bluetooth</i> device, ensure that the control module is firmly connected to the headphones. If using the 3.5 mm audio cable, ensure both ends of the audio cable are firmly seated. Try another music application or try another track. Try a different audio device. Make sure both ear cushions are firmly secured.
Audio does not match video	<ul style="list-style-type: none"> Try another streaming audio device or application or try another track. Some delay is expected from some sources or applications.
Mis-shaped cushion	<ul style="list-style-type: none"> The high-density earcup foam will regain its shape after a few minutes in a neutral position.

Reference

Problem	What to do
Short battery life	<ul style="list-style-type: none">• Fully charge the headphones. When fully charged, the battery indicator will glow solid green (while on the charger).• When fully charged, your AE2w <i>Bluetooth</i> headphones will provide approximately 7 hours of wireless audio or approximately 200 hours of standby time.• Disable tones and notifications in your device that may be frequently sent to the headphones.• Be aware that some devices may drain the headphones battery more quickly than others.• See page 7 of this document for more information on understanding battery performance.

Customer service

Or for online support visit: owners.Bose.com (in the U.S.) or global.Bose.com (outside the U.S.).

To contact Bose by phone, refer to the address list on the inside back cover of this guide.

For additional help in solving problems, contact your Bose® dealer.

Limited Warranty

Your Bose® AE2w headphones are covered by a limited warranty. Details of the limited warranty are provided on the product registration card that is included in the carton. Please refer to the card for instructions on how to register. Failure to register will not affect your limited warranty rights.

To obtain Limited Warranty service

Return the product, with proof of purchase from an authorized Bose dealer, as follows:

Contact Bose support in your country/region (visit Global.Bose.com for contact information in your country/region) for specific return and shipping instructions.

Label and ship the product, freight prepaid, to the address provided by Bose support in your country.

Place any necessary Return Authorization Number prominently on the outside of the carton. Cartons not bearing a Return Authorization Number, where required, will be refused.

The serial number can be found on the inside of the left earcup or on the original carton.

Technical information

Temperature ranges:

Operate this product within the temperature range of -4°F to 113°F (-20°C to 45°C) only.

Store this product within the temperature range of -4°F to 113°F (-20°C to 45°C) only.

Charge the battery where the temperature is between 41°F and 104°F (5°C and 40°C) only.

Battery: Rechargeable, non-replaceable lithium-ion polymer.

Charging time: 3 hours for full charge.

Operating time: Approximately 7 hours.

Operating range: Up to 33 feet (10 m) from device.

Bluetooth® QD ID: XXXXXX

Version 4.0

Profiles include: Headphones (HSP 1.1); Hands Free (HFP 1.5); Advanced Audio Distribution Profile (A2DP 1.2); Audio/Video Remote Control Profile (AVRCP 1.4).

The *Bluetooth®* word mark and logos are registered trademarks owned by Bluetooth SIG, Inc. and any use of such marks by Bose Corporation is under license.



363405-0010

BOSE[®]
Better sound through research[®]

©2013 Bose Corporation, The Mountain,
Framingham, MA 01701-9168 USA
AM363405 Rev. 00