

CLASS	DWG NO.	SH	1
SD	831249-00E0		
REVISIONS			
REV	DESCRIPTION	CHK	ENG

- CHANGES FOR DP1
1. CHANGE CHARGER TO FANS4063
 2. ADD Q5 FOR POWER PATH
 3. DNI MAX17055 FOR BATTERY GUAGE
 4. CHANGE MAINBOARD CABLE TO FFC , ADD J3
 5. ADD R19 D9 FOR FAST RESPONSE HOLD RESET
 6. ADD ZR2 FOR 20V SURGE
 7. ADD VINB FLAG FOR SW TO INDICATE THE WIRELESS CHARGER
 8. REMOVE NTC ON MAINBOARD FOR WIRELESS CHARGER
 9. CHANE G D8 AND ZR1
 10. ADD D7 AND D1 FOR LED ESD
 11. ADD I2C INTERFACE FOR THERMAL IC
 12. R39 ; R40 00HM CHANGE FUSE
 13. REMOVE C221(22UF 16V 0005) ADD C221;C224 (10UF 25V 0603)
 14. REMOVE C212
 15. Q21 Q22 Q23 Q24 Q25 (DDTC143ZE) CHANGE DDCT143XE

- CHANGES FOR DP2
1. ADD TVS (D13) FOR ISP_TX/RX CIRCUIT
 2. NOW NEED CHANGE TO P800: VOUT_CHK PA06:LED2
 3. REMOVE U3(MAX17055) CHARGER TPS3831G33
 4. ESD FIX. ADD 100NF 0402/25V AT BT_BUTTON_L, ADD 10NF 0402 PARALLEL WITH R44. CLOSER TO IO.
 5. FOR X2 CRYSTAL. PLS USE EARBUO 32MHZ CRYSTAL FOOTPRINT FROM NDK FOR COST DOWN PURPOSE.
 6. KEEP THE LC TANK C202 AND C203 FOOTPRINT ON BOARD. PMA SUPPORT CAP C206 C209 . WE DON'T NEED IT ANY MORE. JUST REMOVE IT FROM SCH AND PCB.
 7. Q6 SHOULD BE 2N2007K FOR BETTER ESD PROTECTION.
 8. DNI R13 C5. KEEP SOLDER PAD WT1 WT2 WT104 ON BOARD. REMOVE I2C THERMAL SENSOR AND FPC CABLE.
 9. CHANGE TO TWO PIN LEAD NTC SENSOR FOR COST DOWN PURPOSE. ALSO CHANGE NTC FOR WIRELESS CHARGER TO LEAD TYPE.
 10. ADD 0R JUMPER(R52) FOR NCP3901.
 11. ADD THERMAL SENSOR (103JT-025) FOR BATTERY PACK AND WIRELESS COIL.
 12. THE WUSS_CHG_PRESENT_H CIRCUIT WAS CHANGED FROM U1 PA04 TO PA07.
 13. REMOVE THE FAST_CHG_EN CIRCUIT
 14. PWR_GD_IN_L CIRCUIT CONNECTION ADJUSTMENT.
 15. ADD C38 10UF/5.3V CAPACITOR
 16. R37 CHANGE FROM 750K TO 1.5MOHM
 17. DNI R15 12K.

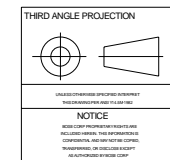
- CHANGE C200 , C201 , C202 TO 100NF.
CHANGE C203 55NF.

CHANGE FOR DP2.1

1. ADD SIGNAL NAME VBAT TO BATPACK+ NET.
2. ADD TEST POINT TO BATPACK+.
3. CHANGE NTC_CHECK CIRCUIT POWER FROM VOUT TO VCC.
4. ADD 12PF TO I2C CLK CIRCUIT.
5. CHANGE LED R101-R105 FROM 1.5K TO 2.7K OHM.
6. CHANGE R33 FROM 274K TO 243K OHM.
7. ADD 100K PULL UP R TO STAT PIN AND POK_B PIN OF CHARGER IC. (DNI IN SCHEMATIC AND BOM)
8. ADD 10K PULL DOWN R TO DIS PIN OF CHARGER IC. (CLOSE TO QN900B)
9. CHANGE Q5 TO DDTC143XE.
10. CHANGE R43 FROM 470K TO 10K.
11. DEL R48.
12. CONNECT REF OF CHARGER IC TO BASE OF Q5.
13. CHAGE R51 TO 22 OHM (1206 FOOTPRINT)
14. DNI ZR1(PTUS18V51UR).
15. LED DS101-DS105 CHANGE FROM SMLA12WBC7W (ROHM) TO LTW-5270DC5-B0 (LITE-ON)
16. CRYSTAL X1 CHANGE TO TXC 10PF (MPN: 8032070017)
17. CHANGE R10 & R11 PART TOLERANCE FROM 1% TO 0.5% (300K 0.5%, 100K 0.5%).

- CHANGE FOR C2.5
1. DNI WT309 AND WS. ADD W3 JUMPER FOR BATTERY NTC CONNECT TO NTC CHECK CIRCUIT.
 2. R22 CHANGE TO 750K.
 3. (RESET CIRCUIT) REMOVE Q7.
 - R37 CHANGE TO 2M OHM.
 - R38 CHANGE TO 100K OHM.
 - C23 CHANGE TO 1000PF.
 - ADD C40 0.1UF.
 - ADD R55 200K OHM.
 - ADD U4 TLV7021DPWR.
 4. REMOVE FIDC1 & FIDC3
 5. ADD U9 USB DETECTOR IC.
 6. R210 CHANGE TO 8.65K 0402.
 7. PWR_GD_IN_L NAME CHANGE TO PWR_GD_IN.
 8. PA09 NAME CHANGE TO TRICKLE_CHG_EN_L.
 9. RENAME CHG_DET_IN_L TO CHG_STAT
 10. ADD BATTERY STANDBY CIRCUIT.
 11. REMOVE ZR1.
 12. REMOVE TPF67.
 13. C56; C57 CHANGE HIGHER RATING FROM 6.3V TO 16V.
 14. R49 USE 255K 0402.
 15. DNI U3 AND Q10.

THIS DRAWING IS BASED ON CADENCE DATA. ALL CHANGES MUST BE MADE USING THE CADENCE FILES ATTACHED TO ED831249-00E0



LEVEL	DRAFTER	DATE
3	ZP ZHANG	04/14/19
	CHECKER	DATE
	ZP ZHANG	21/11/19
	ENGINEER	DATE
	ZP ZHANG	21/11/19
	SAFETY ENGINEER	DATE
	HUGO L LU	XX/XX/XX
	DATE	DATE
	BEL TO PROD PER AT REV 00	XX/XX/XX

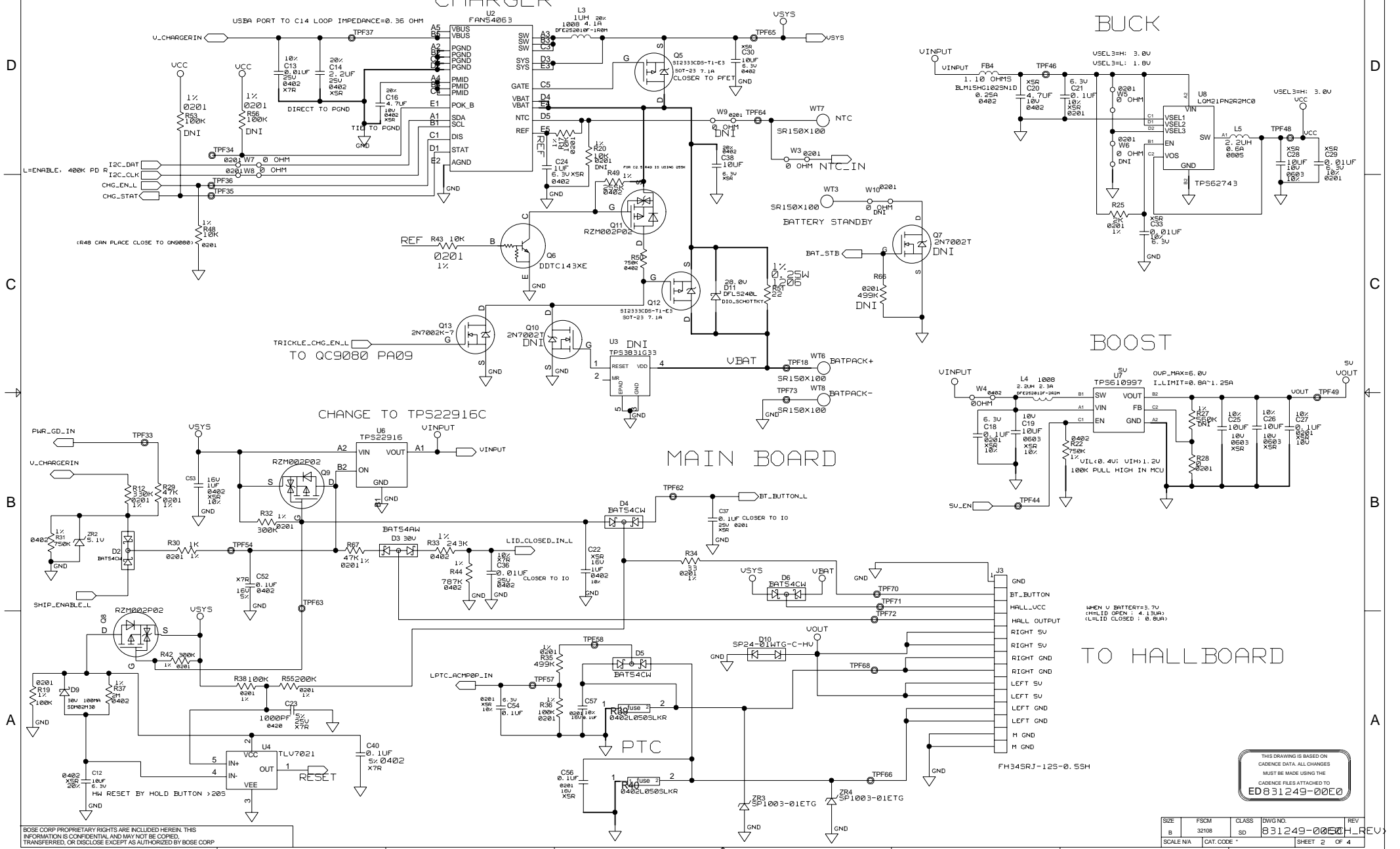
SAFETY CONTROLLED			
BOSE FRAMINGHAM, MA 01701-9168			
DESCRIPTION			
MAIN BOARD Case Lando			
SIZE	FSCM	CLASS	DWG NO.
B	32108	SD	831249-00E0
SCALE/NA	CAT. CODE	SHEET 1 OF 4	

CHARGER

BUCK

BOOST

MAIN BOARD

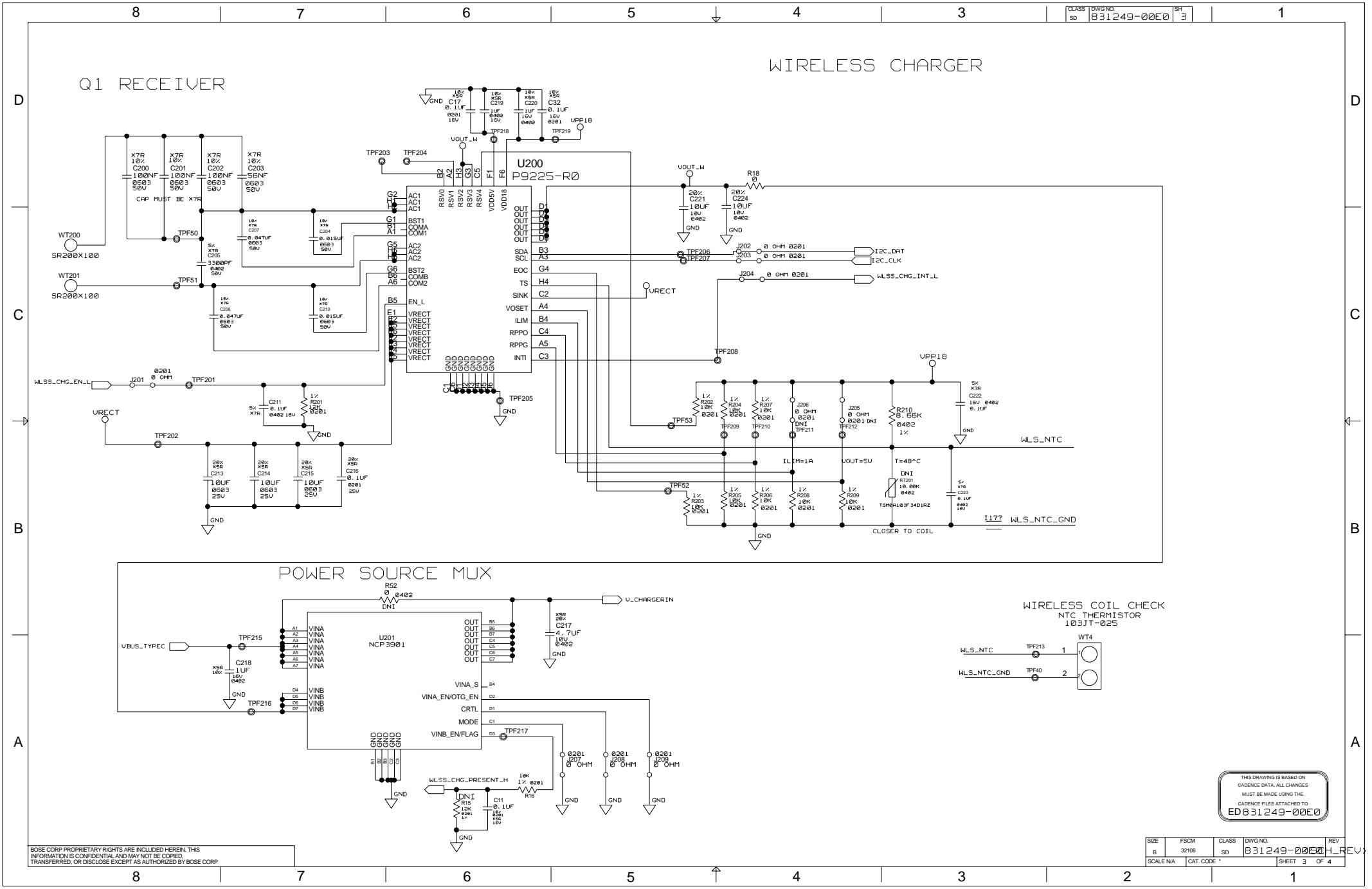


THIS DRAWING IS BASED ON CADENCE DATA. ALL CHANGES MUST BE MADE USING THE CADENCE FILES ATTACHED TO ED 831249-00E0

SIZE	FSCM	CLASS	DWGNO.	REV
B	32108	SD	831249-00E0	1
SCALE NA	CAT CODE *		SHEET 2	OF 4

WIRELESS CHARGER

Q1 RECEIVER

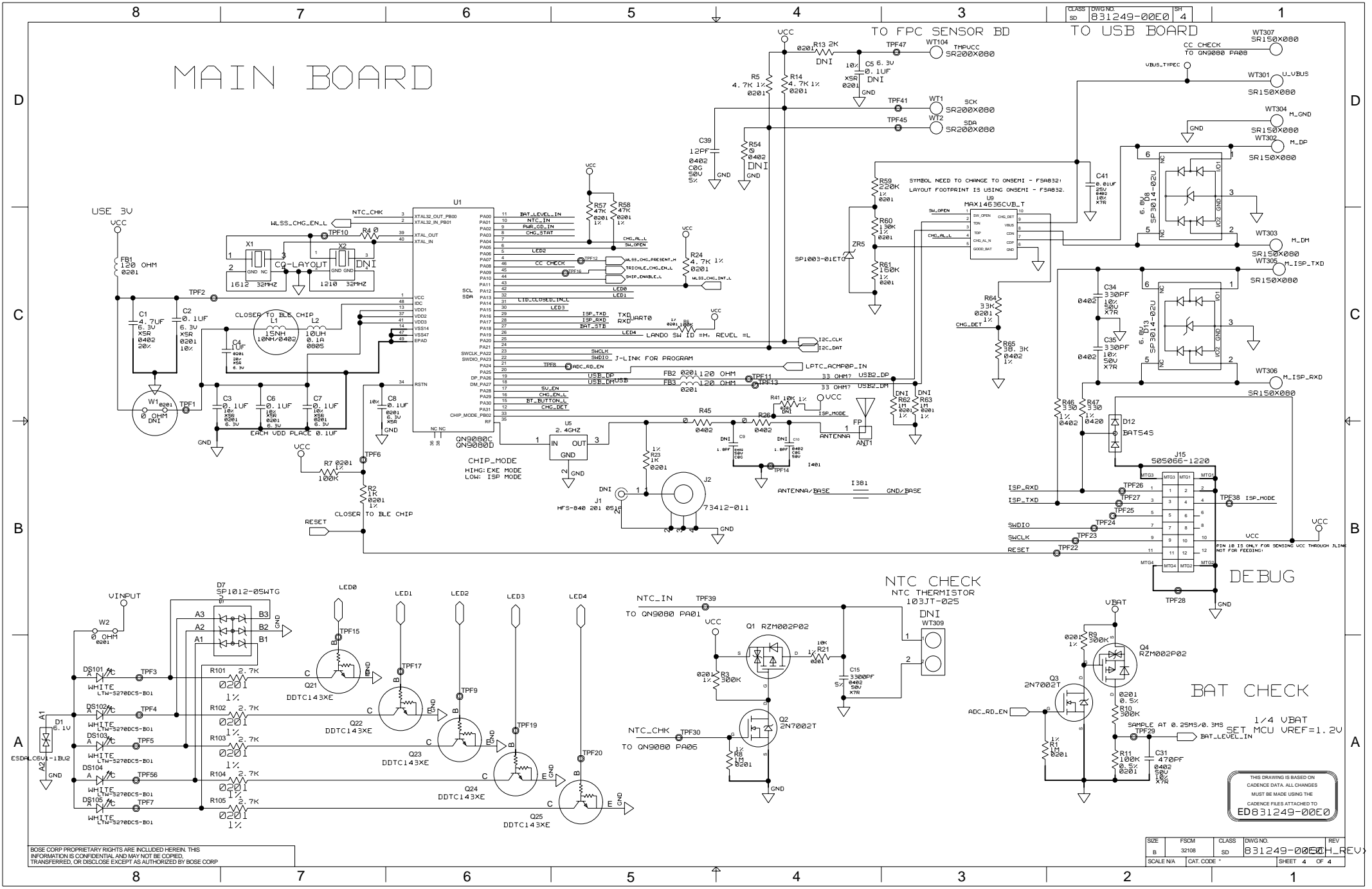


THIS DRAWING IS BASED ON CADENCE DATA. ALL CHANGES MUST BE MADE USING THE CADENCE FILES ATTACHED TO ED831249-00E0

BOSE CORP PROPRIETARY RIGHTS ARE INCLUDED HEREIN. THIS INFORMATION IS CONFIDENTIAL AND MAY NOT BE COPIED, TRANSFERRED, OR DISCLOSE EXCEPT AS AUTHORIZED BY BOSE CORP

SIZE	FSCM	CLASS	DWG NO.	REV
B	32108		831249-00E0	
SCALE NA	CAT CODE *		SHEET 3	OF 4

MAIN BOARD



THIS DRAWING IS BASED ON CADENCE DATA. ALL CHANGES MUST BE MADE USING THE CADENCE FILES ATTACHED TO EDB31249-00E0

SIZE	FSCM	CLASS	DWG NO.	REV
B	32108	SD	831249-00E0	4
SCALE NA	CAT CODE *			SHEET 4 OF 4