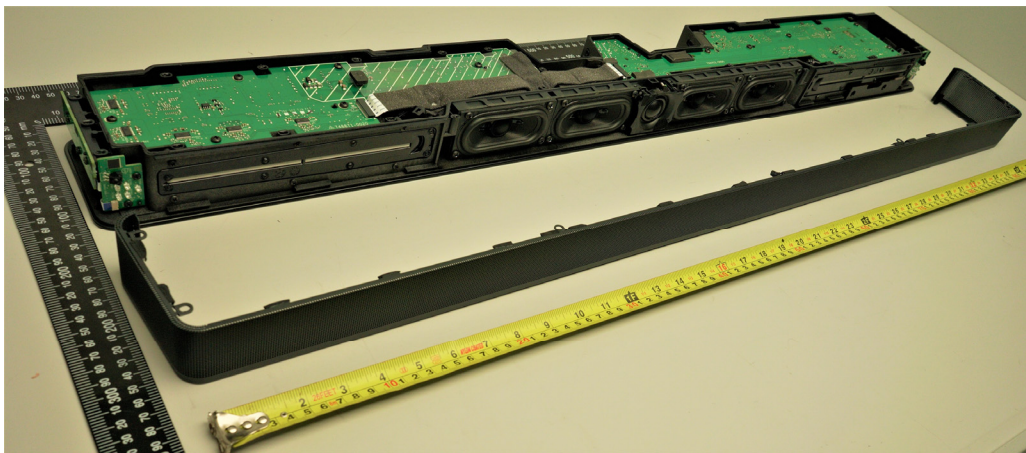
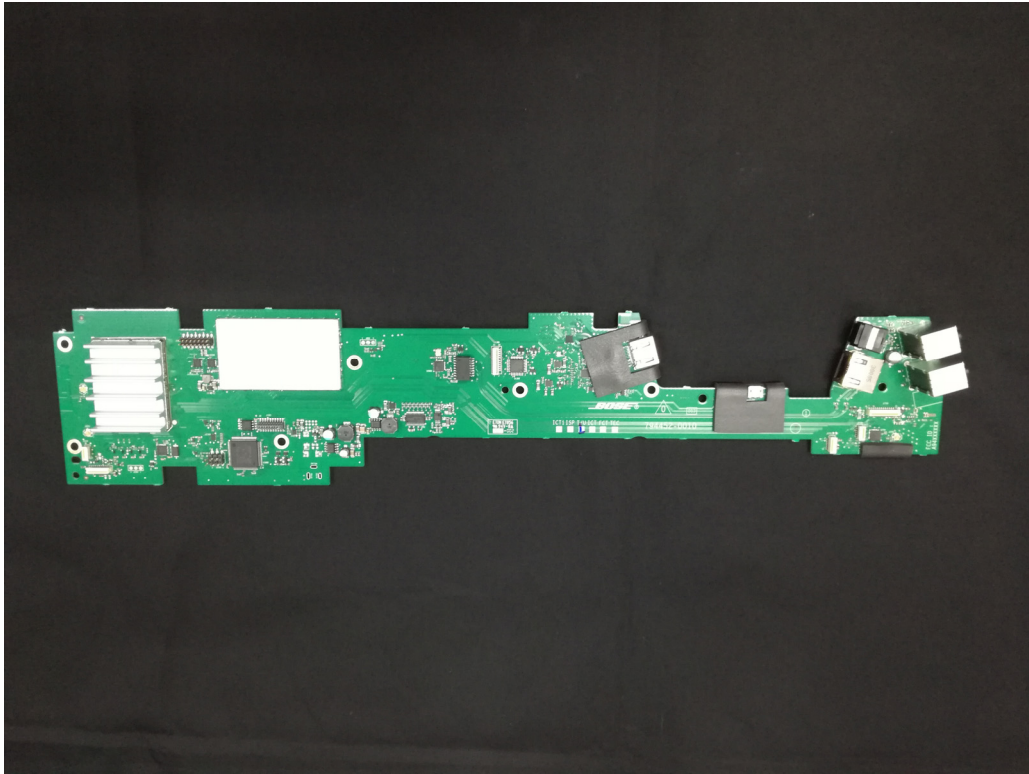


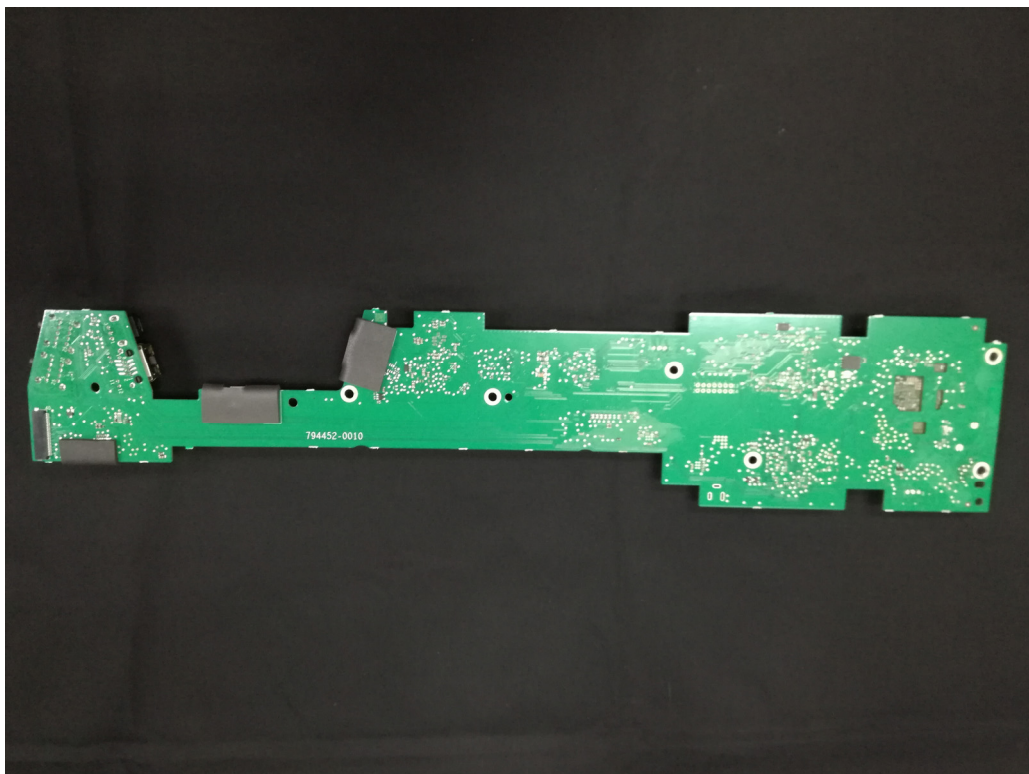
**Bottom Cover Removed**



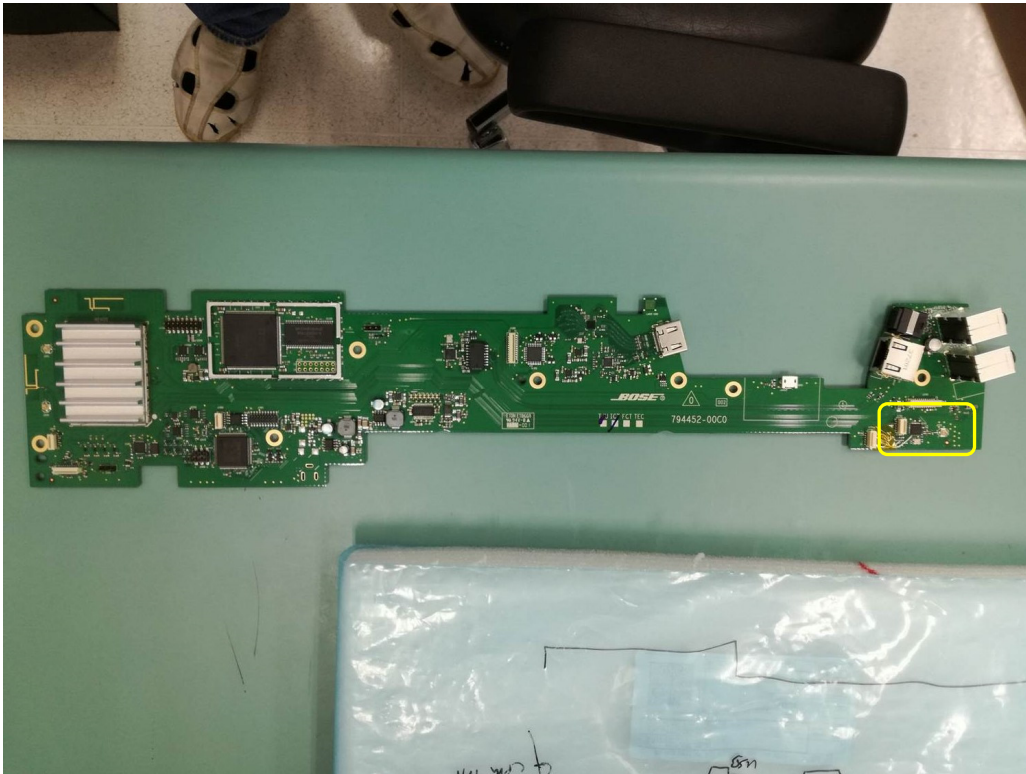
**Front Metal Grille Removed**



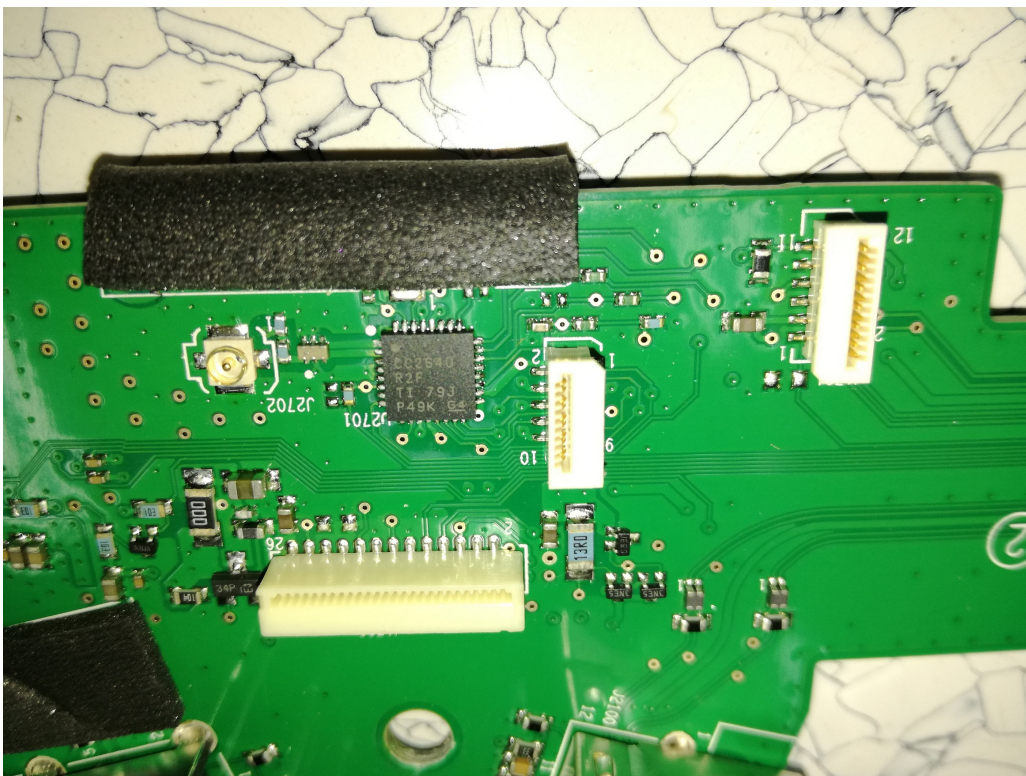
**PCB board\_Top**



**PCB board\_Bottom**



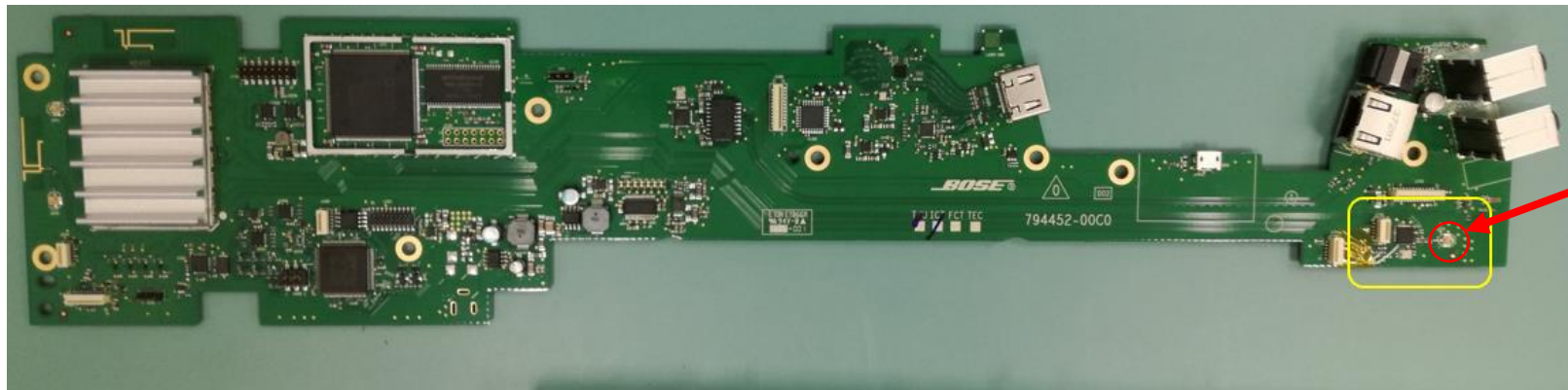
Radio Chipset Location



RF part

Bose Model 425842

BLE Radio (in **YELLOW BOX**) and Antenna Location (in **RED CIRCLE**)



RF connector  
to Antenna

BLE Antenna – stick on the Unit internal cabinet/body

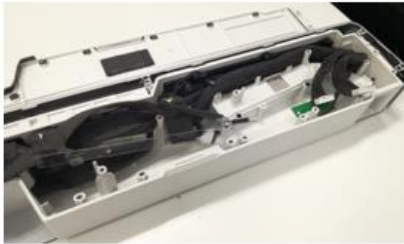


## Antenna Location

Product Facing Down Position



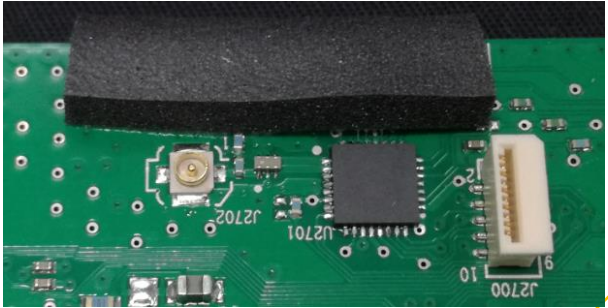
Antenna Location



Antenna is secured on the product cabinet with adhesive

# Internal Photo - Model 425842

Main PCB (Contains TI CC2640R2F)



Certified Module 424821  
Cert#:  
FCC : A94424821  
IC: 3232A-424821  
Certified module is being used without changes to antenna type or gain

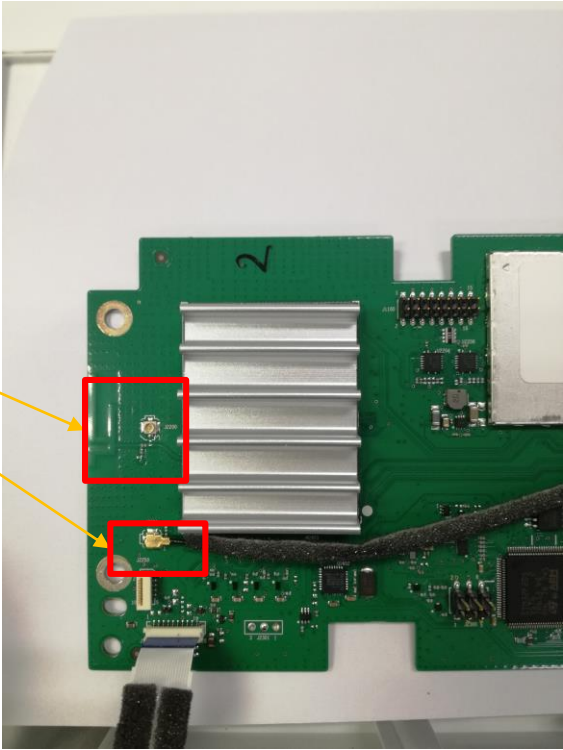
Certified Module 420128RM  
Cert#:  
FCC : A94420128RM  
IC: 3232A-420128RM  
Certified module is being used without changes to antenna type or gain



Certified Module 420128RM  
Antenna Locations



425842



424821 Antenna Locations