

VOW PCB 1ED4B18A00401
0-508-759-04

ANALOG DEVICES
ADSP-21365
WSQZ-2A
780953.1-0.4
#0546
SHARC

ANALOG DEVICES
ADSP-9853
657480.1-0.4
#0611 SINGAPORE

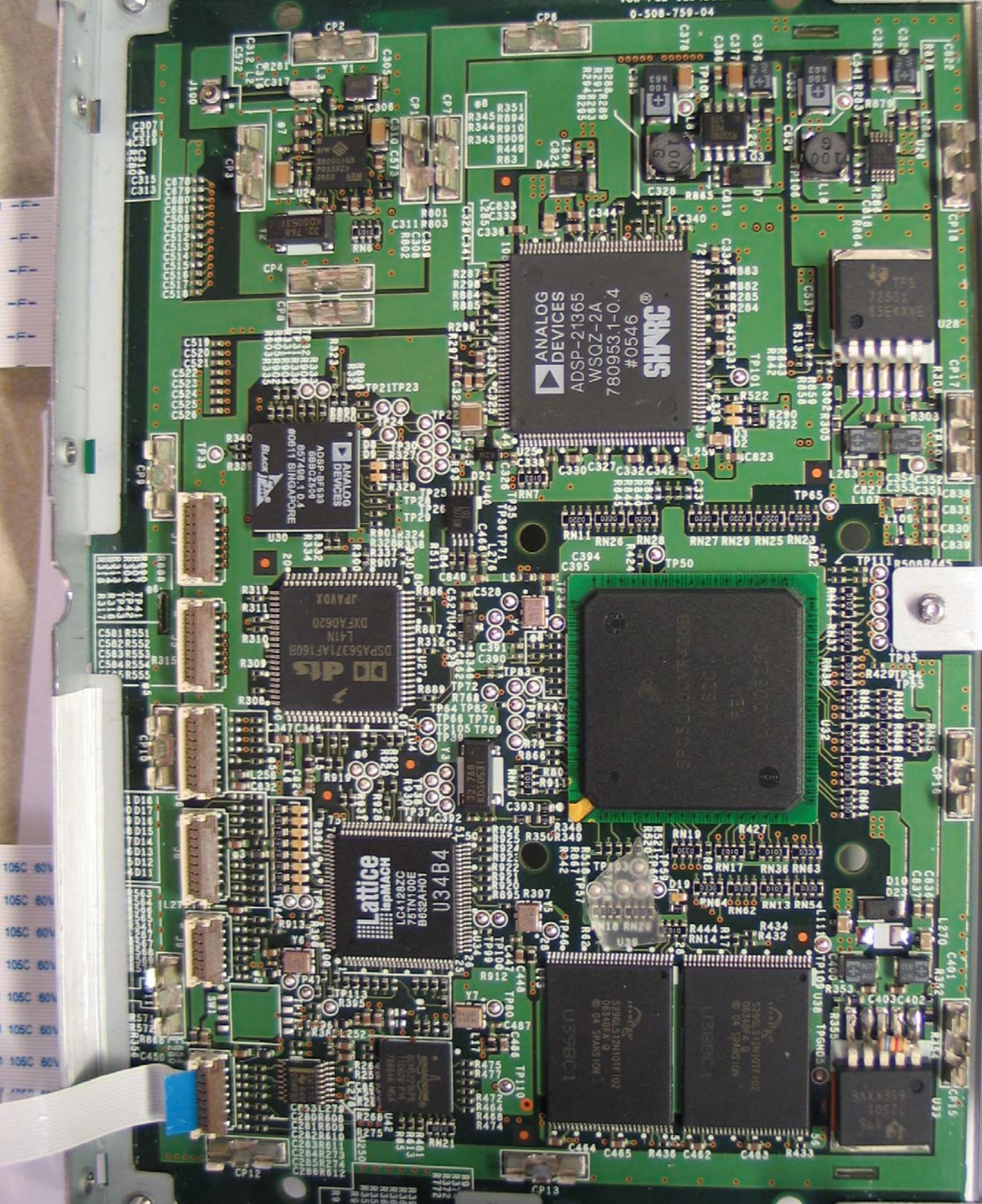
TI
DSPA5637AF1608
L41N
JPAVX

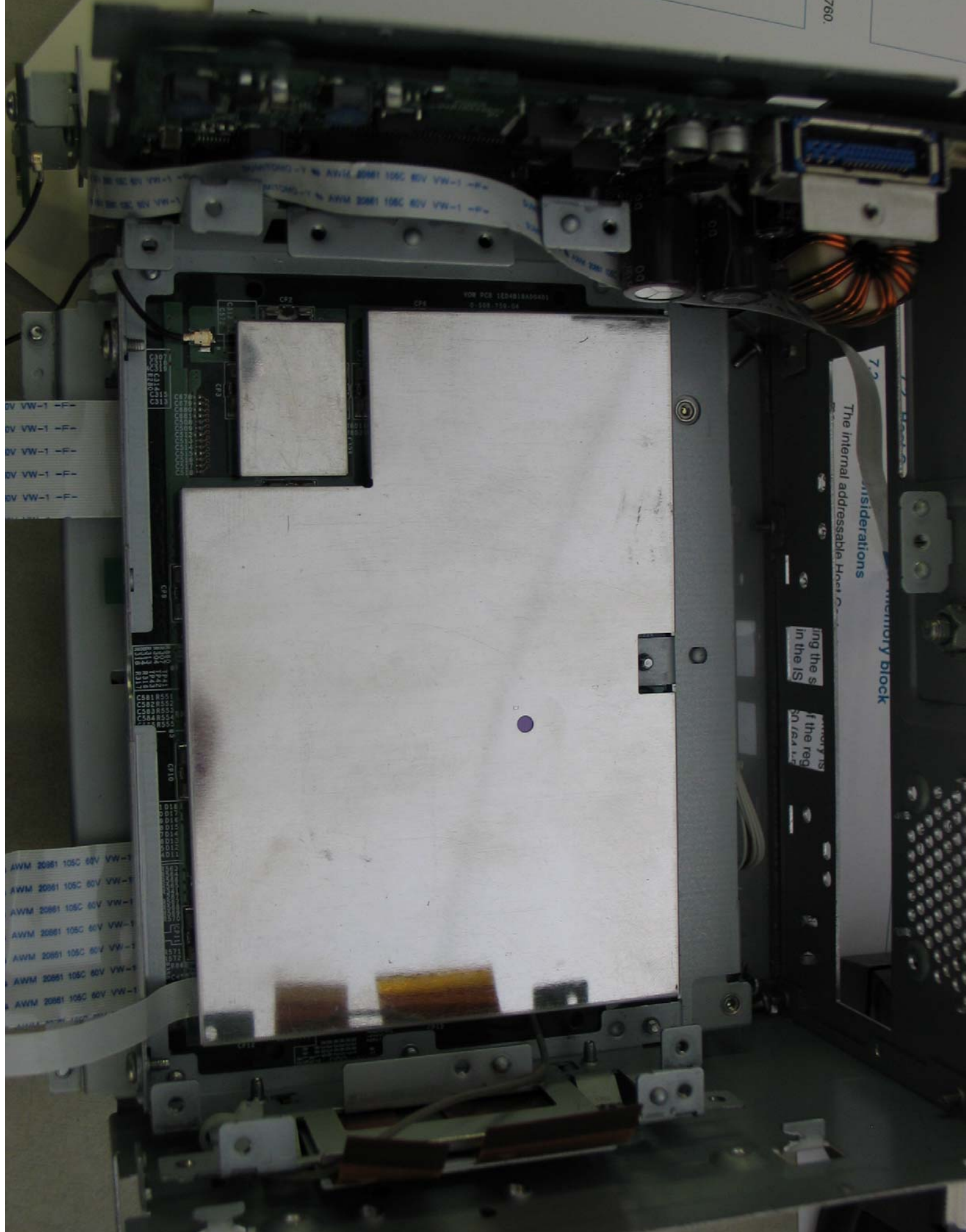
Lattice
InpIMACH
U34B4
LC41282C
75T1100E
B832AH01

LSI
S226132100T102
DESIGNER'S CHOICE
© STANSON

LSI
S226132100T102
DESIGNER'S CHOICE
© STANSON

105C 80V
105C 80V
105C 80V
105C 80V
105C 80V
105C 80V





AWM 20861 105C 80V VW-1
AWM 20861 105C 80V VW-1
AWM 20861 105C 80V VW-1
AWM 20861 105C 80V VW-1
AWM 20861 105C 80V VW-1
AWM 20861 105C 80V VW-1
AWM 20861 105C 80V VW-1
AWM 20861 105C 80V VW-1

6V VW-1 -F-
6V VW-1 -F-
6V VW-1 -F-
6V VW-1 -F-
6V VW-1 -F-

AWM 20861 105C 80V VW-1
AWM 20861 105C 80V VW-1
AWM 20861 105C 80V VW-1
AWM 20861 105C 80V VW-1
AWM 20861 105C 80V VW-1
AWM 20861 105C 80V VW-1
AWM 20861 105C 80V VW-1
AWM 20861 105C 80V VW-1

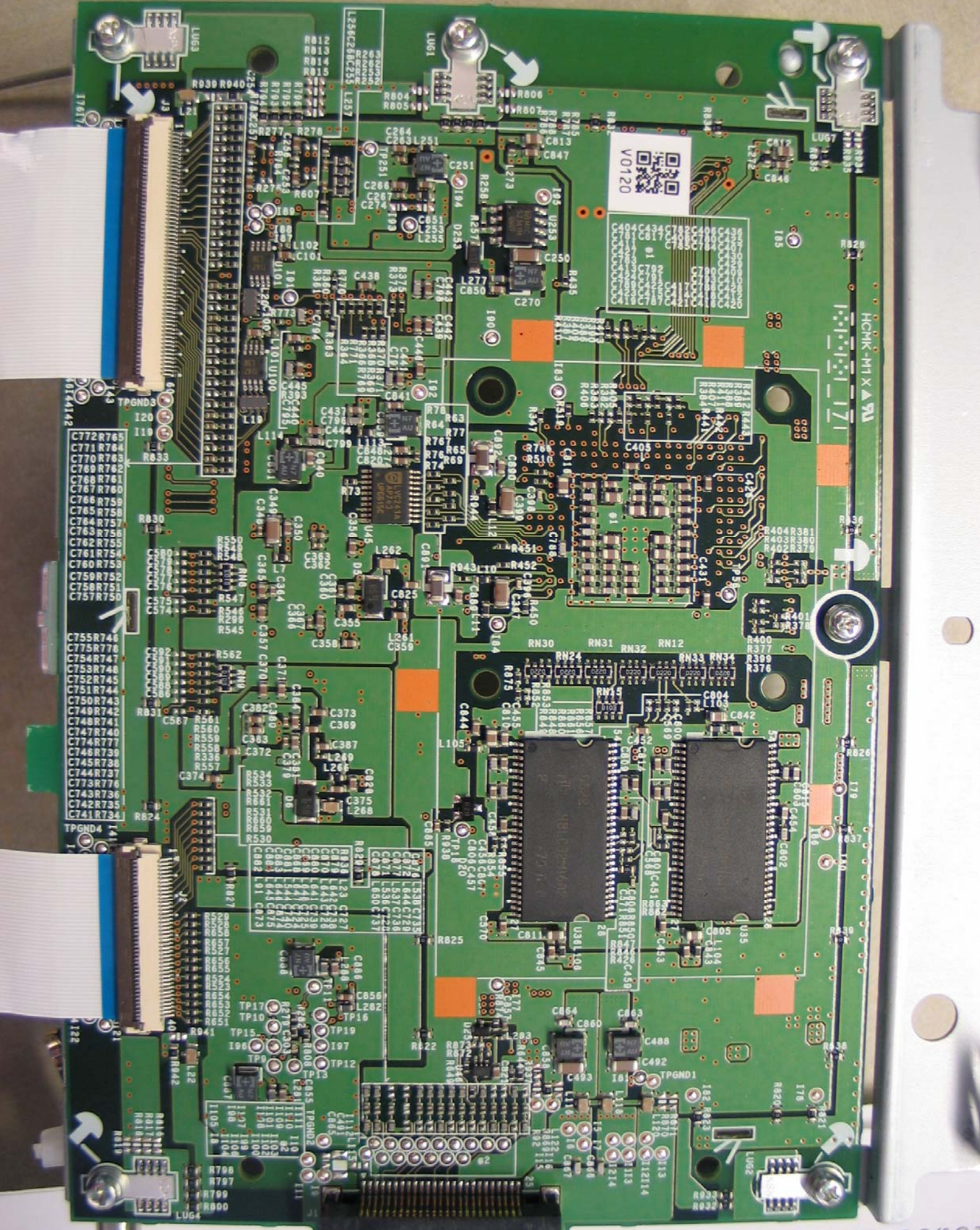
VOM PCB 122481(8A0645)
0-509-710-04
CF1
CF2
CF3
CF4
CF5
CF6
CF7
CF8



7.2
The internal addressable Heat C...
memory block
considerations

ing the s
in the IS
f the reg
20/64 1.5





C772R765
C771R744
C770R743
C769R742
C768R761
C767R760
C766R759
C765R758
C764R757
C763R756
C762R755
C761R754
C760R753
C759R752
C758R751
C757R750

C755R746
C775R776
C754R747
C753R748
C752R745
C751R744
C750R743
C749R742
C748R741
C747R740
C774R777
C746R739
C745R738
C744R737
C773R776
C743R736
C742R735
C741R734

R330 R331 R332 R333 R334 R335 R336 R337 R338 R339 R340 R341 R342 R343 R344 R345 R346 R347 R348 R349 R350 R351 R352 R353 R354 R355 R356 R357 R358 R359 R360 R361 R362 R363 R364 R365 R366 R367 R368 R369 R370 R371 R372 R373 R374 R375 R376 R377 R378 R379 R380 R381 R382 R383 R384 R385 R386 R387 R388 R389 R390 R391 R392 R393 R394 R395 R396 R397 R398 R399 R400 R401 R402 R403 R404 R405 R406 R407 R408 R409 R410 R411 R412 R413 R414 R415 R416 R417 R418 R419 R420 R421 R422 R423 R424 R425 R426 R427 R428 R429 R430 R431 R432 R433 R434 R435 R436 R437 R438 R439 R440 R441 R442 R443 R444 R445 R446 R447 R448 R449 R450 R451 R452 R453 R454 R455 R456 R457 R458 R459 R460 R461 R462 R463 R464 R465 R466 R467 R468 R469 R470 R471 R472 R473 R474 R475 R476 R477 R478 R479 R480 R481 R482 R483 R484 R485 R486 R487 R488 R489 R490 R491 R492 R493 R494 R495 R496 R497 R498 R499 R500 R501 R502 R503 R504 R505 R506 R507 R508 R509 R510 R511 R512 R513 R514 R515 R516 R517 R518 R519 R520 R521 R522 R523 R524 R525 R526 R527 R528 R529 R530 R531 R532 R533 R534 R535 R536 R537 R538 R539 R540 R541 R542 R543 R544 R545 R546 R547 R548 R549 R550 R551 R552 R553 R554 R555 R556 R557 R558 R559 R560 R561 R562 R563 R564 R565 R566 R567 R568 R569 R570 R571 R572 R573 R574 R575 R576 R577 R578 R579 R580 R581 R582 R583 R584 R585 R586 R587 R588 R589 R590 R591 R592 R593 R594 R595 R596 R597 R598 R599 R600 R601 R602 R603 R604 R605 R606 R607 R608 R609 R610 R611 R612 R613 R614 R615 R616 R617 R618 R619 R620 R621 R622 R623 R624 R625 R626 R627 R628 R629 R630 R631 R632 R633 R634 R635 R636 R637 R638 R639 R640 R641 R642 R643 R644 R645 R646 R647 R648 R649 R650 R651 R652 R653 R654 R655 R656 R657 R658 R659 R660 R661 R662 R663 R664 R665 R666 R667 R668 R669 R670 R671 R672 R673 R674 R675 R676 R677 R678 R679 R680 R681 R682 R683 R684 R685 R686 R687 R688 R689 R690 R691 R692 R693 R694 R695 R696 R697 R698 R699 R700 R701 R702 R703 R704 R705 R706 R707 R708 R709 R710 R711 R712 R713 R714 R715 R716 R717 R718 R719 R720 R721 R722 R723 R724 R725 R726 R727 R728 R729 R730 R731 R732 R733 R734 R735 R736 R737 R738 R739 R740 R741 R742 R743 R744 R745 R746 R747 R748 R749 R750 R751 R752 R753 R754 R755 R756 R757 R758 R759 R760 R761 R762 R763 R764 R765 R766 R767 R768 R769 R770 R771 R772 R773 R774 R775 R776 R777 R778 R779 R780 R781 R782 R783 R784 R785 R786 R787 R788 R789 R790 R791 R792 R793 R794 R795 R796 R797 R798 R799 R800 R801 R802 R803 R804 R805 R806 R807 R808 R809 R810 R811 R812 R813 R814 R815 R816 R817 R818 R819 R820 R821 R822 R823 R824 R825 R826 R827 R828 R829 R830 R831 R832 R833 R834 R835 R836 R837 R838 R839 R840 R841 R842 R843 R844 R845 R846 R847 R848 R849 R850 R851 R852 R853 R854 R855 R856 R857 R858 R859 R860 R861 R862 R863 R864 R865 R866 R867 R868 R869 R870 R871 R872 R873 R874 R875 R876 R877 R878 R879 R880 R881 R882 R883 R884 R885 R886 R887 R888 R889 R890 R891 R892 R893 R894 R895 R896 R897 R898 R899 R900 R901 R902 R903 R904 R905 R906 R907 R908 R909 R910 R911 R912 R913 R914 R915 R916 R917 R918 R919 R920 R921 R922 R923 R924 R925 R926 R927 R928 R929 R930 R931 R932 R933 R934 R935 R936 R937 R938 R939 R940 R941 R942 R943 R944 R945 R946 R947 R948 R949 R950 R951 R952 R953 R954 R955 R956 R957 R958 R959 R960 R961 R962 R963 R964 R965 R966 R967 R968 R969 R970 R971 R972 R973 R974 R975 R976 R977 R978 R979 R980 R981 R982 R983 R984 R985 R986 R987 R988 R989 R990 R991 R992 R993 R994 R995 R996 R997 R998 R999 R1000

FOR
PR
OUT
ETC
AIG
PLE
IF YO
COL
CUS
SCH
CAN
FOL