

TI PROPRIETARY INFORMATION - Strictly Private	TEXAS INSTRUMENTS RFID SYSTEMS SPECIFICATION	Originator: C. Bohren
--	---	---------------------------------



Subco/Mfg

Reader Test Control Software Document

RX-STU-ETR1-00

<p align="center"> PRINTED COPIES OF THIS SPECIFICATION ARE NOT CONTROLLED DOCUMENTS. VERIFY THEIR CORRECT REVISION BEFORE USE. </p>

**Proprietary Information
Confidential**

Revision: 0	Page 1 of 7	XX-XX-XX-XXX
Reader Test Control Software Document		

TI PROPRIETARY INFORMATION - Strictly Private	TEXAS INSTRUMENTS RFID SYSTEMS SPECIFICATION	Revision: 0
--	---	----------------

TABLE OF CONTENTS	PAGE
1. Purpose.....	3
2. Hardware Test Set up.....	3
3. Test Software	3
3.1 Software Icon	4
3.2 Initial Start Screen.....	4
3.3 Reader RS232 / RS485 Communication Established.....	4
3.4 Test Start.....	5
3.5 Test Completion	6
4. Exploded View of Reader Assembly	7
5. Revision History.....	7

List of Figures

Figure 1: Hardware Set up	3
Figure 2: Reader RS232, RS485 and Power Connectors	3
Figure 3: Software Icon on PC desktop.....	4
Figure 4: Initial Start Screen	4
Figure 5: RS232 / RS485 Communication successful.....	5
Figure 6: Test Start	5
Figure 7: Test Completion	6
Figure 8: Exploded View of Reader Assembly	7

Printed copies are not controlled documents - verify the correct revision before use.

1. Purpose

The purpose of this document is to demonstrate the Test Control software for the RX-STU-ETR1-00 reader unit.

2. Hardware Test Set up

Connect the reader unit under test as shown in Figure 1 below.

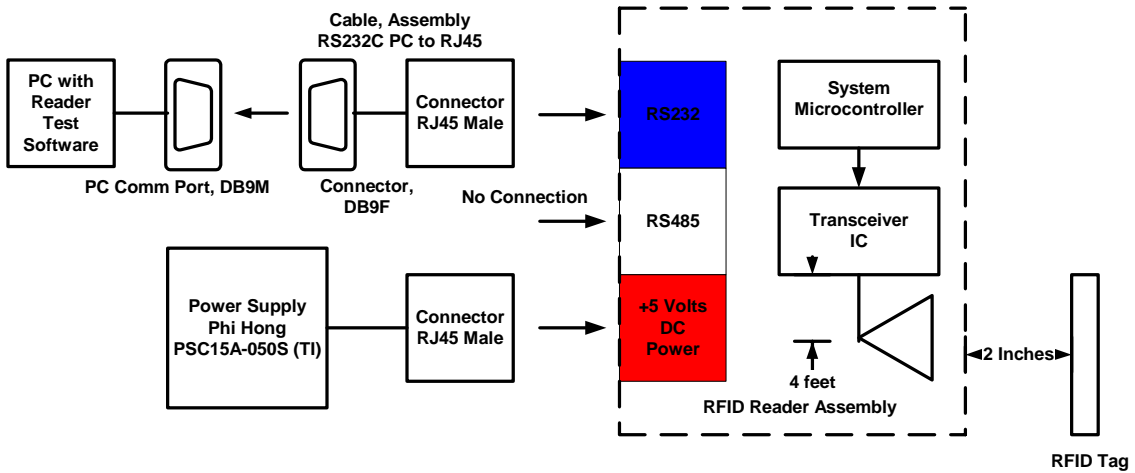


Figure 1: Hardware Set up



Figure 2: Reader RS232, RS485 and Power Connectors

3. Test Software

Select the TR Tool Software Icon on the PC to start the Reader Control software.

3.1 Software Icon



Figure 3: Software Icon on PC desktop

3.2 Initial Start Screen

Press “Connect Button” with Left mouse button to start reader communication with the PC.

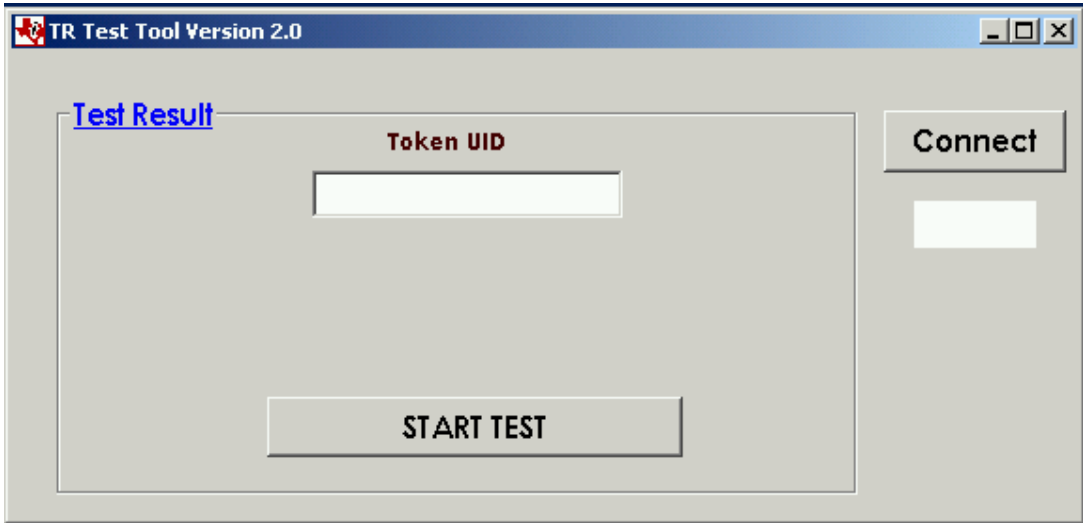


Figure 4: Initial Start Screen

3.3 Reader RS232 / RS485 Communication Established

When the white box below the connect button becomes “Green” and the “Connect” Button changes from “Connect “ to “Disconnect” RS232/ RS485 Communication is established.

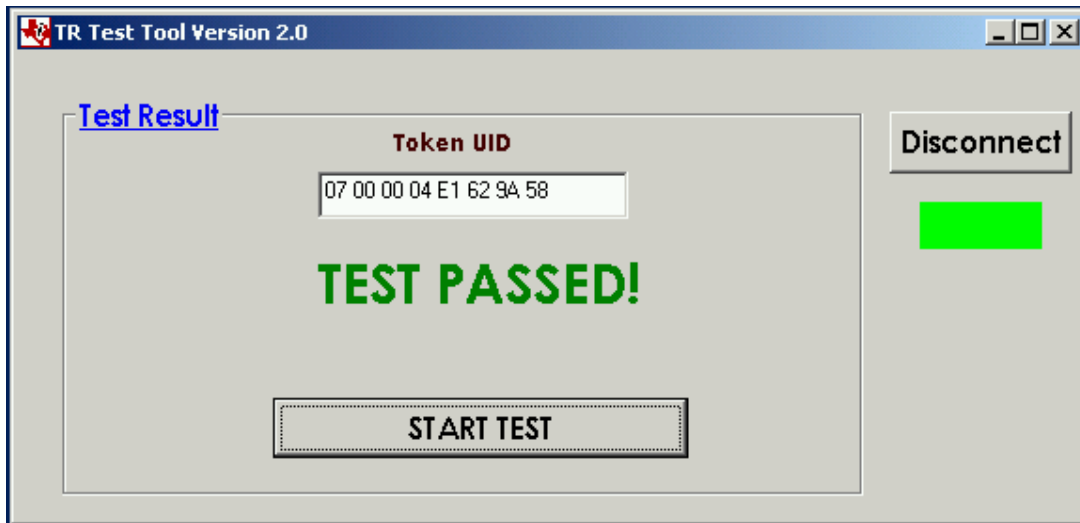


Figure 5: RS232 / RS485 Communication successful

3.4 Test Start

- 1) Press "Start Test" Button
- 2) Unit Serial Number Box Appears
- 3) Enter 4 digit unit Serial Number
- 4) Press "OK" Button

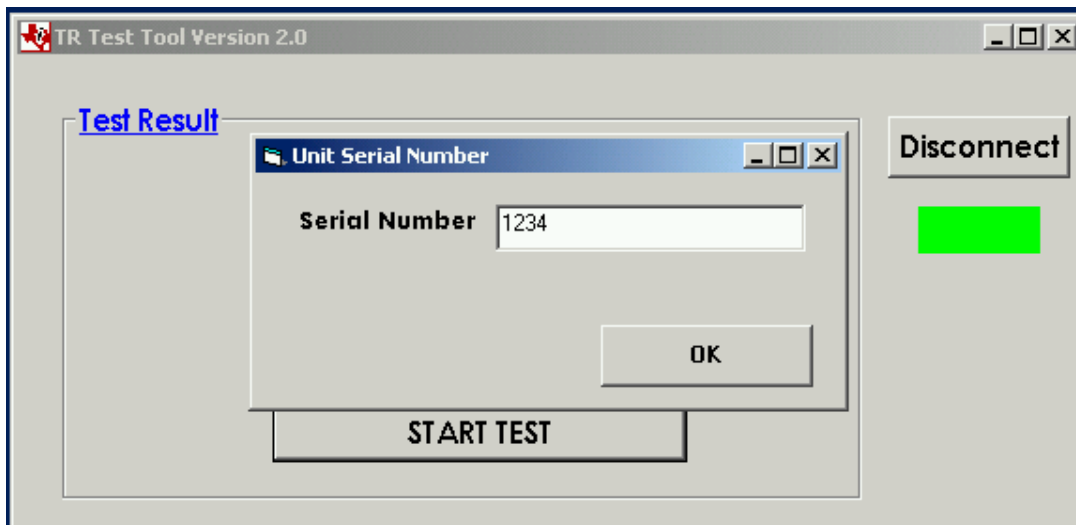


Figure 6: Test Start

3.5 Test Completion

If the test box of Figure 7 below appears Test is successful.

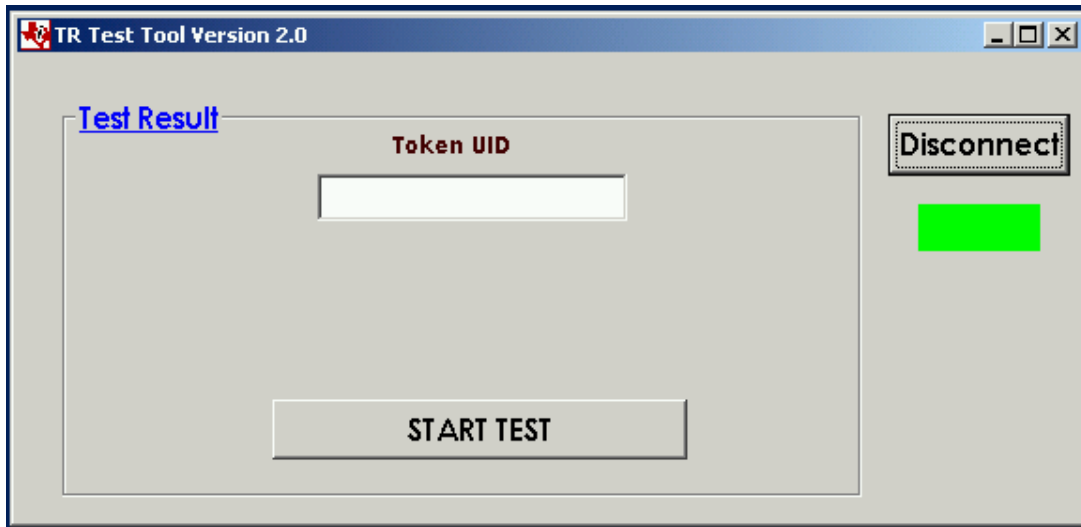


Figure 7: Test Completion

Note: The reader unit transmitter remains in the “ON” state after successful test completion.

4. Exploded View of Reader Assembly

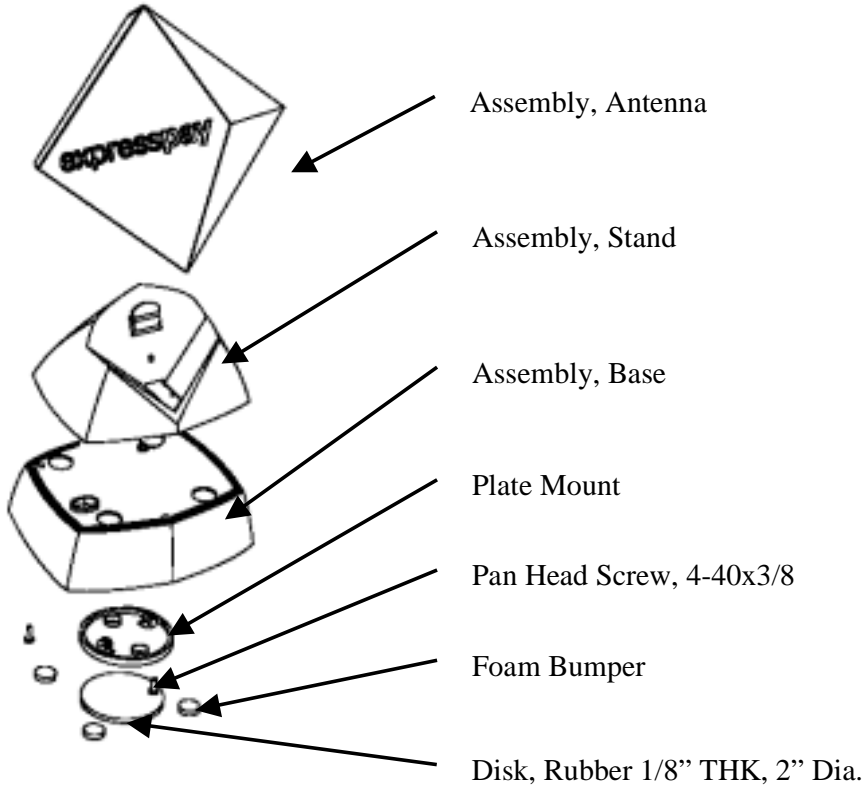


Figure 8: Exploded View of Reader Assembly

5. Revision History

Rev.	SCN	Description of Change	Date submitted	By
0		New Issue	01/10/2003	C. Bohren