



權億科技股份有限公司
Master Wave Technology Co., Ltd.

承認書

APPROVAL SHEET

Customers: 神準科技股份有限公司

Customer Model No.:

Master Wave Model No. 98615UNXX006

Product Description: 8615 Outdoor Antenna

Issue Date: 2014/11/27

REV.: 00

客戶承認用印		權億承認用印	
			
核准 Approve	主管 Chief	承辦 Responsible	
Hero	Matt	Haley	

MASTER WAVE TECHNOLOGY CO., LTD.

權億科技股份有限公司

Address: No.81-8, Longshou St., Taoyuan City, Taoyuan County 330, Taiwan (R.O.C.)

Tel: +886-3-3600306 Fax: +886-3-3600979

Shengyih Electronic Plastic Co. Ltd (Shou Zhou)

聲億電子塑膠有限公司(蘇州廠)

Address: No.95 Wusong south Rd of Luzhi Town Wu zhong Area Suzhou City, China

Tel : +86-512-65046030 Fax : +86-512-65046033

Shengyih Electronic Plastic Manufactory (Dongguan)

聲億電子塑膠製品廠(東莞廠)

Address: Mu-Lun Administration Area, Changping Town, Dongguan City, Guangdong Province, China

Tel : +86-769-83914045 Fax : +86-769-83914046



Table of Contents

Item

1. Antenna Specifications

-Drawing

2. Test Report

-Electrical test

-Pattern test

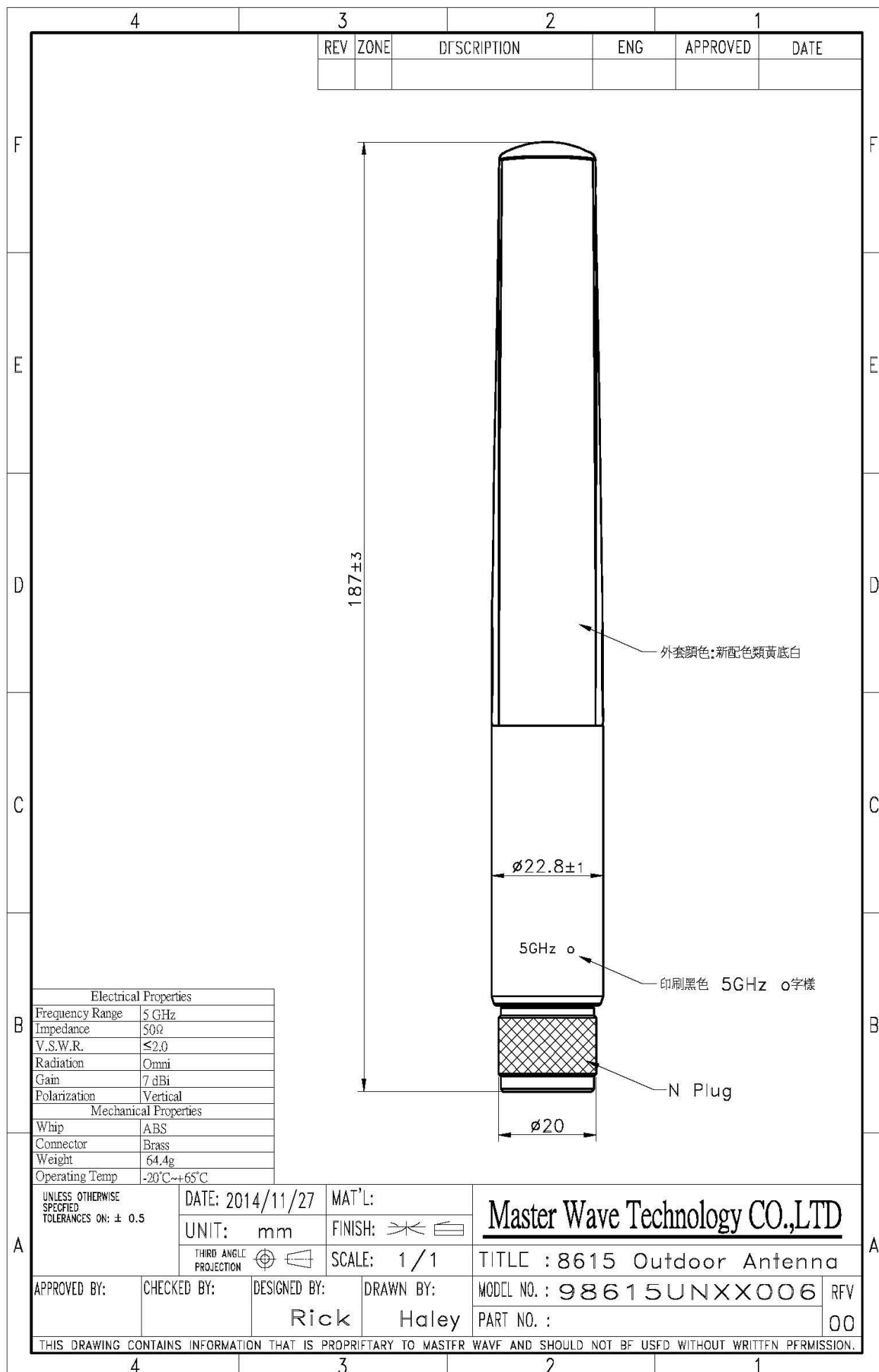
-Efficiency

3. Material Certifications

-Connector

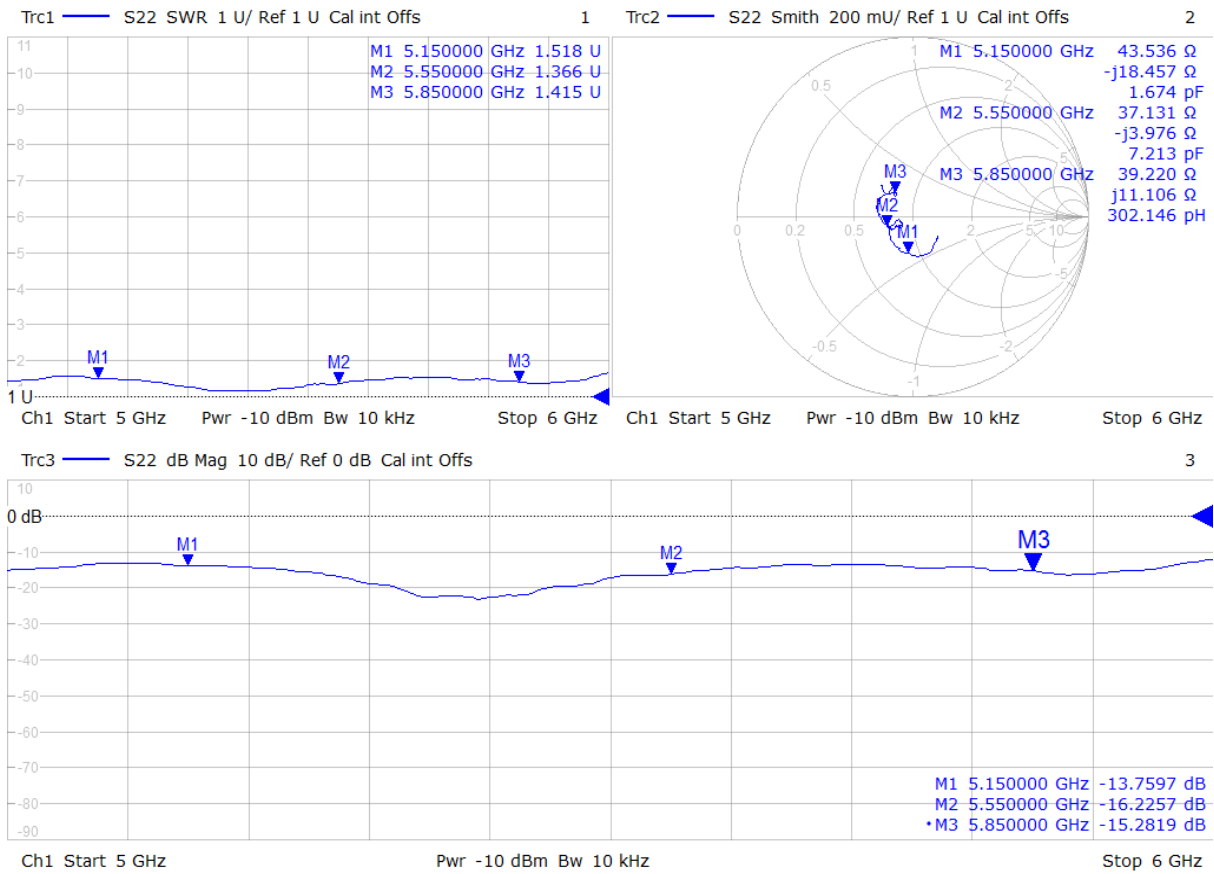
Modification History:

REV.	Date	Content
00	2014/11/27	



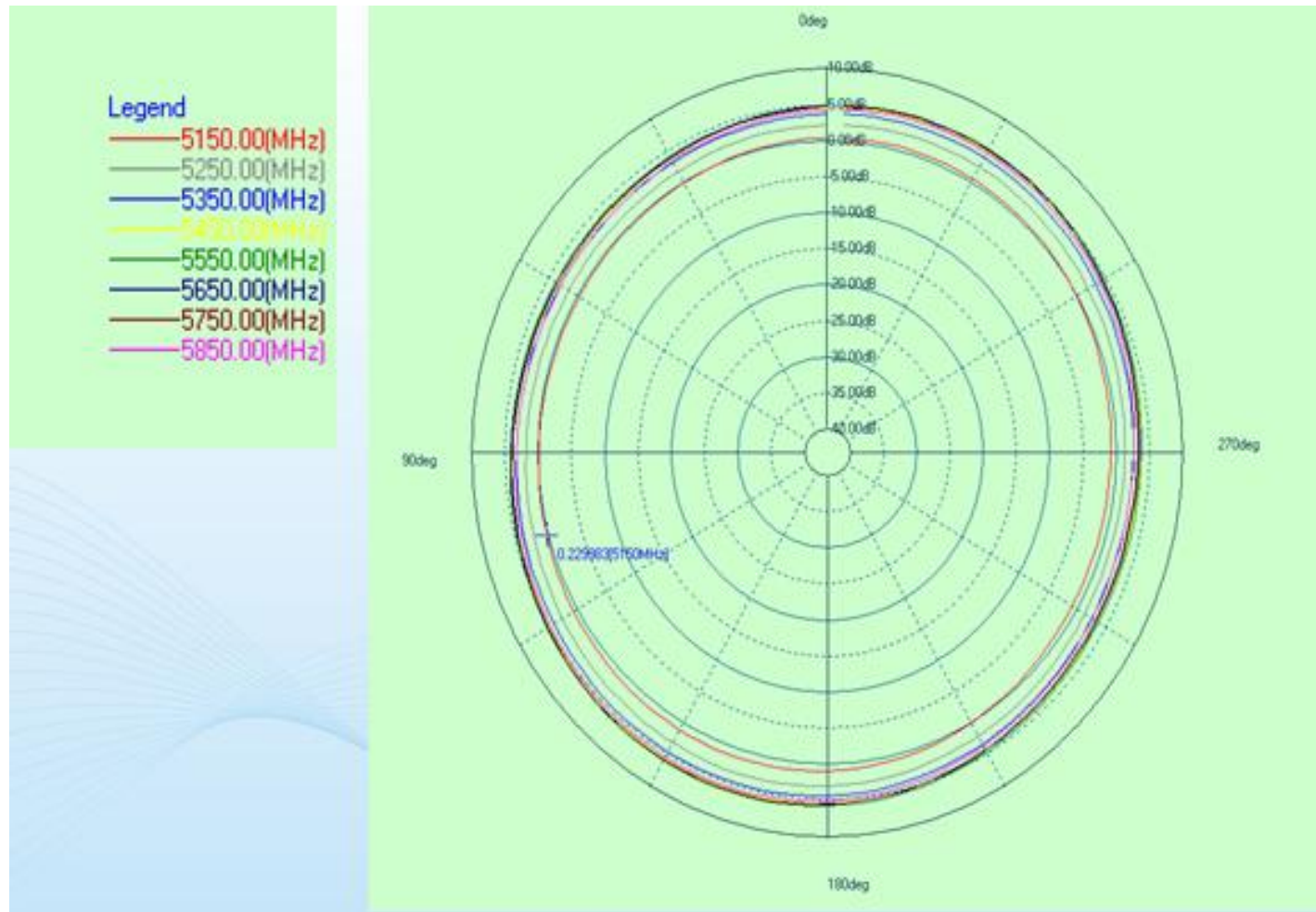


Electrical Test



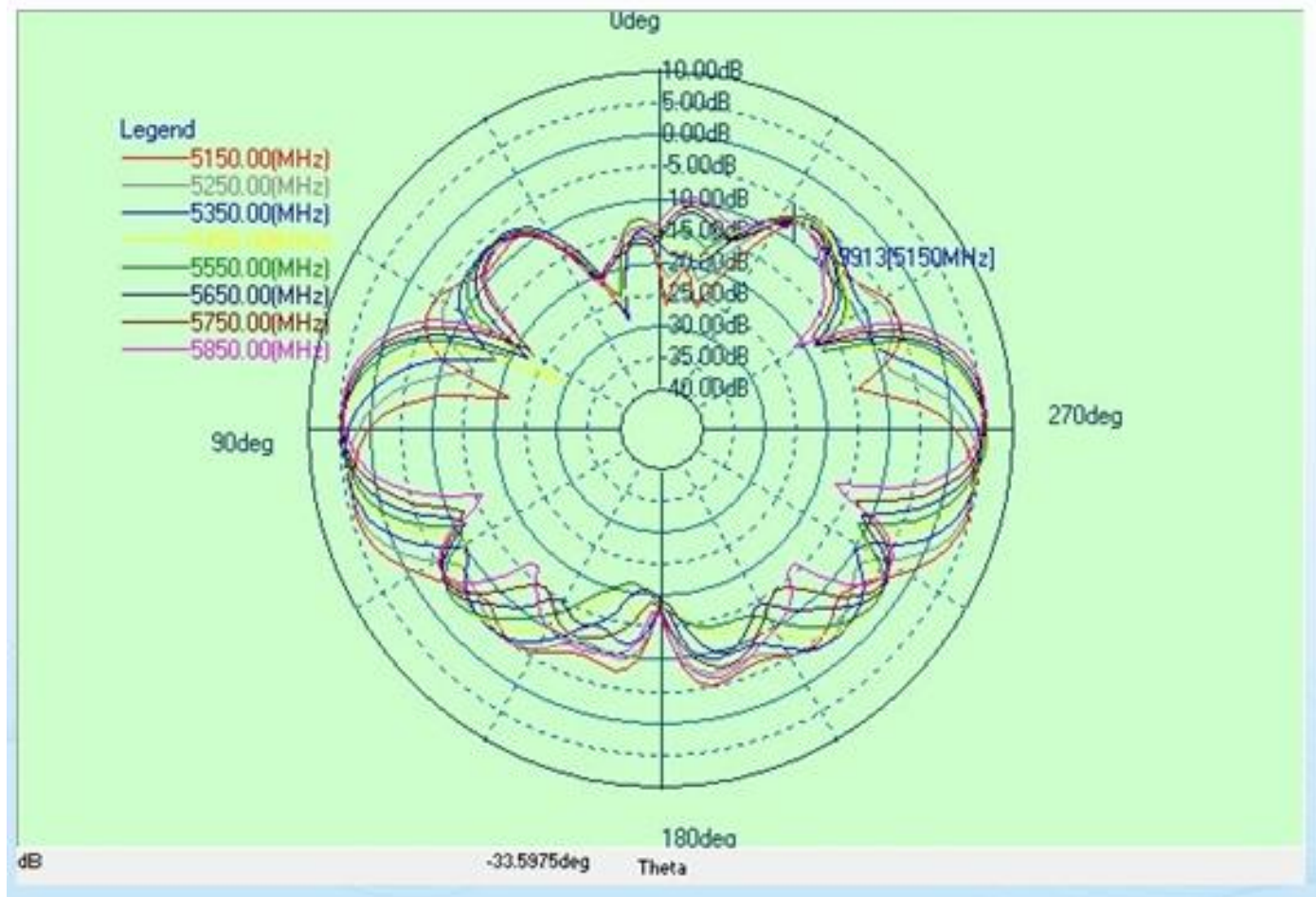


2D Radiation Pattern H-Plane





2D Radiation Pattern E-Plane





Antenna Efficiency

Frequency (MHz)	5150	5250	5350	5450	5550	5650	5750	5850
Peak Gain (dBi)	4.90	5.06	5.39	5.80	6.12	5.79	5.87	5.86
Directivity (dBi)	6.99	7.08	7.27	7.51	7.74	7.68	7.93	8.08
Efficiency (dB)	-2.09	-2.02	-1.88	-1.71	-1.62	-1.89	-2.06	-2.22
Efficiency (%)	61.80	62.84	64.87	67.48	68.87	64.68	62.24	60.02



Connector

N

Electrical Properties	Impedance	50 ohm
	Frequency Range	0~6 GHz
	V.S.W.R	≤ 1.5
	Working Voltage	≤ 1000 Vrms
	Dielectric Withstanding	≤ 2500 Vrms
	Voltage Insulation Resistance	≥ 5000 Megohms
	Contact Resistance	Center contact: 1.0 Milliohms (Max.) Outer contact: 1.0 Milliohms (Max.)
	Recommended coupling nut torque	6.0~10.0 in. lbs (0.68~1.13Nm)
	Coupling nut retention force	≥ 100 lbs (445N)
	Contact captivation axial	≥ 6.2 lbs (27.6N)

Operating Temperature	-65°C ~ +165°C
-----------------------	----------------

Material Specifications	Material Data	Material
	Body	Brass
	Center Contact	Brass
	Insulator	Teflon