

English

Caution:

Please read the following instructions carefully:

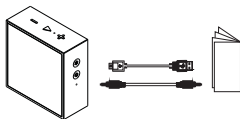
- Please follow our product installation and operation instructions.
- Always place the speaker on a smooth and stable surface.
- Please place the speaker on an open area for the best sound quality. Do not block the surroundings of the speaker.
- Do not push any objects into speaker vents or slots. Do not apply any great force on the speaker
- Please keep the speaker at a room temperature environment. Do not please the speaker near any heat sources (such as radiators, heat registers, stoves, fire place, or direct sunlight). Do not place the speaker near any open flame source.
- Do not attempt to service the speaker by yourself. Always refer to the instructions by qualified service personnel.
- To avoid the risk of electrical hazard, do not expose this speaker to water or wet surface.

Welcome:

Thank you for purchasing this Divoom® product. TimeBox-Mini is a smart music gadget beyond your imagination. It is a Bluetooth speaker, a lamp, a digital palette, an alarm clock all in one, and it waits for your exploration. Inspired by light and sound, try this box of wonder and fun

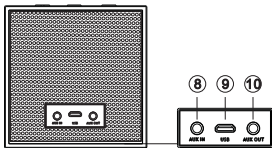
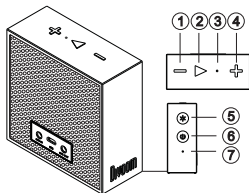
What's in the box?

- 1 pc of TimeBox – Mini
- 1 pc of USB Recharging Cable
- 1 pc of 3.5mm Audio Cable
- 1 pc of User Manual



Buttons

- 1.Press: Decrease volume
Hold: Previous song
- 2.Press: Play/Pause/Answer/End Call
Hold: Record voice message
- 3.Microphone
- 4.Press: Increase volume
Hold: Next song
- 5.Press: Change modes
Hold: Change light effects
- 6.Press: Show battery level
Hold: Power ON/OFF
- 7.Reset
- 8.AUX in
- 9.Micro-USB charging port
- 10.Aux out



Connecting and Using TimeBox

- 1) Download the "Divoom App from App Store® or Google Play®
- 2) Please connect/pair with the speaker in the device's Settings/Bluetooth. For iOS, the process requires an extra step (Please launch the Divoom app, and select "TimeBox-mini-light" to pair)
- 3) You can use Divoom App to do the following:
 - Automatically sync with clock and time zone on your mobile phone
 - Stream music from your mobile device to the TimeBox-Mini via Bluetooth
 - Play songs from your phone and adjust the speaker volume
 - Choose different drawing patterns from the Gallery or create your own.
 - Set your custom sleep or wake up timers with preset scenery or your music and lighting
 - Customize the notification settings to alert a social media update
 - Enjoy an exclusive private chat with your friend/family
 - Improve the time management by setting reminder for the important daily routines

To switch your current connected device to another Bluetooth device, please follow these steps

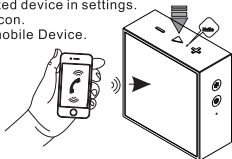
1. Launch the Divoom app and change the connected device in settings.
2. The LED display panel will flash the Bluetooth icon.
3. Search and pair the TimeBox-Mini on the new mobile Device.

Hands-free

Press the Hands free button to pick up an incoming call.

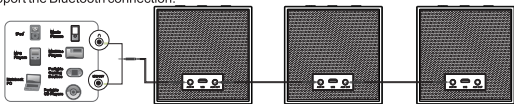
OR

Press and hold the Hands free button for 2 seconds to reject an incoming call



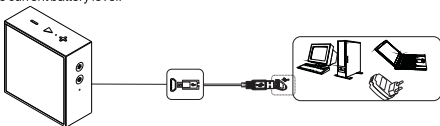
Non-Bluetooth devices

Please connect the 3.5mm Auxiliary cable (provided) between the Timebox Aux-in port and the music source device. You can daisy-chain multiple TimeBox (in AUX mode) together via their Aux-out and Aux-in ports. The daisy-chain function does not support the Bluetooth connection.



How to charge the speaker?

This speaker can be charge by most computer USB port and AC adaptor. The charging time may vary by the specification of the charging port/adaptor. A full charge will usually take 3~4 hours. To access the current battery level: Please press the power button, and the LED screen will display the current battery level.



How to record a voice message on the TimeBox-Mini?

You can record a voice message via the following methods:

- Using the Divoom app, please select Voice Memo and start recording
 - Hold the play button until the record icon appear, then press the same button again to finish recording
- Once a voice message is recorded, a message icon will appear on the TimeBox-mini screen, and you can press play button to playback the recorded message. The message will remain until it has been played. Once played, the message will be deleted automatically.

LED display effect

Press the light button to switch between the different light modes, and hold the light button to change Effects.

Search 'Divoom' on app store, and install the app to access all functions on your TimeBox-mini.



Features

- All new private exclusive chat with your friend/family.
- Improve the time management by setting reminder for the important daily routines.
- Automatically sync with the clock and time zone on your mobile device, you don't have to adjust the time, ever.
- Over 30 preset sleep-aid programs for the best sleep experience, and always feel energetic when you wake up.
- Create a more detailed and vivid pixel art series with 121 Gem-style LED & full RGB colors
- Enjoy the world-class audio through the fine-tuned speaker, and the built-in MIC and advance notification system.
- Compact design for your office desktop, it's a digital clock and more

Specifications:

Dimensions: 90L*38W*91.2H mm

Weight: 292g

Driver size: 2" full range

Output power: 5W

Frequency Response: 60-20000Hz

Signal-to-Noise Ratio: 78 dB

Playback Time: up to 10 hours

Battery Capacity: 2500mAh

Charge time: 3-3.5hours

Battery Voltage: 3.7V


Charging: Via USB cable, 5V -1A


Bluetooth compliant: Bluetooth V4.0 smart

Wireless range: Up to 10 meters

Declaration of conformity and CE mark

This device meets the requirements of the following EC directive R&TTE 1999/5/EG:

 Directive 1999/5/EC of the European Parliament and of the Council of 9 March 1999 on radio equipment and telecommunications terminal equipment and the mutual recognition of their conformity

 The waste container symbol with the X through it on the device indicates that the device must be disposed of separately from normal domestic waste at an appropriate waste disposal facility at the end of its useful service life.

Limited Warranty

1. If within 12 months of purchase this device or any part thereof is proven to be defective by reason of faulty workmanship or defects in materials, we will at our option repair or replace the same free of charge of labor or materials on condition that:
 2. The original invoice or sales receipt with the date of purchase, or stamp from the dealer is presented together with the defective unit.
 3. The warranty does not cover product failures which have been caused by use of accessories other peripheral devices which are not DIVOOM branded original accessories intended for use with the product.
 4. The warranty does not cover product failures caused by:
Modification, repaired, and disassembled by any person who is not authorized by the manufacturer.
Any defective unit or part shall become property of the manufacturer. The warranty does not cover any damage caused by misuse, drop, hit or neglect.

This device complies with Part 15 of the FCC Rules. Operation is subject to the following two conditions:

- (1) this device may not cause harmful interference, and
- (2) this device must accept any interference received including interference that may cause undesired operation. changes or modifications not expressly approved by the party responsible for compliance could void the user's authority to operate the equipment.

NOTE: This equipment has been tested and found to comply with the limits for a Class B digital device pursuant to Part 15 of the FCC Rules. These limits are designed to provide reasonable protection against harmful interference in a residential installation. This equipment generates, uses and can radiate radio frequency energy and, if not installed and used in accordance with the instructions, may cause harmful interference to radio communications. However, there is no guarantee that interference will not occur in a particular installation. If this equipment does cause harmful interference to radio or television reception, which can be determined by turning the equipment off and on, the user is encouraged to try to correct the

interference by one or more of the following measures:

- Reorient or relocate the receiving antenna.
- Increase the separation between the equipment and receiver.
- Connect the equipment into an outlet on a circuit different from that to which the receiver is connected. Consult the dealer or an experienced radio/TV technician for help.