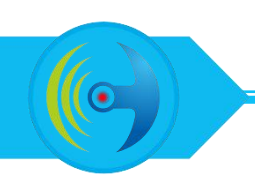


专业天线服务商

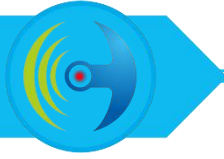
深圳市飞敏科技有限公司
SHENZHEN FEIMIN TECHNOLOGY CO.,LTD.



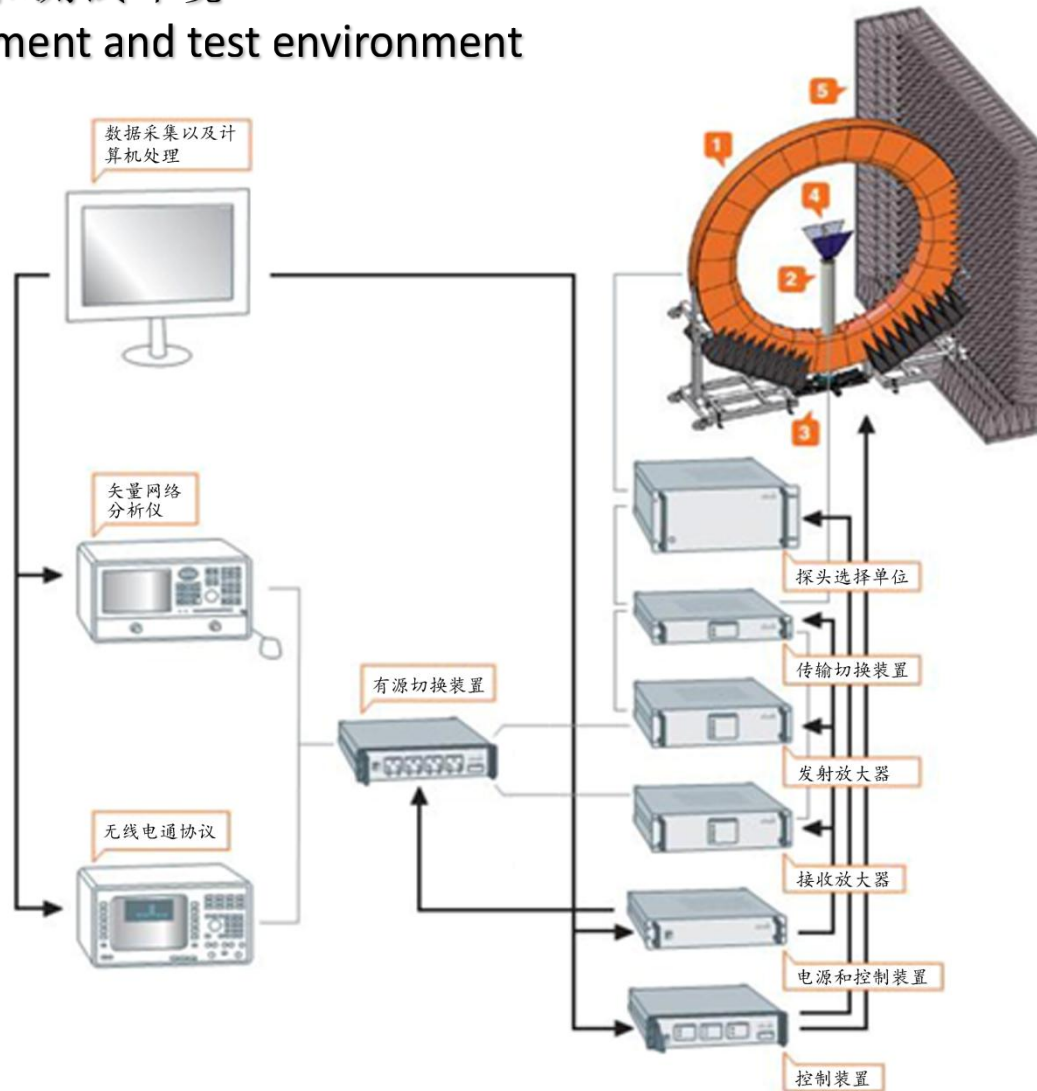
天线测试报告

Antenna test report

设备型号	话筒
天线型号	
设计	
审核	杨权生
日期	2023.4.27

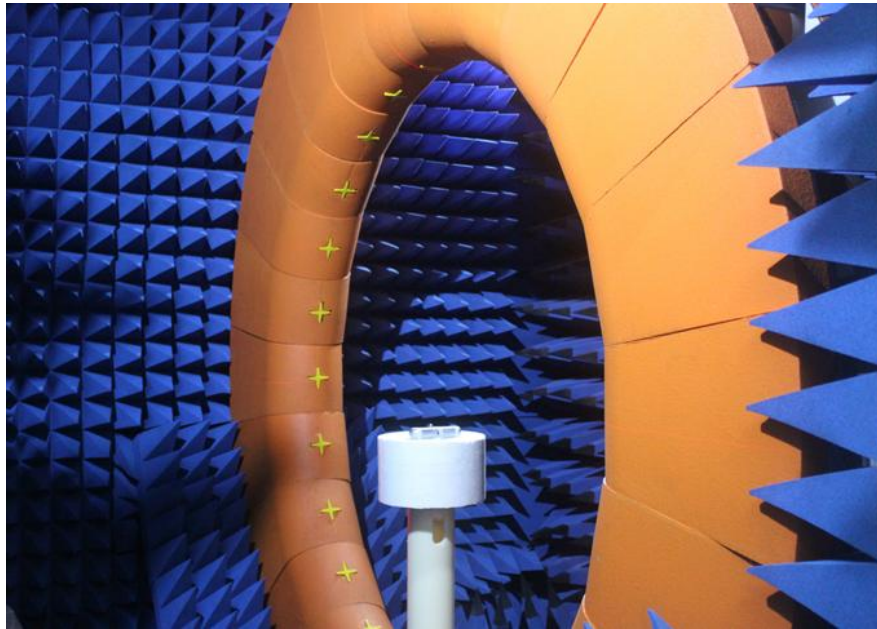


测试设备和测试环境 Test equipment and test environment





测试设备 Test equipment



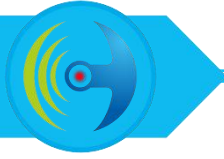
探头微波暗室

➤ 频率：0.4GHz至8.5GHz

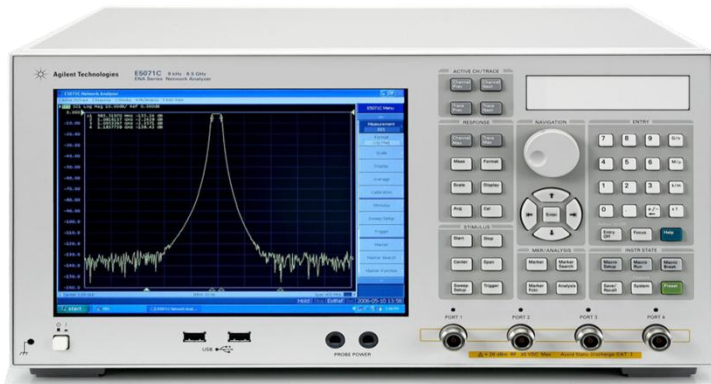
主要测试指标

- ◆ 无源指标
- ◆ 增益
- ◆ 效率
- ◆ 3D方向图

- 有源指标
- TRP总辐射功率
- TIS总接收灵敏度



测试设备 Test equipment



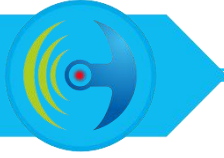
Agilent E5071C 矢量网络分析仪

- 频率：300 kHz至8.5GHz

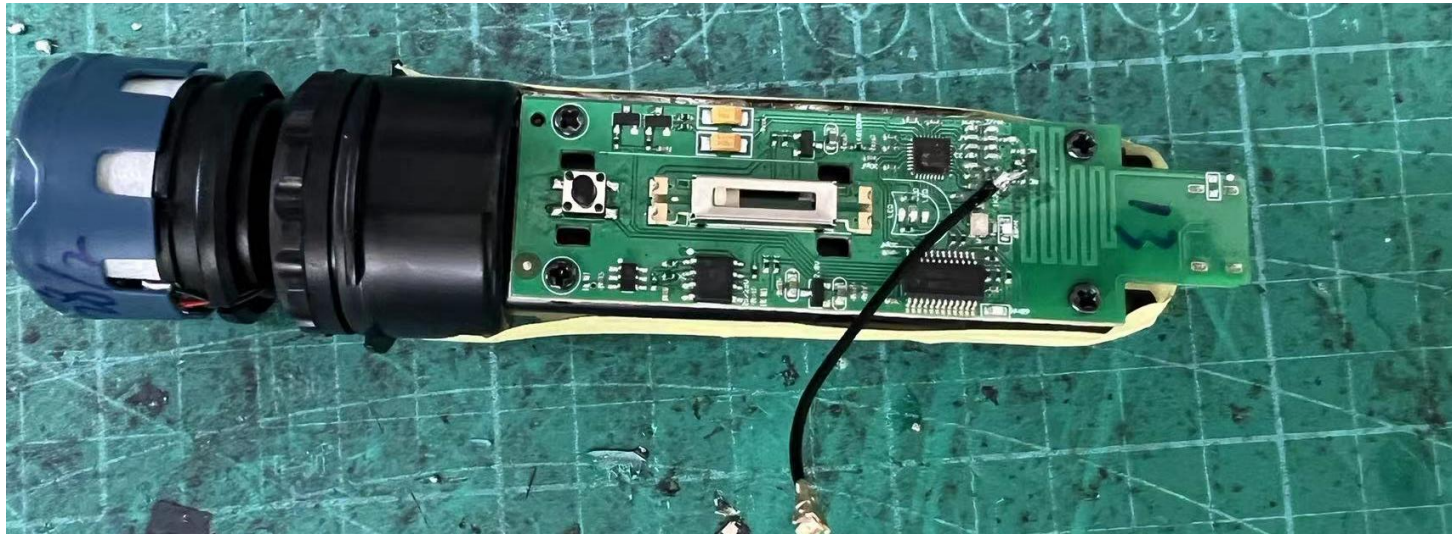


R&S CMW500 宽带无线通信测试仪

- GSM/3G/4G
- WIFI/ Bluetooth
- NB-IoT



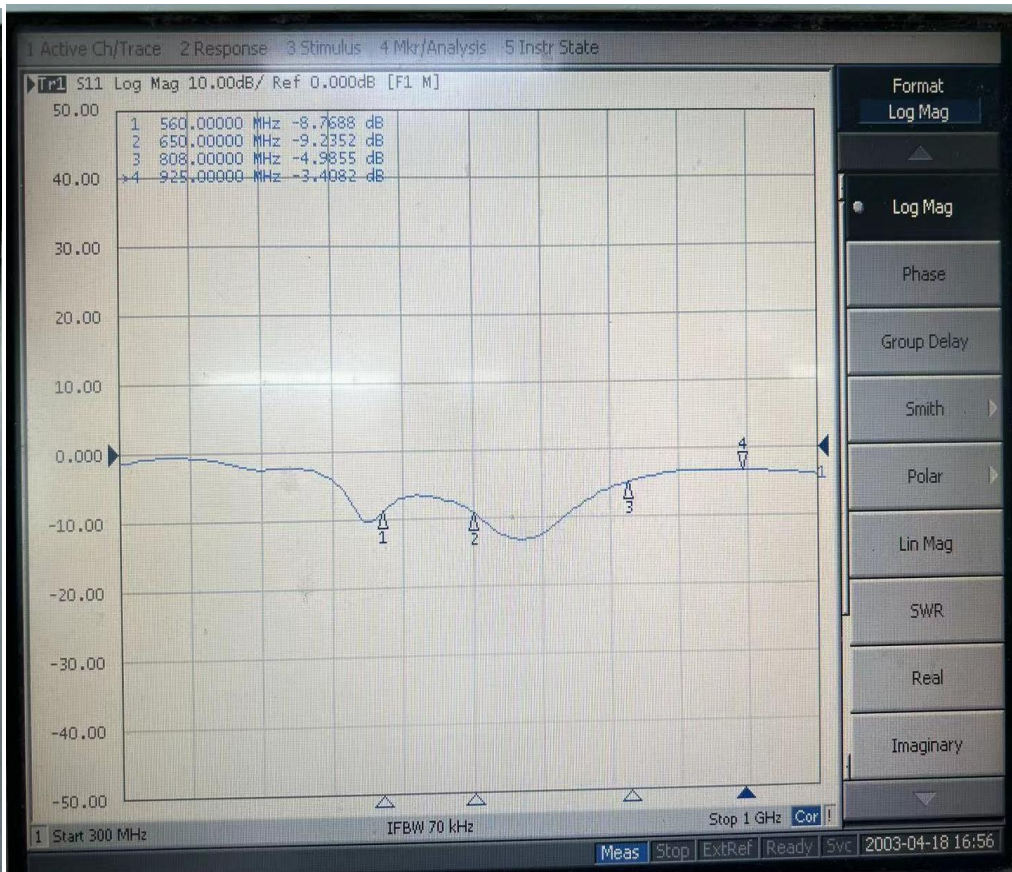
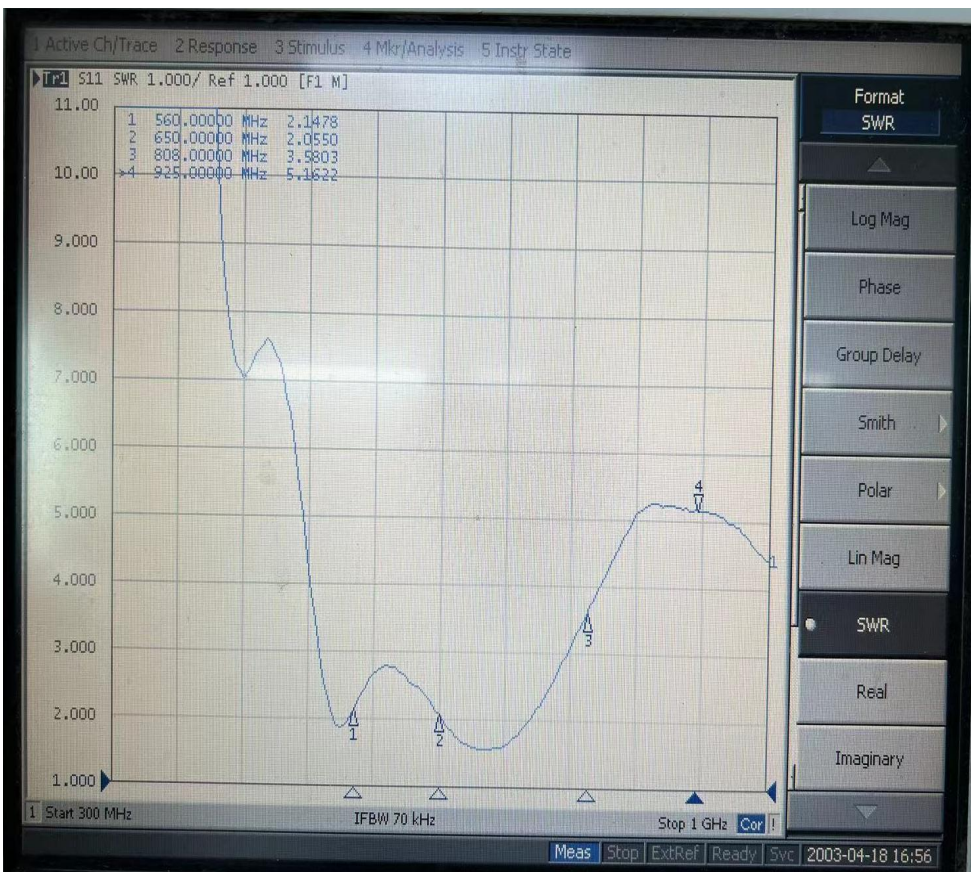
测试拍照
Test photos





天线驻波比 Antenna SWR

天线回波损耗 Antenna Return loss

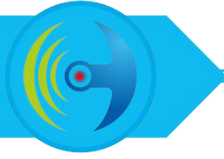




天线增益与效率

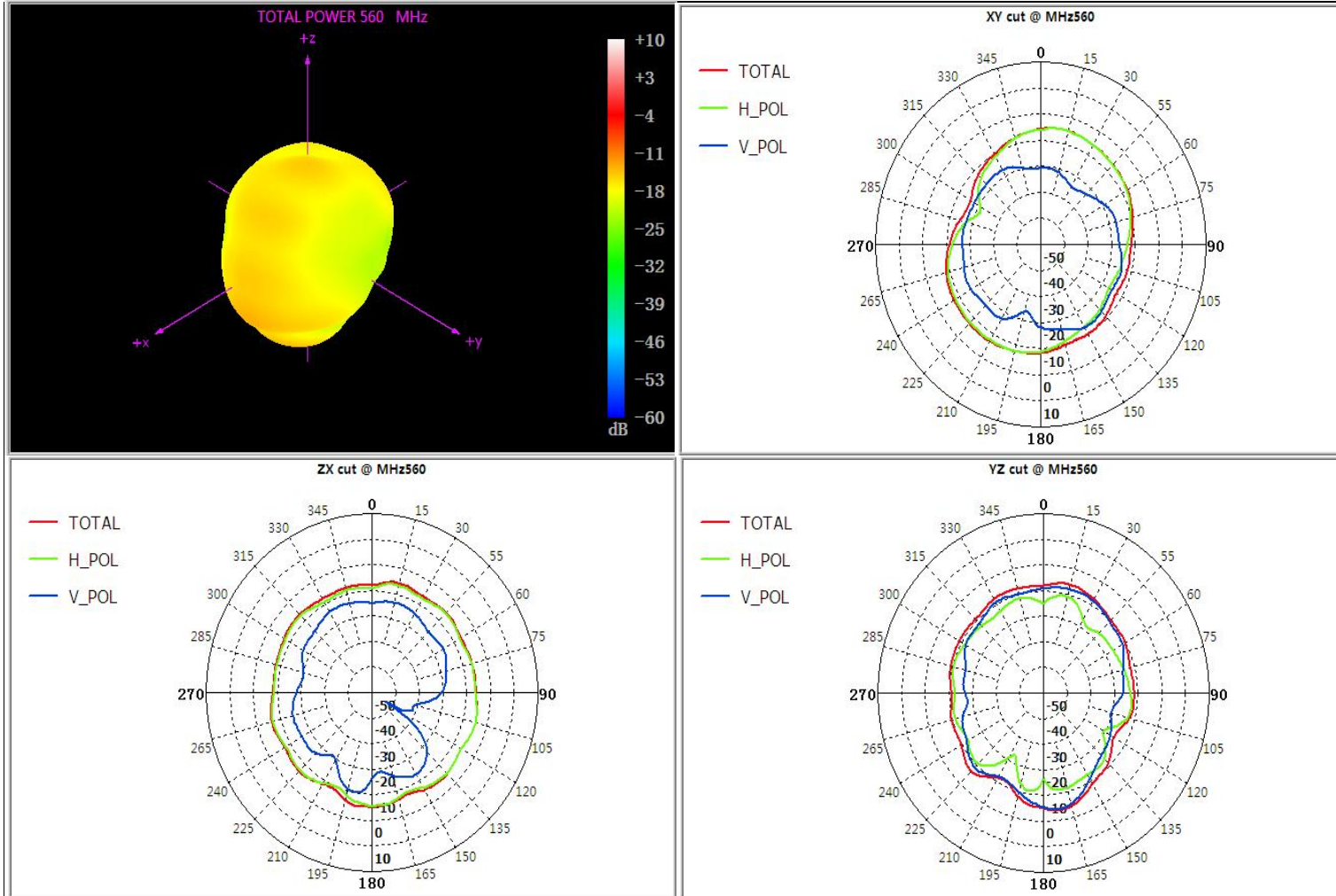
Antenna gain and efficiency

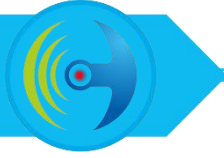
Frequency (MHz)	Efficiency (%)	Gain (dBi)	Frequency (MHz)	Efficiency (%)	Gain (dBi)
550 MHz	1.17	-15.47	832 MHz	4.47	-5.86
560 MHz	1.62	-13.54	834 MHz	4.12	-6.22
570 MHz	2.38	-11.9	836 MHz	3.75	-6.75
580 MHz	3.24	-9.68	838 MHz	3.63	-6.94
590 MHz	3.33	-10.37	840 MHz	3.37	-7.47
600 MHz	4.25	-8.93	842 MHz	3.29	-7.73
610 MHz	4.55	-8.22	844 MHz	3.21	-7.48
620 MHz	5.46	-8.1	846 MHz	2.9	-8.02
630 MHz	5.84	-8.08	848 MHz	2.88	-8.18
640 MHz	7.33	-6.78	850 MHz	2.82	-7.83
650 MHz	8.43	-6.29	852 MHz	2.65	-8.33
800 MHz	9.15	-4.34	854 MHz	2.63	-8.56
802 MHz	8.79	-4.27	856 MHz	2.61	-8.27
804 MHz	8.31	-4.14	858 MHz	2.45	-8.89
806 MHz	8.56	-3.39	860 MHz	2.36	-9.1
808 MHz	8.31	-3.29	862 MHz	2.24	-8.77
810 MHz	7.71	-3.4	864 MHz	2.11	-9.39
812 MHz	7.36	-3.99	866 MHz	2.17	-9.41
814 MHz	7.34	-3.74	868 MHz	2.15	-9
816 MHz	6.94	-3.88	870 MHz	2.05	-9.63
818 MHz	6.66	-4.29	900 MHz	1.36	-11.86
820 MHz	6.56	-4.14	905 MHz	1.36	-11.81
822 MHz	6.21	-4.32	910 MHz	1.38	-11.74
824 MHz	5.93	-4.87	915 MHz	1.3	-11.9
826 MHz	5.29	-5.27	920 MHz	1.27	-12.4
828 MHz	4.88	-5.6	925 MHz	1.26	-12.83
830 MHz	4.64	-5.56	930 MHz	1.31	-12.57



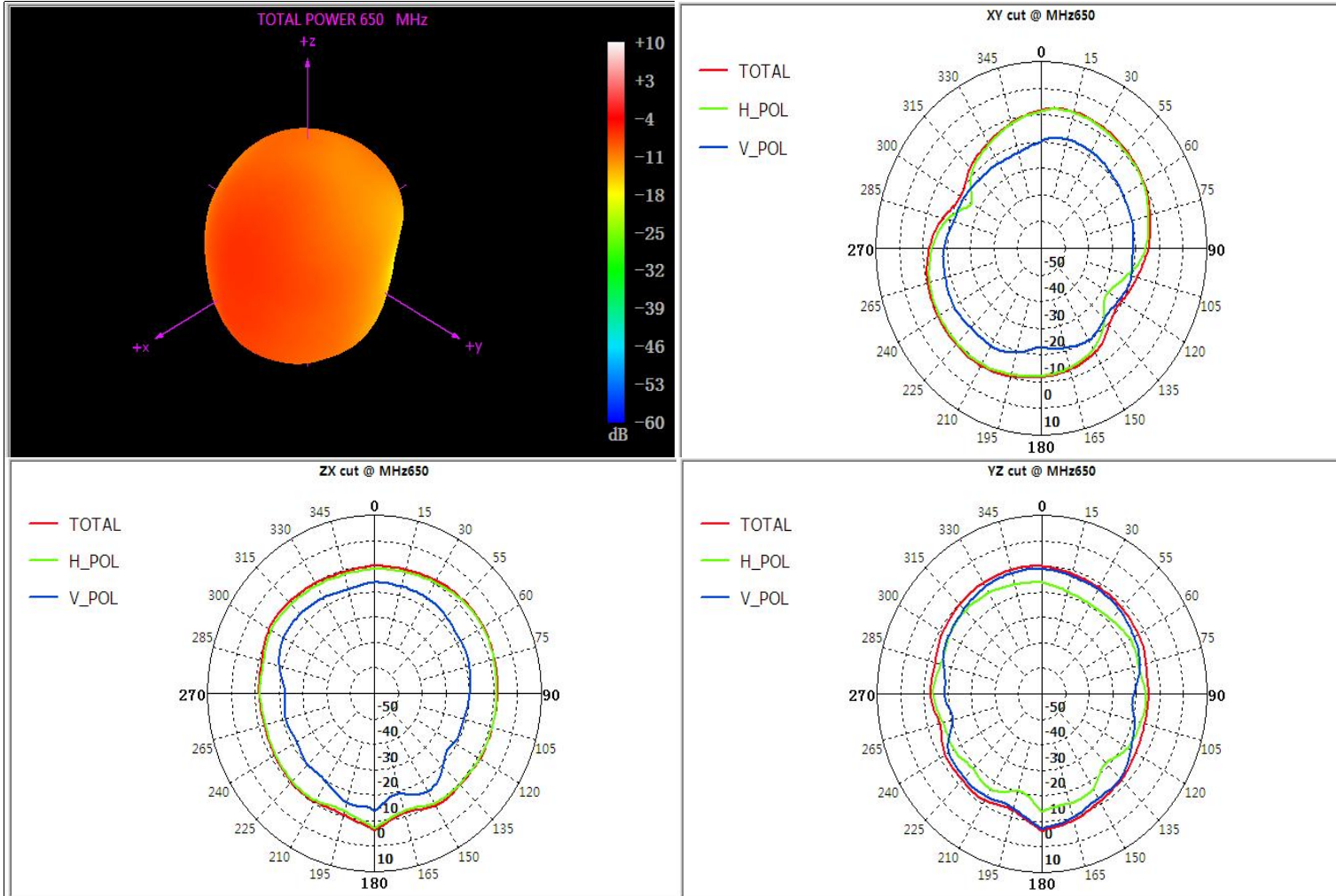
天线增辐射方向图

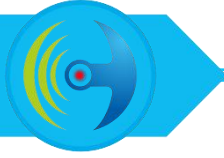
Antenna Radiation Pattern





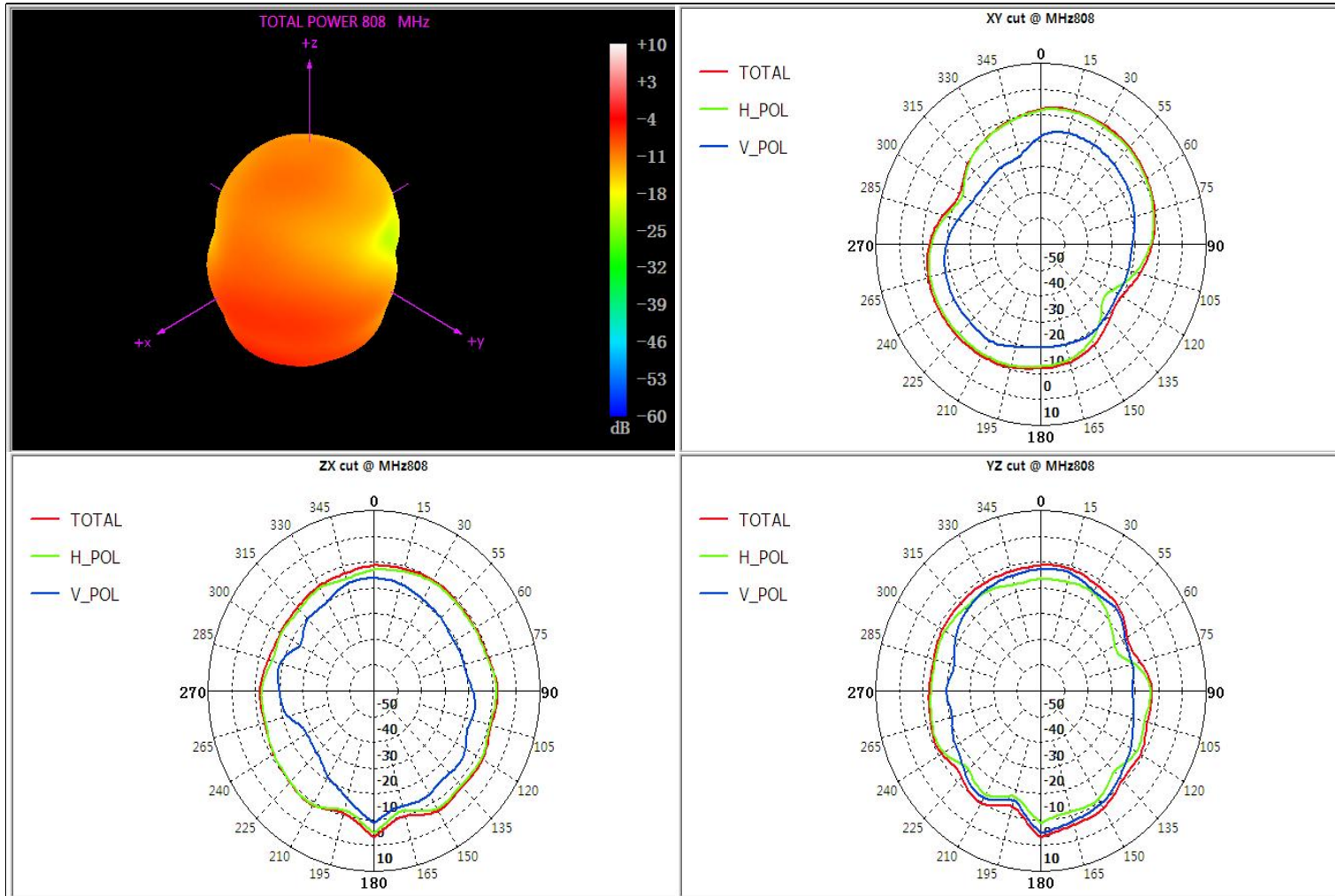
天线增辐射方向图 Antenna Radiation Pattern

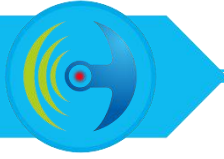




天线增辐射方向图

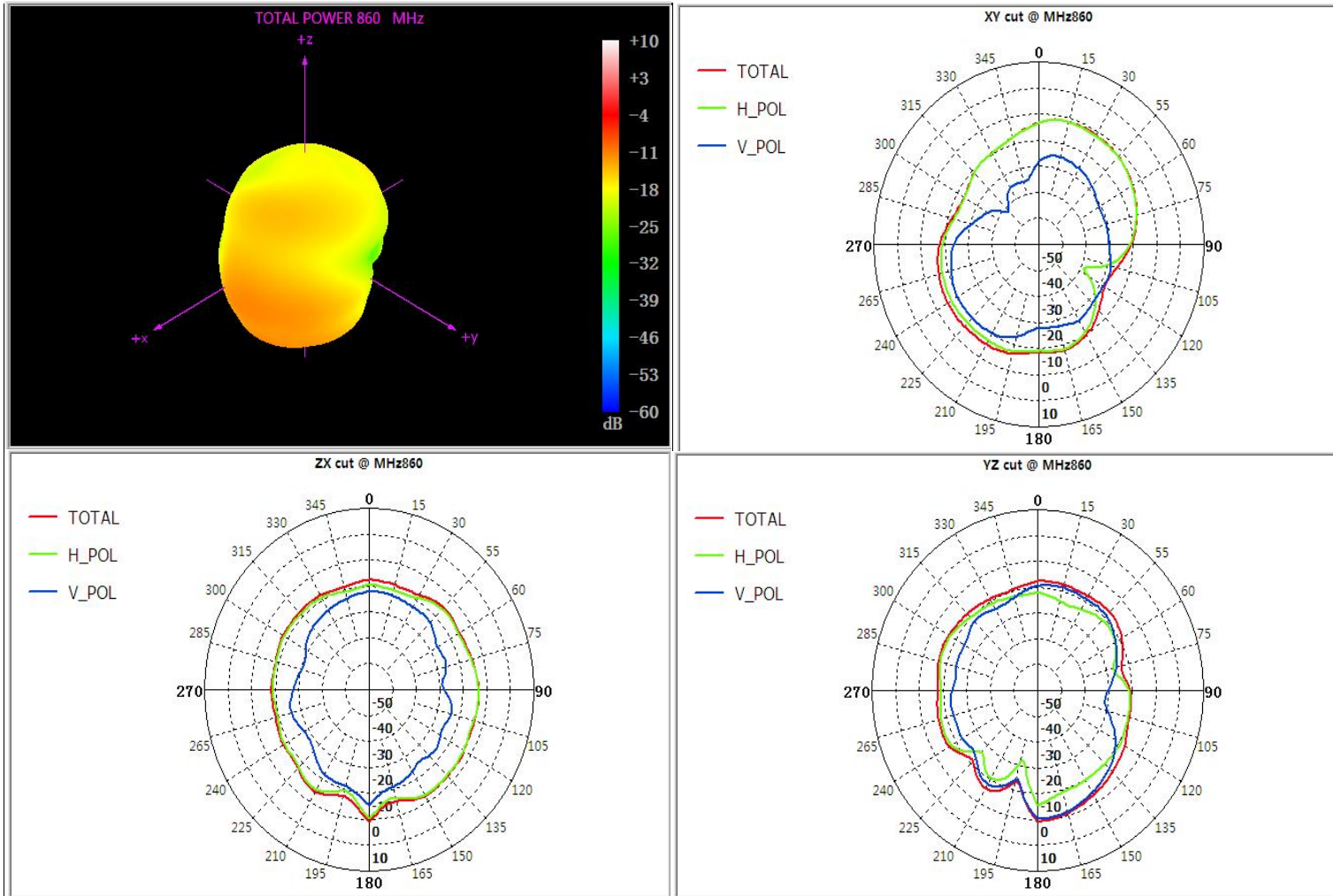
Antenna Radiation Pattern

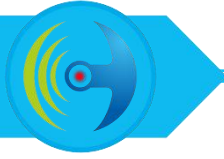




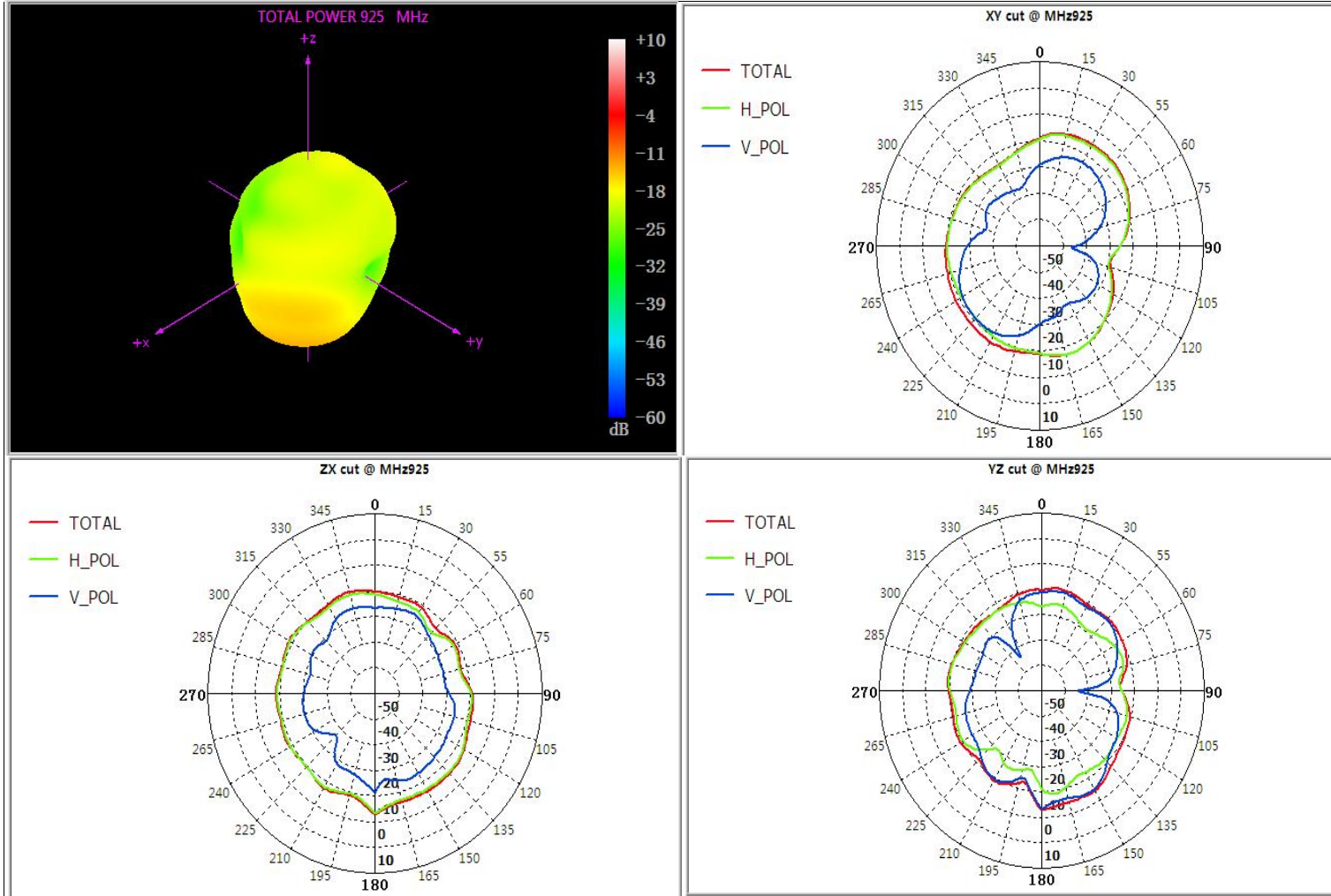
天线增辐射方向图

Antenna Radiation Pattern





天线增辐射方向图 Antenna Radiation Pattern



Thanks for your support!
感谢您的支持!

深圳市宝安区西乡固戍恒南一路C栋303
TEL:(86)755-23035723. FAX:0755-23036702
E-mail:ant001@fmant.cn
ADD: 303, building C,GUSHU Hengnan Road,Xixiang,Baoan district Shenzhen