



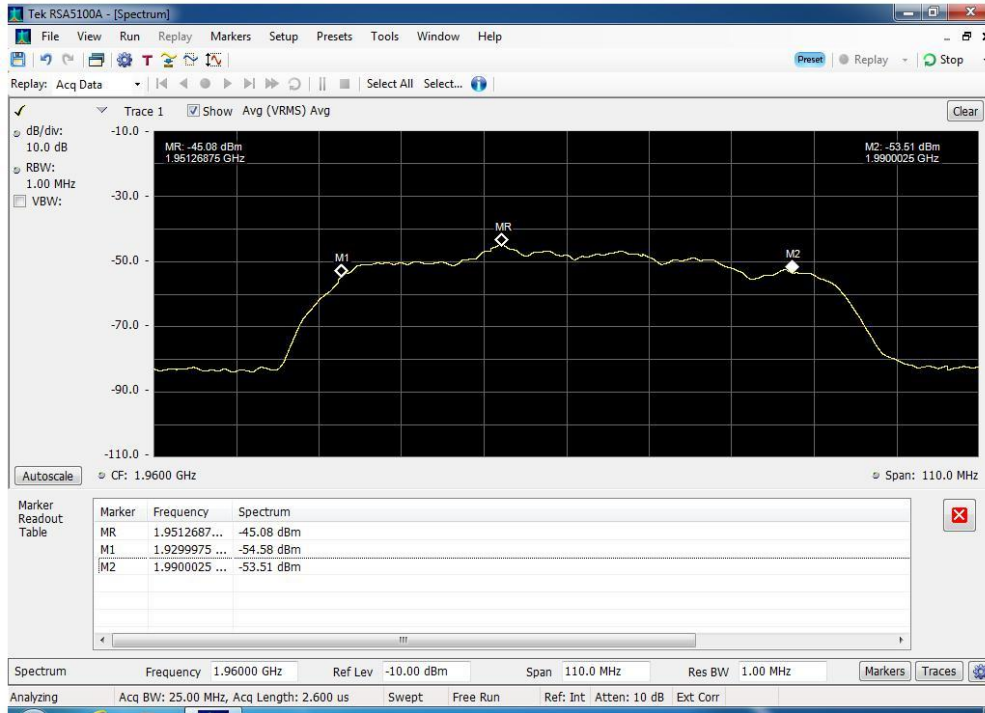
**Annex E**

**Noise Limit**

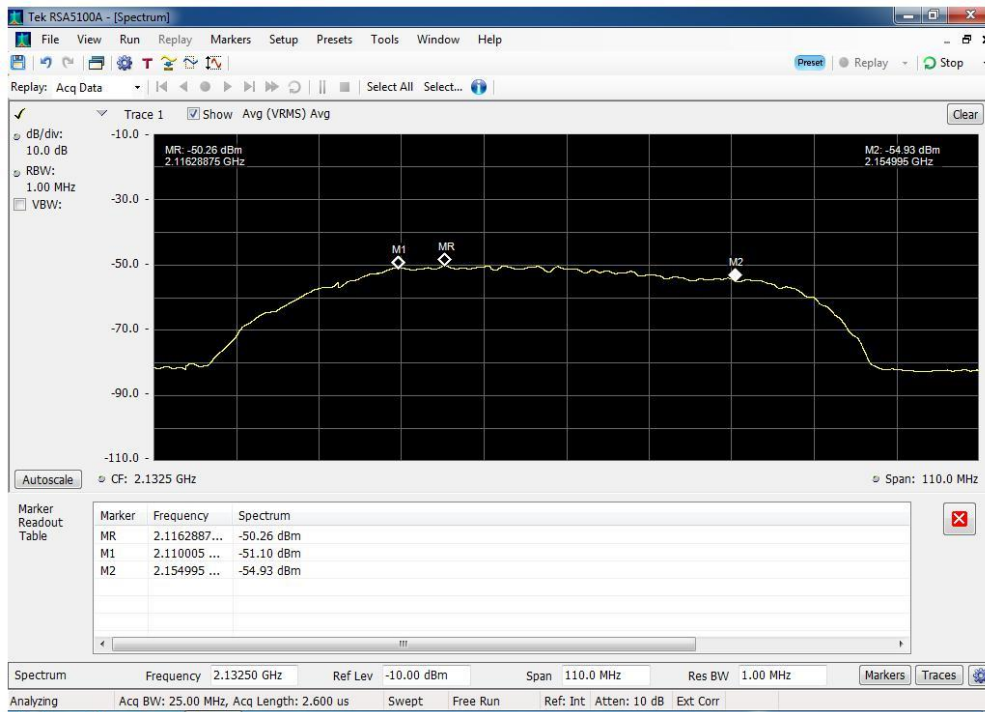
**Uplink Noise Timing**



### Noise Limit\_Downlink\_1930 - 1990 MHz

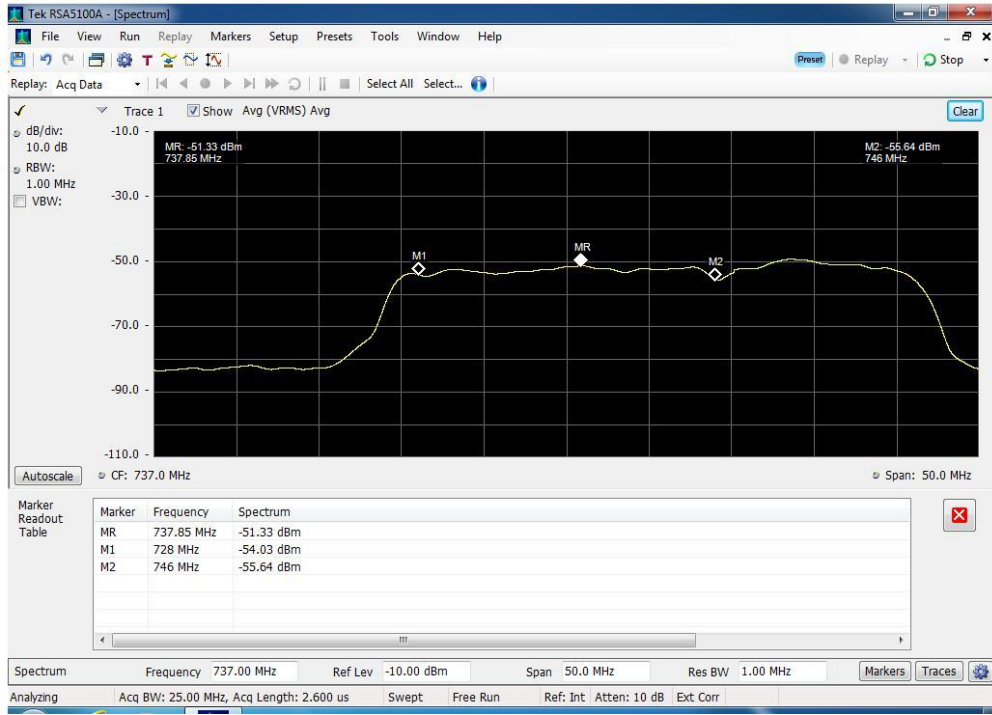


### Noise Limit\_Downlink\_2110 - 2155 MHz

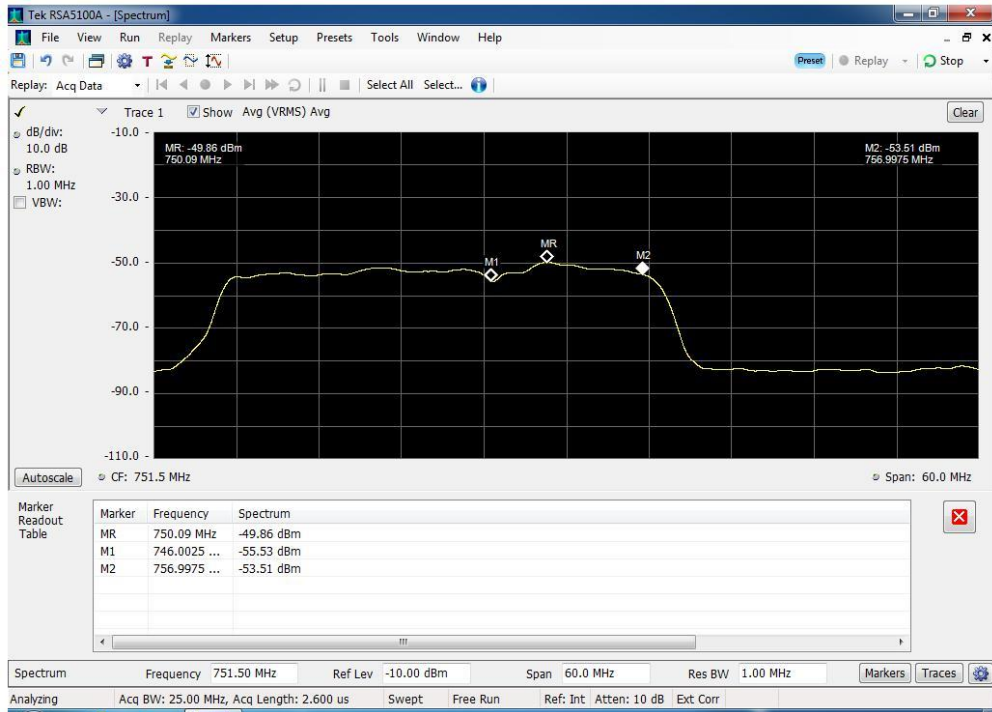




### Noise Limit\_Downlink\_728 -746 MHz

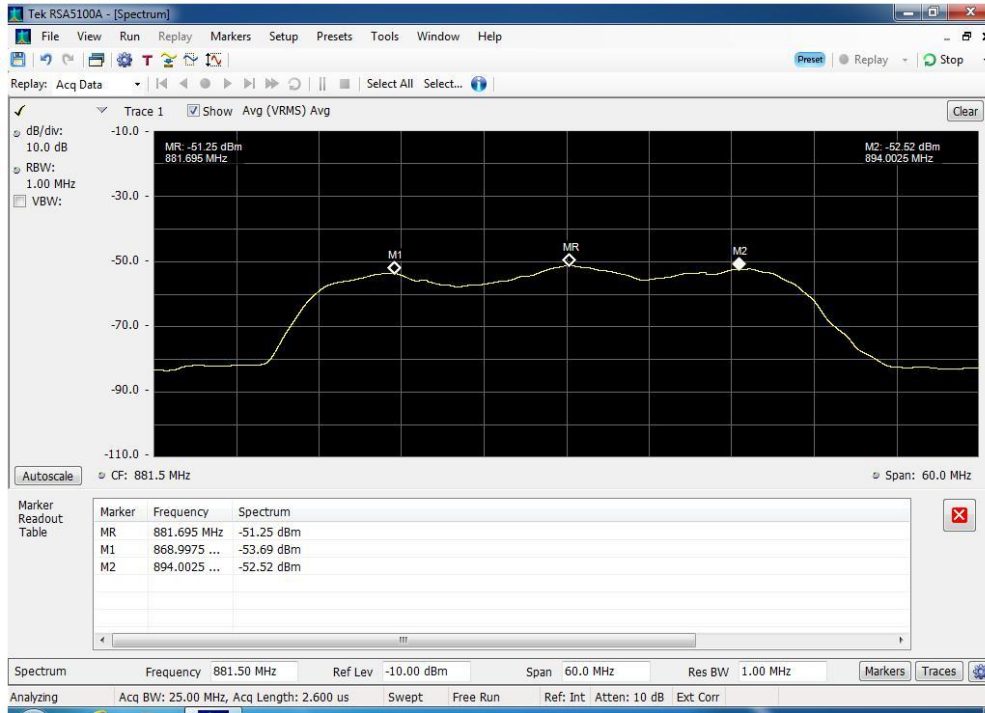


### Noise Limit\_Downlink\_746 - 757 MHz

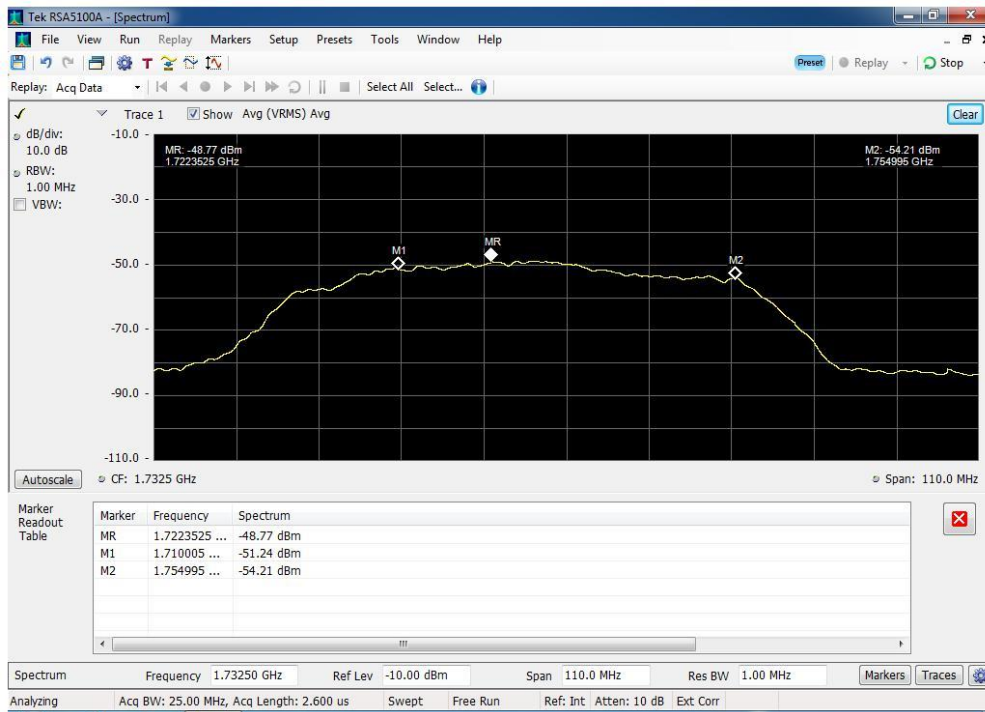




### Noise Limit\_Downlink\_869 - 894 MHz

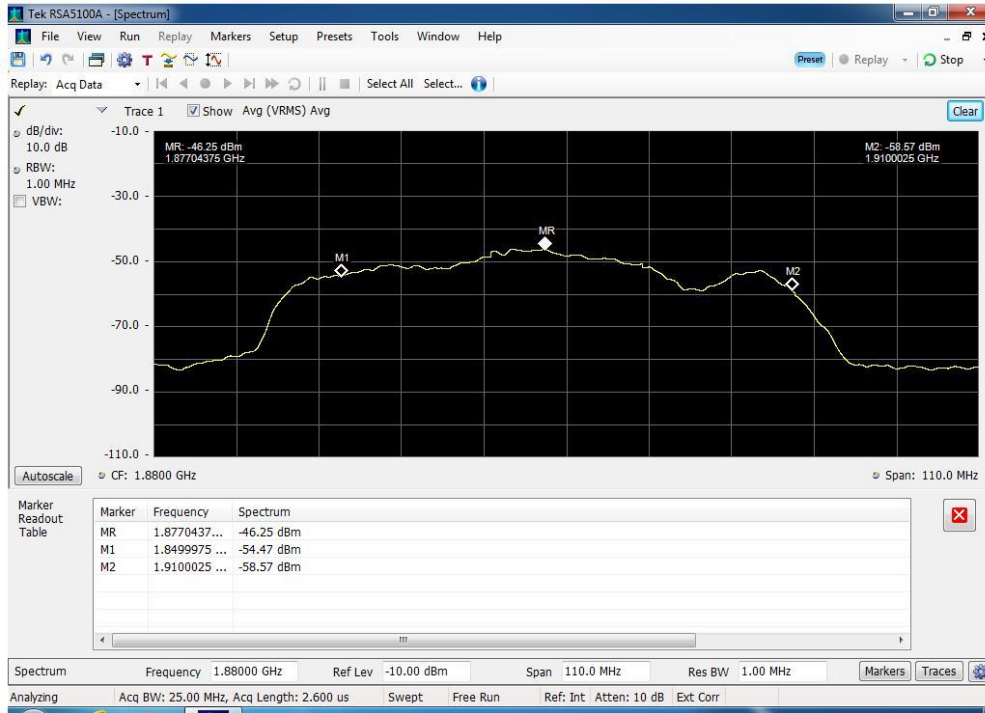


### Noise Limit\_Uplink\_1710 - 1755 MHz

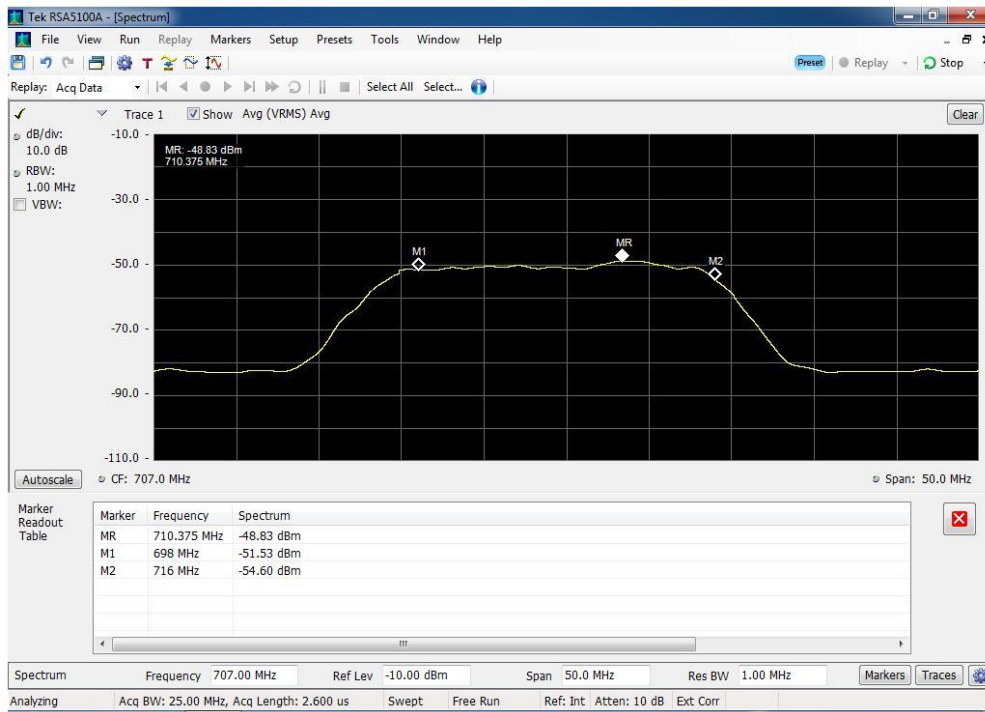




### Noise Limit\_Uplink\_1850 - 1910 MHz

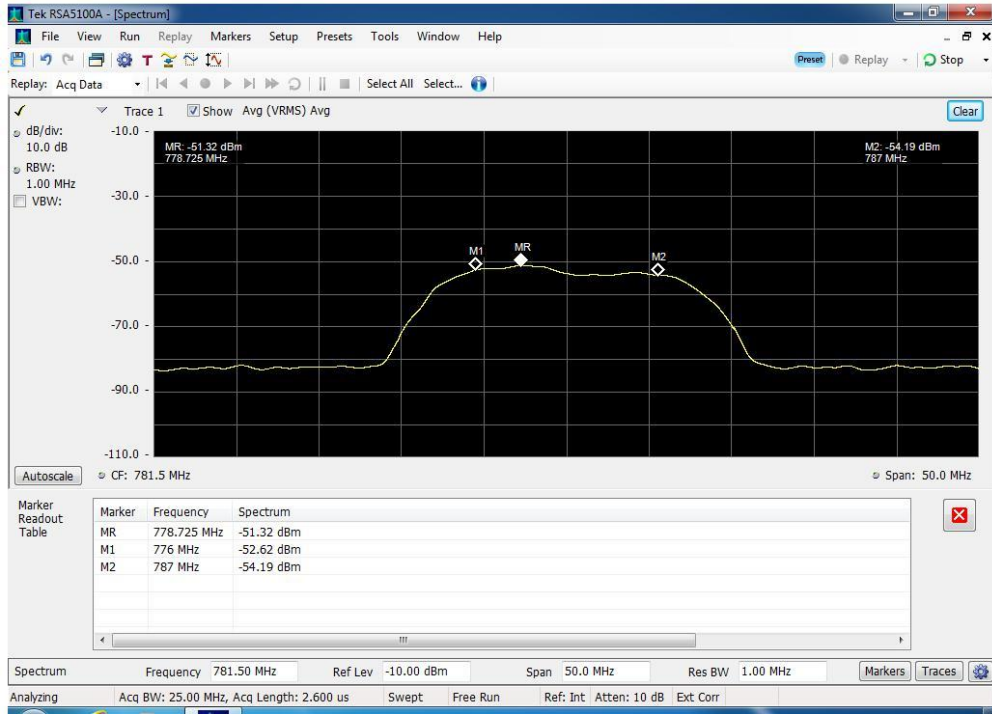


### Noise Limit\_Uplink\_698 - 716 MHz

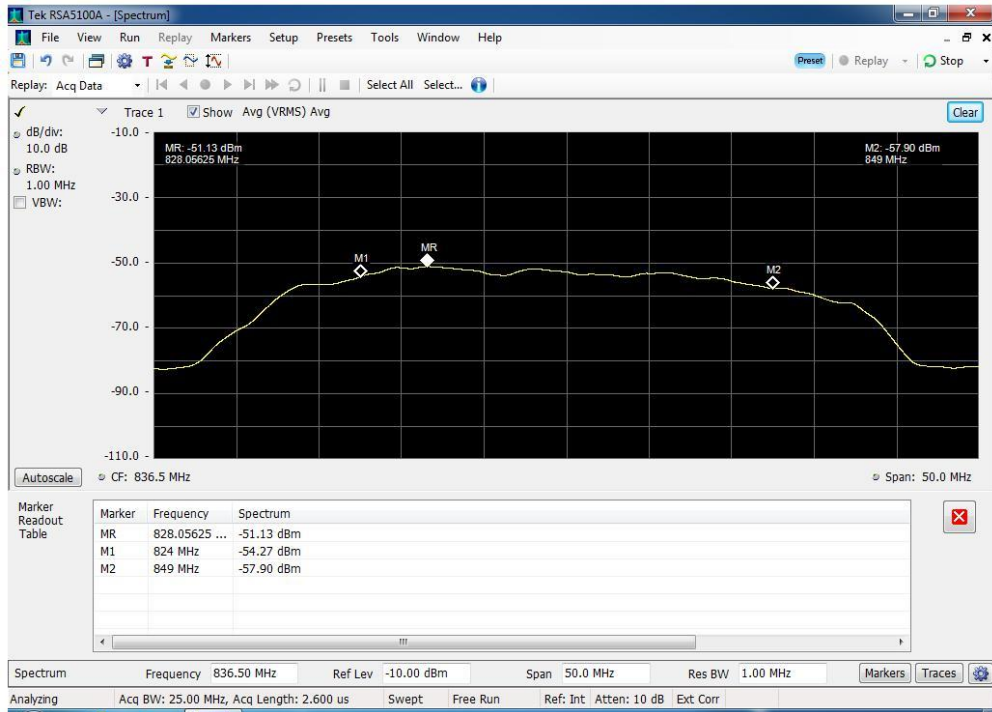




### Noise Limit\_Uplink\_776 - 787 MHz



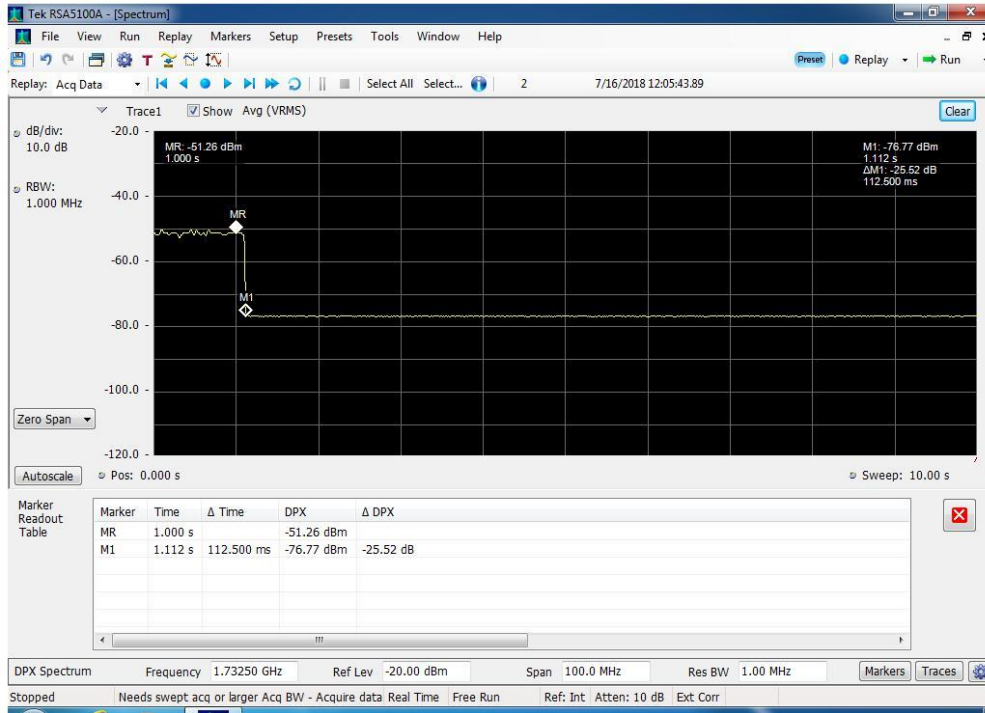
### Noise Limit\_Uplink\_824 - 849 MHz



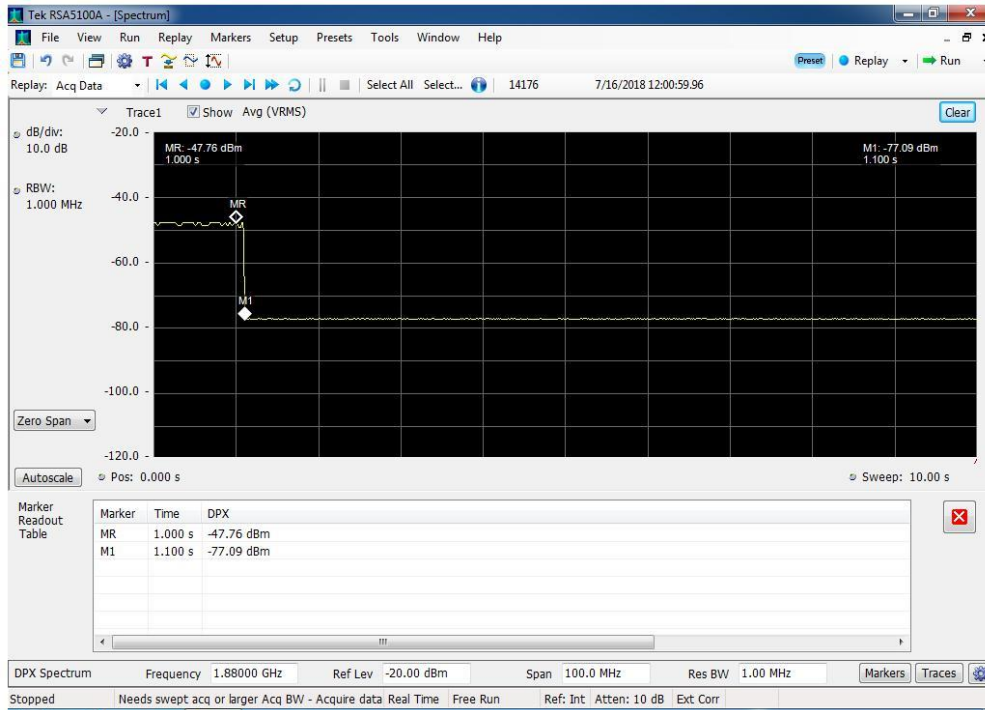




### Uplink Variable Noise Timing\_1710 - 1755 MHz

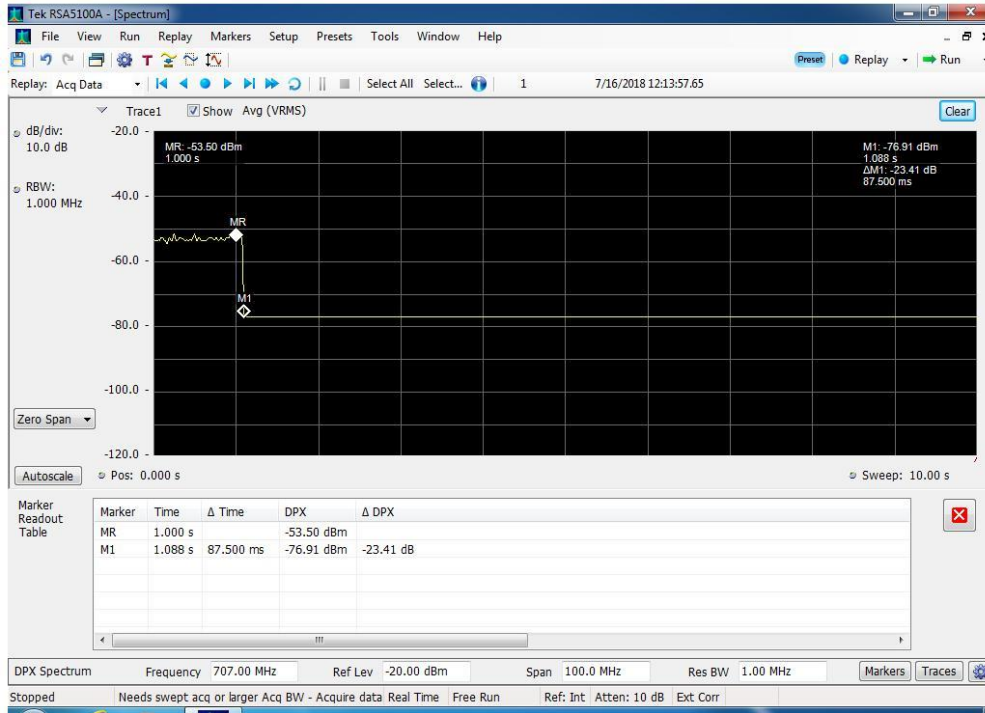


### Uplink Variable Noise Timing\_1850 - 1910 MHz

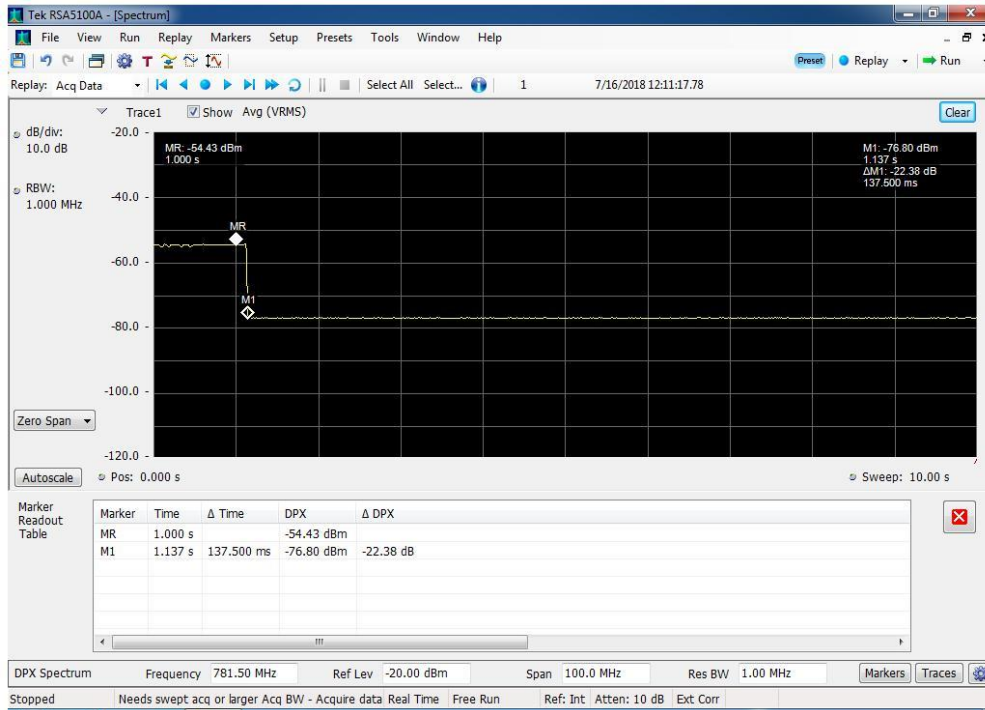




### Uplink Variable Noise Timing\_698 - 716 MHz



### Uplink Variable Noise Timing\_776 - 787 MHz







### Uplink Variable Noise Timing\_824 - 849 MHz

