

DW866

6S
220
16V

476
100Z
516

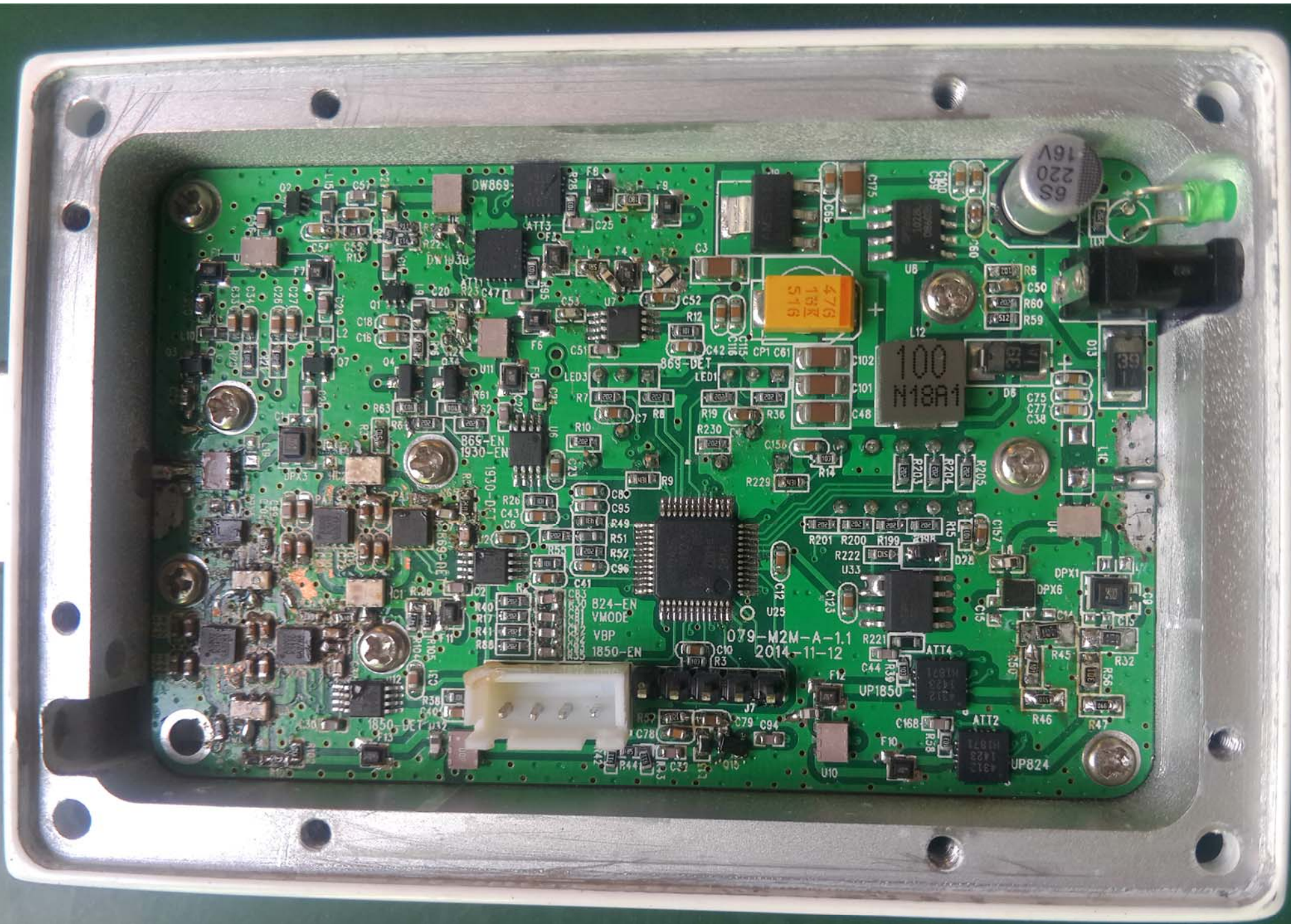
100
M18A1

865-EN
1930-EN

079-M2M-A-1.1
2014-11-12

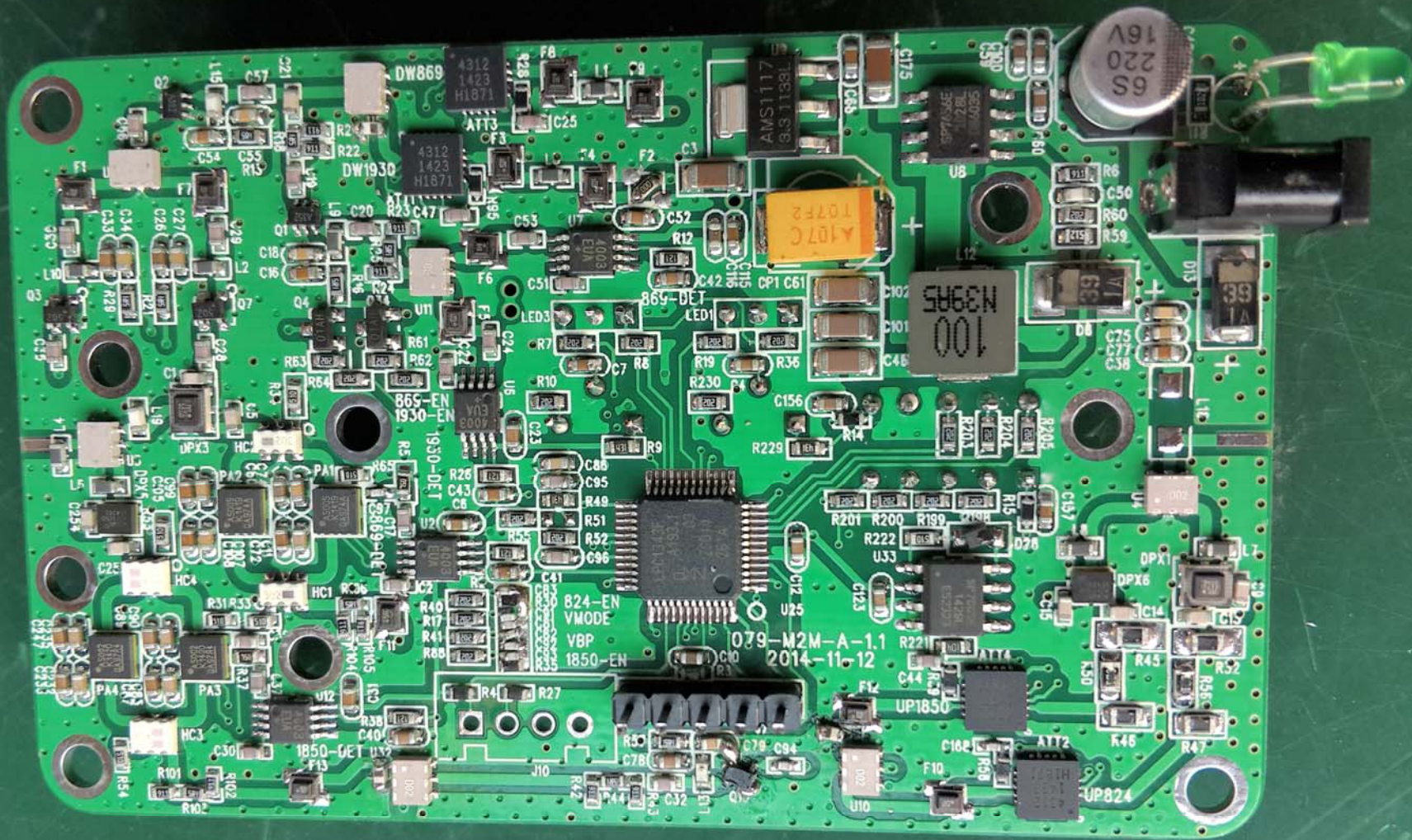
824-EN
VMODE
VBP
1850-EN

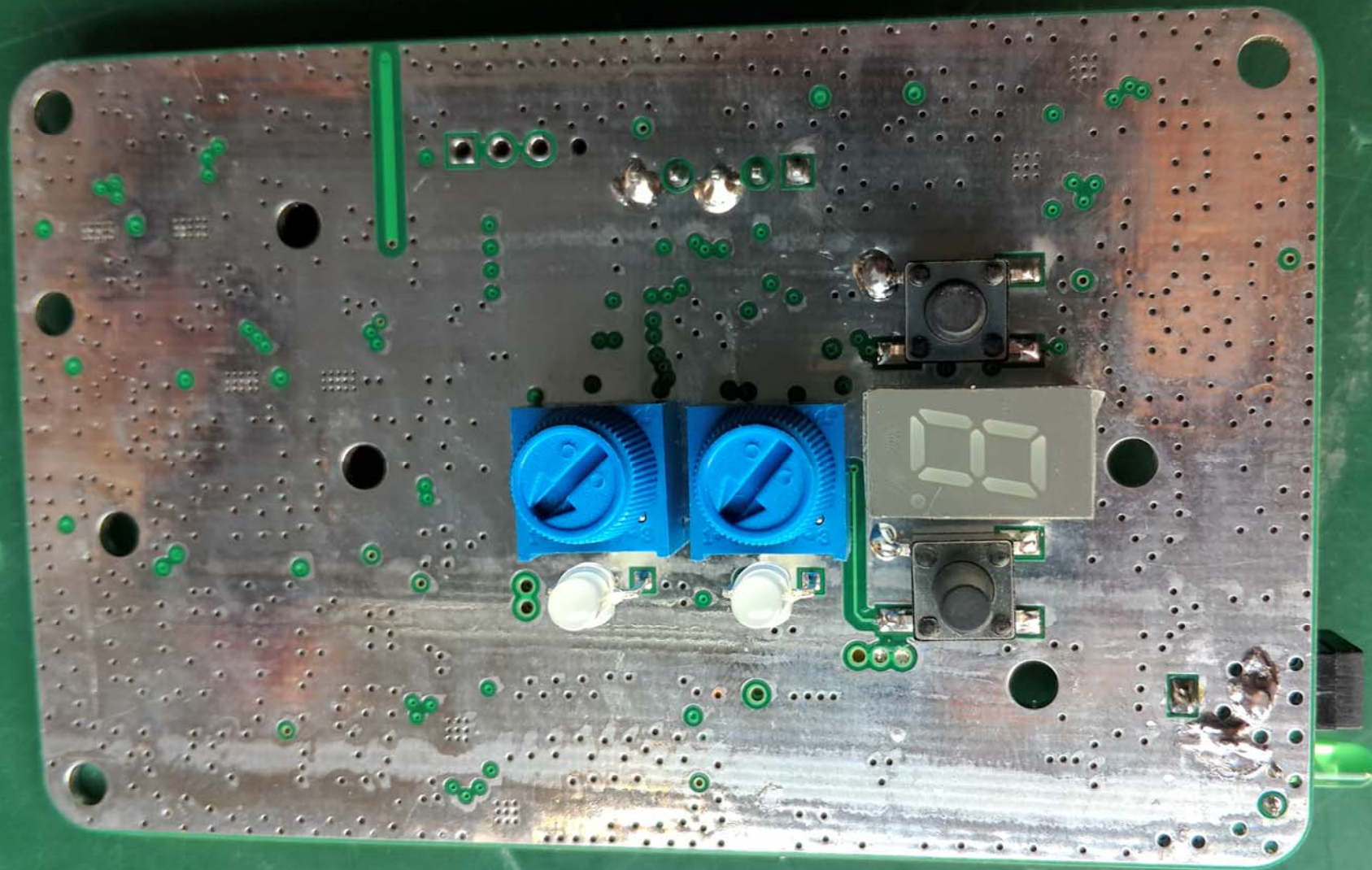
UP824

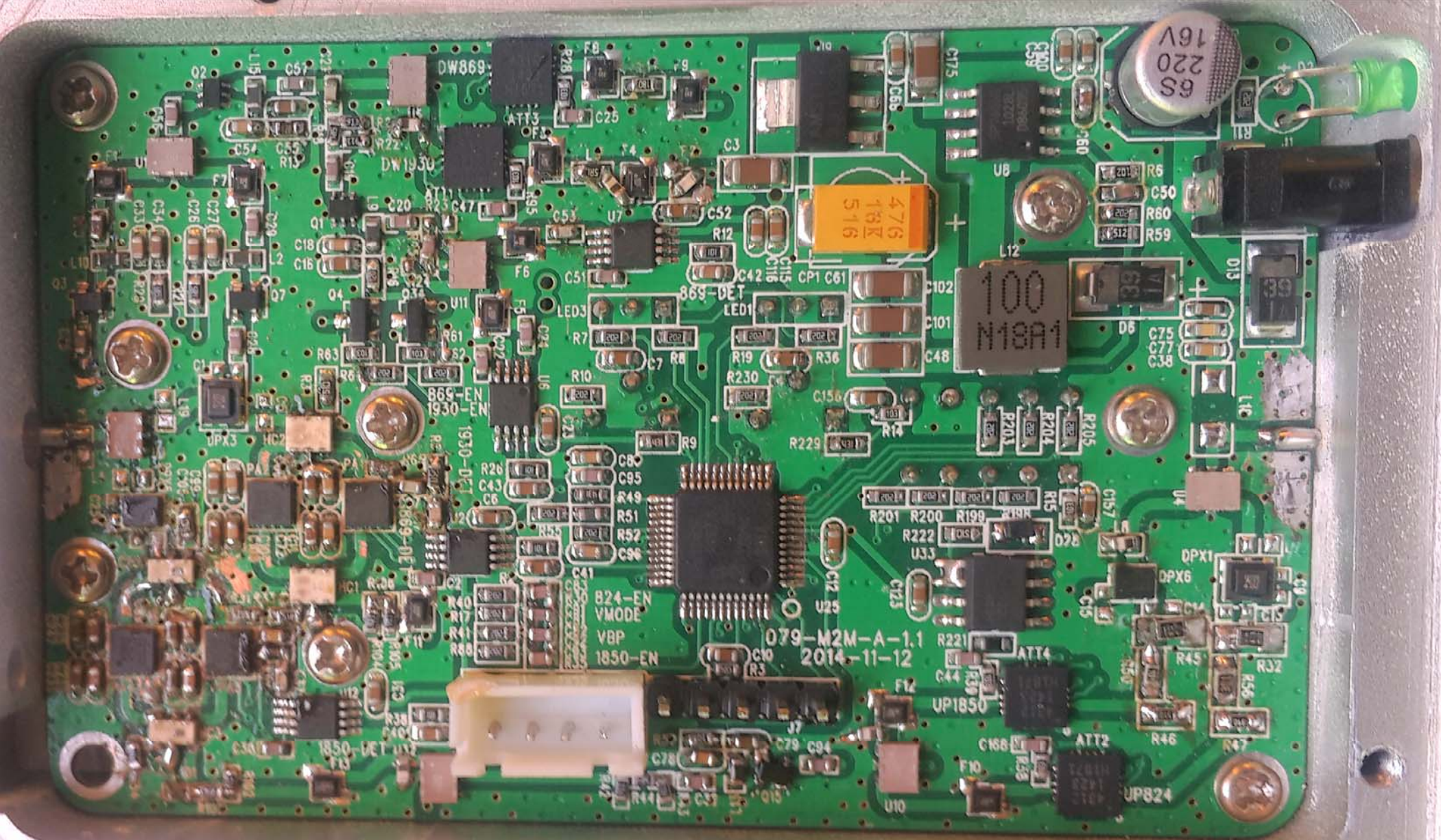


Component labels on the PCB include:

- U8: 100 M18A1
- U7: 473 15V 516
- U6: 6S 220 16V
- U5: 869-DET
- U4: 865-EN 1930-EN
- U3: 824-EN VMODE
- U2: 1850-EN
- U1: 079-M2M-A-1.1 2014-11-12
- U10: UP824
- U9: UP1850
- U11: 1930-DT
- U12: 869-NE
- U13: 1850-DET
- U14: 1930-DT
- U15: 1850-DET
- U16: 1930-DT
- U17: 1850-DET
- U18: 1930-DT
- U19: 1850-DET
- U20: 1930-DT
- U21: 1850-DET
- U22: 1930-DT
- U23: 1850-DET
- U24: 1930-DT
- U25: 1850-DET
- U26: 1930-DT
- U27: 1850-DET
- U28: 1930-DT
- U29: 1850-DET
- U30: 1930-DT
- U31: 1850-DET
- U32: 1930-DT
- U33: 1850-DET
- U34: 1930-DT
- U35: 1850-DET
- U36: 1930-DT
- U37: 1850-DET
- U38: 1930-DT
- U39: 1850-DET
- U40: 1930-DT
- U41: 1850-DET
- U42: 1930-DT
- U43: 1850-DET
- U44: 1930-DT
- U45: 1850-DET
- U46: 1930-DT
- U47: 1850-DET
- U48: 1930-DT
- U49: 1850-DET
- U50: 1930-DT







DW869

DW1930

869-EN
1930-EN

1930-DET

869-DET

824-EN
VMODE
VBP
1850-EN

079-M2M-A-1.1
2014-11-12

100
M18A1

476
18K
516

6S
220
16V

33

39

30

32

32

32

