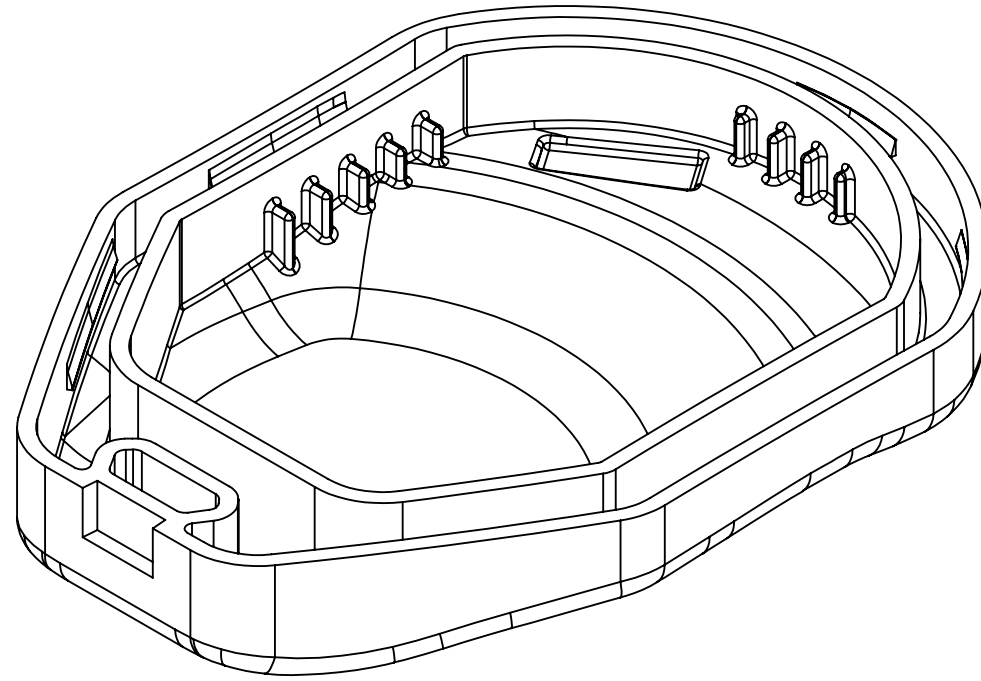


SAMPLE REQUEST

REVISIONS			
REV.	DESCRIPTION	CO #	DATE



D

D

C

C

B

B

A

A

COVER SHEET SCALE: 2:1 SHEET 1 OF 5

PROPRIETARY AND CONFIDENTIAL
 THE INFORMATION CONTAINED IN THIS
 DRAWING IS THE SOLE PROPERTY OF JL
 MARINE SYSTEMS INC. ANY REPRODUCTION IN
 PART OR AS A WHOLE WITHOUT WRITTEN
 PERMISSION OF JL MARINE SYSTEMS INC. IS
 PROHIBITED.

Engineering Item Code MP-0749	Engineering Revision 14-16
Live Item Code	Live Revision
Material ABS Black	

Engineering Description
 SHELL, CM2 SHALLOW WATER ANCHOR REMOTE, BOTTOM

Weight 0.021 lbs
Surface Area 17.509 in ²
Volume 0.569 in ³

UNLESS OTHERWISE SPECIFIED
 DIMENSIONS ARE IN INCHES
 UNMARKED RADII OR CHAMFERS
 .02 ± .005
 UNMARKED TOLERANCES ARE
 .X ± .1
 .XX ± .01
 .XXX ± .005
 ANGLES ± 1°

8

7

6

5

4

3

2

1

PART SPECIFICATIONS

1. 3D SOLID MODEL EXPLICITLY DEFINES ALL PART GEOMETRY INCLUDING BUT NOT LIMITED TO DRAFTS, CHAMFERS, ROUNDS AND FILLETS UNLESS OTHERWISE SPECIFIED IN THIS DRAWING.
2. AN OFFSET SHELL TOLERANCE OF $\pm .010$ INCHES APPLIES TO ALL PART GEOMETRY IN SOLID MODEL UNLESS OTHERWISE SPECIFIED IN THIS DRAWING.
3. TOLERANCE CHART IN TITLE BLOCK APPLIES UNLESS OTHERWISE SPECIFIED.
4. PART IS SYMMETRIC ABOUT THE CENTERLINE.

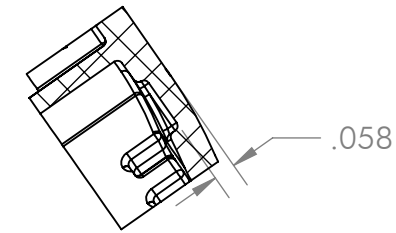
MOLD SPECIFICATIONS

1. MOLD IS SINGLE CAVITY NON-FAMILY.
2. MACHINE FINISH ON SURFACES UNLESS OTHERWISE SPECIFIED
3. SPI D3 SURFACE FINISH ON ALL "NON-INDENTED" SURFACES ON EXTERIOR OF PART INCLUDING BUT NOT LIMITED TO NOTED AREAS
4. SPI A2 SURFACE FINISH ON "INDENTED PORTION OF P-LOGO"
5. SPI A2 SURFACE FINISH ON "SHALLOW REGULATORY MARKING AREA PERIMETER"
6. "SHALLOW REGULATORY MARKING AREA" SHOULD BE AN INSERT AND THE FOLLING INFORMATION MUST BE ADDED BY POLISHING THE LETTERS TO A SPI A2 SURFACE FINISH:
 1. FCC ID: A7FEA193
 2. IC: 11454A-EA193
 3. EA193

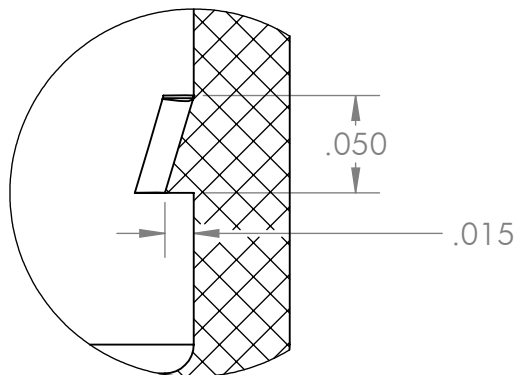
PROCESSING SPECIFICATIONS

1. MATERIAL SHOULD BE PREPPED AND PROCESSED ACCORDING TO MATERIAL MANUFACTURER SPECIFICATIONS UNLESS OTHERWISE NOTED.

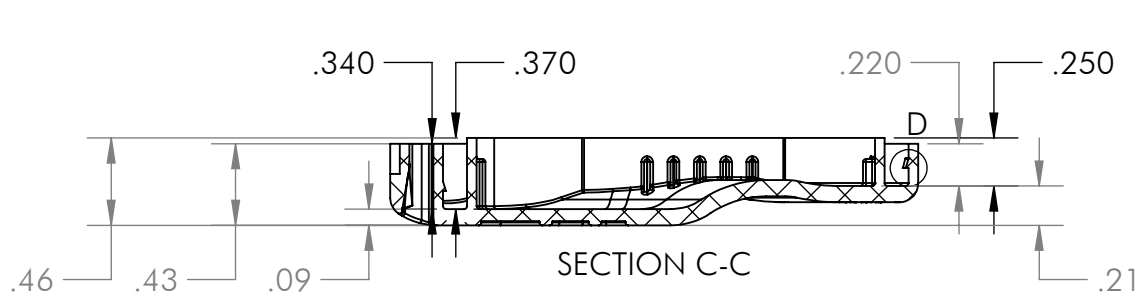
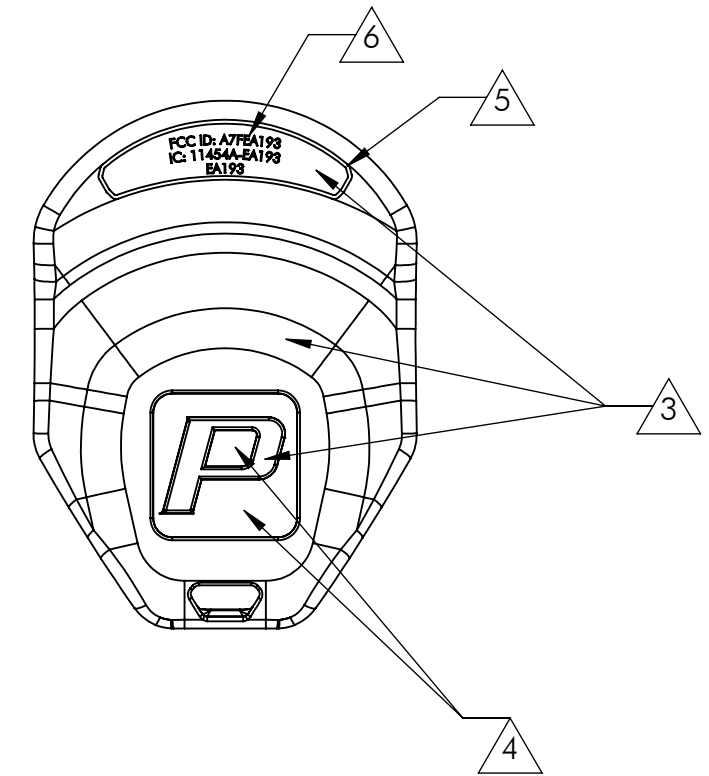
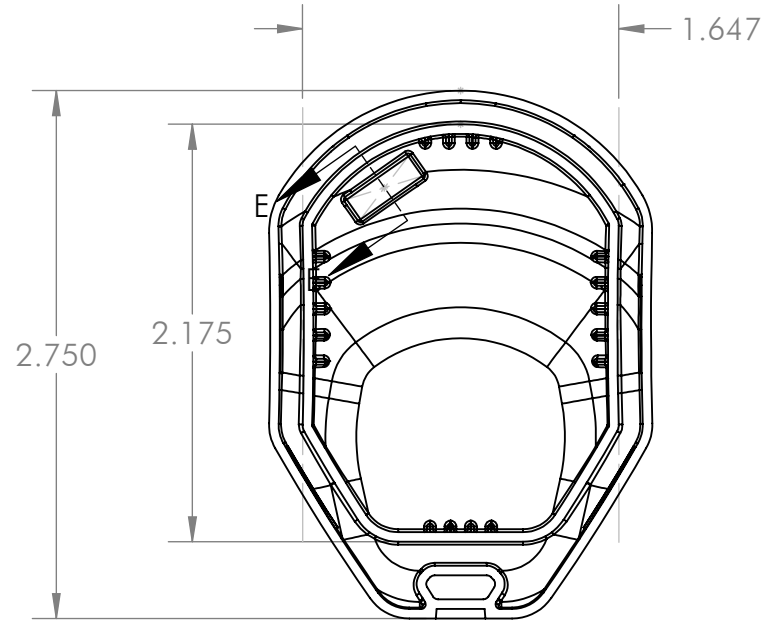
COLOR: BLACK



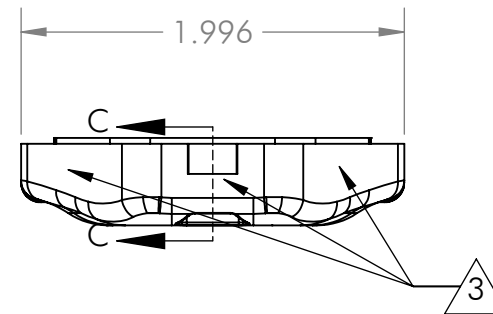
SECTION E-E
SCALE 2 : 1



DETAIL D
SCALE 10 : 1



SECTION C-C



MECHANICAL DRAWING 1 SCALE: 1:1 SHEET 2 OF 5

PROPRIETARY AND CONFIDENTIAL
THE INFORMATION CONTAINED IN THIS
DRAWING IS THE SOLE PROPERTY OF JL
MARINE SYSTEMS INC. ANY REPRODUCTION IN
PART OR AS A WHOLE WITHOUT WRITTEN
PERMISSION OF JL MARINE SYSTEMS INC. IS
PROHIBITED.

Engineering Item Code
MP-0749

Live Item Code

Material
ABS Black

Engineering Revision
14-16

Live Revision

Engineering Description
SHELL, CM2 SHALLOW WATER ANCHOR REMOTE, BOTTOM

Weight
0.021 lbs

Surface Area
17.509 in²

Volume
0.569 in³

UNLESS OTHERWISE SPECIFIED
DIMENSIONS ARE IN INCHES
UNMARKED RADII OR CHAMFERS
 $.02 \pm .005$
UNMARKED TOLERANCES ARE
.X $\pm .1$
.XX $\pm .01$
.XXX $\pm .005$
ANGLES $\pm 1^\circ$

8 7 6 5 4 3 2 1

MOLD SPECIFICATIONS

1. MOLD IS SINGLE CAVITY NON-FAMILY.
2. MACHINE FINISH ON SURFACES UNLESS OTHERWISE SPECIFIED
3. SPI D3 SURFACE FINISH ON ALL "NON-INDENTED" SURFACES ON EXTERIOR OF PART INCLUDING BUT NOT LIMITED TO NOTED AREAS
4. SPI A2 SURFACE FINISH ON "INDENTED PORTION OF P-LOGO"
5. SPI A2 SURFACE FINISH ON "SHALLOW REGULATORY MARKING AREA PERIMETER"
6. "SHALLOW REGULATORY MARKING AREA" SHOULD BE AN INSERT AND THE FOLLING INFORMATION MUST BE ADDED BY POLISHING THE LETTERS TO A SPI A2 SURFACE FINISH:
 1. FCC ID: A7FEA193
 2. IC: 11454A-EA193
 3. EA193

D

D

C

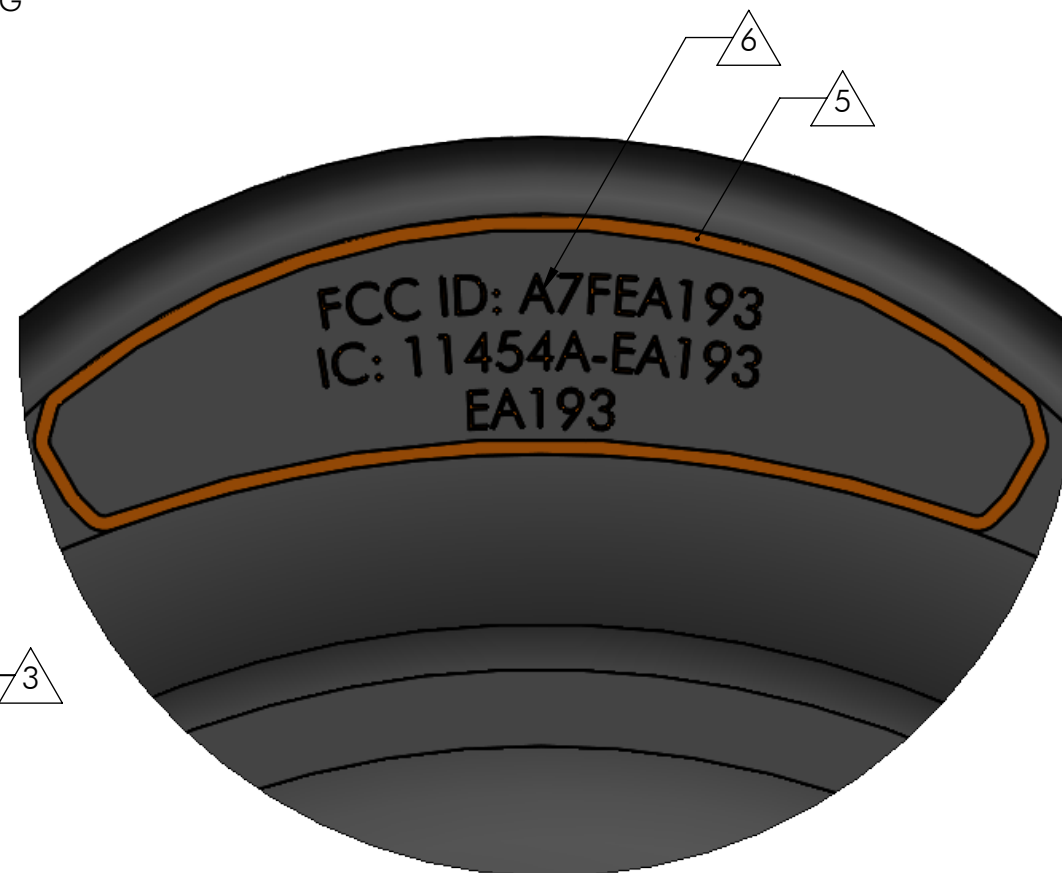
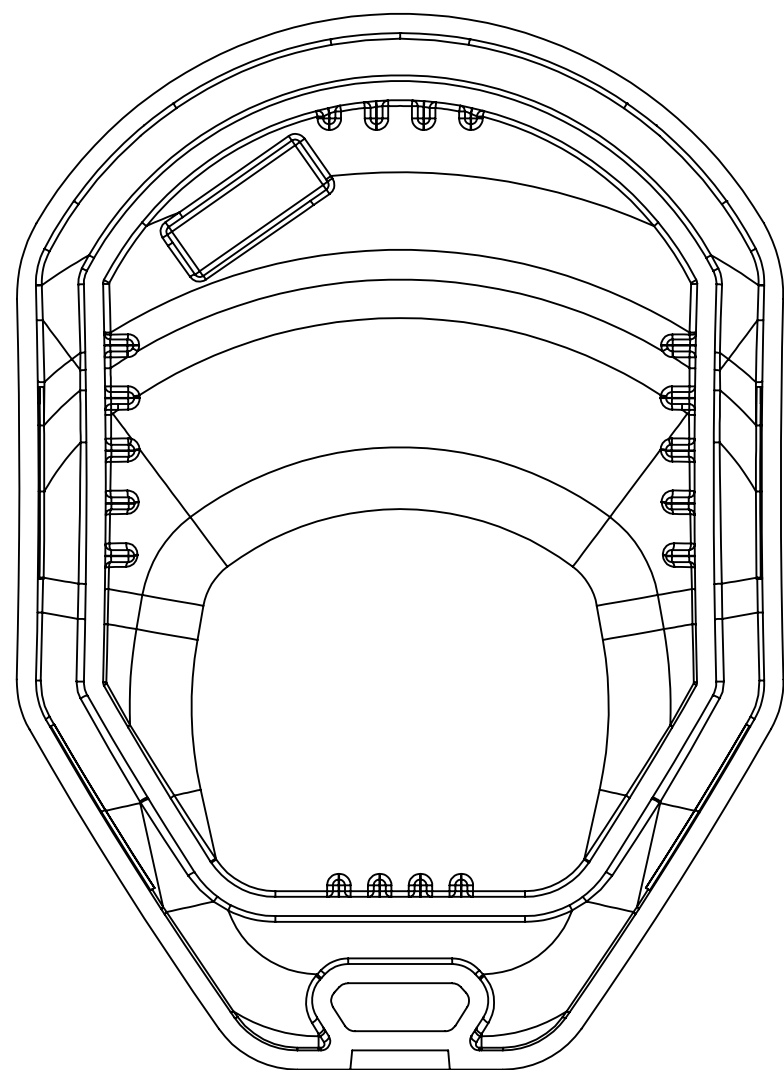
C

B

B

A

A



DETAIL F
SCALE 4 : 1

MOLD TEXTURES SCALE: 2:1 SHEET 3 OF 5

PROPRIETARY AND CONFIDENTIAL
THE INFORMATION CONTAINED IN THIS
DRAWING IS THE SOLE PROPERTY OF JL
MARINE SYSTEMS INC. ANY REPRODUCTION IN
PART OR AS A WHOLE WITHOUT WRITTEN
PERMISSION OF JL MARINE SYSTEMS INC. IS
PROHIBITED.

Engineering Item Code
MP-0749

Live Item Code

Material
ABS Black

Engineering Revision
14-16

Live Revision

Engineering Description
SHELL, CM2 SHALLOW WATER ANCHOR REMOTE, BOTTOM

Weight
0.0211bs

Surface Area
17.509in²

Volume
0.569in³

UNLESS OTHERWISE SPECIFIED
DIMENSIONS ARE IN INCHES
UNMARKED RADII OR CHAMFERS
.02 ± .005
UNMARKED TOLERANCES ARE
.X ± .1
.XX ± .01
.XXX ± .005
ANGLES ±1°

8 7 6 5 4 3 2 1

JL MARINE INTERNAL REFERENCE ONLY

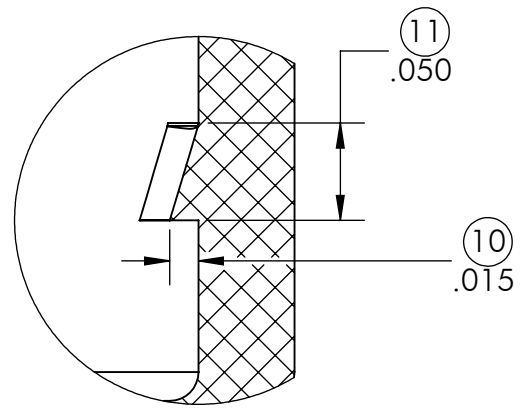
ENSURE FITMENT USING BOTH A TOP PLASTIC (MP-0748) AND A MEMBRANE (MA-0472 OR MA-0473) PART

MOLD SPECIFICATIONS

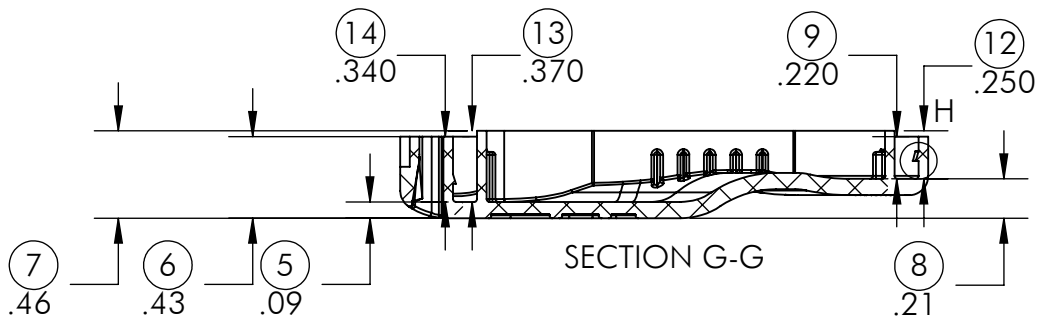
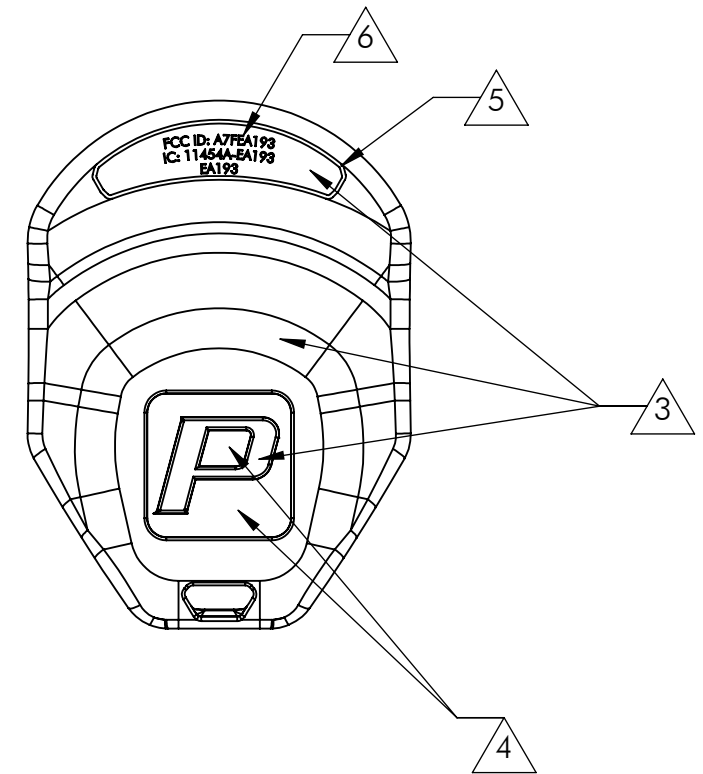
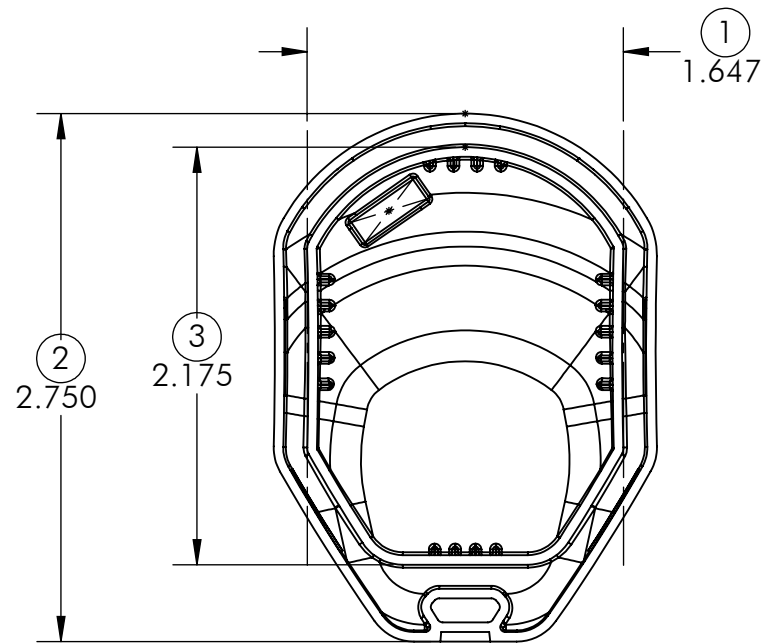
1. MOLD IS SINGLE CAVITY NON-FAMILY.
2. MACHINE FINISH ON SURFACES UNLESS OTHERWISE SPECIFIED
3. SPI D3 SURFACE FINNISH ON ALL "NON-INDENTED" SURFACES ON EXTERIOR OF PART INCLUDING BUT NOT LIMITED TO NOTED AREAS
4. SPI A2 SURFACE FINISH ON "INDENTED PORTION OF P-LOGO"
5. SPI A2 SURFACE FINISH ON "SHALLOW REGULATORY MARKING AREA PERIMETER"
6. "SHALLOW REGULATORY MARKING AREA" SHOULD BE AN INSERT AND THE FOLLING INFORMATION MUST BE ADDED BY POLISHING

THE LETTERS TO A SPI A2 SURFACE FINISH:

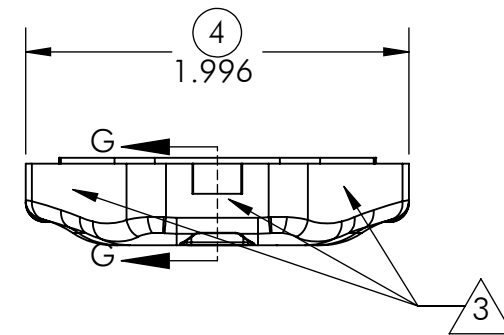
1. FCC ID: A7FEA193
2. IC: 11454A-EA193
3. EA193



DETAIL H
SCALE 10 : 1



SECTION G-G



FIRST ARTICLE DRAWING SCALE: 1:1 SHEET 4 OF 5

PROPRIETARY AND CONFIDENTIAL
THE INFORMATION CONTAINED IN THIS
DRAWING IS THE SOLE PROPERTY OF JL
MARINE SYSTEMS INC. ANY REPRODUCTION IN
PART OR AS A WHOLE WITHOUT WRITTEN
PERMISSION OF JL MARINE SYSTEMS INC. IS
PROHIBITED.

Engineering Item Code MP-0749	Engineering Revision 14-16
Live Item Code	Live Revision
Material ABS Black	

Engineering Description
SHELL, CM2 SHALLOW WATER ANCHOR REMOTE, BOTTOM

Weight 0.021 lbs
Surface Area 17.509 in ²
Volume 0.569 in ³

UNLESS OTHERWISE SPECIFIED
DIMENSIONS ARE IN INCHES
UNMARKED RADII OR CHAMFERS
.02 ± .005
UNMARKED TOLERANCES ARE
.X ± .1
.XX ± .01
.XXX ± .005
ANGLES ± 1°

JL MARINE INTERNAL REFERENCE ONLY

ENSURE FITMENT USING BOTH A TOP PLASTIC (MP-0748) AND A MEMBRANE (MA-0472 OR MA-0473) PART

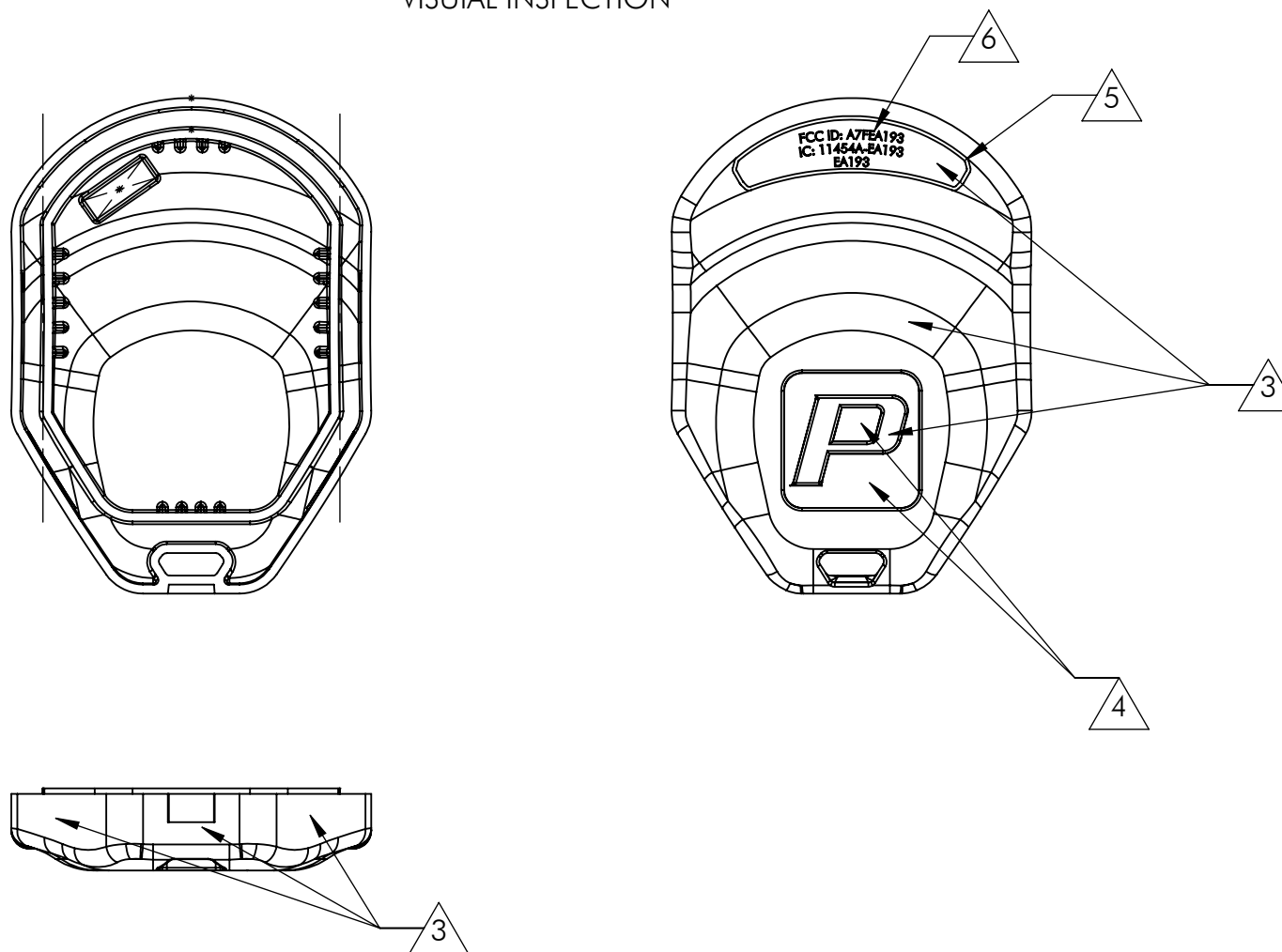
MOLD SPECIFICATIONS

1. MOLD IS SINGLE CAVITY NON-FAMILY.
2. MACHINE FINISH ON SURFACES UNLESS OTHERWISE SPECIFIED
3. SPI D3 SURFACE FINNISH ON ALL "NON-INDENTED" SURFACES ON EXTERIOR OF PART INCLUDING BUT NOT LIMITED TO NOTED AREAS
4. SPI A2 SURFACE FINISH ON "INDENTED PORTION OF P-LOGO"
5. SPI A2 SURFACE FINISH ON "SHALLOW REGULATORY MARKING AREA PERIMETER"
6. "SHALLOW REGULATORY MARKING AREA" SHOULD BE AN INSERT AND THE FOLLING INFORMATION MUST BE ADDED BY POLISHING

THE LETTERS TO A SPI A2 SURFACE FINISH:

1. FCC ID: A7FEA193
2. IC: 11454A-EA193
3. EA193

VISUAL INSPECTION



QC DRAWING SCALE: 1:1 SHEET 5 OF 5

PROPRIETARY AND CONFIDENTIAL THE INFORMATION CONTAINED IN THIS DRAWING IS THE SOLE PROPERTY OF JL MARINE SYSTEMS INC. ANY REPRODUCTION IN PART OR AS A WHOLE WITHOUT WRITTEN PERMISSION OF JL MARINE SYSTEMS INC. IS PROHIBITED.	Engineering Item Code MP-0749	Engineering Revision 14-16	Engineering Description SHELL, CM2 SHALLOW WATER ANCHOR REMOTE, BOTTOM	Weight 0.021 lbs	UNLESS OTHERWISE SPECIFIED DIMENSIONS ARE IN INCHES UNMARKED RADII OR CHAMFERS .02 ± .005 UNMARKED TOLERANCES ARE .X ± .1 .XX ± .01 .XXX ± .005 ANGLES ± 1°
	Live Item Code	Live Revision		Surface Area 17.509 in²	
	Material ABS Black			Volume 0.569 in³	