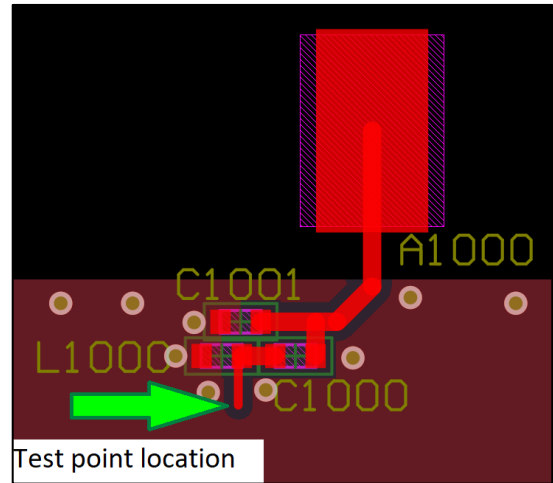
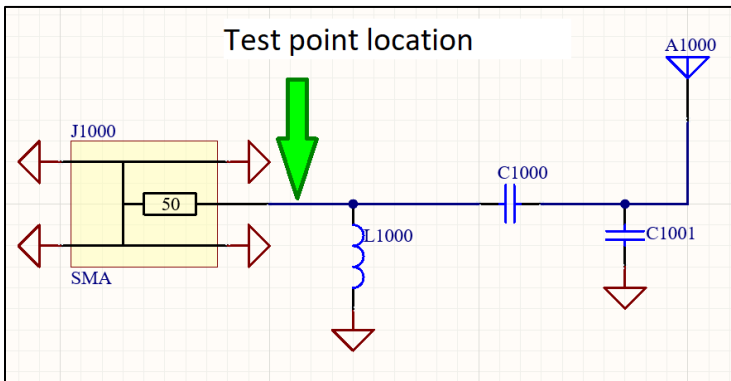


MOVE Baseboard ZR and PV (EA087/EA144) Custom Whip Antenna

General Antenna Characteristics:

Type	Custom wire whip antenna
PCB attach mechanism	1 POS IDC
Wire size (AWG)	24 (stranded)
Length (inches)	~3.2
Peak Gain (dBi)	1.0
Target frequency (MHz)	921.25

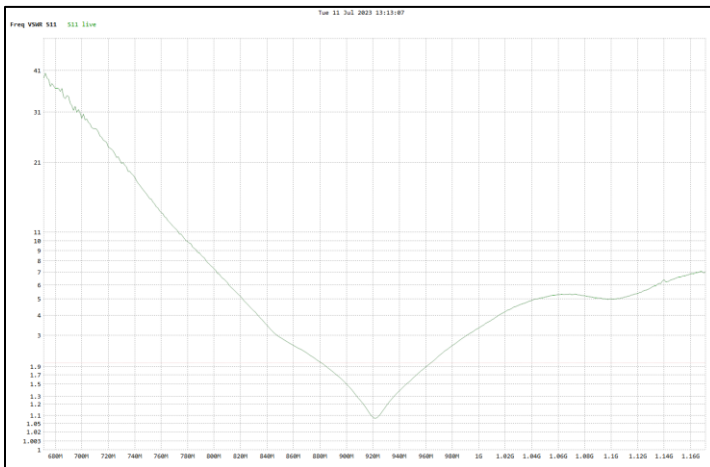


Schematic and PCB captures showing measurement locations for example data listed below.

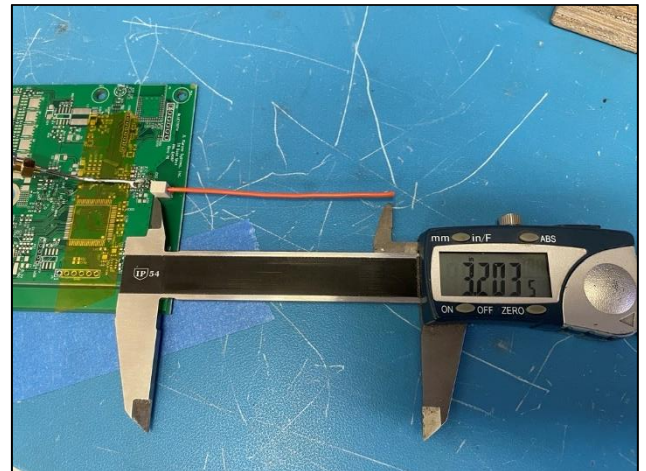
fc[MHz]	Component Value Examples		
	L1000 (nH)	C1000 (pF)	C1001 (pF)
921.25	6.8	15	N/A

Example @921.25MHz

VSWR Characteristics:



*Typical characteristics based on the tuning components used. Not guaranteed.



Example antenna terminated using IDC connector on PCB.