



YAMAHA CORPORATION

10-1, Nakazawa-cho, Naka-ku, Hamamatsu, 430-8650 JAPAN

December 10, 2008

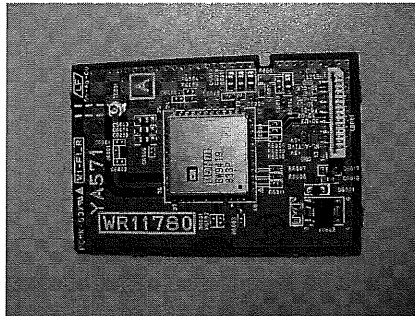
FCC ID : A6RYMC700A
Model : WR11780
Applicant : YAMAHA CORPORATION

Request for Modular Approval

The modular transmitter (Model: WR11780) is designed by YAMAHA CORPORATION. This modular transmitter can be equipped on any type of device, if the distance between the radiator and person's body keep at least 20cm or more. The modular transmitter complies the module basic requirement (Item 1 to 8) in FCC Part 15 Subpart C Section 15.212 as indicated below:

[Module basic requirement]

- (1) Have its own RF shielding.: This modular transmitter has it own RF shielding. Please refer to the A1 Photo.



A1 Photo

- (2) The modular transmitter must have buffered modulation/data inputs.: Data input to Modular transmitter is controlled as not generating excessive data speed and abnormal modulation.
- (3) The modular transmitter must have its own power supply regulation.: The module can regulate Power Supply by itself. (See Schematic) The regulator model name is R1172S331BL. This EUT provides stable voltage (DC3.3V) constantly to RF Module regardless of input voltage (DC4.0-6.0V). Therefore, this EUT complies with the requirement.
- (4) The modular transmitter must comply with the antenna requirements of Section 15.203 and 15.204(c): The antenna is connected to the module with unique connector and install inside of the end product. So, it is impossible for end users to disconnect it. Accordingly, it is complied.
- (5) The modular transmitter must be tested in a stand alone.: The modular transmitter has been performed the testing as a stand alone and then confirmed the compliance. Please refer to the Test report. (No. 29CE0117-HO-01-A)
- (6) The modular transmitter must be labeled with its own FCC ID, and, if the FCC ID is not visible when the module is installed inside another device, then the outside of the device into which the module is installed must also display a label referring to the enclosed module.: This modular transmitter is complied with this requirement. Please refer to the file of Label drawing and location.
- (7) The modular transmitter must comply with any specific rule or operating requirements applicable to the transmitter and the manufacturer must provide adequate instructions along with the module to explain any such requirements.: The necessary explanation to be complied with this requirement is contained in the manual.
- (8) The modular transmitter must comply with any applicable RF exposure requirements.: The modular transmitter complies with FCC radiation exposure requirement specified in the FCC Rules 15.247(i). Please refer to the RF exposure statement.

Yusuke Tabata
Safety standard Section Manager