

Date: July 14, 2009

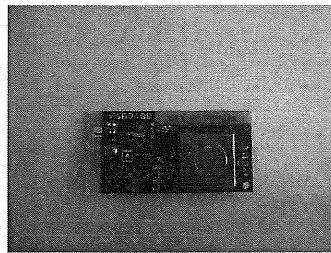
FCC ID : A6RAWCARDA
IC Number : 740B-AWCARDA
Model : AWCARD
Applicant : Yamaha Corporation

Request for Modular Approval

Wireless Module (Model: AWCARD) is designed by Yamaha Corporation. The modular transmitter complies the Modular Transmitter requirement in FCC Part 15 Subpart C Section 15.212 and Canada RSS-Gen, Issue 2, 7.1.1 and 7.1.2 as indicated below:

[Module basic requirement]

(1) Have its own RF shielding.: This modular transmitter has its own RF shielding. Please refer to the A1 Photo.



A1 Photo

(2) The modular transmitter must have buffered modulation/data inputs.:

Analog audio signal is encoded in digital data. Baseband IC FS2208 has buffer and controls data input speed to RFIC in constant. Regarding the details, refer to block diagram.

Data input to Modular transmitter is controlled as not generating excessive data speed and abnormal modulation.

(3) The modular transmitter must have its own power supply regulation.: The RF Module is constantly provided voltage (DC3.0V) through own regulator regardless of input voltage.

Therefore, this EUT complies with the requirement. Please refer to the Block Diagram.

(4) The modular transmitter must comply with the antenna requirements of Section 15.203 and 15.204(c): The antenna of this modular transmitter is printed antenna and there is not a connector. It is impossible for end users to replace the antenna, because the antenna is mounted inside of the EUT. Therefore, the equipment complies with the antenna requirement of Section 15.203.

(5) The modular transmitter must be tested in a stand alone.: The modular transmitter has been performed the testing as a stand alone and then confirmed the compliance. Please refer to the FCC/IC Test reports.(29JE0008-HO-01-A)

(6) The modular transmitter must be labeled with its own FCC ID/IC Number, and, if the FCC ID/IC Number are not visible when the module is installed inside another device, then the outside of the device into which the module is installed must also display a label referring to the enclosed module.: This modular transmitter is complied with this requirement. Please refer to the Label drawing and location.

(7) The modular transmitter must comply with any specific rule or operating requirements applicable to the transmitter and the manufacturer must provide adequate instructions along with the module to explain any such requirements.: The necessary explanation to be complied with this requirement is contained in the manual.

(8) The modular transmitter must comply with any applicable RF exposure requirements.:

The modular transmitter complies with FCC and IC radiation exposure requirement specified in the FCC Rules 15.247(i), and IC Rules RSS-102. Please refer to the RF Exposure sheet.

K. Tamai 14 Jul '09

Kazushi Tamai
Engineering Manager
Technology Development Group3
Yamaha Corporation