

C4D-4G4USAB_V7+ - INSTALLATION GUIDE

V 1.0

11/06/2019



Table of contents

Preface	3
Warnings and notices	3
FCC Regulations	3
FCC RF Exposure Information (SAR)	4
1. Hardware features	5
2. Hardware description	6
2.1 External view	6
2.2 Internal view	6
2.3 OBD connector pin out	7
2.4 OBD adapter wires	7
3. Preparing/installing the device	8
3.1 Open the device	8
3.2 Insert the SIM card	10
3.3 Properly close the device	11
3.4 Install the OBD Dongle	12
4. LED sequences	12
5. Support	12

Preface

The information contained in this installation guide is subject to changes in order to improve the reliability, design or features without prior notice. Mobile Devices Ingénierie reserves the right to make changes in the content without obligation to notify any person or organisation of such changes or improvements. Mobile Devices Ingénierie can in no event be held liable for technical or editorial errors or omissions herein, nor for incidental, special or consequential damages from the furnishing, performance or use of this installation guide.

Please contact our technical support for current updates and supplemental information concerning the use and operation of this or other Mobile Devices Ingénierie products.

Warnings and notices



The exclamation point within an equilateral triangle is intended to alert the user to the presence of important operating and maintenance (servicing) instructions in the literature accompanying the product.

Please read the installation guidelines, as well as the safety and operating instructions before operating your device. Follow all instructions and heed all warnings in the installation guide.

There is a risk of explosion if the battery is replaced by a wrong battery type. Please discard empty battery according to local regulations.

Dispose of used batteries according to the instructions.

FCC Regulations

This device complies with part 15 of the FCC Rules. Operation is subject to the following two conditions: (1) This device may not cause harmful interference, and (2) this device must accept any interference received, including interference that may cause undesired operation.

This device has been tested and found to comply with the limits for a Class B digital device, pursuant to Part 15 of the FCC Rules. These limits are designed to provide reasonable protection against harmful interference in a residential installation. This equipment generates, uses and can radiated radio frequency energy and, if not installed and used in accordance with the instructions, may cause harmful interference to radio communications. However, there is no guarantee that interference will not occur in a particular installation. If this equipment does cause harmful interference to radio or television reception, which can be determined by turning the equipment off and on, the user is encouraged to try to correct the interference by one or more of the following measures:

- Reorient or relocate the receiving antenna.
- Increase the separation between the equipment and receiver.
- Connect the equipment into an outlet on a circuit different from that to which the receiver is connected.
- Consult the dealer or an experienced radio/TV technician for help.

Caution: Changes or modifications not expressly approved by the party responsible for compliance could void the user's authority to operate the equipment.

FCC RF Exposure Information (SAR)

This device is designed and manufactured not to exceed the emission limits for exposure to radio frequency (RF) energy set by the Federal Communications Commission of the United States.

During SAR testing, this device is set to transmit at its highest certified power level in all tested frequency bands, and placed in positions that simulate RF exposure in usage **near the body with the separation of 15 mm**. Although the SAR is determined at the highest certified power level, the actual SAR level of the while operating can be well below the maximum value. This is because the device is designed to operate at multiple power levels so as to use only the power required to reach the network. In general, the closer you are to a wireless base station antenna, the lower the power output.

The exposure standard for wireless employs a unit of measurement known as the Specific Absorption Rate, or SAR. The SAR limit set by the FCC is 1.6W/kg.

The FCC has granted an Equipment Authorization for this model device with all reported SAR levels evaluated as in compliance with the FCC RF exposure guidelines. SAR information on this model device is on file with the FCC and can be found under the Display Grant section of www.fcc.gov/oet/ea/fccid after searching on FCC ID: **A6GC4D-4G4USV7**.

For this device, the highest reported SAR value for usage near the body is **1.509** W/kg.

While there may be differences between the SAR levels of various devices and at various positions, they all meet the government requirement.

SAR compliance for body operation is based on a separation distance of **15mm** between the unit and the human body.

1. Hardware features

OBD Dongle		
Performance	Processor	Cortex A5 - 500MHz
	RAM	1 Gbytes
	NAND Flash	2 Gbytes
Power supply	External power supply range	8-18V
	External voltage measurement	•
	Li-pol battery	270mAh
Communication	Modem	4G Cat.4 module (LE910C4-NF)
	Modem antenna	Internal
	SIM	Micro SIM clot
WLAN	Wifi	WiFi 802.11 a/b/g/n/ac 2.4GHz,5 GHz
	Bluetooth	BT 5.0 /BT 2.0
Positioning	GNSS receiver	U-blox M8 (GPS, GLONASS)
	GNSS antenna	Internal
Interface & Telematics features	IMU	Accelerometer $\pm 2/4/8/16$ G Gyroscope $\pm 125/245/500/1000/2000$ dps
	OBD protocols	CAN, KWP2000, VPW, PWM
	CAN interface	Single CAN coprocessor
	Buttons	1 reset button
	Leds	2 bicolor LED
Environmental	Connectors	OBD connector
	Operating temperature	-20°C/+50°C with Battery -20°C/+60°C without battery
	Dimensions	With OBD connector: 27x69x51 mm Without OBD connector: 27x56x51 mm

2. Hardware description

2.1. External view

- 1 : OBD connector
- 2 : Reset button
- 3 : Power led
- 4 : Signal led



2.2. Internal view

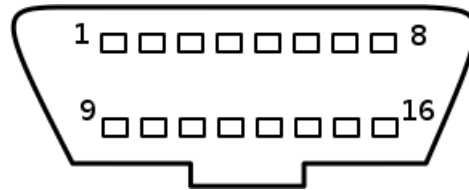
- 5 : GNSS antenna
- 6 : SIM holder
- 7 : Internal battery*



* Please read warnings section at the beginning of the installation guide

2.3 OBD connector pin out

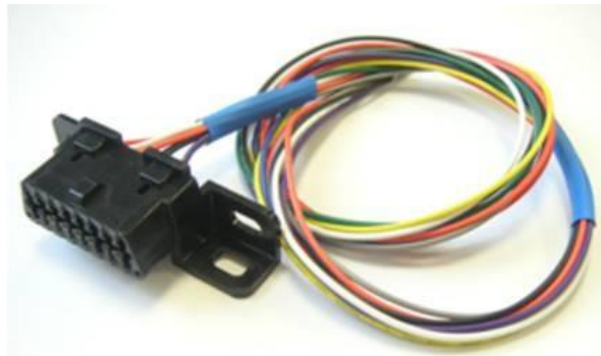
Pin #	Comment
1	OEM specific
2	J1850+ (PWM/VPW)
3	OEM specific
4	Chassis ground
5	Signal ground
6	CAN High
7	K line
8	OEM specific
10	J1850- (PWM)
11	OEM specific
14	CAN low
15	L line
16	Battery voltage



2.4 OBD adapter wires

This adapter is only used to connect the OBD to a computer (laptop/desktop).

Pin #	Wire color
2	Yellow
4	Black
5	Grey
6	Green
7	Blue
10	Violet
14	Orange
15	White
16	Red



3. Preparing/installing the device

Those operations may need the use of specific tools like :

- TORX pattern TX5 screwdriver for the screw.
- Small slotted screwdriver to remove the cover.
- Thin tweezers to insert/remove the SIM card.

3.1. Open the device

Remove the two screw using TX5 screwdriver



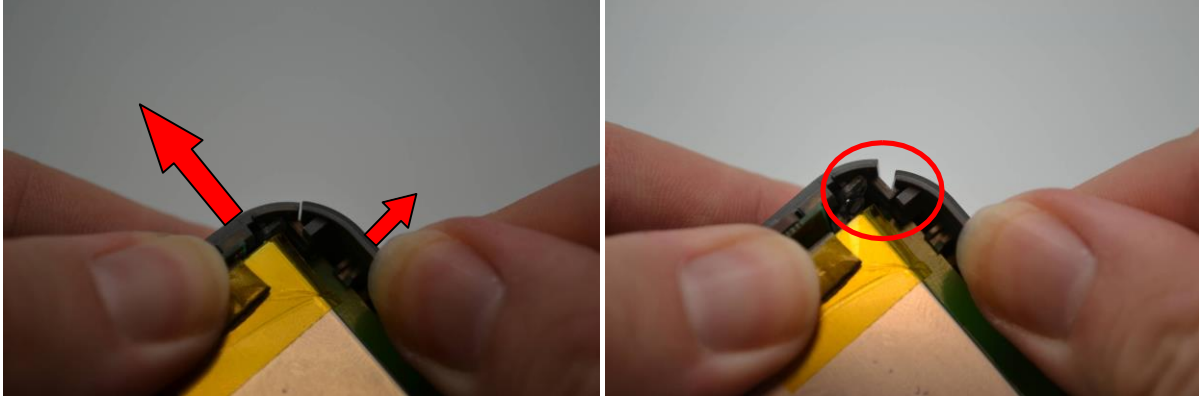
Use slotted screwdriver to pop-out the top cover on both side.



Slide the top cover heading back to remove it.



Move apart the side of the device and pull the corner of the back cover out of his spot



Pull the back cover on the rear and remove the back cover.

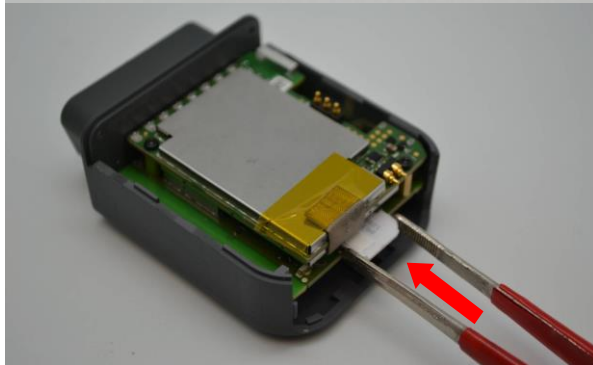
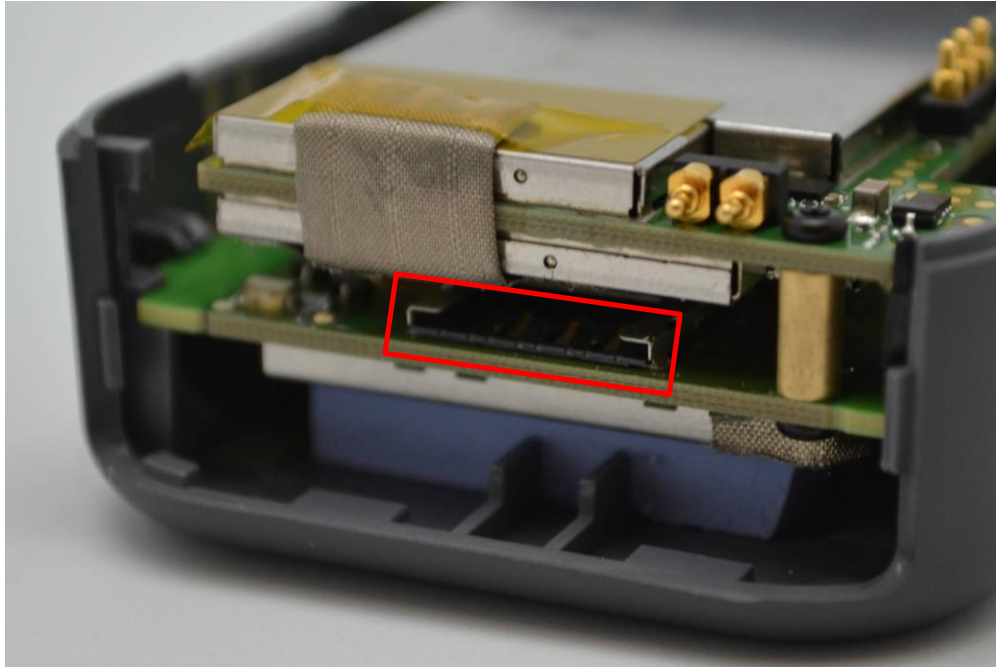


Device is now open



3.2. Insert the SIM card

The SIM card slot is located between the two electronic cards.



Insert the card with contact on bottom into the slot and push it as far as it will go.

Once inserted the SIM card looks like this:

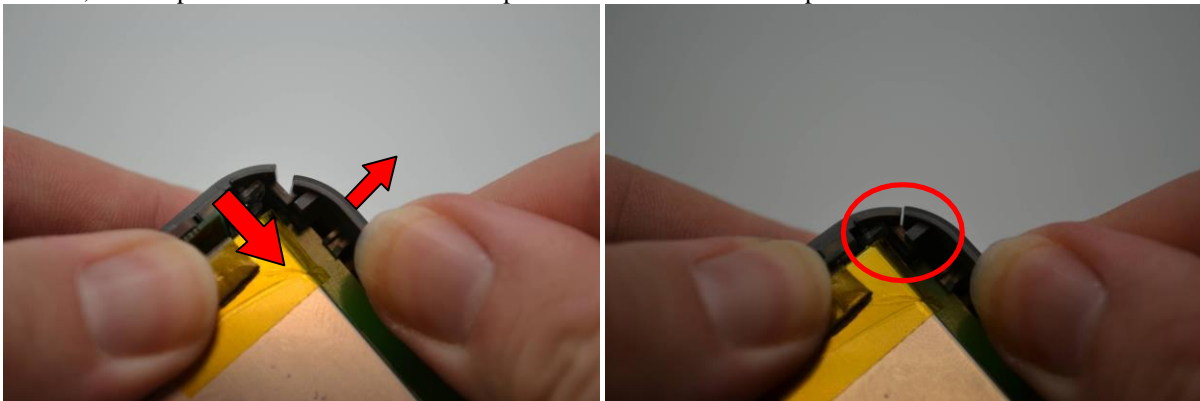


3.3. Properly close the device

First, insert the back cover beginning with corner near the power led.



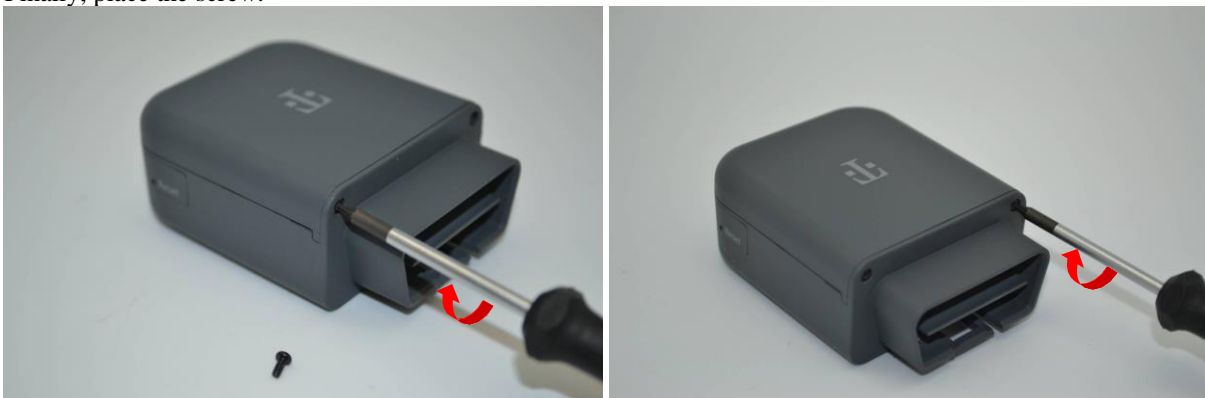
Second, Move apart the side of the device and push the back cover on the spot



Third, insert the top cover beginning with the back and push on top to clip-on the top cover



Finally, place the screw.



3.4. Install the OBD Dongle

Connect the OBD Dongle on your vehicle OBD connector.

4. LED sequences

The Dongle has a two-coloured LED, green and red.
When both colours are brightened, you can see an orange light.

Green LED		Red LED	
Sequence	Meaning	Sequence	Meaning
		Dongle OFF	OFF
No Modem /No GNSS	3times(50msON/100msOFF) 3550ms OFF	Ext. Power/Run	ON
No Modem /Fix GNSS	2times(50msON/100msOFF) 3700ms OFF		
Modem OK /No GNSS	1 time (50ms ON/100ms OFF) 3850ms OFF		
Modem OK /Fix GNSS	2000ms ON 2000ms OFF		
		Shutdown/Hibernate	30ms ON / 1 s OFF
		Idle/Sleep	30ms ON / 1 s OFF

5. Support

For all questions not related in this installation guide, please contact the support team by email at support@mobile-devices.fr