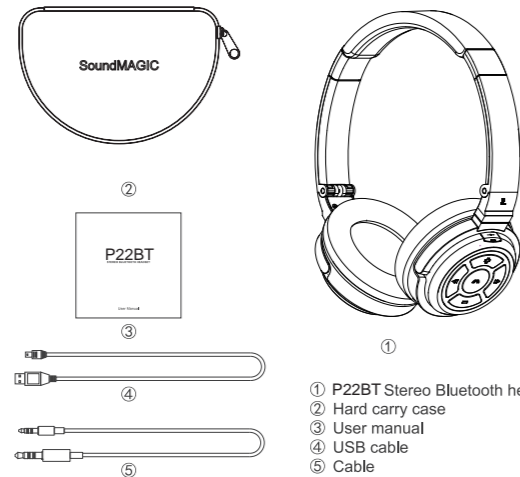


P22BT

STEREO BLUETOOTH HEADSET

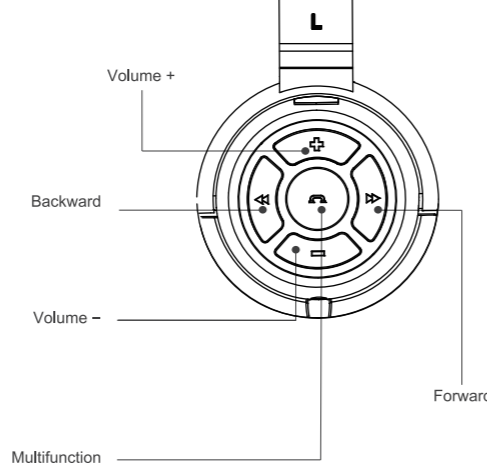
User Manual

I. Packing List



- ① P22BT Stereo Bluetooth headset
- ② Hard carry case
- ③ User manual
- ④ USB cable
- ⑤ Cable

II.Features



III.Basic Operations

Startup
Press the "Multifunction" for 3 seconds, when the blue light is on, the device starts up.

Shutdown
After startup, press the "Multifunction" for 5 seconds, the device shut down.

Enjoying music
Press the "Multifunction" to stop the music, Press the "Multifunction" again to start the music. Press the "Backward" to track backward, Hold the "Backward" to fast backward. Press the "Forward" to track forward, Hold the "Forward" to fast forward.

Incoming calls
Press the "Multifunction" to answer an incoming call. Press the "Multifunction" once again to end the call. Press and hold the "Multifunction" for 2 seconds to reject an incoming call.

Redial the last telephone number
Press the "Multifunction" twice quickly to redial the number you have dial the latest.

Answer a third person's call.
If a third person calls when you are still in a conversation with another, Press the "Multifunction" for two seconds to talk with the third person. Press the "Multifunction" for two seconds once again to switch your conversation back to the previous person.

Adjust the volume
Press the "Volume +" to increase the volume. Press the "Volume -" to reduce the volume.

Voice assistant
Press "multifunction" twice fast will start up your phone's voice assistant, e.g. Siri.

Pairing

Pairing the P22BT with mobile phone with NFC function:
1. Turn on the NFC function of your mobile phone.
2. Turn on your P22BT and put your mobile phone close to the NFC recognition zone on the right earcup of the P22BT.
3. When the mobile phone displays "Pair with Bluetooth Devices?" please click on "pair", then the connection is complete. When you put your mobile phone close to the recognition zone, the connection will be complete automatically for the next time.



NFC recognition zone

Pairing the P22BT with mobile phone without NFC function:
1. Before pairing, please ensure that your P22BT is switched on (refer to the "on / off part" of the operation instructions).
2. Press the "multifunction key" for three seconds and the LED light will flicker in red and blue alternatively. This shows that the headset is in the state of search.
3. Try to search for your Bluetooth device following the operation instructions of your mobile phone and the mobile phone can find your Bluetooth Headset model BT20 properly. Then a click will complete the pairing.

Automatic connection:

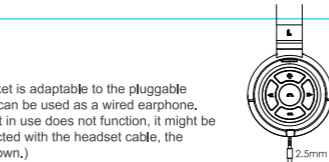
If your mobile phone has been successful paired with the headset, when the Bluetooth Headset or your mobile phone restarts, they will automatically connect to each other again within the effective distance. Within five minutes when the Bluetooth Headset returns to the effective distance, the disconnected headset will automatically connect to your mobile phone. Otherwise, the headset will automatically shut down.

Power saving mode

The Bluetooth Headset will automatically shut down when it fails to pair with your mobile phone in five minutes after it has started.

Use as a wired earphone

The standard 2.5mm jack socket is adaptable to the pluggable headset cable ⑤; the headset can be used as a wired earphone. (Note: If the key of the headset in use does not function, it might be the case that when it is connected with the headset cable, the headset automatically shuts down.)



Headset charge

P22BT uses polymer lithium ion rechargeable battery, when you use it for the first, please give it a full charge.
1. Please use your computer or devices in 5V±0.2V output and USB cable ④ to charge your Bluetooth Headset.
2. When the red indicator light is on steadily, it means the headset is in a charging mode.
3. The normal charging time for the headset is about two hours; upon completion, the indicator light will change into blue from red.

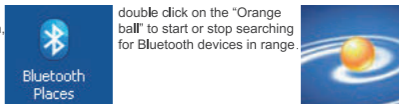
Instructions to customers:

If the power is less than 10 percent, you can hear a warning beep every two seconds from your headset and can see the indicator light flashing in red. Low power warning starts three to five minutes prior to the completely exhausting of power. You can charge your headset at any time and no need to wait until all the power is over completely. When the power is all finished, you need to recharge it as soon as possible so that you can keep the battery in a sound state.

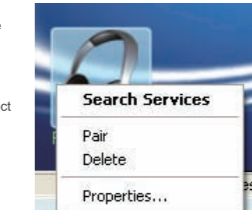
IV.Connect with computer

P22BT headphone connect with Computer Notebook and PC with Bluetooth feature, following the setting for Bluetooth headphone Searching and Pairing connection. For Computer do not integrate with Bluetooth feature, have to get an external Bluetooth USB Dongle device and install driver for Bluetooth connection.

1. Turn on Bluetooth icon.



2. Switch on and activate the pairing mode on P22BT.

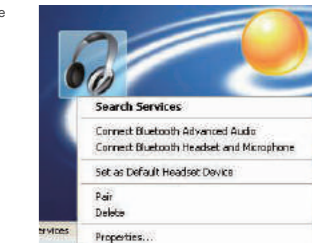


3. Right click on headphone icon and select Pair(right picture)

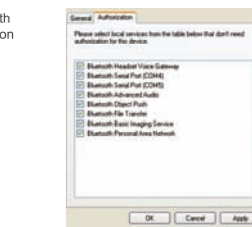


You might be prompted to enter a passkey to authenticate. Enter the default passkey code (0000)(right picture)

Right click on the headphone icon and select "Connect Bluetooth Advanced Audio" (right picture)



4. Right click headphone icon on Bluetooth Software, pop up Bluetooth Configuration -> click the Permission tab (tick all the check boxes), then Apply ->OK (right picture)

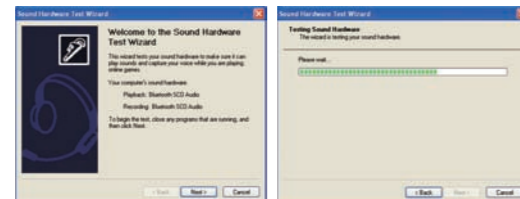


5. Double click P22BT Multifunction button, hear "Dink" sound, headphone connected with Computer. Press once disconnect with Computer. Double click again for re-connect.

6. For Windows XP Operating system as an example, go to Control Panel, find Sounds and Audio Devices, click on Audio tab. Under Sound Playback section: select Bluetooth AV Audio. Under Sound recording section: select Bluetooth SCO Audio (right picture)



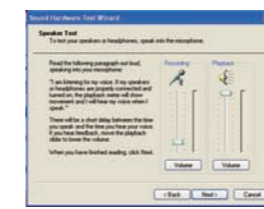
Click on "Test hardware" button, it will appear, (below picture), then click Next.



await the process bar finish. Then pop up, (right picture), now perform Bluetooth microphone testing. By seeing the visual feedback (green bar) during recording testing process to confirm that the microphone is working. If no sound, double click the feature button and testing again.



8. Click "Next" button (right picture) now testing the speaker. If the speakers are working properly, you will hear the spoken words. If no sound, check the volume setting on Bluetooth headphone. Finally, click "Next" -> "Finish" -> "Apply" -> "Confirm".



Communication software audio setting up:
Take QQ as an example: Open QQ system setup -> Audio Video -> Language setting, audio input change to Bluetooth SCO Audio, audio output change to Bluetooth AV Audio, then confirm and finish the setting. Now the communication can through the Bluetooth headphone. In general, same setting up for any communication software, just change audio input as Bluetooth SCO Audio and audio output as Bluetooth SCO Audio.

Gaming software audio setting up:
Same setting up for any Gaming software, in general just change the default audio input setting to Bluetooth SCO Audio, audio output to Bluetooth AV Audio. If the game no sound, maybe the default audio output does not set to Bluetooth output.

V.Specifications

Technology Standard.....Bluetooth V4.1
Transducer type.....Dynamics,40 mm,Neodymium
Wireless frequency.....2.4-2.4835 GHz
Transmission distance.....13 m
DC resistance.....32±3 Ω
Sensitivity.....95±3 dB
Transmission power.....Class 2
Working current.....30 mA
Continuous playing music.....18-20 h
Conversation time.....13-15 h
Standby time.....640h
Freq.Response.....20 Hz-20 KHz
Audio Output.....CD sound quality,44,1,48 KHz
16bit stereo
Power management mode.....Park, Sniff, Hold, Sleep
Operation/storage.....-20°C to 60°C
weight.....158 g
Colors.....black

VI.Maintenance and Cautions

1. Any abnormal use or non authorized service repair on headphone, warranty will be void.
2. Fully charged the headphone before first time use.
3. Only use a dry and soft cloth to clean the headphone.
4. Don't let the headphones touch any sharp objects to avoid any scratch or damage.

5. Do not charging the headphone for long period of time.
6. Do not keep the headphone in extreme temperature environment.
7. Do not use in high humidity environment.
8. Do not keep in chemicals environment.
9. Do not keep in strong magnetic fields environment.
10. Do not keep in high humidity environment.
11. When not using the headphone for extended periods of time, charge it regularly. (about 1 to 2 months)

VII.Frequency Questions and Answers

Problem	Possible cause	Solution
Headphone cannot be switched on	The headphone battery is flat	Recharge the headphone battery
Headphone automatically switched off	Battery is flat / headphone does not Pair	Recharge the headphone battery / Pairing timeout (within 5 minutes)
Incorrect passkey appear	The headphone and audio source devices are interference each other	Re-pair the headphone and audio source devices
No audio signal after Bluetooth connected	Mobile / Audio source - Bluetooth feature is switched off	Mobile / Audio source - switch on Bluetooth feature
Distorted sound / Humming noise	Interference from other devices	Move to other location with less interference
Voice sound at low level	The volume is adjusted too low	Increase the volume

Problem	Possible cause	Solution
Music sound at low level	Headphone and audio source device volume is adjusted too low	Increase the volume on headphone and audio source device
NFC connection cannot be established	Strong magnetic field around	Move to other location with less magnetic field
No music sound when connected with computer	Does not setting with high quality audio connection	Setting with high quality audio
Cannot work out voice communication	Audio setting problem	Follow the steps to perform Audio setting
Low-quality sound when connected with computer	connected as Mono headset	Setting with high quality audio

VIII. Customer Service and Support

Contact with us for enquiry, our professional technical will serve you as soon as possible:
E-mail: sales@soundmagic.com.cn
Tel: +86 769-8127 0118
Fax: +86 769-8127 0128
Factory Address: The first industrial zone, Miaobianwang, Shipai Town, Dongguan City, Guangdong Province (near Gongye Dadao, or the Industrial Avenue)
To learn more about Products visit SoundMAGIC website
The Official Website: www.soundmagic.com.cn

FCC STATEMENT :

This device complies with Part 15 of the FCC Rules. Operation is subject to the following two conditions:
(1) This device may not cause harmful interference, and
(2) This device must accept any interference received, including interference that may cause undesired operation.

Warning:
Changes or modifications not expressly approved by the party responsible for compliance could void the user's authority to operate the equipment.

NOTE:

This equipment has been tested and found to comply with the limits for a Class B digital device, pursuant to Part 15 of the FCC Rules. These limits are designed to provide reasonable protection against harmful interference in a residential installation. This equipment generates uses and can radiate radio frequency energy and, if not installed and used in accordance with the instructions, may cause harmful interference to radio communications.

However, there is no guarantee that interference will not occur in a particular installation. If this equipment does cause harmful interference to radio or television reception, which can be determined by turning the equipment off and on, the user is encouraged to try to correct the interference by one or more of the following measures:
Reorient or relocate the receiving antenna.
Increase the separation between the equipment and receiver.
Connect the equipment into an outlet on a circuit different from that to which the receiver is connected.
Consult the dealer or an experienced radio/TV technician for help.

RF warning statement:

The device has been evaluated to meet general RF exposure requirement. The device can be used in portable exposure condition without restriction.