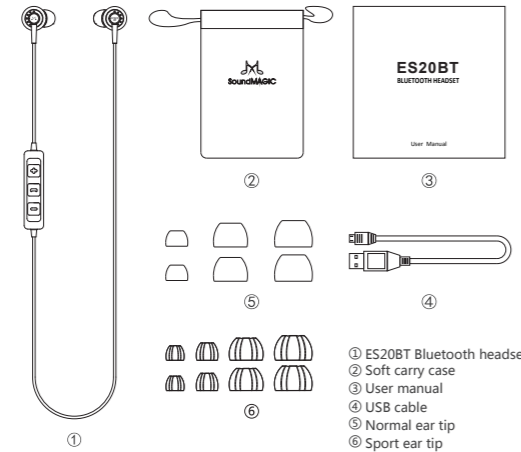


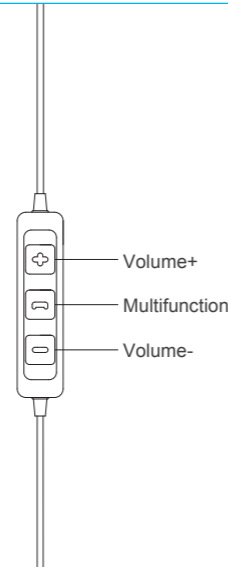
# ES20BT BLUETOOTH HEADSET

## User Manual

### 一、 Packing List



### 二、 Features



### III. Basic Operations

#### 1. Startup

Press "Multifunction" for 3 second ,when the lights on ,the device strats up.

#### 2. Shutdown

Press "Multifunction" for 3 second after strapup ,when the lights is off ,the device shut down(It can't be done on talking).

#### 3. Pairing

- the device will turn into pairing status automatically after startup.
- the blue and red light will twinkle alternately in pairing status.
- use your phone's bluetooth to search this device ,you can find the device named"ES20BT" on your screen ,click it to finish pairing ( Input "0000" if it's necessary as a password).

#### 4. Enjoy music

- press "Multifunction" to stop music,press it again to resume music.
- press "V+" twice fast to skip to next stack; hold it will speed up.
- press "V-"twice fast to skip to prevstack;hold it will go backward.

#### 5. Voice assistant

Press"multifunction" twice fast will start up your phone's voice assistant (like Siri)

#### 6. Call

- Press multifunction to answer the phone ,press it again to end the call
- Press "multifunction" to answer the third call and hold on the second call at the same time .

c) Press and hold multifunction for 3 second will end the third call and resume the second call

#### 8. Volume adjustment

- Press the "V + " to increase the volume
- Press the "V - " to reduce the volume

#### 9. Power-saving mode

This device will shut down automatically if it's not connected in 5 minutes

#### 10. Charging

The ES20BT uses a lithium-ion polymer battery. Please make it's power empty before first charging

- Please use a computer or USB charge with 5.0V+0.2V output voltage to charge the device along with the provided USB cable
- Charging time is approximately 2.5 hours
- The red light will stay on once the device is fully charged

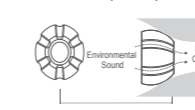
#### 11. Battery warnings

When battery power is less than 10%,the red light will twinkle twice every 5 second. Warning of low-power will be send to you 3-5 miniate before the device shut down automatically. The device can be charged anytime. If the battery is empty,please charge the device as soon as possible in order to maintain proper battery life

#### Ear Tip Selection

Your E20BT earphone comes with ear tips in a variety of sizes. Please choose the right size (pick the size that is most comfortable for you).

### Silicone Ear Tips for Sports/Workout

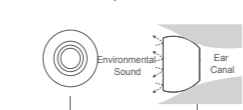


The included ear tips for sports/workout features a continuous groove, wearing these ear tips will not block external sound



For outdoor activities, such as running and cycling, we recommend using these ear tips, so that you can enjoy music while also be aware of your surrounding environment, and ensure safety.

### Silicone Ear Tips for Normal Listening



The included ear tips for normal listening provide noise isolation



When listening indoors, we recommend using the ear tips for normal listening, providing quiet listening to high quality music.

**Double Flange Silicone Ear Tips**  
The provided double-flange silicone ear tips provide even better seal for your ears.

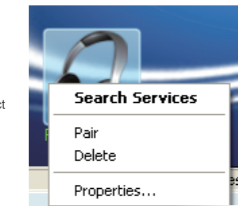
#### IV. Connect with computer ES20BT

Headset connect with computer  
Notebook and PC with Bluetooth feature following the setting for Bluetooth headset  
Searching and pairing connection  
For computer do not integrate with Bluetooth feature, have to use an external Bluetooth USB Dongle device and install driver for Bluetooth connection

1. Turn on Bluetooth icon, double click on the "Orange ball" to start or stop searching for Bluetooth devices in range.



2. Switch on and activate the pairing mode on ES20BT



3. Right click on headphone icon and select Pair,(right picture)

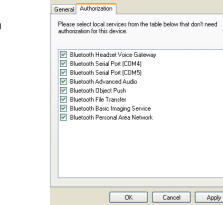


You might be prompted to enter a passkey to authenticate. Enter the default passkey code (0000),(right picture)

Right click on the headphone icon and select "Connect Bluetooth Advanced Audio" (right picture)

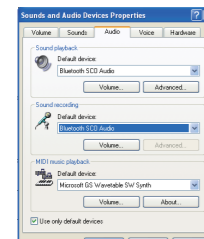


4. Right click headphone icon on Bluetooth Software, pop up Bluetooth Configuration → click the Permission tab (tick all the check boxes), then Apply →OK (right picture)

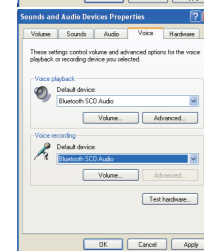


5. Double click ES20BT Multifunction button, hear "Dink" sound, headphone connected with Computer, Press once disconnect with Computer, Double click again for re-connect.

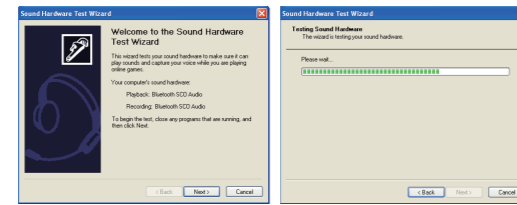
6. For Windows XP Operating system as an example, go to Control Panel, find Sounds and Audio Devices, click on Audio tab. Under Sound Playback section: select Bluetooth AV Audio, Under Sound recording section: select Bluetooth SCO Audio (right picture)



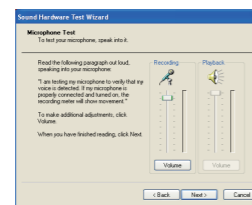
7. Click on Voice tab, under Voice Playback section: select Bluetooth AV Audio, Under Voice recording section: select Bluetooth SCO Audio (right picture)



Click on "Test hardware" button, it will appear, (below picture), then click Next.



await the process bar finish,Then pop up, (right picture),now perform Bluetooth microphone testing,By seeing the visual feedback (green bar) during recording testing process to confirm that the microphone is working.If no sound, double click the feature button and testing again.



8. Click "Next" button,(right picture) now testing the speaker, If the speakers are working properly, you will hear the spoken words. If no sound, check the volume setting on Bluetooth headphone. Finally, click "Next"→ "Finish"→ "Apply"→ "Confirm".



#### Communication software audio setting up:

Take QQ as an example: Open QQ system setup→Audio Video→Language setting, audio input change to Bluetooth SCO Audio, audio output change to Bluetooth AV Audio, then confirm and finish the setting. Now the communication can through the Bluetooth headphone.

In general, same setting up for any communication software, just change audio input as Bluetooth SCO Audio and audio output as Bluetooth SCO Audio.

#### Gaming software audio setting up:

Same setting up for any Gaming software, in general just change the default audio input setting to Bluetooth SCO Audio, audio output to Bluetooth AV Audio. If the game no sound, maybe the default audio output does not set to Bluetooth output.

### V. Specifications

Technology Standard.....	Bluetooth V4.1
Transducer type.....	Dynamics,13.5 mm,Neodymium
Wireless frequency.....	2.402~2.480 Ghz
Transmission distance.....	10 m
DC resistance.....	16±10% Ω
Sensitivity.....	107±2dB@1KHz
Transmission power.....	Class 2
Working current.....	20 mA
Continuous playing music.....	5.5~6h
Conversation time.....	4~5h
Standby time.....	200h
Freq.Response.....	20 Hz~20K Hz
Audio Output.....	CD sound quality,44.1,48 KHz 16bit stereo
Power management mode.....	Park,Sniff,Hold
Operation/storage.....	-20°C ~ 60°C
weight.....	13 g
Colors.....	Black/Red

### VI. Maintenance and Cautions

1. Only an abnormal use or non authorized service repair on headphone, warranty will be void.
2. Fully charged the headphone before first time use.
3. Only use a dry and soft cloth to clean the headphone.

4. Don't let the headphones touch any sharp objects to avoid any scratch or damage.
5. Do not charging the headphone for long period of time.
6. Do not keep the headphone in extreme temperature environment.
7. Do not use in high humidity environment.
8. Do not keep in chemicals environment.
9. Do not keep in strong magnetic fields environment.
10. Do not keep in high humidity environment.
11. When not using the headphone for extended periods of time, charge it regularly. (about 1 to 2 months)

### VII. Frequency Questions and Answers

Problem	Possible cause	Solution
Headphone cannot be switched on	The headphone battery is flat	Recharge the headphone battery
Headphone automatically switched off	Battery is flat / headphone does not Pair	Recharge the headphone battery / Pairing timeout (within 5 minutes)
Incorrect passkey appear	The headphone and audio source devices are interference each other	Re-pair the headphone and audio source devices
No audio signal after Bluetooth connected	Mobile / Audio source - Bluetooth feature is switched off	Mobile / Audio source - switch on Bluetooth feature
Distorted sound / Humming noise	Interference from other devices	Move to other location with less interference

Problem	Possible cause	Solution
Voice sound at low level	The volume is adjusted too low	Increase the volume
Music sound at low level	Headphone and audio source device volume is adjusted too low	Increase the volume on headphone and audio source device
NFC connection cannot be established	Strong magnetic field around	Move to other location with less magnetic field
No music sound when connected with computer	Does not setting with high quality audio connection	Setting with high quality audio
Cannot work out voice communication	Audio setting problem	Follow the steps to perform Audio setting
Low-quality sound when connected with computer	Connected as Mono headset	Setting with high quality audio

### VIII. Customer Service and Support

Contact with us for enquiry, our professional technical will serve you as soon as possible:  
E-mail: sales2@soundmagic.com.cn  
Tel: +86 755-8831 6487  
Fax: +86 755-8831 6487  
Factory Address: 3/zone,9 floor Building 1# Xiantian,Huaide Community,Fuyong Town,Baoan District,Shenzhen China

To learn more about Products visit SoundMAGIC website  
The Official Website: www.soundmagic.com

www.soundmagic.com

### FCC STATEMENT :

This device complies with Part 15 of the FCC Rules. Operation is subject to the following two conditions:

- (1) This device may not cause harmful interference, and
- (2) This device must accept any interference received, including interference that may cause undesired operation.

#### Warning:

Changes or modifications not expressly approved by the party responsible for compliance could void the user's authority to operate the equipment.

### NOTE:

This equipment has been tested and found to comply with the limits for a Class B digital device, pursuant to Part 15 of the FCC Rules.

These limits are designed to provide reasonable protection against harmful interference in a residential installation. This equipment generates uses and can radiate radio frequency energy and, if not installed and used in accordance with the instructions, may cause harmful interference to radio communications.

However, there is no guarantee that interference will not occur in a particular installation. If this equipment does cause harmful interference to radio or television reception, which can be determined by turning the equipment off and on, the user is encouraged to try to correct the interference by one or more of the following measures:

- 1.Reorient or relocate the receiving antenna.
- 2.Increase the separation between the equipment and receiver.
- 3.Connect the equipment into an outlet on a circuit different from that to which the receiver is connected.
- 4.Consult the dealer or an experienced radio/TV technician for help.

#### RF warning statement:

The device has been evaluated to meet general RF exposure requirement. The device can be used in portable exposure condition without restriction.