

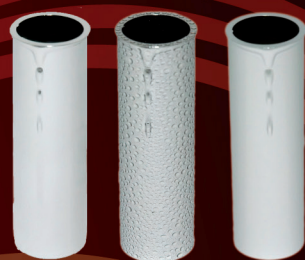
Wireless LED-Candles

With many supplies.

The new LED-lighting-technology now allows it to produce attractive looking Christmas candles. The candles can be fixed on a Christmas tree using a clip. With a remote control they work wireless.

The candles work with standard AA batteries and ensure a burning time of more than 120 hours. With the remote control using an infra-red sensor all candles can be switched on and off simultaneously. The candles create a cozy and warm light the Christmas tree to give a festive look.

The candles have a standby switch at the bottom which can reduced the consumption of electricity.



Coloured sleeves can be imposed over the LED-candles to give them a greater variation of colors.

Industrial property rights. Infringements will be prosecuted!



Thorn for the holder used for Advent wreaths, decoration Arrangements and free Arrangements

Clip to use as a christmastree-holder.



Suckholder for windows and smooth surfaces



Holder for free Arrangements.



Remote control to switch the candles on/off.



www.idl-products.com

Please contact:

IDL Products Ltd
Suite 1703, 17th Floor,
Office Tower, Convention Plaza,
1 Harbour Road,
Wan Chai, Hong Kong

idl.ltd@hotmail.com

IDL
PRODUCTS LTD

Remote control candle instuction

It is comprised of candle tube,flame cover,candle base (battery plate),PCB and No.5 battery.

- 1) Candle tube:it is high candle appearance simulate and is for receive pad and battery.



picture1

- 2) Flame cover:cover with flame.After put PCB into candle tube and expose LED in PCB at outside.Plug connection into candle tube to connect with flame cover and make LED in cover.



picture2



picture3

- 3) Put No.5 battery into candle tube,pay attention to the battery heteropolarity.



picture4

- 4) Tightening candle base(battery cover).



picture5

After assembling,remote control can operate.

Label warning statement

This device complies with part 15 of the FCC Rules. Operation is subject to the following two conditions: (1) This device may not cause harmful interference, and (2) this device must accept any interference received, including interference that may cause undesired operation.

Any Changes or modifications not expressly approved by the party responsible for compliance could void the user's authority to operate the equipment