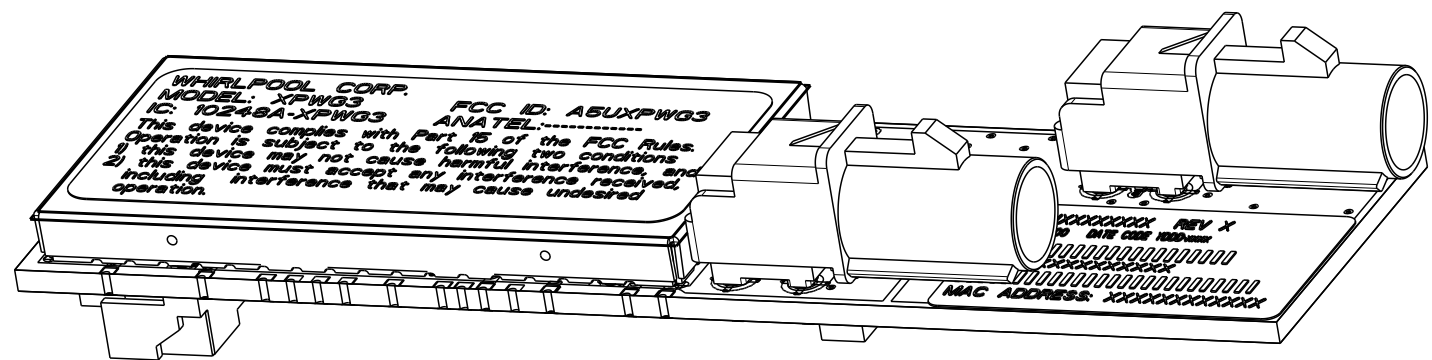
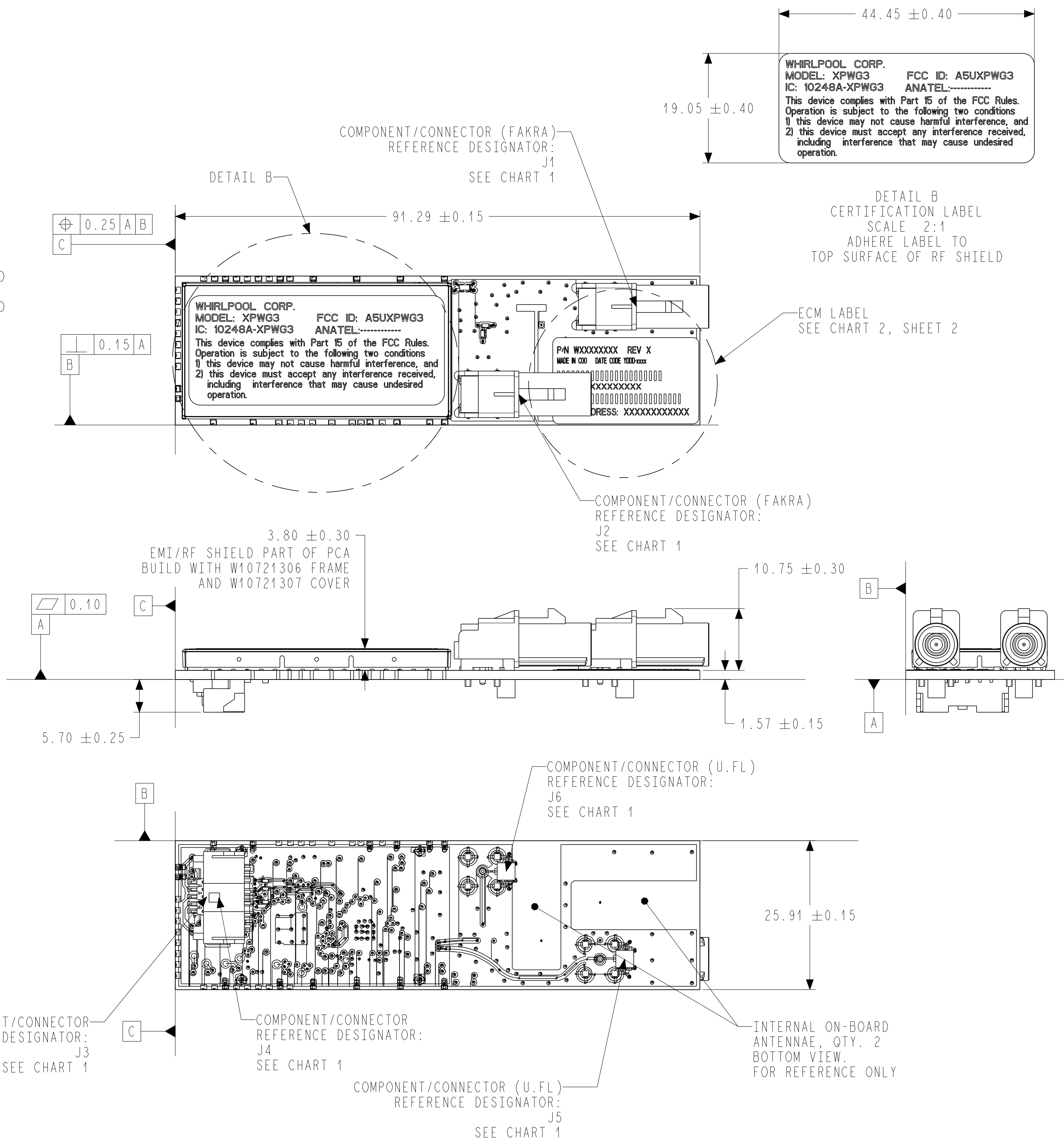


NOTES:

- 1.01. APPROVED SOURCE: JABIL® (GDL, MEXICO)
(JABIL® IS A REGISTERED TRADEMARK OF JABIL CIRCUIT, INC.).
- 1.02. ELECTRONIC DESIGN SOURCE: SJTC CONTROLS AND ELECTRONICS
- 1.03. PCB TO BE 1.57±0.15 (0.62±0.006") THICK,
DOUBLE SIDED FR4, WITH 56.7 (2 OZ) COPPER. PCB MUST COMPLY WITH C044.
SEE CAD DATA FILE PART NUMBER IN HARDWARE CONFIG. PART NUMBER COLUMN IN CHART 1.
- 1.04. TOOLED SAMPLES OF NEW OR REVISED PARTS MUST BE SUBMITTED
TO ENGINEERING FOR TESTING AND APPROVALS.
- 1.05. NO REVISION OF ANY PHYSICAL, DIMENSIONAL, OR PERFORMANCE CHARACTERISTICS
CAN BE MADE UNLESS AUTHORIZED IN WRITING BY WHIRLPOOL ENGINEERING.
- 1.06. NO MANUAL SOLDERING ALLOWED EXCEPT IN THE CASE OF REWORK.
- 1.07. SUPPLIER MUST VERIFY THE PCA ASSEMBLY PROCESS UTILIZING IPC GUIDELINES IPC-610
AND IPC/JEDEC 9704- PRINTED WIRE BOARD STRAIN GAUGE TEST GUIDELINE.
- 1.08. PART REVISION REQUIRES WHIRLPOOL EVALUATION OF ELECTROSTATIC DISCHARGE,
LINE SURGE, AND BURST TESTING. WHIRLPOOL C & E ENGINEERING WILL CREATE TEST PLAN FOR
REQUALIFYING THE CONTROL BASED ON REVISIONS BEING MADE PART REVISIONS
REQUIRE CODES APPROVAL.
- 1.09. UNLESS OTHERWISE SPECIFIED DIMENSIONS ARE RELATED TO DATUM A (PRIMARY),
DATUM B (SECONDARY) AND DATUM C (TERTIARY).
- 1.10. FOR INSPECTION RESTRAIN DATUM A.
- 1.11. VENDOR MUST BE COMPLIANT WITH GES0168.
- 1.12. THE PRINTED CIRCUIT ASSEMBLIES ON THIS DRAWING AND THEIR COMPONENT PARTS MUST BE HANDLED
WITH CONSIDERATION TO DAMAGE FROM ELECTROSTATIC DISCHARGE ESD . ESD LEVELS SHOULD BE
MAINTAINED BELOW 500 VOLTS DURING HUMAN HANDLING. THESE LIMITS ARE BASED ON THE STANDARD
ANSI/ESD 20.20-1999 OR LATEST REVISION. AND, BELOW 200 VOLTS DURING MACHINES HANDLING
(PER GES0168 SECTION 6.1.2 OR IT'S EQUIVALENT).
- 1.13. PRINTED BOARD DIMENSIONS AND TOLERANCES PER IPC-2615 STANDARD.
- 1.14. CIRCUIT BOARDS TO BE LABELED PER WHIRLPOOL SPEC. C033 AS A
"CATEGORY 1" PART IN THE "ELECTRICAL COMPONENTS OR ASSEMBLIES",
PER PARAGRAPHS 3.3 AND 3.4, AND WITH THIS INFORMATION:
A) FORMAT FOR DATE CODE:
YY IS THE LAST TWO DIGITS OF THE JULIAN YEAR
DDD IS THE THREE DIGIT JULIAN DAY CODE
xx IS THE MANUFACTURER AND LOCATION
B) FORMAT FOR 12-DIGIT SERIAL NUMBER:
NNN = PREFIX, CONTROL ASSEMBLY ID
Y = LAST DIGIT OF THE JULIAN YEAR
DDD = JULIAN DAY OF THE YEAR
XXXX = SEQUENTIAL SERIAL NUMBER BASE 36 WITH EACH DIGIT HAVING A VALUE OF 0-9 AND A-Z
A = PANEL LOCATION IDENTIFIER (A, B, C, OR D)
- 1.15. VENDOR SHALL ENSURE USE OF THE PROPER ARTWORK REVISION.
LATEST REVISION APPEARS ADJACENT TO PC BOARD PART NUMBER.
- 1.16. SPACING BETWEEN CONNECTOR BOTTOM AND BOARD SURFACE IS 0.5mm MAX PER IPC-A-610-D.
- 1.17. COMPONENT(S) REFERENCED HEREIN SHALL COMPLY WITH WHIRLPOOL'S CURRENT SPECIFICATIONS,
INCLUDING ITS RESTRICTED MATERIAL LIST SPECIFICATION GES0084 - GLOBAL.
- 1.18. NO REVISIONS OF ANY PHYSICAL, DIMENSIONAL, PROCESS, MATERIALS OR
PERFORMANCE CHARACTERISTICS CAN BE MADE UNLESS AUTHORIZED
IN WRITING BY WHIRLPOOL ENGINEERING.
- 1.19. ALL BOARDS SHALL BE TESTED TO THE LATEST RELEASED VERSION OF
TEST SPECIFICATION DEFINED IN TABLE 1 BY PE20 ECM TEST REQUIREMENTS.



ISOMETRIC VIEW
FOR REFERENCE ONLY
SCALE 2:1



W10784959	A	PCA, WIFI MODULE, GEN3, V16	W10696956(C)	W10696957(C)	NO	W10784821(A)	Y	N	Y	N	12V	WIDE	W10778695	W10779037	W10778697	W10779038
W10719303	A	PCA, WIFI MODULE, GEN3, V15				W10784813(A)	Y	N	N	Y	5V	WIN	W10778694			
W10779017	A	PCA, WIFI MODULE, GEN3, V10				W10696969(A)	Y	N	N	N	12V	WIN	W10778694			
W10779016	A	PCA, WIFI MODULE, GEN3, V07				W10696966(A)	N	N	N	N	5V	AIWI	W10778693			
W10779015	A	PCA, WIFI MODULE, GEN3, V11				W10696970(A)	Y	N	N	N	12V	WIDE	W10778695			
W10719302	C	PCA, WIFI MODULE, GEN3, V13				W10732728(E)	Y	N	N	N	5V	WIN	W10778694			

PART NO.	REV	DESCRIPTION	LAYOUT	SCHEMATIC	HARDWARE CONFIG P/N	CONFORMAL COATING REQUIRED	J4 CONNECTOR POPULATED (Y/N)	J3 CONNECTOR POPULATED (Y/N)	J1 CONNECTOR POPULATED (Y/N)	J2 CONNECTOR POPULATED (Y/N)	POWER SUPPLY	COMMUNICATION PROTOCOL	APPLICATION SOFTWARE FILE	TEST SCRIPT LITEPOINT	MFG IMAGE TEST CODE	PE20 ECM TEST REQUIREMENTS
----------	-----	-------------	--------	-----------	------------------------	-------------------------------	---------------------------------	---------------------------------	---------------------------------	---------------------------------	--------------	---------------------------	------------------------------	--------------------------	------------------------	-------------------------------

CHART 1

REV	DESCRIPTION OF CHANGE	LOC	BY	E.N.	DATE
A	RELEASE P/N W10719302	H1-1	THIMAMF	777175	22-SEP-2014
B	CHECKED BY	---	ELSTOWJ		
	P/N W10719302 TO REV B	H1-1			
	W10696956(C) WAS W10696956 IN LAYOUT FOR W10719302 IN CHART	H3-1	ENGELKN	778642	12-DEC-2014
	W10696957(C) WAS W10696957 IN SCHEMATIC FOR W10719302 IN CHART	H3-1			
C	W10732728(C) WAS W10732728 IN HW CONFIG. FOR W10719302 IN CHART	H4-1			
	CHECKED BY	---	THIMAMF		
	"TEST SCRIPT LITEPOINT" WAS "PROCESSOR TEST SCRIPT" IN CHART 1	H9-1			
	"COMMUNICATION PROTOCOL" COLUMN ADDED TO CHART 1	H8-1			
	"POWER SUPPLY" COLUMN WAS "J7 CONNECTOR POPULATED (Y/N)" IN CHART 1	H7-1			
	W10732728(D) WAS W10732728(C) IN HARDWARE CONFIG P/N COLUM FOR W10719302 ROW	H3-1			
	FCC ID: "ASUXPWG3" WAS "-----" IN CERTIFICATION LABEL	B9-1			
	IC: "10248A-XPWG3" WAS "-----" IN CERTIFICATION LABEL	B9-1	THIMAMF	785736	25-FEB-2015
	W10732728(E) WAS W10732728 (C) IN HW CONFIG. FOR W10719302 ROW IN CHART 1	H4-1			
	ADDED SHEET 2	---			
	ADDED CHART 2	A1-2			
	"ECM LABEL, SEE CHART 2, SHEET 2" WAS "SEE DETAIL A"	C9-1			
	RELEASE W10779015, W10779016, W10779017, W10784959 AND W10719303	H1-1			
	W10719302 TO REV C	H1-1			
	CHECKED BY	---	ELSTOWJ		

THIS DRAWING IS THE PROPERTY OF WHIRLPOOL CORP. IT CONTAINS CONFIDENTIAL INFORMATION BELONGING TO AND/OR
ENTRUSTED TO WHIRLPOOL. IT IS DISCLOSED IN CONFIDENCE AND SHALL NOT BE HELD, REPRODUCED, DISCLOSED OR USED
EXCEPT IN A MANNER AND FOR A PURPOSE EXPRESSLY PERMITTED BY WHIRLPOOL IN WRITING.

VENDORS SHALL NOT REVISE ANY PHYSICAL, DIMENSIONAL, OR PERFORMANCE CHARACTERISTICS UNLESS AUTHORIZED IN
WRITING BY WHIRLPOOL ENGINEERING GROUP.

WHIRLPOOL TEST SPECIFICATIONS. IF ANY, ARE NOT INTENDED TO ASSUME ANY RESPONSIBILITY FOR SUBSEQUENT PROBLEMS
WITH OR CAUSED BY THE PART, COMPONENT, OR ASSEMBLY PROVIDED BY THE SUPPLIER, AND DO NOT RELIEVE THE SUPPLIER
OF ITS OBLIGATIONS INCLUDING, BUT NOT LIMITED TO, THE NEED TO PERFORM ITS OWN TESTING, INSPECTION AND
ONGOING QUALITY CONTROL, AND ASSURING FITNESS FOR USE. ANY WHIRLPOOL RECOMMENDED TEST AND ITS OUTCOME
DO NOT IN ANYWAY LIMIT OR CHANGE THE WARRANTY CONTAINED IN WHIRLPOOL'S PURCHASE ORDER OR SUPPLY AGREEMENT.

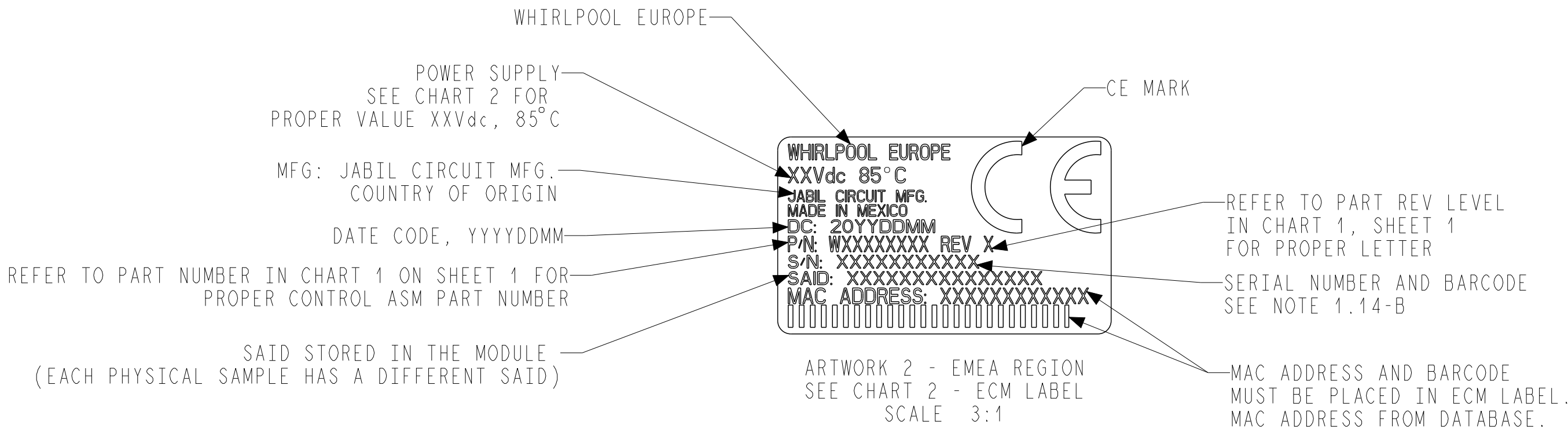
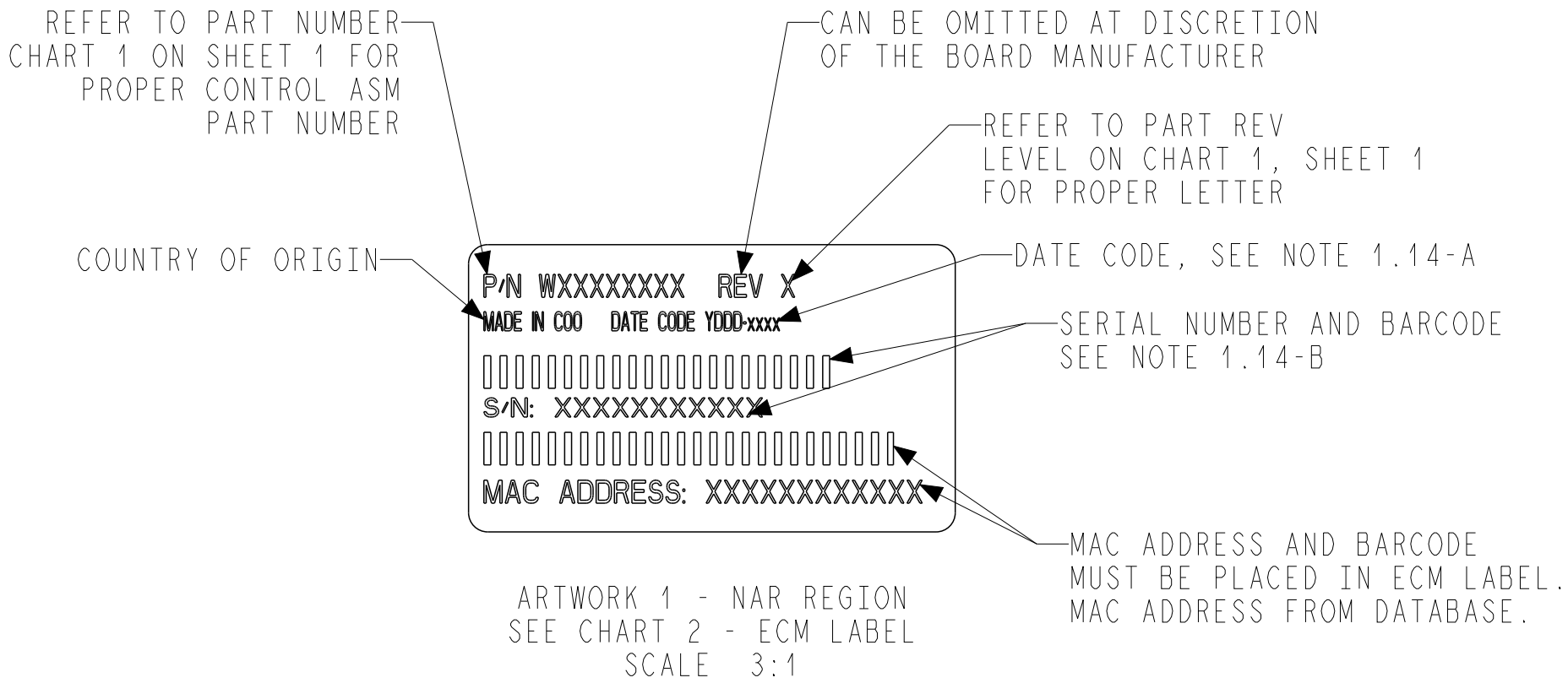
METRIC DIMENSIONS IN mm DEFAULT SCALE: 1:1	THIRD ANGLE PROJECTION	INTERPRETATION PER ASME Y14.5M-1994 22-SEP-2014	CREATION DATE
DO NOT SCALE PRINT		= SPECIAL CHARACTERISTIC	DRAWN BY THIMAMF


DESCRIPTION (ENGLISH)		PCA, WIFI MODULE, GEN3	
DESCRIPTION (LOCAL)			

 Whirlpool Corporation Benton Harbor, MI USA		DRAWING SIZE A1	SHEET 1 OF 2	DRAWING NUMBER W10719300	DRAWING REV C
--	--	--------------------	-----------------	-----------------------------	------------------

In some European factories the letter "W" of the part code mentioned herein will be automatically
replaced by the number "4000" (e.g. "W12345678" becomes "400012345678")

W10784959	ARTWORK 1 NAR REGION	12Vdc
W10719303	ARTWORK 1 NAR REGION	5Vdc
W10779017	ARTWORK 1 NAR REGION	12Vdc
W10779016	ARTWORK 2 EMEA REGION	5Vdc
W10779015	ARTWORK 2 EMEA REGION	12Vdc
W10719302	ARTWORK 1 NAR REGION	5Vdc
PART NO.	LABEL ARTWORK REGION	POWER SUPPLY
CHART 2 - ECM LABEL		



 Whirlpool Corporation Benton Harbor, MI USA	DESCRIPTION (ENGLISH) PCA, WIFI MODULE, GEN3			
	DESCRIPTION (LOCAL)			
DRAWING SIZE A1	SHEET 2 OF 2	DRAWING NUMBER W10719300	DRAWING REV C	

In some European factories the letter "W" of the part code mentioned herein will be automatically replaced by the number "4000" (e.g. "W12345678" becomes "400012345678")