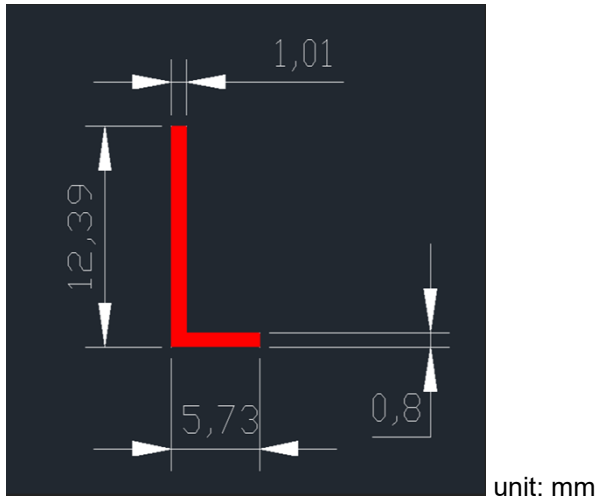


# Wireless Keyboard, KB203W

## Antenna Dimension

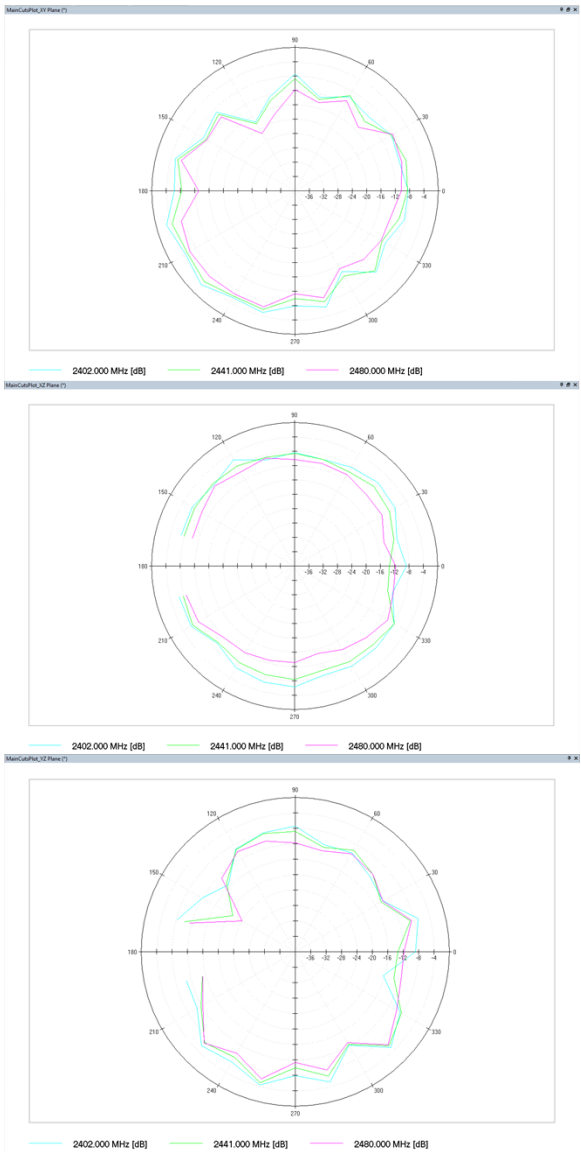


## Wireless Keyboard, KB203W OTA test data

Max. Antenna gain is -0.14dBi.

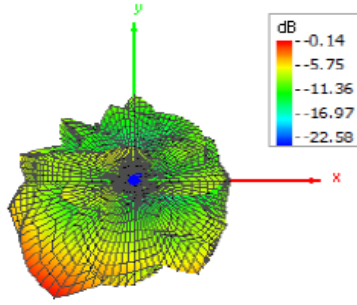
Frequency(MHz)	Efficiency(dB)	Efficiency(%)	Peak Gain(dBi)
2400.00	-7.28	18.70	-0.17
2402.00	-7.31	18.58	<b>-0.14</b>
2405.00	-7.48	17.87	-0.31
2410.00	-7.59	17.43	-0.56
2415.00	-7.60	17.38	-0.47
2420.00	-7.68	17.06	-0.55
2425.00	-7.78	16.68	-0.68
2430.00	-7.97	15.97	-0.84
2435.00	-8.04	15.71	-0.94
2440.00	-8.19	15.17	-1.16
2441.00	-8.19	15.17	-1.11
2445.00	-8.32	14.71	-1.29
2450.00	-8.47	14.21	-1.31
2455.00	-8.69	13.53	-1.42
2460.00	-8.82	13.11	-1.57
2465.00	-8.91	12.84	-1.49
2470.00	-9.13	12.21	-1.70
2475.00	-9.29	11.79	-1.69
2480.00	-9.42	11.42	-1.91
2485.00	-9.67	10.79	-2.26
2490.00	-9.85	10.34	-2.24
2495.00	-10.08	9.82	-2.39
2500.00	-10.25	9.43	-2.76

# Wireless Keyboard, KB203W OTA test phantom

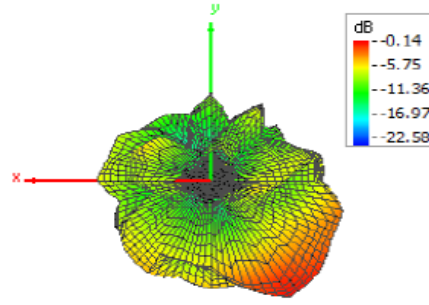


2402MHz

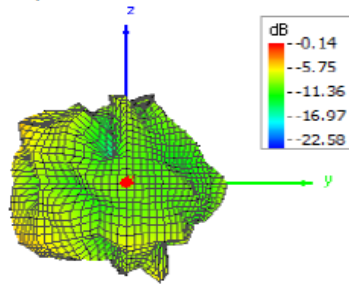
Theta = 0, Phi = 0



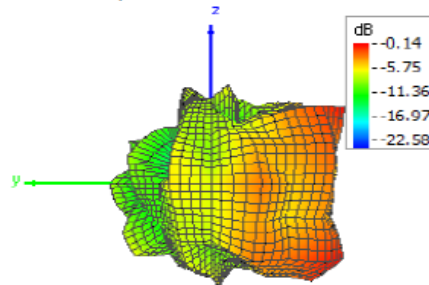
Theta = 180, Phi = 0



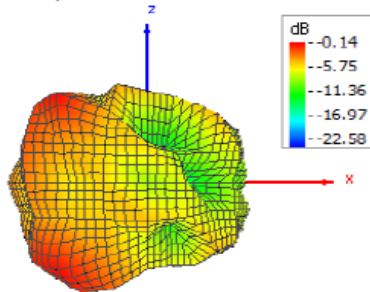
Theta = 90, Phi = 0



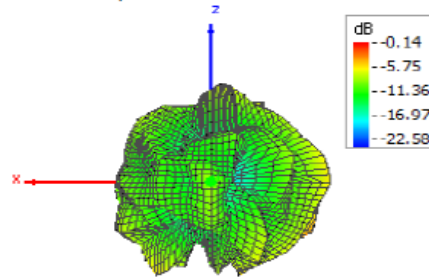
Theta = 90, Phi = 180



Theta = 90, Phi = 270

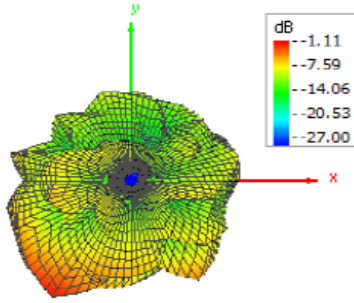


Theta = 90, Phi = 90

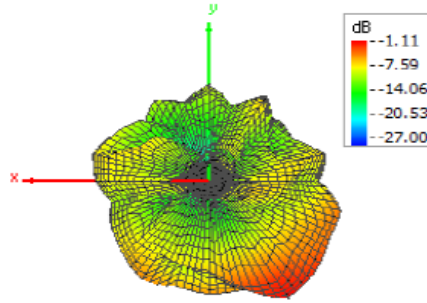


2441MHz

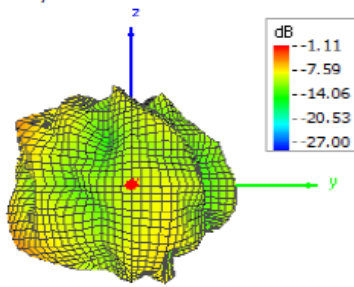
Theta = 0, Phi = 0



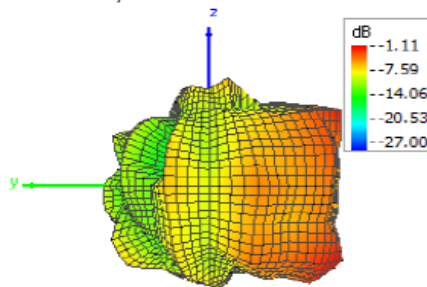
Theta = 180, Phi = 0



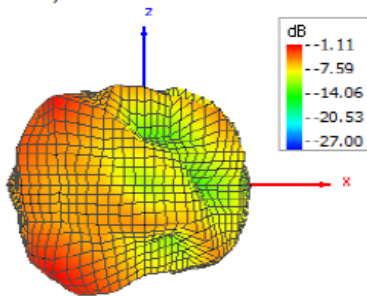
Theta = 90, Phi = 0



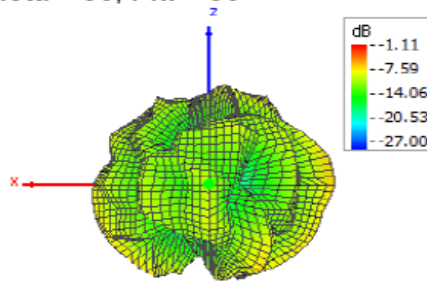
Theta = 90, Phi = 180



Theta = 90, Phi = 270

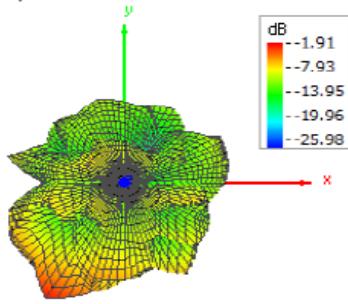


Theta = 90, Phi = 90

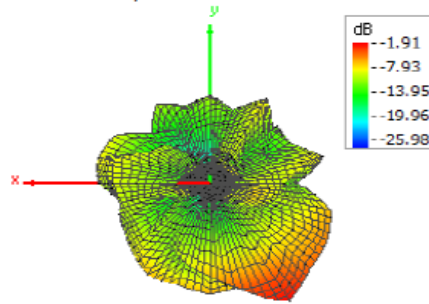


2480MHz

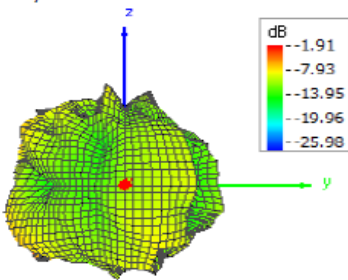
Theta = 0, Phi = 0



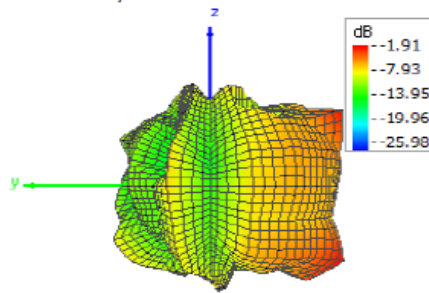
Theta = 180, Phi = 0



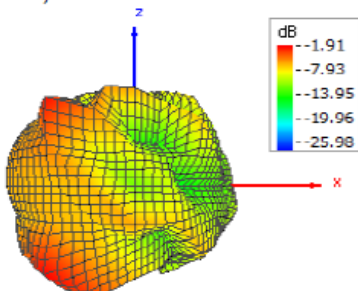
Theta = 90, Phi = 0



Theta = 90, Phi = 180



Theta = 90, Phi = 270



Theta = 90, Phi = 90

