

System Check_Head_2450MHz

DUT: D2450V2-929

Communication System: CW; Frequency: 2450 MHz; Duty Cycle: 1:1

Medium: HSL_2450_211218 Medium parameters used : $f = 2450$ MHz; $\sigma = 1.809$ S/m; $\epsilon_r = 39.718$; $\rho = 1000$ kg/m³

Ambient Temperature : 23.2 °C; Liquid Temperature : 22.2 °C

DASY5 Configuration:

- Probe: EX3DV4 - SN3925; ConvF(7.93, 7.93, 7.93) @ 2450 MHz; Calibrated: 2021/4/23
- Sensor-Surface: 1.4mm (Mechanical Surface Detection)
- Electronics: DAE4 Sn778; Calibrated: 2021/5/21
- Phantom: ELI V5.0; Type: QD OVA 002 Ax; Serial: 1131
- Measurement SW: DASY52, Version 52.10 (4); SEMCAD X Version 14.6.14 (7483)

Pin=50mW/Area Scan (71x71x1): Interpolated grid: dx=1.200 mm, dy=1.200 mm

Maximum value of SAR (interpolated) = 4.24 W/kg

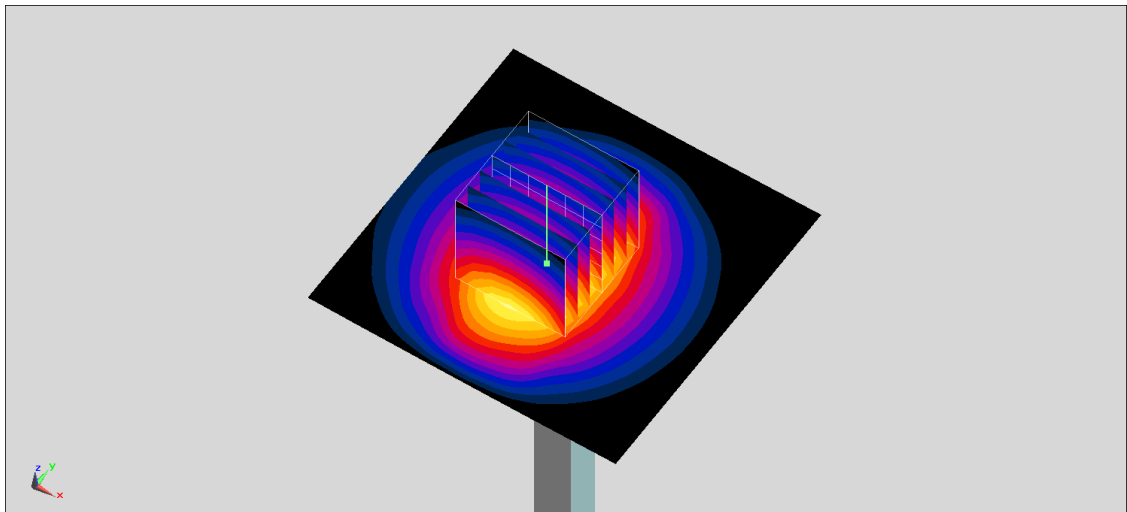
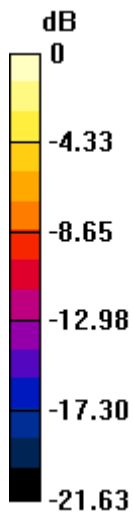
Pin=50mW/Zoom Scan (7x7x7)/Cube 0: Measurement grid: dx=5mm, dy=5mm, dz=5mm

Reference Value = 48.37 V/m; Power Drift = 0.10 dB

Peak SAR (extrapolated) = 5.19 W/kg

SAR(1 g) = 2.54 W/kg; SAR(10 g) = 1.18 W/kg

Maximum value of SAR (measured) = 4.25 W/kg



0 dB = 4.24 W/kg = 6.27 dBW/kg

System Check_Head_5250MHz

DUT: D5GHzV2-1006

Communication System: CW; Frequency: 5250 MHz; Duty Cycle: 1:1

Medium: HSL_5G_211220 Medium parameters used : $f = 5250$ MHz; $\sigma = 4.615$ S/m; $\epsilon_r = 36.243$; $\rho = 1000$ kg/m³

Ambient Temperature : 23.2 °C; Liquid Temperature : 22.2 °C

DASY5 Configuration:

- Probe: EX3DV4 - SN3925; ConvF(5.7, 5.7, 5.7) @ 5250 MHz; Calibrated: 2021/4/23
- Sensor-Surface: 1.4mm (Mechanical Surface Detection)
- Electronics: DAE4 Sn778; Calibrated: 2021/5/21
- Phantom: ELI V5.0; Type: QD OVA 002 Ax; Serial: 1131
- Measurement SW: DASY52, Version 52.10 (4); SEMCAD X Version 14.6.14 (7483)

Pin=50mW/Area Scan (81x81x1): Interpolated grid: dx=1.000 mm, dy=1.000 mm

Maximum value of SAR (interpolated) = 9.49 W/kg

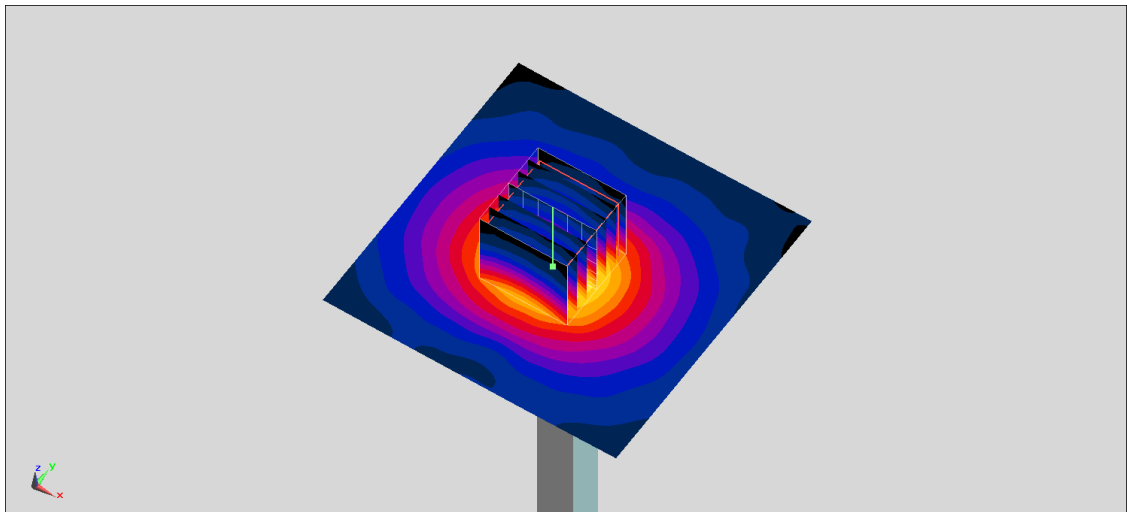
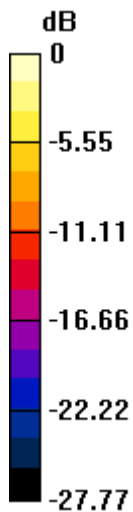
Pin=50mW/Zoom Scan (7x7x7)/Cube 0: Measurement grid: dx=4mm, dy=4mm, dz=1.4mm

Reference Value = 47.38 V/m; Power Drift = 0.14 dB

Peak SAR (extrapolated) = 14.8 W/kg

SAR(1 g) = 3.97 W/kg; SAR(10 g) = 1.15 W/kg

Maximum value of SAR (measured) = 9.80 W/kg



System Check_Head_5600MHz

DUT: D5GHzV2-1006

Communication System: CW ; Frequency: 5600 MHz;Duty Cycle: 1:1

Medium: HSL_5G_211220 Medium parameters used: $f = 5600$ MHz; $\sigma = 4.936$ S/m; $\epsilon_r = 35.613$; $\rho = 1000$ kg/m³

Ambient Temperature : 23.2 °C ; Liquid Temperature : 22.2 °C

DASY5 Configuration:

- Probe: EX3DV4 - SN3925; ConvF(4.99, 4.99, 4.99) @ 5600 MHz; Calibrated: 2021/4/23
- Sensor-Surface: 1.4mm (Mechanical Surface Detection)
- Electronics: DAE4 Sn778; Calibrated: 2021/5/21
- Phantom: ELI V5.0; Type: QD OVA 002 Ax; Serial: 1131
- Measurement SW: DASY52, Version 52.10 (4);SEMCAD X Version 14.6.14 (7483)

Pin=50mW/Area Scan (81x81x1): Interpolated grid: dx=1.000 mm, dy=1.000 mm

Maximum value of SAR (interpolated) = 10.7 W/kg

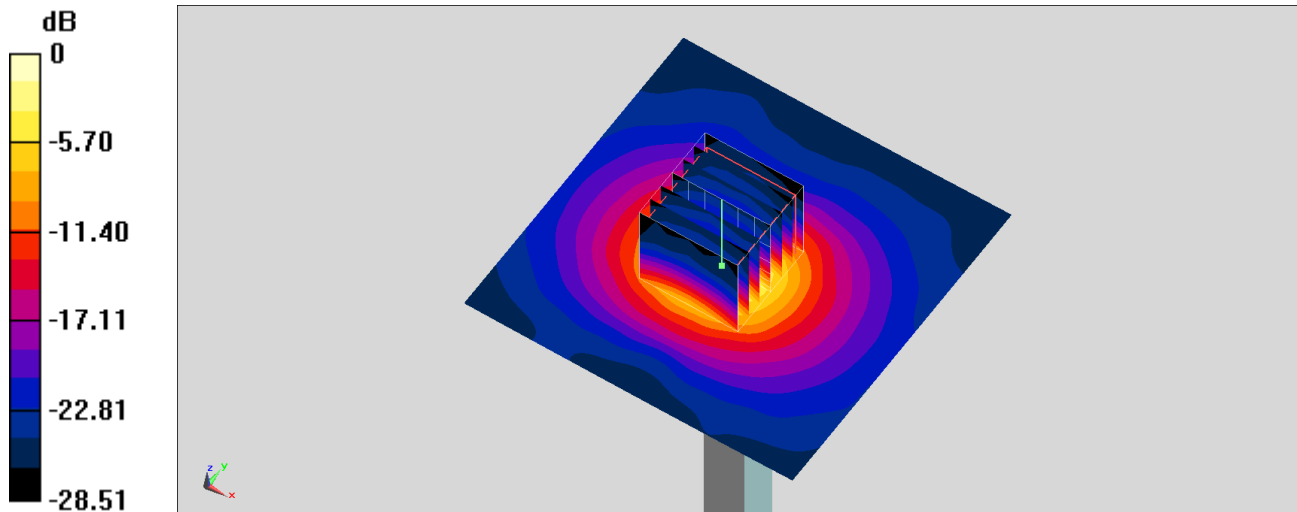
Pin=50mW/Zoom Scan (7x7x7)/Cube 0: Measurement grid: dx=4mm, dy=4mm, dz=1.4mm

Reference Value = 48.40 V/m; Power Drift = 0.05 dB

Peak SAR (extrapolated) = 17.3 W/kg

SAR(1 g) = 4.26 W/kg; SAR(10 g) = 1.23 W/kg

Maximum value of SAR (measured) = 10.9 W/kg



0 dB = 10.7 W/kg = 10.29 dBW/kg

System Check_Head_5750MHz

DUT: D5GHzV2-1006

Communication System: CW ; Frequency: 5750 MHz;Duty Cycle: 1:1

Medium: HSL_5G_211220 Medium parameters used: $f = 5750$ MHz; $\sigma = 5.115$ S/m; $\epsilon_r = 35.381$; $\rho = 1000$ kg/m³

Ambient Temperature : 23.2 °C ; Liquid Temperature : 22.2 °C

DASY5 Configuration:

- Probe: EX3DV4 - SN3925; ConvF(5.16, 5.16, 5.16) @ 5750 MHz; Calibrated: 2021/4/23
- Sensor-Surface: 1.4mm (Mechanical Surface Detection)
- Electronics: DAE4 Sn778; Calibrated: 2021/5/21
- Phantom: ELI V5.0; Type: QD OVA 002 Ax; Serial: 1131
- Measurement SW: DASY52, Version 52.10 (4);SEMCAD X Version 14.6.14 (7483)

Pin=50mW/Area Scan (81x81x1): Interpolated grid: dx=1.000 mm, dy=1.000 mm

Maximum value of SAR (interpolated) = 9.81 W/kg

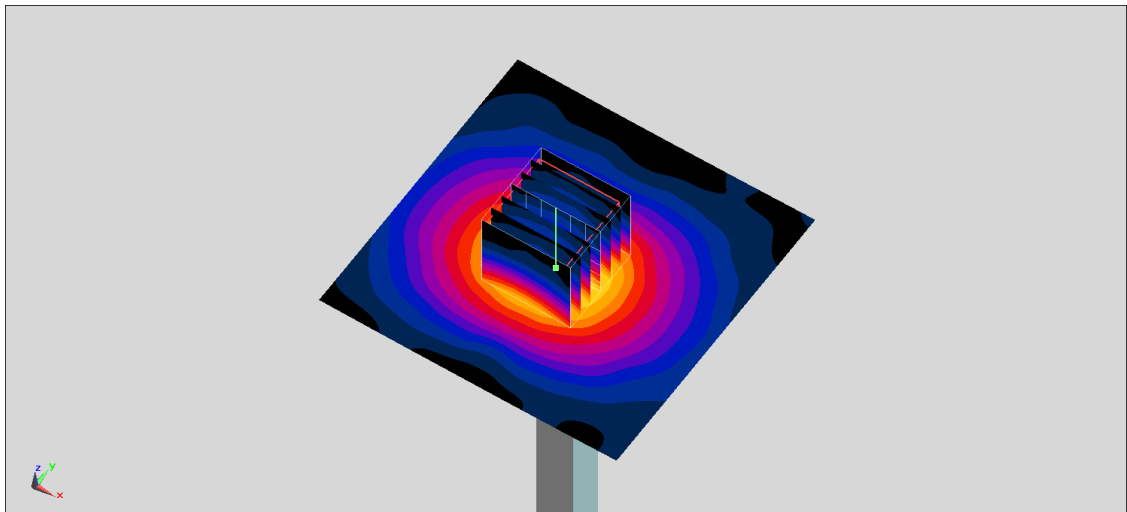
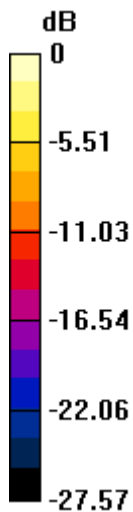
Pin=50mW/Zoom Scan (7x7x7)/Cube 0: Measurement grid: dx=4mm, dy=4mm, dz=1.4mm

Reference Value = 45.86 V/m; Power Drift = 0.17 dB

Peak SAR (extrapolated) = 16.5 W/kg

SAR(1 g) = 3.87 W/kg; SAR(10 g) = 1.12 W/kg

Maximum value of SAR (measured) = 9.86 W/kg



0 dB = 9.81 W/kg = 9.92 dBW/kg

System Check_Head_6500MHz

Communication System: Validation band; Frequency: 6500.0

Medium: HSL_6G_211221 Medium parameters used: $f = 6500.0$ MHz; $\sigma = 6.19$ S/m; $\epsilon_r = 34.3$

Ambient Temperature: 23.5°C; Liquid Temperature: 22.5°C

DASY6 Configuration:

- Probe: EX3DV4 - SN3976; ConvF(5.75, 5.75, 5.75); Calibrated: 2021-01-27
- Sensor-Surface: 1.4 mm
- Electronics: DAE4 Sn778; Calibrated: 2021-05-21
- Phantom: ELI V5.0 (20deg probe tilt); Serial: xxxx; Section: Flat
- Measurement Software: cDASY6 V6.6.0.13926
- UID: CW, 0--
- MAIA: Area Scan: N/A; Zoom Scan: N/A

Area Scan (51.0 mm x 51.0 mm): Measurement Grid: 8.5 mm x 8.5 mm

SAR (1g) = 22.9 W/kg; SAR (10g) = 4.64 W/kg;

Zoom Scan (23.8 mm x 23.8 mm x 22.0 mm): Measurement Grid: 3.4 mm x 3.4 mm x 1.4 mm

Power Drift = 0.02 dB

SAR (1g) = 28.7 W/kg; SAR (10g) = 5.24 W/kg;

