

Lenovo Qreator 27 User Guide

Lenovo

Product numbers

A20270DL0

66B7-RCC1-WW

66B7-RBC1-WW

66B7-RAC1-WW

First Edition (July 2020)

© Copyright Lenovo 2020.

LENOVO products, data, computer software, and services have been developed exclusively at private expense and are sold to governmental entities as commercial items as defined by 48 C.F.R. 2.101 with limited and restricted rights to use, reproduction and disclosure.

LIMITED AND RESTRICTED RIGHTS NOTICE: If products, data, computer software, or services are delivered pursuant a General Services Administration "GSA" contract, use, reproduction, or disclosure is subject to restrictions set forth in Contract No. GS-35F-05925.

Contents

Safety information	iv
General Safety guidelines	iv
Chapter 1. Getting started	1-1
Shipping contents	1-1
Notice for use	1-2
Product overview	1-2
Setting up your monitor	1-4
Chapter 2. Adjusting and using your monitor	2-1
Comfort and accessibility	2-1
Arranging your work area	2-1
Positioning and viewing your monitor	2-1
Quick tips for healthy work habits	2-2
Adjusting your monitor image	2-3
Selecting a supported display mode	2-17
Understanding power management	2-18
Caring for your monitor	2-19
Detaching the monitor base and stand	2-19
Wall Mounting (Optional)	2-19
Chapter 3. Reference information	3-1
Monitor specifications	3-1
Troubleshooting	3-3
Manually installing the monitor driver	3-5
Appendix A. Service and Support	A-1

Registering your option	A-1
Online technical support.....	A-1
Telephone technical support	A-1
Appendix B. Notices.....	B-1
Recycling information	B-2
Trademarks.....	B-3
Power cords and power adapters	B-3

Safety information

General Safety guidelines

For tips to help you use your computer safely, go to:
<http://www.lenovo.com/safety>

Before installing this product, read the Safety Information.



DANGER

To avoid shock hazard:

- Do not remove the covers.
- Do not operate this product unless the stand is attached.
- Do not connect or disconnect this product during an electrical storm.
- The power cord plug must be connected to a properly wired and grounded power outlet.
- Any equipment to which this product will be attached must also be connected to properly wired and grounded power outlets.
- To isolate the monitor from the electrical supply, you must remove the plug from the power outlet. The power outlet should be easily accessible.

To take special precautions to avoid the introduction of hazards when operating, installing, servicing, transporting or storing equipment, the necessary instructions shall be made available.

To reduce the risk of electric shock, do not perform any servicing other than that contained in the operating instructions unless you are qualified to do so.

Handling:

- If your monitor weighs more than 18 kg (39.68 lb), it is recommended that it be moved or lifted by two people.

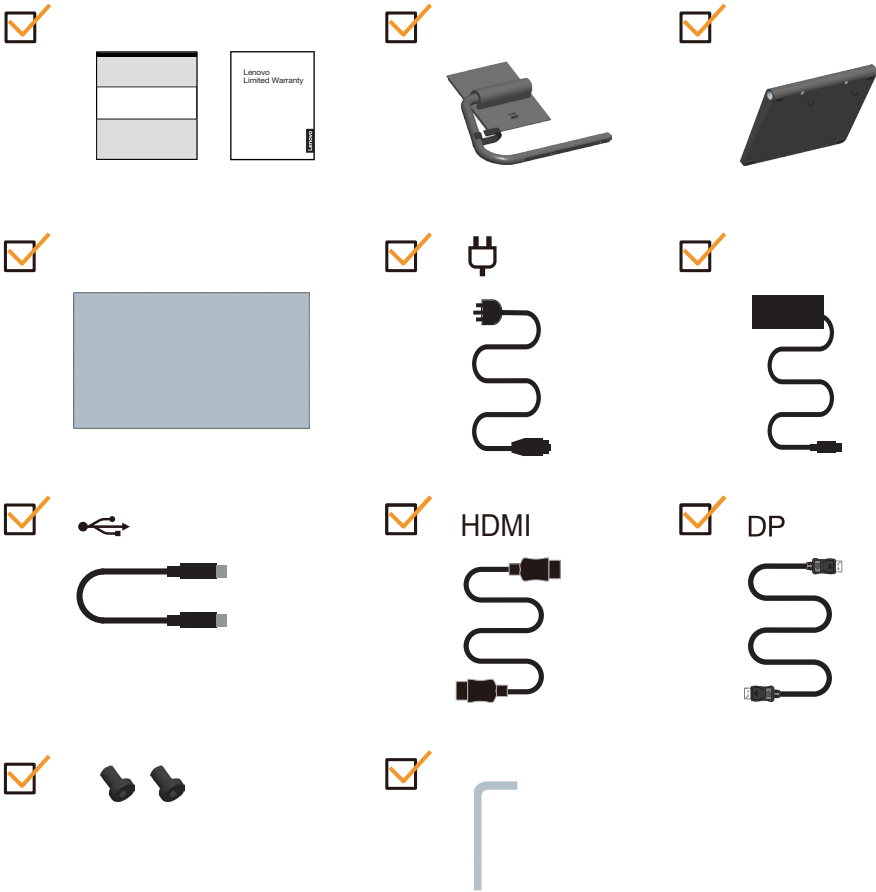
Chapter 1. Getting started

This User's Guide provides detailed operation instructions for the user. For quick instruction overview, please see the Setup Poster for brief information.

Shipping contents

The product package should include the following items:

- Information Flyer
- Lenovo Limited Warranty Booklet
- Stand
- Base
- Flat Panel Monitor
- Power Cord
- Adapter
- USB Type C Cable
- HDMI Cable
- DisplayPort Cable
- Screw x 2pcs
- Screwdriver



Notice for use

To set up your monitor, please see the illustrations below.

Note: Do not touch the monitor within the screen area. The screen area is glass and can be damaged by rough handling or excessive pressure.



1. Place your monitor with the screen face down on a soft flat surface.

2. Insert the base towards the stand until it locks in place.

3. Align the stand assembly bracket to the monitor.

Note: To install a VESA mount, please see "Wall Mounting (Optional)" on page 2-19.

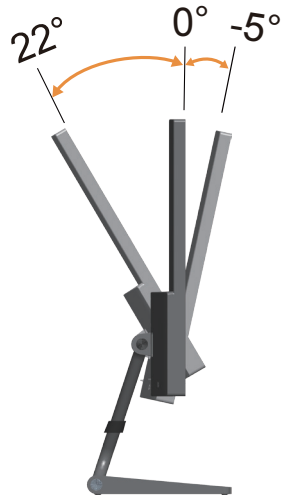
Product overview

This section will provide information on adjusting monitor positions, setting user controls, and using the cable lock slot.

Types of adjustments

Tilt

Please see the illustration below for an example of the tilt range.



Monitor controls

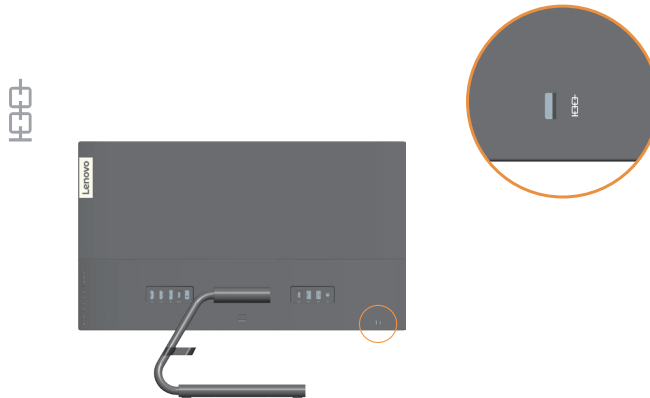
The keypad controls on the panel frame are accesses to various functions.



For information on how to utilize these keypad controls, please see “Adjusting your monitor image” on page 2-3.

Cable lock slot

Your monitor is equipped with a cable lock slot located on the rear of your monitor



Setting up your monitor

This section provides information on how to set up your monitor.

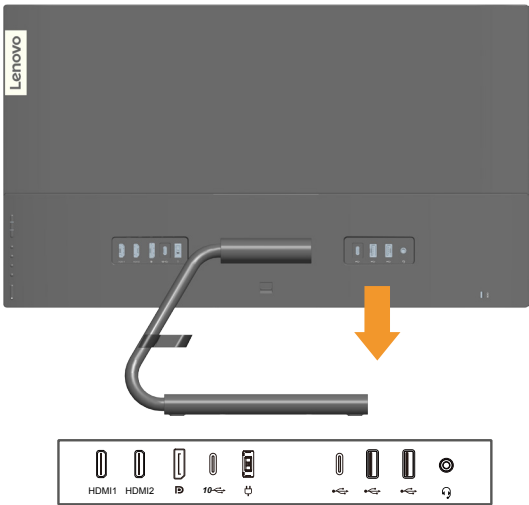
Connecting and turning on your monitor

Note: Be sure to read the Safety information on page iv before carrying out this procedure.

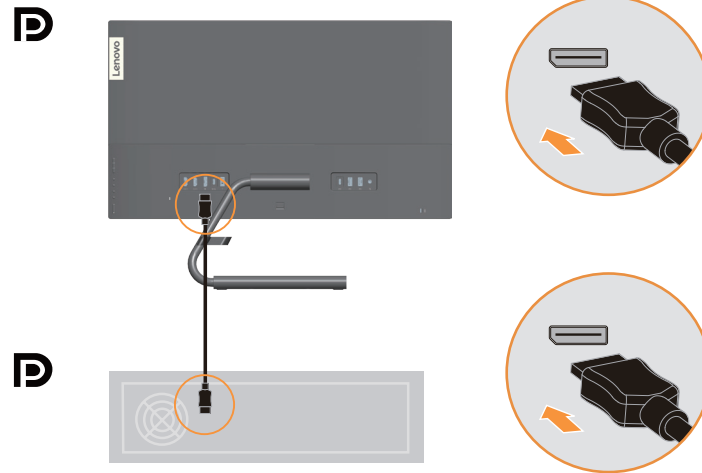
1. Power off your computer and all attached devices, and unplug the computer power cord.



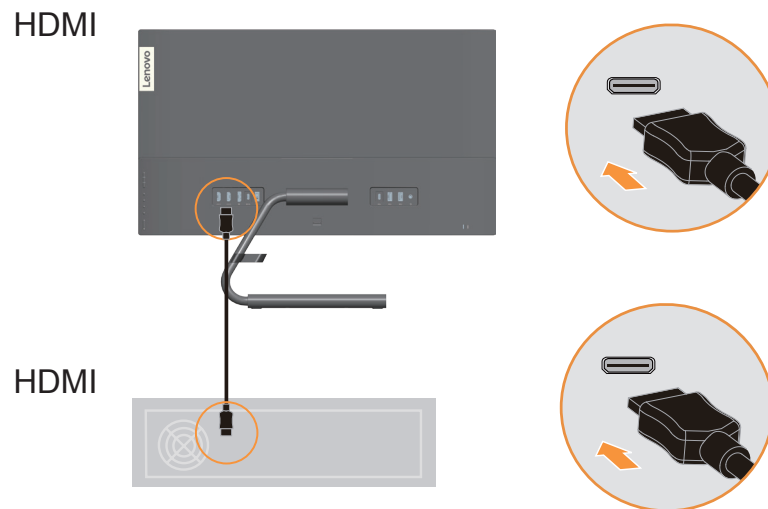
2. Connect the cables according to below icon indication.



-
3. For computer in DP connecting.

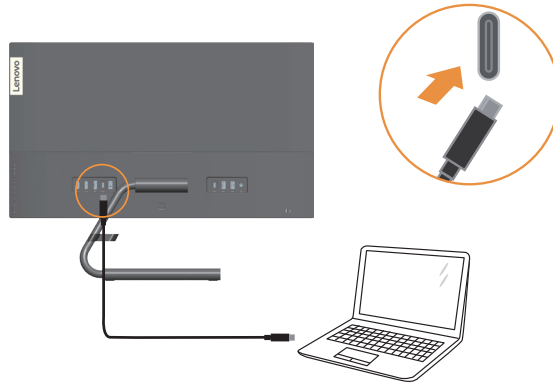


4. For computer in HDMI connecting.
Note: For other regions Lenovo recommends that customers who require to use the HDMI input on their monitor purchase the "Lenovo HDMI to HDMI cable OB47070"
<http://www.lenovo.com/support/monitoraccessories>



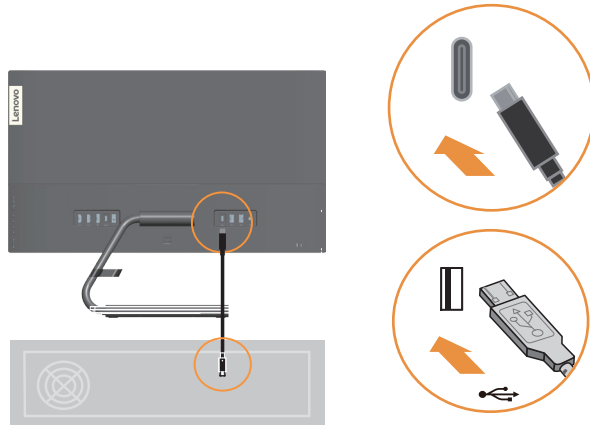
5. For computer in USB type C-C connecting.

10 ⇄ *

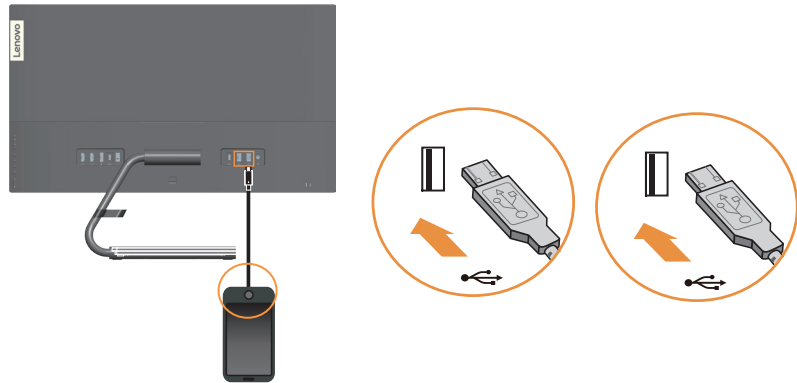


6. For computer in USB type C-A connecting.

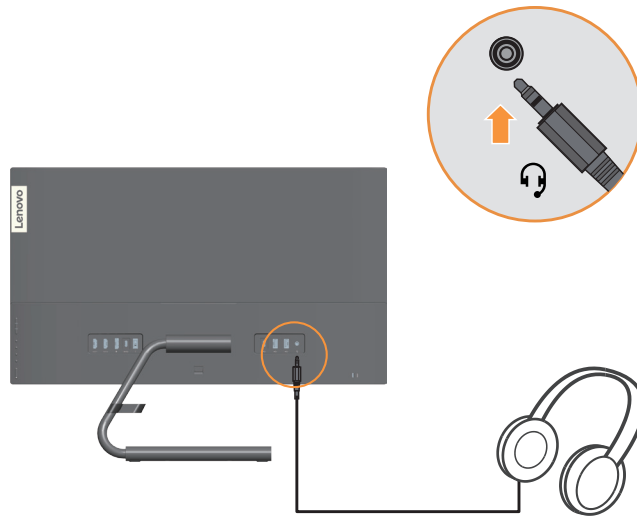
⇄ *



-
7. Connect one end of the USB cable to the USB downstream terminal of the monitor, and connect the other end of the USB cable to an appropriate USB port on your device.
Note: The USB downstream port does not provide power while the monitor switch is off.

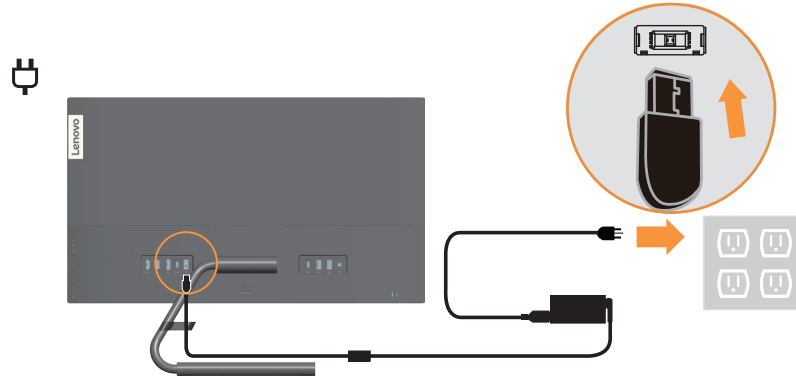


8. Connect the speaker's audio cable and audio jack of monitor to transfer audio source from HDMI/DP/Type C.
Note: The audio output in HDMI/DP/Type C modes.



-
9. Insert the adapter into the monitor, then plug the monitor power cord and the computer cord into grounded electrical outlets.

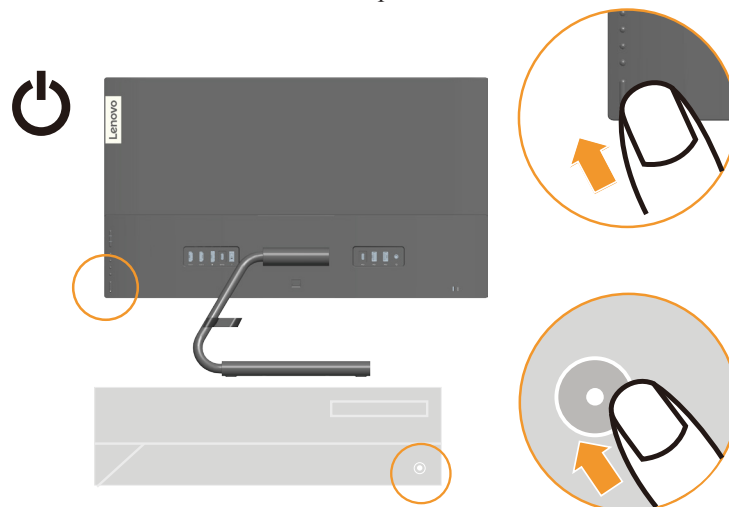
Note: A certified power supply cord has to be used with this equipment. The relevant national installation and or equipment regulations shall be considered. A certified power supply cord not lighter than ordinary polyvinyl chloride flexible cord according to IEC 60227 (designation H05VV-F 3G 0.75mm² or H05VVH2-F2 3G 0.75mm²) shall be used. Alternative a flexible cord be of synthetic rubber according to IEC 60245 (designation H05RR-F 3G 0.75mm²) shall be used.



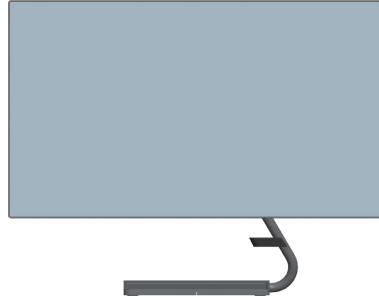
10. Connect the cables with cable clip.



11. Power on the monitor and the computer.



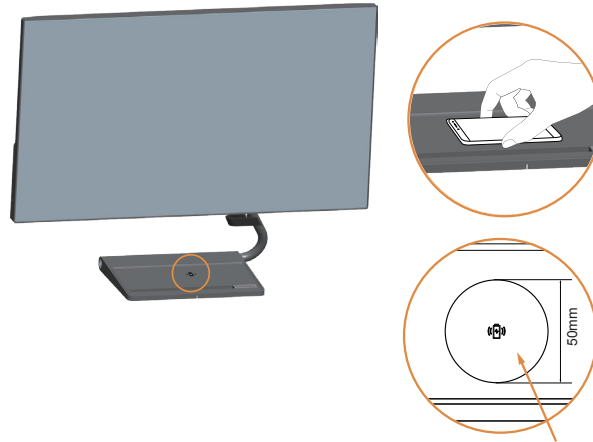
-
12. When you install the monitor driver, download the driver that corresponds to your monitor model from the Lenovo website http://support.lenovo.com/docs/Qreator_27. Refer to the ““Manually installing the monitor driver” on page 3-5” section to install the driver.



Wireless Charging

The base of monitor includes a wireless charging module which supports Qi inductive technology(Support fast charging up to 15W).This wireless module can be used to charge a mobile phone or tablet which also support Qi inductive technology.

For better charging performance, please remove the case of the smart phone or tablet firstly. Place the device face up in the center of the base, the device is charged correctly when the LED in the base is found with green color.



Wireless charging area

The LED in the base provide indicators about the charging status:

Device Status	LED Indication
Power on	The green and white lights go on for three seconds at the same time
Unplug	Off
Charging	White light long on
Fully charged	Green light for a long
FOD	White light flashes (2 times per second)

Note:

- It takes around 2 seconds for charging transmitter and receiver to do communications, please don't remove the device during the communication process.
- Don't place the devices with metal back cover on the base for charging.
- Don't place any metal products on the base.
- Don't place any magnetic cards on the base.

Chapter 2. Adjusting and using your monitor

This section will give you information on adjusting and using your monitor.

Comfort and accessibility

Good ergonomic practice is important to get the most from your personal computer and to avoid discomfort. Arrange your workplace and the equipment you use to suit your individual needs and the kind of work that you perform. In addition, use healthy work habits to maximize your performance and comfort while using your computer.

Arranging your work area

Use a work surface of appropriate height and available working area to allow you to work in comfort.

Organize your work area to match the way you use materials and equipment. Keep your work area clean and clear for the materials that you typically use and place the items that you use most frequently, such as the computer mouse or telephone, within the easiest reach. Equipment layout and setup play a large role in your working posture. The following topics describe how to optimize equipment setup to achieve and maintain good working posture.

Positioning and viewing your monitor

Position and adjust your computer monitor for comfortable viewing by considering the following items:

- **Viewing distance:** Recommended viewing distance between the eye and the monitor screen is 1.5 x the diagonal of the screen. Solutions in meeting this required distance in cramped office situations include pulling desk away from wall or divider to make room for monitor, using flat panel or compact displays placing the monitor in the desk corner, or placing the keyboard in an adjustable drawer to create a deeper working surface.
- **Monitor height:** Position the monitor so your head and neck are in a comfortable and neutral (vertical, or upright) position. If your monitor does not have height adjustments, you might have to place books or other sturdy objects under the base of the monitor to achieve the desired height. A general guideline is to position the monitor such that the top of the screen is at or slightly below your eye-height when you are comfortably seated. However, be sure to optimize your monitor height so the line of site between your eyes and the center the monitor suits your preferences for visual distance and comfortable viewing when your eye muscles are in a relaxed state.
- **Tilt:** Adjust the tilt of your monitor to optimize the appearance of the screen content and to accommodate your preferred head and neck posture.
- **General location:** Position your monitor to avoid glare or reflections on the screen from overhead lighting or nearby windows.

The following are some other tips for comfortable viewing of your monitor:

- Use adequate lighting for the type of work you are performing.
- Use the monitor brightness, contrast, and image adjustment controls, if equipped, to optimize the image on your screen to meet your visual preferences.
- Keep your monitor screen clean so you can focus on the screen's contents.

Any concentrated and sustained visual activity can be tiring for your eyes. Be sure to periodically look away from your monitor screen and focus on a far object to allow your eye muscles to relax. If you have questions on eye fatigue or visual discomfort, consult a vision care specialist for advice.

Quick tips for healthy work habits

The following information is a summary of some important factors to consider to help you remain comfortable and productive while you use your computer.












- **Good posture starts with equipment setup:** The layout of your work area and the setup of your computer equipment have a large effect on your posture while using your computer. Be sure to optimize the position and orientation of your equipment by following the tips outlined in “Arranging your work area ” on page 2-1 so you can maintain a comfortable and productive posture. Also, be sure to use the adjustment capabilities of your computer components and office furniture to best suit your preferences now and as your preferences change over time.
- **Minor changes in posture can help avoid discomfort:** The longer you sit and work in front of your computer, the more important it is to observe your working posture. Avoid assuming any one posture for an extended period of time. Periodically make minor modifications in your posture to help deter any discomforts that might arise. Make use of any adjustments that your office furniture or equipment provide to accommodate changes in posture
- **Short, periodic breaks help ensure healthy computing:** Because computing is primarily a static activity, it is particularly important to take short breaks from your work. Periodically, stand up in front of your work area, stretch, walk for a drink of water, or otherwise take a short break from using your computer. A short break from work gives your body a welcome change in posture and helps to ensure you remain comfortable and productive while you do work.

Adjusting your monitor image

This section describes the user control features used to adjust your monitor image.

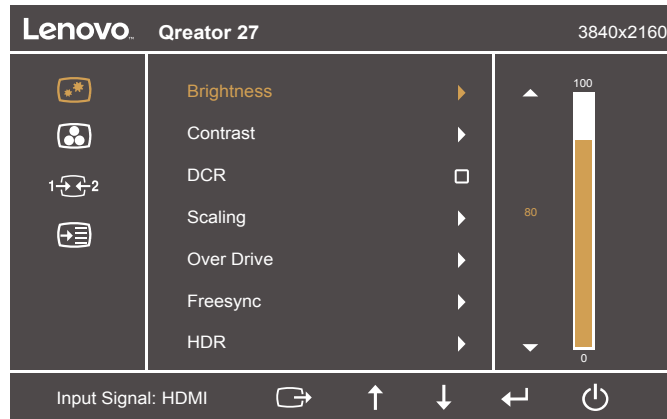
Using the direct access controls

The direct access controls can be used when the On Screen Display (OSD) is not displayed.

	Icon	Control	Description
1		Volume Up	Press to control Speaker Volume up.
		Speaker mute control	Turn on/off the speaker.
		Volume Down	Press to control Speaker Volume down.
2		Input Source	Switches the video input source Shift back to previous level when in OSD mode.
		DDC-CI	Press and hold for 10 seconds to enable or disable the DDC-CI function.
		Exit	Exit and return to previous level.
3		Display Modes	Screen prioritization
		Increase/Up	Up browsing key For increasing the value on adjustment bar/tune in Press to move to previous item.
5		Brightness	Direct access to Brightness adjustment.
		Decrease/Down	Down browsing key. For decreasing the value on adjustment bar/tune in. Press to move to next item.
6		Menu	To access OSD menu. Press to confirm selection. Press and hold for 10 seconds will lock menu/unlock menu.
		Enter	Press to enter next level on main menu/sub menu status or enter previous level on adjustment bar.

Using the On-Screen Display(OSD) controls

To adjust the settings, the user controls can be viewed through the OSD.



To use the controls:

1. Press **↵** to open the main OSD menu.
2. Use **↑** or **↓** to move among the icons. Select an icon and press **↵** to access that function. If there is a sub-menu, you can move between options using **↑** or **↓**, then press **↵** to select that function. Use **↑** or **↓** to make adjustments then press **↵** to save.
3. Press **⏪** to move backwards through the sub-menus and exit from the OSD.
4. Press and hold **↵** for 10 seconds to lock the OSD. This will prevent accidental adjustments to the OSD. Press and hold **↵** for 10 seconds to unlock the OSD and allow adjustments to the OSD.
5. Enables DDC/CI by default. Use OSD Exit Key, press and hold **⏪** for 10 seconds to disable / enable DDC/CI function. A message "DDC/CI disable" is shown on the screen.
6. The ENERGY STAR option resets all user settings to default values so that the monitor can meet the requirements of Energy Star.







Energy Star is an energy saving program for consumer electronics led by the U.S. government. It was launched in 1992 by EPA and DOE to reduce energy consumption and greenhouse gas emissions. Energy Star logo is a symbol of energy conservation and environmental protection. It improves the concept of energy efficiency of consumers and manufacturers, and effectively guides the market.

The regulation of Energy Star improves energy efficiency and reduces air pollution by using more energy-efficient equipment in homes, offices and factories. One way to achieve this goal is to use management to reduce energy consumption when products are not in use. The default settings for monitors conform to Energy Star certification. Any changes by users for more features and functionalities may increase power consumption, which will exceed the limitation of Energy Star's standard. If the user changes the options related to energy efficiency when using, such as brightness, color mode, etc., select All Reset Factory or choose the Energy Star option, the power consumption will be restored to the energy efficiency with Energy Star standard.

For more information, please refer to (www.energystar.gov/products). All products of Energy Star will be posted online and can be accessed directly by governments, public institutions and consumers.

Table 2-1. OSD functions

OSD Icon on Main Menu	Sub menu	Description	Controls and Adjustments
	Brightness	Adjusts overall screen brightness.	All input ports
	Contrast	Adjusts difference between light and dark areas.	
	DCR	Enable dynamic contrast ratio. • Off • On	
	Scaling	Selects type of scaled image. • Original AR: same aspect ratio with input signal. • Full Screen: expand image to full screen.	
	Over Drive	Respond time enhancement • Off • Level 1 • Level 2 • Level 3 • Level 4	
	Freesync	• Auto • Off	
	HDR	• HDR Photo • HDR Movie • HDR Game • HDR 400 • HDR off	
	Color	Adjusts intensity of red, green, and blue. • Reddish • Neutral • Bluish • Srgb • DCI-P3 D63 • BT.709 • Custom Red: Increases or decreases the saturation of 'red' in the image. Green: Increases or decreases the saturation of 'green' in the image. Blue: Increases or decreases the saturation of 'blue' in the image.	
	Display Modes	• Panel Native • Image Creation • Digital Cinema • Video Creation • Low Blue Light	
	Input signal	This monitor can accept video signals through multiple different connectors. Most desktop computers use a analog connector. Select digital among OSD Controls when you use HDMI / DP / USB-C connector. • Auto Switch Input • USB-C • DP • HDMI 1 • HDMI 2	

OSD Icon on Main Menu	Sub menu	Description	Controls and Adjustments
	Information	Shows Model name, Refresh, and product details. This screen does not allow any changes to the settings.	All input ports
	Language	Changes languages of menu. The language chosen only affects the language of the OSD. It has no effect on any software running on the computer.	
	Menu Position	Adjusts menu location. Default Default returns the menu position to the default settings. Custom • Horizontal: Changes the horizontal position of the OSD. • Vertical: Changes the vertical position of the OSD. Save • Save the custom position choices..	
	OSD time out	Set the duration of time that the OSD will remain active when no operation is performed(☺).	
	Transparency	Choose the transparency of OSD(0~100).	
	DP Select	• DP 1.4 • DP 1.2	
	USB Select	• USB 2.0(4K 60Hz) • USB 3.0(4K 30Hz)	
	Energy Saving Mode	• Off • On	
	Smart Power	• Off • On	
	Super USB-C Charging	• Off • On	
	Refresh Rate Num	• Off • On	
	Reset All Settings	• Cancel • Factory Reset Reset monitor to the original settings.	

*The use of Extreme Mode (response time) may result in reduced display quality when fast moving video graphics are displayed.

Users should check Extreme Mode (response time) to verify if it is compatible with any applications they would like to use it with.

*Low Blue Light Mode is reducing the blue light content.

Selecting a supported display mode

The display mode the monitor uses is controlled by the computer. Therefore, refer to your computer documentation for details on how to change display modes.

The image size, position and shape might change when the display mode changes.

Unlike CRT monitors, which require a high refresh rate to minimize flicker, LCD or Flat Panel technology is inherently flicker-free.

Note: If your system has previously been used with a CRT monitor and is currently configured to a display mode outside the range of this monitor, you may need to re-attach the CRT monitor temporarily until you have re-configured the system; preferably to 3840x2160 at 60Hz, which is the Native Resolution Display mode.

Response time: 6ms with overdrive @60Hz

Table 2-2. Factory set display modes

Timing	Refresh rate(Hz)
640x480	60 Hz
720x400	70 Hz
800x600	60 Hz
1024x768	60 Hz
1280x1024	60 Hz
1366x768	60 Hz
1440x900	60 Hz
1440x900	60 Hz (Reduced blanking)
1600x900	60 Hz
1680x1050	60 Hz (Reduced blanking)
1680x1050	60 Hz
1920x1080	60 Hz
2560x1440	60 Hz
3840x2160	60 Hz

Understanding power management

Power management is invoked when the computer recognizes that you have not using your mouse or keyboard for a user-definable period. There are several states as described in the table below.

For optimal performance, switch off your monitor at the end of each working day, or whenever you expect to leave it unused for long periods during the day.

Table 2-3. Power indicator

State	Power Indicator	Screen	Restoring Operation	Compliance
On	White	Normal		
Standby/Suspend	Amber	Blank	Press a key or move the mouse. There may be a slight delay reappears. Note: Standby also occurs if there is no image output to the monitor.	ENERGY STAR
Off	Off	Blank	Press power key to switch on. There may be a slight delay before the image reappears.	ENERGY STAR

Power Management Modes

VESA Modes	Horizontal Sync	Vertical Sync	Video	Power Indicator	Power Consumption
Normal operation	Active	Active	Active	White	45 W (maximum)* 35 W (typical)
Active-off mode	Inactive	Inactive	Off	Amber	Less than 0.5 W
Switch off	-	-	-	Off	Less than 0.3 W

Energy Star	Power Consumption
P_{ON}	19.23W
E_{TEC}	60.27kWh

** Maximum power consumption with max luminance.

This document is informational only and reflects laboratory performance. Your product may perform differently, depending on the software, components and peripherals you ordered and shall have no obligation to update such information. Accordingly, the customer should not rely upon this information in making decisions about electrical tolerances or otherwise. No warranty as to accuracy or completeness is expressed or implied.

Caring for your monitor

Be sure to turn off the power before you perform any maintenance on the monitor.

Do not:

- Apply water or liquid directly to your monitor.
- Use solvents or abrasives.
- Use flammable cleaning materials to clean your monitor or any other electrical equipment.
- Touch the screen area of your monitor with sharp or abrasive items. This type of contact may cause permanent damage to your screen.
- Use any cleaner which contains an anti-static solution or similar additives. This may harm the coating of the screen area.

Do:

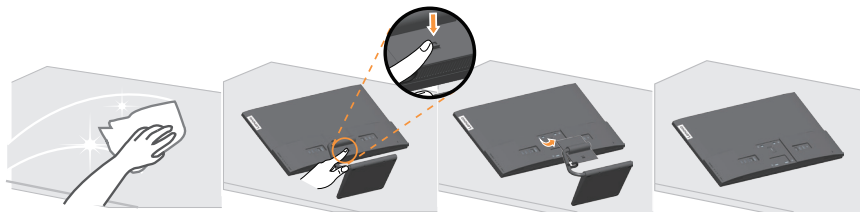
- Lightly dampen a soft cloth with water and use this to gently wipe the covers and the screen.
- Remove grease or finger marks with a damp cloth and a little mild detergent.

Detaching the monitor base and stand

Step 1: Place the monitor on a soft and flat surface.

Step 2: Press and hold the stand release button.

Step 3: Lift the stand up and away from the monitor.



Wall Mounting (Optional)

Refer to the instructions that come with the base mounting kit. To convert your LCD display from a desk-mounted to a wall-mounted display, do the following:

Step 1: Verify that the Power button is turned Off, then disconnect the power cord.=

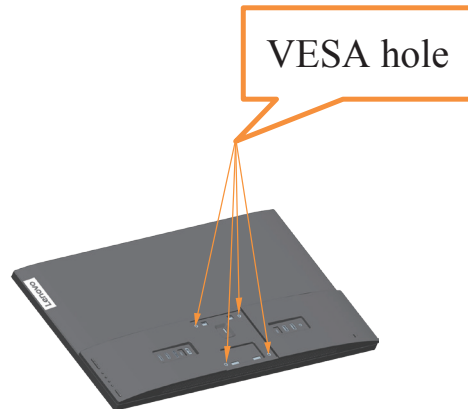
Step 2: Lay the LCD display face down on a towel or blanket.



Step 3: Remove the base and stand from the monitor, refer to "Detaching the monitor base and stand" on page 2-19.



Step 4: Attach the mounting bracket from the VESA compatible wall mounting kit. (100mm x100mm distance), the type of VESA mounting screw is M4 x 10 mm.



Step 5: Attach the LCD display to the wall, and follow the instructions in the wall-mounting kit. For use only with UL Listed Wall Mount Bracket with minimum weight/load: 8kg

Note:

When you use a flexible arm, do not tilt the monitor downward by more than 5 degrees.

Chapter 3.Reference information

This section contains monitor specifications, instructions to manually install the monitor driver, troubleshooting information.

Monitor specifications

Table 3-1. Monitor specifications for type-model Qreator 27

Dimensions	Depth	182.0 mm (7.17 in.)
	Height	476.35mm (18.75 in.)
	Width	608.60 mm (23.96 in.)
Stand	Tilt	Range: -5°~22°
VESA mount	Supported	100 mm x 100 mm (3.94 in. x 3.94 in.)
Image	Viewable image size	684.66 mm (27 in.)
	Maximum height	335.664 mm (13.21 in.)
	Maximum width	596.736 mm (23.49 in.)
	Pixel pitch	0.1554mm (V)
Power input	Supply voltage	100-240V AC
	Max supply current	1.5A
Power consumption Note: Power consumption figures are for the monitor and the power supply combined. Note: Typical power consumption is tested under OSD default setting.	Normal operation	<XX W (Max) <XX W (Typical)
	Wireless Charging	<15W (Max)
	Standby/Suspend	<XX W
	Off Note: without USB/ Webcam/external speaker	<XX W at 100VAC and 240VAC
DP	Interface	DP
	Horizontal addressability	3840 pixels (max)
	Vertical addressability	2160 lines (max)
	Clock frequency	600 MHz (max)
HDMI	Interface	HDMI
	Input signal	VESA TMDS (Panel Link™)
	Horizontal addressability	3840 pixels (max)
	Vertical addressability	2160 lines (max)
	Clock frequency	600 MHz (max)
Communications	VESA DDC/CI	

Supported Display Modes	Horizontal frequency	29 kHz – 160 kHz 120kHz – 130kHz(Wireless Charging)
	Vertical frequency	50 Hz – 60 Hz
	Native Resolution	3840 x 2160 at 60 Hz
Temperature	Operating	0° to 40°C (32°F to 104° F)
	Storage	-20° to 60°C (-4°F to 140° F)
	Shipping	-20° to 60°C (-4° F to 140° F)
Humidity	Operating	10% to 80% non-condensing
	Storage	5% to 95% non-condensing
	Shipping	5% to 95% non-condensing

Troubleshooting

If you have a problem setting up or using your monitor, you might be able to solve it yourself. Before calling your dealer or Lenovo, try the suggested actions that are appropriate to your problem.

Table 3-2. Troubleshooting

Problem	Possible cause	Suggested action	Reference
The words "Out of Range" are shown on the screen, and the power indicator is flashing white.	The system is set to a display mode which is not supported by the monitor	<ul style="list-style-type: none"> • If you are replacing an old monitor, reconnect it and adjust the display mode to within the specified range for your new monitor. • If using a Windows system, restart the system in safe mode, then select a supported display mode for your computer. • If these options do not work, contact the Customer Support Centre. 	"Selecting a supported display mode" on page 2-17
The image quality is unacceptable	The video signal cable is not connected with the monitor or system completely.	Be sure the signal cable is firmly plugged into the system and monitor.	"Connecting and turning on your monitor" on page 1-4
	The color settings may be incorrect.	Select another color setting from the OSD menu.	"Adjusting your monitor image" on page 2-3
	The automatic image setup function was not performed.	Perform automatic image setup.	"Adjusting your monitor image" on page 2-3
The power indicator is not lit and there is no image.	<ul style="list-style-type: none"> • The monitor's power switch is not switched on. • The power cord is loose or disconnected. • There is no power at the outlet. 	<ul style="list-style-type: none"> • Be sure the power cord is connected properly. • Be sure the outlet has power. • Power on the monitor. • Try using another power cord. • Try using another electrical outlet. 	"Connecting and turning on your monitor" on page 1-4
Screen is blank and power indicator is amber.	The monitor is in Standby / Suspend mode	<ul style="list-style-type: none"> • Press any key on the keyboard or move the mouse to restore operation. • Check the Power options settings on your computer. 	"Understanding power management" on page 2-18
The power indicator is amber, but there is no image	The video signal cable is loose or disconnected from the system or monitor	Be sure the video cable is connected with the system properly	"Connecting and turning on your monitor" on page 1-4
	The monitor brightness and contrast are at the lowest setting.	Adjust the brightness and contrast setting on the OSD menu.	"Adjusting your monitor image" on page 2-3

Problem	Possible cause	Suggested action	Reference
One or more of the pixels appear discolored	This is a characteristic of the LCD technology and is not an LCD defect	If there are more than five pixels missing, contact the Support Center	"Appendix A, Service and Support" on page A-1
<ul style="list-style-type: none"> • Fuzzy lines in text or a blurry image • Horizontal or vertical lines through the image. 	<ul style="list-style-type: none"> • Image setup has not been optimized • Your system Display Properties setting have not been optimized. 	Adjust the resolution settings on your system to match the native resolution for this monitor: 3840 x 2160 at 60 Hz.	"Adjusting your monitor image" on page 2-3
		Perform automatic image setup. If automatic image setup does not help, perform manual image setup.	"Selecting a supported display mode" on page 2-17
		When working in the native resolution, you may find additional improvements by adjusting the Dots Per Inch (DPI) setting on your system.	See the Advanced section of your system's display properties.

Manually installing the monitor driver

Below are steps for manually installing the monitor driver in Microsoft Windows 7, Microsoft Windows 10.

Installing the monitor driver in Windows 7

To use the Plug and Play feature in Microsoft Windows 7, do the following:

1. Turn off the computer, all attached devices.
2. Ensure that the monitor is connected correctly.
3. Turn on the monitor and then the system unit. Allow your computer to start the Windows 7 operating system.
4. From the Lenovo website http://support.lenovo.com/docs/Qreator_27, find the corresponding monitor driver and download it to a PC to which this monitor is connected (such as a desktop).
5. Open the Display Properties window by clicking Start, Control Panel, Hardware and Sound icon, and then click the Display icon.
6. Click the Change the display settings tab.
7. Click the Advanced Settings icon.
8. Click the Monitor tab.
9. Click the Properties button.
10. Click the Driver tab.
11. Click Update Driver, then click Browse the computer to find the driver program.
12. Select Pick from the list of device driver program on the computer.
13. Click the Hard Disk button. By clicking the Browse button, browse and point to the following path:
X:\Monitor Drivers\Windows 7
(where X indicates “the folder in which the downloaded driver is located”(such as a desktop)).
14. Select the “lenqreator 27.inf” file and click the Open button. Click the OK button.
15. In the new window, select LEN Qreator 27 and click Next.
16. After the installation is complete, delete all downloaded files and close all windows.
17. Restart the system. The system will automatically select the maximum refresh rate and corresponding Color Matching Profiles.

Installing the monitor driver in Windows 10

To use the Plug and Play feature in Microsoft Windows 10, do the following:

1. Turn off the computer, all attached devices.
2. Ensure that the monitor is connected correctly.
3. Turn on the monitor and then the system unit. Allow your computer to start the Windows 10 operating system.
4. From the Lenovo website http://support.lenovo.com/docs/Qreator_27, find the corresponding monitor driver and download it to a PC to which this monitor is connected (such as a desktop).
5. On the Desktop, move mouse to bottom-left corner of screen, right-click choose Control Panel, then double click the icon of Hardware and Sound, and then click Display.
6. Click the Change the display settings tab.
7. Click the Advanced Settings icon.
8. Click the Monitor tab.
9. Click the Properties button.
10. Click the Driver tab.
11. Click Update Driver, then click Browse the computer to find the driver program.
12. Select Pick from the list of device driver program on the computer.
13. Click the Hard Disk button. By clicking the Browse button, browse and point to the following path:
X:\Monitor Drivers\Windows 10
(where X indicates “the folder in which the downloaded driver is located” (such as a desktop)).
14. Select the “lenqreator 27.inf” file and click the Open button. Click the OK button.
15. In the new window, select LEN Qreator 27 and click Next.
16. After the installation is complete, delete all downloaded files and close all windows.
17. Restart the system. The system will automatically select the maximum refresh rate and corresponding Color Matching Profiles.

Note: On LCD monitors, unlike CRTs, a faster refresh rate does not improve display quality. Lenovo recommends using either 3840 x 2160 at a refresh rate of 60 Hz, or 640 x 480 at a refresh rate of 60 Hz.

Getting further help

If you still can't solve your problem, please contact the Lenovo Support Center. For more information on contacting the Support Center, please see Appendix A. “Service and Support” on page A-1.

Appendix A. Service and Support

The following information describes the technical support that is available for your product, during the warranty period or throughout the life of the product. Refer to your Lenovo Statement of Limited Warranty for a fully explanation of Lenovo warranty terms.

Registering your option

Register to receive product service and support updates, as well as free and discounted computer Accessories and content. Go to: <http://www.lenovo.com/support>

Online technical support

Online technical support is available during the life of your product through the Lenovo Support Web site at <http://www.lenovo.com/support>

Product replacement assistance or exchange of defective components also is available during the warranty period, assistance for replacement or exchange of defective components is available. In addition, if your option is installed in a Lenovo computer, you might be entitled to service at your location. Your technical support representative can help you determine the best alternative.

Telephone technical support

Installation and configuration support through the Customer Support Center will be available until 90 days after the option has been withdrawn from marketing. After that time, the support is cancelled, or made available for a fee, at Lenovo's discretion. Additional support is also available for a nominal fee.

Before contacting a Lenovo technical support representative, please have the following information available: option name and number, proof of purchase, computer manufacturer, model, serial number and manual, the exact wording of any error message, description of the problem, and the hardware and software configuration information for your system.

Your technical support representative might want to walk you through the problem while you are at your computer during the call.

Telephone numbers are subject to change without notice. The most up-to-date telephone list for Lenovo Support is always available at: <http://www.lenovo.com/support>

Country or Region	Telephone Number
China	400-990-8888
South Africa	800982393
Argentina	0800-444-2722(Spanish)
Australia	1300-557-073
Austria	800295730(German)
Belgium	80076524(French, Dutch)
Bolivia	800-100-764(Spanish)

Appendix B. Notices

Lenovo may not offer the products, services, or features discussed in this document in all countries. Consult your local Lenovo representative for information on the products and services currently available in your area. Any reference to a Lenovo product, program, or service is not intended to state or imply that only that Lenovo product, program, or service may be used. Any functionally equivalent product, program, or service that does not infringe any Lenovo intellectual property right may be used instead. However, it is the user's responsibility to evaluate and verify the operation of any other product, program, or service.

Lenovo may have patents or pending patent applications covering subject matter described in this document. The furnishing of this document does not give you any license to these patents. You can send license inquiries, in writing to:

*Lenovo (United States), Inc.
1009 Think Place - Building One
Morrisville, NC 27560
U.S.A.
Attention: Lenovo Director of Licensing*

LENOVO PROVIDES THIS PUBLICATION "AS IS" WITHOUT WARRANTY OF ANY KIND, EITHER EXPRESS OR IMPLIED, INCLUDING, BUT NOT LIMITED TO THE IMPLIED WARRANTIES OF NON-INFRINGEMENT, MERCHANTABILITY OR FITNESS FOR A PARTICULAR PURPOSE.

Some jurisdictions do not allow disclaimer of express or implied warranties in certain transactions, therefore, this statement may not apply to you.

This information could include technical inaccuracies or typographical errors. Changes are periodically made to the information herein; these changes will be incorporated in new editions of the publication. Lenovo may make improvements and/or changes in the product(s) and/or the program(s) described in this publication at any time without notice.

The products described in this document are not intended for use in implantation or other life support applications where malfunction may result in injury or death to persons. The information contained in this document does not affect or change Lenovo product specifications or warranties. Nothing in this document shall operate as an express or implied license or indemnity under the intellectual property rights of Lenovo or third parties. All information contained in this document was obtained from specific environments and presented as an illustration. The result obtained in other operating environments may vary.

Lenovo may use or distribute any of the information you supply in any way it believe appropriate without incurring any obligation to you.

Any references in this publication to non-Lenovo Web sites are provided for convenience only and do not in any manner serve as an endorsement of those Web sites. The materials at those Web sites are not part of the materials for this Lenovo product, and use of those Web sites is at your own risk.

Any performance data contained herein was determined in a controlled environment. Therefore, the result obtained in other operating environments may vary significantly. Some measurements may have been made on development-level systems and there is no guarantee that these measurements will be the same on generally available systems. Furthermore, some measurements may have been estimated through extrapolation. Actual results may vary. Users of this document should verify the applicable data for their specific environment.

Recycling information

Lenovo encourages owners of information technology (IT) equipment to responsibly recycle their equipment when it is no longer needed. Lenovo offers a variety of programs and services to assist equipment owners in recycling their IT products. For information on recycling Lenovo products, go to:

<http://www.lenovo.com/recycling>

環境配慮に関して

本機器またはモニターの回収リサイクルについて

企業のお客様が、本機器が使用済みとなり廃棄される場合は、資源有効利用促進法の規定により、産業廃棄物として、地域を管轄する県知事あるいは、政令市長の許可を持った産業廃棄物処理業者に適正処理を委託する必要があります。また、弊社では資源有効利用促進法に基づき使用済みパソコンの回収および再利用・再資源化を行う「PC回収リサイクル・サービス」を提供しています。詳細は、<http://www.ibm.com/jp/pc/service/recycle/pcrecycle/> をご参照ください。

また、同法により、家庭で使用済みとなったパソコンのメーカー等による回収再資源化が2003年10月1日よりスタートしました。詳細は、<http://www.ibm.com/jp/pc/service/recycle/pcrecycle/> をご参照ください。

重金属を含む内部部品の廃棄処理について

本機器のプリント基板等には微量の重金属（鉛など）が使用されています。使用後は適切な処理を行うため、上記「本機器またはモニターの回収リサイクルについて」に従って廃棄してください。

Collecting and recycling a disused Lenovo computer or monitor

If you are a company employee and need to dispose of a Lenovo computer or monitor that is the property of the company, you must do so in accordance with the Law for Promotion of Effective Utilization of Resources. Computers and monitors are categorized as industrial waste and should be properly disposed of by an industrial waste disposal contractor certified by a local government. In accordance with the Law for Promotion of Effective Utilization of Resources, Lenovo Japan provides, through its PC Collecting and Recycling Services, for the collecting, reuse, and recycling of disused computers and monitors. For details, visit the Lenovo Web site at <http://www.lenovo.com/recycling/japan>. Pursuant to the Law for Promotion of Effective Utilization of Resources, the collecting and recycling of home-used computers and monitors by the manufacturer was begun on October 1, 2003. This service is provided free of charge for home-used computers sold after October 1, 2003. For details, visit the Lenovo Web site at <http://www.lenovo.com/recycling/japan>.

Disposing of Lenovo computer components

Some Lenovo computer products sold in Japan may have components that contain heavy metals or other environmental sensitive substances. To properly dispose of disused components, such as a printed circuit board or drive, use the methods described above for collecting and recycling a disused computer or monitor.

Trademarks

The following terms are trademarks of Lenovo in the United States, other countries, or both:

Lenovo
The Lenovo logo
ThinkCentre
ThinkPad
ThinkVision

Microsoft, Windows, and Windows NT are trademarks of the Microsoft group of companies.

Other company, product, or service names may be trademarks or service marks of others.

Power cords and power adapters

Use only the power cords and power adapters supplied by the product manufacturer. Do not use the ac power cord for other devices.

Electronic emission notices

The following information refers to the Lenovo Qreator 27/A20270DL0.

Federal Communications Commission (FCC) Declaration of Conformity

Lenovo Qreator 27/A20270DL0

This equipment has been tested and found to comply with the limits for a Class B digital device, pursuant to Part 15 of the FCC Rules. These limits are designed to provide reasonable protection against harmful interference in a residential installation. This equipment generates, uses, and can radiate radio frequency energy and, if not installed and used in accordance with the instructions, may cause harmful interference to radio communications. However, there is no guarantee that interference will not occur in a particular installation. If this equipment does cause harmful interference to radio or television reception, which can be determined by turning the equipment off and on, the user is encouraged to try to correct the interference by one or more of the following measures:

- Reorient or relocate the receiving antenna.
- Increase the separation between the equipment and receiver.
- Connect the equipment into an outlet on a circuit different from that to which the receiver is connected.
- Consult an authorized dealer or service representative for help.

Lenovo is not responsible for any radio or television interference caused by using other than recommended cables and connectors or by unauthorized changes or modifications to this equipment. Unauthorized changes or modifications could void the user's authority to operate the equipment.

This device complies with Part 15 of the FCC Rules. Operation is subject to the following two conditions:

(1) this device may not cause harmful interference, and (2) this device must accept any interference received, including interference that may cause undesired operation.

Responsible party:

Lenovo (United States) Incorporated
1009 Think Place - Building One
Morrisville, NC 27560
Phone Number: 919-294-5900



Industry Canada Class B emission compliance statement

This Class B digital apparatus complies with Canadian ICES-003.

Avis de conformité à la réglementation d'Industrie Canada

Cet appareil numérique de la classe B est conforme à la norme NMB-003 du Canada.

This device complies with Part 15 of the FCC / ISED's licence-exempt RSSs Rules. Operation is subject to the following two conditions: (1) This device may not cause harmful interference, and (2) this device must accept any interference received, including interference that may cause undesired operation.

Le présent appareil est conforme aux CNR d'ISED applicables aux appareils radio exempts de licence. L'exploitation est autorisée aux deux conditions suivantes : (1) le dispositif ne doit pas produire de brouillage préjudiciable, et (2) ce dispositif doit accepter tout brouillage reçu, y compris un brouillage susceptible de provoquer un fonctionnement indésirable.

FCC/ISED/CE-RED Caution:

Any changes or modifications not expressly approved by the party responsible for compliance could void the user's authority to operate this equipment.

This transmitter must not be co-located or operating in conjunction with any other antenna or transmitter.

Operations in the 5GHz products are restricted to indoor usage only.

Radiation Exposure Statement:

This equipment complies with FCC/ISED/CE-RED radiation exposure limits set forth for an uncontrolled environment.

This equipment should be installed and operated with minimum distance 20cm between the radiator & your body.

Déclaration d'exposition aux radiations:

Cet équipement est conforme aux limites d'exposition aux rayonnements ISED établies pour un environnement non contrôlé. Cet équipement doit être installé et utilisé avec un minimum de 20 cm de distance entre la source de rayonnement et votre corps.

EU-EMC Directive (2014/30/EU) Statement of Compliance



Deutschsprachiger EU Hinweis:

Hinweise

Gemäß der Amtsblätter des BMPT Nm. 61Ú1991 und 6Ú1992 wird der Betreiber darauf aufmerksam gemacht, daß die von ihm mit diesem Gerät zusammengestellte Anlage auch den technischen Bestimmungen dieser Amtsblätter genügen muß.

Aus ergonomischen Gründen wird empfohlen, die Grundfarbe Blau nicht auf dunklem Untergrund zu verwenden (schlechte Erkennbarkeit, Augenbelastung bei zu geringem Zeichenkontrast).

Aus ergonomischen Gründen sollten nur Darstellungen auf dunklem Hintergrund bei Vertikalfrequenzen ab 60 Hz (ohne Zeilensprung) benutzt werden.

Die Konvergenz des Bildes kann sich auf Grund des Magnetfeldes am Ort der Aufstellung aus der Korrekten Grundeinstellung verändern. Zur Korrektur empfiehlt es sich deshalb, die Regler an der Frontseite für H STAT und V STAT so einzustellen, daß die getrennt sichtbaren Farblinien für Rot, Grün und Blau bei z.B. der Darstellung eines Buchstabens zur Deckung (Konvergenz) gelangen. Siehe hierzu auch die Erklärungen zu H STAT und V STAT.

Hinweis für Geräte der Klasse B EU-Richtlinie zur Elektromagnetischen Verträglichkeit

Dieses Produkt entspricht den Schutzanforderungen der EU-Richtlinie 2014/30/EU zur

Angleichung der Rechtsvorschriften über die elektromagnetische Verträglichkeit in den EU-Mitgliedsstaaten und hält die Grenzwerte der Klasse B der Norm gemäß Richtlinie.

Um dieses sicherzustellen, sind die Geräte wie in den Handbüchern beschrieben zu installieren und zu betreiben. Des Weiteren dürfen auch nur von der Lenovo empfohlene Kabel angeschlossen werden. Lenovo übernimmt keine Verantwortung für die Einhaltung der Schutzanforderungen, wenn das Produkt ohne Zustimmung der Lenovo verändert bzw. wenn Erweiterungskomponenten von Fremdherstellern ohne Empfehlung der Lenovo gesteckt/eingebaut werden.

European Union (EU) Statement

This product is in conformity with the protection requirements of the EU Council Directive 2014/30/EU on the approximation of the laws of the Member States relating to electromagnetic compatibility

Lenovo can not accept responsibility for any failure to satisfy the protection requirements resulting from a non-recommended modification of the product, including the fitting of non-Lenovo option cards.

This product has been tested and found to comply with the limits for Class B equipment according to European Standards harmonized in the Directives in compliance.

The limits for Class B equipment were derived for typical residential environments to provide reasonable protection against interference with licensed communication devices.

Properly shielded and grounded cables and connectors must be used in order to reduce the potential for causing interference to radio and TV communications and to other electrical or electronic equipment. Such cables and connectors are available from Lenovo authorised dealers.

Europe – EU Declaration of Conformity

This device complies with the essential requirements of the Radio Equipment Directive (2014/53/EU).


The following test methods have been applied in order to prove presumption of conformity with the essential requirements of the Radio Equipment Directive

Radiation Exposure Statement:

This equipment complies with CE radiation exposure limits set forth for an uncontrolled environment.

This equipment should be installed and operated with minimum distance 20cm between the radiator & body.

The device is restricted to indoor use only when operating in the 5150 to 5350MHz frequency range. (for 5G product only)

	AT	BE	BG	HR	CY	CZ	DK
	EE	FI	FR	DE	EL	HU	IE
	IT	LV	LT	LU	MT	NL	PL
	PT	RO	SK	SI	ES	SE	UK

Spécifications de la CEE

Ce produit est conforme aux exigences de protection de la directive 2014/30/EU du Conseil de l'UE sur le rapprochement des lois des États membres en matière de compatibilité électromagnétique.

Lenovo ne peut accepter aucune responsabilité pour le manquement aux exigences de protection résultant d'une modification non recommandée du produit, y compris l'installation de cartes autres que les cartes Lenovo.

Ce produit a été testé et il satisfait les conditions de l'équipement de Classe B en vertu de la norme harmonisée de la directive. Les conditions pour l'équipement de Classe B ont été définies en fonction d'un contexte résidentiel ordinaire afin de fournir une protection raisonnable contre l'interférence d'appareils de communication autorisés.

Des câbles blindés et correctement reliés à la terre doivent être utilisés pour réduire les risques d'interférence avec des communications radio et télévisées, ainsi qu'avec des équipements électriques ou électroniques. Ces câbles et connecteurs sont disponibles auprès de vos revendeurs Lenovo agréés.

Deutschland:

Einhaltung des Gesetzes über die elektromagnetische Verträglichkeit von Betriebsmitteln Dieses Produkt entspricht dem "Gesetz über die elektromagnetische Verträglichkeit von Betriebsmitteln" EMVG (früher "Gesetz über die elektromagnetische Verträglichkeit von Geräten"). Dies ist die Umsetzung der EU-Richtlinie 2014/30/EU in der Bundesrepublik Deutschland.

Zulassungsbescheinigung laut dem Deutschen Gesetz über die elektromagnetische Verträglichkeit von Betriebsmitteln, EMVG vom 20. Juli 2007 (früher Gesetz über die elektromagnetische Verträglichkeit von Geräten), bzw. der EMV EG Richtlinie 2014/30/EU, für Geräte der Klasse B.

Dieses Gerät ist berechtigt, in Übereinstimmung mit dem Deutschen EMVG das EG-Konformitätszeichen

- CE - zu führen. Verantwortlich für die Konformitätserklärung nach Paragraph 5 des EMVG ist die Lenovo (Deutschland) GmbH, Meitnerstr. 9, D-70563 Stuttgart.

Informationen in Hinsicht EMVG Paragraph 4 Abs. (1) 4:

Declaración de la Unión Europea (UE)

Este producto satisface los requisitos de protección del Consejo de la UE, Directiva 2014/30/EU en lo que a la legislación de los Estados Miembros sobre compatibilidad electromagnética se refiere.

Lenovo no puede aceptar responsabilidad alguna si este producto deja de satisfacer dichos requisitos de protección como resultado de una modificación no recomendada del producto, incluyendo el ajuste de tarjetas de opción que no sean Lenovo.

Este producto ha sido probado y satisface los límites para Equipos Clase B de conformidad con el Estándar armonizada en la Directiva. Los límites para los equipos de Clase B se han establecido para entornos residenciales típicos a fin de proporcionar una protección razonable contra las interferencias con dispositivos de comunicación licenciados.

Se deben utilizar conectores y cables debidamente protegidos y conectados a tierra a fin de reducir las posibilidades de que se produzcan interferencias con comunicaciones por radio o televisión y otros equipos eléctricos o electrónicos. Este tipo de cables y conectores pueden adquirirse en concesionarios autorizados de Lenovo.

Dichiarazione di conformità dell'Unione Europea (EU)

Questo prodotto è conforme alle normative di protezione ai sensi della Direttiva del Consiglio dell'Unione Europea 2014/30/EU sull'armonizzazione legislativa degli stati membri in materia di compatibilità elettromagnetica.

IBM non accetta responsabilità alcuna per la mancata conformità alle normative di protezione dovuta a modifiche non consentite al prodotto, compresa l'installazione di schede e componenti di marca diversa da Lenovo.

Le prove effettuate sul presente prodotto hanno accertato che esso rientra nei limiti stabiliti per le apparecchiature di Classe B ai sensi della norma armonizzata dalla Direttiva. I limiti delle apparecchiature della Classe B sono stati stabiliti al fine di fornire ragionevole protezione da interferenze mediante dispositivi di comunicazione in concessione in ambienti residenziali tipici.

ragionevole protezione da interferenze mediante dispositivi di comunicazione in concessione in ambienti residenziali tipici.

Utilizzare cavi e connettori collegati a terra per ridurre il rischio potenziale di interferenza delle comunicazioni radiotelevisive e di altri apparecchi elettrici o elettronici. I cavi sono disponibili presso i rivenditori Lenovo.

Europeiska unionen (EU)

Denna produkt har testats och följer gränsvärdena för Klass B Equipment enligt . Gränsvärden för Klass B- utrustning utgår från vanliga bostadsområden för att ge ett rimligt skydd mot störningar i kommunikationsenheter.

Korrekt avskärmade och jordade kablar och kontakter måste användas för att minska risken för störningar i radio- och TV-kommunikationer och annan elektrisk utrustning. Sådana kablar och kontakter finns tillgängliga hos auktoriserade Lenovo-återförsäljare.

Deutsche EMV-Direktive (electromagnetische Verträglichkeit)

Dieses Gerät ist berechtigt in Übereinstimmung mit dem deutschen EMVG vom 9.Nov.92 das EG-Konformitätszeichen zu führen.

Der Aussteller der Konformitätserklärung ist die Lenovo UK, Greenock.

European Union - Compliance to the Electromagnetic Compatibility Directive

This product is in conformity with the protection requirements of EU Council Directive 2014/30/EU on the approximation of the laws of the Member States relating to electromagnetic compatibility. Lenovo cannot accept responsibility for any failure to satisfy the protection requirements resulting from a non-recommended modification of the product, including the installation of option cards from other manufacturers.

This product has been tested and found to comply with the limits for Class B equipment according to European Standard harmonized in the Directive. The limits for Class B equipment were derived for typical residential environments to provide reasonable protection against interference with licensed communication devices.

Avis de conformité à la directive de l'Union Européenne

Le présent produit satisfait aux exigences de protection énoncées dans la directive 2014/30/EU du Conseil concernant le rapprochement des législations des Etats membres relatives à la compatibilité électromagnétique. Lenovo décline toute responsabilité en cas de non-respect de cette directive résultant d'une modification non recommandée du produit, y compris l'ajout de cartes en option non Lenovo.

Ce produit respecte les limites de Classe B en vertu de la norme harmonisée de la directive. La conformité aux spécifications de la classe B offre une garantie acceptable contre les perturbations avec les appareils de communication agréés, dans les zones résidentielles.

Unión Europea - Normativa EMC

Este producto satisface los requisitos de protección del Consejo de la UE, Directiva 2014/30/EU en lo que a la legislación de los Estados Miembros sobre compatibilidad electromagnética se refiere.

Lenovo no puede aceptar responsabilidad alguna si este producto deja de satisfacer dichos requisitos de protección como resultado de una modificación no recomendada del producto, incluyendo el ajuste de tarjetas de opción que no sean Lenovo.

Este producto ha sido probado y satisface los límites para Equipos Clase B de conformidad con el Estándar Europeo armonizada en la Directiva. Los límites para los equipos de Clase B se han establecido para entornos residenciales típicos a fin de proporcionar una protección razonable contra las interferencias con dispositivos de comunicación licenciados.

Unione Europea - Directiva EMC (Conformidad electromagnética)

Questo prodotto è conforme alle normative di protezione ai sensi della Direttiva del Consiglio dell'Unione Europea 2014/30/EU sull'armonizzazione legislativa degli stati membri in materia di compatibilità elettromagnetica.

Lenovo non accetta responsabilità alcuna per la mancata conformità alle normative di protezione dovuta a modifiche non consigliate al prodotto, compresa l'installazione di schede e componenti di marca diversa da Lenovo.

Le prove effettuate sul presente prodotto hanno accertato che esso rientra nei limiti stabiliti per le apparecchiature di Classe B ai sensi del Norma Europea armonizzato dalla Direttiva.

I limiti delle apparecchiature della Classe B sono stati stabiliti al fine di fornire ragionevole protezione da interferenze mediante dispositivi di comunicazione in concessione in ambienti residenziali tipici.

Korea Class B Compliance

B 급 기기 사용자 안내문
(가정용 방송통신기자재)

이 기기는 가정용(B 급) 전자파적합기기로서 주로 가정에서 사용하는 것을 목적으로 하며, 모든 지역에서 사용할 수 있습니다

Japan VCCI Class B Compliance

この装置は、情報処理装置等電波障害自主規制協議会（VCCI）の基準に基づくクラスB情報技術装置です。この装置は、家庭環境で使用することを目的としていますが、この装置がラジオやテレビジョン受信機に近接して使用されると、受信障害を引き起こすことがあります。
取扱説明書に従って正しい取り扱いをして下さい。

Japanese statement of compliance for products less than or equal to 20 A per phase

日本の定格電流が 20A/相 以下の機器に対する高調波電流規制
高調波電流規格 JIS C 61000-3-2 適合品

Lenovo product service information for Taiwan

台灣 Lenovo 產品服務資訊如下：
荷蘭商聯想股份有限公司台灣分公司
台北市中山區北安路780號7樓
服務電話：0800-000-702

Power Cords

For your safety, Lenovo provides a power cord with a grounded attachment plug to use with this Lenovo product. To avoid electrical shock, always use the power cord and plug with a properly grounded power outlet.

The power cords used in the United States and Canada are listed by the Underwriter's Laboratories (UL) and certified by the Canadian Standards Association (CSA).

For units intended to be operated at 115 volts: Use a UL-listed and CSA-certified cord set consisting of a minimum 18 AWG, Type SVT or SJT, three-conductor cord, a maximum of 15 feet in length and a parallel blade, grounding-type attachment plug rated 15 amperes, 125 volts.

For units intended to be operated at 230 volts (U.S. use): Use a UL-listed and CSA-certified cord set consisting of a minimum 18 AWG, type SVT or SJT, three-conductor cord, a maximum of 15 feet in length and a tandem blade, grounding-type attachment plug rated 15 amperes, 250 volts.

For units intended to be operated at 230 volts (outside the U.S.): Use a cord set with a grounding-type attachment plug. The cord set should have the appropriate safety approvals for the country in which the equipment will be installed.

The power cords for a specific country or region are usually available only in that country or region.

EU ErP (EcoDesign) Directive (2009/125/EC) Implementing Measure (COMMISSION REGULATION (EU) 2019/1782 of 1 October 2019) requires manufacturers to provide the energy efficiency and rating information. Lenovo products are designed to work with a range of compatible chargers and different chargers may be shipped in box or purchased subsequently.

A list of suitable chargers can be found on the EU Declaration of Conformity (DoC) accessible here (<https://www.lenovo.com/us/en/compliance/eu-doc>). In order to access the applicable energy efficiency information for your charger, please access the following webpage, search for your product using the full model number and select the applicable user guide or power supply data sheet.


<https://support.lenovo.com/>

POWER CORD PART NUMBER	USED IN THESE COUNTRIES OR REGIONS
Direct Ship US/U1 Power Cord: 42T5004 (Longwell) SL60K75066 (Longwell) 42T5089 (Volex) SL60K75067 (Volex) 45N0129 (Luxshare) SL60K75068 (Luxshare)	Antigua and Barbuda, Aruba, Bahamas, Barbados, Belize, Bermuda, Bolivia, Canada, Cayman Islands, Costa Rica, Columbia, Cuba, Dominican Republic, Ecuador, El Salvador, Guam, Guatemala, Haiti, Honduras, Jamaica, Mexico, Micronesia (Federal States of), Netherlands Antilles, Nicaragua, Panama, Peru, Philippines (HV use), Thailand, Turks and Caicos Islands, United States, Venezuela
Direct Ship APU Power Cord: 42T5017 (Longwell) SL60K75072 (Longwell) 42T5102 (Volex) SL60K75073 (Volex) 45N0409 (Luxshare) SL60K75074 (Luxshare)	Argentina, Paraguay, Uruguay
Direct Ship BRA Power Cord: 42T5174 (Longwell) SL60K75075 (Longwell) 42T5177 (Volex) SL60K75076 (Volex) 45N0412 (Luxshare) SL60K75077 (Luxshare)	Brazil
Direct Ship EU Power Cord: 42T5029 (Longwell) SL60K75078 (Longwell) 42T5114 (Volex) SL60K75079 (Volex) 45N0422 (Luxshare) SL60K75080 (Luxshare)	Afghanistan, Albania, Algeria, Andorra, Angola, Armenia, Austria, Azerbaijan, Belarus, Belgium, Benin, Bosnia and Herzegovina, Bulgaria, Burkina Faso, Burundi, Cambodia, Cameroon, Cape Verde, Central African Republic, Chad, Comoros, Congo (Democratic Republic of), Congo (Republic of), Cote D'Ivoire (Ivory Coast), Croatia (Republic of), Czech Rep, Dahomey, Djibouti, Egypt, Equatorial Guinea, Eritrea, Estonia, Ethiopia, Finland, France, French Guyana, French Polynesia, Gabon, Georgia, Germany, Greece, Guadeloupe, Guinea, Guinea Bissau, Hungary, Iceland, Indonesia, Iran, Kazakhstan, Kyrgyzstan, Laos (Peoples Democratic Republic of), Latvia, Lebanon, Lithuania, Luxembourg, Macedonia (former Yugoslav Republic of), Madagascar, Mali, Martinique, Mauritania, Mauritius, Mayotte, Moldova (Republic of), Monaco, Mongolia, Morocco, Mozambique, Netherlands, New Caledonia, Niger, Norway, Poland, Portugal, Reunion, Romania, Russian Federation, Rwanda, Sao Tome and Principe, Saudi Arabia, Senegal, Serbia, Slovakia, Slovenia (Republic of), Somalia, Spain, Suriname, Sweden, Syrian Arab Republic, Tajikistan, Tahiti, Togo, Tunisia, Turkmenistan, Ukraine, Upper Volta, Uzbekistan, Vanuatu, Vietnam, Wallis and Futuna, Yugoslavia (Federal Republic of), Zaire

<p>Direct Ship UK/SD Power Cord: 42T5035 (Longwell) SL60K75090 (Longwell) 42T5120 (Volex) SL60K75091 (Volex) 45N0414 (Luxshare) SL60K75092 (Luxshare)</p>	<p>Abu Dhabi, Bahrain, Botswana, Brunei Darussalam, Channel Islands, Cyprus, Dominica, Gambia, Ghana, Grenada, Guyana, Hong Kong, Iraq, Ireland, Jordan, Kenya, Kuwait, Liberia, Malawi, Malaysia, Malta, Myanmar (Burma), Nigeria, Oman, Qatar, Saint Kitts & Nevis, Saint Lucia, Saint Vincent and the Grenadines, Seychelles, Sierra Leone, Singapore, Sudan, Tanzania (United Republic of), Trinidad & Tobago, United Arab Emirates (Dubai), United Kingdom, Yemen, Zambia, Zimbabwe, Uganda ,Saudi Arabia</p>
<p>Direct Ship DK Power Cord: 42T5041 (Longwell) SL60K75081 (Longwell) 42T5126 (Volex) SL60K75082 (Volex) 45N0410 (Luxshare) SL60K75083 (Luxshare)</p>	<p>Denmark</p>
<p>Direct Ship IT Power Cord: 42T5047 (Longwell) SL60K75087 (Longwell) 42T5132 (Volex) SL60K75088 (Volex) 45N0416 (Luxshare) SL60K75089 (Luxshare)</p>	<p>Chile, Italy, Libyan Arab Jamahiriya</p>
<p>Direct Ship IS Power Cord: 42T5062 (Longwell) SL60K75099 (Longwell) 42T5147 (Volex) SL60K75100 (Volex) 45N0413 (Luxshare) SL60K75101 (Luxshare)</p>	<p>Israel</p>
<p>Direct Ship CH Power Cord: 42T5044 (Longwell) SL60K75084 (Longwell) 42T5129 (Volex) SL60K75085 (Volex) 45N0411 (Luxshare) SL60K75086 (Luxshare)</p>	<p>Liechtenstein, Switzerland</p>

<p>Direct Ship SA Power Cord: 42T5056 (Longwell) SL60K75096 (Longwell) 42T5141 (Volex) SL60K75097 (Volex) 45N0421 (Luxshare) SL60K75098 (Luxshare)</p>	<p>Bangladesh, Lesotho, Maceo, Maldives, Namibia, Nepal, Pakistan, Samoa, South Africa, Sri Lanka, Swaziland</p>
<p>Direct Ship TK Power Cord: 42T5029 (Longwell) SL60K75078 (Longwell) 42T5114 (Volex) SL60K75079 (Volex) 45N0422 (Luxshare) SL60K75080 (Luxshare)</p>	<p>Turkey</p>
<p>Direct Ship ANZ Power Cord: 42T5050 (Longwell) SL60K75093 (Longwell) 2T5135 (Volex) SL60K75094 (Volex) 45N0418 (Luxshare) SL60K75095 (Luxshare)</p>	<p>Australia, Fiji, Kiribati, Nauru, New Zealand, Papua New Guinea</p>
<p>Direct Ship Japan Power Cord: 45N0437 (Longwell) SL60K75018 (Longwell) 45N0438 (Volex) NA (Volex) 45N0420 (Luxshare) SL60K75017 (Luxshare)</p>	<p>Japan</p>
<p>Direct Ship PRC Power Cord: 42T5065 (Longwell) SL60K75102 (Longwell) 42T5150 (Volex) SL60K75103 (Volex) 45N0131 (Luxshare) SL60K75104 (Luxshare)</p>	<p>China</p>

ENERGY STAR Compliances Section

	As an ENERGY STAR® Partner, Lenovo has determined that this product meets the ENERGY STAR® guidelines for energy efficiency
---	---

Congratulations!

You have just purchased an ENERGY STAR® qualified product

What is an ENERGY STAR® qualified product?

ENERGY STAR is a program run by the U.S. Environmental Protection Agency (EPA) and U.S. Department of Energy (DOE) that promotes energy efficiency.

This product qualifies for ENERGY STAR in the “factory default” settings and this is the setting in which power savings will be achieved.

Changing the factory default picture settings or enabling other features will increase power consumption that could exceed the limits necessary to qualify for ENERGY STAR rating.

For more information on the ENERGY STAR program, refer to energystar.gov.

ENERGY STAR®

Current criteria and information regarding the ENERGY STAR® program can be found at <http://www.energystar.gov>

ENERGY STAR and the ENERGY STAR® logo are registered US marks.

Restriction of Hazardous Substances (RoHS) Directive Compliance

This product meets the requirements of European Union directive 2011/65/EU, Restriction of Hazardous Substances (RoHS) Directive as they have been defined at the date of this product's announcement. The RoHS directive restricts the use of lead (Pb), mercury, cadmium, hexavalent chromium and PBB (polybrominated biphenyls) and PBDE (polybrominated diphenyl ethers) in products put on the market in the European Union after July 1, 2006.

A la date de sa mise sur le marché, le présent produit respecte les dispositions de la Directive 2011/65/CE du Parlement Européen et du Conseil relative à la limitation de l'utilisation de certaines substances dangereuses. Cette directive limite l'utilisation de plomb (Pb), de mercure, de cadmium, de chrome hexavalant, de polybromobiphényles (PBB) et de polybromodiphényléthers (PBDE) dans les produits qui seront mis sur le marché dans l'Union Européenne après le 1er juillet 2006.

Dieses Produkt entspricht den Anforderungen der EU-Richtlinie 2011/65/EG zur Beschränkung der Verwendung gefährlicher Stoffe (RoHS = Restriction of Hazardous Substances), wie diese zum Zeitpunkt der Ankündigung des Produkts definiert war. Die RoHS-Richtlinie verbietet das Inverkehrbringen von Produkten, die Blei, Quecksilber, Cadmium, 6-wertiges Chrom, polybromierte Biphenyle oder Diphenyläther enthalten, in der Europäischen Union ab dem 1. Juli 2006.

Questo prodotto soddisfa i requisiti dell'Unione Europea direttiva 2011/65/EU, Direttiva RoHS (Restriction of Hazardous Substances) appena sono definiti in data dell'annuncio di questo

prodotto. La direttiva RoHS limita l'utilizzo di piombo (Pb), mercurio, cadmio, cromo e PBB (polybrominated biphenyls) e PBDE (polybrominated diphenyl ethers) dei prodotti inseriti sul mercato nell'Unione Europea dopo il 1 luglio 2006.

Este producto reúne los requisitos de la normativa 2011/65/EU de la Unión Europea, sobre la restricción de sustancias peligrosas (RoHS) según estaban definidas en la fecha de anuncio de este producto. La normativa RoHS restringe el uso de plomo (Pb), mercurio, cadmio, cromo hexavalente y PBB (bifenilo polibromado) y PBDE (ésteres de difenilo polibromado) en productos que salgan al mercado en la Unión Europea a partir del 1 de julio de 2006.

Important information for the European Directive

2012/19/EU



Important WEEE Information

The WEEE marking on Lenovo products applies to countries with WEEE and e-waste regulations (for example, European Directive 2012/19/EU, India E-Waste Management & Handling Rules, 2016). Appliances are labeled in accordance with local regulations concerning waste electrical and electronic equipment (WEEE). These regulations determine the framework for the return and recycling of used appliances as applicable within each geography. This label is applied to various products to indicate that the product is not to be thrown away, but rather put in the established collective systems for reclaiming these end of life products. Users of electrical and electronic equipment (EEE) with the WEEE marking must not dispose of end of life EEE as unsorted municipal waste, but use the collection framework available to them for the return, recycle, and recovery of WEEE and to minimize any potential effects of EEE on the environment and human health due to the presence of hazardous substances. For additional WEEE information go to: <http://www.lenovo.com/recycling>

Wichtige WEEE-Hinweise

Die WEEE-Kennzeichnung von Lenovo-Produkten gilt für Länder mit WEEE- und e-waste-Vorgaben (beispielsweise europäische Richtlinie 2012/19/EU, India E-Waste Management & Handling Rules, 2016). Geräte werden in Übereinstimmung mit lokalen Vorgaben hinsichtlich elektrischen und elektronischen Altgeräten (WEEE) gekennzeichnet. Diese Vorgaben geben die Rahmenbedingungen zur Rückgabe und zum Recycling von Altgeräten innerhalb einzelner Regionen vor. Unterschiedliche Produkte werden mit dieser Kennzeichnung versehen, die signalisiert, dass das jeweilige Produkt nicht weggeworfen, sondern zur Rückgewinnung bei speziellen Sammelstellen abgegeben werden soll. Elektrische und elektronische Geräte (EEE) mit WEEE-Kennzeichnung dürfen nach Gebrauchsende nicht mit dem unsortierten Hausmüll entsorgt werden, sondern müssen über das etablierte Sammelstellennetz rückgegeben und recycelt werden, um mögliche negative Auswirkungen auf Umwelt und Gesundheit durch gefährliche Substanzen zu minimieren. Zusätzliche Informationen zu WEEE finden Sie hier: <http://www.lenovo.com/recycling>

Informations importantes au sujet des DEEE

Le marquage WEEE (DEEE en français) sur les produits Lenovo s'applique aux pays ayant des réglementations pour les DEEE et les déchets électroniques (par exemple la directive européenne 2012/19/CE, les règles indiennes de relatives à la gestion et à la manipulation des déchets électroniques). Les appareils sont étiquetés conformément aux réglementations locales concernant les déchets d'équipements électriques et électroniques (DEEE). Ces réglementations déterminent le cadre s'appliquant au retour et au recyclage des appareils usagés selon ce qui est en vigueur dans chaque zone géographique. Cette étiquette est appliquée à divers produits pour indiquer que le produit ne doit pas être jeté, mais plutôt dirigé vers les systèmes collectifs en place destinés à recevoir ces produits en fin de vie. Les utilisateurs d'équipements électriques et électroniques (EEE) ayant le marquage DEEE ne doivent pas jeter les EEE en fin de vie dans les déchets municipaux non triés, ils doivent utiliser le système de collecte qui leur est destiné pour le retour, le recyclage et la

reprise des DEEE et aussi pour minimiser les effets potentiels des EEE sur l'environnement et la santé humaine du fait de la présence de substances dangereuses. Pour de plus amples informations sur les DEEE, visitez : <http://www.lenovo.com/recycling>

Información importante sobre WEEE

La marca WEEE en los productos Lenovo es válida para los países con regulaciones WEEE y regulaciones de desechos electrónicos (por ejemplo, la Directiva Europea 2012/19/EU y las Normas de Manipulación y Administración de Desechos Electrónicos de India).

Los dispositivos incluyen esta marca conforme las regulaciones locales relacionadas con los residuos de dispositivos eléctricos y electrónicos (WEEE). Estas regulaciones determinan el esquema para la devolución y reciclaje de dispositivos usados, según corresponda dentro de cada geografía. Esta marca se aplica a diferentes productos para indicar que no se debe desechar el producto, sino colocarlo en sistemas de recolección establecidos para la recuperación de estos productos que han llegado al final de su vida útil. Los usuarios de dispositivos eléctricos y electrónicos (EEE) que posean la marca WEEE no deben desechar estos productos como residuos locales sin clasificación, sino que deben utilizar el método de recolección disponible para la devolución, reciclaje y recuperación de estos productos a fin de minimizar cualquier efecto potencial que podrían causar al medioambiente y salud humana debido a la presencia de sustancias peligrosas. Para obtener información adicional sobre WEEE, diríjase a: <http://www.lenovo.com/recycling>.

Importanti informazioni RAEE

Il simbolo RAEE sui prodotti Lenovo si applica ai paesi che si attengono alle normative RAEE ed e-waste (ad esempio, Direttiva europea 2012/19/CE, India E-Waste Management & Handling Rules, 2016). Gli apparecchi sono etichettati in conformità alle normative locali sullo smaltimento degli apparecchi elettrici ed elettronici (WEEE). Tali normative determinano il quadro per la restituzione e il riciclaggio di apparecchi usati, come applicabile all'interno di ciascuna area. Questa etichetta si applica a diversi prodotti ad indicare che non devono essere gettati via, ma essere portati presso i sistemi collettivi creati per raccogliere i prodotti al termine della loro vita utile. Gli utenti di apparecchi elettrici ed elettronici (AEE) con marchio RAEE non devono gettare via i propri AEE giunti alla fine della loro vita utile ma fare uso delle disposizioni di raccolta disponibili per la restituzione, il riciclaggio e il recupero di RAEE e per minimizzare qualsiasi effetto potenziale di AEE sull'ambiente e sulla salute umana a causa della presenza di sostanze pericolose. Per ulteriori informazioni RAEE, visitare il sito: <http://www.lenovo.com/recycling>

WEEE の重要な情報

Lenovo 製品の WEEE マークは WEEE および廃棄規制(例えば、欧州指令2012/19/EU、インドE 廃棄管理および処理規則)がある国に適用されます。機器は 廃電気電子機器指令(WEEE)に関する地域規制に従ってラベルされています。これらの規制は、各カテゴリ内部で適用可能として使用済み家庭用電化製品の返却およびリサイクルのフレームワークを決定します。このラベルはさまざまな製品に適用され、製品を捨ててはならず、これら寿命の切れた製品を再利用するための確立した回収システムに入れることを示します。WEEE マークの付いた電気電子機器(EEE)のユーザーは分類されていない都市ごみとして寿命の切れたEEEを廃棄してはならず、WEEEの返却、リサイクル、および回収のために使用可能な回収フレームワークを使用して危険物質の存在による、環境とヒトの健康にEEEの潜在的効果を 最小限に抑えるものとします。WEEEの追加情報については、にアクセスしてください。 <http://www.lenovo.com/recycling>。

Důležité informace WEEE

Označení WEEE na produktech Lenovo platí pro země s předpisy WEEE a s předpisy o elektronickém odpadu (například evropská směrnice 2012/19/EU, indická pravidla o nakládání a likvidaci elektronického odpadu). Spotřebiče jsou označovány v souladu s místními předpisy o elektrickém a elektronickém odpadu (WEEE). Tyto předpisy definují síť pro sběr a recyklaci použitých spotřebičů v jednotlivých zemích. Tento štítek se používá u různých výrobků a označuje, že po ukončení životnosti nemá být výrobek vyhozen, ale odevzdán do systému hromadného sběru k recyklaci. Uživatelé elektrického a elektronického vybavení (EEE) s označením WEEE nesmí likvidovat EEE s ukončenou životností jako netříděný komunální odpad, ale musí využít dostupný sběrný systém k odevzdání,

recyklaci a obnovení WEEE a k minimalizaci jakýchkoli možných dopadů EEE na životní prostředí a lidské zdraví z důvodu přítomnosti nebezpečných látek. Další informace o WEEE najdete na: <http://www.lenovo.com/recycling>.

Viktig WEEE Information

WEEE mærket på Lenovo produkter er gældende i lande med WEEE og e-affaldsregulativer (for eksempel, Det Europæiske Direktiv 2012/19/EU, Indien E-Affald administration & Håndterings regler). Apparater er mærket i overensstemmelse med lokale regulativer om elektrisk og elektronisk affald (WEEE). Disse regulativer bestemmer rammeværket for returnering og gen-anvendelse af brugte apparater der gælder indenfor hvert geografisk område. Denne mærkat sættes på forskellige produkter for at indikere at produktet ikke må bortskaffes, men kommer i det etablerede kollektive system for genanvendelse af disse ved slutningen af deres levetid. Brugere af elektrisk og elektronisk udstyr (EEE) med WEEE mærkning skal ikke bortskaffes ved slutningen af deres levetid EEE som usorteret kommunalt affald, men bruge det indsamlings rammeværk, der findes for at returnere, genbruge og udvinding af, WEEE og for minimere de potentielle effekter på miljøet og den menneskelige sundhed på grund af tilstedeværelsen af farlige stoffer. For yderligere WEEE information gå til: <http://www.lenovo.com/recycling>.

Belangrijke WEEE-informatie

De WEEE-markering op Lenovo-producten is van toepassing op landen met bepalingen met betrekking tot WEEE en elektronisch afval (bijv. Europese Richtlijn 2012/19/EG, de Indiase "E-Waste Management & Handling"-regels, 2016). Apparaten zijn gelabeld in overeenstemming met lokale voorschriften betreffende het verwijderen van afval van elektrische en elektronische apparatuur (WEEE). Deze voorschriften bepalen het kader voor het retourneren of de recycling van versleten apparaten, zoals van toepassing binnen elk geografisch gebied. Dit label wordt aangebracht op verschillende producten om aan te geven dat ze niet mogen worden weggegooid, maar moeten worden afgeleverd bij gevestigde gemeenschappelijke systemen voor het inzamelen van deze producten die het einde van hun levensduur hebben bereikt. Gebruikers van elektrische en elektronische apparatuur (EEE) met de WEEE-markering mogen EEE aan het einde van hun levensduur niet weggooien bij niet-gesorteerd huishoudelijk afval, maar moeten het inzamelsysteem gebruiken dat beschikbaar is voor het retourneren, recycling en herstel van WEEE en moeten eventuele potentiële effecten van EEE op het milieu en de menselijke gezondheid vanwege de aanwezigheid van gevaarlijke stoffen, voorkomen. Meer informatie over WEEE vindt u op: <http://www.lenovo.com/recycling>.

Tärkeitä WEEE-tietoja

Lenovo-tuotteiden WEEE-merkintä on käytössä maissa, joissa noudatetaan WEEE- ja e-jättesäädöksiä (esimerkiksi eurooppalainen direktiivi 2012/19/EY, Intian E-jätteen hallinta ja käsittelysäännöt). Laitteet on merkitty paikallisten sähkö- tai elektroniikkajätettä (WEEE) koskevien säädösten mukaisesti. Nämä säädökset määrittävät puitteet käytettyjen laitteiden palautukselle ja kierrättämiselle soveltuvasti kullakin maantieteellisellä alueella. Tätä merkintää käytetään erilaisissa tuotteissa ilmaisemaan, että tuotetta ei saa heittää pois, vaan se on toimitettava paikalliseen keräyspisteeseen, jotka huolehtivat näistä käyttöikänsä päin saavuttaneista tuotteista. WEEE-merkinnällä varustettujen sähkö- ja elektroniikkalaitteiden (EEE) käyttäjät eivät saa hävittää käyttöikänsä lopun saavuttaneita EEE-tuotteita lajittelemattoman kotitalousjätteen mukana, vaan heidän on toimitettava tuotteet keräysjärjestelmään, jossa ne voidaan kierrättää ja ottaa uudelleen käyttöön WEEE-säädösten mukaisesti minimoiden samalla kaikki EEE-tuotteiden vaarallisista aineista johtuvat mahdolliset riskit ympäristölle ja terveydelle. Saati lisätietoja WEEE-merkinnästä osoitteesta: <http://www.lenovo.com/recycling>.

Fontos WEEE-információ

A Lenovo termékein található WEEE-jelölés azon országokra vonatkozik, ahol WEEE és e-hulladékról szóló szabályozás van érvényben (például a 2012/19/EK sz. európai irányelv, indiai e-hulladékkezelési és feldolgozási szabályok). A készülékek címkézése az elektromos és elektronikus berendezések hulladékával (WEEE) kapcsolatos helyi szabályok szerint történik. E szabályok megállapítják az elhasznált készülékek visszavételének és újrahasznosításának keretrendszerét az egyes földrajzi területeken. Ez a címke különböző termékekre kerül annak jelzésére, hogy a terméket nem szabad kidobni, hanem az élettartamuk végére ért termékek visszanyerésére rendszeresített begyűjtő rendszerekbe kell juttatni őket. A WEEE-jelöléssel ellátott elektromos és elektronikus berendezések (EEE) felhasználóinak nem szabad az élettartamának végéhez ért EEE-t szelektálatlan háztartási hulladékként elhelyezni, hanem a WEEE visszavétele, újrahasznosítása és visszanyerése, illetve az EEE-nek a veszélyes anyagok jelenléte miatt a környezetre és az egészségre gyakorolt potenciális hatásainak minimálisra csökkentése érdekében rendelkezésre álló keretrendszert kell igénybe venniük. Bővebb WEEE-információért látogassa meg a következő oldalt: <http://www.lenovo.com/recycling>.

Viktig informasjon om WEEE

WEEE-merkingen på Lenovo-produkter gjelder for land med WEEE og e-avfallsreguleringer (for eksempel, europeiske direktiv 2012/19/EU, India e-avfallshåndtering og kontrollregler). Apparater er merket i henhold til lokale bestemmelser om kasting av elektrisk og elektronisk utstyr (WEEE). Disse bestemmelsene bestemmer rammeverket for retur og resirkulering av brukte apparater som gjeldende for hvert geografiske område. Denne etiketten brukes på forskjellige produkter for å indikere at produktet ikke skal kastes, men heller plasseres i etablerte innsamlingsystem for gjenvinning ved slutten av levetiden. Brukere av elektrisk og elektronisk utstyr (EEE) med WEEE-merkingen må ikke kaste elektrisk og elektronisk avfall som usortert husholdningsavfall, men i stedet bruke innsamlingsrammeverket som er tilgjengelig for returnering, resirkulering og gjenvinning av WEEE for å minimere mulige effekter elektrisk og elektronisk avfall har på miljøet og menneskers helse på grunn av tilstedeværelsen av farlige stoffer. For mer informasjon om WEEE, gå til: <http://www.lenovo.com/recycling>.

Informação importante sobre REEE (Resíduos de Equipamentos

Elétricos e Eletrônicos)

A marcação REEE nos produtos Lenovo aplica-se aos países com regulamentos sobre REEE e lixo eletrônico (por exemplo, a Diretiva Europeia 2012/19/CE, as Regras de Gestão e Manuseamento de Lixo Eletrônico da Índia de). Os aparelhos são etiquetados de acordo com os regulamentos locais respeitantes a resíduos de equipamento elétrico e eletrônico (REEE). Estes regulamentos determinam a estrutura para a devolução e reciclagem de aparelhos usados, tal como aplicável em cada localização. Esta etiqueta é aplicada a vários produtos para indicar que o produto não deve ser colocado junto com o lixo doméstico, mas deverá ser colocado em sistemas de recolha estabelecidos que recebem estes produtos em fim de vida. Os utilizadores de equipamento elétrico e eletrônico (EEE) com a marcação REEE não devem eliminar os EEE em fim de vida como lixo municipal não separado, mas devem utilizar a estrutura de recolha que estiver disponível para a devolução, reciclagem e recuperação dos REEE e para minimizar quaisquer efeitos potenciais dos EEE no ambiente e na saúde humana devido à presença de substâncias perigosas. Para obter informações adicionais sobre os REEE, visite: <http://www.lenovo.com/recycling>.

Viktig WEEE-information

WEEE-märkningen på Lenovo-produkter gäller för länder med WEEE och e-avfallsbestämmelser (till exempel Europeiska direktivet 2012/19/EG, Indiens e-avfalls skötsel- och hanteringsregler). Apparater som är märkta i enlighet med lokala bestämmelser beträffande avfall av elektriska och elektroniska utrustningar (waste electrical and electronic equipment/WEEE). Dessa bestämmelser utgör ramverket för returnering och återvinning av använda apparater som är tillämpliga inom varje geografiskt område. Denna etikett gäller för olika produkter för att indikera att produkten inte får kastas utan samlas in via de etablerade insamlingsystemen återvinna dessa produkter när de är förbrukade. Användare av elektrisk och elektronisk utrustning (electrical and electronic equipment/EEE) med WEEE märkningen får inte kasta dessa i de vanliga hushållsoporna när de är förbrukade utan returnera dessa EEE till de tillgängliga

insamlingssystem för återvinning och återanvändning av WEEE och för att minimera EEE potentiella effekter på miljön och människors hälsa på grund av de farliga substanser de innehåller. För ytterligare WEEE information gå till: <http://www.lenovo.com/recycling>.

Σημαντικές πληροφορίες WEEE

Η σήμανση WEEE στα προϊόντα Lenovo ισχύει σε χώρες με κανονισμούς WEEE και ηλεκτρονικών απορριμμάτων (π.χ., Ευρωπαϊκή Οδηγία 2012/19/EU, Ινδία Κανονισμοί διαχείρισης και χειρισμού ηλεκτρικών & ηλεκτρονικών απορριμμάτων). Η σήμανση των συσκευών εξαρτάται από τους τοπικούς κανονισμούς σχετικά με την απόρριψη ηλεκτρικών και ηλεκτρονικών συσκευών (WEEE). Αυτοί οι κανονισμοί καθορίζουν το πλαίσιο για την επιστροφή και ανακύκλωση χρησιμοποιημένων συσκευών όπως ισχύουν σε κάθε γεωγραφική περιοχή. Αυτή η ετικέτα τοποθετείται σε διάφορα προϊόντα για να υποδείξει ότι το προϊόν δεν πρέπει να απορρίπτεται μαζί με τα οικιακά απορρίμματα αλλά να τοποθετείται στα ειδικά συστήματα περισυλλογής των προϊόντων αυτών στο τέλος του κύκλου ζωής τους. Οι χρήστες ηλεκτρικών και ηλεκτρονικών συσκευών (EEE) που φέρουν το σήμα WEEE δεν πρέπει να απορρίπτουν τις συσκευές EEE μαζί με τα οικιακά δημοτικά απορρίμματα αλλά να χρησιμοποιούν το διαθέσιμο πλαίσιο περισυλλογής για την επιστροφή, ανακύκλωση και ανάκτηση των συσκευών με σκοπό την ελαχιστοποίηση δυνητικών επιρροών στο περιβάλλον και την ανθρώπινη υγεία εξαιτίας της παρουσίας επικίνδυνων ουσιών στα εξαρτήματα αυτά. Για περισσότερες πληροφορίες σχετικά με το WEEE, επισκεφθείτε την ιστοσελίδα: <http://www.lenovo.com/recycling>.

有害物质

为满足中国电子电气产品有害物质限制相关的法律法规和其他要求，联想公司对本产品中有害物质，按部件分类，声明如下。

部件名称	有害物质					
	铅(Pb)	汞(Hg)	镉(Cd)	六价铬 (Cr(VI))	多溴联 苯(PBB)	多溴二苯 醚(PBDE)
外壳	○	○	○	○	○	○
液晶显示屏/灯管	×	○	○	○	○	○
电路板组件*	×	○	○	○	○	○
电源线/连接线	×	○	○	○	○	○
金属件	×	○	○	○	○	○
附件	×	○	○	○	○	○

本表格依据 SJ/T 11364 的规定编制。

*：电路板组件包括印刷电路板及其构成的零部件，如电阻、电容、集成电路、连接器等。

○：表示该有害物质在该部件所有均质材料中的含量均在GB/T 26572规定的限量要求以下。

×：表示该有害物质至少在该部件的某一均质材料中的含量超出GB/T 26572规定的限量要求。

注：表中标记“×”的部件，皆因全球技术发展水平限制而无法实现有害物质的替代。

低功率電波輻射性電機管理辦法

取得審驗證明之低功率射頻器材，非經核准，公司、商號或使用者均不得擅自變更頻率、加大功率或變更原設計之特性及功能。低功率射頻器材之使用不得影響飛航安全及干擾合法通信；經發現有干擾現象時，應立即停用，並改善至無干擾時方得繼續使用。前述合法通信，指依電信管理法規定作業之無線電通信。低功率射頻器材須忍受合法通信或工業、科學及醫療用電波輻射性電機設備之干擾。

Turkish statement of compliance

The Lenovo product meets the requirements of the Republic of Turkey Directive on the Restriction of the Use of Certain Hazardous Substances in Electrical and Electronic Equipment (EEE).

Türkiye EEE Yönetmeliğine Uygunluk Beyanı

Bu Lenovo ürünü, T.C. Çevre ve Orman Bakanlığı'nın "Elektrik ve Elektronik Eşyalarda Bazı Zararlı Maddelerin Kullanımının Sınırlanmasına Dair Yönetmelik (EEE)" direktiflerine uygundur.

EEE Yönetmeliğine Uygundur.

Lenovo and the Lenovo logo are trademarks of Lenovo in the United States, other countries, or both.

Ukraine RoHS

Цим підтверджуємо, що продукція Леново відповідає вимогам нормативних актів України, які обмежують вміст небезпечних речовин.

India RoHS

RoHS compliant as per E-Waste (Management & Handling) Rules, 2016.



เครื่องวิทยุคมนาคมนี้ ได้รับยกเว้น ไม่ต้องได้รับ
ใบอนุญาตให้มี ใช้ซึ่งเครื่องวิทยุคมนาคม
หรือตั้งสถานีวิทยุคมนาคมตามประกาศ กสทช.
เรื่อง เครื่องวิทยุคมนาคม และสถานีวิทยุ
คมนาคมที่ได้รับยกเว้นไม่ต้องได้รับใบอนุญาต
วิทยุคมนาคม ตามพระราชบัญญัติวิทยุ
คมนาคม พ.ศ. 2498



กสทช. โทรคมนาคม
กำกับดูแลเพื่อประชาชน
Call center 1200 (InSW)