

20160614_System Check_Dipole2450 sn728

Frequency: 2450 MHz; Duty Cycle: 1:1; Room Ambient Temperature: 24.0°C; Liquid Temperature: 23.0°C

Medium parameters used (interpolated): $f = 2450$ MHz; $\sigma = 1.88$ mho/m; $\epsilon_r = 52.3$; $\rho = 1000$ kg/m³ ;

DASY4 Configuration:

- Area Scan setting - Find Secondary Maximum Within: 2.0 dB and with a peak SAR value greater than 0.0012W/kg
- Electronics: DAE4 Sn558; Calibrated: 7/16/2015
- Probe: EX3DV4 - SN3554; ConvF(6.1, 6.1, 6.1); Calibrated: 10/1/2015
- Sensor-Surface: 2mm (Mechanical Surface Detection)
- Phantom: SAM 34-1; Type: SAM V4.0; Serial: TP-1150

Body/Pin=100mW, d=10mm/Area Scan (8x9x1): Measurement grid: dx=15mm, dy=15mm

Maximum value of SAR (measured) = 4.58 mW/g

Body/Pin=100mW, d=10mm/Zoom Scan (7x7x7)/Cube 0: Measurement grid: dx=5mm, dy=5mm,

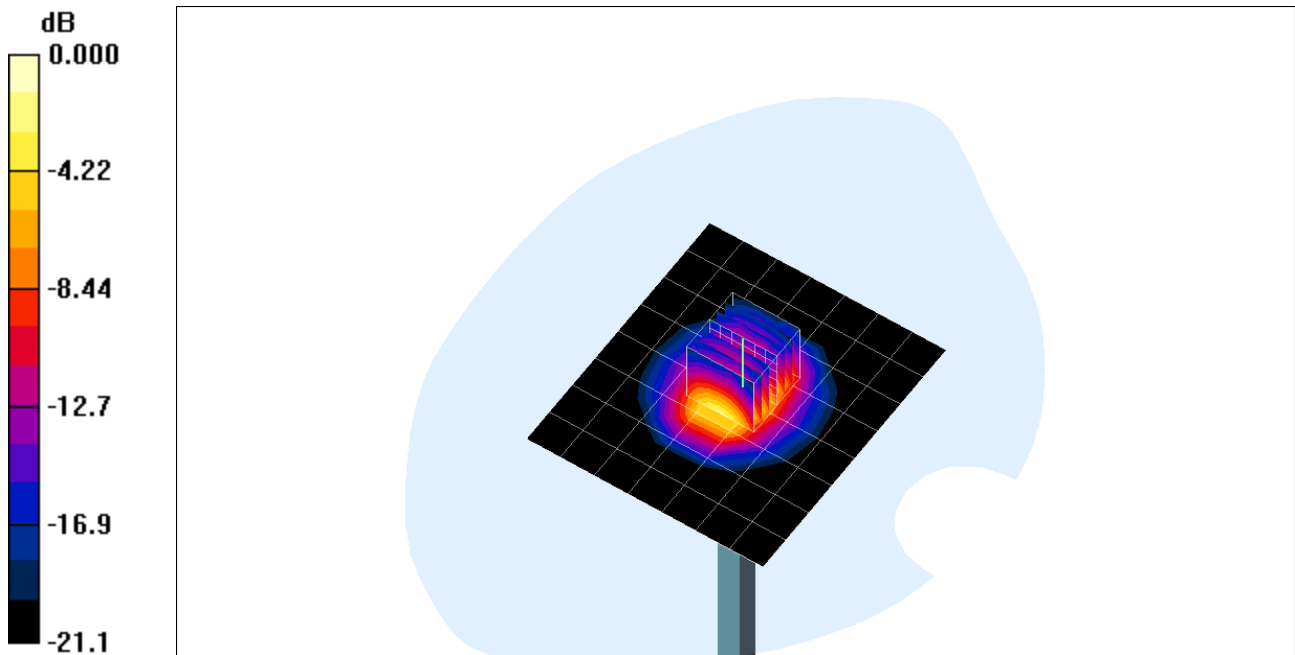
dz=5mm

Reference Value = 64.2 V/m; Power Drift = 0.058 dB

Peak SAR (extrapolated) = 10.1 W/kg

SAR(1 g) = 5 mW/g; SAR(10 g) = 2.36 mW/g

Maximum value of SAR (measured) = 7.49 mW/g



0 dB = 7.49mW/g

20160614_System Check_Dipole2450 sn728

Frequency: 2450 MHz; Duty Cycle: 1:1

Body/Pin=100mW, d=10mm/Z Scan (1x1x21): Measurement grid: dx=20mm, dy=20mm, dz=5mm
Maximum value of SAR (measured) = 7.54 mW/g

