

## Wi-Fi 2.4GHz Band

Frequency: 2437 MHz; Duty Cycle: 1:1; Room Ambient Temperature: 24.0°C; Liquid Temperature: 23.0°C

Medium parameters used (interpolated):  $f = 2437$  MHz;  $\sigma = 1.95$  mho/m;  $\epsilon_r = 53.9$ ;  $\rho = 1000$  kg/m<sup>3</sup> ;

DASY4 Configuration:

- Area Scan setting - Find Secondary Maximum Within: 2.0 dB and with a peak SAR value greater than 0.0012W/kg
- Electronics: DAE4 Sn558; Calibrated: 7/16/2015
- Probe: EX3DV4 - SN3554; ConvF(6.1, 6.1, 6.1); Calibrated: 10/1/2015
- Sensor-Surface: 2mm (Mechanical Surface Detection)
- Phantom: SAM 34-1; Type: SAM V4.0; Serial: TP-1150

**Rear/802.11b/ch6/Area Scan (7x9x1):** Measurement grid: dx=15mm, dy=15mm

[Info: Interpolated medium parameters used for SAR evaluation.](#)

Maximum value of SAR (measured) = 0.133 mW/g

**Rear/802.11b/ch6/Zoom Scan (5x5x7)/Cube 0:** Measurement grid: dx=7.5mm, dy=7.5mm, dz=5mm

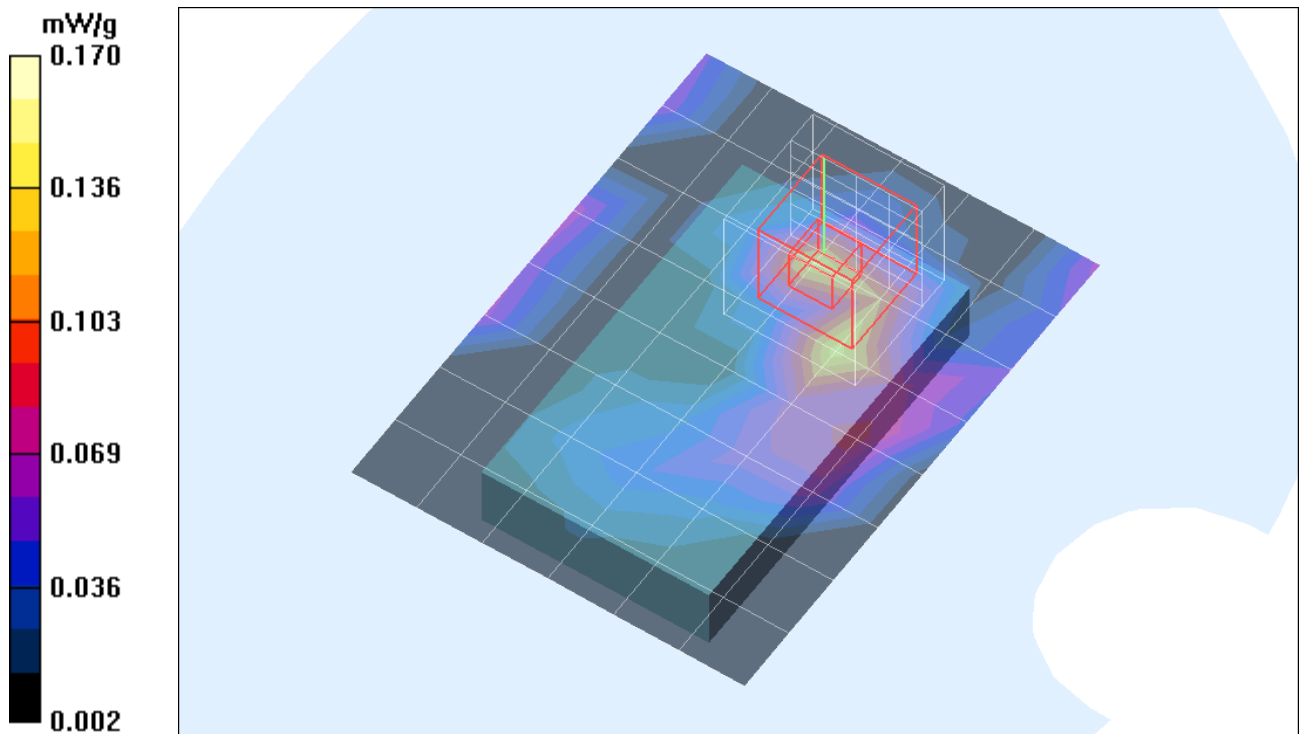
Reference Value = 0.000 V/m; Power Drift = 0.089 dB

Peak SAR (extrapolated) = 0.203 W/kg

**SAR(1 g) = 0.132 mW/g; SAR(10 g) = 0.067 mW/g**

[Info: Interpolated medium parameters used for SAR evaluation.](#)

Maximum value of SAR (measured) = 0.170 mW/g



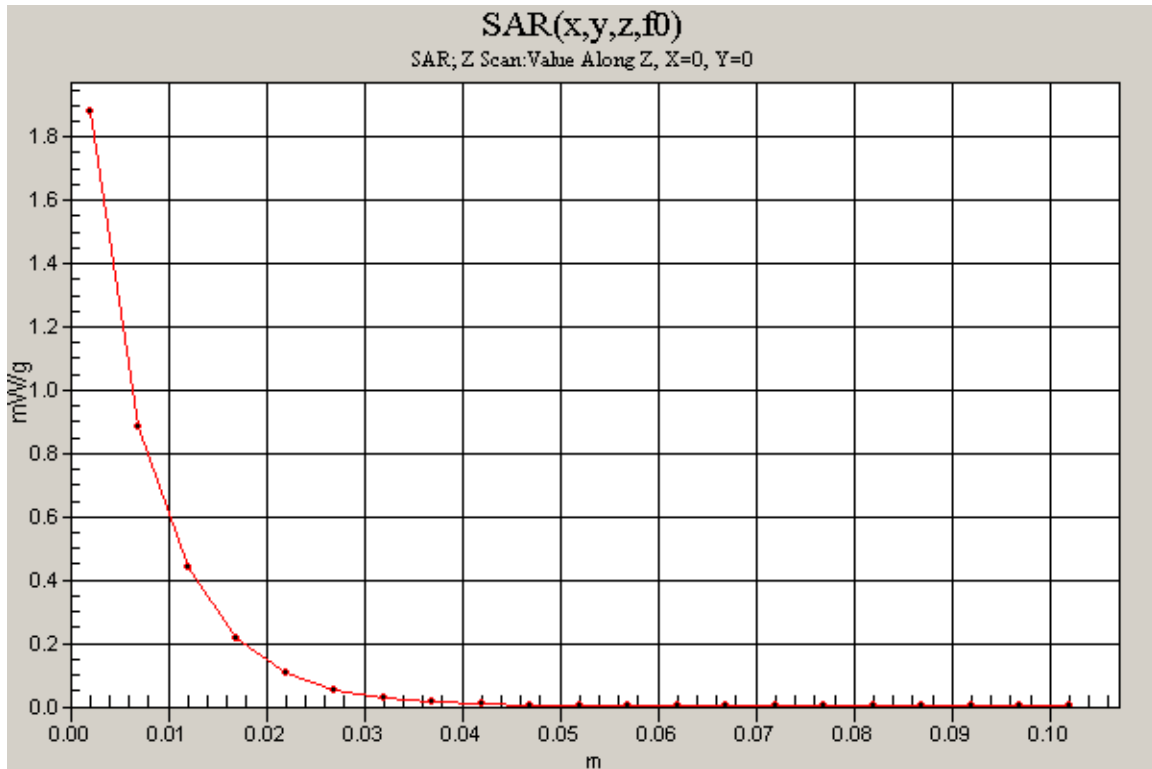
## Wi-Fi 2.4GHz Band

Frequency: 2437 MHz; Duty Cycle: 1:1

**Rear/802.11b/ch6/Z Scan (1x1x21):** Measurement grid: dx=20mm, dy=20mm, dz=5mm

Info: [Interpolated medium parameters used for SAR evaluation.](#)

Maximum value of SAR (measured) = 0.202 mW/g



## Wi-Fi 2.4GHz Band

Frequency: 2412 MHz; Duty Cycle: 1:1; Room Ambient Temperature: 24.0°C; Liquid Temperature: 23.0°C

Medium parameters used:  $f = 2412.7$  MHz;  $\sigma = 1.91$  mho/m;  $\epsilon_r = 54$ ;  $\rho = 1000$  kg/m<sup>3</sup> ;

DASY4 Configuration:

- Area Scan setting - Find Secondary Maximum Within: 2.0 dB and with a peak SAR value greater than 0.0012W/kg
- Electronics: DAE4 Sn558; Calibrated: 7/16/2015
- Probe: EX3DV4 - SN3554; ConvF(6.1, 6.1, 6.1); Calibrated: 10/1/2015
- Sensor-Surface: 2mm (Mechanical Surface Detection)
- Phantom: SAM 34-1; Type: SAM V4.0; Serial: TP-1150

**Edge4/802.11g/ch1/Area Scan (5x9x1):** Measurement grid: dx=15mm, dy=15mm

Maximum value of SAR (measured) = 0.216 mW/g

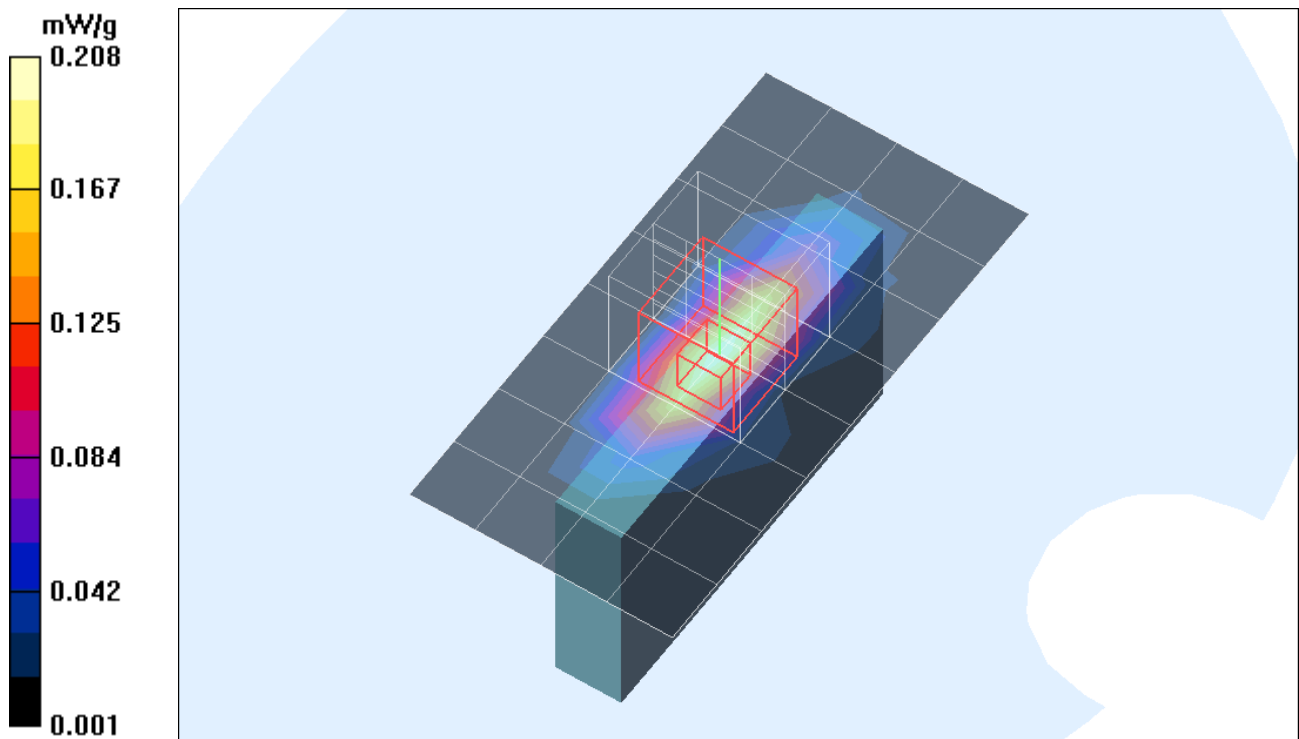
**Edge4/802.11g/ch1/Zoom Scan (5x5x7)/Cube 0:** Measurement grid: dx=7.5mm, dy=7.5mm, dz=5mm

Reference Value = 11.0 V/m; Power Drift = -0.050 dB

Peak SAR (extrapolated) = 0.292 W/kg

**SAR(1 g) = 0.133 mW/g; SAR(10 g) = 0.060 mW/g**

Maximum value of SAR (measured) = 0.208 mW/g



## Wi-Fi 2.4GHz Band

Frequency: 2412 MHz; Duty Cycle: 1:1

**Edge4/802.11g/ch1/Z Scan (1x1x21):** Measurement grid: dx=20mm, dy=20mm, dz=5mm  
Maximum value of SAR (measured) = 0.205 mW/g

