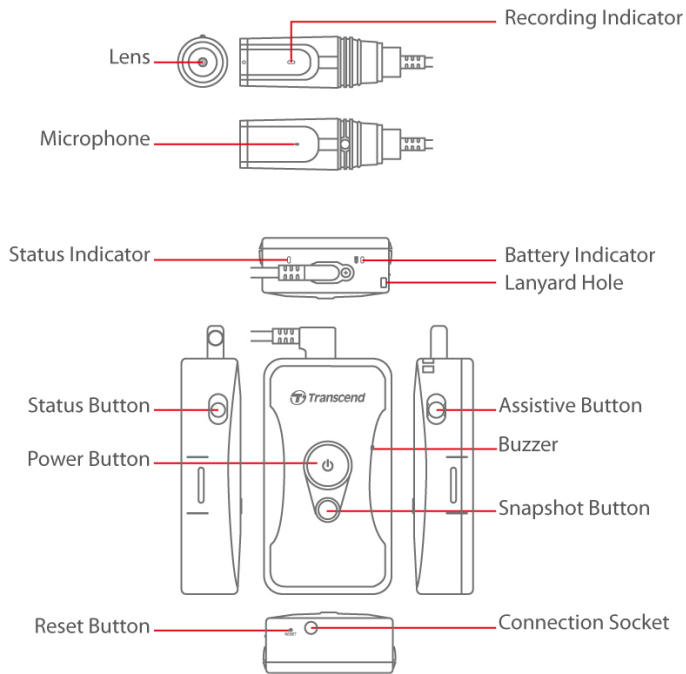


Body Camera
DrivePro Body 60
Quick Start Guide

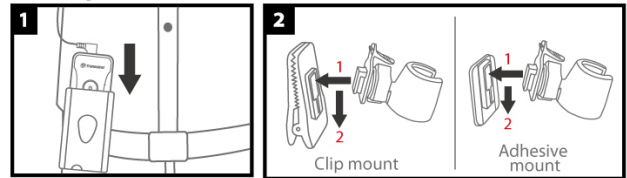


Quick Start Guide

DrivePro Body 60 Overview

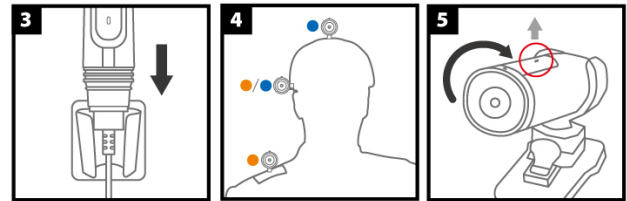


Getting Started



Attach the main unit to your duty belt.

Insert and slide the camera holder into the clip/adhesive mount until you hear a click.

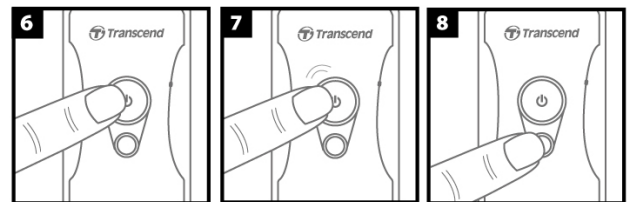


Push the camera into the holder until you hear a click.

Mount the camera in place.

● Clip mount
● Adhesive mount

Rotate the camera so that the LED recording indicator faces upward.



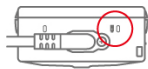
To power on, long press the button.

To switch between Buffering and Recording modes, press the button twice in quick succession.

To take a snapshot, short press the button.

LED Indicators

Top View 1



Battery Indicator

Recording

LED	Status	LED Definition
●	Flashing	Low battery

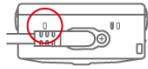
Connected to computer/power

LED	Status	LED Definition
●	Solid	Charging

Checking the battery status

LED	Status	LED Definition
●	Solid	> 67% remaining
●	Solid	31%-67% remaining
●	Solid	< 31% remaining

Top View 2



Status Indicator

Recording

LED	Status	LED Definition
●	Flashing	Memory almost full
●	Flashing quickly	Bluetooth pairing
●	Flashing	GPS positioning
●	Solid	Checking status in buffering mode
●	Solid	Silent mode (Microphone off)
●	Flashing steadily	Checking status in recording mode
●	Flashing twice	Checking status in audio recording mode

Connected to computer

LED	Status	LED Definition
●	Flashing	Transferring data

Camera Top View



Recording Indicator

LED	Status	LED Definition
●	Flashing	Powering on
●	Solid	Buffering mode
●	Flashing steadily	Recording mode
●	Flashing twice	Audio recording mode
●	Solid	Browser/connected to computer

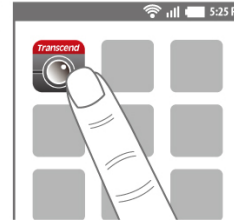
Connecting to Mobile Devices

1



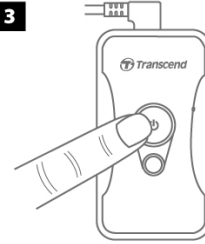
Search and download the **DrivePro Body** App on your App Store or Google Play.

2



Tap the "DrivePro Body" app and turn on Bluetooth.

3



Power on the device.

4



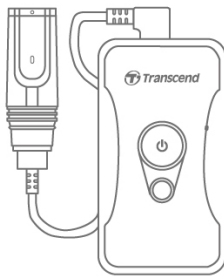
Long press the button until you hear a beep to connect to Bluetooth. You can then take snapshots, switch recording modes, or adjust settings via the app.

5

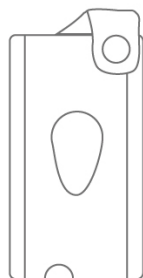


Tap Live View or Browser and connect to "DPB60_XXXXXX" Wi-Fi with the default password "12345678"

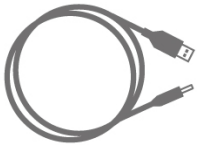
What's in the Box



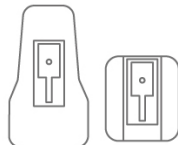
DrivePro Body 60



Belt holster



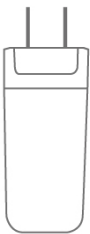
3.5mm to USB cable



Clip & adhesive mounts



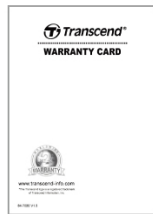
Camera holder



Adapter



Quick Start Guide



Warranty card

Charging the DrivePro Body 60

Before use, please ensure that the battery is fully charged. Charge the DrivePro Body via the 3.5mm DC power cable. A solid orange LED light is visible while charging; the orange LED light will turn off when fully charged.

DrivePro Body Toolbox™ Software

DrivePro Body Toolbox™ is a video file management software which simplifies the settings of the camera. DrivePro Body Toolbox features a user-friendly interface that allows Windows users to set the basic functions of the DrivePro Body. In addition, the toolbox offers a password protection mechanism to protect the recorded data.

- 1 Download the installation files from:
www.transcend-info.com/downloads
- 2 Install DrivePro Body Toolbox software on your desktop or laptop.

User's Manual

The complete User's Manual provides detailed instructions for operating your Transcend product. All product User's Manuals are available for download at www.transcend-info.com/downloads

Technical Support

To contact Transcend for support or for troubleshooting help with your DrivePro Body, please visit www.transcend-info.com

Docking Station (Optional)



For enterprises and departments that purchase multiple DrivePro Body cameras, Transcend's optional 6-port Docking Station offers the best solution. Each port can simultaneously charge and upload the recorded data to your computer.

Specifications

Connect Interface	USB 2.0
Storage Capacity	Internal MLC-based storage
Dimensions	95.9 mm (L) × 52.2 mm (W)× 24.88 mm (H) 3.78" (L) x 2.06" (W) x 0.98" (H)
Weight	167g 5.89 oz
Battery	Li-Polymer 3120mAh
Power Supply	Input: AC100V-240V, 50-60Hz, 0.4A Max Output: DC5V 2A
Recording Life	Up to 10 hours*
Operating Temperature	-20°C (-4°F) ~ 65°C (149°F) 5°C (11°F) ~ 45°C (113°F) when charging with the adapter
Video Format	H.264 (MP4: up to 1920x1080 30fps)
Ingress Protection	IP67
Shock Resistance	MIL-STD-810G 516.6-Transit Drop Test
Lens	F/2.8, 130° wide angle
Resolution / Frame Rate	Full HD (1920 x 1080) / 30fps
Certification	CE, FCC, BSMI, NCC, MIC
Warranty	2-Year Limited

* Environmental conditions may increase or decrease specifications

Federal Communications Commission (FCC) Statement

This device complies with Part 15 FCC Rules. Operation is subject to the following two conditions: (1) This device may not cause harmful interference. (2) This device must accept any interference received including interference that may cause undesired operation.

This Equipment has been tested and found to comply with the limits for a Class B digital device, pursuant to Part 15 of the FCC rules. These limits are designed to provide reasonable protection against harmful interference in a residential installation. This equipment generates, uses and can radiate radio frequency energy and, if not installed and used in accordance with the instructions, may cause harmful interference to radio communications. However, there is no guarantee that interference will not occur in a particular installation. If this equipment does cause harmful interference to radio or television reception, which can be determined by turning the equipment off and on, the user is encouraged to try to correct the interference by one or more of the following measures:

- Reorient or relocate the receiving antenna.
- Increase the separation between the equipment and receiver.
- Connect the equipment into an outlet on a circuit different from that to which the receiver is connected.
- Consult the dealer or an experienced radio/TV technician for help.

RF Exposure Information (SAR)

This equipment complies with the FCC portable RF exposure limit set forth for an uncontrolled environment. The exposure standard for wireless devices employing a unit of measurement is known as the Specific Absorption Rate, or SAR. The SAR limit set by the FCC is 1.6W/kg.

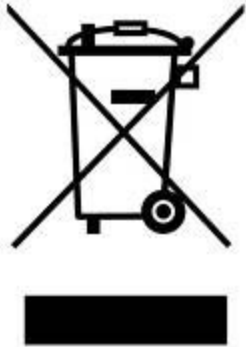
This equipment could be installed and operated with minimum distance 0cm between the radiator & your body.

* Any changes or modifications not expressly approved by the party responsible for compliance could void the authority to operate equipment.

* This device and its antenna must not be co-located or operating in conjunction with any other antenna or transmitter.

Transcend Information Inc (USA)
1645 North Brian Street, Orange, CA 92867, U.S.A
TEL: +1-714-921-2000

Recycling and Environmental Protection



Recycling the Product (WEEE): Your product is designed and manufactured with high quality materials and components, which can be recycled and reused. When you see the crossed-out wheel bin symbol attached to a product, it means that the product is covered by the European Directive 2002/96/EC:

Never dispose of your product with other household waste. Please inform yourself about the local rules on the separate collection of electrical and electronic products. The correct disposal of your old product helps prevent potential negative consequences on the environment and human health.



Battery Disposal: Your product contains a built-in rechargeable battery covered by the European Directive 2006/66/EC, which cannot be disposed of with normal household waste. Please inform yourself about the local rules on separate collection of batteries. The correct disposal of batteries helps prevent potentially negative consequences on the environment and human health.

For products with non-exchangeable built in batteries: The removal of (or the attempt to remove) the battery invalidates the warranty. This procedure is only to be performed at the end of the product's life.

CAUTION

RISK OF EXPLOSION IF BATTERY IS REPLACED BY AN INCORRECT TYPE.
DISPOSE OF USED BATTERIES ACCORDING TO THE INSTRUCTIONS.