

## #01\_WLAN2.4GHz\_802.11b 1Mbps\_Front\_5mm\_Ch6

Communication System: 802.11b; Frequency: 2437 MHz; Duty Cycle: 1:1

Medium: HSL\_2450\_210817 Medium parameters used :  $f = 2437$  MHz;  $\sigma = 1.748$  S/m;  $\epsilon_r = 39.122$ ;  $\rho = 1000$  kg/m<sup>3</sup>

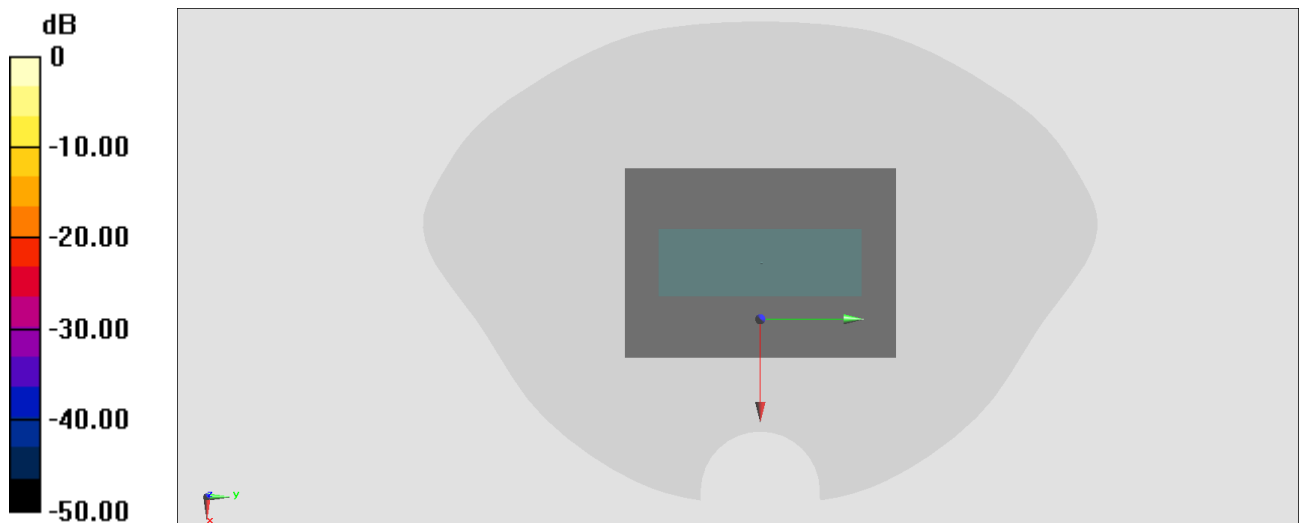
Ambient Temperature : 23.3 °C; Liquid Temperature : 22.3 °C

### DASY5 Configuration

- Probe: EX3DV4 - SN3642; ConvF(7.43, 7.43, 7.43) @ 2437 MHz; Calibrated: 2021/4/26
- Sensor-Surface: 1.4mm (Mechanical Surface Detection)
- Electronics: DAE4 Sn656; Calibrated: 2021/1/22
- Phantom: Twin-SAM V5.0\_LEFT; Type: QD 000 P40 CD; Serial: 1718
- Measurement SW: DASY52, Version 52.10 (4); SEMCAD X Version 14.6.14 (7483)

**Area Scan (71x101x1):** Interpolated grid: dx=1.200 mm, dy=1.200 mm

Maximum value of SAR (interpolated) = 0 W/kg



0 dB = 0 W/kg = -999.00 dBW/kg