

# Quick Start Guide

Dashcam  
DrivePro 110/130/150

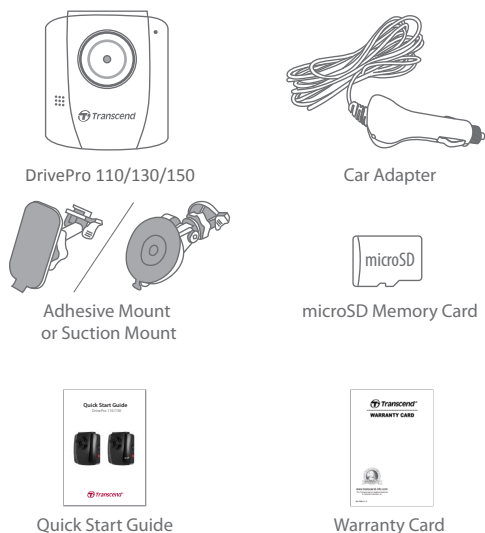


## Quick Start Guide

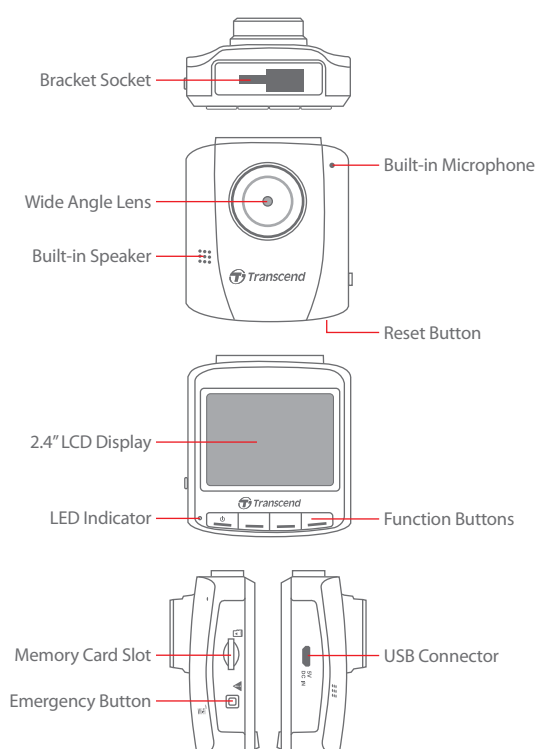
### Safety Precautions

- For your own safety, do not operate the DrivePro or use the App while driving.
- Never place the DrivePro where the driver's view or deployment of airbags is obstructed.
- Do not mount the DrivePro on a tinted window to prevent damage to the tinted film.
- Mount the DrivePro within range of the windshield wipers to ensure clear visibility in rain.
- Make sure the wire of the car adapter is securely attached and installed to ensure safety.

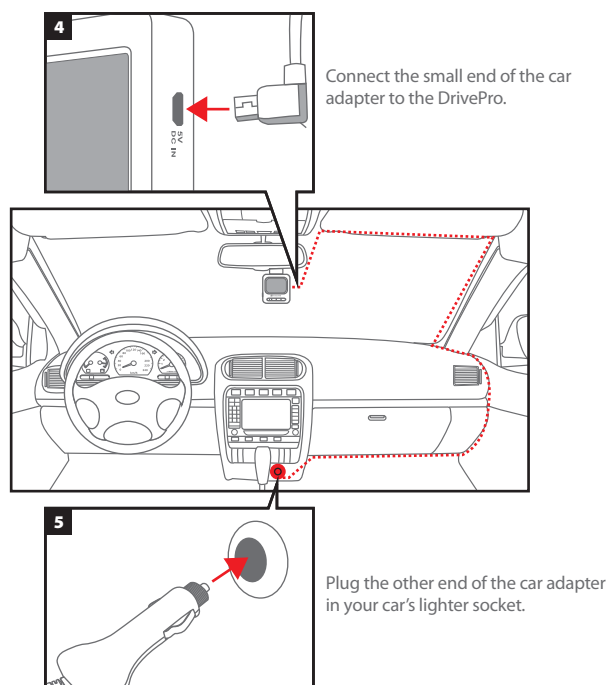
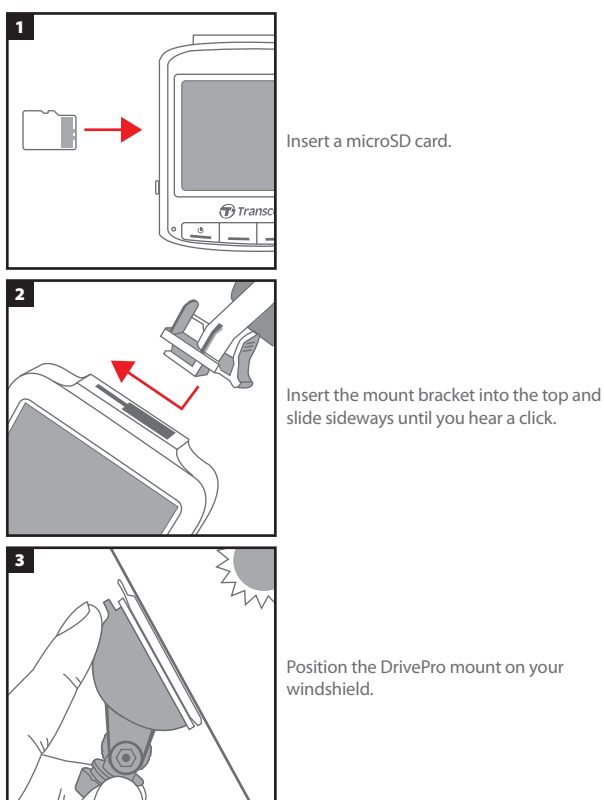
### What's in the Box



### DrivePro 110/130/150 Overview



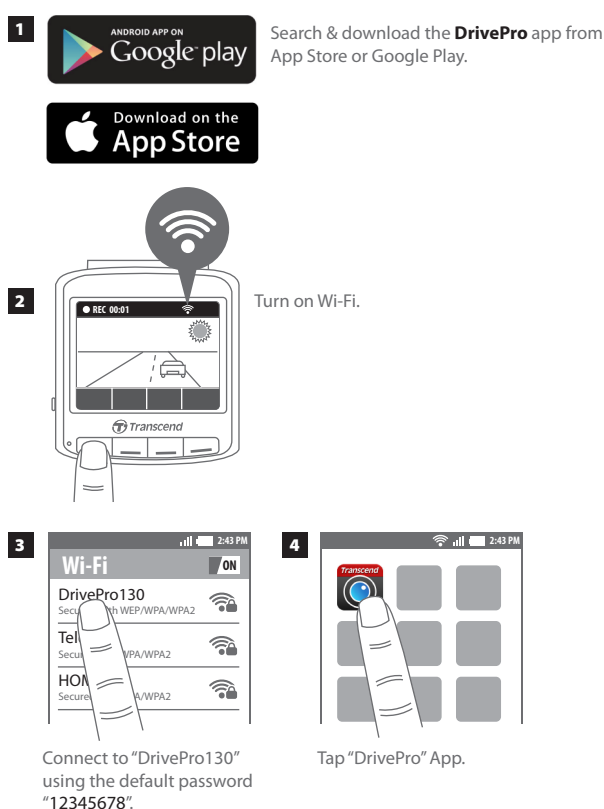
### Getting Started



Start your car engine and the DrivePro will start recording automatically.

Note: Please set up the date, time, and time zone before the first use.

### Connecting to the Mobile Devices (for DrivePro 130 only)



### Installing DrivePro Toolbox™ Software

The DrivePro Toolbox, developed for Windows, features a user-friendly interface that allows you to select and play videos recorded on your DrivePro, and see your driving paths of the recorded videos displayed on maps without the need to install separate codecs.

- 1 Download the installation files from: [www.transcend-info.com/downloads](http://www.transcend-info.com/downloads)
- 2 Install DrivePro Toolbox software on your desktop or laptop.

### User's Manual / Firmware Updates

The complete User's Manual provides detailed instructions for operating your Transcend product. All product User's Manuals and Firmware Updates are available for download at [www.transcend-info.com/downloads](http://www.transcend-info.com/downloads)

### Technical Support

Contact Transcend for more in-depth technical support at: [www.transcend-info.com/support/contact](http://www.transcend-info.com/support/contact)

**!** We strongly recommend the use of MLC-based memory cards to reach the optimal recording performance as dashcams require extensive read/write. Using TLC-based memory cards on your dashcam might result in unstable performance.

**!** Besides the bundled microSD card, we recommend Transcend's High Endurance microSD card as an additional purchase to reach the most stable recording performance.

## Specifications

<b>Panel:</b>	2.4" color LCD
<b>Speaker / Microphone:</b>	1.0 Watt / 0.5 mA (built-in)
<b>Connect Interface:</b>	USB2.0
<b>Storage Capacity:</b>	MLC-based MicroSD, 8GB / 16GB / 32GB / 64GB /128GB (Class 10 or above)
<b>Control buttons:</b>	4 function buttons 1 emergency recording button 1 reset button
<b>Dimensions:</b>	70.2 mm (L) × 63.1mm (W)× 34.5mm (H)
<b>Weight:</b>	71g
<b>Power Supply (car charger):</b>	Input DC12V~24V Output DC5V / 1A
<b>Operating Temperature:</b>	-20°C (-4°F) ~ 65°C (149°F)
<b>Video Formats:</b>	H.264 (MOV: up to 1920x1080 30fps)
<b>Lens:</b>	F/2.0, 130° wide angle (DrivePro 110/130) F/2.0, 160° wide angle (DrivePro 150)
<b>Resolution / Frame Rate</b>	Full HD (1920 x 1080) 30fps HD (1280 x 720) 30fps
<b>WiFi</b>	802.11b/g/n
<b>Certification:</b>	CE, FCC, NCC, BSMI
<b>Warranty:</b>	2 years

## **Federal Communications Commission (FCC) Statement**

This device complies with Part 15 FCC Rules. Operation is subject to the following two conditions: (1) This device may not cause harmful interference. (2) This device must accept any interference received including interference that may cause undesired operation.

This Equipment has been tested and found to comply with the limits for a Class B digital device, pursuant to Part 15 of the FCC rules. These limits are designed to provide reasonable protection against harmful interference in a residential installation. This equipment generates, uses and can radiate radio frequency energy and, if not installed and used in accordance with the instructions, may cause harmful interference to radio communications. However, there is no guarantee that interference will not occur in a particular installation. If this equipment does cause harmful interference to radio or television reception, which can be determined by turning the equipment off and on, the user is encouraged to try to correct the interference by one or more of the following measures:

- Reorient or relocate the receiving antenna.
- Increase the separation between the equipment and receiver.
- Connect the equipment into an outlet on a circuit different from that to which the receiver is connected.
- Consult the dealer or an experienced radio/TV technician for help.

### **RF Exposure Statement:**

This equipment complies with FCC RF radiation exposure limits set forth for an uncontrolled environment. This equipment should be installed and operated with a minimum distance of 20cm between the radiator and your body.

You are cautioned that changes or modifications not expressly approved by the part responsible for compliance could void the user's authority to operate the equipment.

This Transmitter must not be co-located or operating in conjunction with any other antenna or transmitter.