

# Wireless Charging Dock for Phone and Watch

## User Manual

### Contents

<i>1.0 INTRODUCTION</i> .....	<i>1</i>
<i>2.0 FEATURES</i> .....	<i>1</i>
<i>3.0 SPECIFICATIONS</i> .....	<i>2</i>
<i>4.0 PACKAGE CONTENTS</i> .....	<i>2</i>
<i>5.0 PRODUCT SHOW</i> .....	<i>3</i>
<i>6.0 OPERATION</i> .....	<i>3</i>

# Wireless charger

## DEAR CUSTOMER

Thank you for purchasing this product. For optimum performance and safety, please read these instructions carefully before connecting, operating or using this product. Please keep this manual for future reference.

## 1.0 INTRODUCTION

Types of fashion design, mouth - DC charging input design, this product to your digital devices. It supports wireless charging output, and USBA output, specifically for your business travel, meetings, adventure, camping, or travel and so on.

## 2.0 FEATURES

- DC input mouth: 12 V / 4 A
- Outputs:
  - Output1: USBA output 5 V / 2.4 A
  - Output2: Wireless charger 5W/7.5W/10W
  - Output3: Watch the wireless charger Wireless charger 2.5W
- Input under-voltage protection
- Output over-current protection
- Compliant with CE,FCC,MFI

### 3.0 SPECIFICATIONS

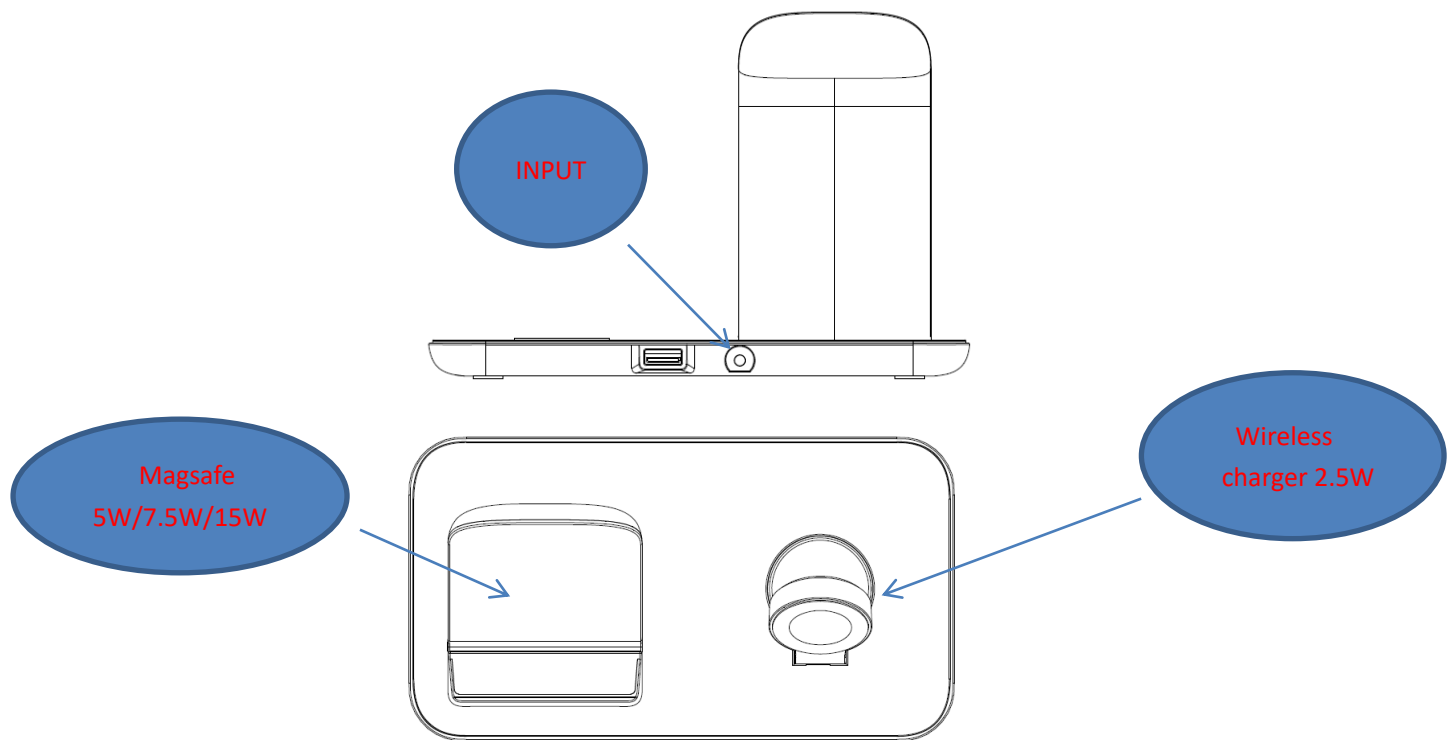
Input	DC: 12V/4A
Output1	USBA 12W
Output2	Wireless charger 5W 7.5W 10W
Output3	Wireless charger 2.5W
Over Current Protection	Yes
Over Voltage Protection	Yes
Short circuit Protection	Yes
Over Temperature Protection	Yes
Operating Temperature Range	0~ 40°C
Storage Temperature Range	-5~45°C
Operating Humidity	20~90%RH
Storage Humidity	45~85%RH
Color	white
Size(L*W*H)	<b>179.7*99.8*121.5</b>
Certification	CE,FCC,QI
User Manual	English Version

### 4.0 PACKAGE CONTENTS

Before attempting to use this unit, please check the packaging and make sure the following items are contained in the shipping carton:

- Main unit×1
- User Manual×1

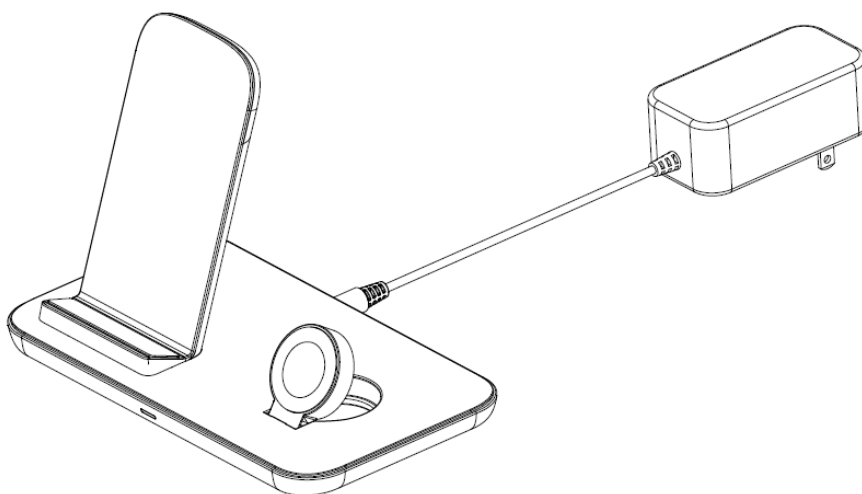
## 5.0 PRODUCT SHOW



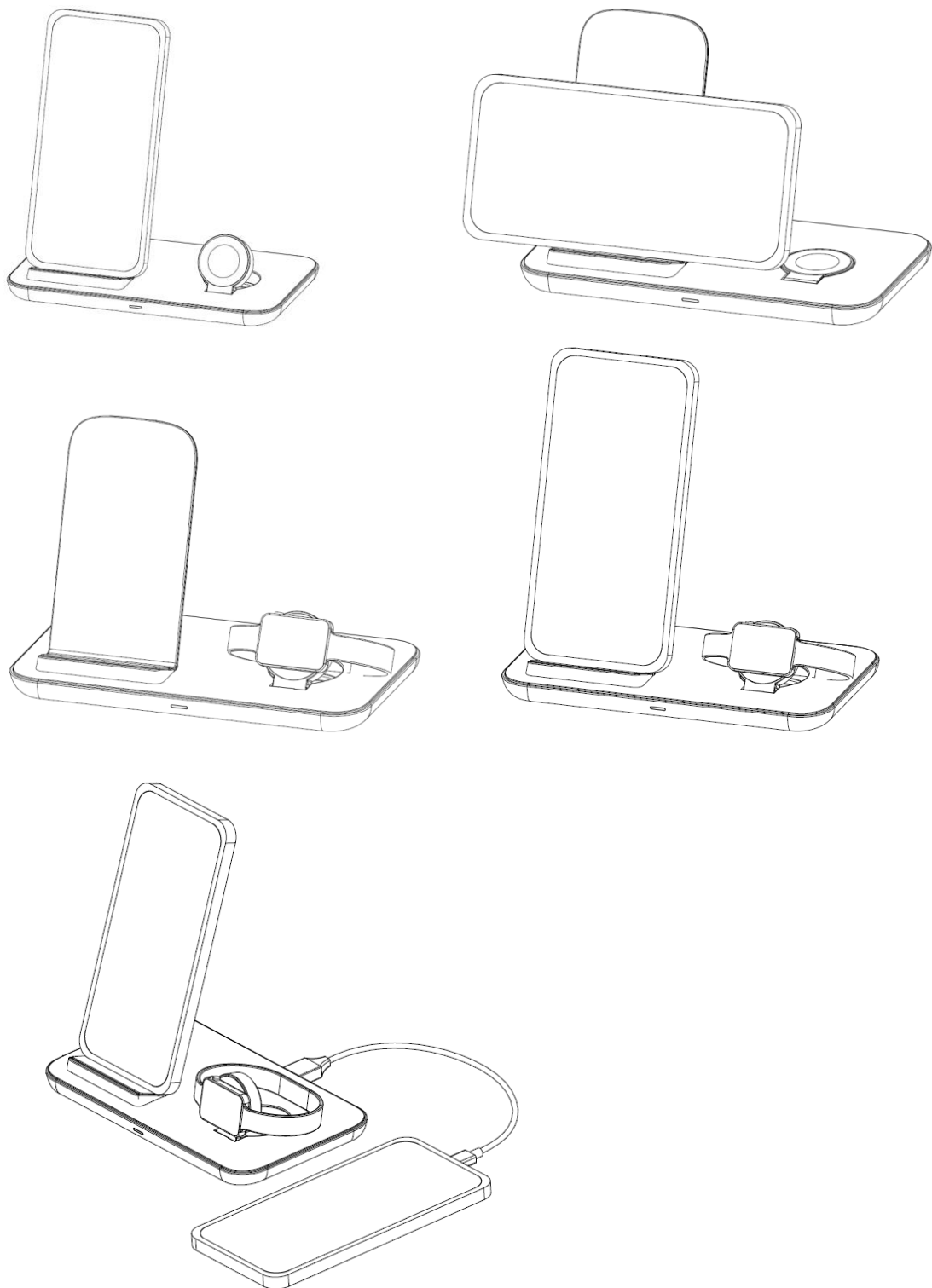
## 6.0 OPERATION

### Operation Procedures

- a) Charge the power bank
  - Connected to the charger



b) Charge the devices



**Note:**

**Operation Notes**

1. don't let the product close to the fire, like an oven, candles and other high temperature.

2. Don't let the noise of infiltrating liquid products, such as swimming pool, bathtub, etc.
3. Do not use corrosive detergent cleaning products.
4. Do not remove, modified products.

### **FCC Warning**

This device complies with Part 18 of the FCC Rules.

Note 1: This equipment has been tested and found to comply with the limits for a Class B digital device, pursuant to part 15 of the FCC Rules. These limits are designed to provide reasonable protection against harmful interference in a residential installation. This equipment generates, uses and can radiate radio frequency energy and, if not installed and used in accordance with the instructions, may cause harmful interference to radio communications. However, there is no guarantee that interference will not occur in a particular installation. If this equipment does cause harmful interference to radio or television reception, which can be determined by turning the equipment off and on, the user is encouraged to try to correct the interference by one or more of the following measures:

- Reorient or relocate the receiving antenna.
- Increase the separation between the equipment and receiver.
- Connect the equipment into an outlet on a circuit different from that to which the receiver is connected.
- Consult the dealer or an experienced radio/TV technician for help.

NOTE 2: Any changes or modifications to this unit not expressly approved by the party responsible for compliance could void the user's authority to operate the equipment.

Refer to FCC Part 18.213(c) and KDB 784748 Anner A section A.5:

(a) Max. Electric Field Emissions: 2.0317V/m

Max. Magnetic Field Emissions: 0.7504A/m

(b) The maintenance of the system is the responsibility of the manufacturer.

(c) To prevent interference, the product should be as far away from devices operating at the same frequency as possible.

### **RF exposure considerations**

This equipment complies with the FCC RF radiation exposure limits set forth for an uncontrolled environment. This equipment should be installed and operated with a minimum distance of 20cm between the radiator and any part of your body.

P/N