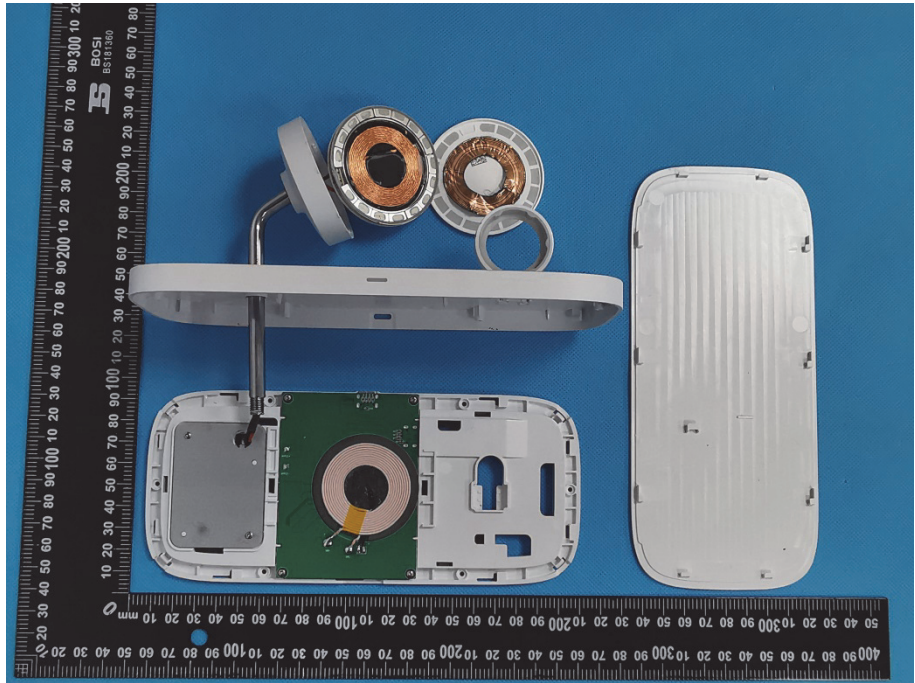
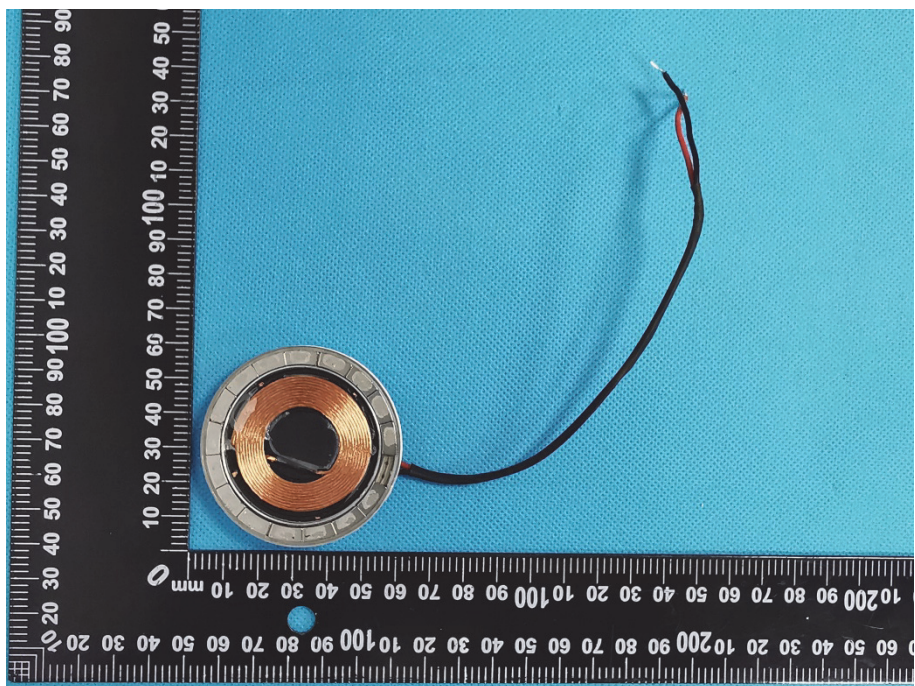


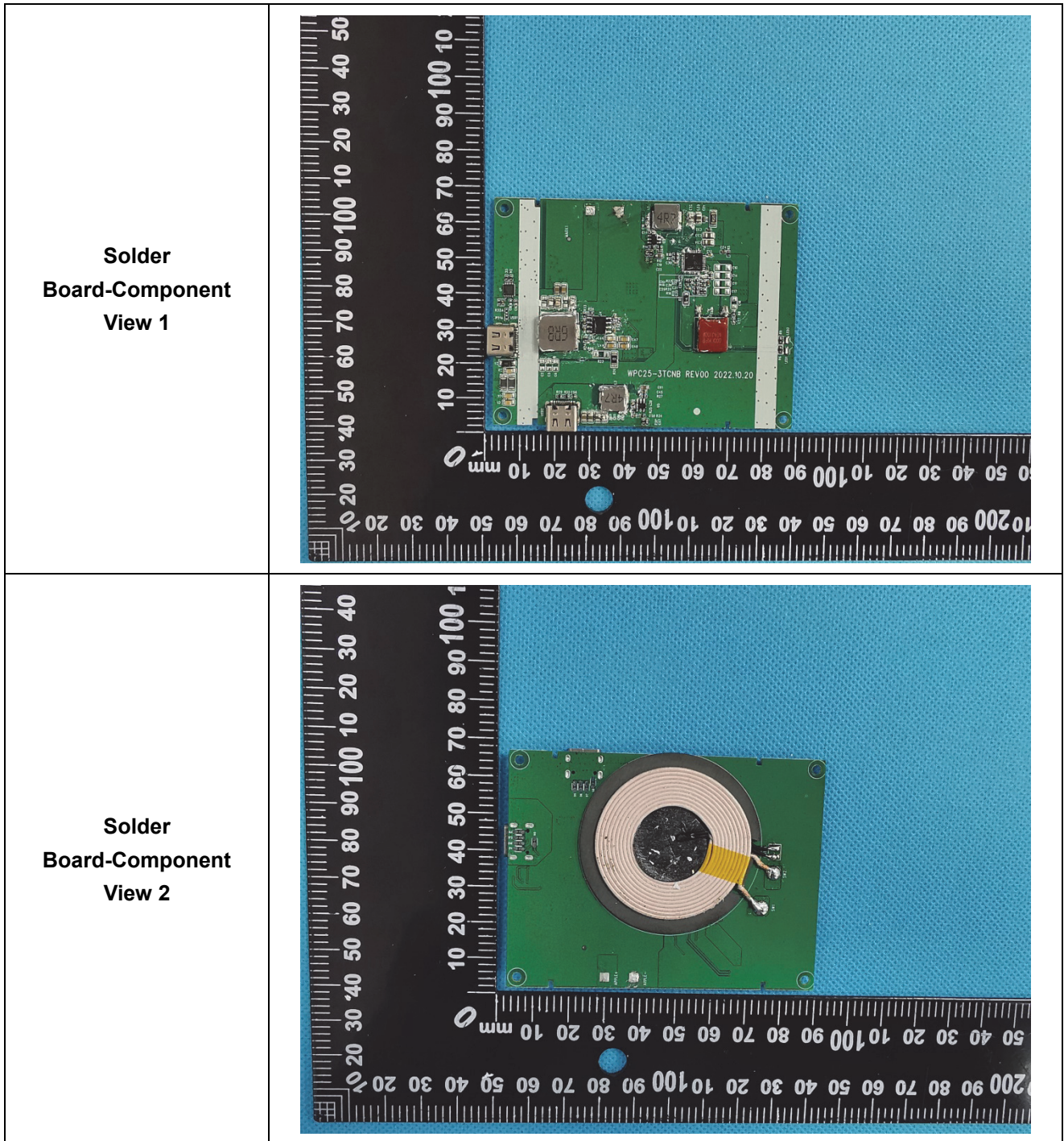
EXHIBIT 3 - EUT INTERNAL PHOTOGRAPHS

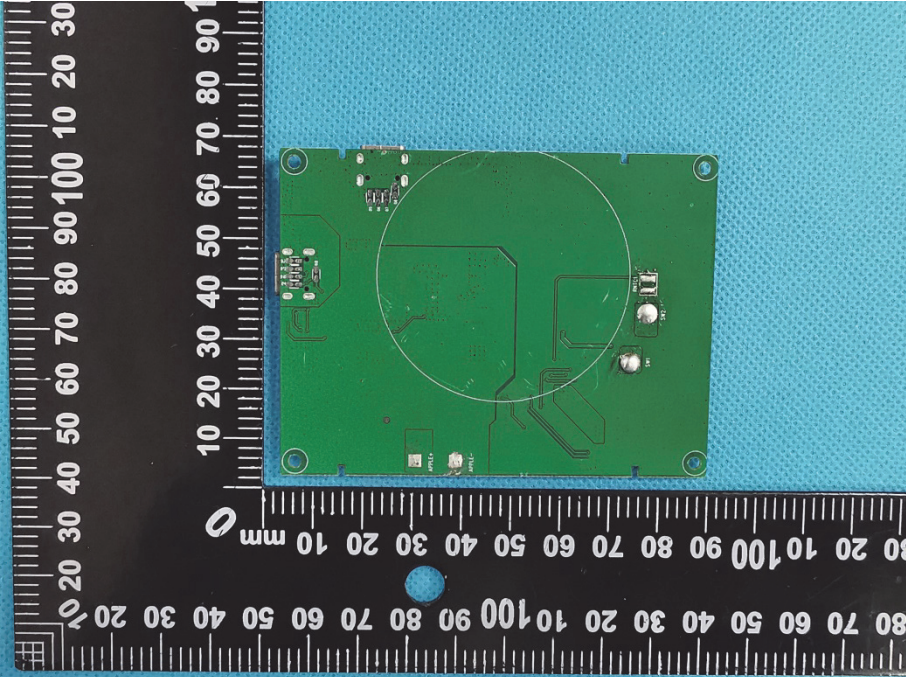
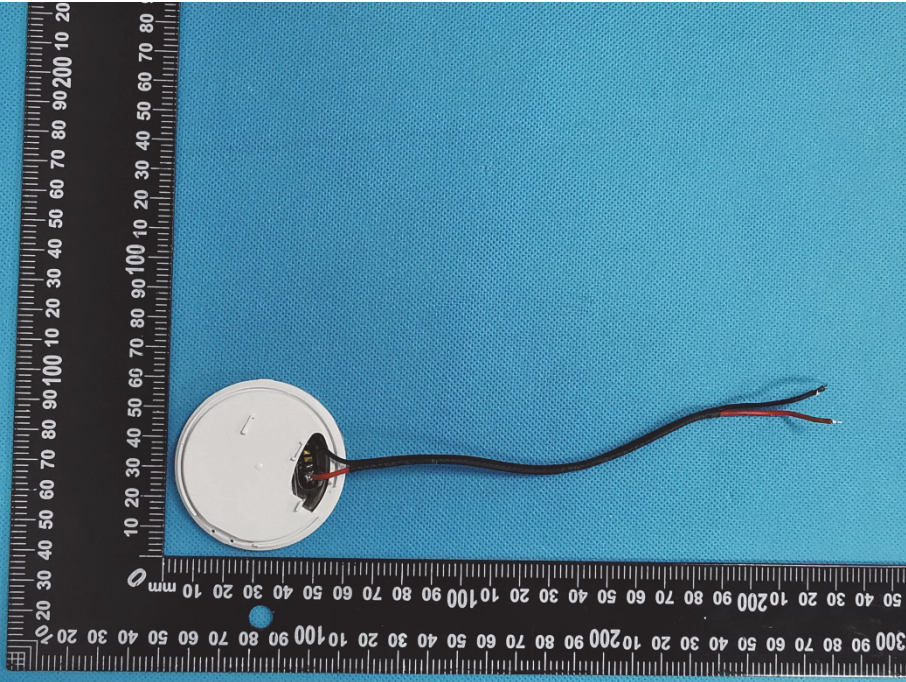
EUT Housing and Board View 1

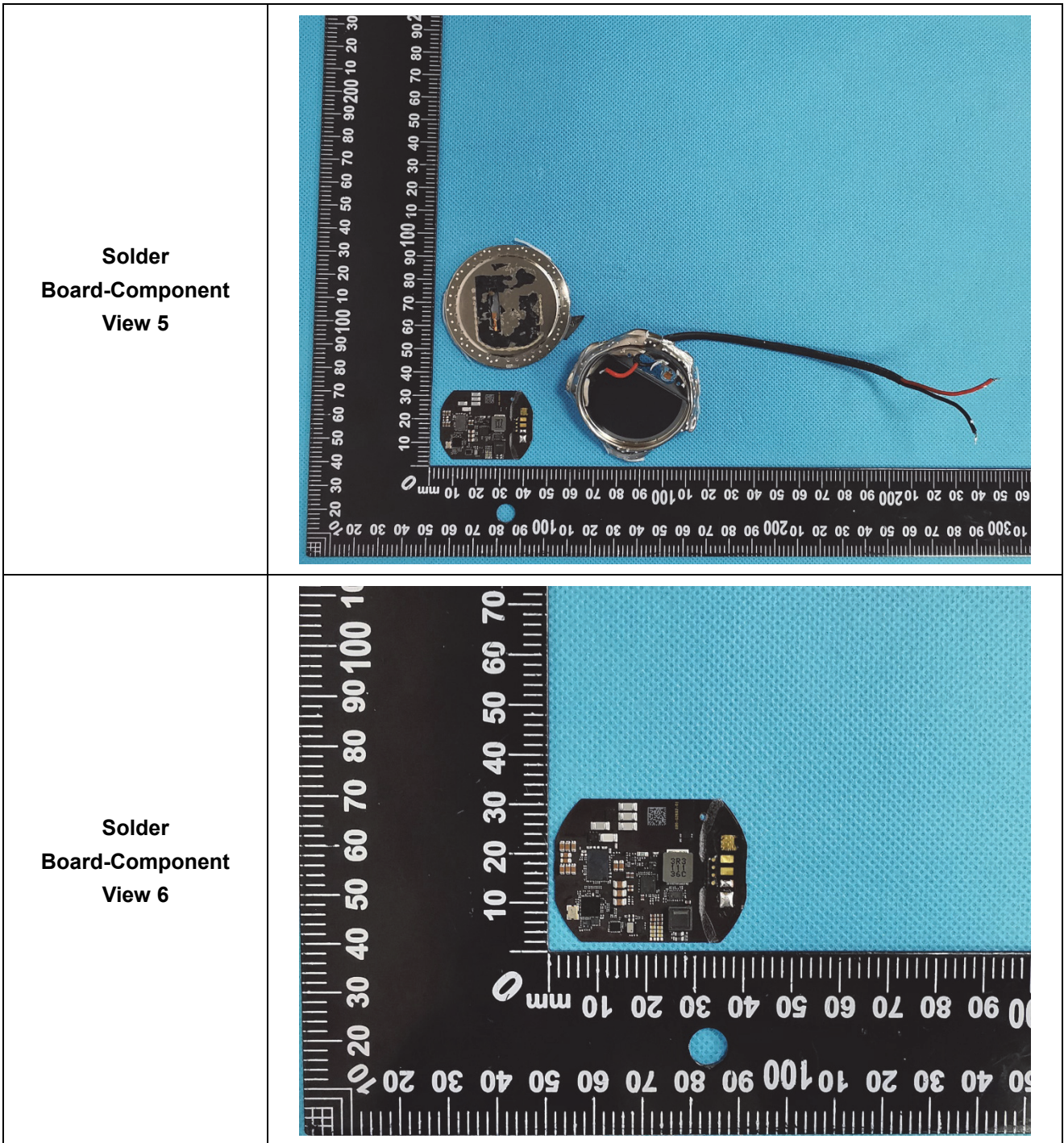


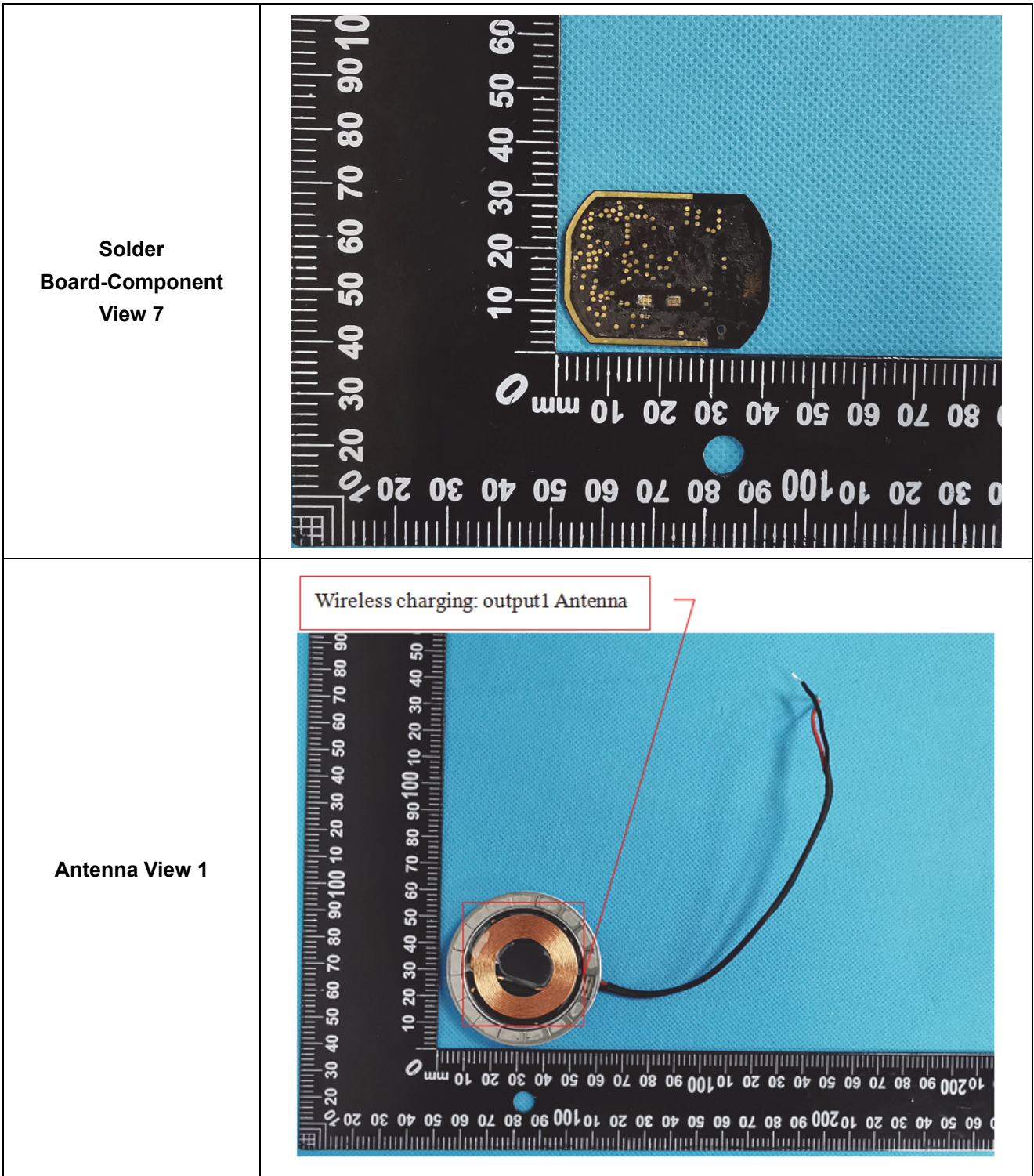
EUT Housing and Board View 2





| | |
|---|---|
| <p>Solder Board-Component View 3</p> |  A photograph of a green printed circuit board (PCB) component. The board is rectangular with rounded corners and features a large circular area in the center, possibly a mounting hole or a specific functional region. Various electronic components, including resistors and integrated circuits, are visible on the board. The component is placed on a blue textured surface next to a black ruler with white markings for scale. The ruler shows measurements in millimeters, with markings every 10 mm and sub-markings every 1 mm. |
| <p>Solder Board-Component View 4</p> |  A photograph of a circular white component, likely a sensor or a small actuator, with two thin wires (one red, one black) extending from its center. The component is placed on a blue textured surface next to a black ruler with white markings for scale. The ruler shows measurements in millimeters, with markings every 10 mm and sub-markings every 1 mm. |





Antenna View 2

